

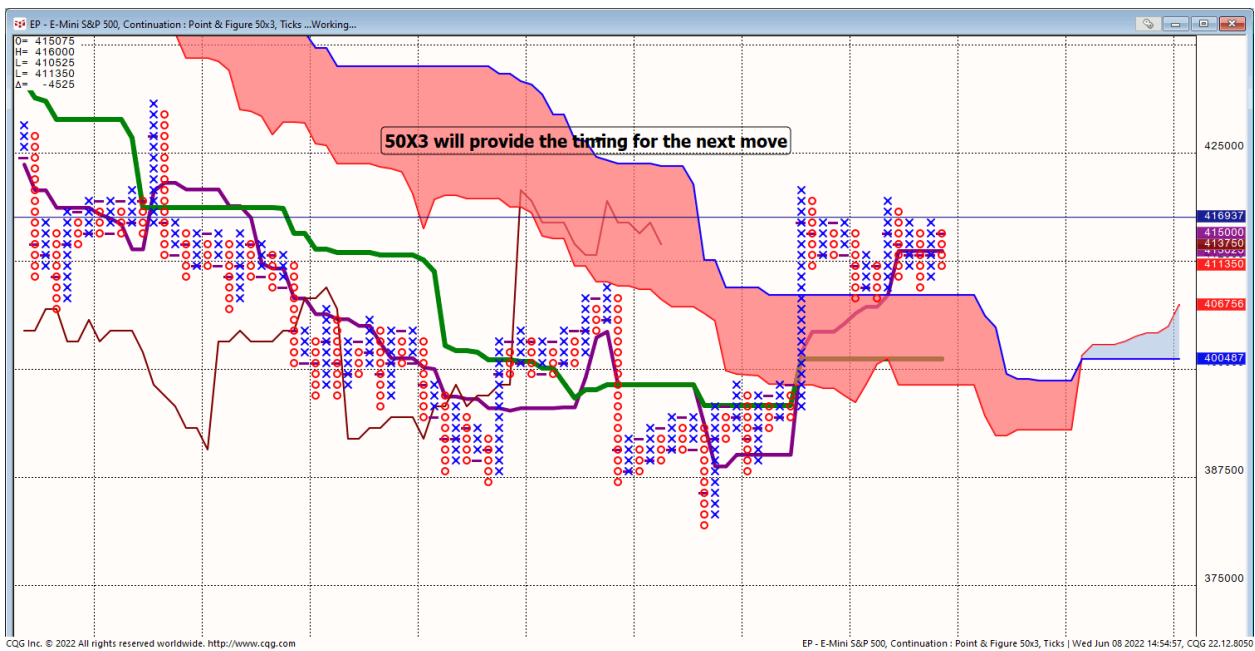


## Daily Market Intelligence

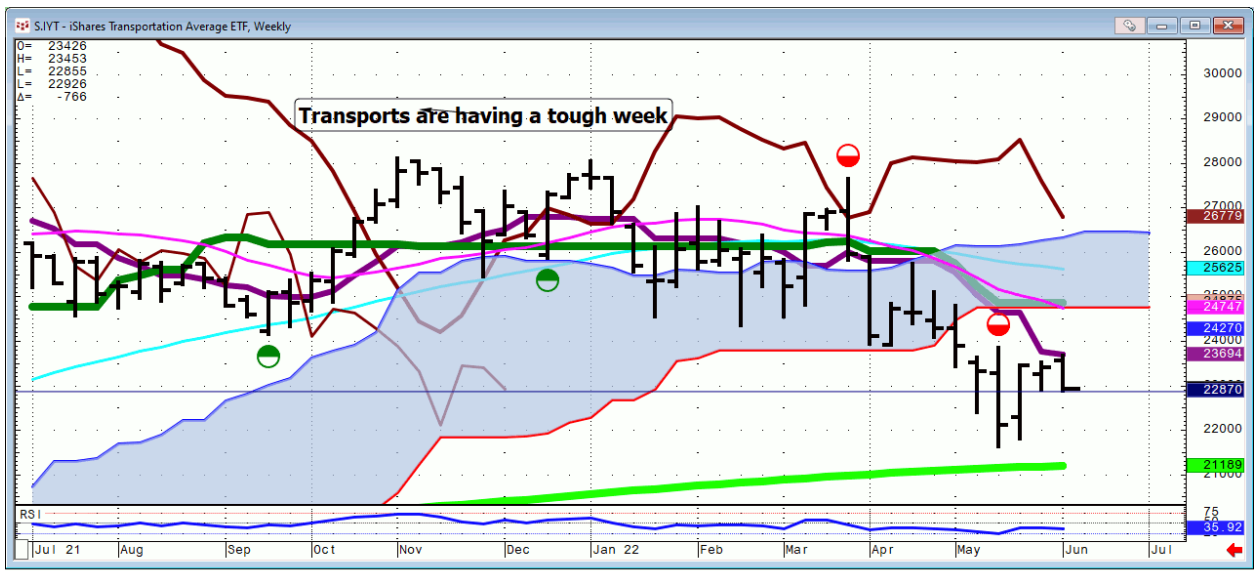
**Models are down**

Stocks...

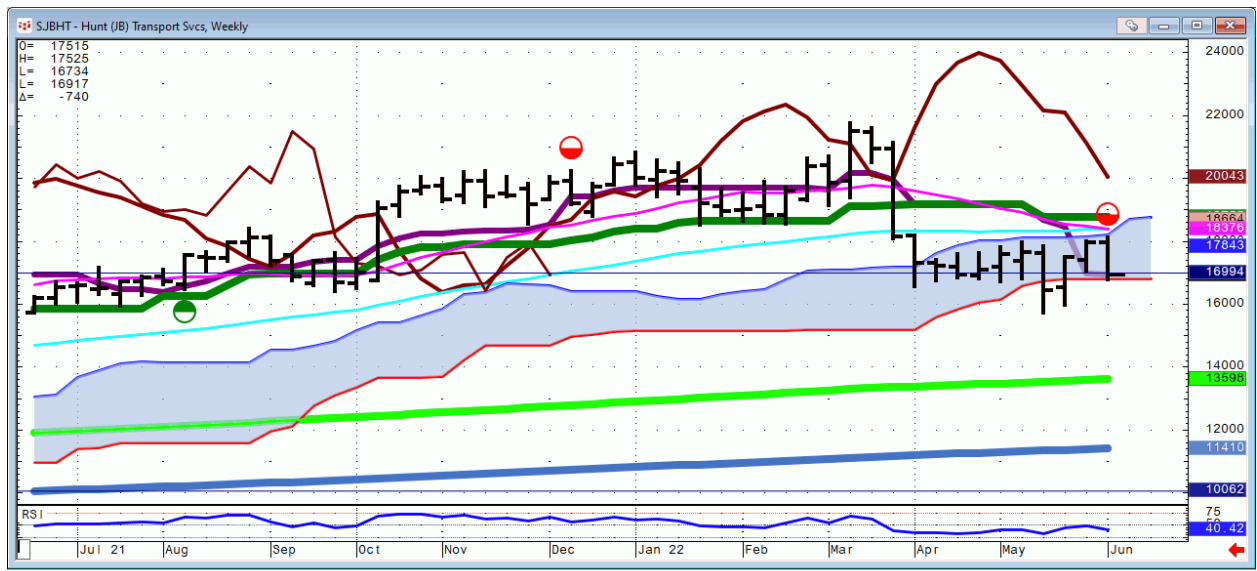
Spo...



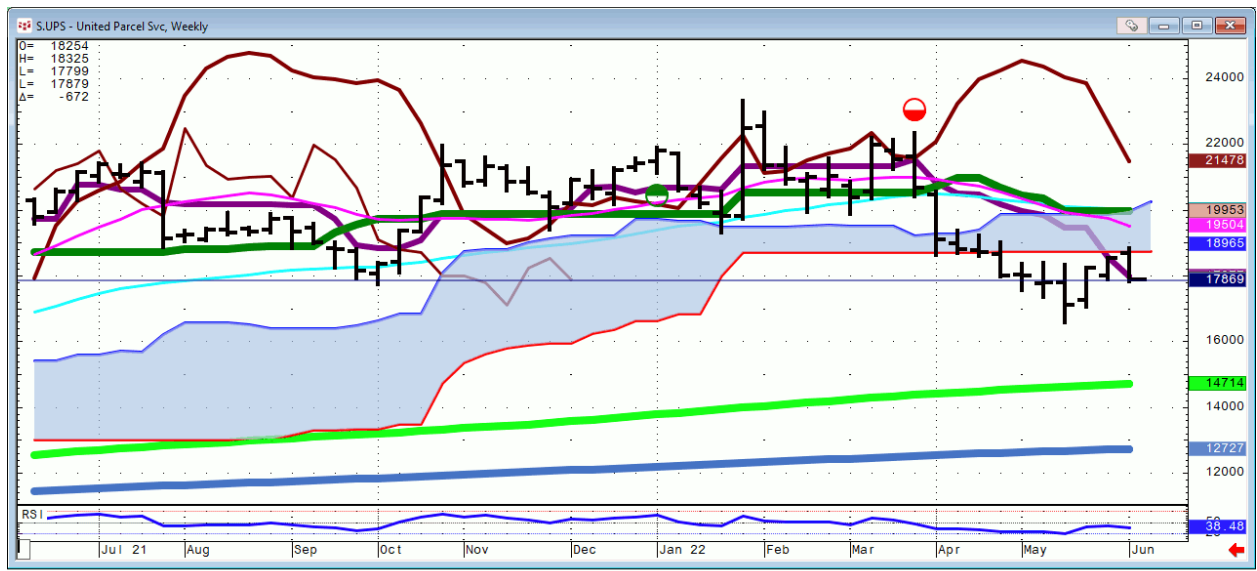
# IYT...daily



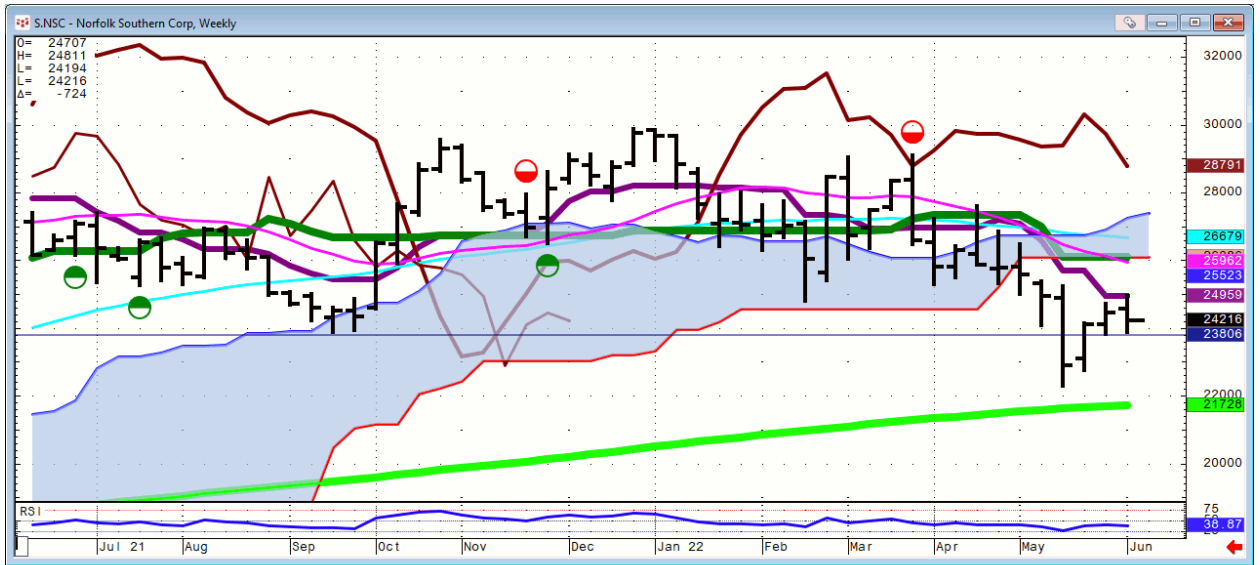
# JBHT...Weekly



# UPS...



# NSC...



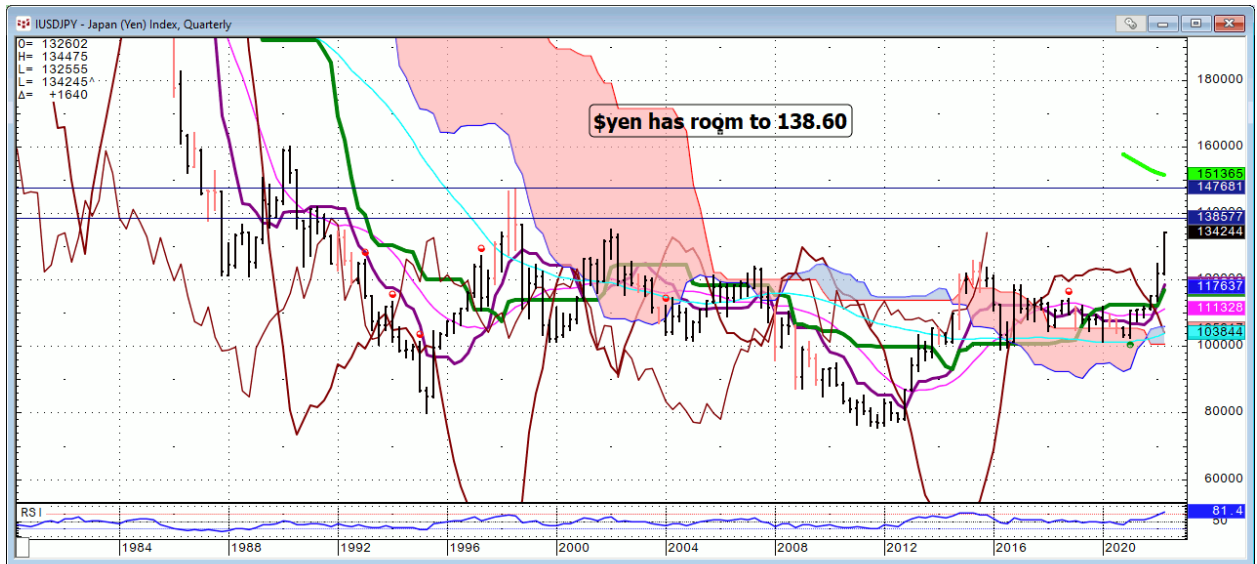
# KWEB...



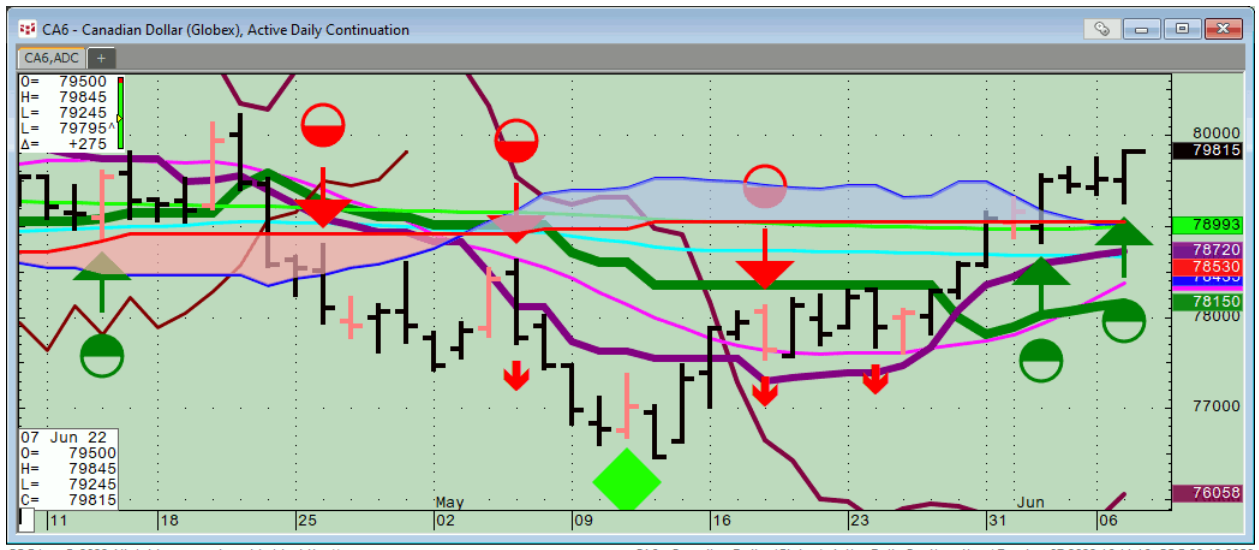
***Bond...***

FX...

## USDJPY...and then the Plaza accord fibs.

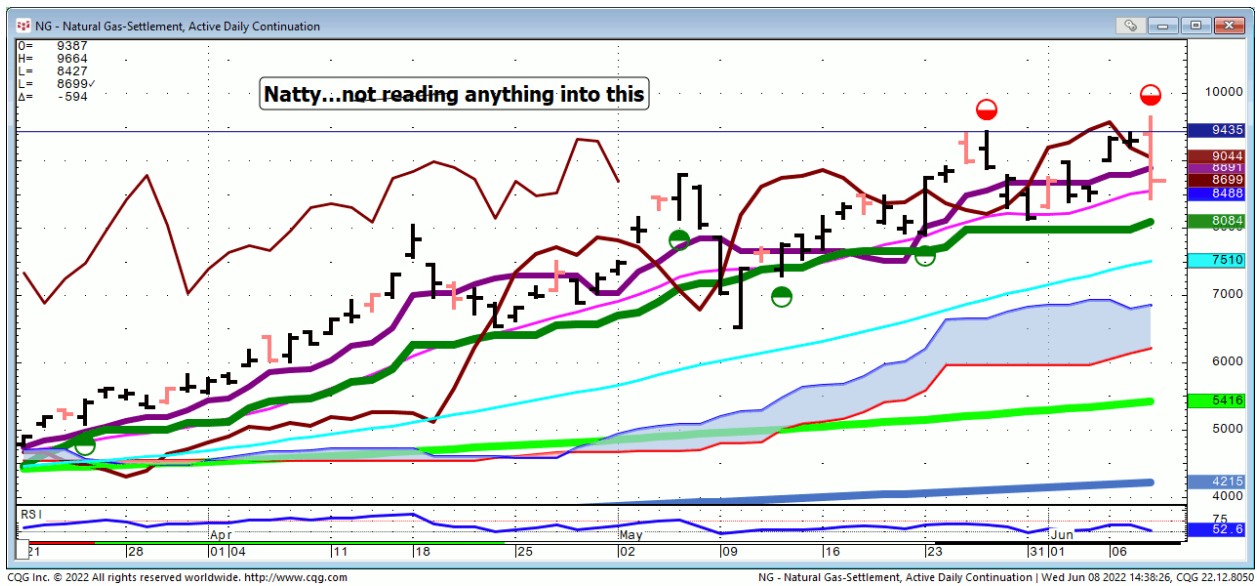


# Canadian Dollar...



## Commodities...

### Natgas...



**General Comments or Valuable Insight**

**Markets are winding up for seasonal moves.**

**Tomorrow its ECB.**

**The following week there is a full calendar.**

**Asia was the feature today which was bought against the rest of the world.**

**Transports could be signaling a big slowdown in the U.S.**

**You can't chase direction.**

**We Trade to Make Money  
We don't trade to be right**

**Judd's room is open.  
Invites are sent before NYSE Opens.**

**I've started screen sharing just after 7 A.M.  
CDT. I start speaking @ 8:20.**

**Please check your spam folder or your Google  
calendar if you don't see an invite.**

**Not there? Just let me know in the A.M. to get one  
when the room opens.**

**W begin answering questions around 8:20 CDT.**

**I will review any instrument available on my  
platform and tell you what if anything I see**

<http://www.whitewavetradingstrategies.com/glossary/>

**WhiteWave Trading Strategies  
Independent Research from the Pro's Pro**

## Chart Lines....Ichimoku

**Green Bright**...200 DMA **Aqua** 50 DMA **Blue Green** 21 DMA **Fuchsia** 18 DMA **Yellow** 10 SMA

These are simple moving averages. When you roll a chart to weekly or monthly the averages are simple weekly or monthly mvg averages.

The **reddish purple** is an embedded Imoku line which acts as momentum.

The **leaf green** is an embedded Imoku line which calculates 50% retraces.

**Brown line** is where the Macd with histogram crosses. The line shows the visual on every time frame so you don't have to guess looking at the price of the cross in a line study.

