

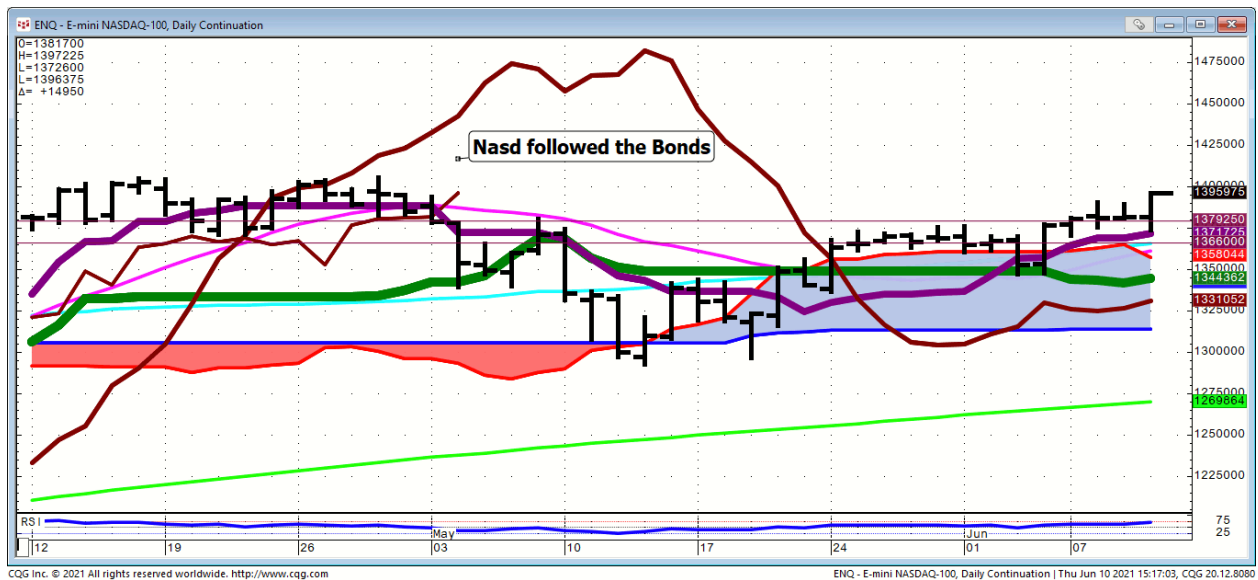


Daily Market Intelligence

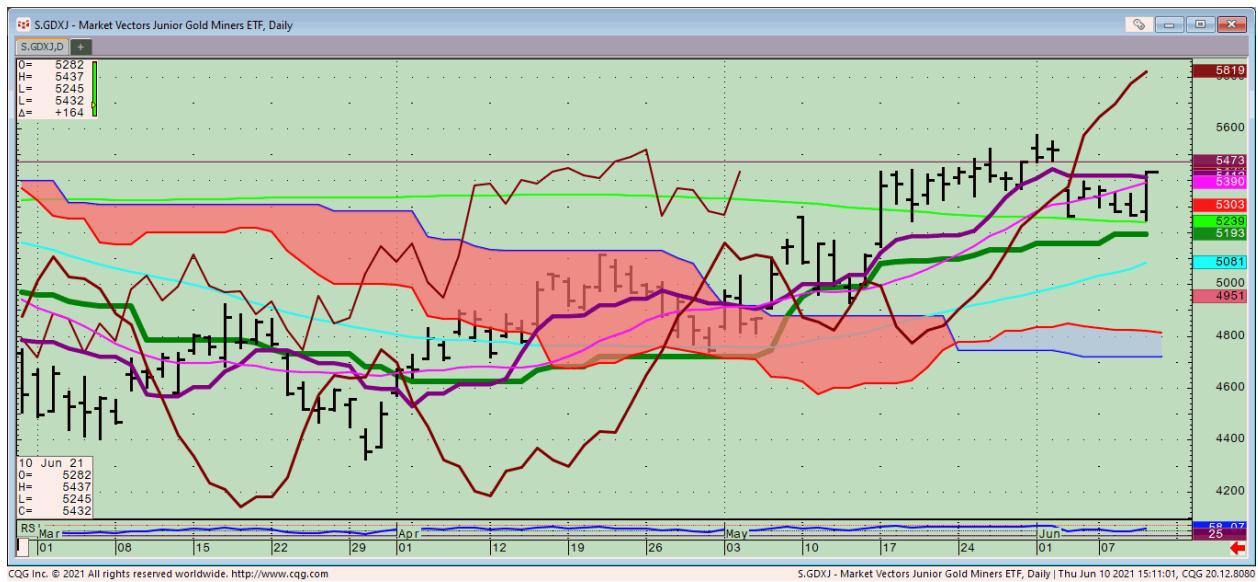
Models remain up

Stock...

Nasd 100

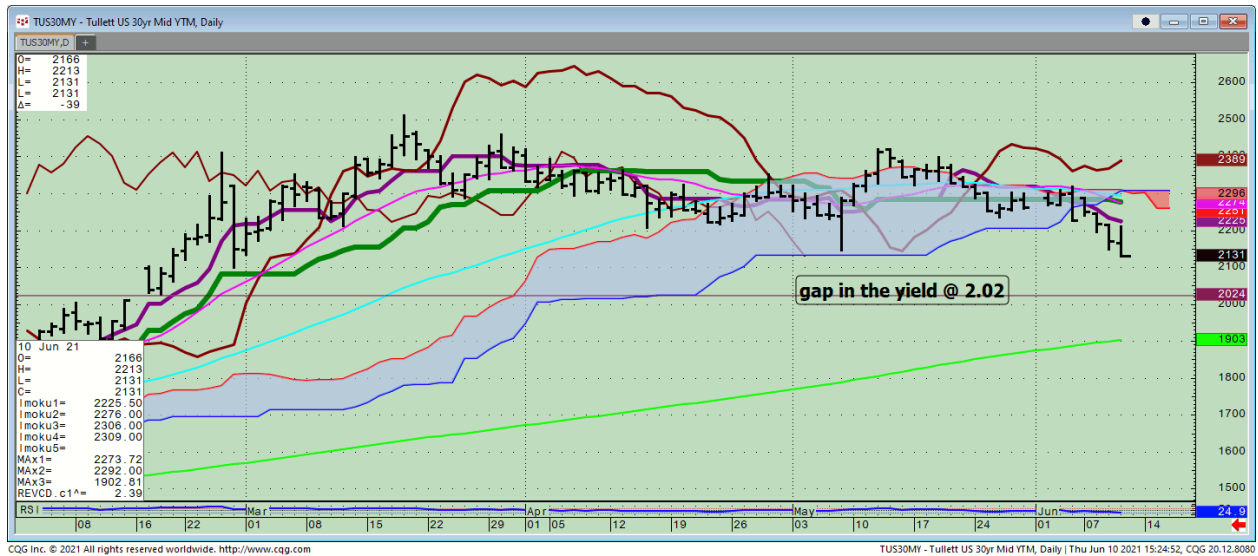


GDXJ...



Bond...

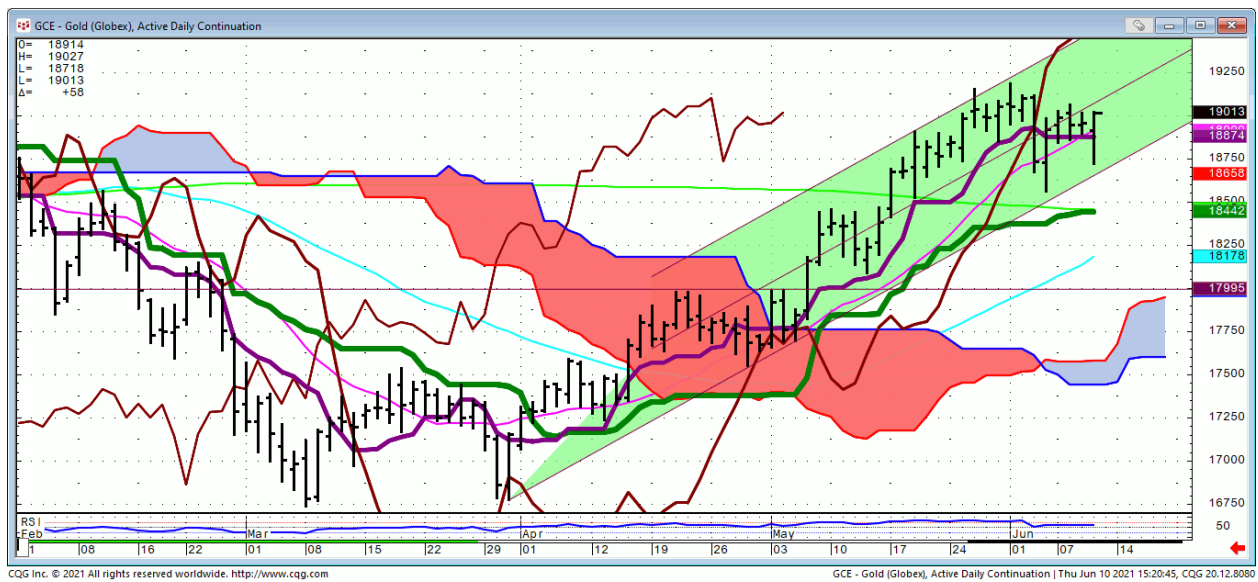
30 Yr. Yield



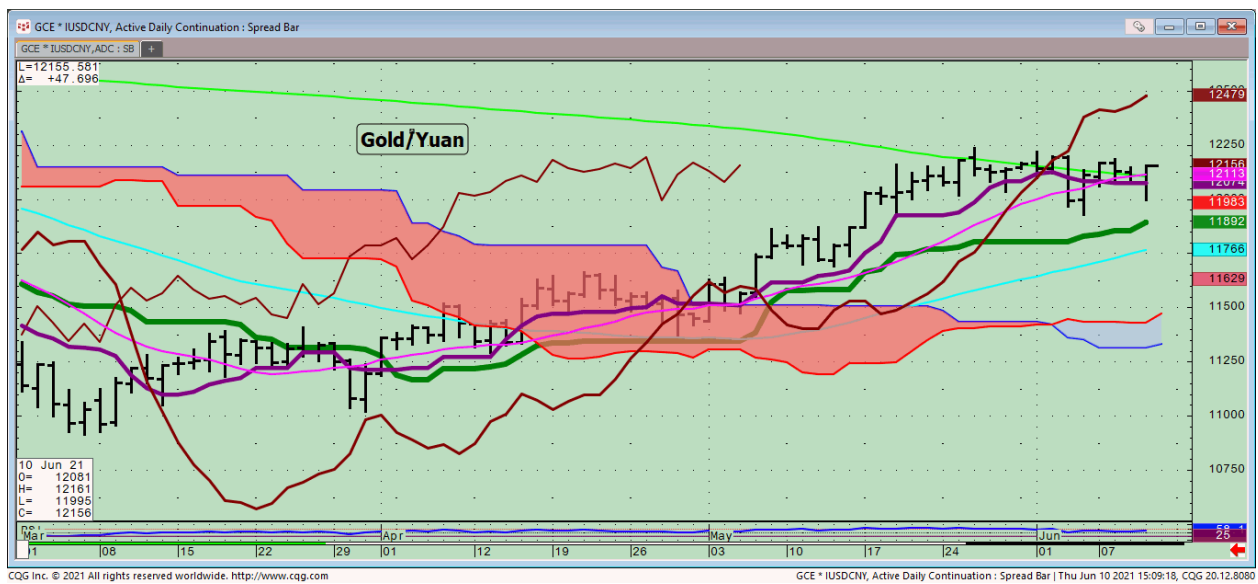
FX...

Commodities

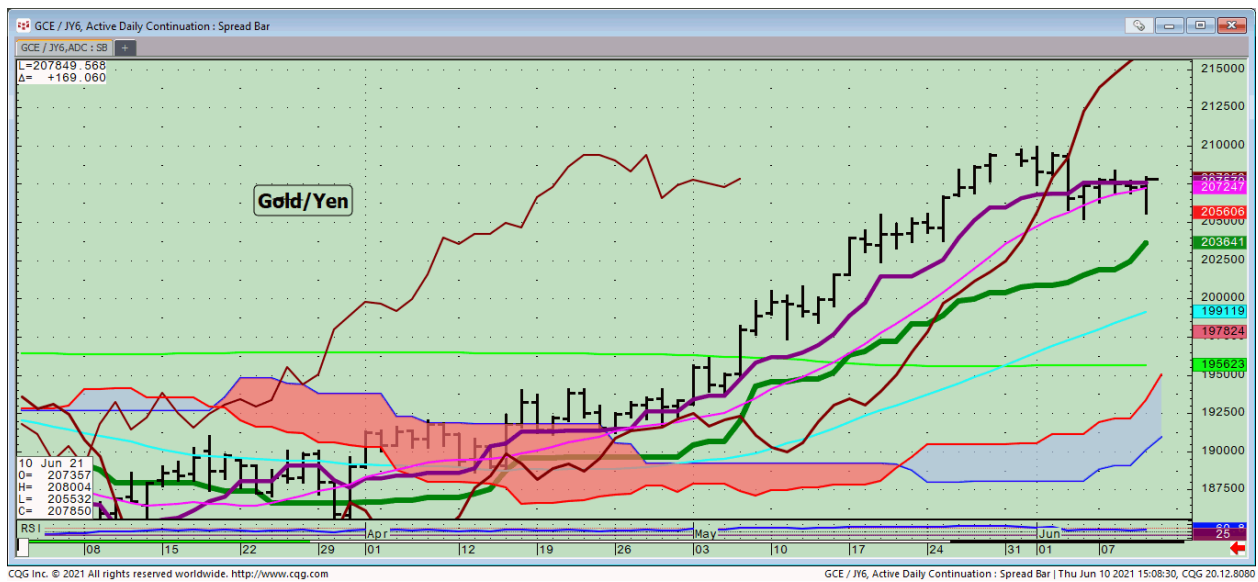
Gold...



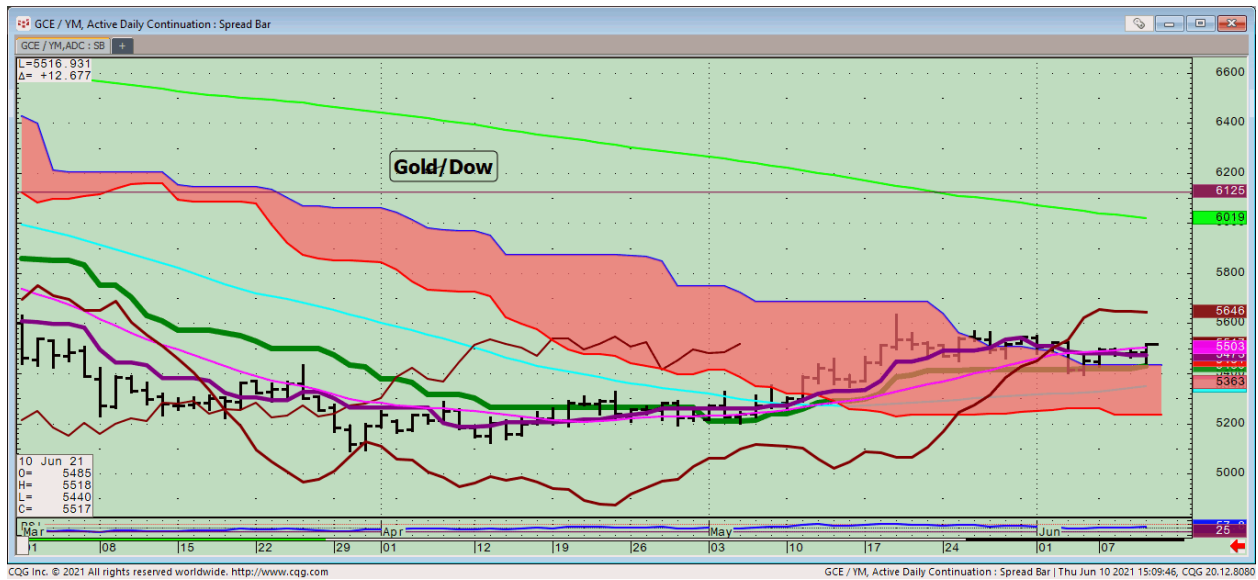
Gold in Yuan...



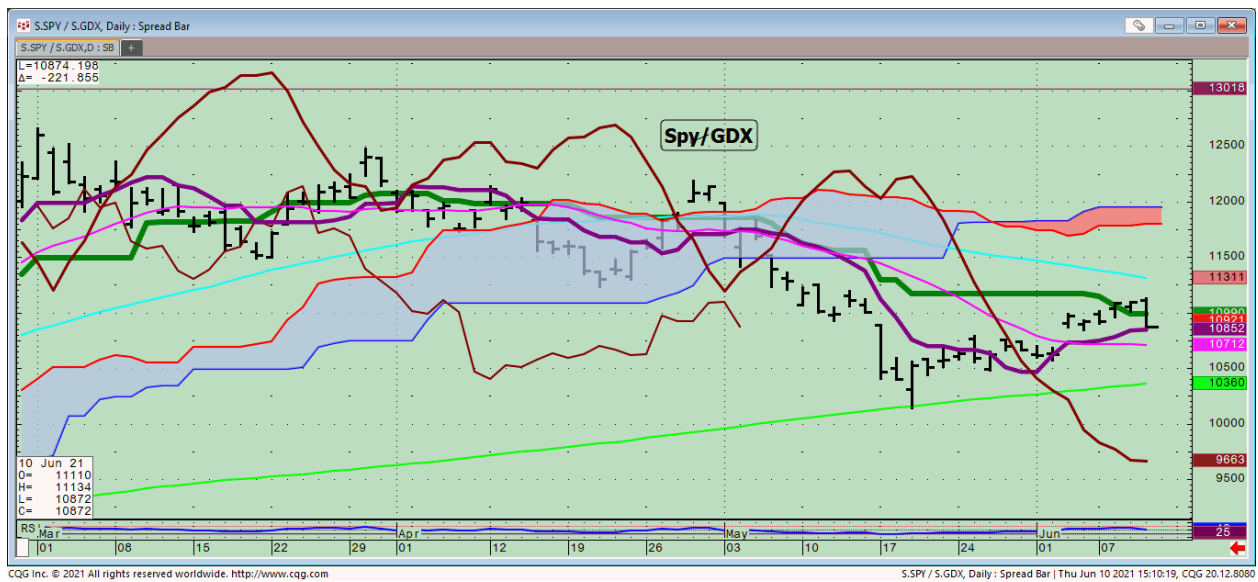
Gold/Yen...



Gold/Dow...



SPY/GDX...



General Comments or Valuable Insight

MEME names crashed and so did Russell.

Bonds led the Nasd and the Gold.

Gold against everything.

This should be a continuing theme going forward.

GOLD..Barrick bottomed today for another trip towards its 200 DMA.

Miners; throw a dart.

AU, EGO, NGD, HMY, BTG, WPM, SVM, FSM, KL, MUX,

**We Trade to Make Money
We don't trade to be right**

Judd's room is open.

Invites are sent before NYSE Opens.

I've started screen sharing just after 7 A.M. CDT. I start speaking @ 8:20.

Please check your spam folder or your Google calendar if you don't see an invite.

Not there? Just let me know in the A.M. to get one when the room opens.

W begin answering questions around 8:20 CDT.

I will review any instrument available on my platform and tell you what if anything I see

<http://www.whitewavetradingstrategies.com/glossary/>

WhiteWave Trading Strategies

Independent Research from the Pro's Pro

Chart Lines....Ichimoku

Green Bright...200 DMA **Aqua** 50 DMA **Blue**
Green 21 DMA **Fuchsia** 18 DMA **Yellow** 10
SMA

These are simple moving averages. When you roll a chart to weekly or monthly the averages are simple weekly or monthly mvg averages.

The **reddish purple** is an embedded Imoku line which acts as momentum.

The **leaf green** is an embedded Imoku line which calculates 50% retraces.

Brown line is where the Macd with histogram crosses. The line shows the visual on every time frame so you don't have to guess looking at the price of the cross in a line study.

