

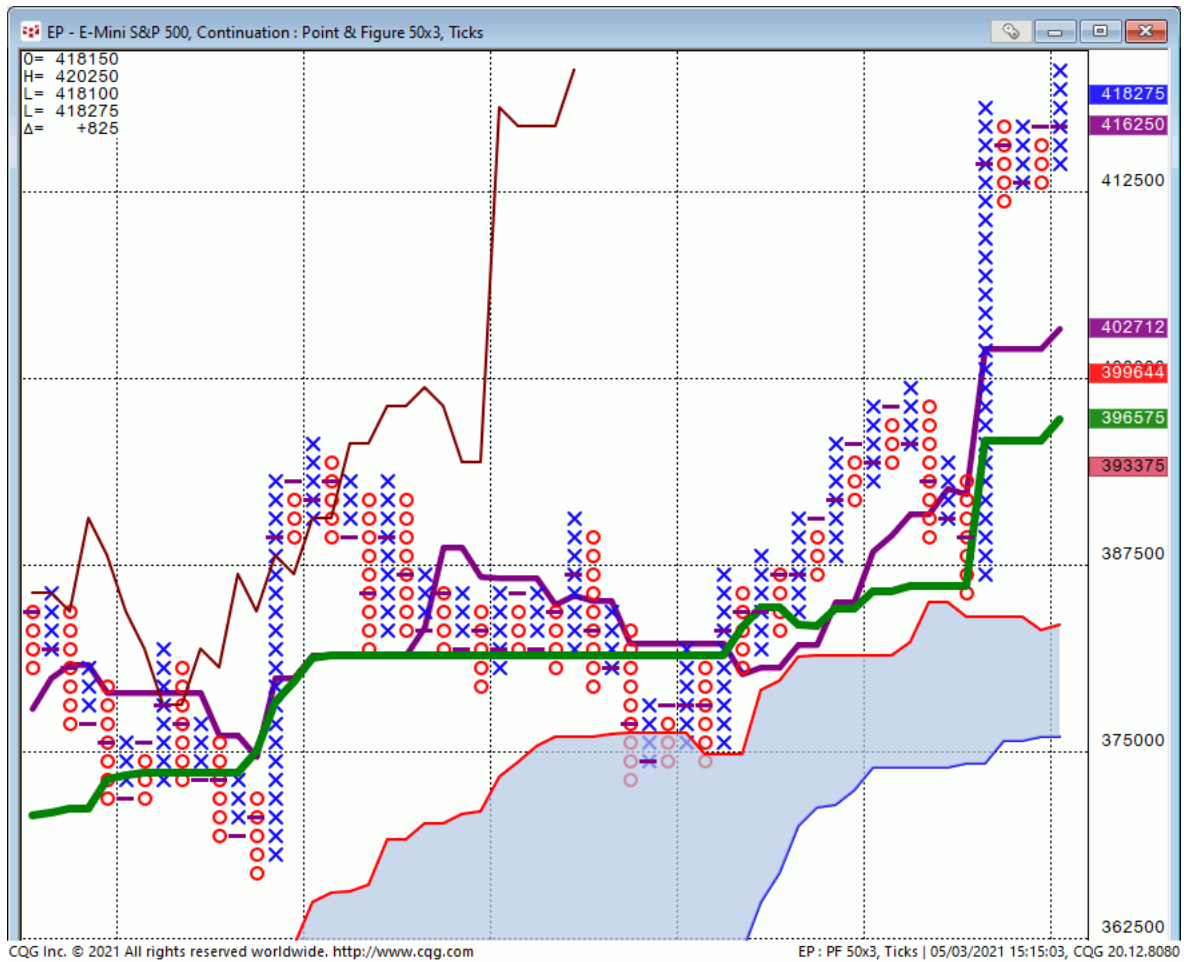


Daily Market Intelligence

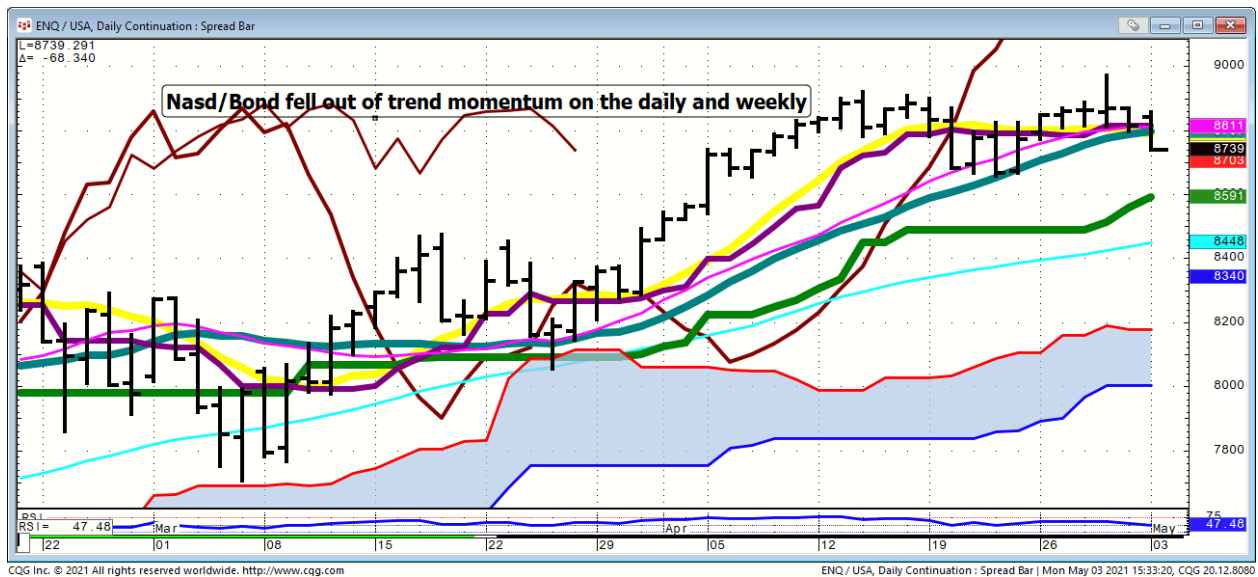
I am Bullish the models. I will go neutral if Spoo/Bond closes back below the 2018 high

Stock...

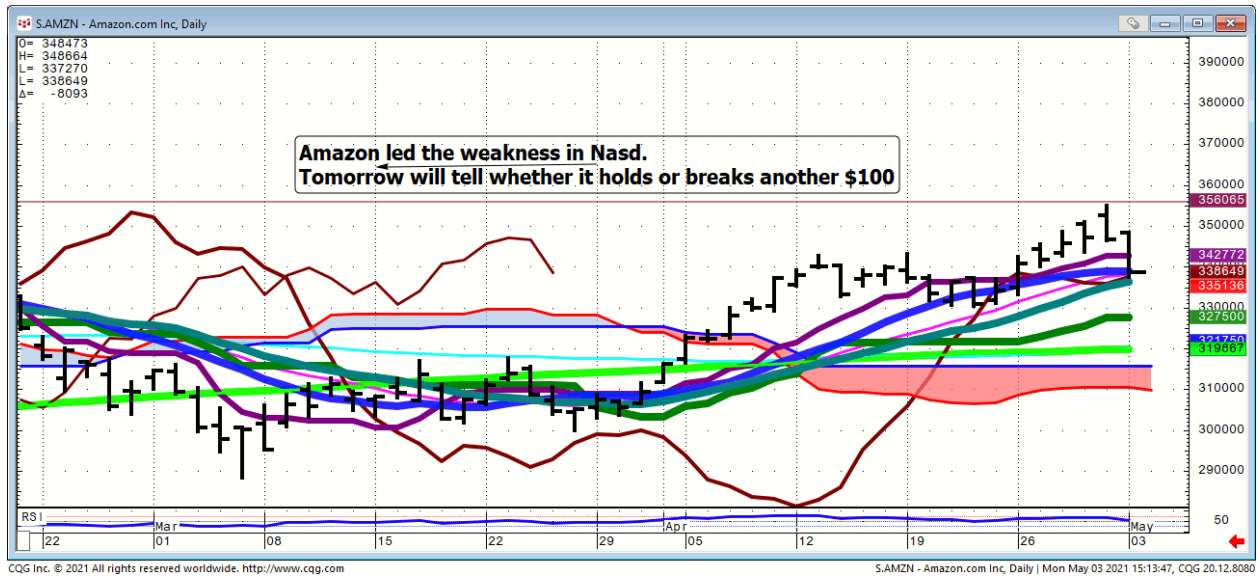
Spo...50X3



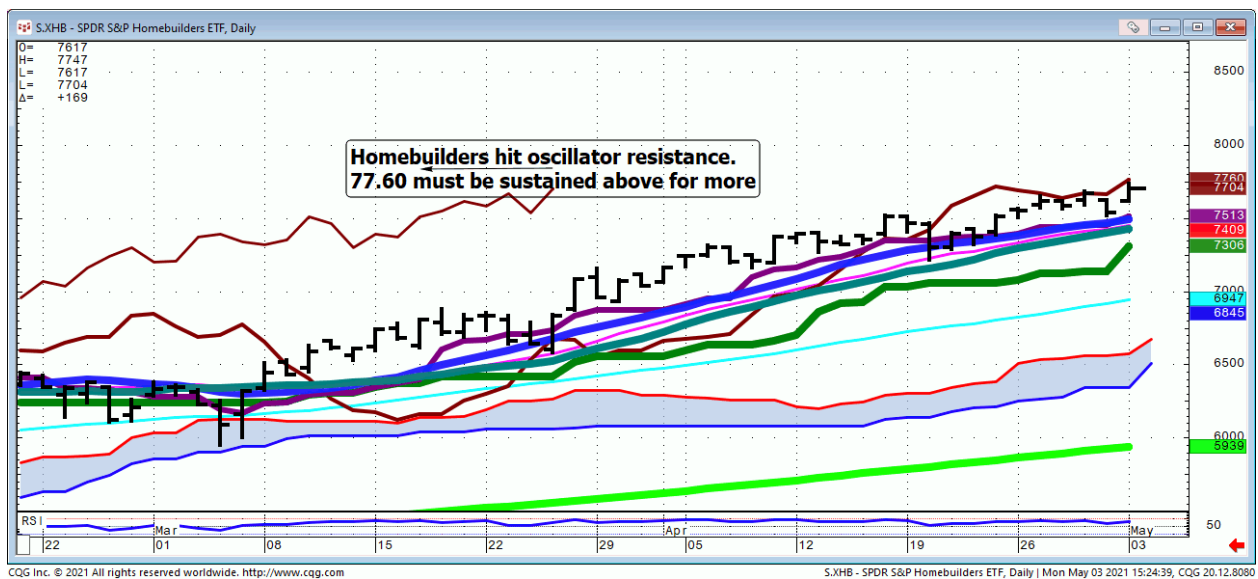
Nasd/Bond...



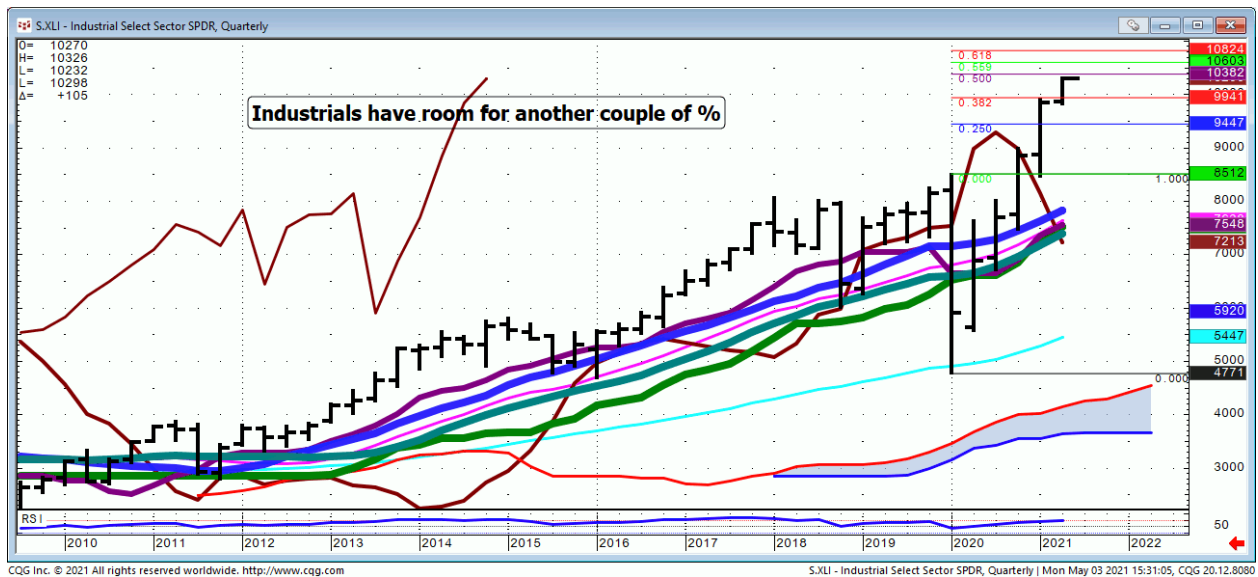
AMZN...



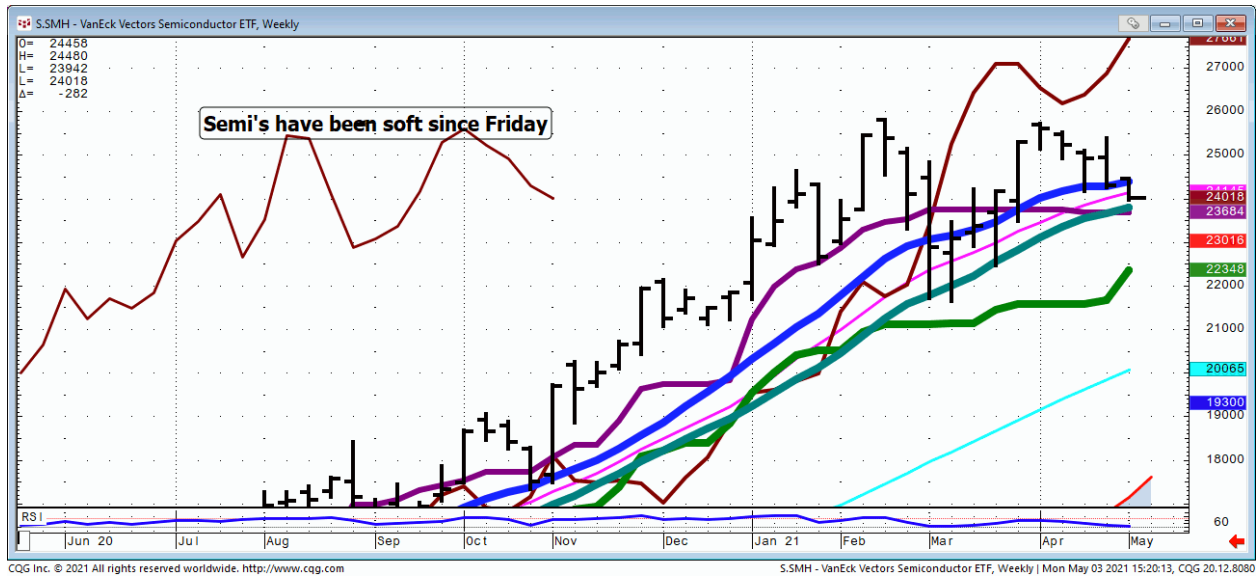
XHB...Reits struggled at the Monthly close and upside breakout level. Homebuilders need to be monitored closely



XLI...



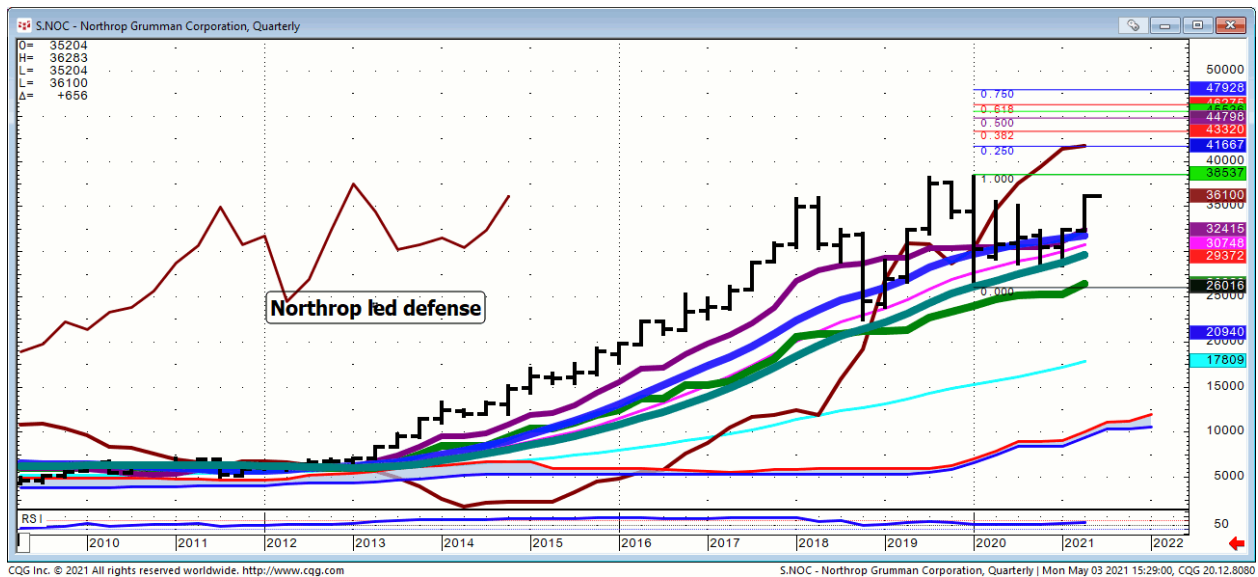
SMH...



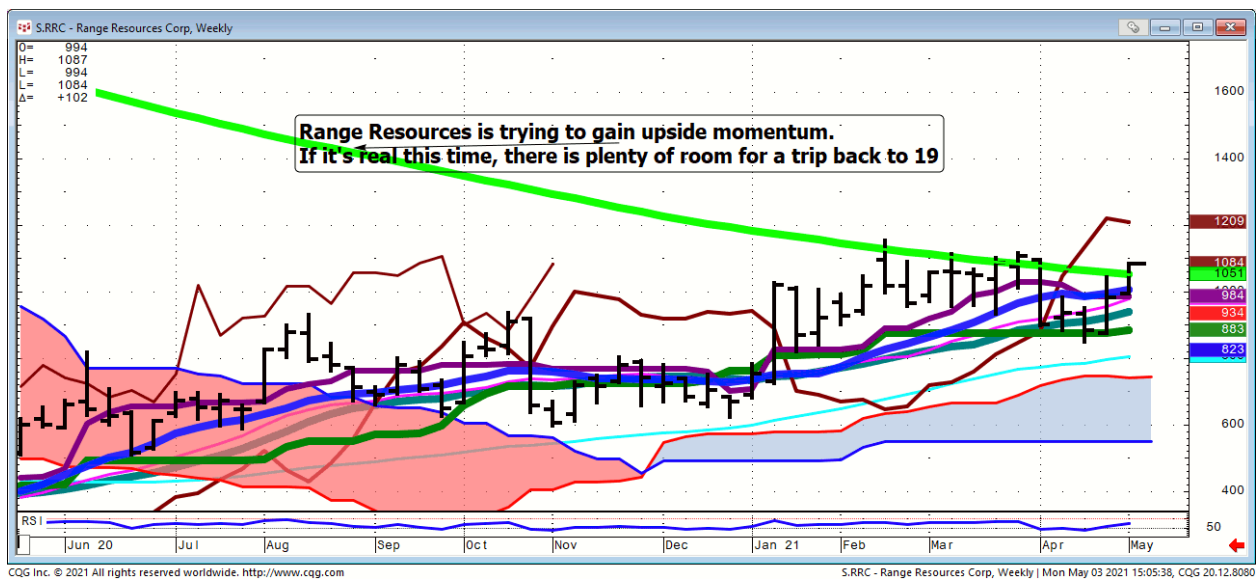
ITA...



NOC...



RRC...



WOOD ETF...Monthly Names have been previously featured

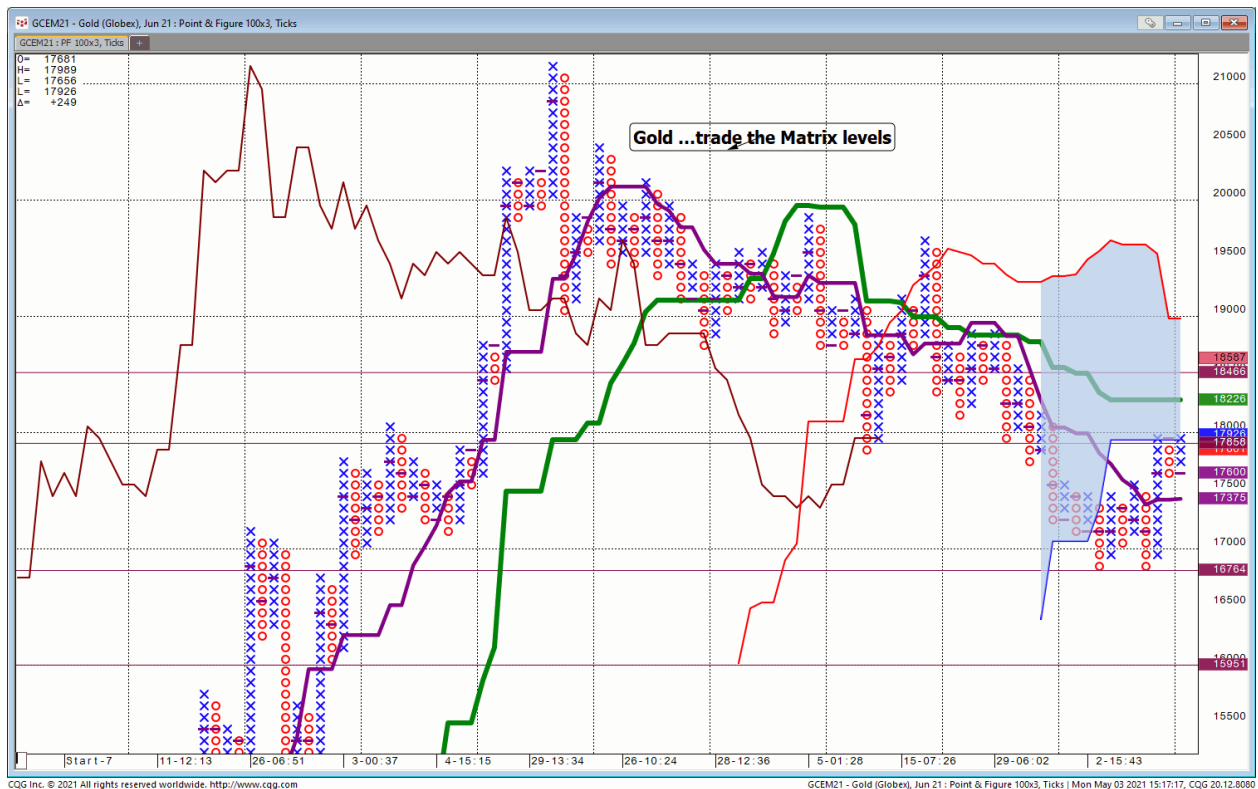


Bond...

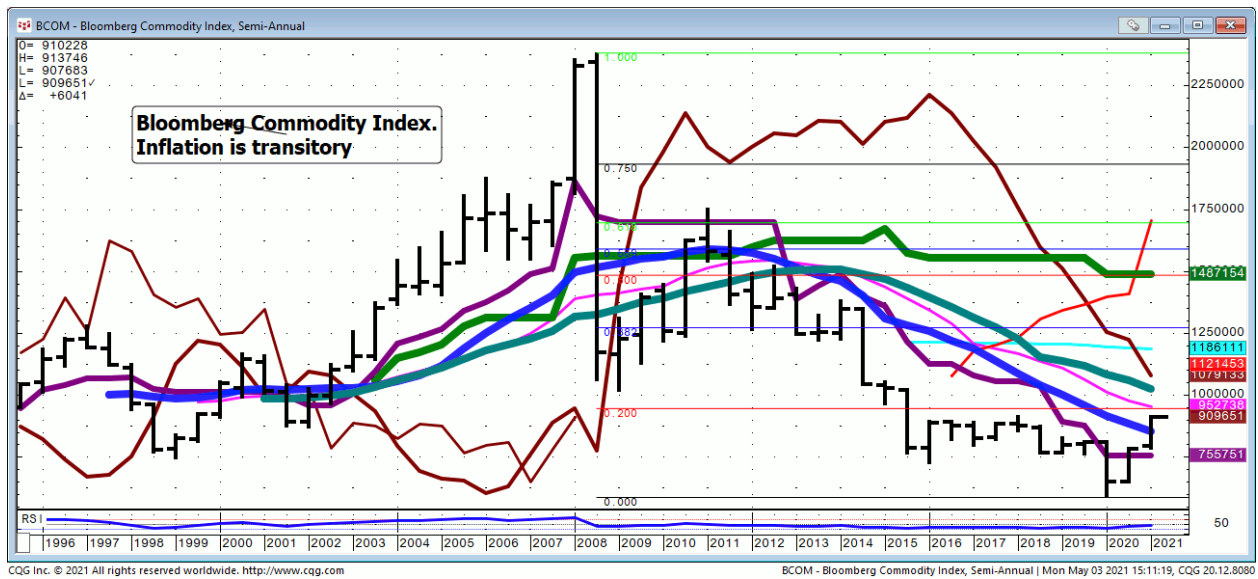
FX...

Commodities...

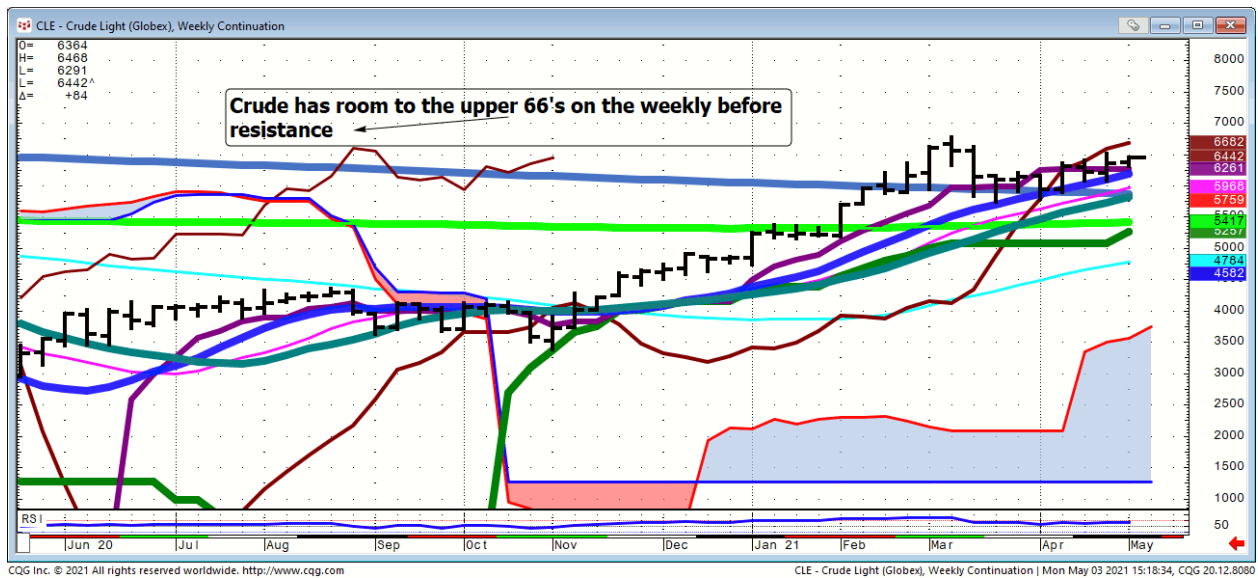
Gold...



BCOM...



Crude...



LUMBER...this should line up with the Homebuilders



General Comments or Valuable Insight

I'm taking this board one day at a time.

Big cap tech & semis did one thing with Defense, Oil & commodities doing another.

**We Trade to Make Money
We don't trade to be right**

Judd's room is open.

Invites are sent before NYSE Opens.

I've started screen sharing just after 7 A.M. CDT. I start speaking @ 8:20.

Please check your spam folder or your Google calendar if you don't see an invite.

Not there? Just let me know in the A.M. to get one when the room opens.

W begin answering questions around 8:20 CDT.

I will review any instrument available on my platform and tell you what if anything I see

<http://www.whitewavetradingstrategies.com/glossary/>

WhiteWave Trading Strategies

Independent Research from the Pro's Pro

Chart Lines....Ichimoku

Green Bright...200 DMA **Aqua** 50 DMA **Blue**
Green 21 DMA **Fuchsia** 18 DMA **Yellow** 10
SMA

These are simple moving averages. When you roll a chart to weekly or monthly the averages are simple weekly or monthly mvg averages.

The **reddish purple** is an embedded Imoku line which acts as momentum.

The **leaf green** is an embedded Imoku line which calculates 50% retraces.

Brown line is where the Macd with histogram crosses. The line shows the visual on every time frame so you don't have to guess looking at the price of the cross in a line study.

