

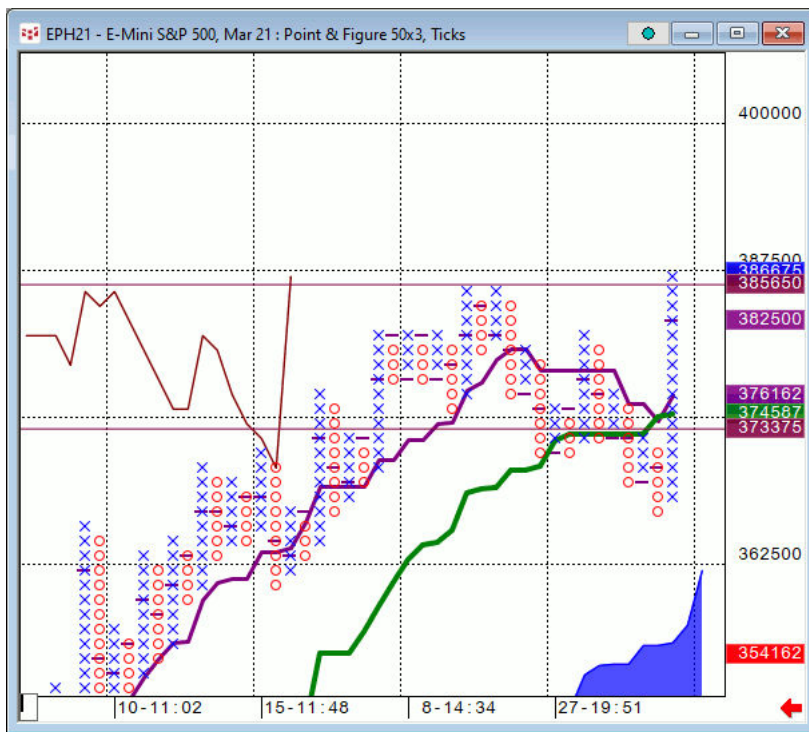


## Daily Market Intelligence

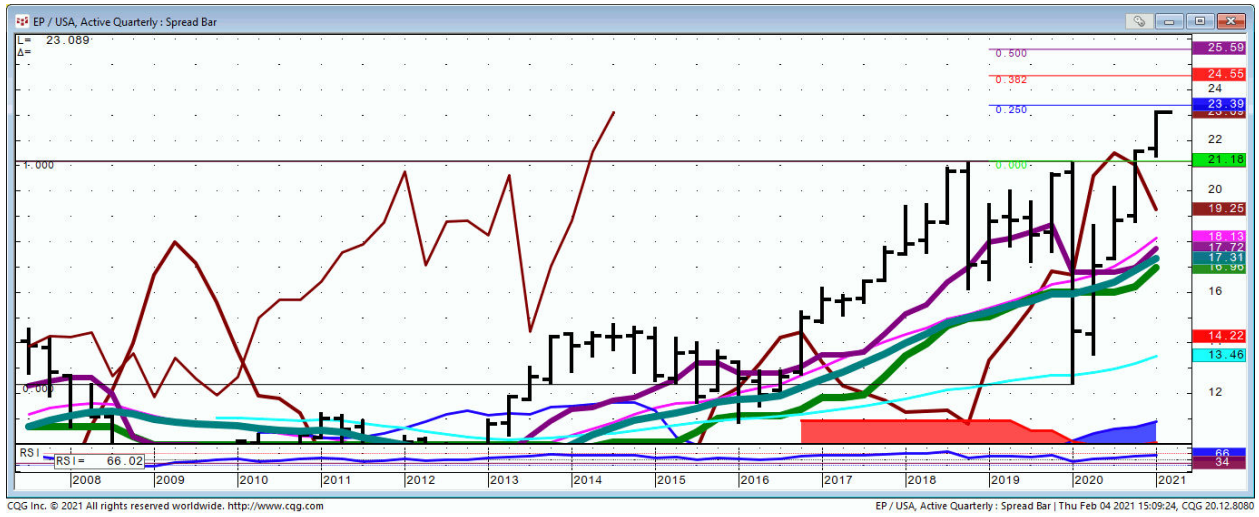
**I am Bullish the models. I will go neutral if Spoo/Bond closes back below the 2018 high**

Stock...

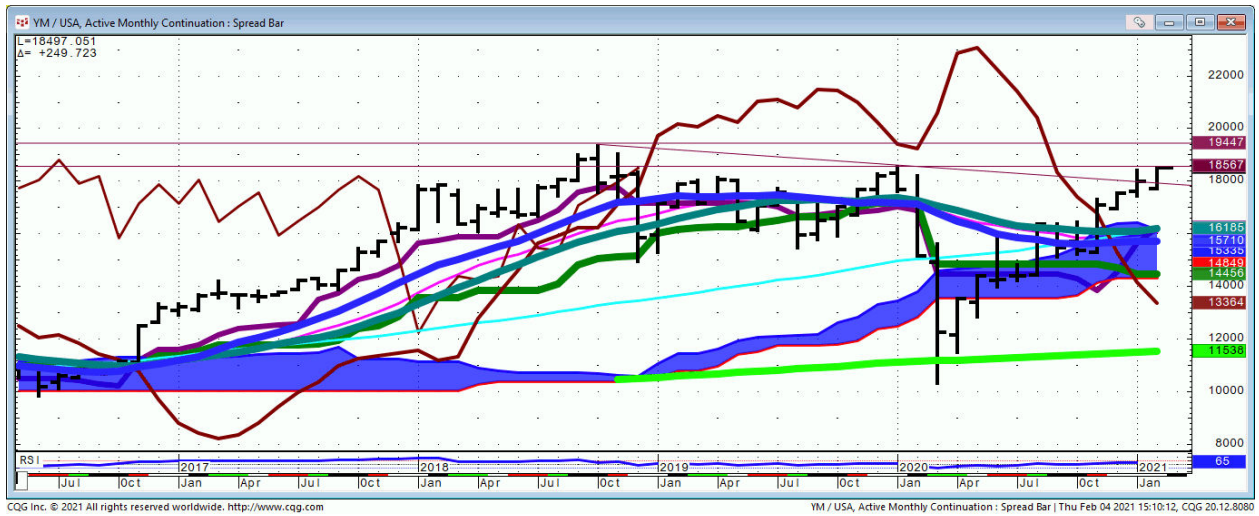
Spo...50X3.



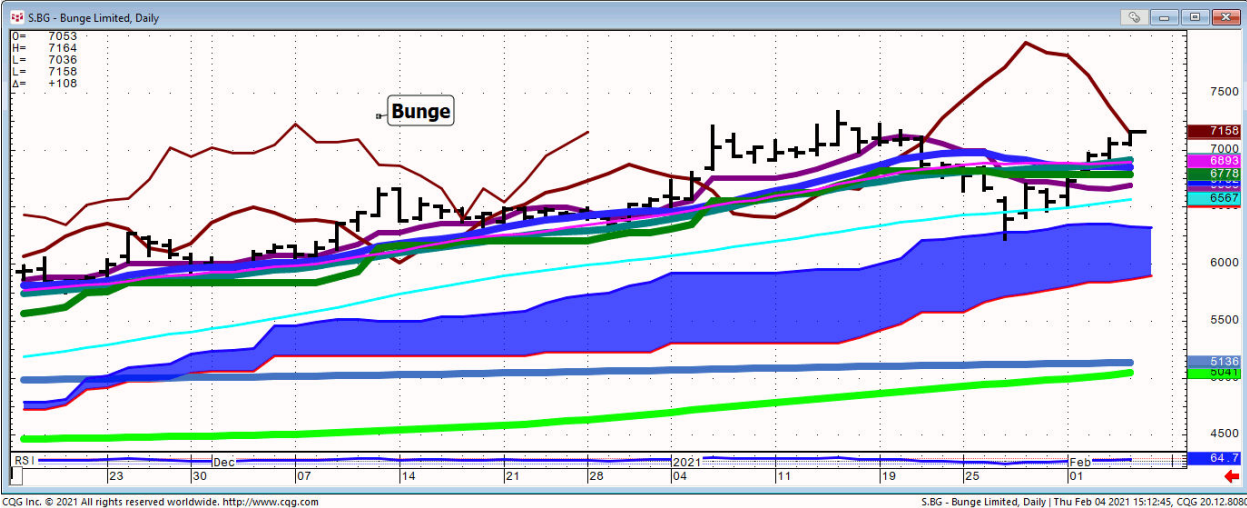
# Spoo/Bond...Qtrly



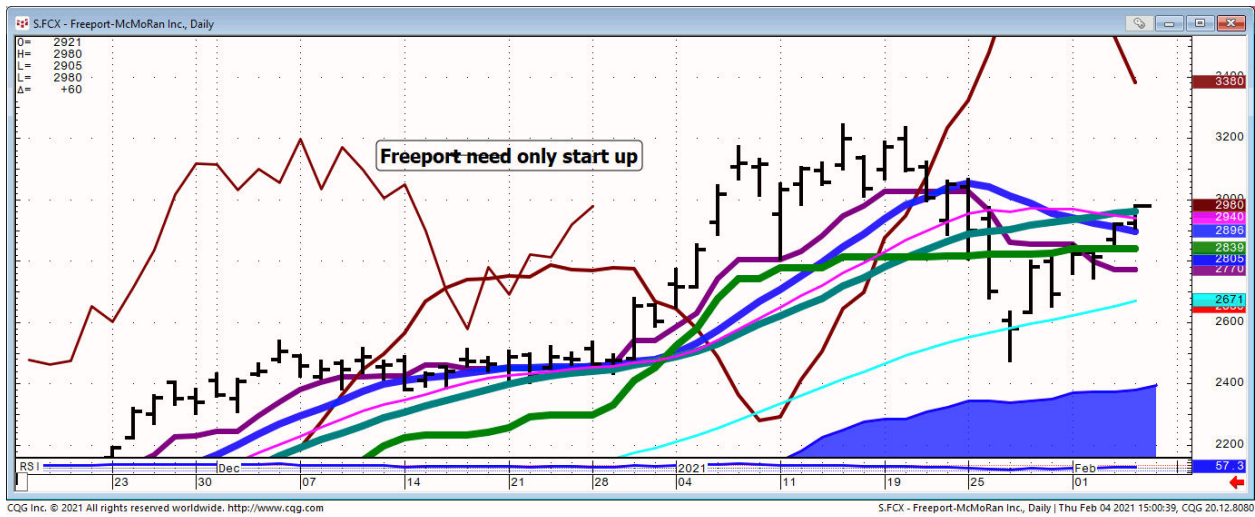
# DJI/Bond...



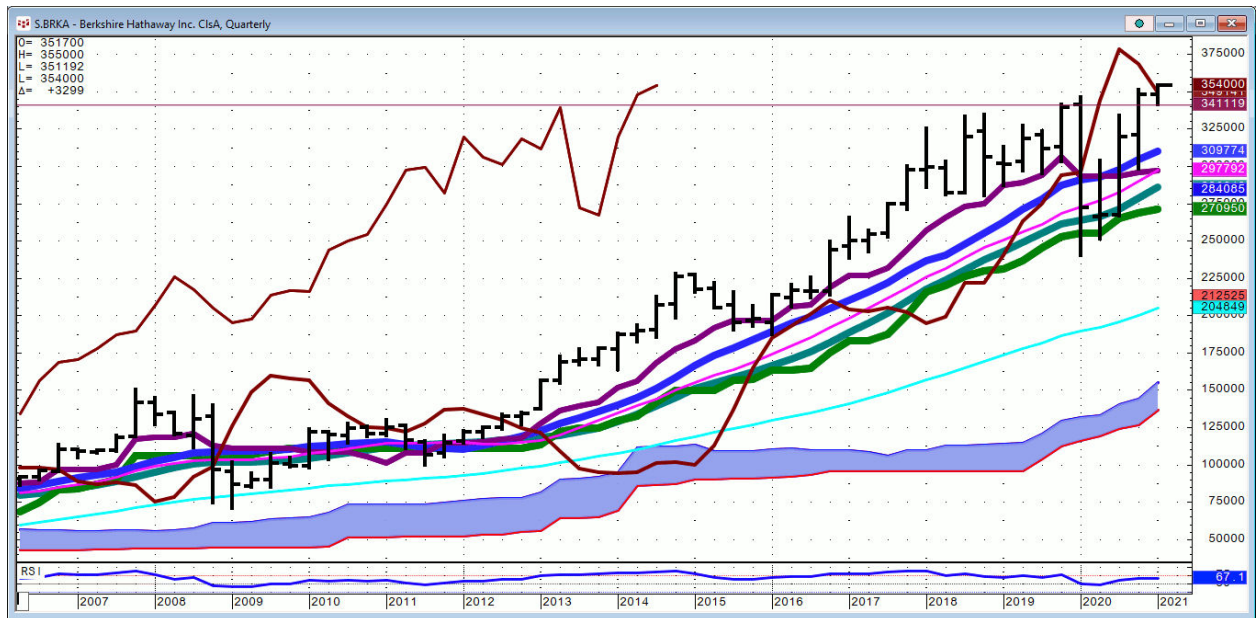
**BG...going higher**



**FCX...SCCO put in an ORH. Both just need to start up.**



# BRKA...



***Bond...***

***FX...***

***Commodities...***

**General Comments or Valuable Insight**

**Yra stopped in late to discuss the Dollar, Metals and the Long end of the curve.**

**Tomorrow will be all about the 30 Yr. price action.**

**Euro, USDJPY, 30 Yr. Futures are @ major inflection levels.**

**Listen and watch the video. It's all there.**

**<https://youtu.be/A17lorxpvQk>**

**We Trade to Make Money  
We don't trade to be right**

**Judd's room is open.  
Invites are sent before NYSE Opens.**

**I've started screen sharing just after 7 A.M.  
CDT. I start speaking @ 8:20.**

**Please check your spam folder or your Google  
calendar if you don't see an invite.**

**Not there? Just let me know in the A.M. to get one  
when the room opens.**

**W begin answering questions around 8:20 CDT.**

**I will review any instrument available on my  
platform and tell you what if anything I see**

<http://www.whitewavetradingstrategies.com/glossary/>

**WhiteWave Trading Strategies  
Independent Research from the Pro's Pro**

## Chart Lines....Ichimoku

**Green Bright**...200 DMA **Aqua** 50 DMA **Blue Green** 21 DMA **Fuchsia** 18 DMA **Yellow** 10 SMA

These are simple moving averages. When you roll a chart to weekly or monthly the averages are simple weekly or monthly mvg averages.

The **reddish purple** is an embedded Imoku line which acts as momentum.

The **leaf green** is an embedded Imoku line which calculates 50% retraces.

**Brown line** is where the Macd with histogram crosses. The line shows the visual on every time frame so you don't have to guess looking at the price of the cross in a line study.

