



Daily Market Intelligence

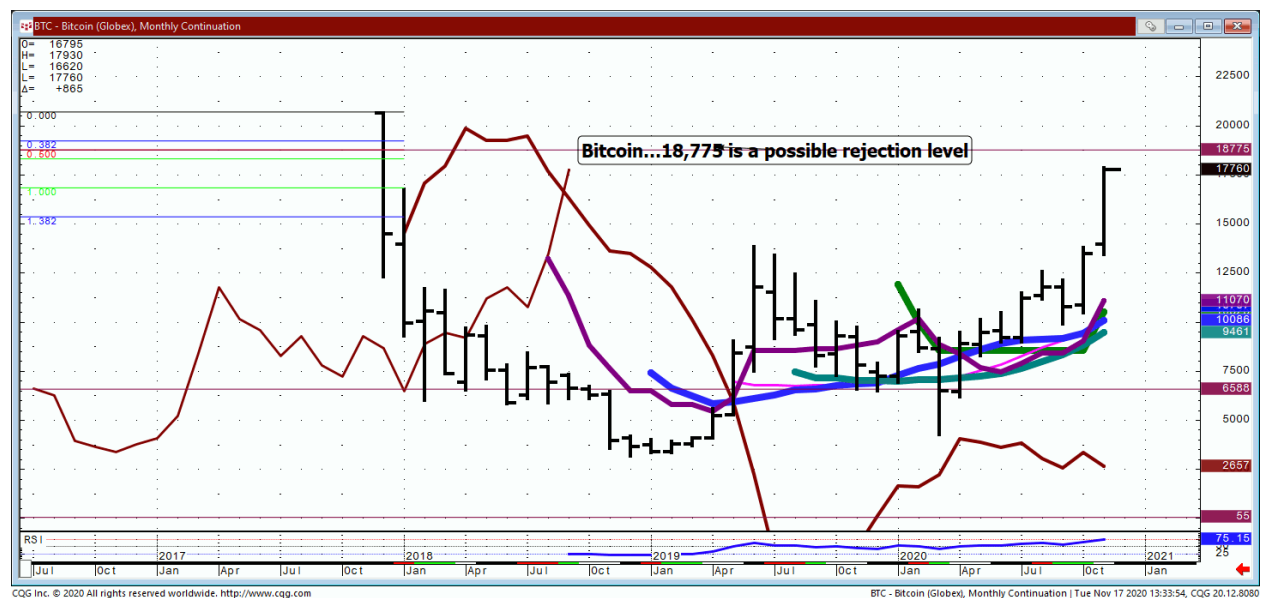
**Models are Neutral**

Stock...

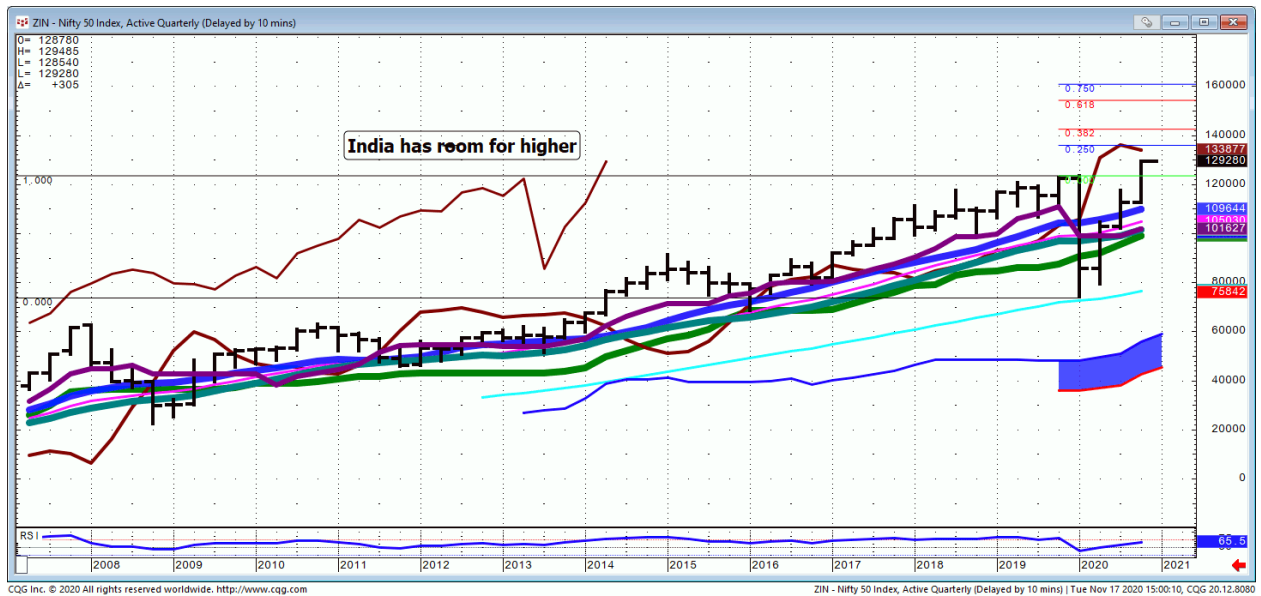
ASX...Qtrly



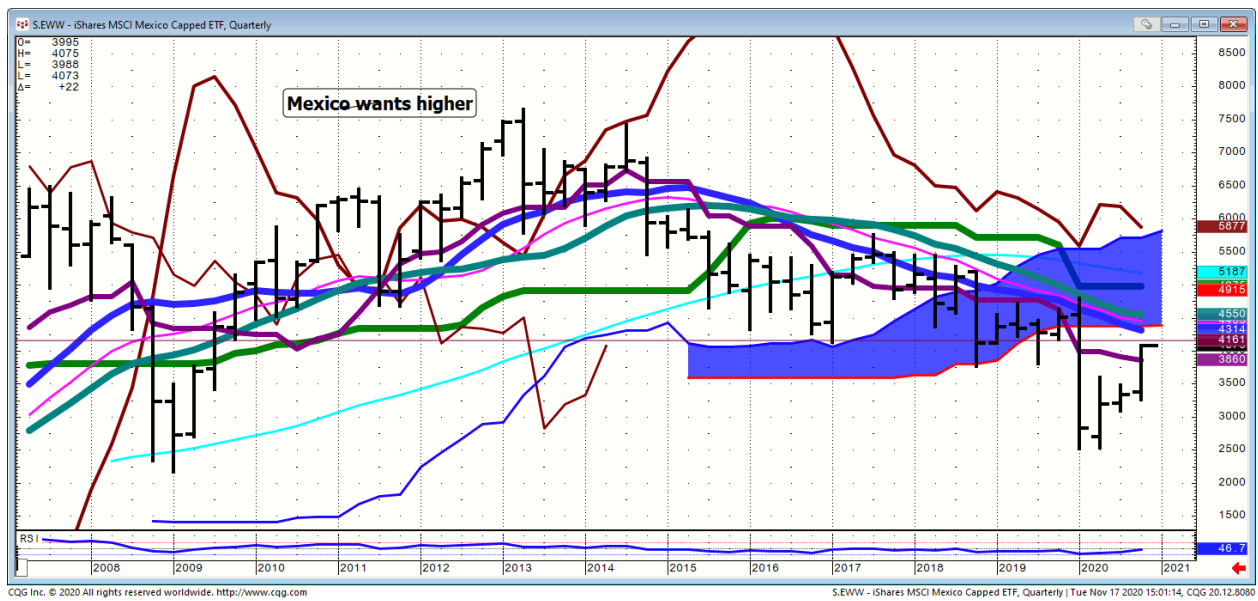
## EWT...Monthly



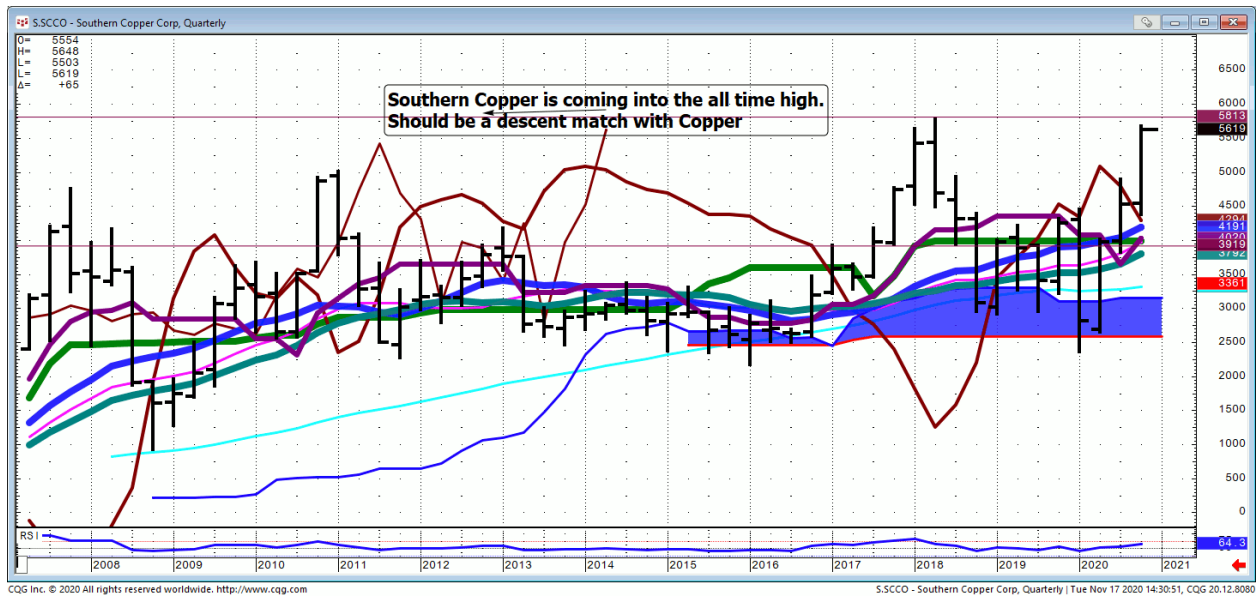
## India...Nifty Fifty Qtrly



## EWV...Qtrly



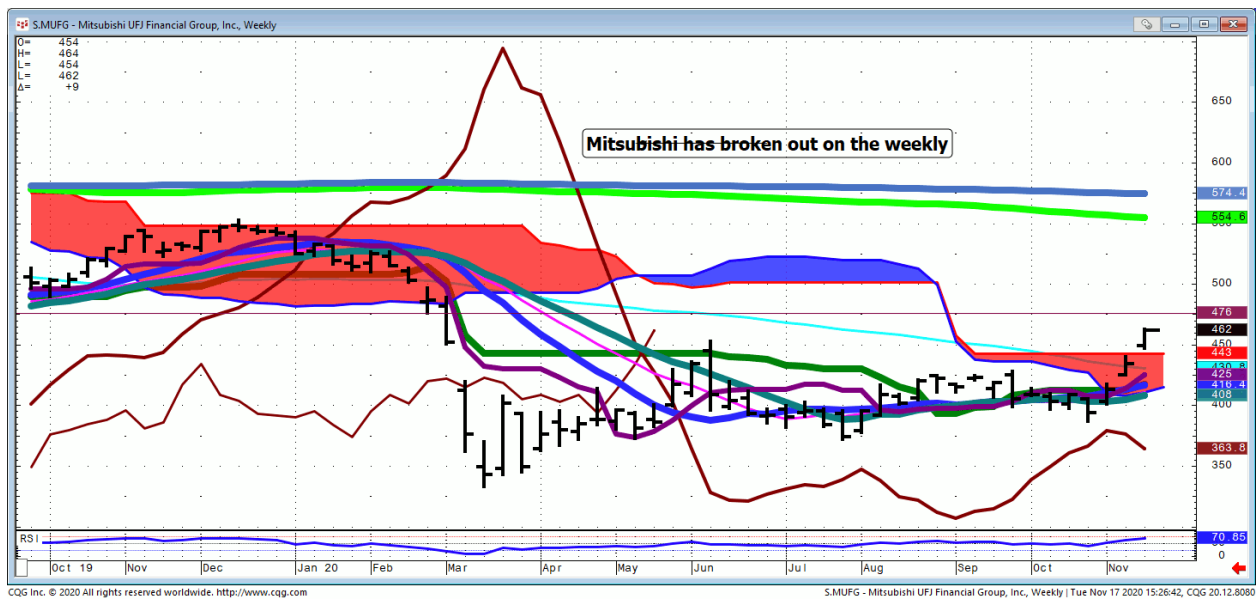
## SCCO...Qtrly



## UBS...one of Yra's picks



## MUFG...





***Bond...***

***FX...***

**Bitcoin...**

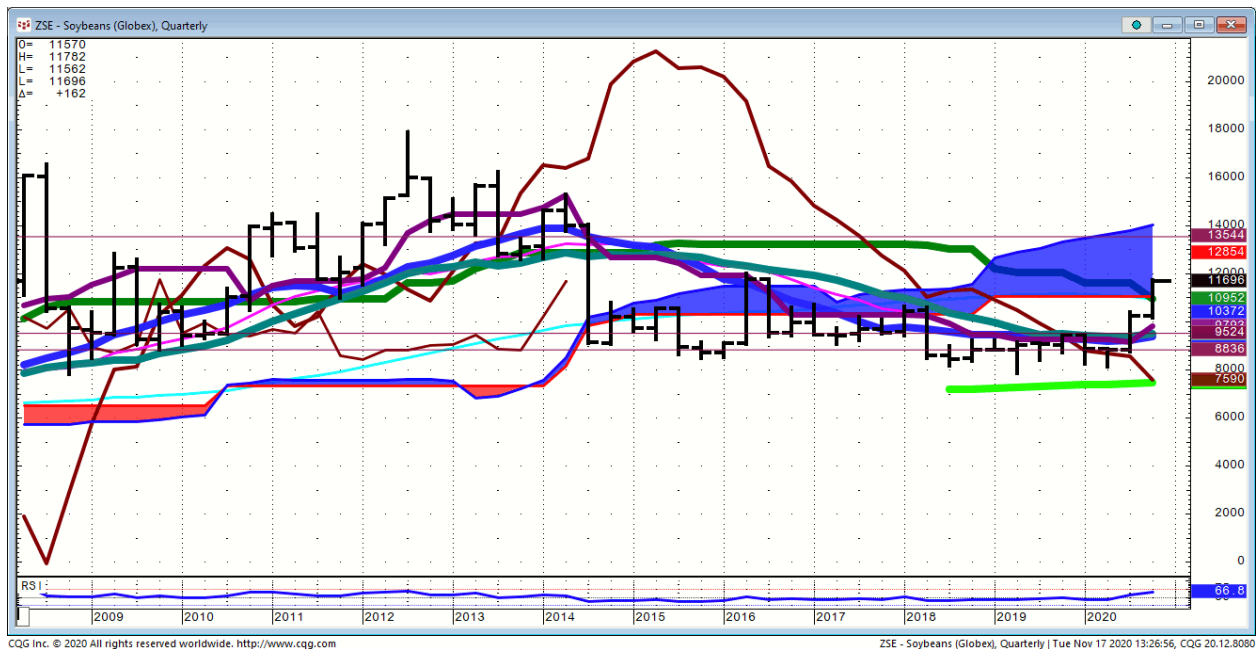


## Mexican Peso...



## Commodities...

### Soybeans...



### **General Comments or Valuable Insight**

**Russell is leading in the U.S., I'm looking for another 200 points.**

**Bloomberg conference participants today were all touting Bitcoin. It shows the effect.**

**Spoo/Bond...being patient for the breakout by being a buyer of breaks in the Indices.**

**Yra and Andrew were conversing about the markets and potential Biden cabinet picks.**

**Yellen Secretary of Treasury with Lael Brainard as Fed Chief could harmonize Fiscal and Monetary policy, lighting a fire under risk assets.**

**Boeing has been back in vogue. For the past 3 sessions. Look for more upside as the world normalizes.**

**We Trade to Make Money  
We don't trade to be right**

**Judd's room is open.  
Invites are sent before NYSE Opens.**

**I've started screen sharing just after 7 A.M.  
CDT. I start speaking @ 8:20.**

**Please check your spam folder or your Google  
calendar if you don't see an invite.**

**Not there? Just let me know in the A.M. to get one  
when the room opens.**

**W begin answering questions around 8:20 CDT.**

**I will review any instrument available on my  
platform and tell you what if anything I see**

<http://www.whitewavetradingstrategies.com/glossary/>

**WhiteWave Trading Strategies  
Independent Research from the Pro's Pro**

## Chart Lines....Ichimoku

**Green Bright**...200 DMA **Aqua** 50 DMA **Blue**  
**Green** 21 DMA **Fuchsia** 18 DMA **Yellow** 10  
SMA

These are simple moving averages. When you roll a chart to weekly or monthly the averages are simple weekly or monthly mvg averages.

The **reddish purple** is an embedded Imoku line which acts as momentum.

The **leaf green** is an embedded Imoku line which calculates 50% retraces.

**Brown line** is where the Macd with histogram crosses. The line shows the visual on every time frame so you don't have to guess looking at the price of the cross in a line study.

