

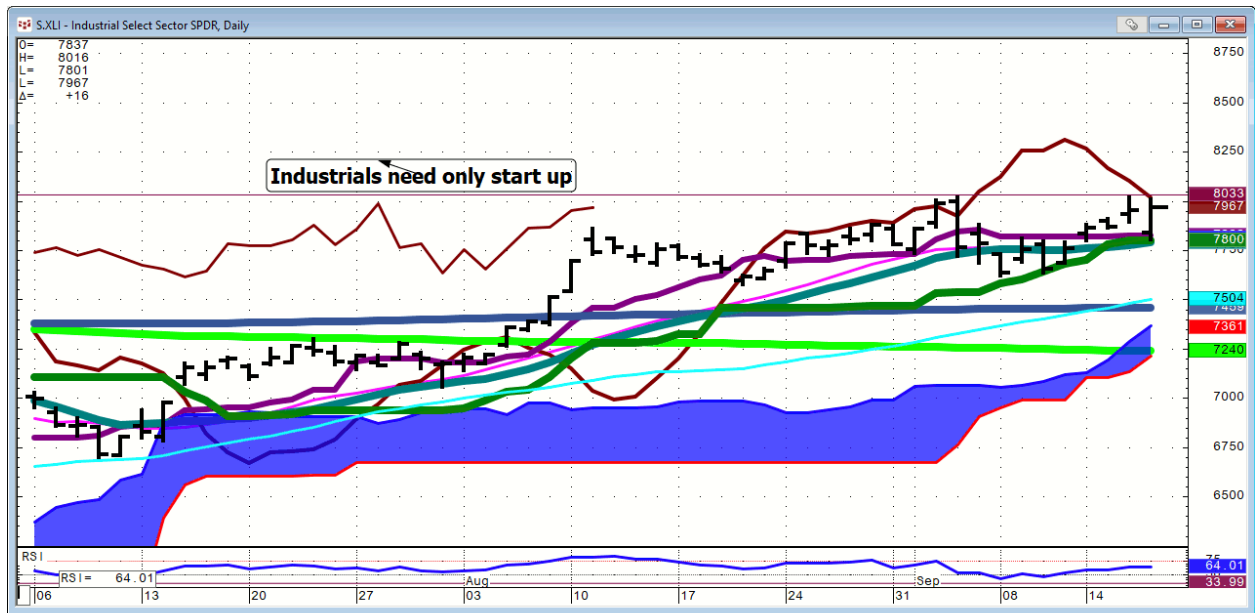


Daily Market Intelligence

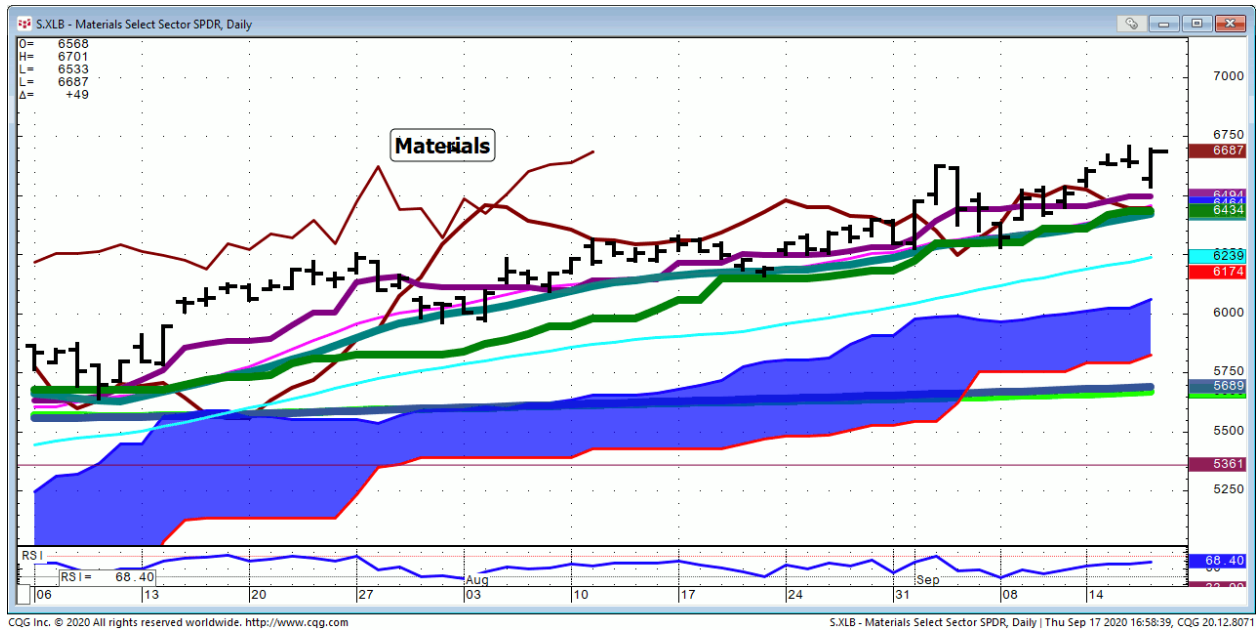
Models are Neutral

Stock...

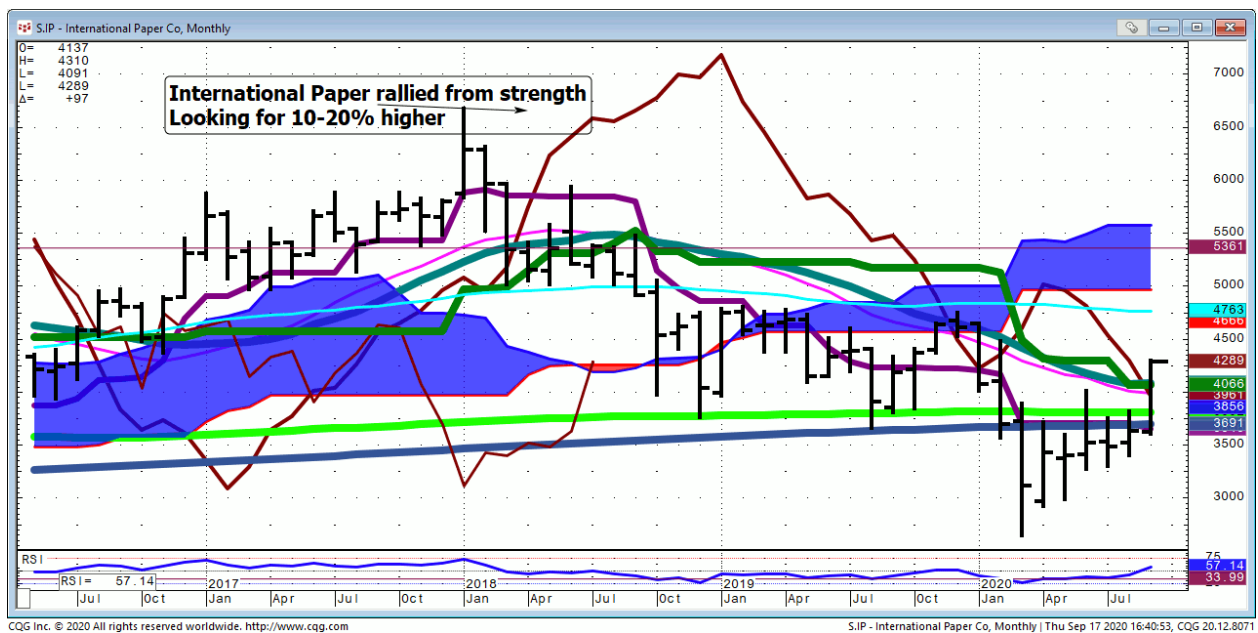
XLI...



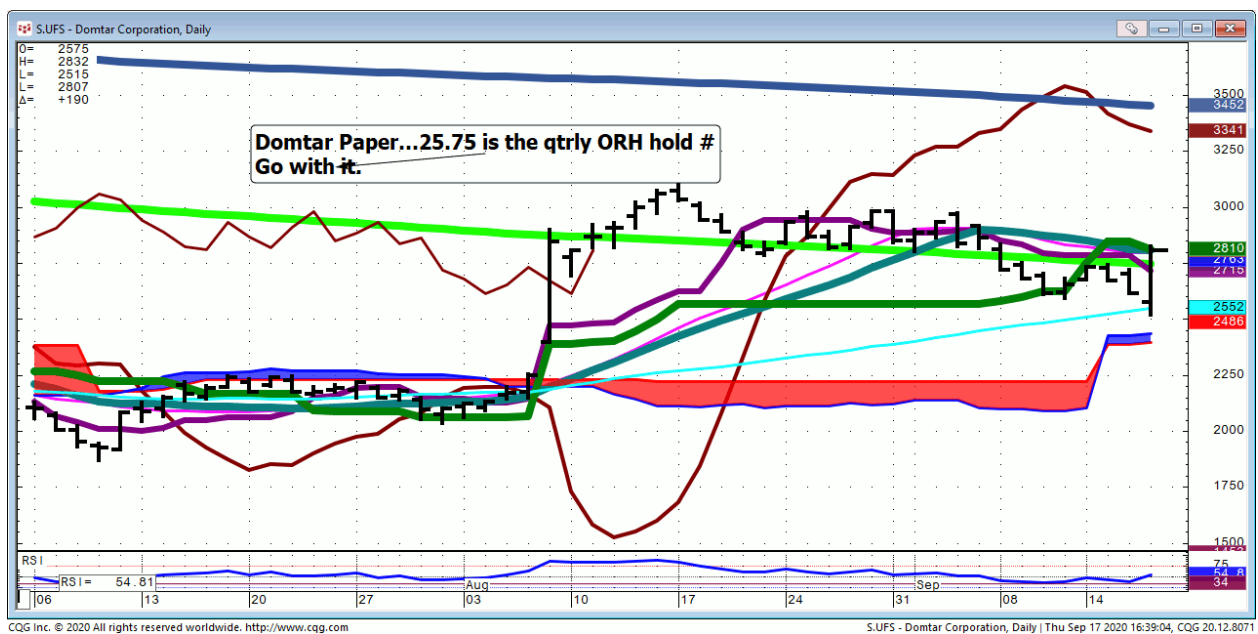
XLB...



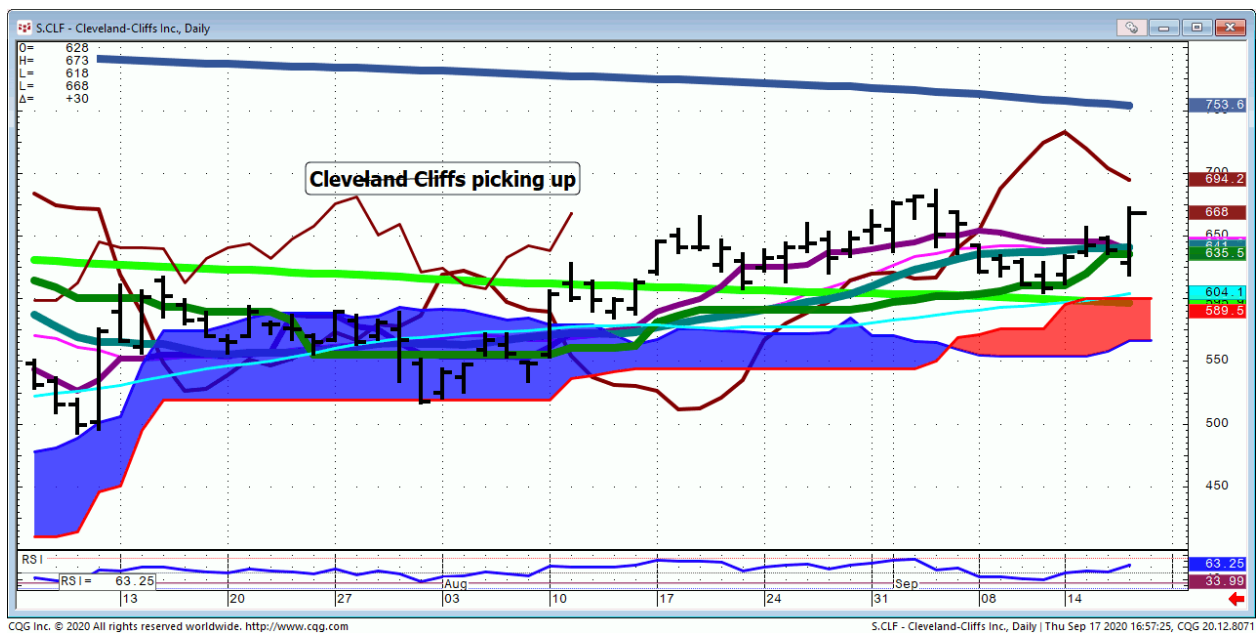
IP...



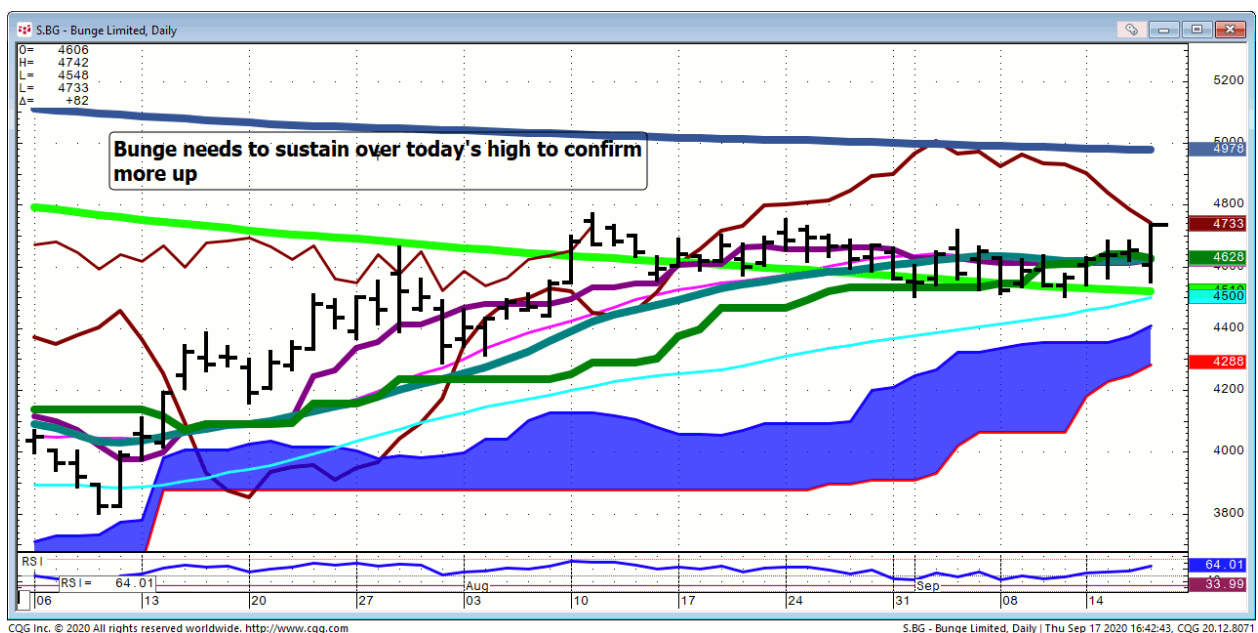
UFS...



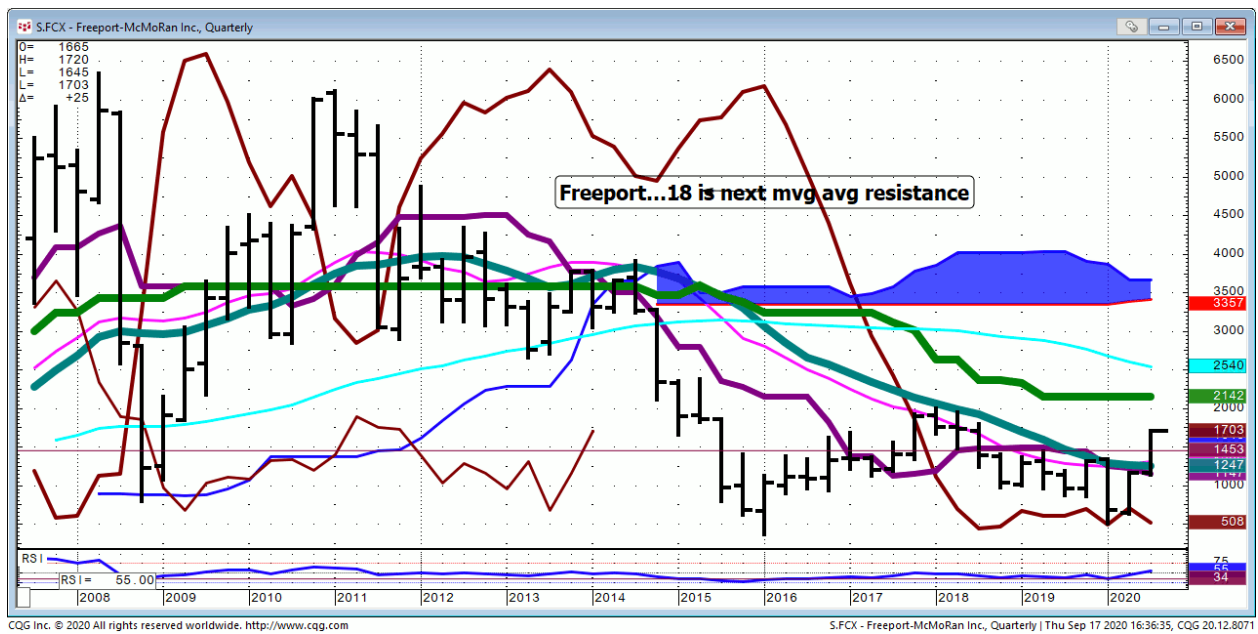
CLF...



BG...ADM is going as well



FCX...



ZM...

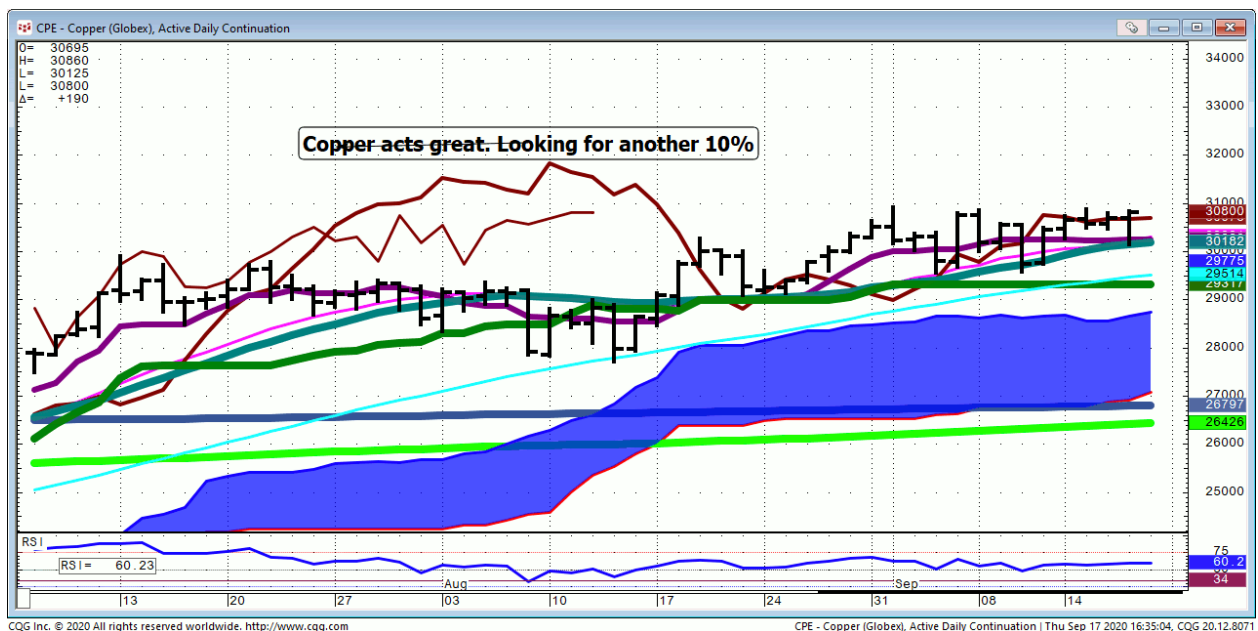


Bond...

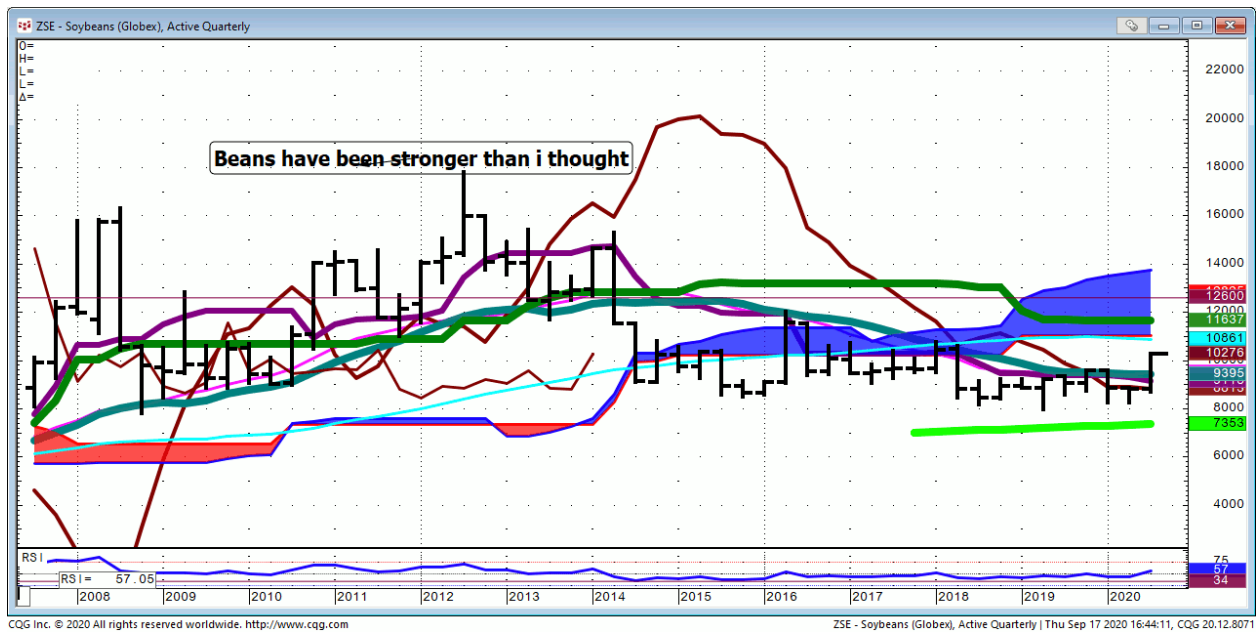
FX...

Commodities...

Copper...



Soybeans...



General Comments or Valuable Insight

The room hopped on the long side early and exited @ the Gap in the Spoo's. 35 Point wiggle to start the day.

It was all rotation into Industrials and Materials and paring FANG.

DE, MMM, CAT, CMI, HON the list goes on.

**Fearless leader is buying some farm votes!
Likely why ag was on fire all day.**

**<https://twitter.com/kaylatausche/status/1306695329631342592?s=10>
<https://twitter.com/dustinpwalsh/status/1306697723987611648?s=10>**

There will be no DMI over the weekend.

The Room will be open tomorrow.

La Shana Tova

Wishing all a happy, healthy and prosperous New Year

**We Trade to Make Money
We don't trade to be right**

Judd's room is open.

Invites are sent before NYSE Opens.

I've started screen sharing just after 7 A.M. CDT. I start speaking @ 8:20.

Please check your spam folder or your Google calendar if you don't see an invite.

Not there? Just let me know in the A.M. to get one when the room opens.

We begin answering questions around 8:20 CDT.

I will review any instrument available on my platform and tell you what if anything I see

<http://www.whitewavetradingstrategies.com/glossary/>

WhiteWave Trading Strategies

Independent Research from the Pro's Pro

Chart Lines....Ichimoku

Green Bright...200 DMA **Aqua** 50 DMA **Blue**
Green 21 DMA **Fuchsia** 18 DMA **Yellow** 10
SMA

These are simple moving averages. When you roll a chart to weekly or monthly the averages are simple weekly or monthly mvg averages.

The **reddish purple** is an embedded Imoku line which acts as momentum.

The **leaf green** is an embedded Imoku line which calculates 50% retraces.

Brown line is where the Macd with histogram crosses. The line shows the visual on every time frame so you don't have to guess looking at the price of the cross in a line study.

