



## Daily Market Intelligence

**Bullish DJI**

**Bullish Spoo's**

**Bullish Nasd 100**

**Bullish Nikkei**

**Bullish DAX**

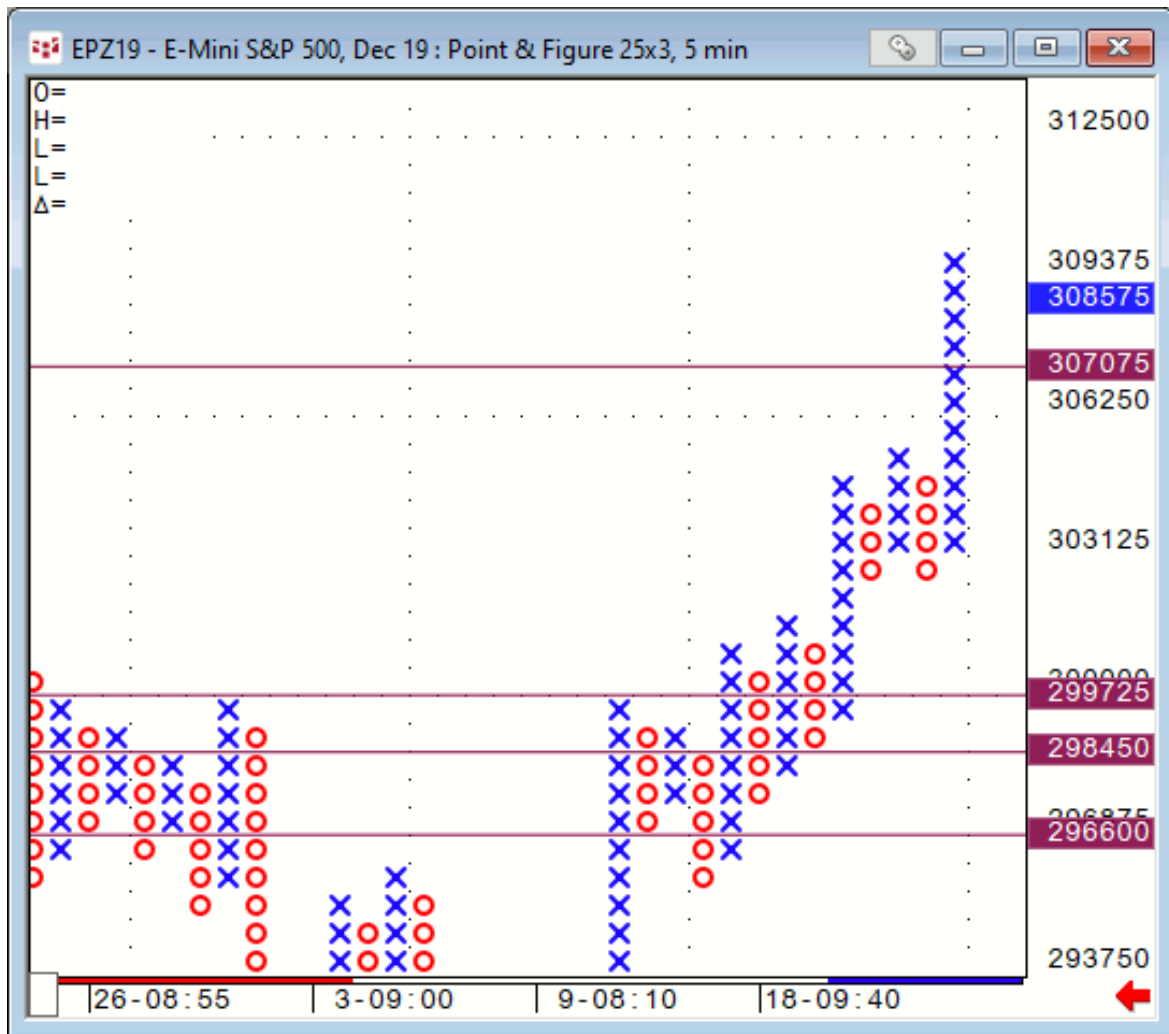
**Neutral U.S. Bond Market**

**Risk Spreads are Bullish Nasd, Spoo & DJI**

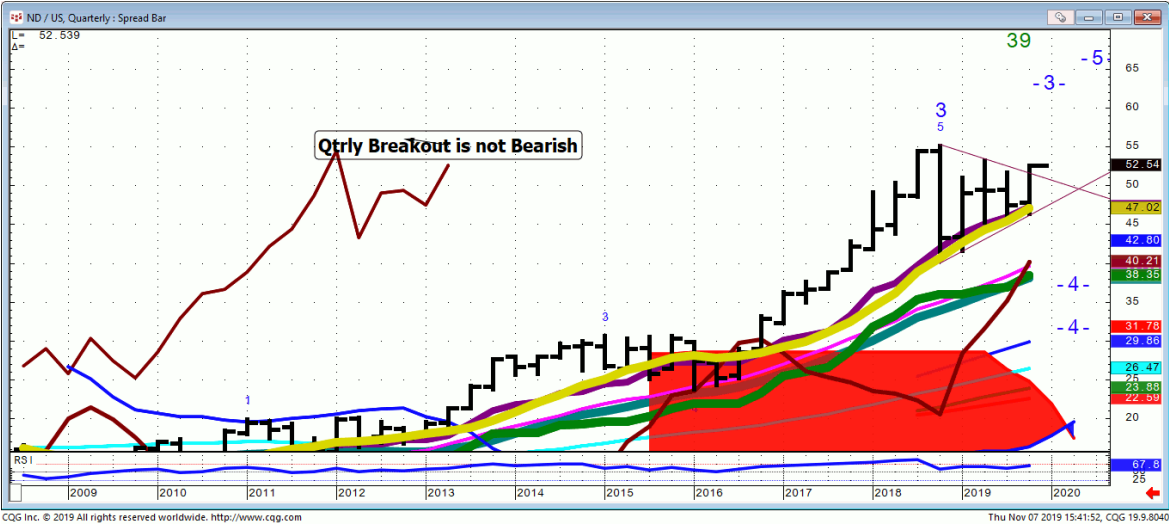
**Risk Spreads are Neutral Russell**

Stock...

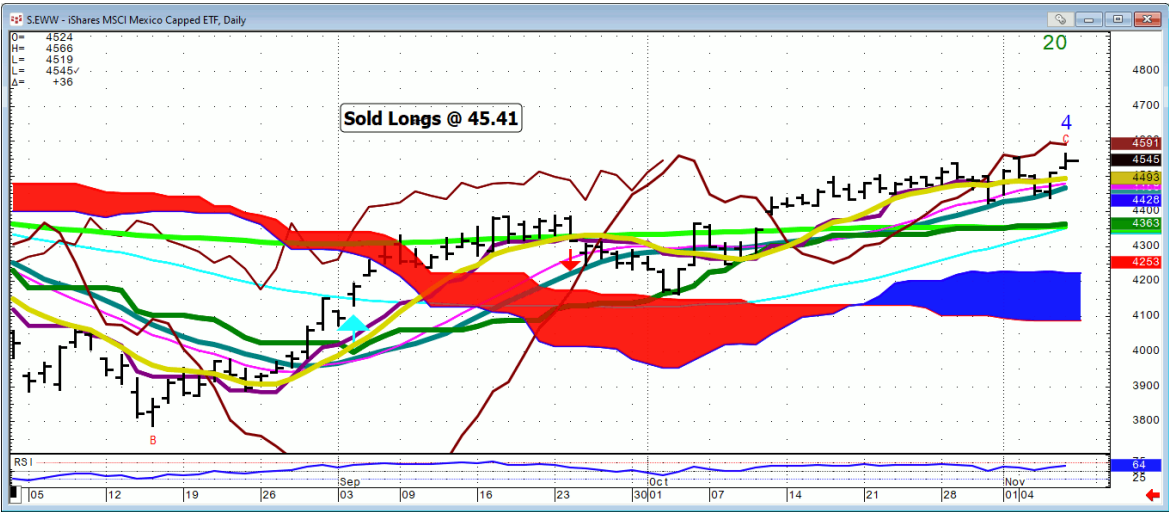
Spoo...25X3



Nasd/Bond Pit Qtrly



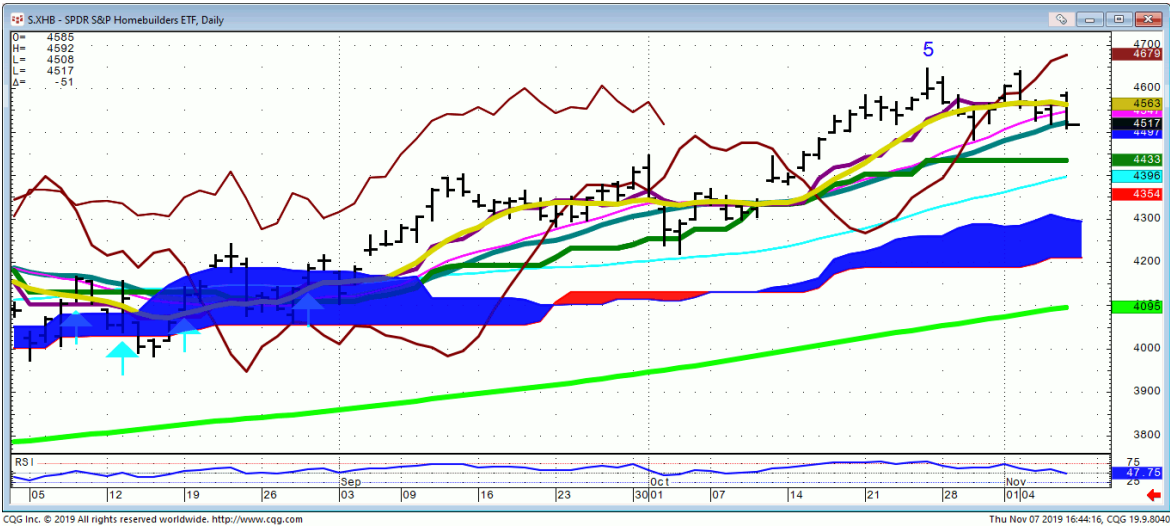
EWW...Daily



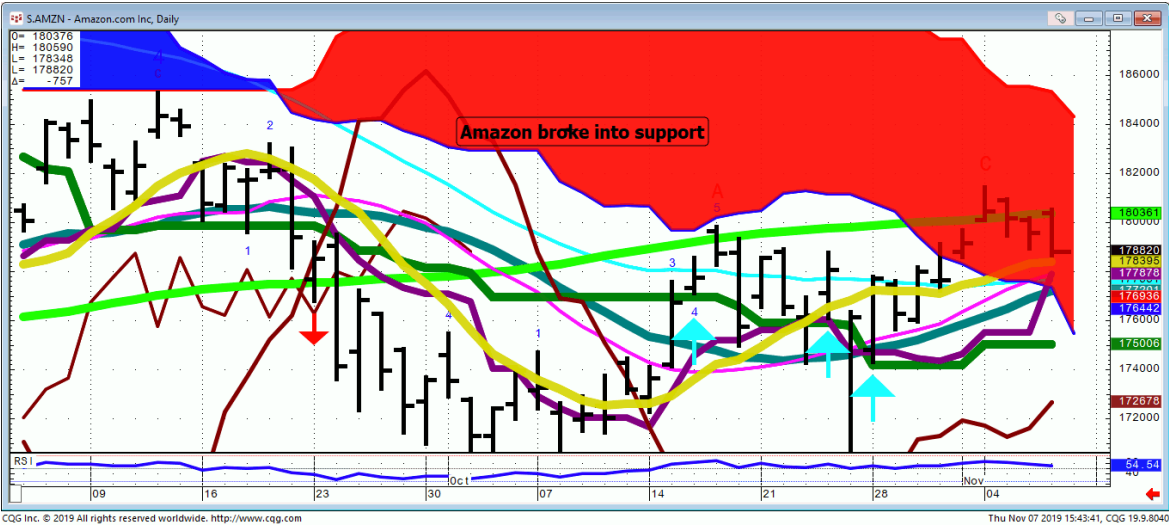
JPM..



**XHB.. did not like the worldwide Bond selloff**



AMZN...



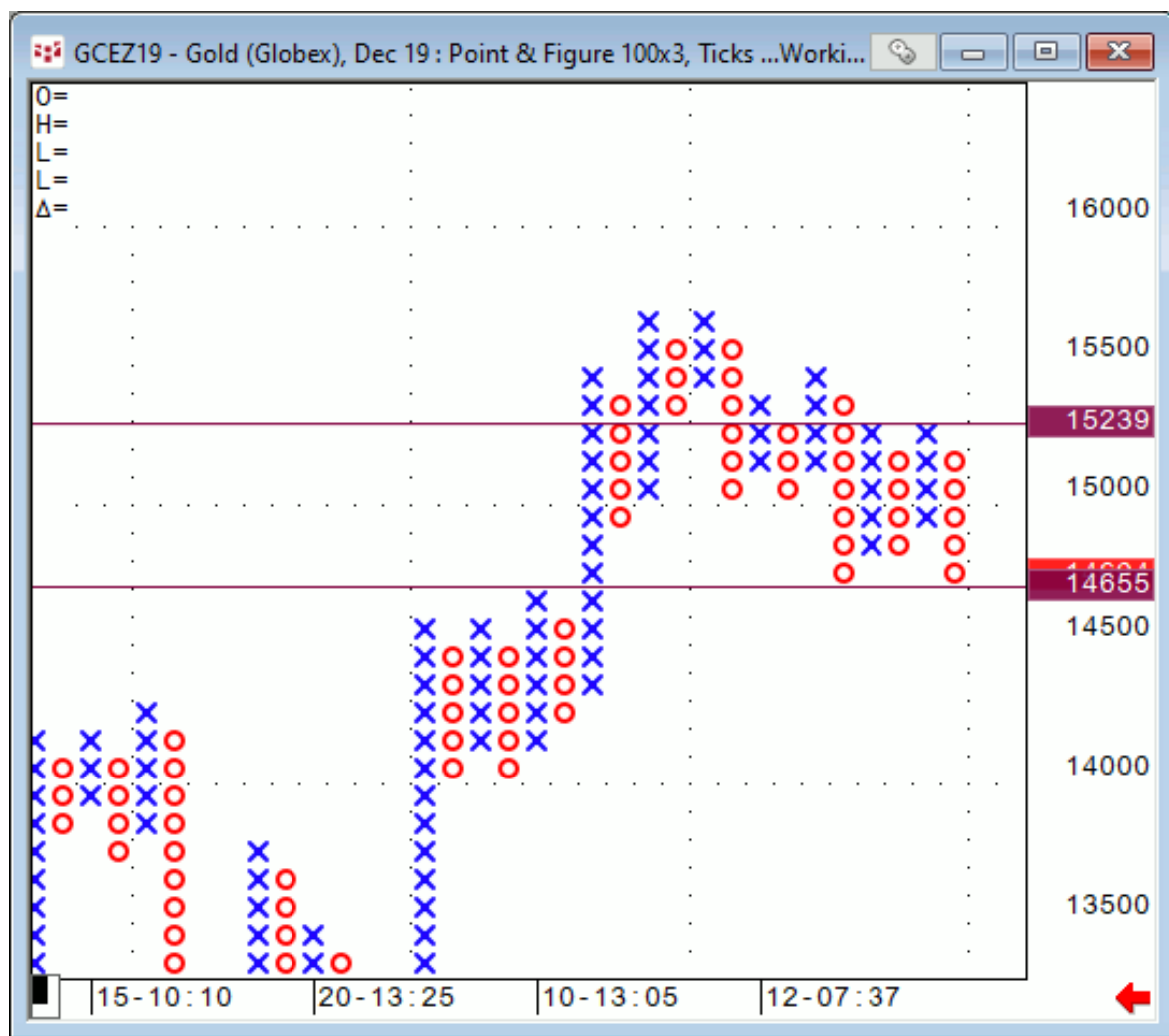
***Bond...***



***FX***

## Commodities...

**Gold 100X3** double bottomed for now. Will monitor for a more severe selloff



**General Comments or Valuable Insight**

**Yra stopped in.**

<https://zoom.us/recording/share/h0NOOrhN4rVuPAszRXe9ERYOFFa8bBMf7bJIPbAc5P-wlumekTziMw>

**We welcome all questions. Just send them in and we'll get to them.**

**Spoo & Nasd gave a gap fill retrace for the plungers among us.**

**Spoo would need to see a 3071 print for any back and fill.**

**I'm not looking for it, but never say never.**

**Manage your risk and trade the setups given.**

**Sold EWW ...my initial reaction after the fact is sellers' remorse. Tomorrow will tell.**

**Judd's room is open.  
Invites are sent before NYSE Opens.**

**I've started screen sharing just after 7 A.M.  
CDT. I start speaking @ 8:20.**

**Please check your spam folder or your Google  
calendar if you don't see an invite.**

**Not there? Just let me know in the A.M. to get  
one when the room opens.**

**We begin answering questions around 8:20 CDT.**

**I will review any instrument available on my  
platform and tell you what if anything I see**

<http://www.whitewavetradingstrategies.com/glossary/>

**WhiteWave Trading Strategies  
Independent Research from the Pro's Pro**

**We Trade to Make Money  
[www.whitewavetradingstrategies.com](http://www.whitewavetradingstrategies.com).**

**[info@whitewavetradingstrategies.com](mailto:info@whitewavetradingstrategies.com)**

**Skype: juddhirsch**

**Twitter: whitewavetrader**

**312-543-4070**

## Chart Lines....Ichimoku

**Green Bright**...200 DMA **Aqua** 50 DMA **Blue Green** 21 DMA **Fuchsia** 18 DMA **Yellow** 10 SMA

These are simple moving averages. When you roll a chart to weekly or monthly the averages are simple weekly or monthly mvg averages.

The **reddish purple** is an embedded Imoku line which acts as momentum.

The **leaf green** is an embedded Imoku line which calculates 50% retraces.

**Brown line** is where the Macd with histogram crosses. The line shows the visual on every time frame so you don't have to guess looking at the price of the cross in a line study.

