



Daily Market Intelligence

Bullish DJI

Bullish Spu's

Bullish Nasd 100

Neutral Nikkei

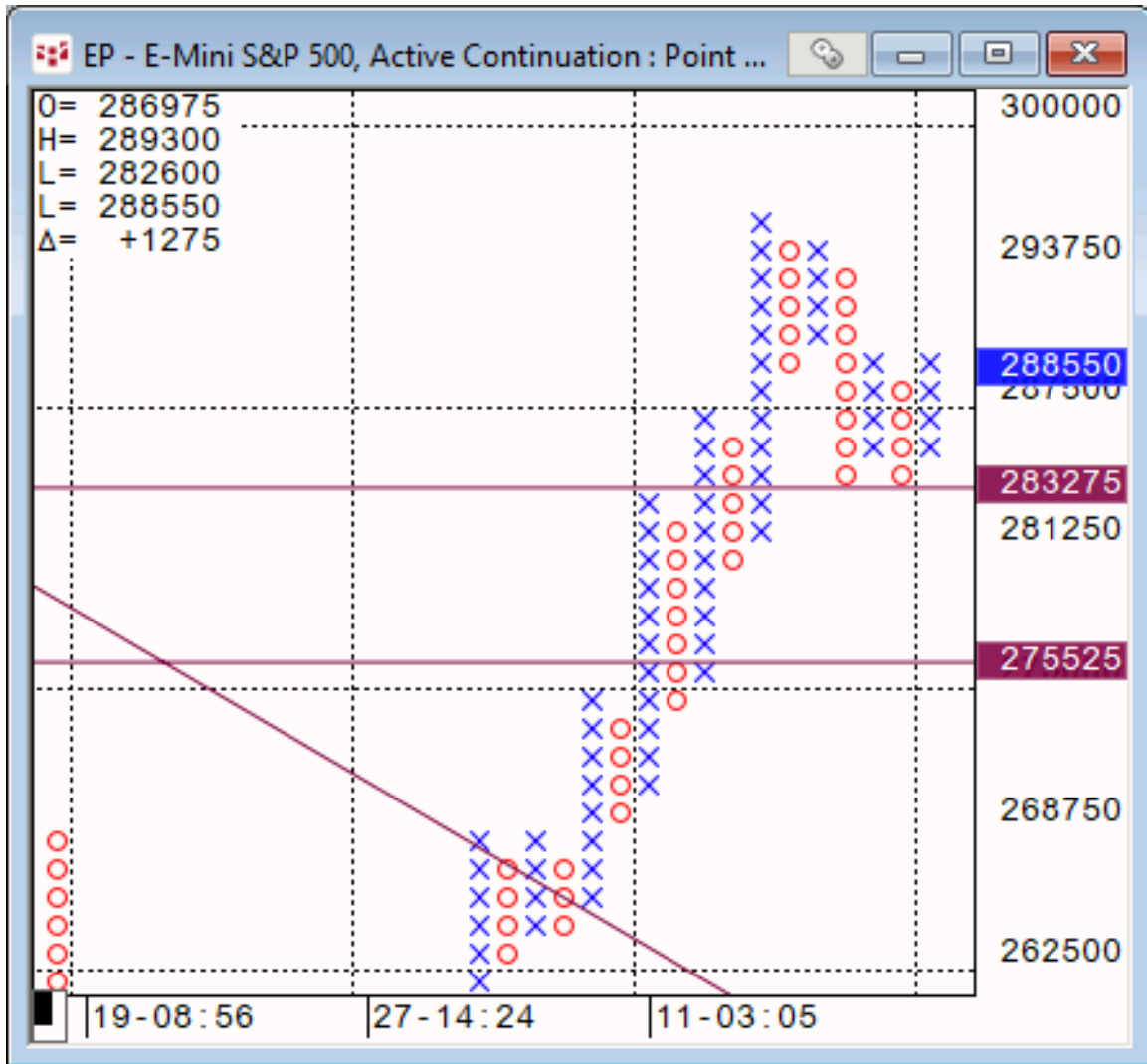
Neutral DAX

Neutral U.S. Bond Market

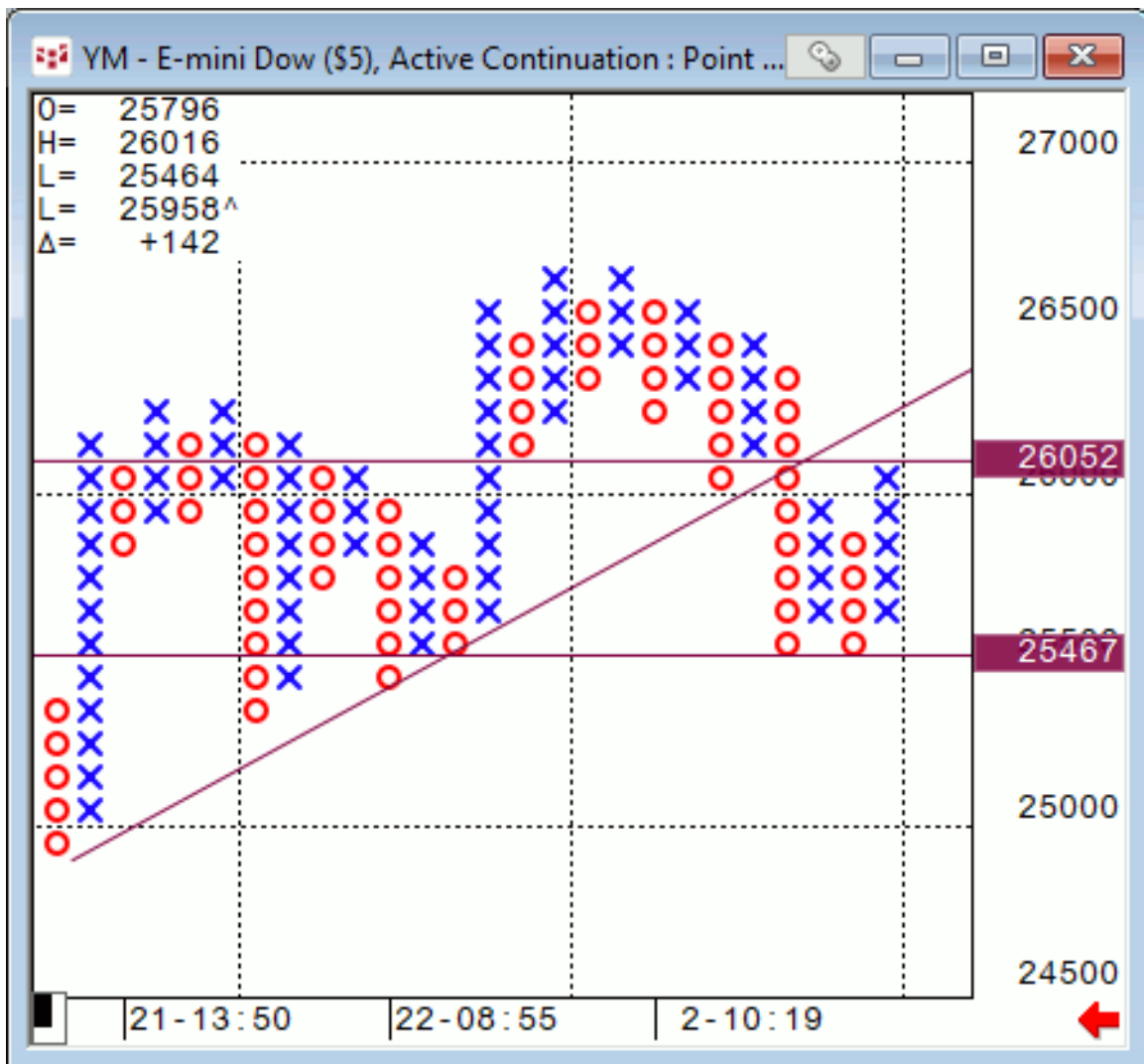
Risk Spreads are Bullish Nasd, Spu & DJI

Stocks

Spo...50X3...



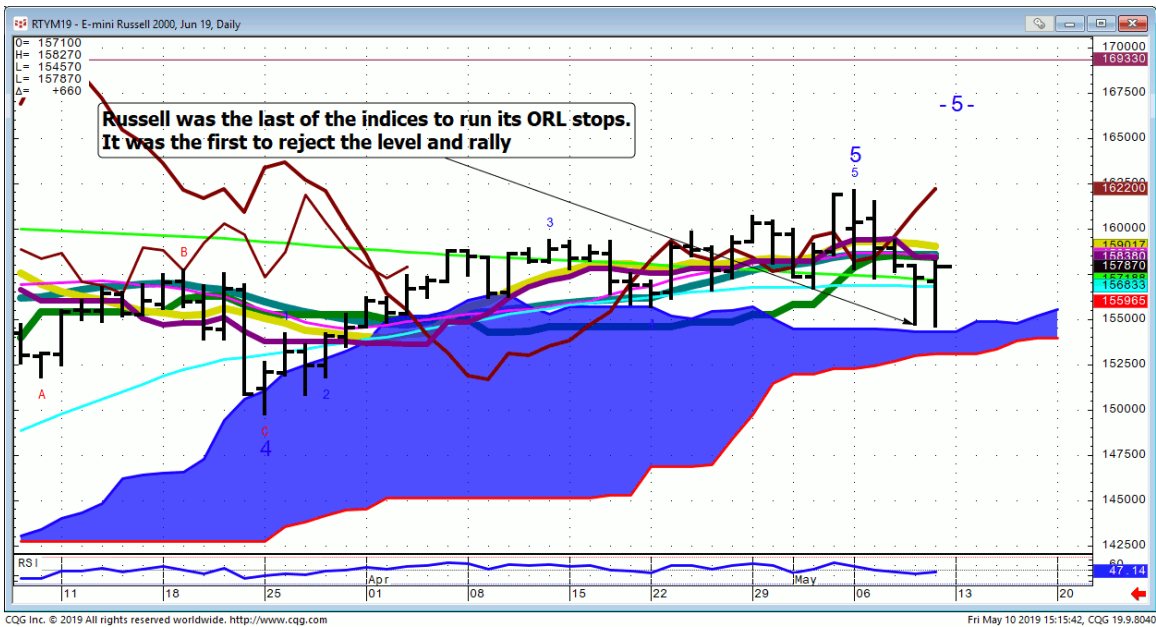
Mini-Dow...100X3



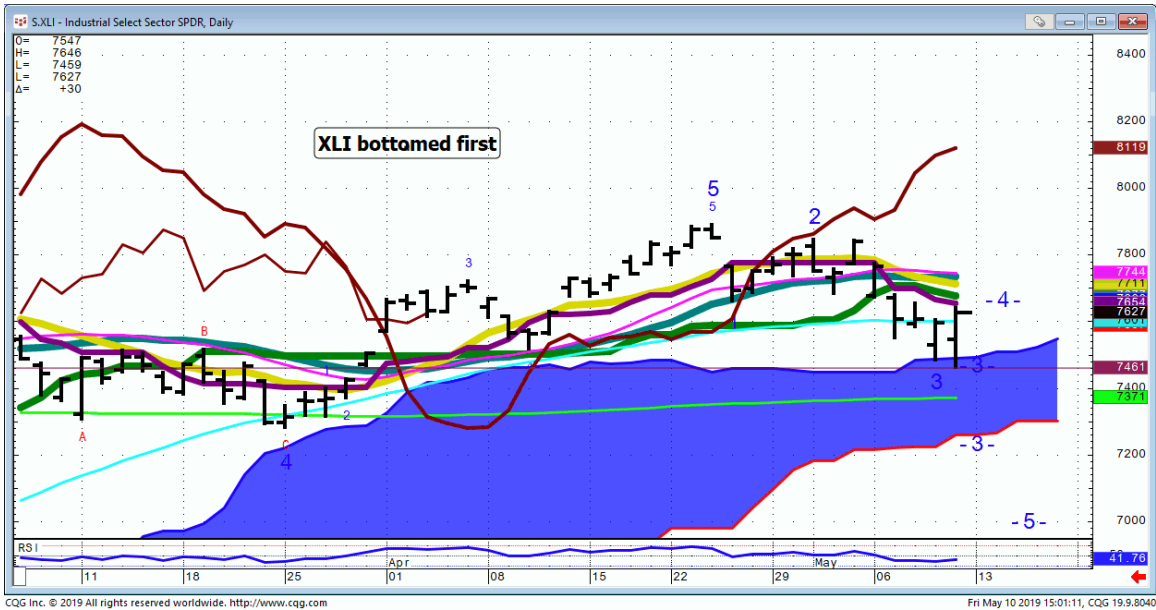
Nasd 100...went right to resistance and backed off late day



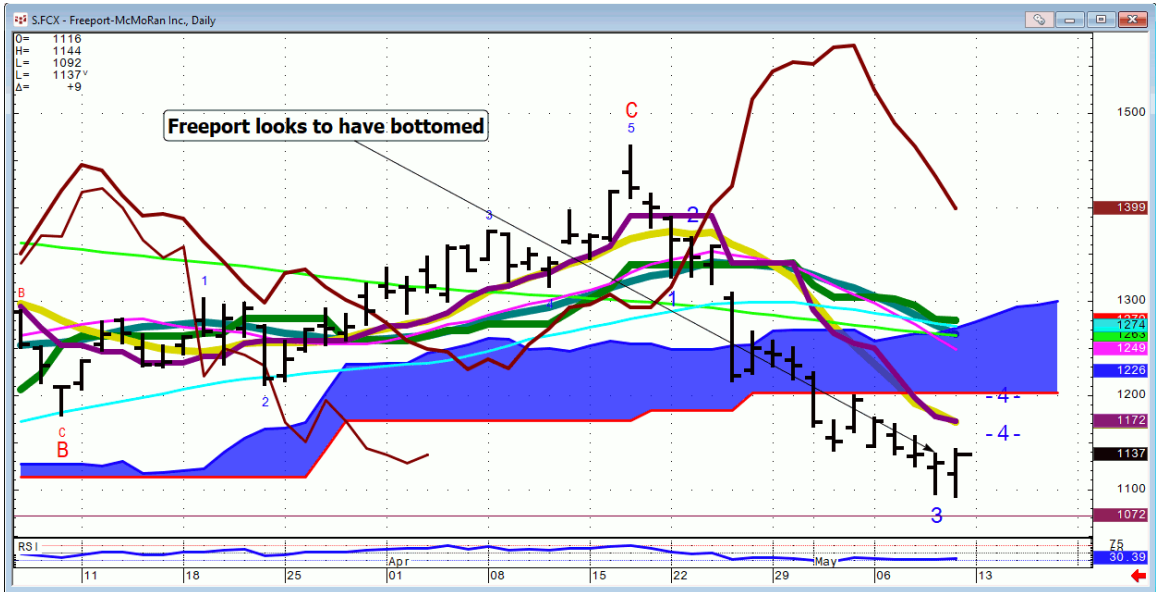
Russell...



XLI...



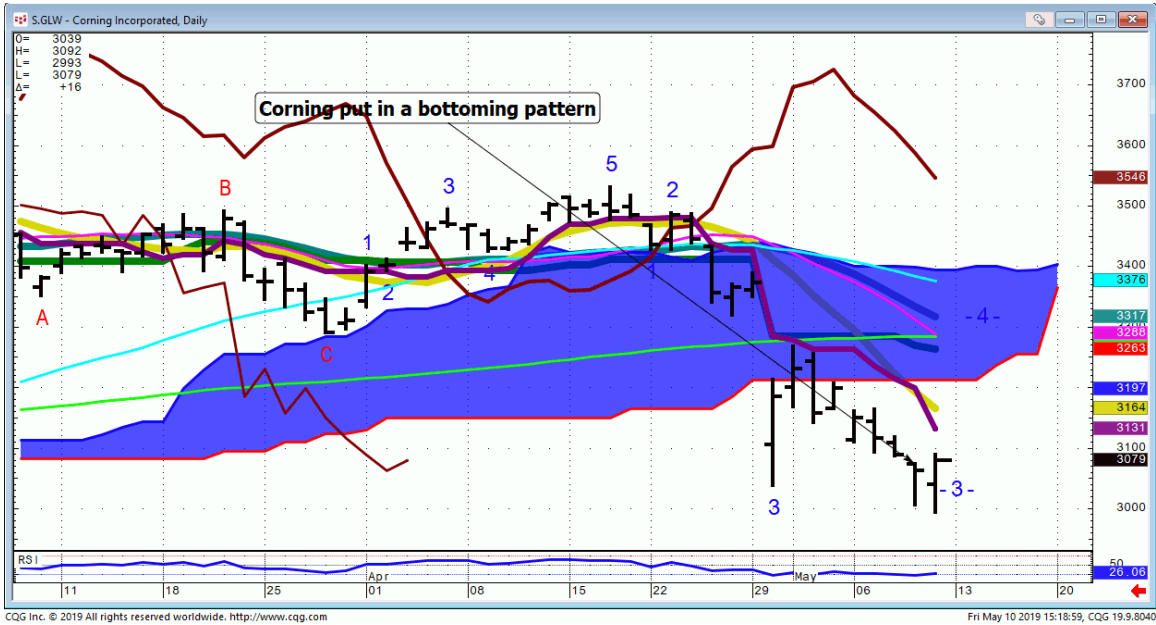
FCX...



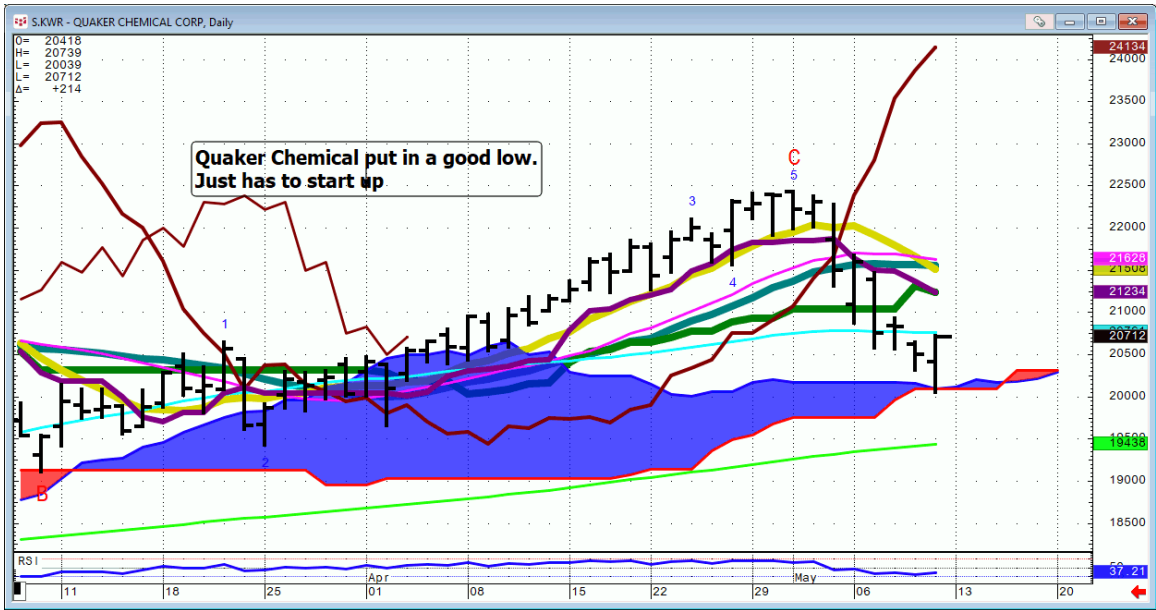
HON...



GLW...



KWR...



Bonds...

FX

Commodities

General Comments or Valuable Insight

Another big two way trade day with the selling ebbing into London's close @ 10:10 CDT.

The Late London matches; 200 DMA in GOOGL and AAPL hitting as Spoo/Bonds filled its qtrly gap.

Yesterday's Highlighted names shined today; CME, GD, NOC, FLR.

Today was all about beaten up Industrial and material names being scooped up.

It was yet another day of big call buyers followed by positive tweets.

I'm Shocked! Shocked to find gambling going on in this café.

Indices saw some squaring up @ the NYSE close as many participants could do without the exposure to Trump Tweets over the weekend

Room trades;

FLR...pushed the trade and bought AAPL.... having issues with the margin police.

Bought and Sold APPL shares for a 2-dollar profit.

Positions;

Long PRED

Long HON June 21 170 Calls @ 4.03

**Judd's room is open.
Invites are sent before NYSE Opens.**

**I've started screen sharing just after 7 A.M.
CDT. I start speaking @ 8:20.**

**Please check your spam folder or your Google
calendar if you don't see an invite.**

**Not there? Just let me know in the A.M. to get
one when the room opens.**

**We begin answering questions around 8:20
CDT.**

**I will review any instrument available on my
platform and tell you what if anything I see**

<http://www.whitewavetradingstrategies.com/glossary/>

WhiteWave Trading Strategies
Independent Research from the Pro's Pro
We Trade to Make Money
www.whitewavetradingstrategies.com.
info@whitewavetradingstrategies.com

Skype: juddhirsch
Twitter: whitewavetrader
312-543-4070

Chart Lines....Ichimoku

Green Bright...200 DMA **Aqua** 50 DMA **Blue Green** 21 DMA **Fuchsia** 18 DMA **Yellow** 10 SMA

These are simple moving averages. When you roll a chart to weekly or monthly the averages are simple weekly or monthly mvg averages.

The **reddish purple** is an embedded Imoku line which acts as momentum.

The **leaf green** is an embedded Imoku line which calculates 50% retraces.

Brown line is where the Macd with histogram crosses. The line shows the visual on every time frame so you don't have to guess looking at the price of the cross in a line study.

