



Daily Market Intelligence

Neutral DJI

Neutral Spu's

Neutral Nasd 100

Neutral Nikkei

Neutral DAX

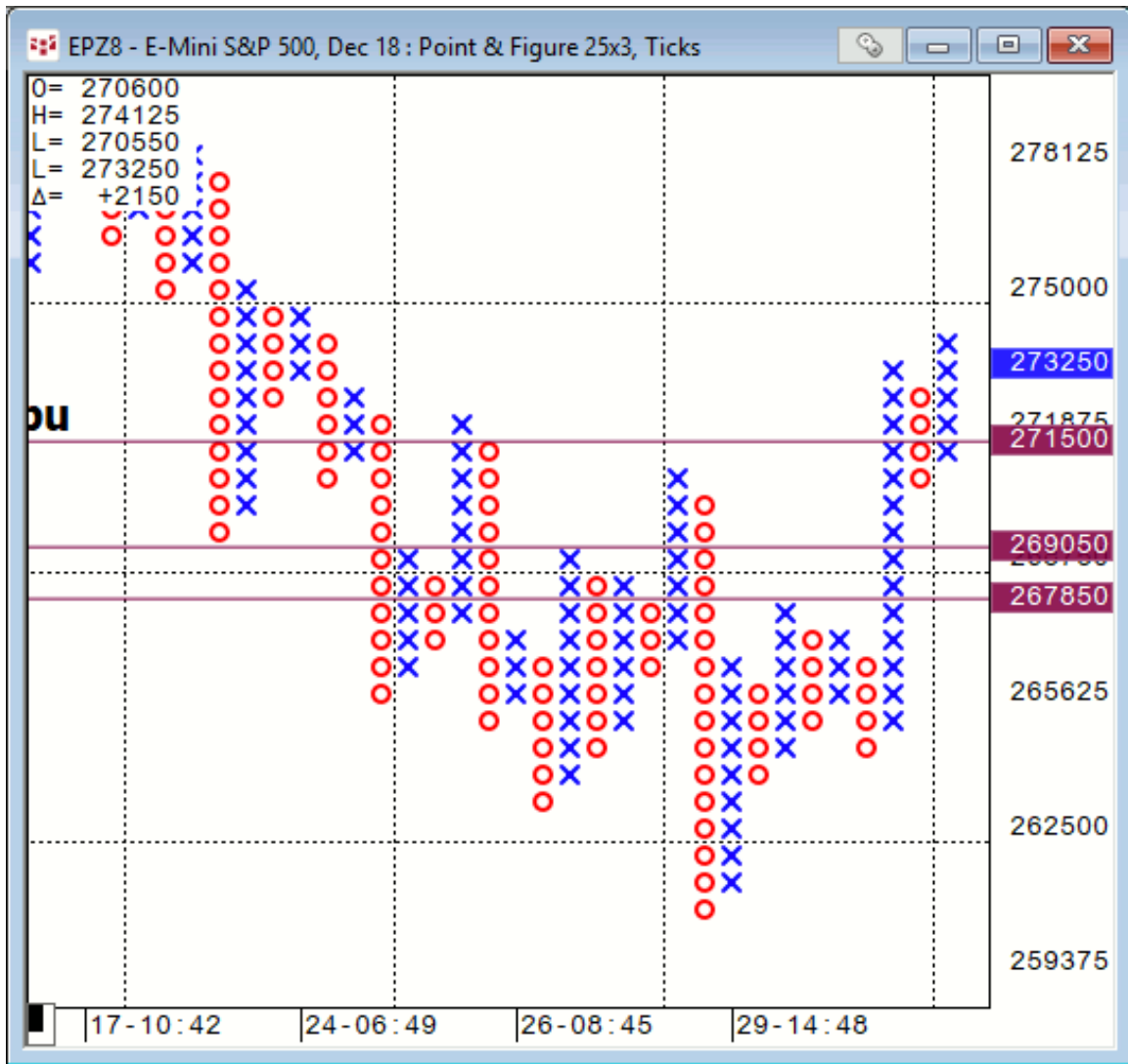
Neutral U.S. Bond Market

Risk Spreads are Neutral Nasd, Spu & DJI

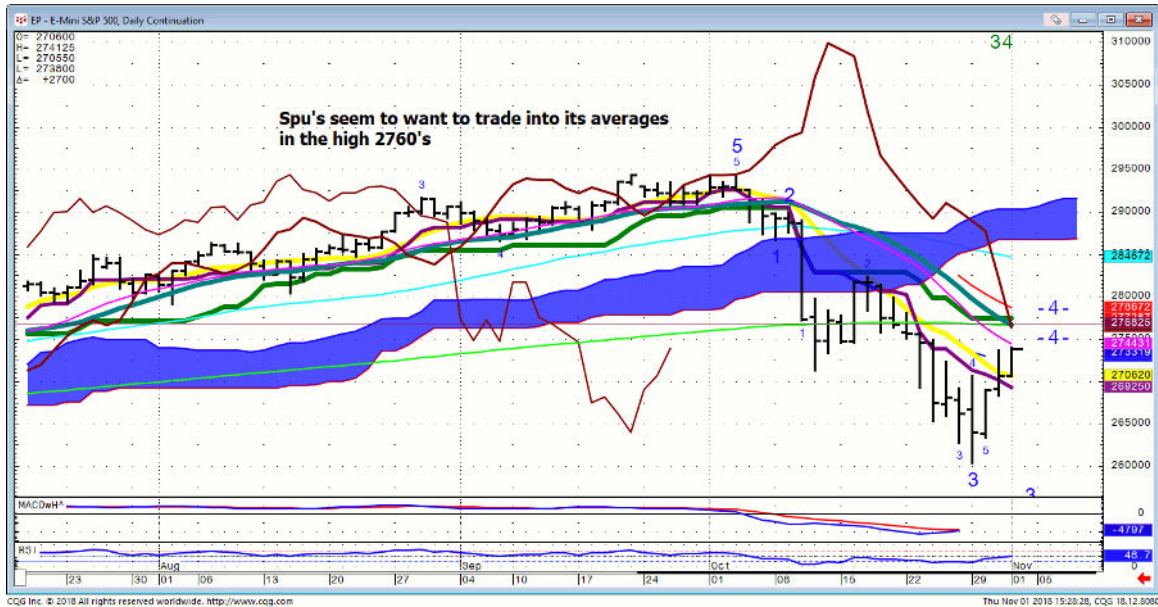
**Presently not in the camp of seeing new Index highs
this year.**

Stocks

Spu...25X3 this picture shows 2715 is initial support.



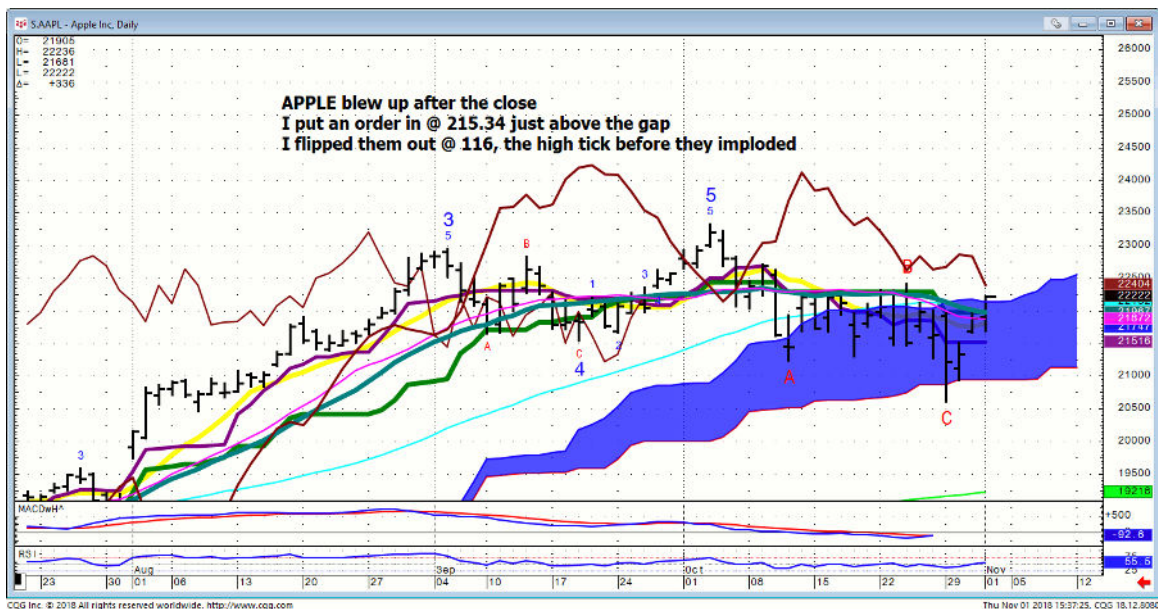
Spu...



AMZN...hit 200 DMA resistance



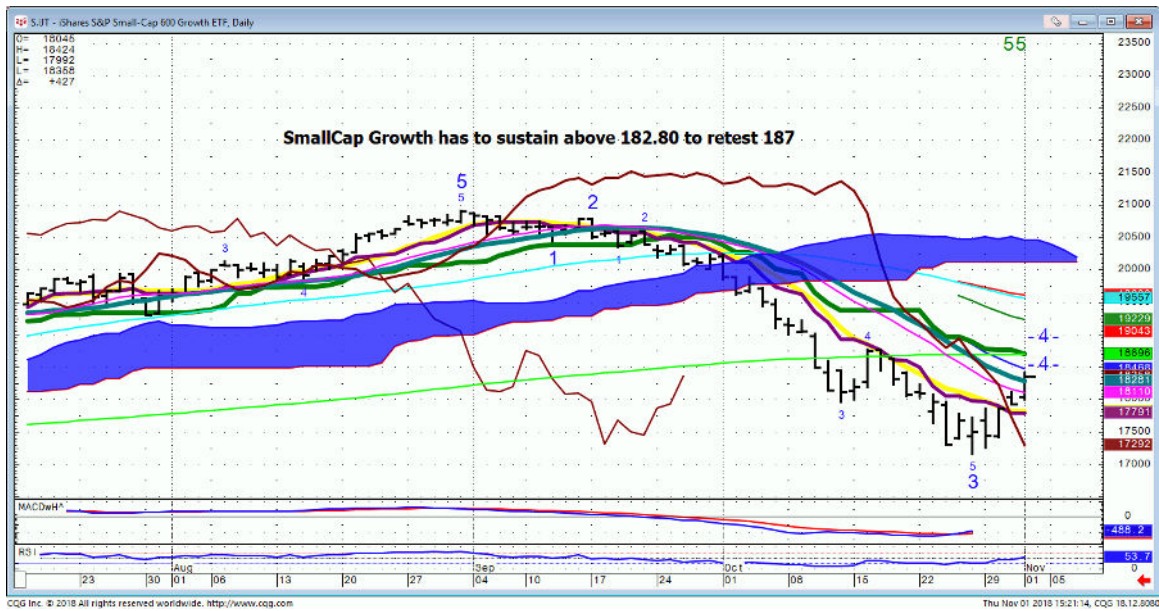
AAPL...Daily..Oled is off \$25 dollars I turned off the bloviators (the buy Mortimers!). I can await the morning. The price action is not good. I'll try buying @ 192-7 gap area.



XLK...hit 200DMA resistance



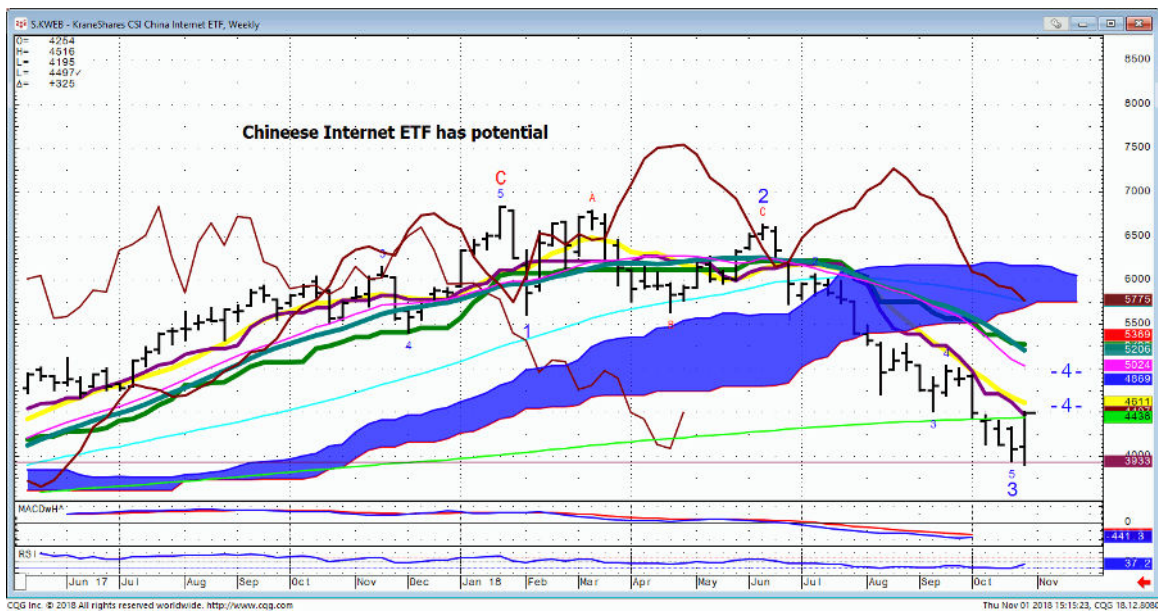
IJT...



XLI...



KWEB...It's currently into 200 week resistance. Has to hold and go in the A.M.



Bonds

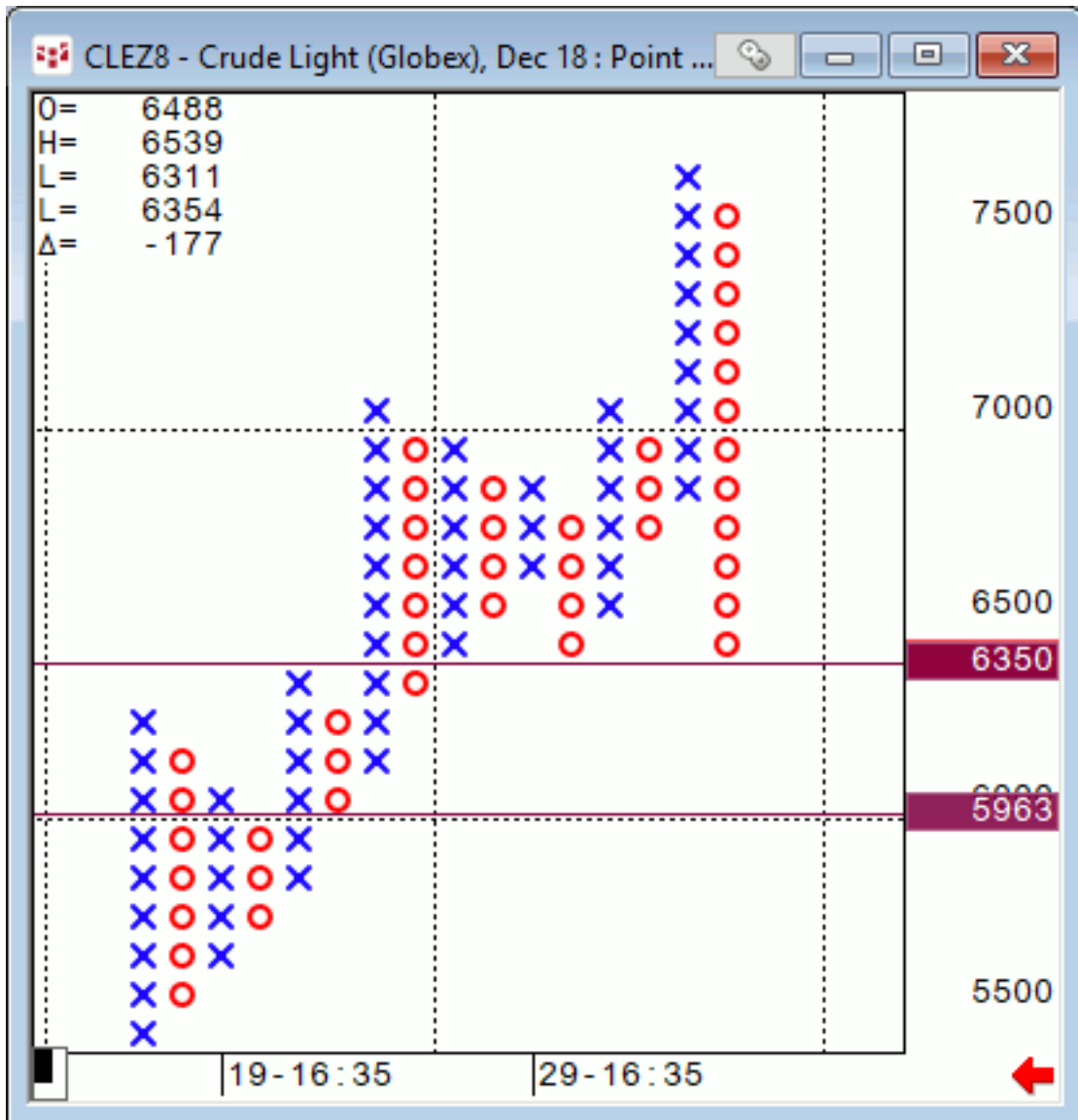
FX

Commodities

Oil...Daily. Manage your risk.



Oil...100X3..it takes over \$3 to turn. This has the potential to dump into \$60.



General Comments or Valuable Insight

There were many Etf's and names that rallied to weekly resistance today.

Fearless leader set off the China names with a Tweet. They have to prove themselves by holding and rallying tomorrow.

They too have rallied to weekly closing resistance.

As of now the Nasd 100 & AMZN highs matching their respective 200 DMA's puts me in neutral.

I've looked at the Oil and respective surrogates. They all show ORL months with downside follow through.

I think the Fundamental rap that Iran sanctions will buoy price is far fetched since that news has been in the market for a while.

Secondly the Saudis owe Trump. They will keep pumping.

A small bounce is possible given the shorter time frame Charts.

Not handicapping payrolls tomorrow.

If Yra writes a piece tonight best pay attention@

Room trades; For the Hamster in all of us.

Long CNX Dec 16 Call @ .92

Sold CNX Dec 16 Call @ .99 .84 .76 -\$88

**Pitched this name when it failed to hold its 200 DMA
This trade really started 2 days ago.**

I was very late to this party.

Long AMD Dec 19 Call @ 1.78

Sold AMD Dec 16 Call @ 2.46

Long VALE Dec 16 Call @ .71

Sold VALE Dec 16 Call @ .74

**Most bought the stock in AMD & VALE.
Vale was the surrogate for Copper.**

**Judd's room is open.
Invites are sent before NYSE Opens.**

Please check your spam folder or your Google calendar if you don't see an invite.

Not there? Just let me know in the A.M. to get one when the room opens.

We begin answering questions around 8:15 CDT.

I will review any instrument available on my platform and tell you what if anything I see

<http://www.whitewavetradingstrategies.com/glossary/>

**WhiteWave Trading Strategies
Independent Research from the Pro's Pro**

**We Trade to Make Money
www.whitewavetradingstrategies.com.
info@whitewavetradingstrategies.com**

**Skype: juddhirsch
Twitter: whitewavetrader
312-543-4070**

Chart Lines....Ichimoku

Green Bright...200 DMA **Aqua** 50 DMA **Blue Green** 21 DMA **Fuchsia** 18 DMA **Yellow** 10 SMA

These are simple moving averages. When you roll a chart to weekly or monthly the averages are simple weekly or monthly mvg averages.

The **reddish purple** is an embedded Imoku line which acts as momentum.

The **leaf green** is an embedded Imoku line which calculates 50% retraces.

Brown line is where the Macd with histogram crosses. The line shows the visual on every time frame so you don't have to guess looking at the price of the cross in a line study.

