



Daily Market Intelligence

Bullish DJI

Bullish Spu's

Bullish Nasd 100

Bullish DAX & Nikkei

Negative Bond Markets sell big rallies

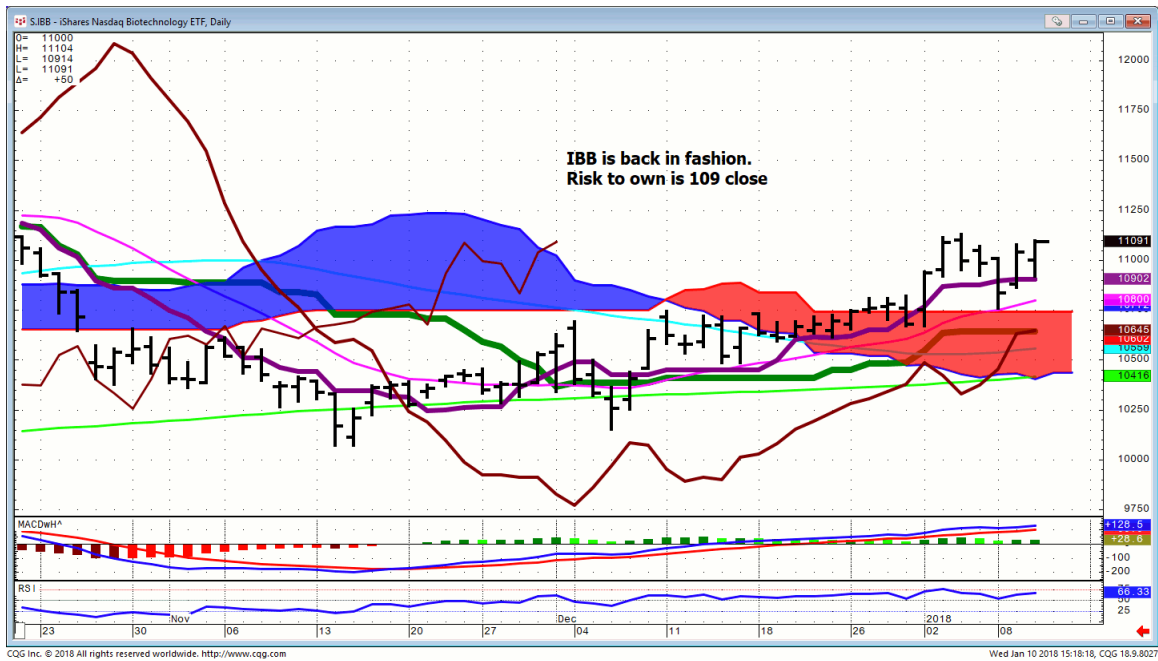
Risk Spreads are Bullish DJI, Nasd & SPU

Long-term Bullish Indices

Buy hard breaks in names or sectors of interest.

Stocks

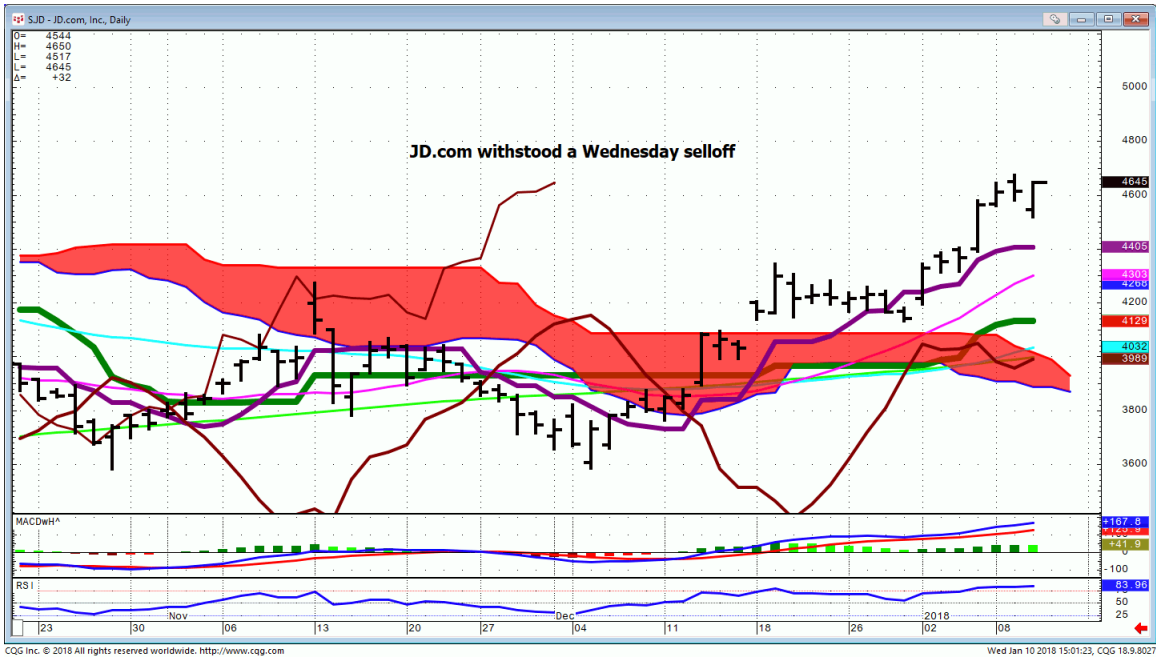
IBB...



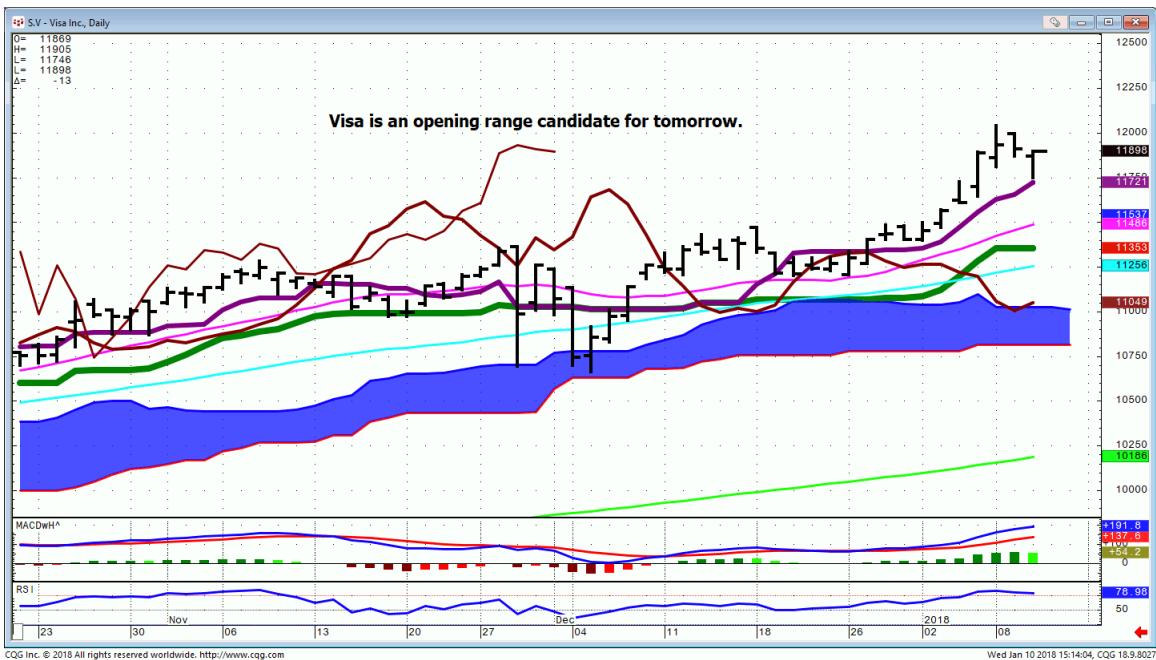
NVDA...



JD....



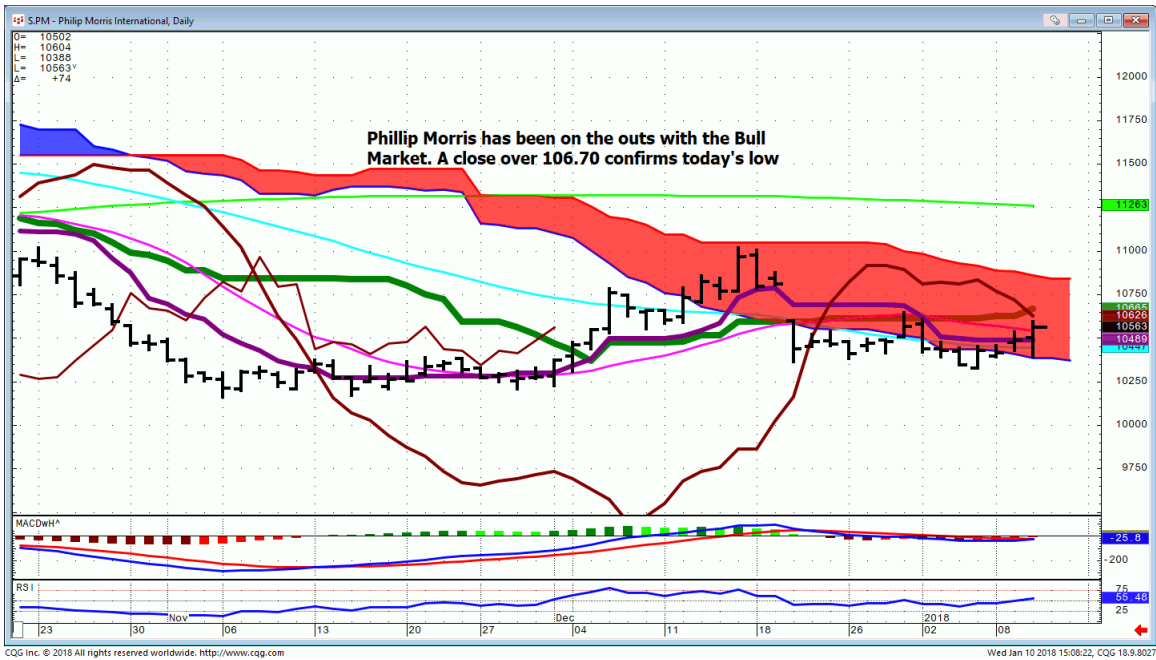
V...



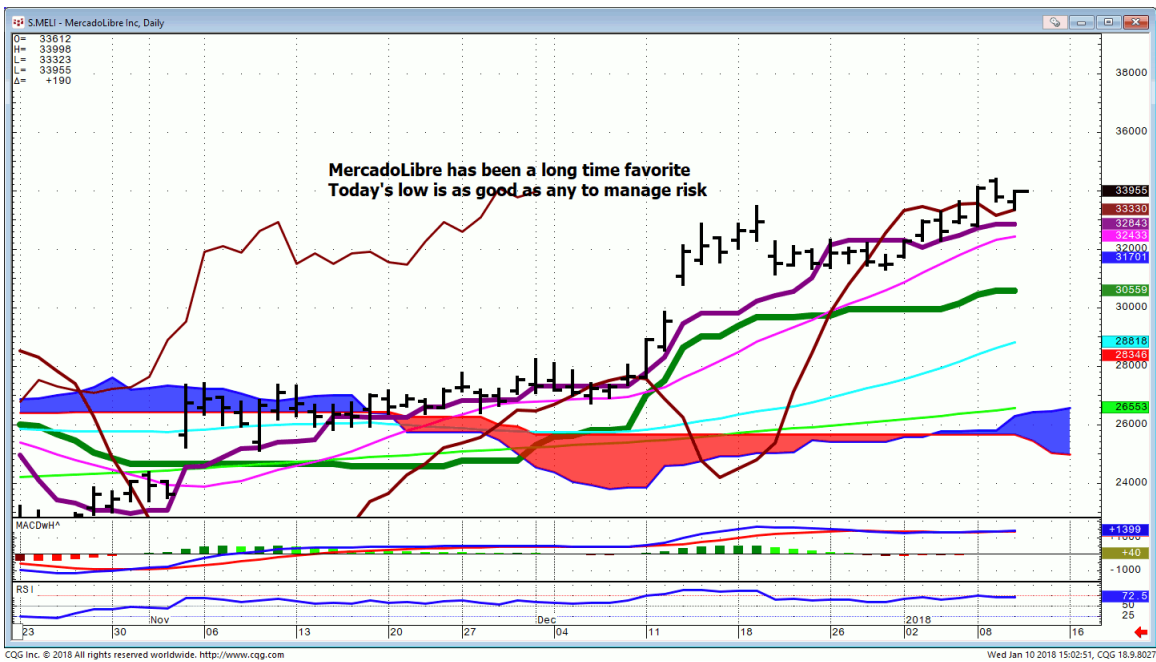
WLTW...



PM...



MELI...

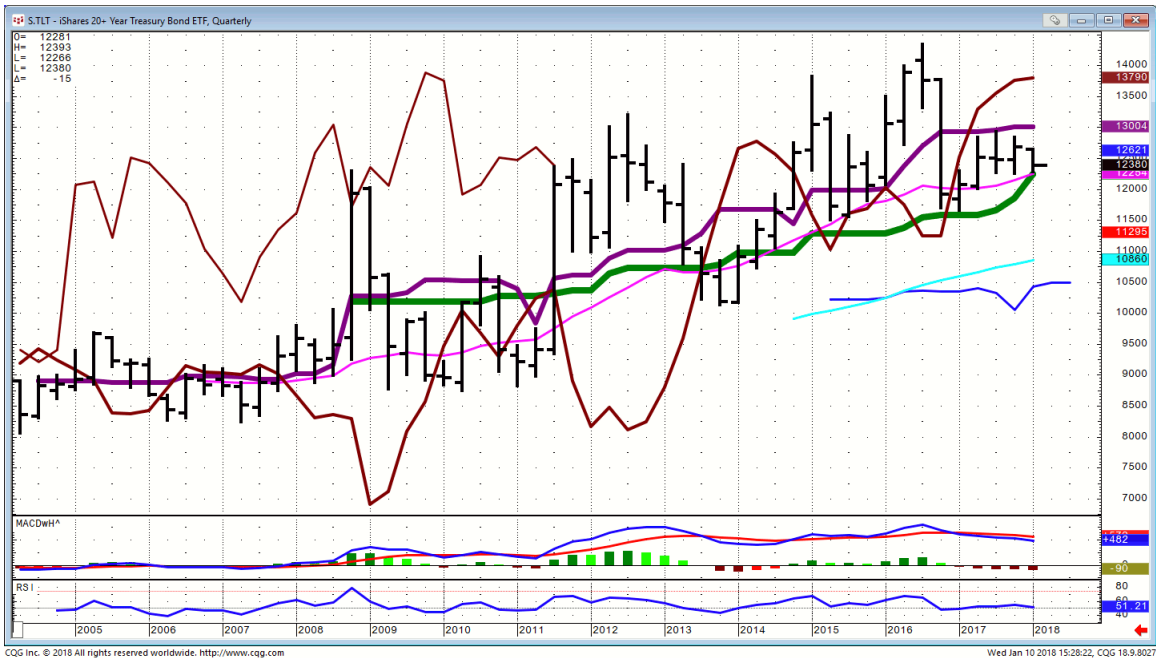


Bonds

30 yr. Bonds...Pit Daily Continuation



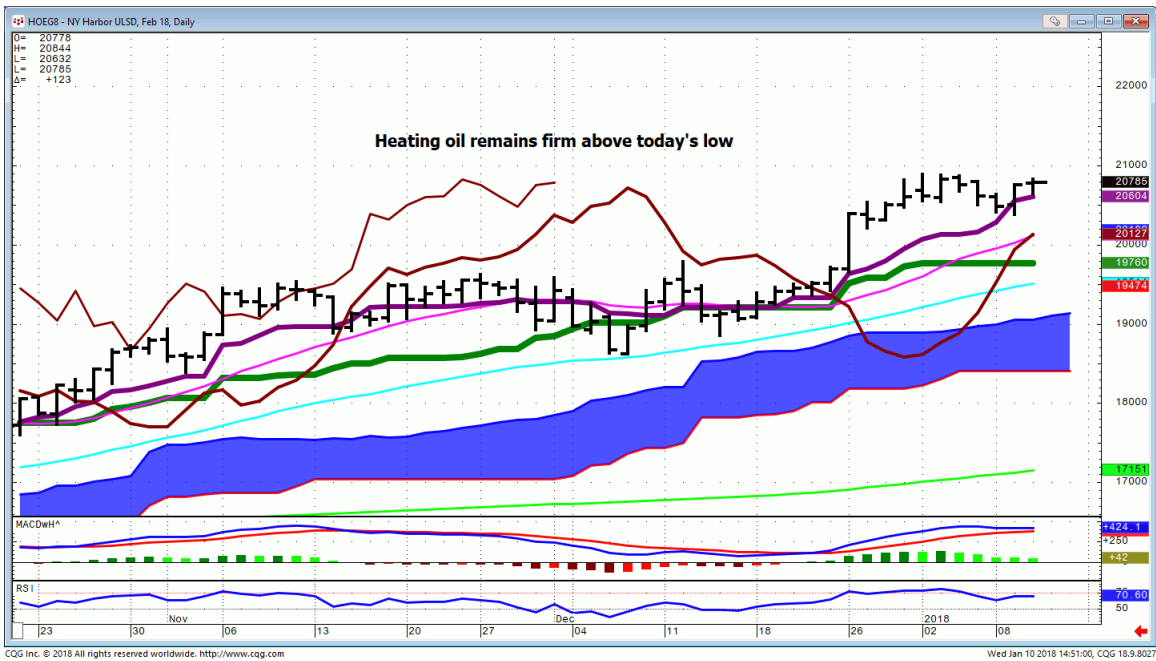
TLT...Qtrly shows closes are needed below today's low for the floodgates to open



FX

Commodities

Heating Oil...Now I'm stretching for something to write about.



General Comments or Valuable Insight

Nice Mid-week shuffle.

Was today the low for the rest of the week?

If the China Internet names rebound tonight into tomorrow morning, go with the flow.

The Nafta rumblings in the afternoon took the shine off many names, particularly the railroads.

The sell stops in pretty much all the major names will be at today's low.

I looked at the Gold and Gold/Currency crosses early and was not comfortable with comment.

Don't fail to inhale!

Getting set up to chart all those Pot stocks you've been requesting, many of which are traded on the Toronto Exchange.

Feel free to pass on the names of your favorites and I will endeavor to cover them.

<http://www.whitewavetradingstrategies.com/glossary/>

WhiteWave Trading Strategies
Independent Research from the Pro's Pro

We Trade to Make Money

www.whitewavetradingstrategies.com

info@whitewavetradingstrategies.com

Chart Lines....Ichimoku

Green Bright...200 DMA **Aqua** 50 DMA **Blue Green** 21 DMA **Fuchsia** 18 DMA

These are simple moving averages. When you roll a chart to weekly or monthly the averages are simple weekly or monthly mvg averages.

The **reddish purple** is an embedded Imoku line which acts as momentum.

The **leaf green** is an embedded Imoku line which calculates 50% retraces.

Brown line is where the Macd with histogram crosses. The line shows the visual on every time frame so you don't have to guess looking at the price of the cross in a line study.

