



## Daily Market Intelligence

**Bullish DJI**  
**Bullish Spu's**  
**Bullish Nasd 100..**  
**Neutral DAX & Nikkei.**  
**Neutral All Bond markets**

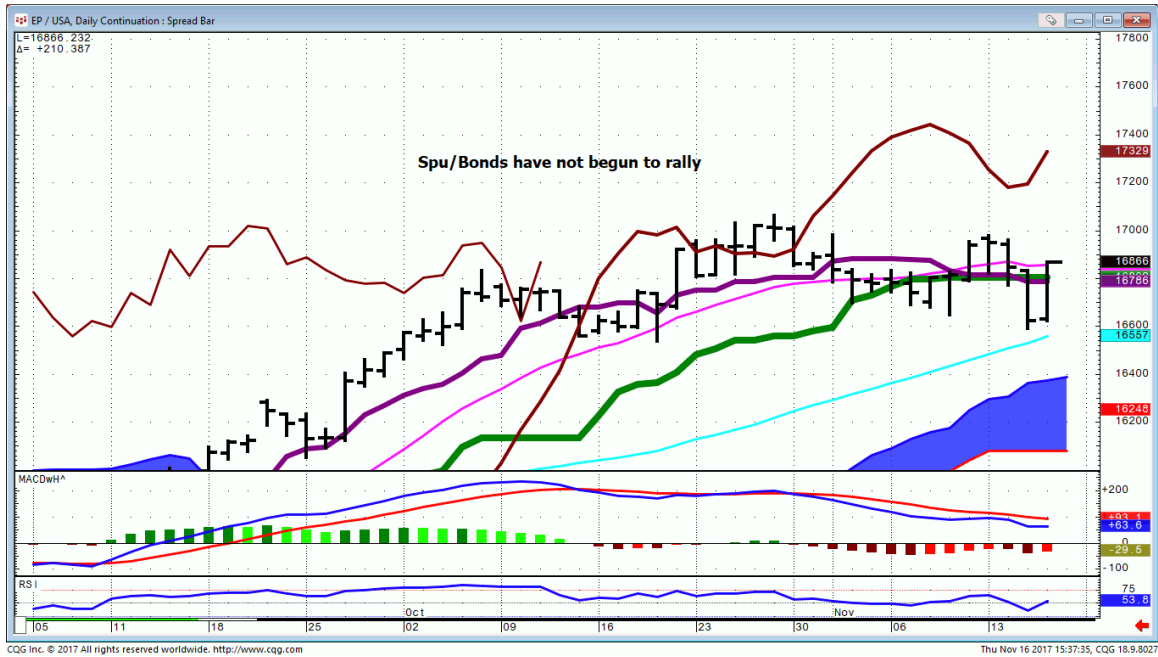
**Risk Spreads are Bullish DJI,SPU,NASD**

**Long-term Bullish Indices**

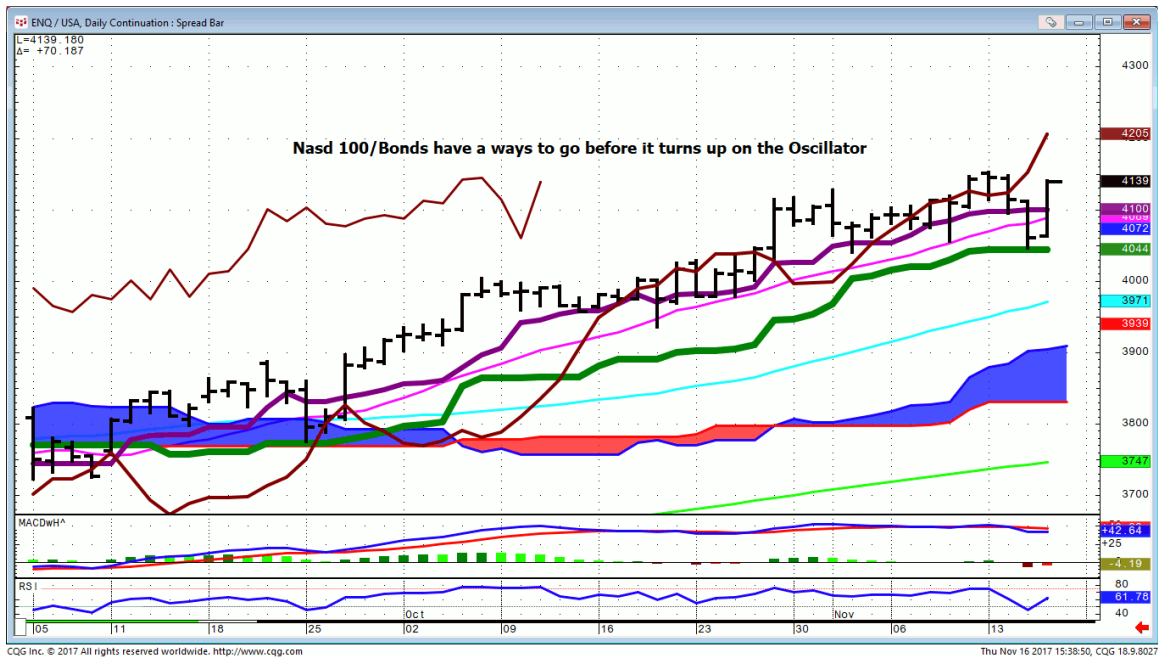
**Buy hard breaks in names or sectors of interest.**

# Stocks

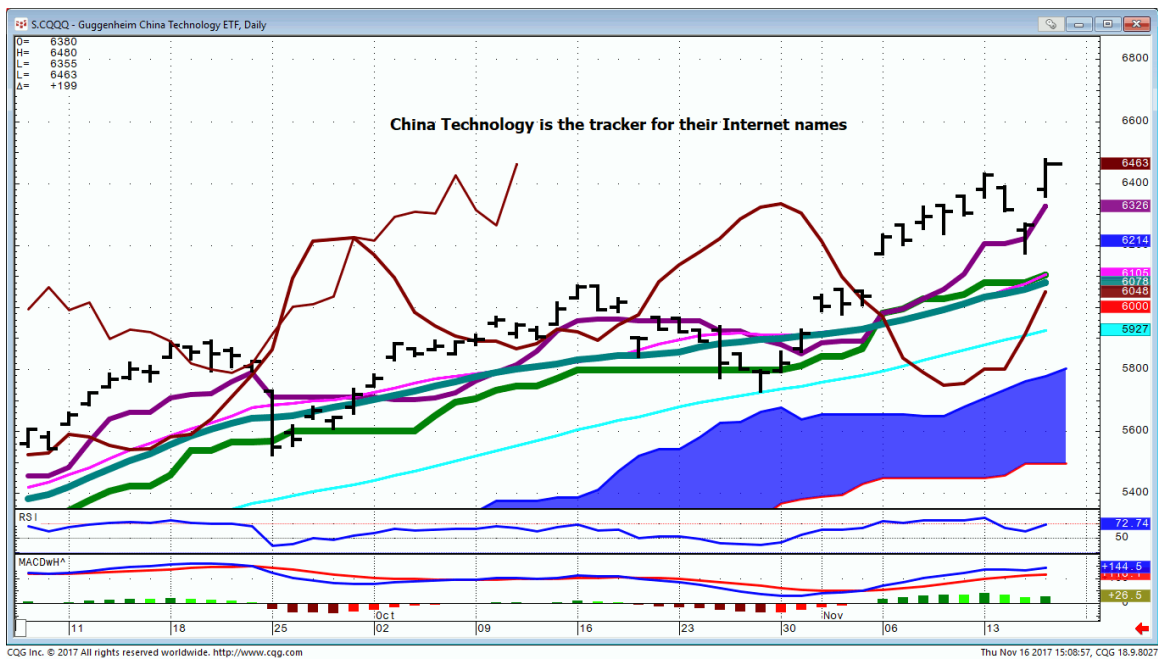
## Spu/Bonds...



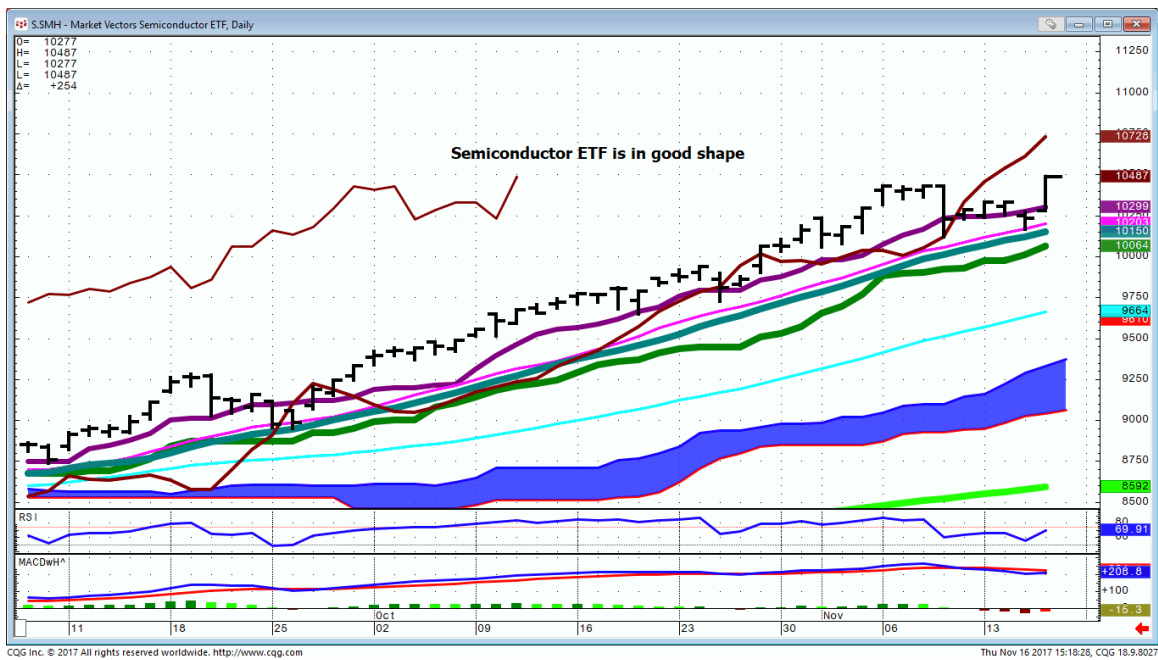
# Nasd 100/Bonds...



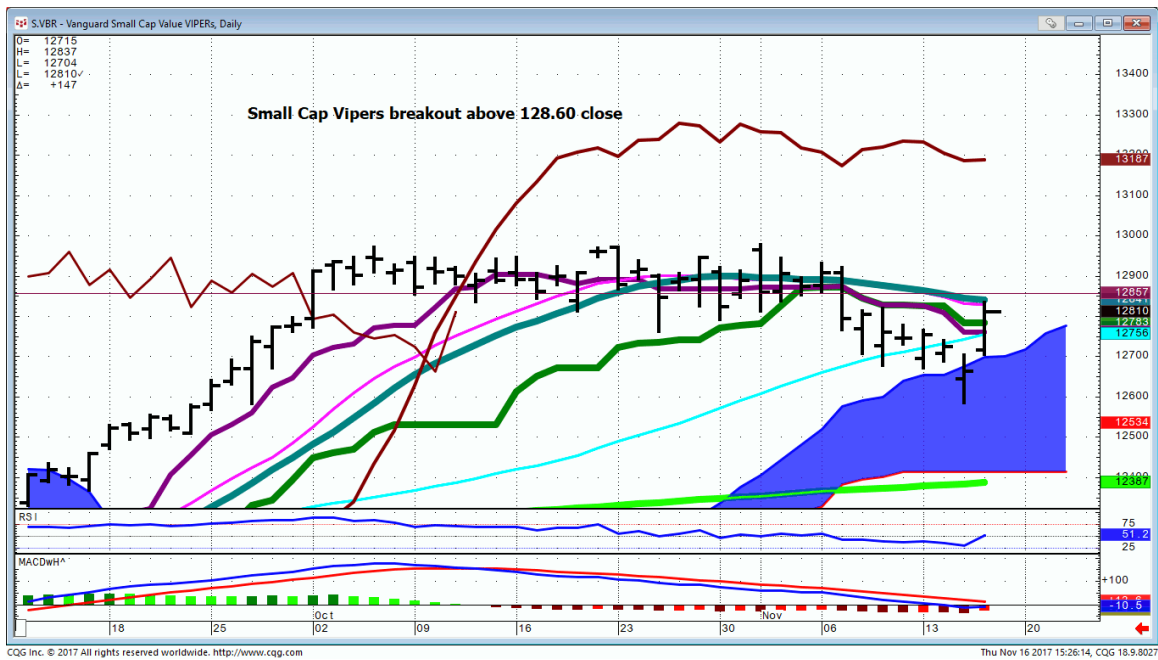
# CQQQ...



# SMH...



# VBR...



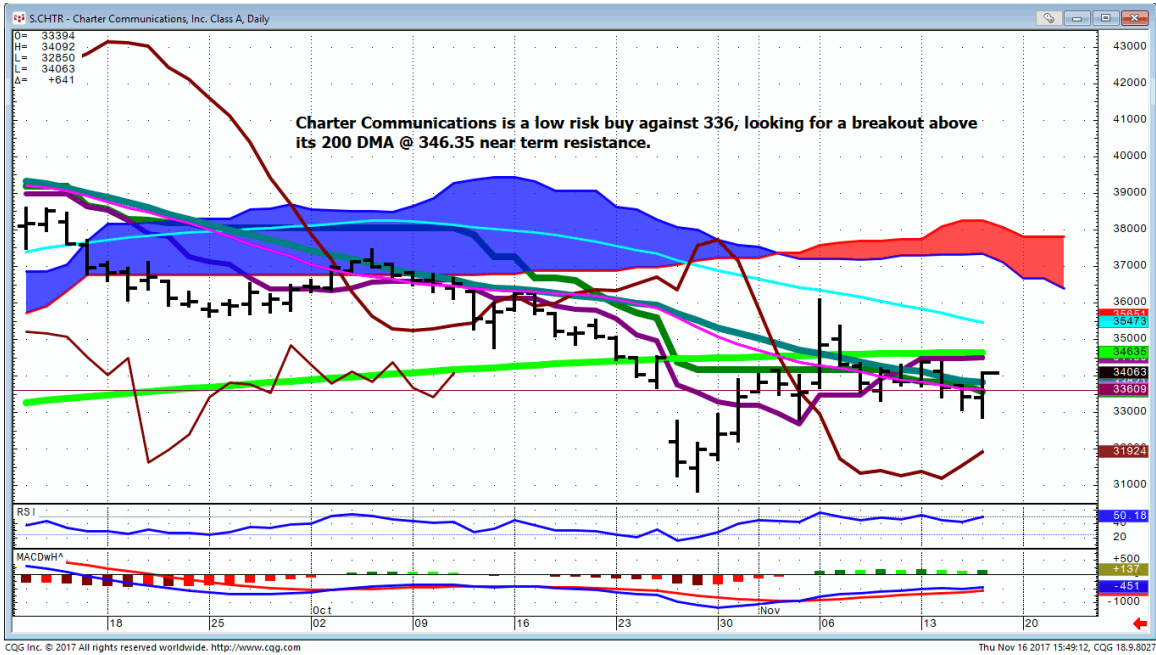
# FLR...



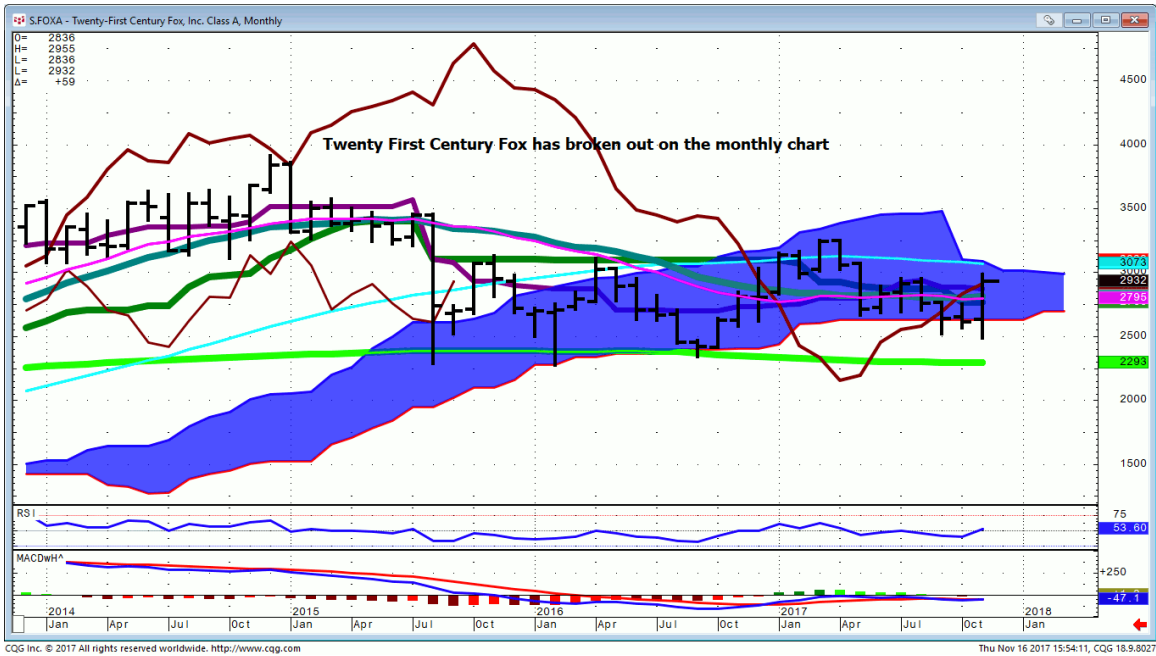
# BBBY...



# CHTR...



# FOXA...



## ***Bonds***

***FX***

## ***Commodities***

## **General Comments or Valuable Insight**

**What is the difference between A Saudi Prince and Putin?**

**When Putin takes your money in Russia you get a one-way ticket to a gulag as a door prize.**

**In Saudi Arabia you get 1000 count sheets at the Ritz before you're broke.**

**OSTK, GAP, ROST are more retailers up big after the close. Expect continued strength through the Holidays.**

**SPLK is up big after the close.**

**Today's Fan mail:**

nice mid week shuffle low.

worked like a charm.

thanks,

robert

**<http://www.whitewavetradingstrategies.com/glossary/>**

**WhiteWave Trading Strategies**  
**Independent Research from the Pro's Pro**

**We Trade to Make Money**

[www.whitewavetradingstrategies.com](http://www.whitewavetradingstrategies.com)

[info@whitewavetradingstrategies.com](mailto:info@whitewavetradingstrategies.com)

## Chart Lines....Ichimoku

**Green Bright**...200 DMA **Aqua** 50 DMA **Blue Green** 21 DMA **Fuchsia** 18 DMA

These are simple moving averages. When you roll a chart to weekly or monthly the averages are simple weekly or monthly mvg averages.

The **reddish purple** is an embedded Imoku line which acts as momentum.

The **leaf green** is an embedded Imoku line which calculates 50% retraces.

