



## Daily Market Intelligence

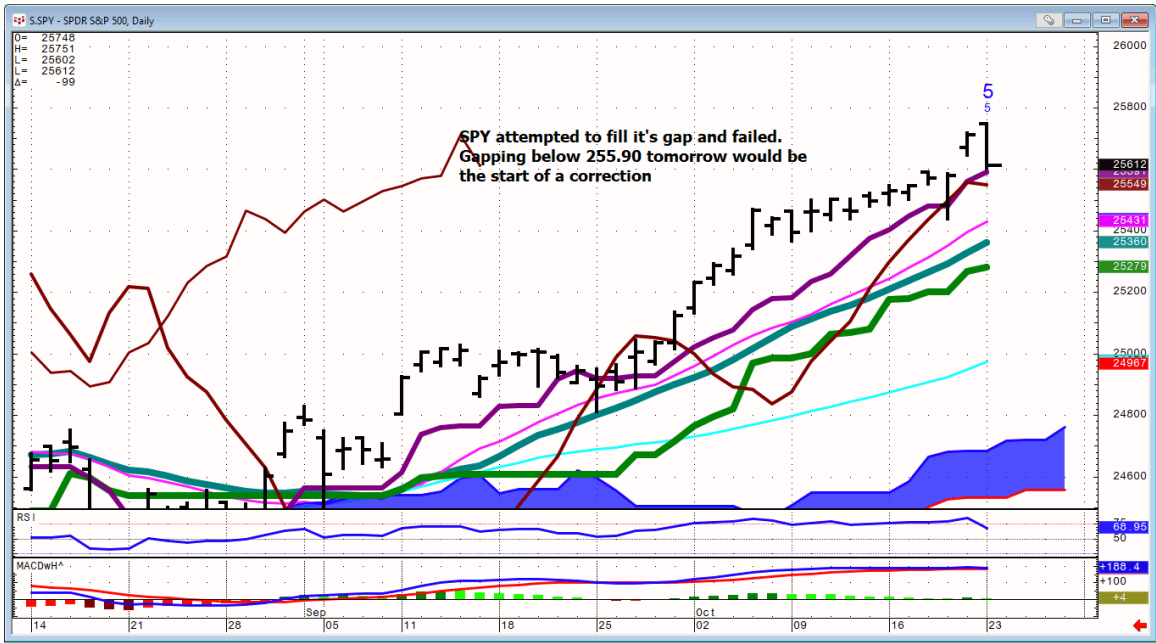
**Neutral DJI**  
**Neutral Spu's**  
**Neutral Nasd 100..**  
**Neutral DAX & Nikkei.**  
**Neutral All Bond markets**

**Risk Spreads are Bullish DJI,SPU,NASD**

**Long term Bullish Indices**  
**Looking for a better buying opportunity in October.**

# Stocks

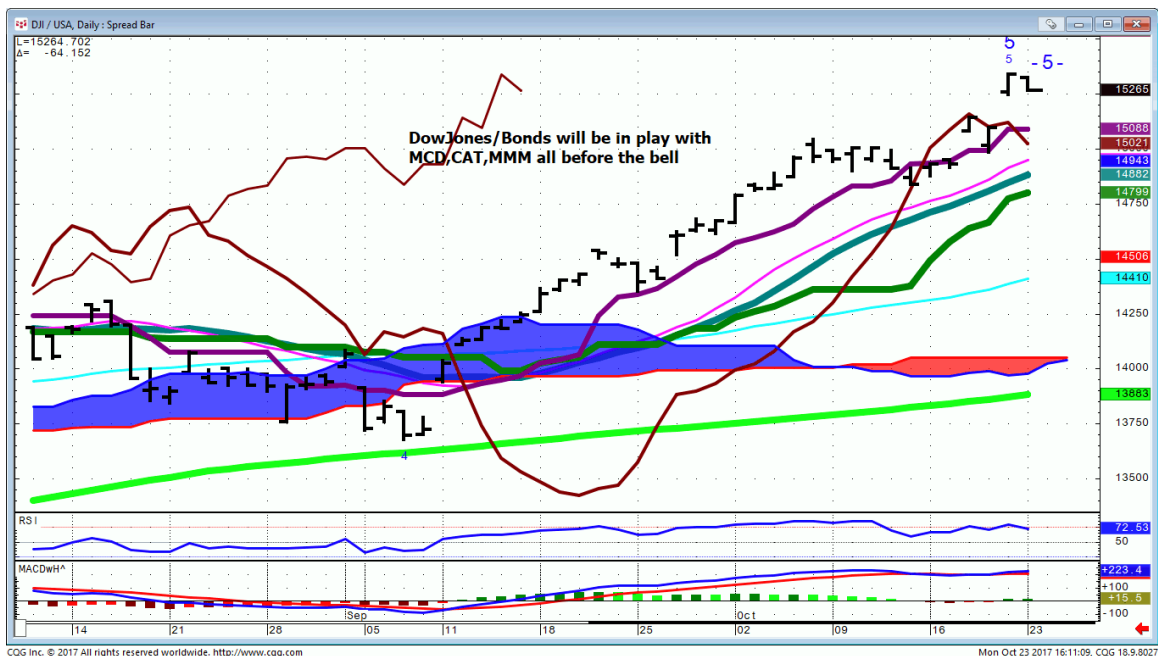
## SPY....



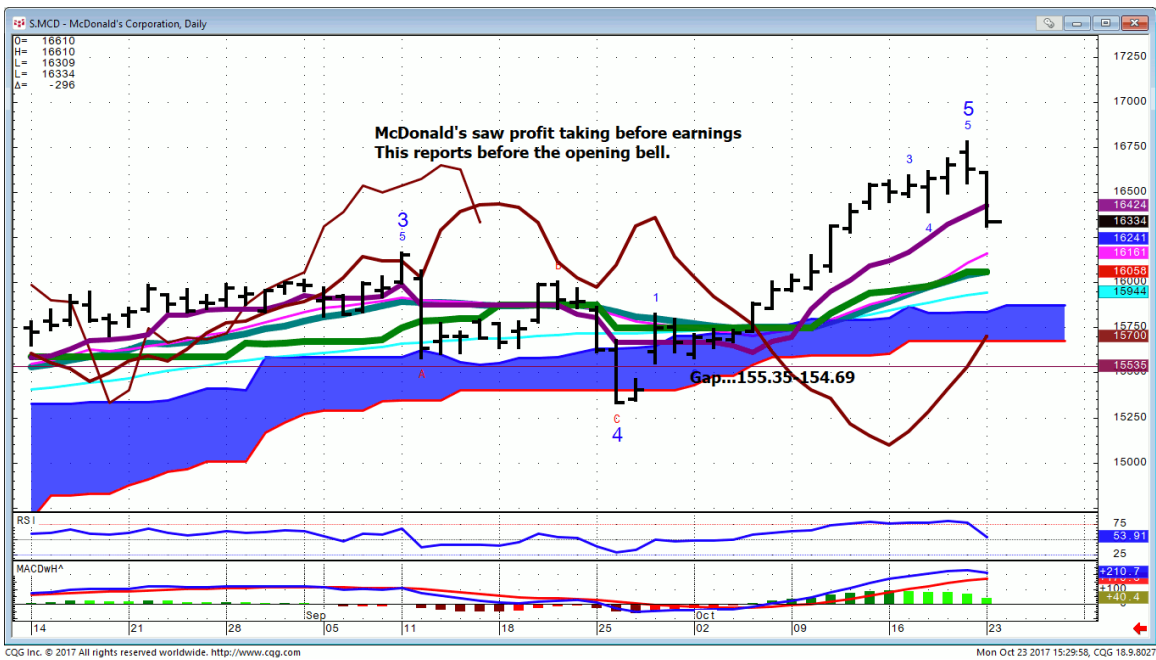
# Spu's... Pit daily



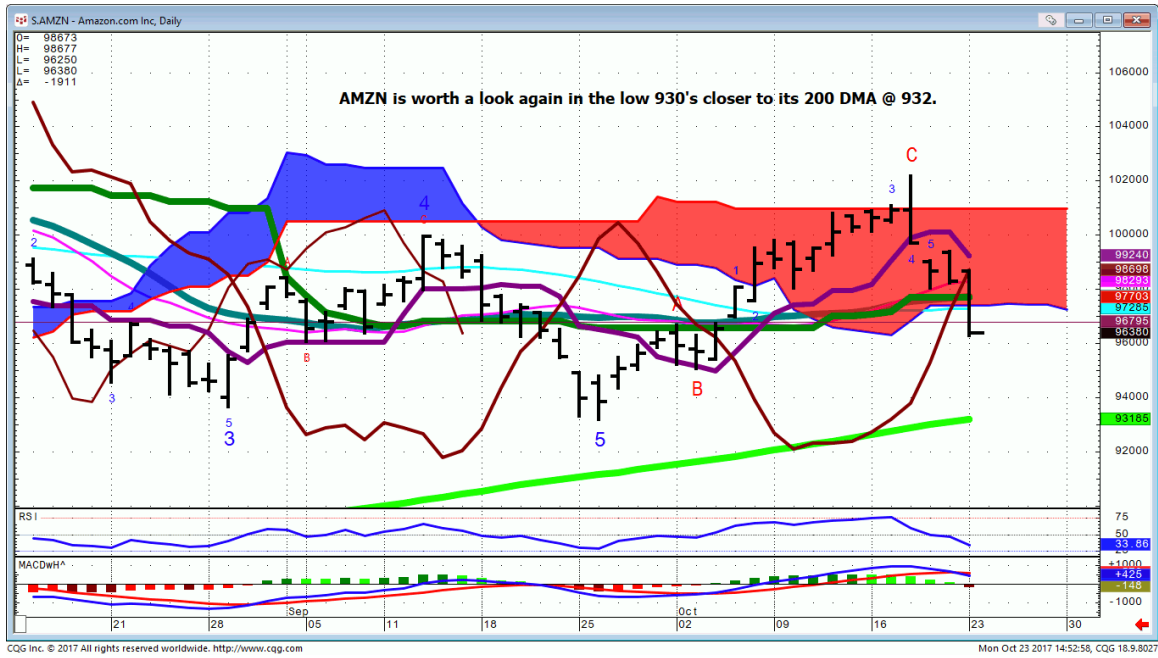
**DJI/Bonds...** pending earnings this has the potential for a 2 day Island top, which could elect a wave of profit taking.



**MCD...I'm a buyer in the mid 150's around the gap**



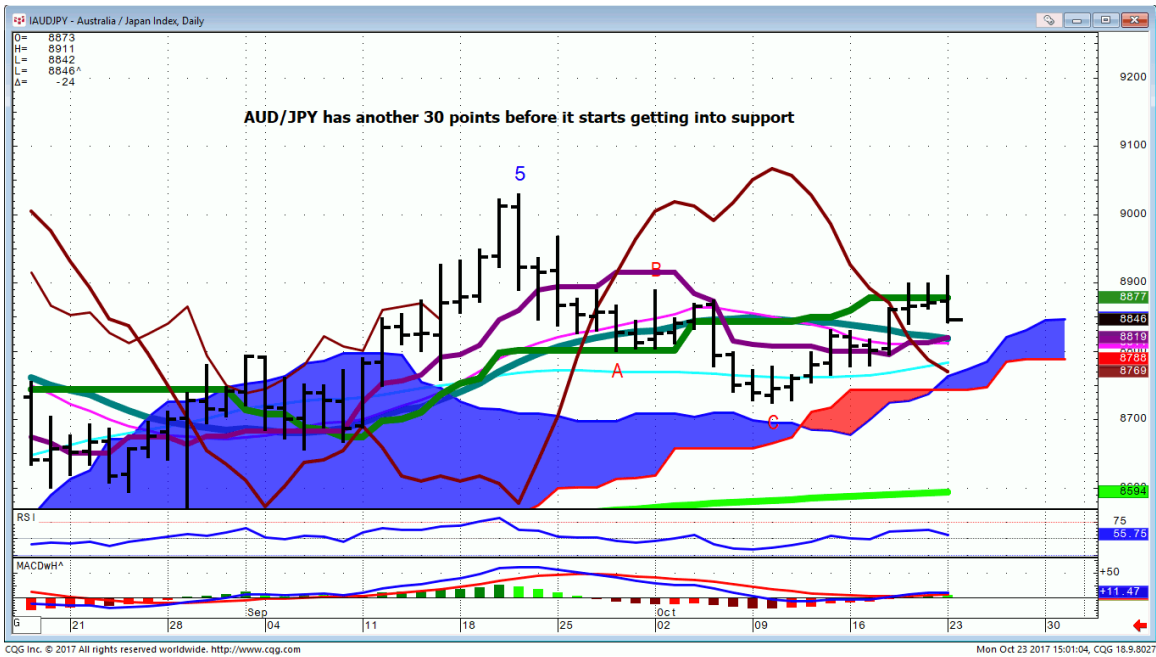
# AMZN...



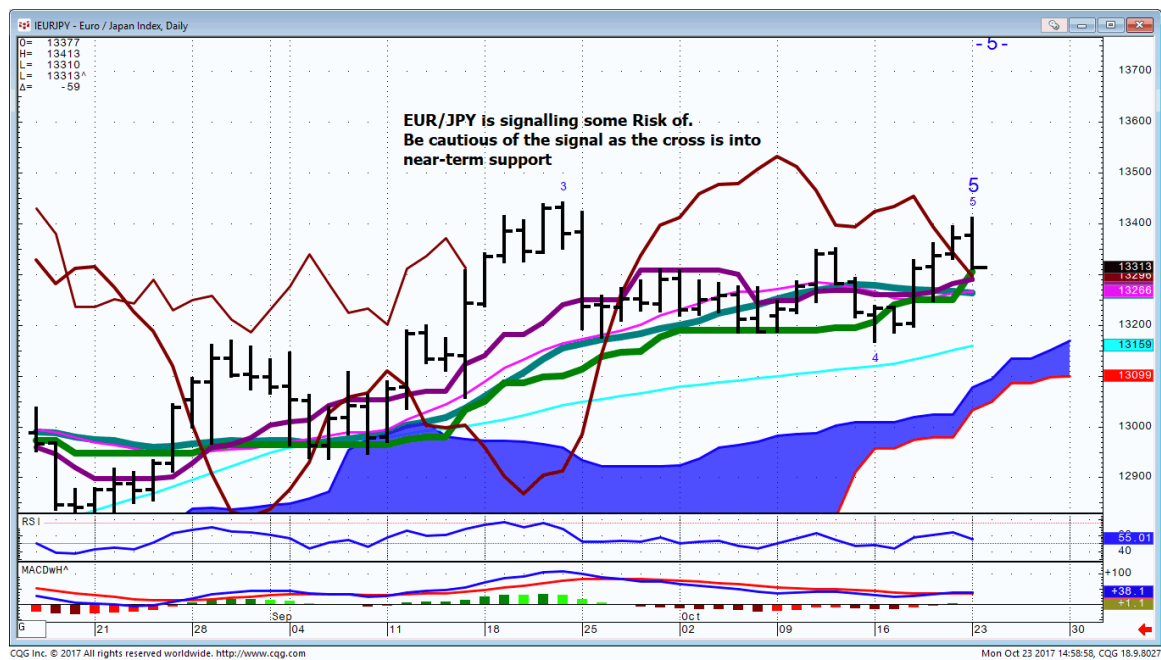
## ***Bonds***

FX

# AUD/JPY...

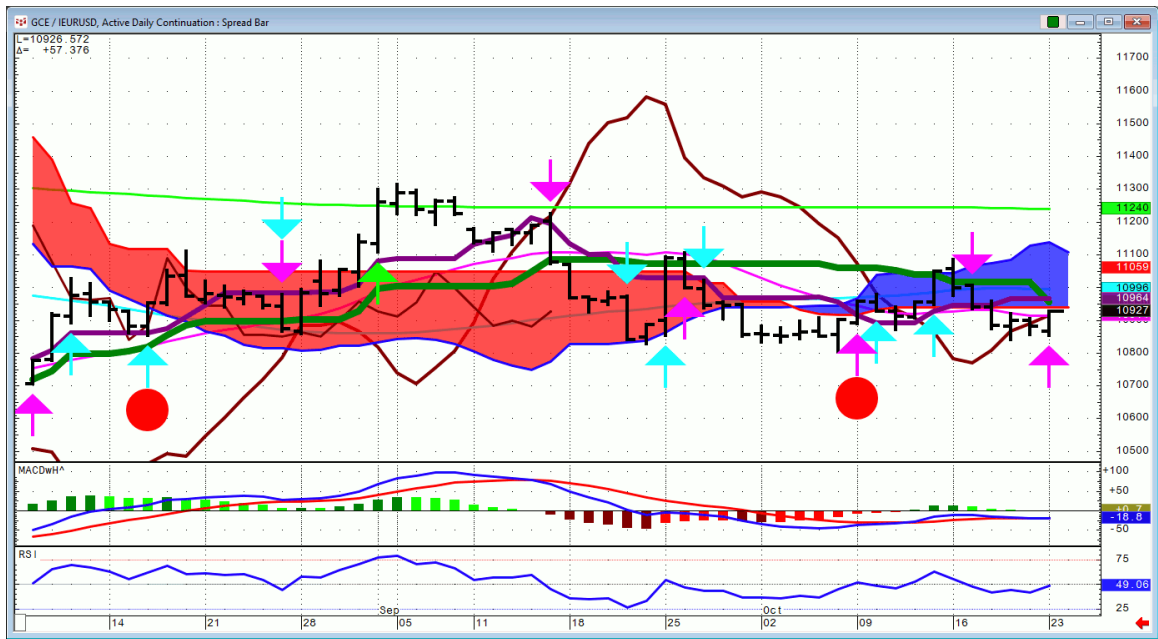


**EUR/JPY...**the question is whether this is just a retest of the upside reversal bar on the weekly pattern or something more.

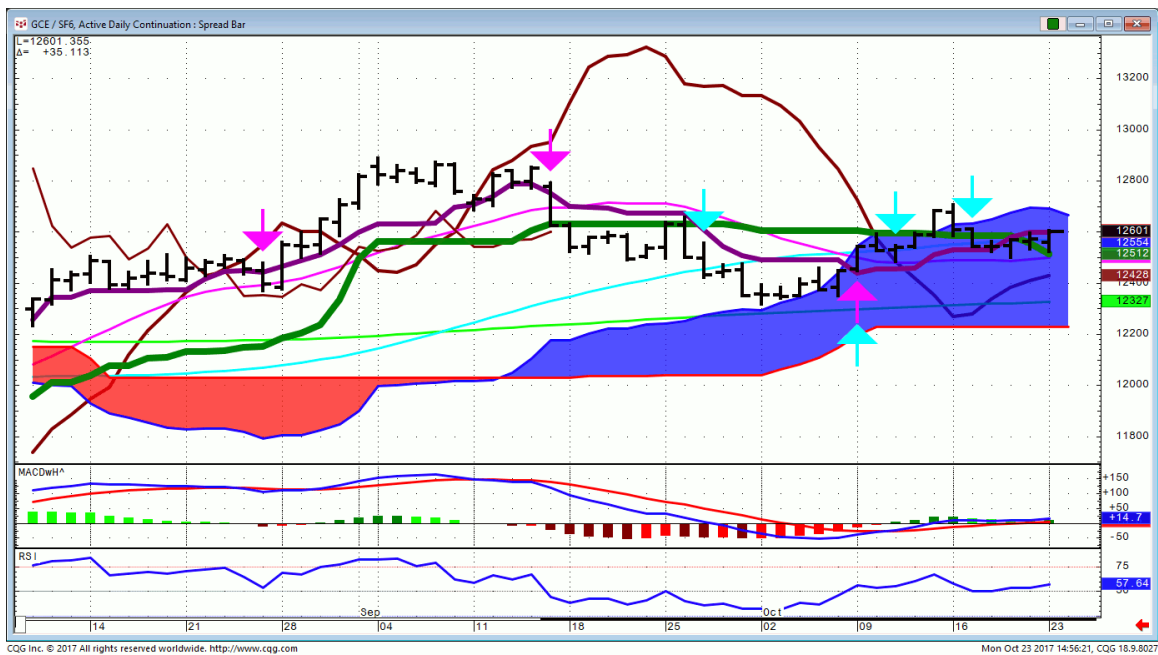


# Commodities

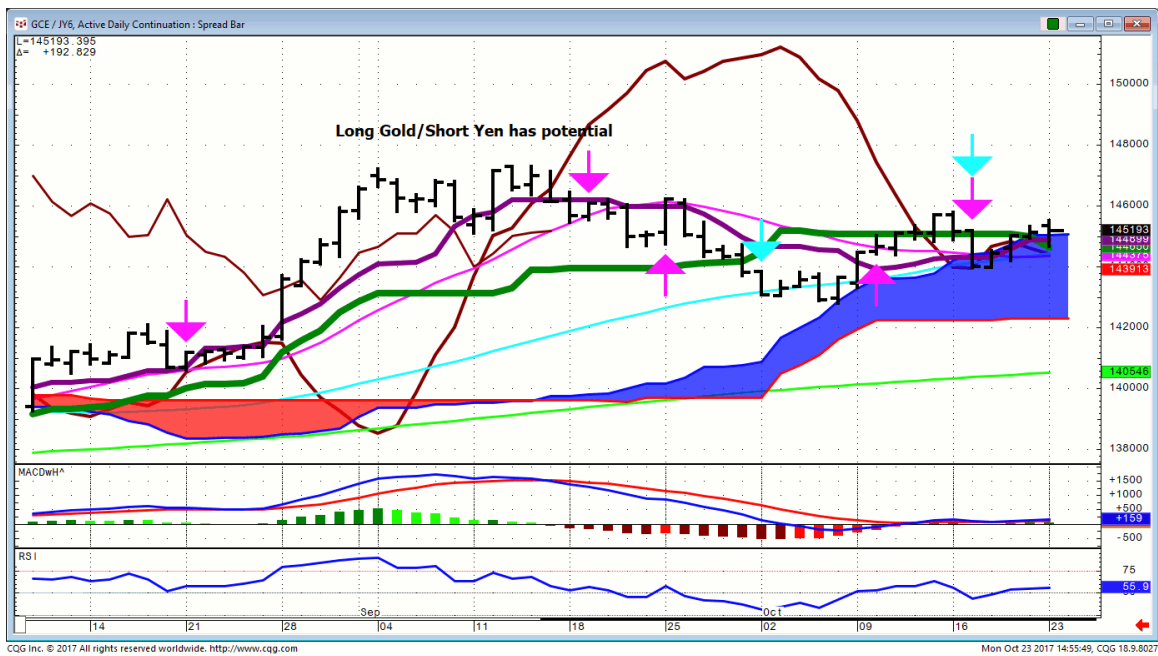
## GOLD/EURO...



# GOLD/Swiss Franc...



# Gold/Yen...



**General Comments or Valuable Insight**

**The Spu's are at an inflection point.**

**Pit Spu/Bonds as well as the Globex session Spu/Bonds closed right on their oscillators.**

**Spu's start down tomorrow they will break upside momentum setting up some back and fill.**

**This will be a earnings driven event before the bell.**

**<http://www.whitewavetradingstrategies.com/glossary/>**

**WhiteWave Trading Strategies**  
**Independent Research from the Pro's Pro**

**We Trade to Make Money**  
www.whitewavetradingstrategies.com  
info@whitewavetradingstrategies.com

## Chart Lines....Ichimoku

**Green Bright**...200 DMA **Aqua** 50 DMA **Blue Green** 21 DMA **Fuchsia** 18 DMA

These are simple moving averages. When you roll a chart to weekly or monthly the averages are simple weekly or monthly mvg averages.

The **reddish purple** is an embedded Imoku line which acts as momentum.

The **leaf green** is an embedded Imoku line which calculates 50% retraces.

