



## Daily Market Intelligence

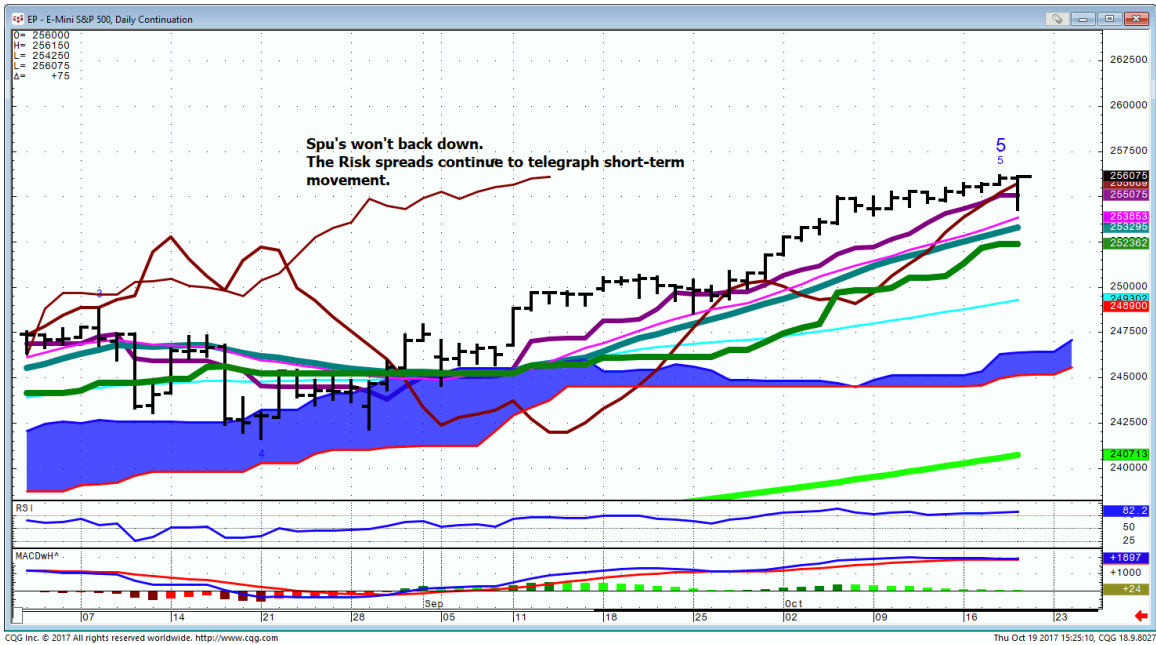
**Neutral DJI**  
**Neutral Spu's**  
**Neutral Nasd 100..**  
**Neutral DAX & Nikkei.**  
**Neutral All Bond markets**

**Risk Spreads are Bullish DJI,SPU,NASD**

**Long term Bullish Indices**  
**Looking for a better buying opportunity in October.**

# Stocks

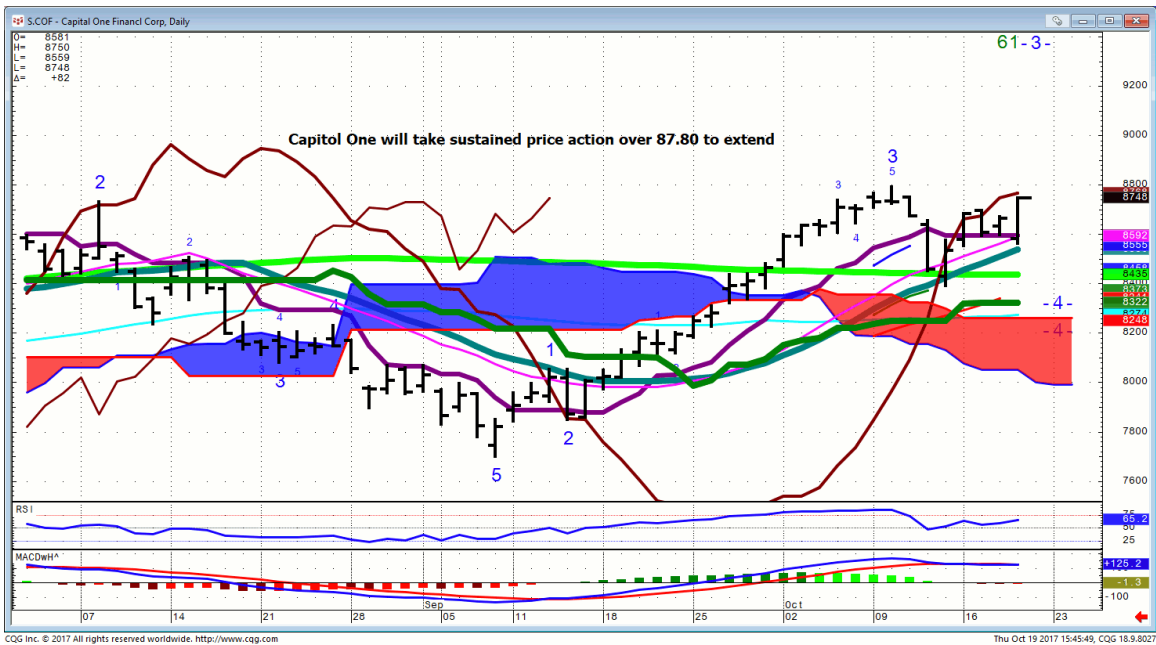
## Spu...



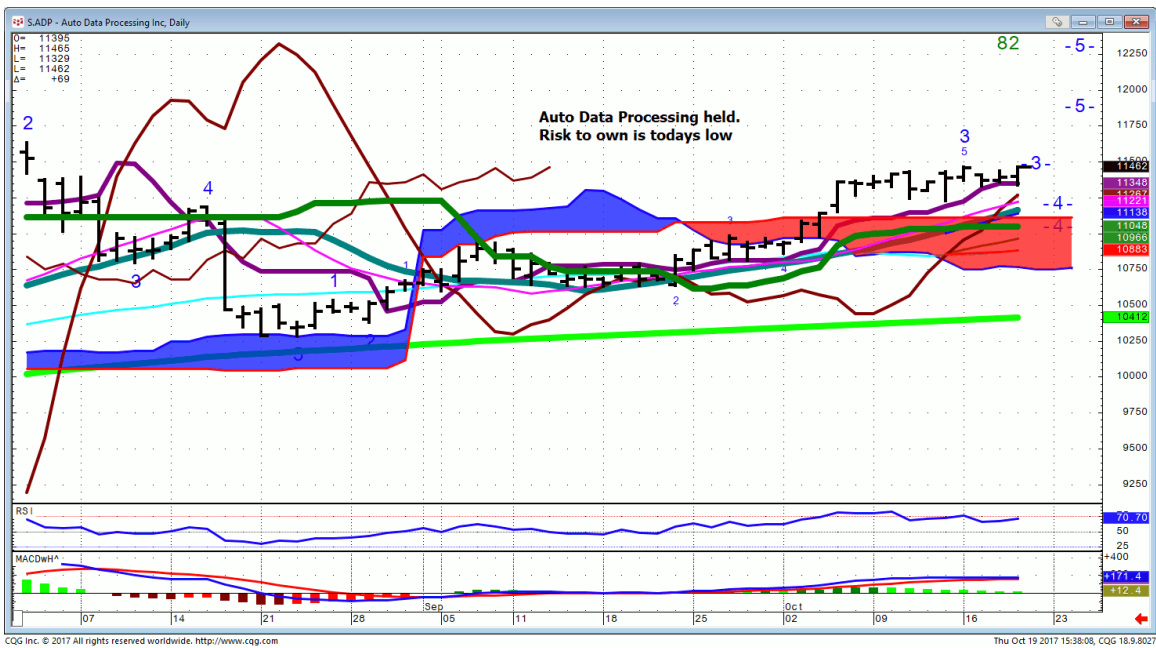
# AIG...



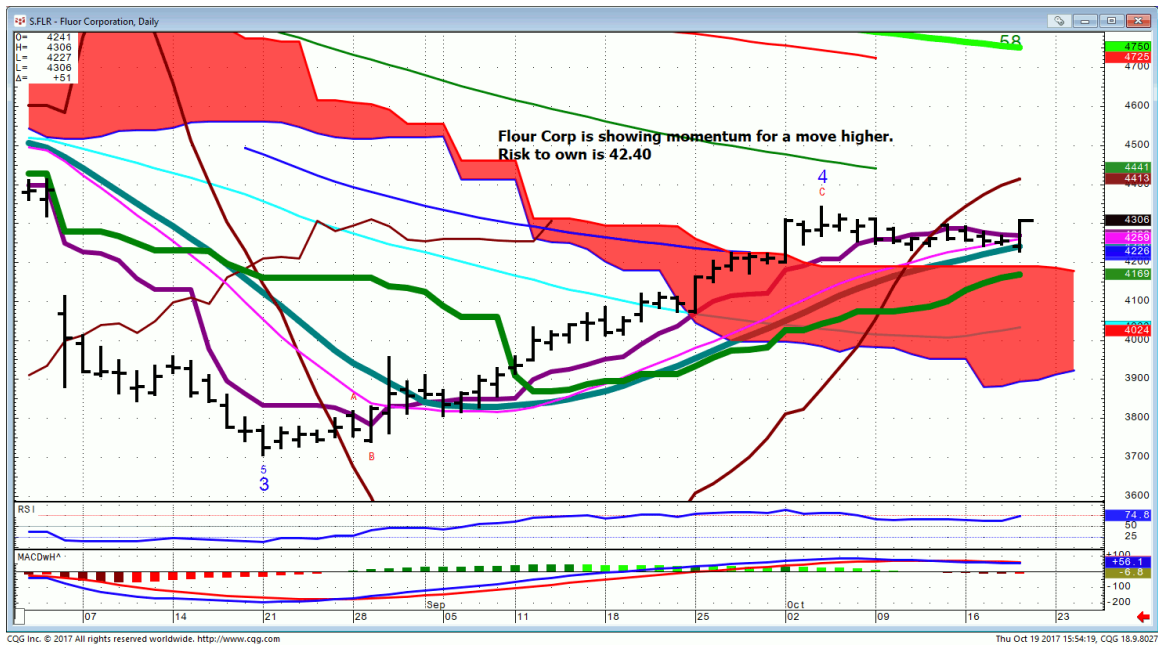
COF...



# ADP...



# FLR...can anyone say infrastructure?



# DGX...



# Bonds

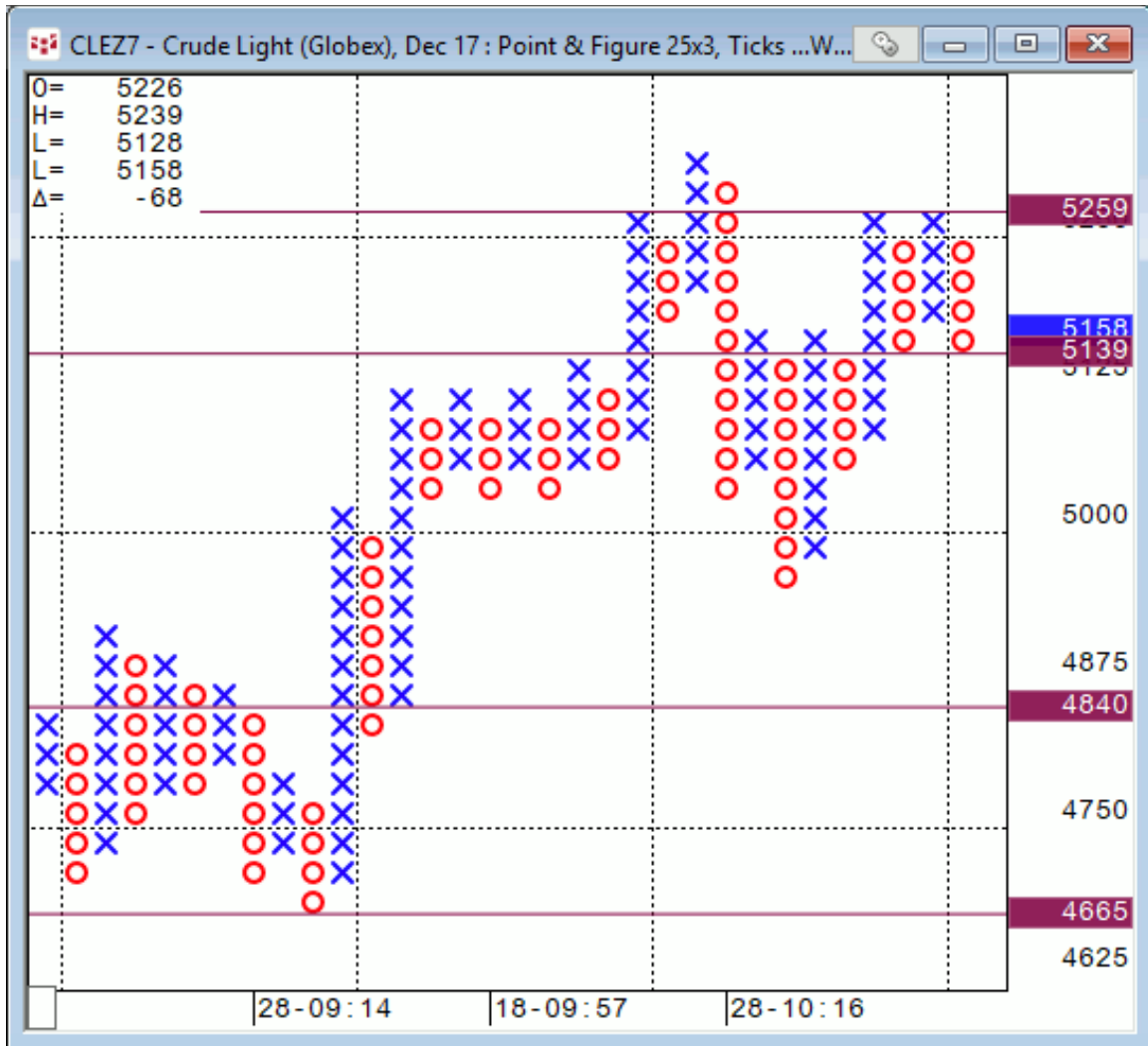
## 30 yr. Bonds..



***FX***

## Commodities

**Oil...25X3 Pont & Figure** stuck in the middle awaiting a new signal



## **General Comments or Valuable Insight**

**Surprisingly, today was normal price action in a Bull Equity market.**

**Wednesday high followed by that sucking sound (short-term traders thinking this was the big one) shorting and getting rolled.**

**CQG upgraded my system today. Fingers crossed that it remains stable and I can add some more capabilities.**

**Go Cubbies!!**

**<http://www.whitewavetradingstrategies.com/glossary/>**

**WhiteWave Trading Strategies**  
**Independent Research from the Pro's Pro**

**We Trade to Make Money**  
[www.whitewavetradingstrategies.com](http://www.whitewavetradingstrategies.com)  
[info@whitewavetradingstrategies.com](mailto:info@whitewavetradingstrategies.com)

## Chart Lines....Ichimoku

**Green Bright**...200 DMA **Aqua** 50 DMA **Blue Green** 21 DMA **Fuchsia** 18 DMA

These are simple moving averages. When you roll a chart to weekly or monthly the averages are simple weekly or monthly mvg averages.

The **reddish purple** is an embedded Imoku line which acts as momentum.

The **leaf green** is an embedded Imoku line which calculates 50% retraces.

