



Daily Market Intelligence

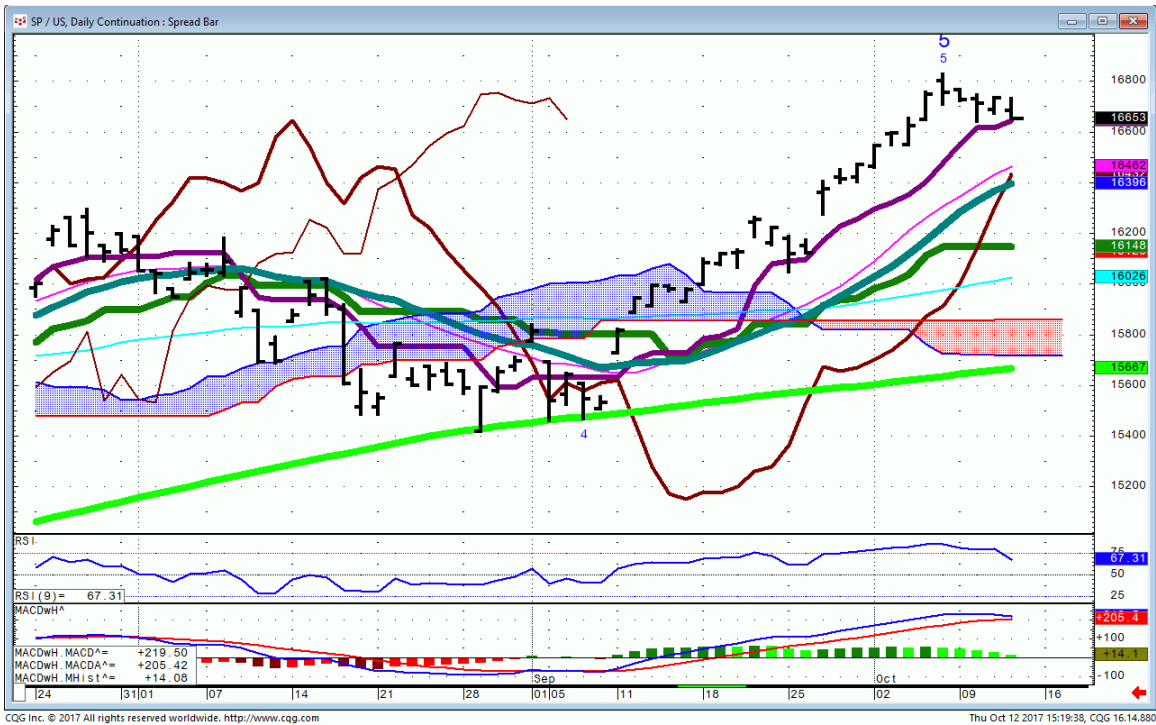
Neutral DJI
Neutral Spu's
Neutral Nasd 100..
Neutral DAX & Nikkei.
Neutral All Bond markets

Risk Spreads are Bullish DJI,SPU,NASD

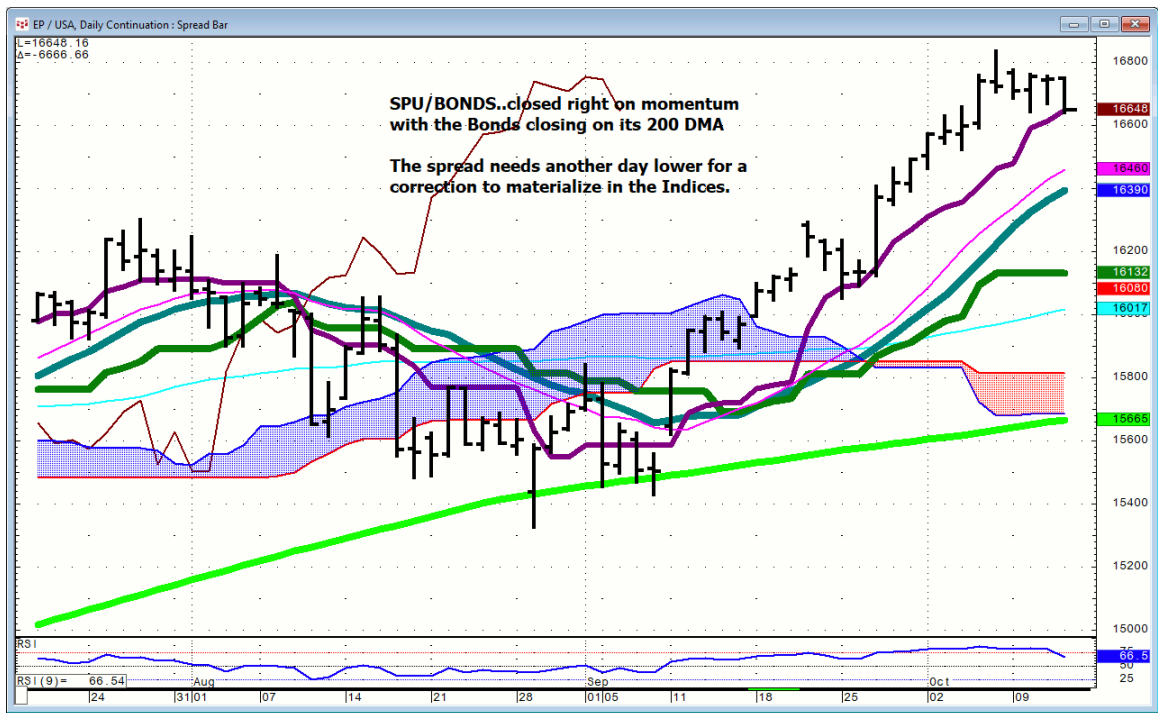
Long term Bullish Indices
Looking for a better buying opportunity in October.

Stocks

Spu/Bond...daily



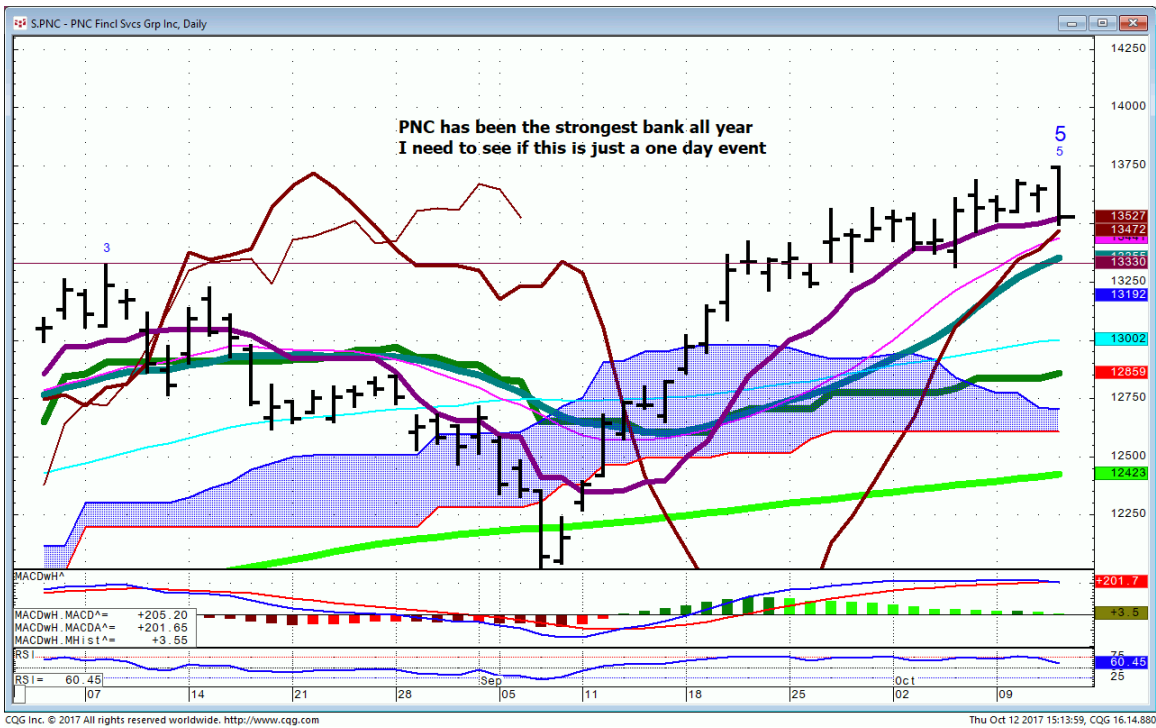
Spu / Bonds... all session



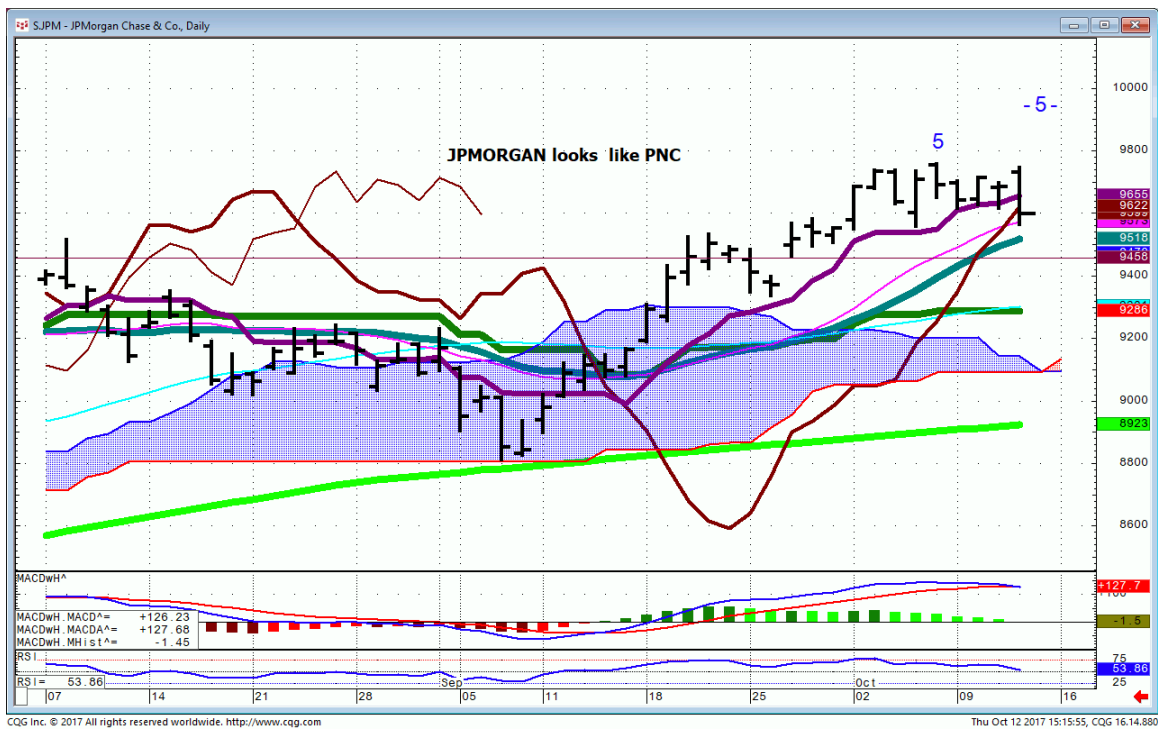
C...



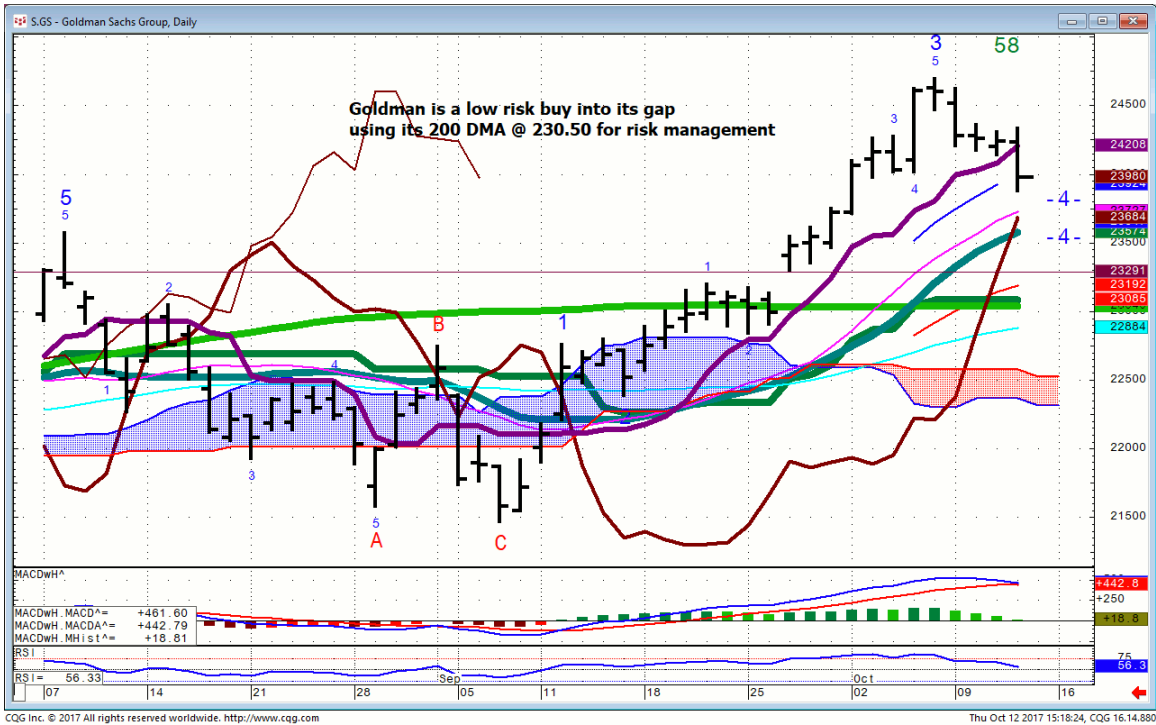
PNC...



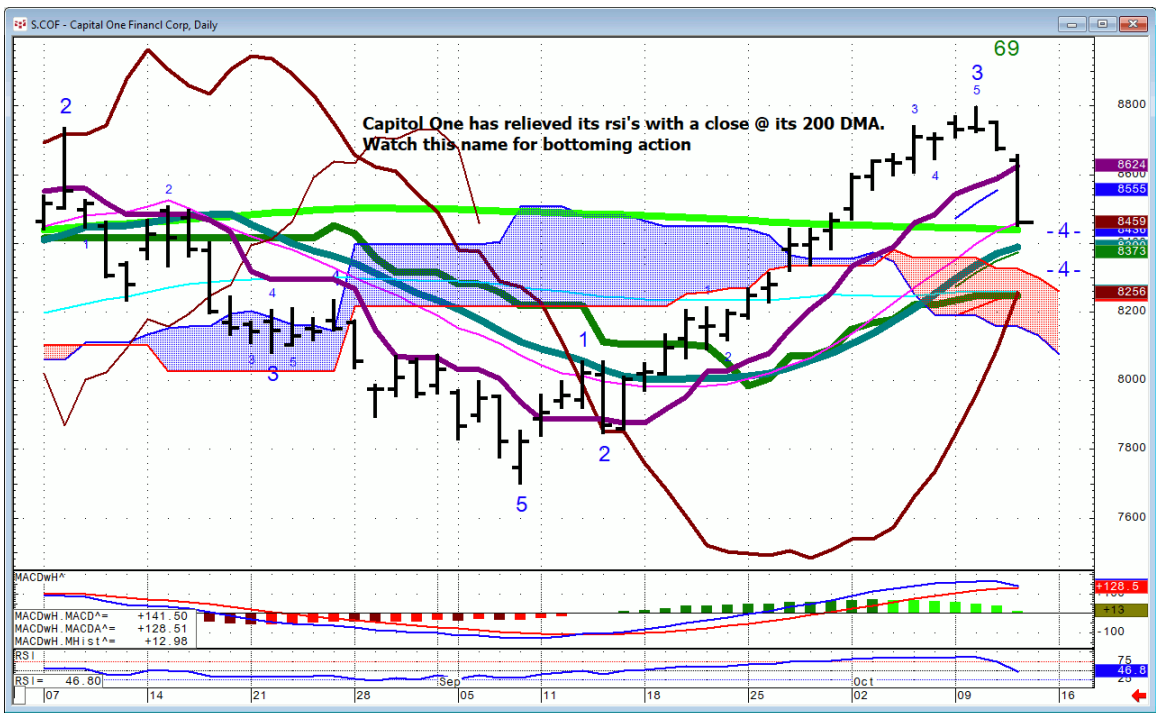
JPM...



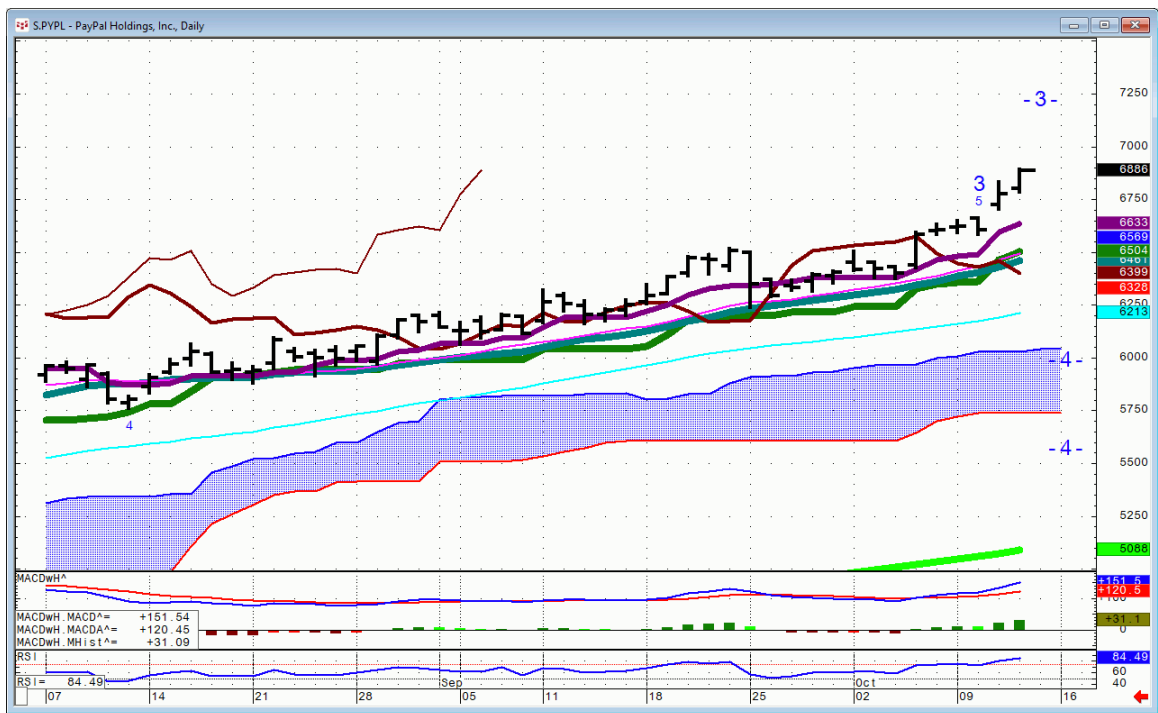
GS...



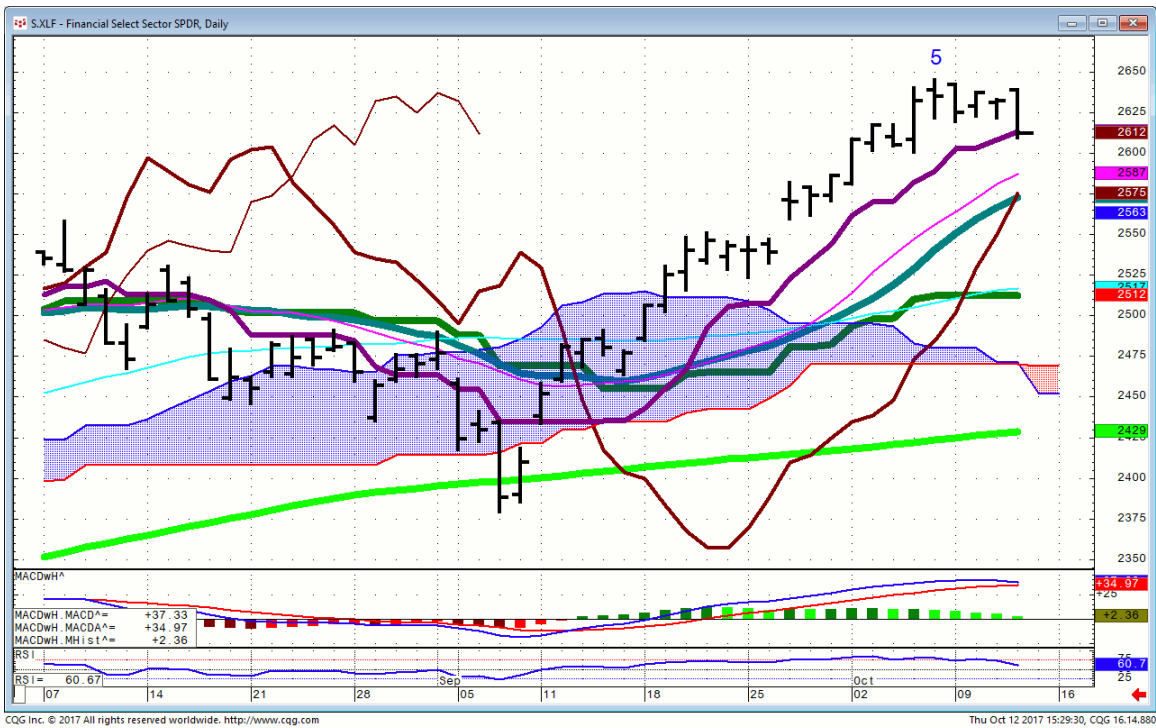
COF...



PYPL...Square & Paypal were bought on the spread all day.
New banking vs brick & mortar.

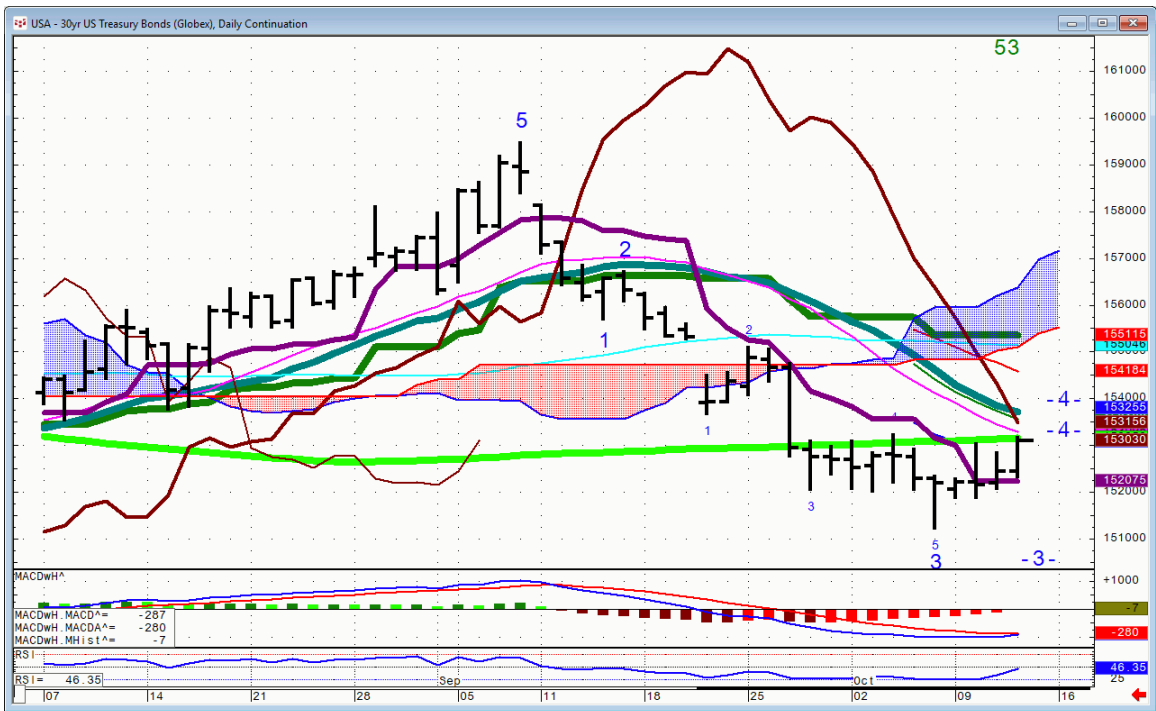


XLFF...Financial Sector ETF closed on momentum. This needs to prove itself lower with the rest of the Traditional big Banks in the A.M.



Bonds

30 yr. Bonds..

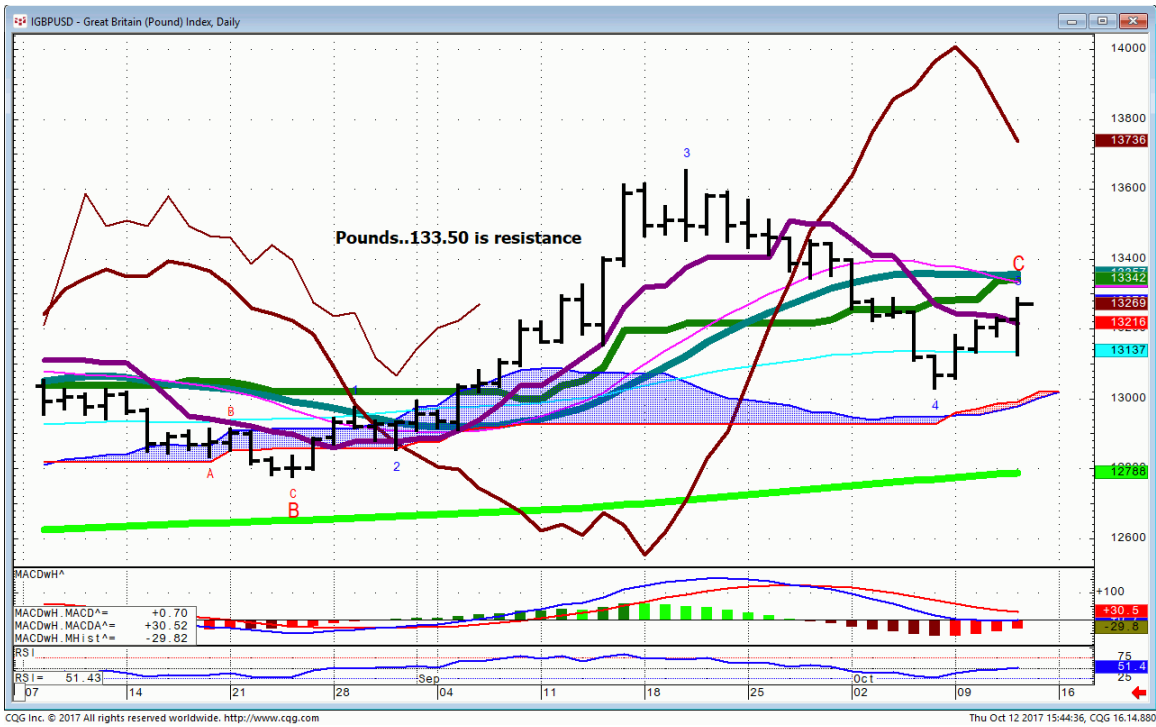


TLT...

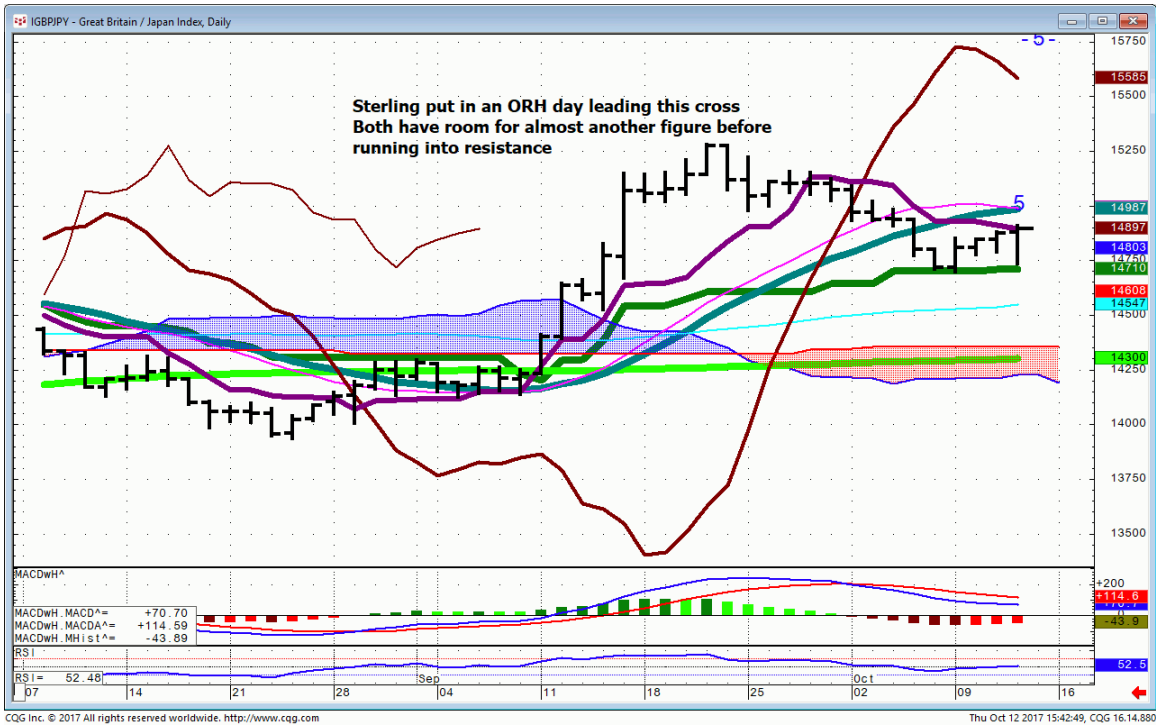


FX

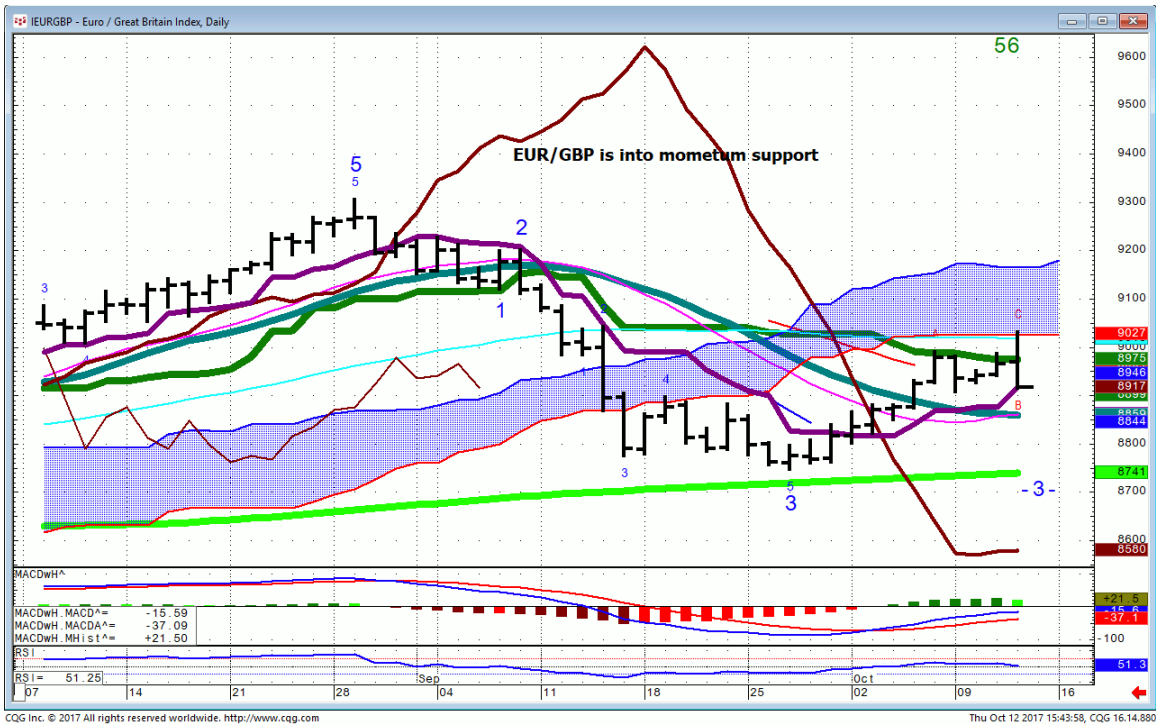
GBP/USD...Follow the Bonds.



GBP/JPY...



EUR/GBP...



Commodities

General Comments or Valuable Insight

Bonds led a small correction in the Risk spreads.

Watch the Bonds to see if a further correction will be all Bond driven.

Bigger financials sold off as Industrials held with CAT,DE,LMT & MCD leading.

More stock rotation with the Indices in Full Chop mode.

The Financials should be put on your radar for bottoming action and longer-term buy.

Pending price action it could be tomorrow or next week.

With the Paypal & Square in vertical mode one has to be on the lookout for the algos to unwind today's spreading.

Bottom fishing in the Brick & Mortar names and profit taking in the virtual banks.

The intermediate Spu P&F chart needs a break into 2533 ish for a reversal.

The Long-term P&F needs a break to just above 2500 for a reversal and a low risk Index buy.

In the meantime it will be name game.

<http://www.whitewavetradingstrategies.com/glossary/>

WhiteWave Trading Strategies
Independent Research from the Pro's Pro

We Trade to Make Money
www.whitewavetradingstrategies.com
info@whitewavetradingstrategies.com

Chart Lines....Ichimoku

Green Bright...200 DMA **Aqua** 50 DMA **Blue Green** 21 DMA **Fuchsia** 18 DMA

These are simple moving averages. When you roll a chart to weekly or monthly the averages are simple weekly or monthly mvg averages.

The **reddish purple** is an embedded Imoku line which acts as momentum.

The **leaf green** is an embedded Imoku line which calculates 50% retraces.

