



## Daily Market Intelligence

**Neutral DJI**

**Neutral Spu's**

**Neutral Nasd 100..**

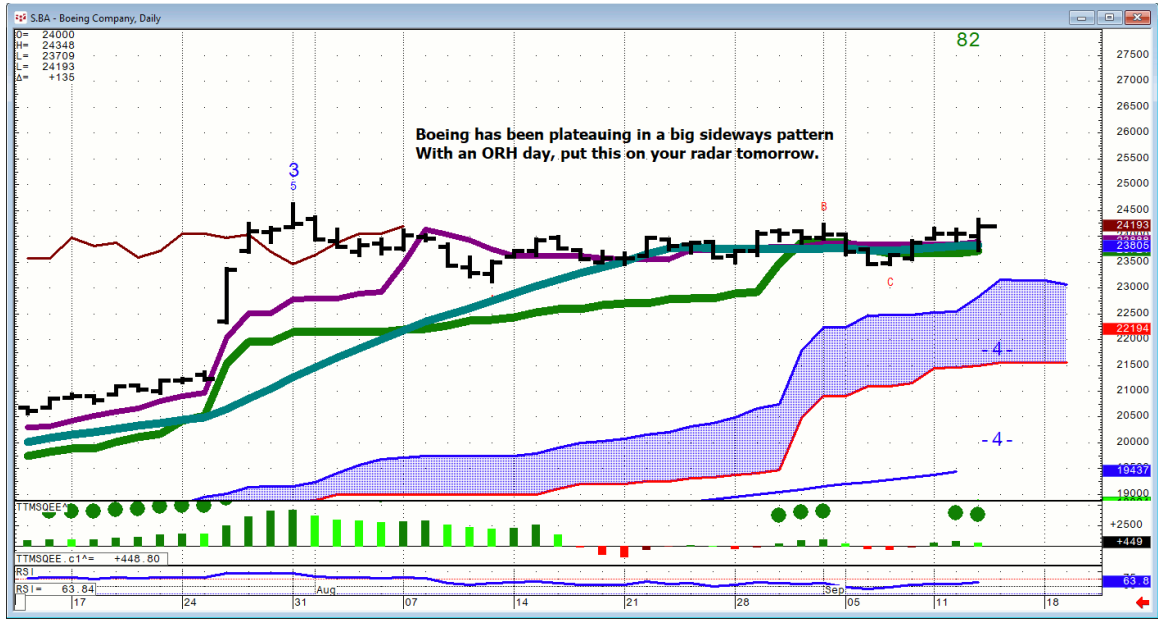
**Neutral DAX & Nikkei. Neutral**

**Neutral All Bond markets**

**Risk Spreads are Neutral DJI,SPU,NASD**

# Stocks

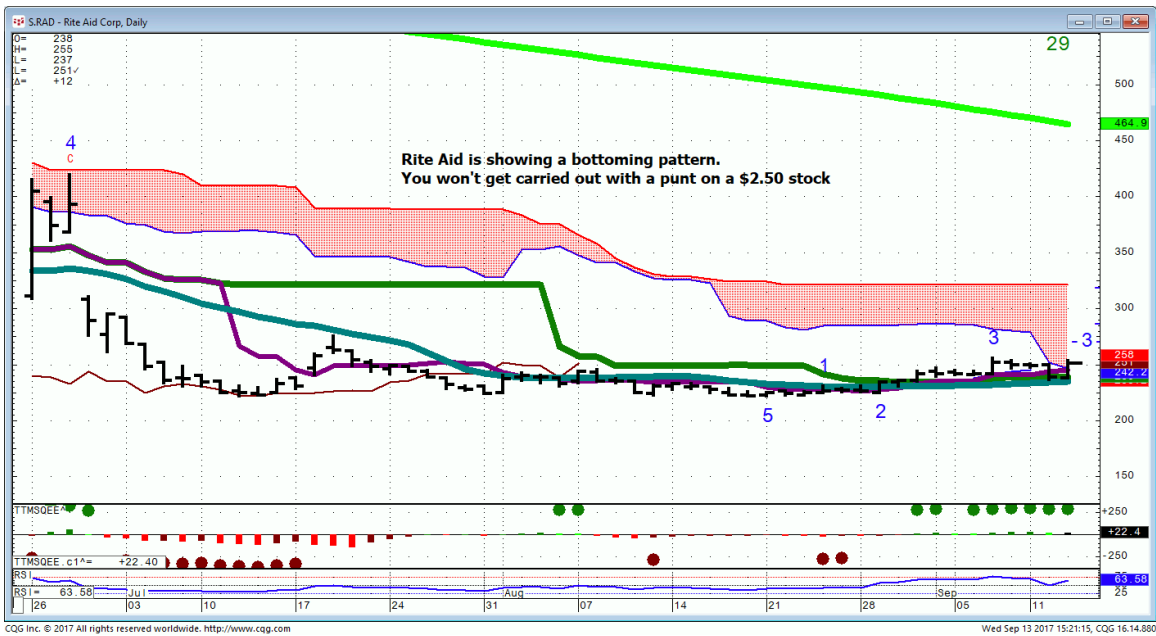
## BA...



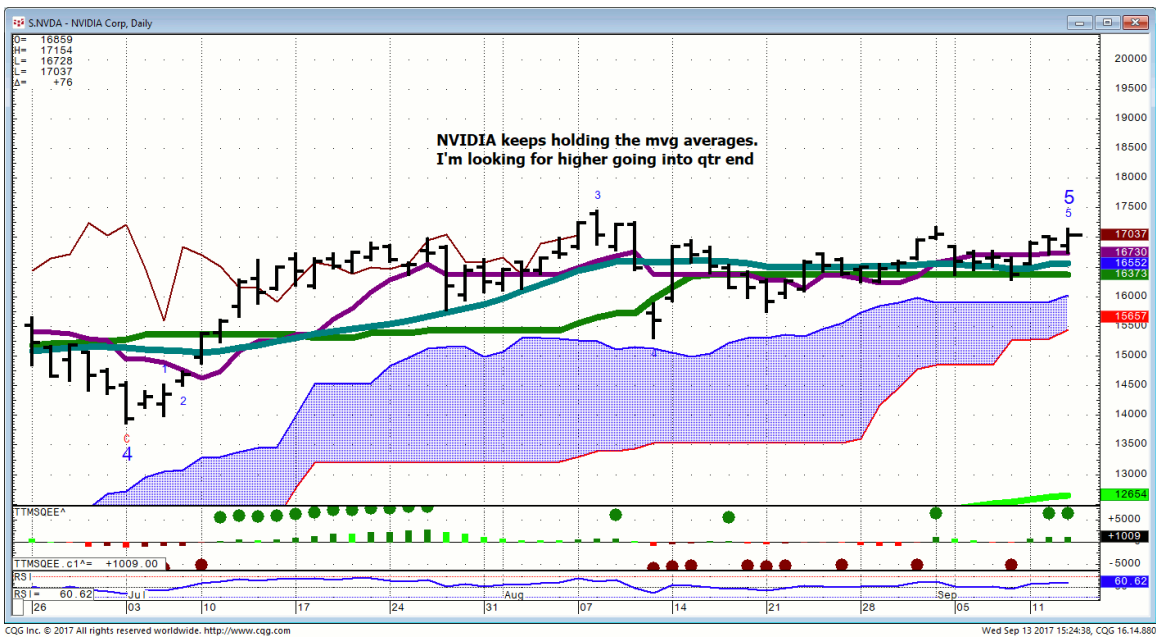
BA...



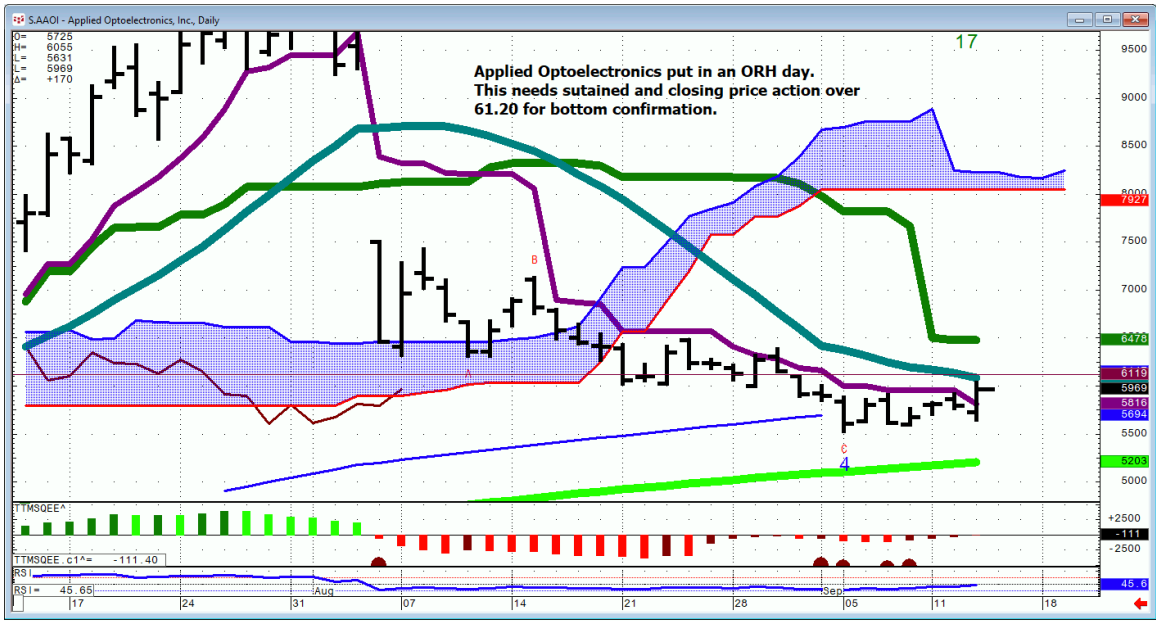
# RAD...Rite Aid



# NVDA...



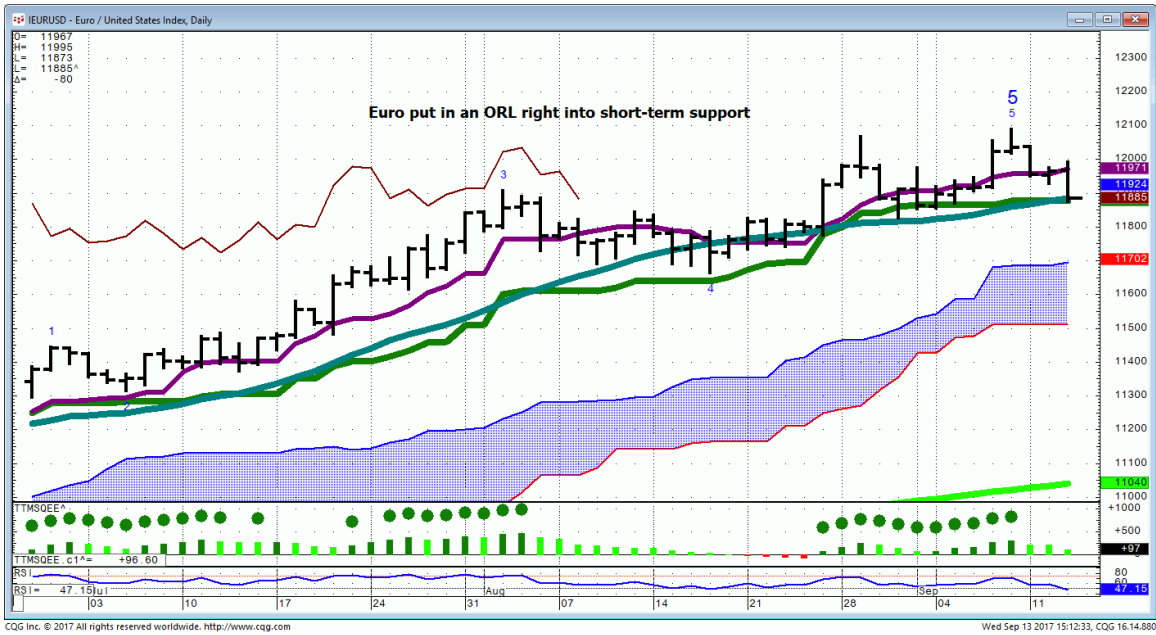
# AAOI...Applied Optoelectronics



## ***Bonds***

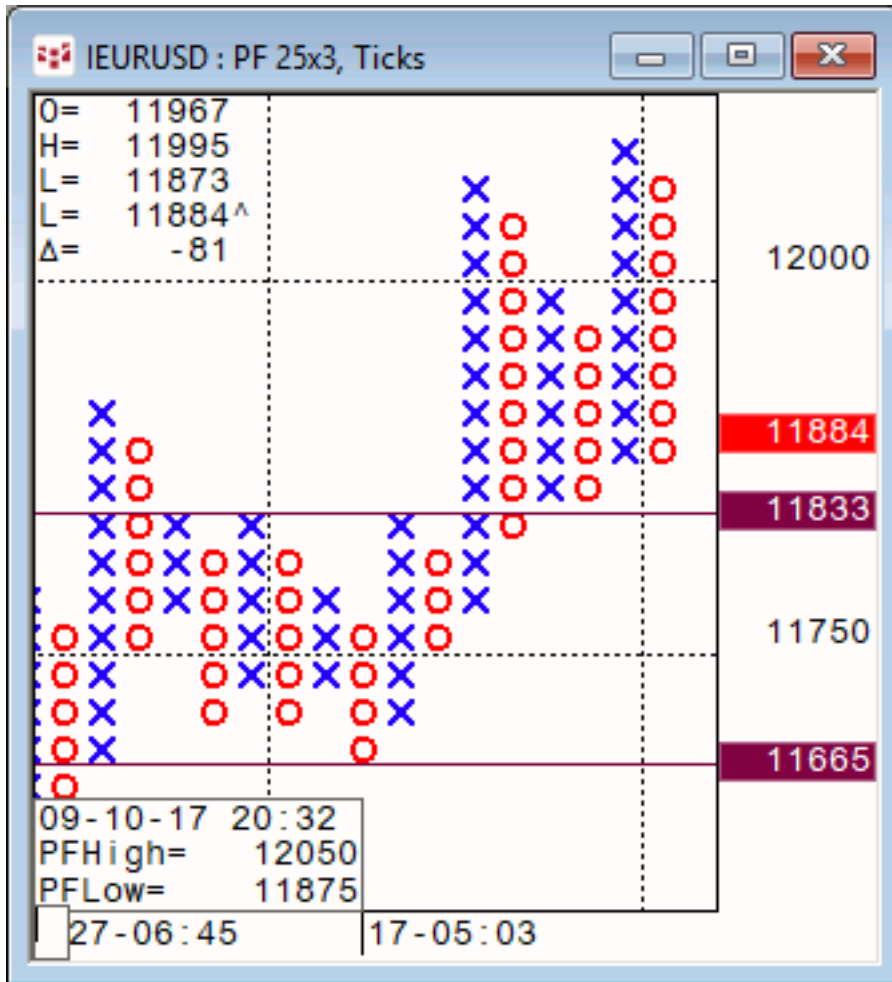
FX

Euro...



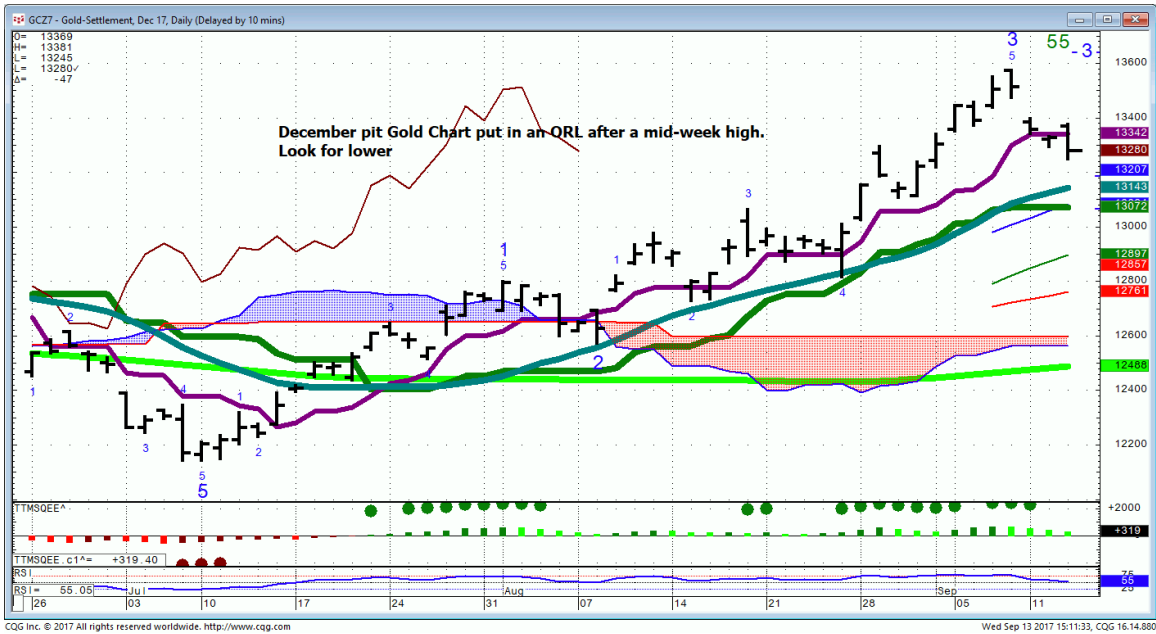


**Euro...25X3 P&F...** has filled out the P&F. This picture shows all new weakness under 118.40-50 is needed for a run to 116.

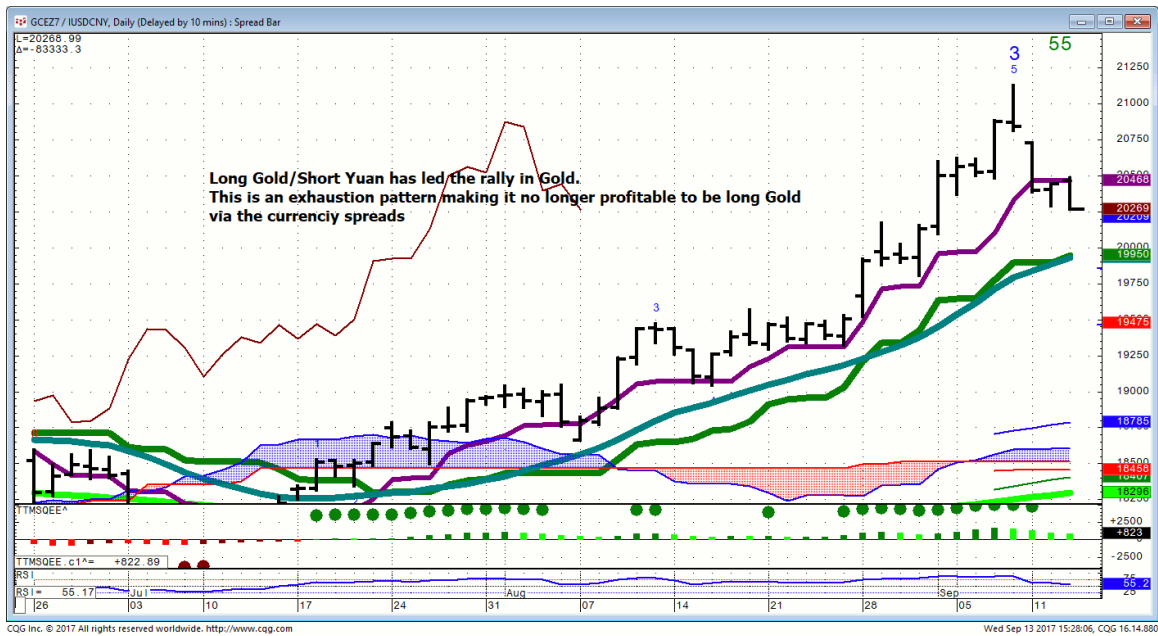


# Commodities

## Gold...



# Gold/Yuan



# OIL...



### **General Comments or Valuable Insight**

**It's been a name game and those fixated on the Indices had another frustrating day.**

**Gold was a New York opening range trade to the cellar.**

**Gold is still hanging in against the Euro despite gapping lower into the week.**

**Daily rant; I don't think the EFX (Equifax) wankers will be done being punished by the market until the yearly ORL stops are elected @ 91.72.**

**Then and only then would I even contemplate a bounce.**

**I'll await tomorrow to re access the world.**

**<http://www.whitewavetradingstrategies.com/glossary/>**

**WhiteWave Trading Strategies**  
**Independent Research from the Pro's Pro**

**We Trade to Make Money**  
www.whitewavetradingstrategies.com  
info@whitewavetradingstrategies.com