



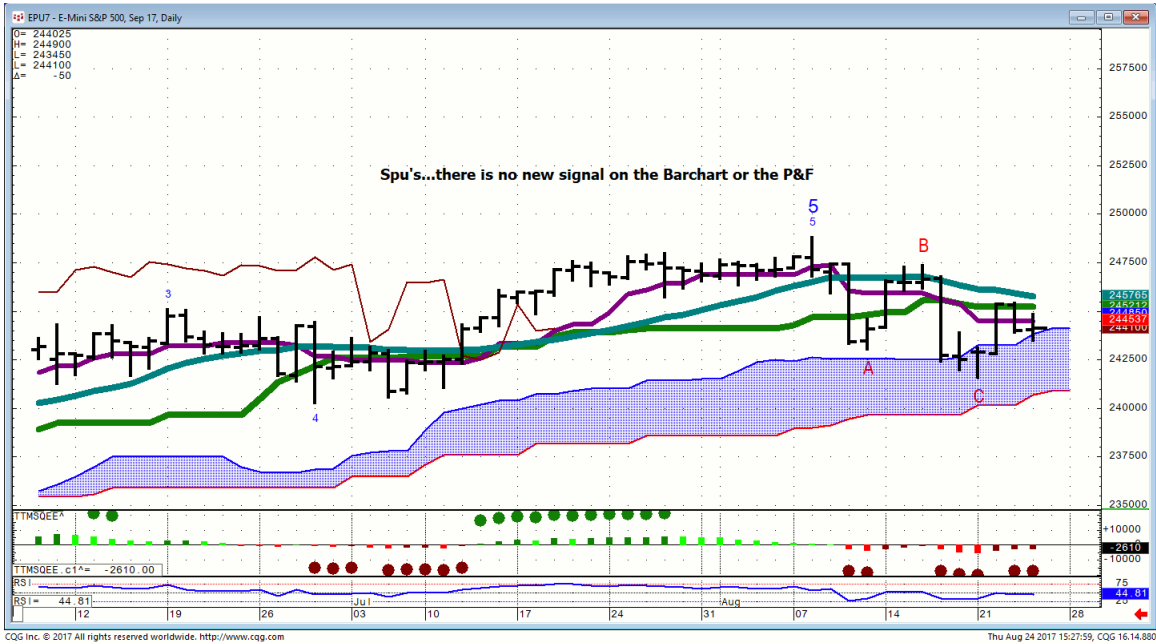
Daily Market Intelligence

Neutral DJI
Neutral Spu's
Neutral Nasd 100..
Neutral DAX & Nikkei.
Neutral All Bond markets

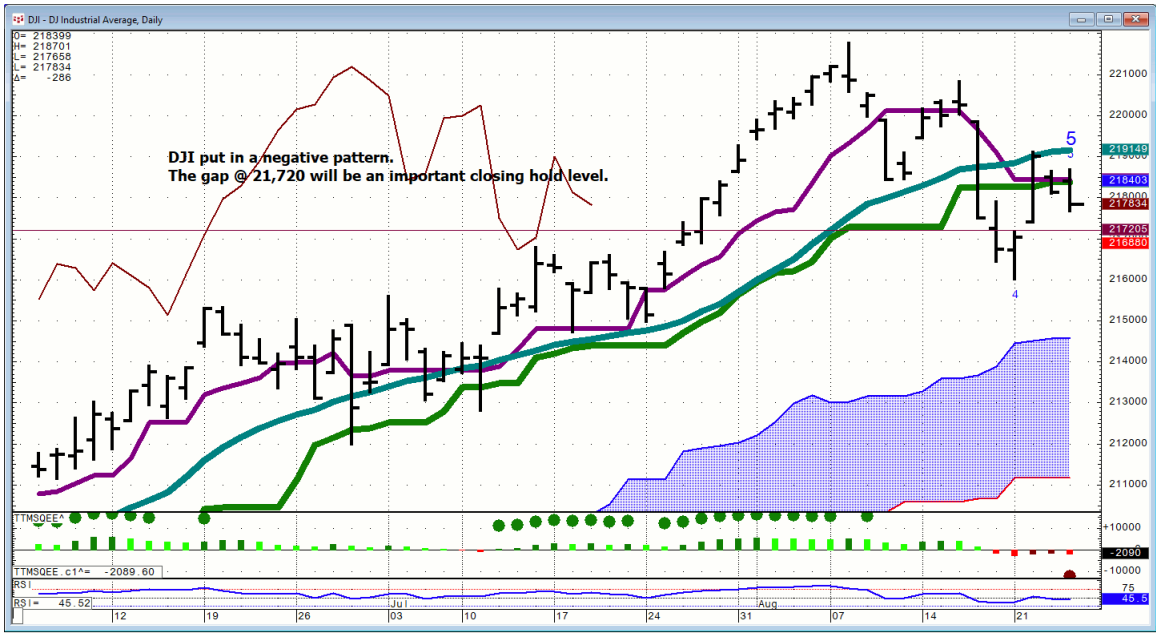
Risk Spreads are Neutral

Stocks

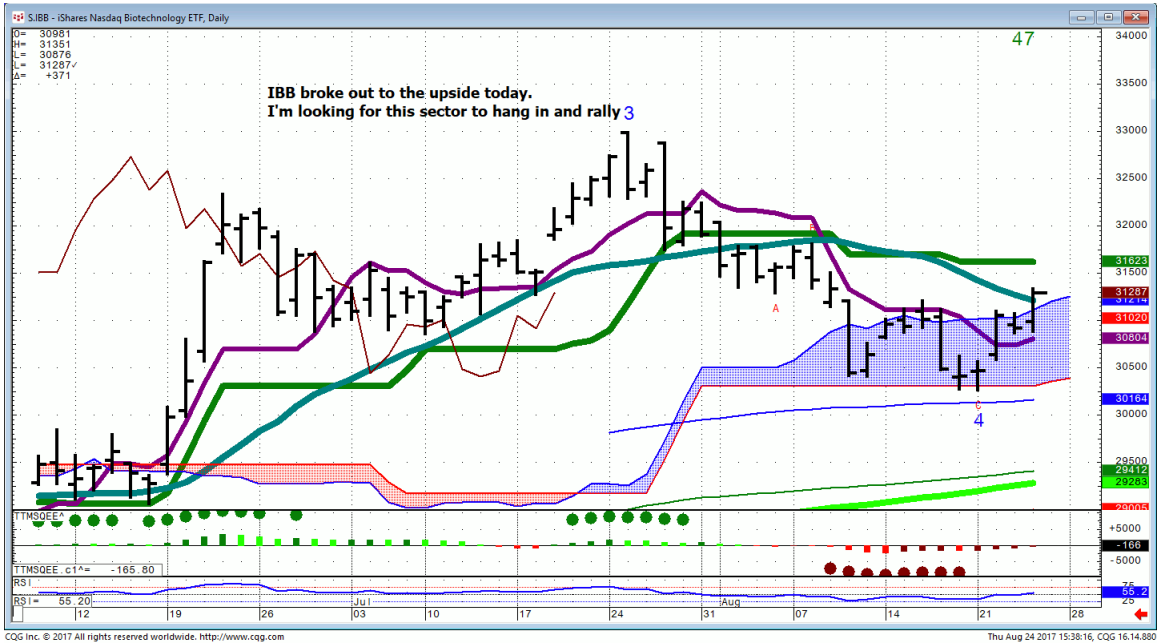
Spu...



DJI...



IBB...



Bonds

FX

Commodities

General Comments or Valuable Insight

Both the DJI & Nasd 100 put in ORL days.

**I'm not reading too much into those patterns as
The world awaits Yellen @ 9 A.M. CDT followed by Mario
@ 2 P.M. CDT.**

**I find it hard to fathom that the duo will do anything to
roil the markets.**

**Many Retail names had the stuffing kicked out of it
today.**

Healthcare was the recipient of the sector rotation.

**KSU could not hold a rally even with Mexico in rally
mode.**

**If you got involved with a long-term option strategy
you've the gift of time.**

**If it doesn't close tomorrow above today's 104.36 low
I'd let it go.**

Trump trading has become difficult.

Where is a roll of Duct tape when you need one?

<http://www.whitewavetradingstrategies.com/glossary/>

WhiteWave Trading Strategies
Independent Research from the Pro's Pro

We Trade to Make Money
www.whitewavetradingstrategies.com
info@whitewavetradingstrategies.com

