



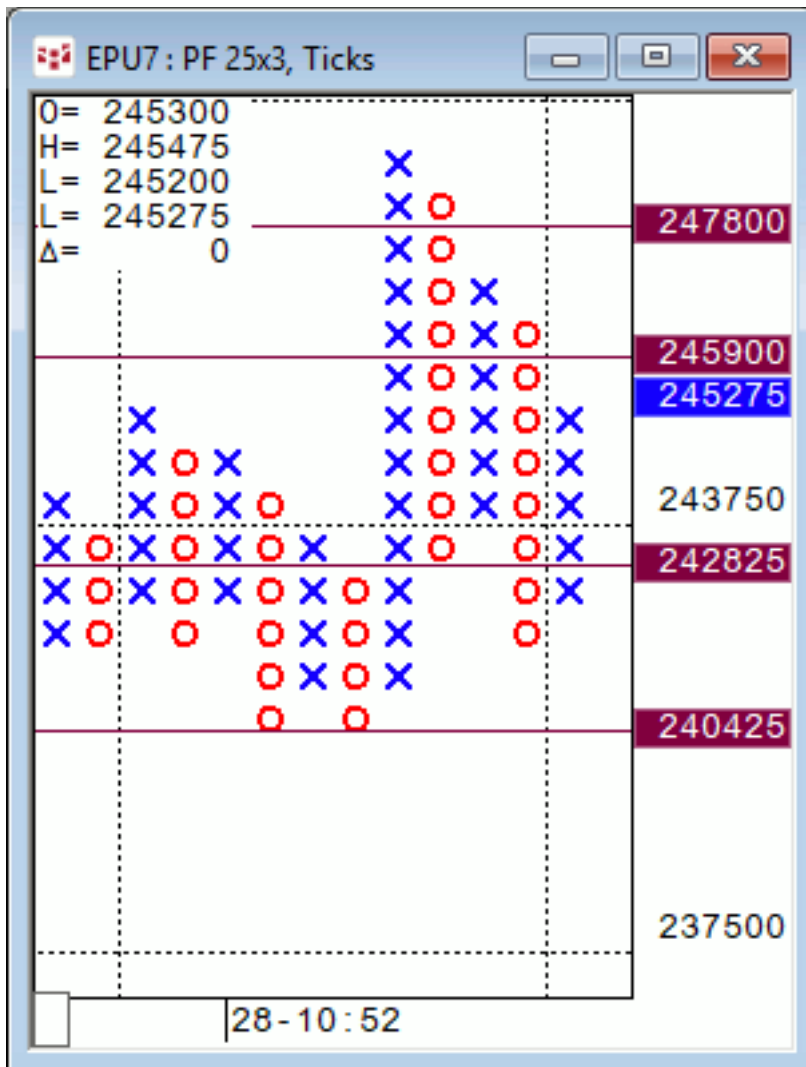
## Daily Market Intelligence

**Neutral DJI**  
**Neutral Spu's**  
**Neutral Nasd 100..**  
**Neutral DAX & Nikkei.**  
**Neutral All Bond markets**

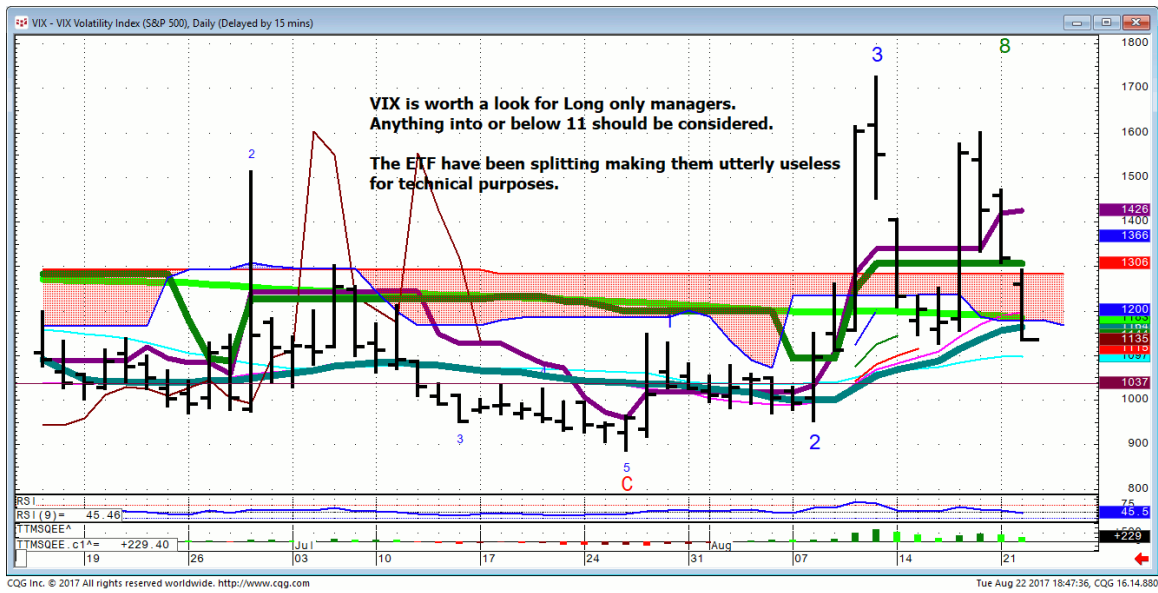
**Risk Spreads are Neutral**

## Stocks

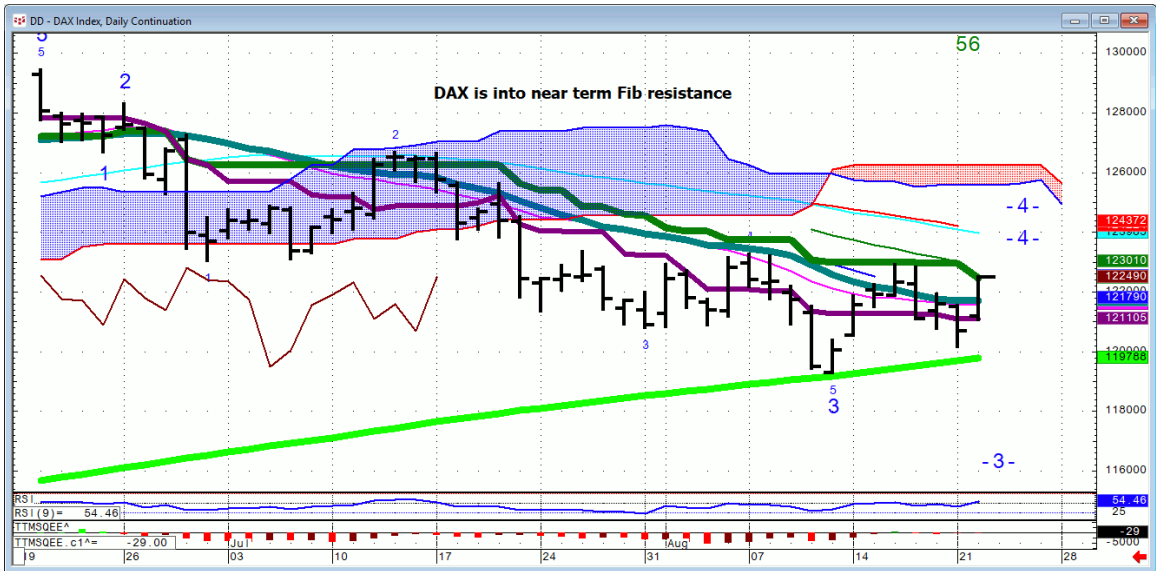
**Spu's 25X3 Point & Figure..have rallied 25 points without a 5 point pullback. 2459 is the upper inflection point where downside momentum accelerated from last week.**



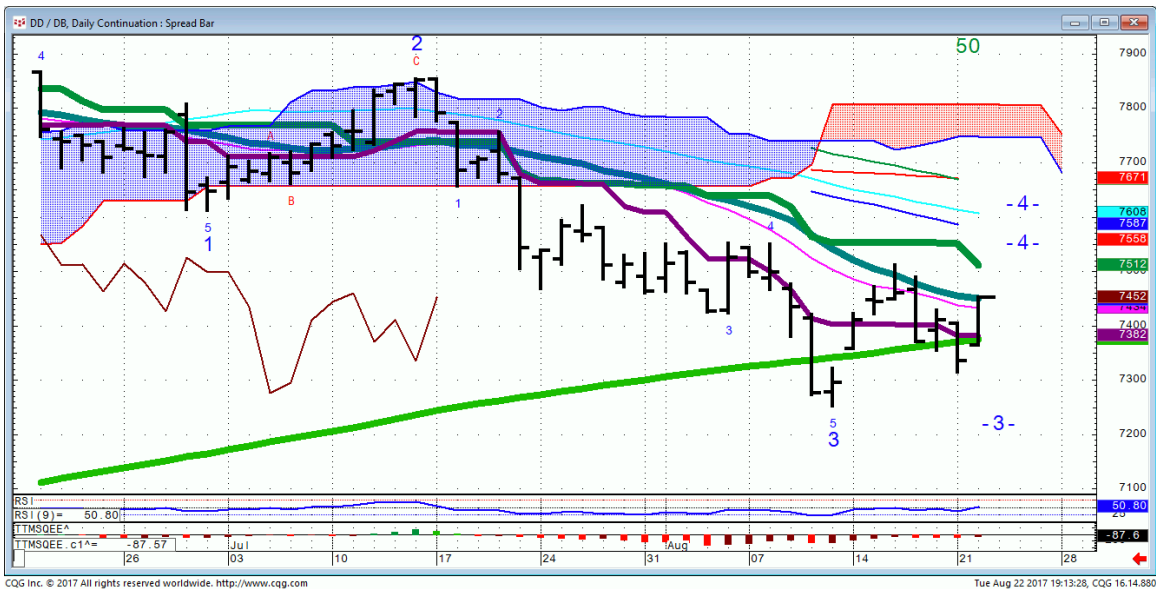
# VIX...



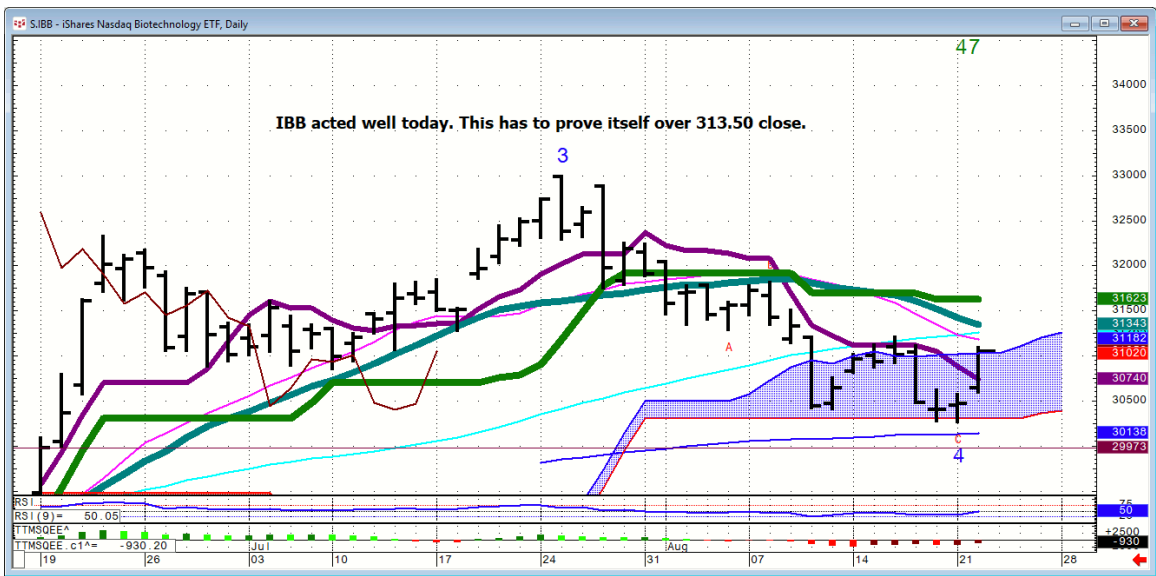
# DAX...



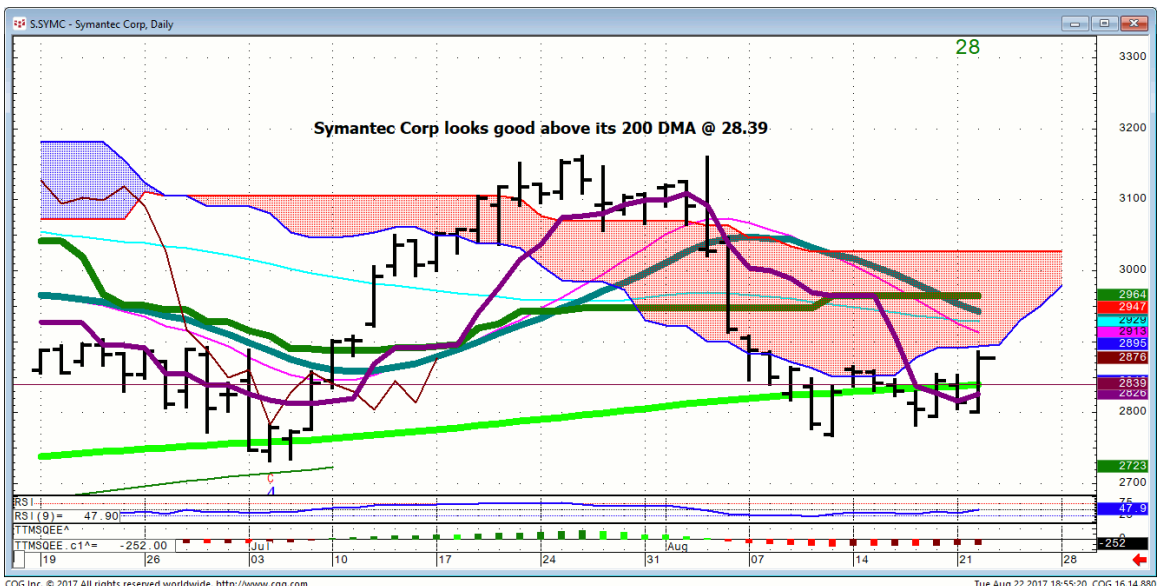
**DAX/BUND...is** into mvg avg resistance. Sustained price action above today's high is needed for more strength



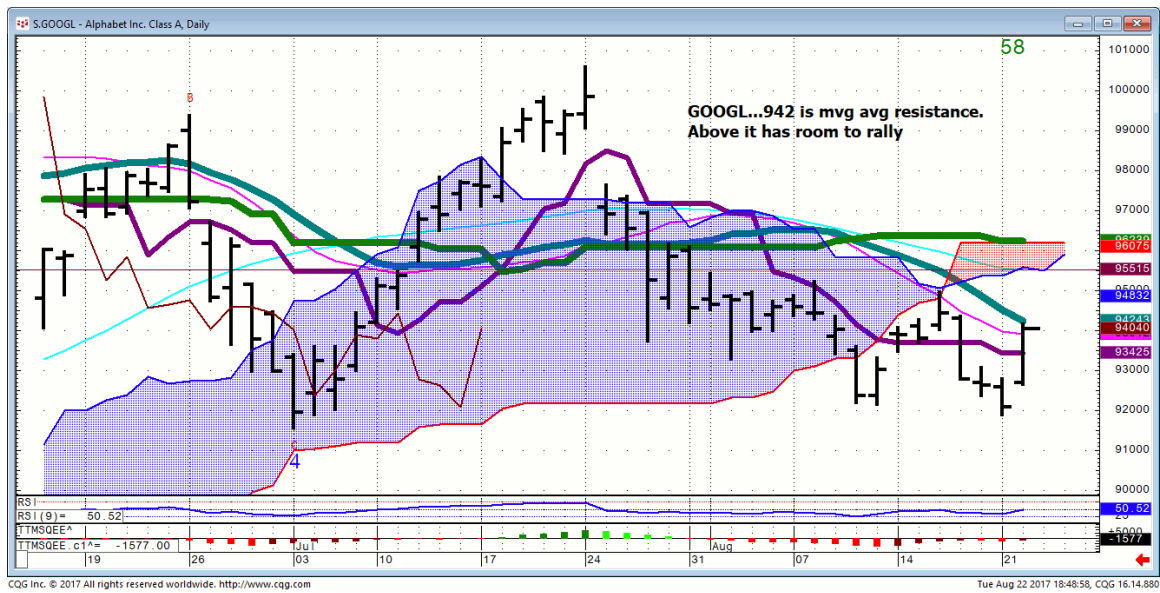
# IBB...



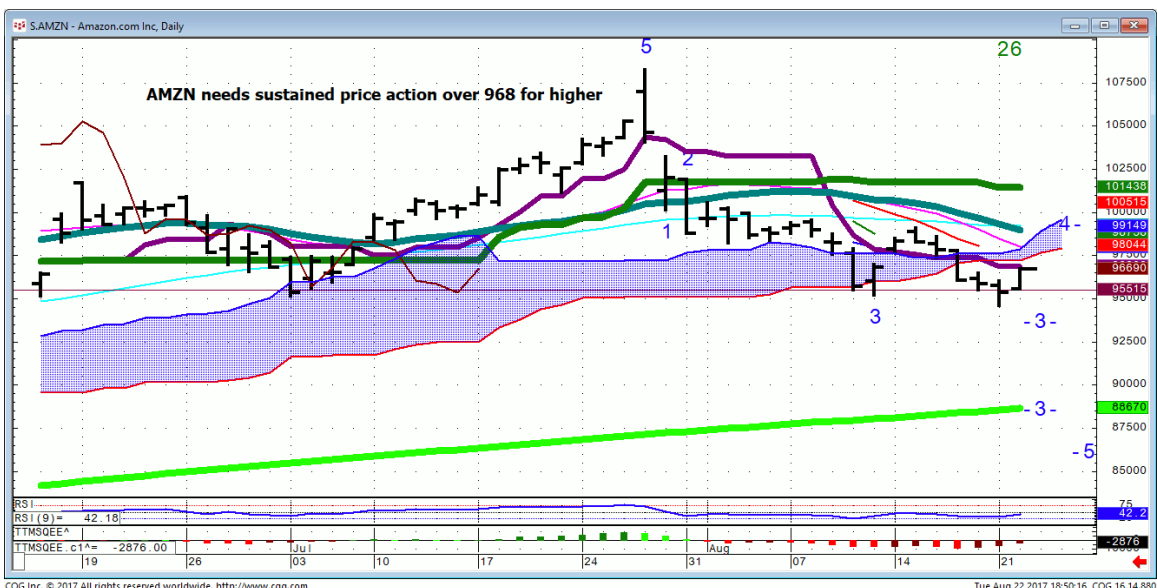
# SYMC...



# GOOGL...



# AMZN...into momentum resistance

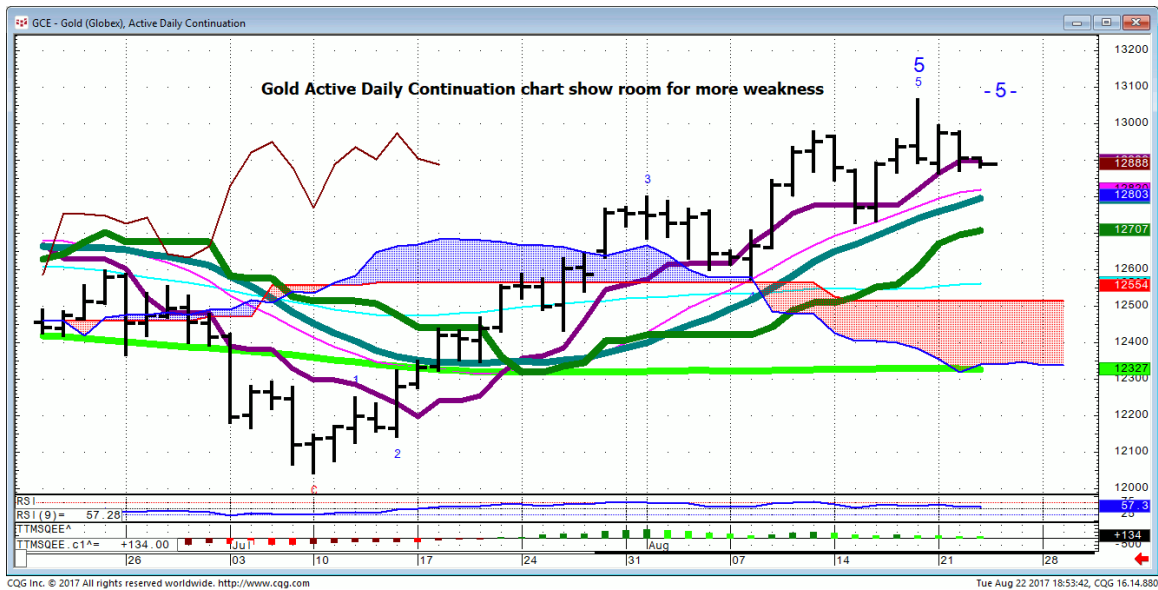


## ***Bonds***

***FX***

## Commodities

### GCEZ...Active Daily Continuation





**General Comments or Valuable Insight**

**The picture drawn comes to one conclusion.**

**We're coming into Wednesday and we do not chase late strength on a Wednesday.**

**Long only managers will have another shot at the VIX.**

**I'm still long term bullish but you can't chase this market in either direction.**

**<http://www.whitewavetradingstrategies.com/glossary/>**

**WhiteWave Trading Strategies**  
**Independent Research from the Pro's Pro**

**We Trade to Make Money**  
www.whitewavetradingstrategies.com  
info@whitewavetradingstrategies.com