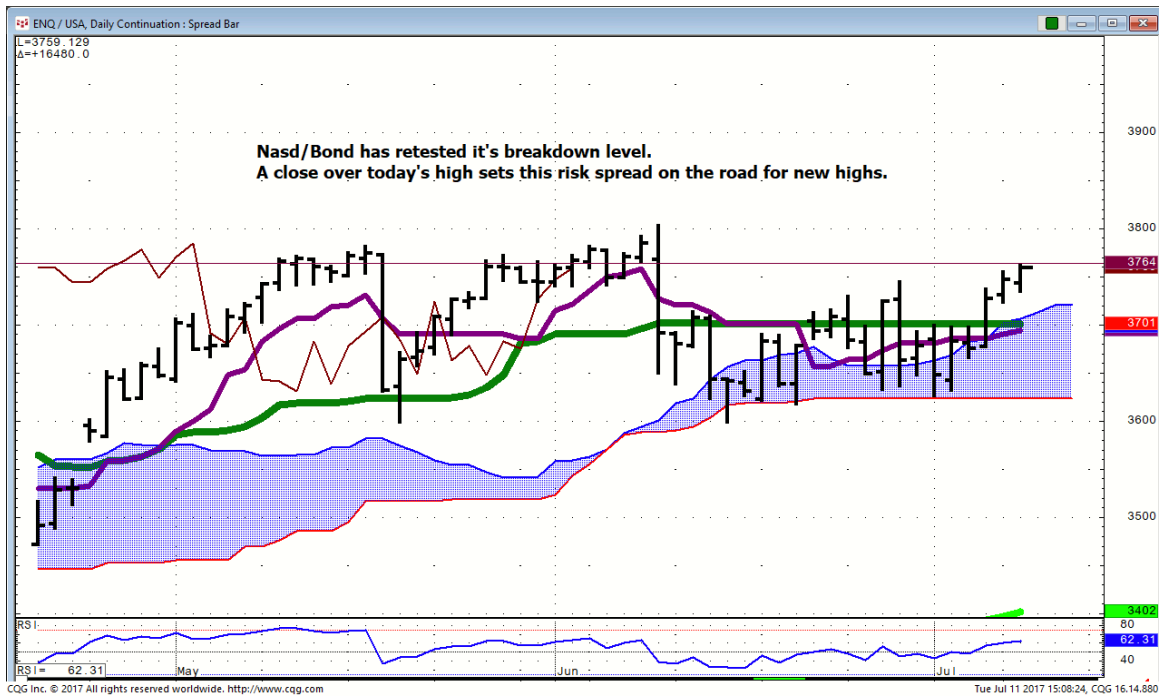




## Daily Market Intelligence

## Stocks

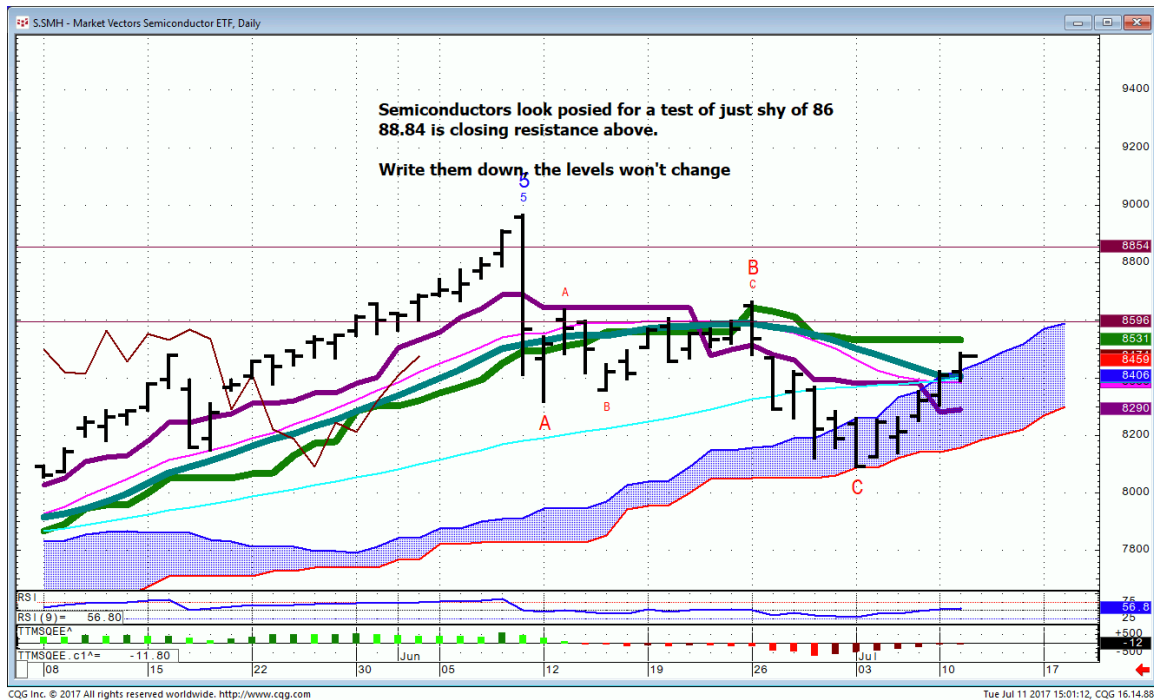
### Nasd 100/30 Yr. Bond



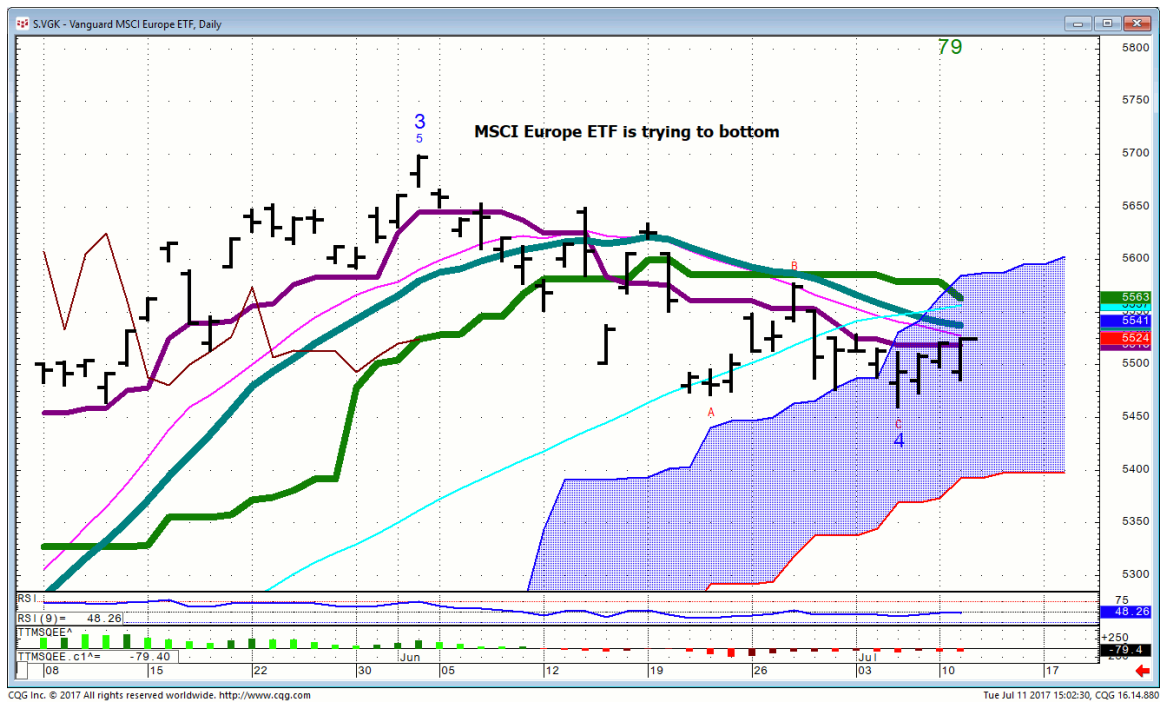
**Nasd 100...Closing above 5735 gives way to...  
5840...5900...6240**

**Write them down...they won't change.**

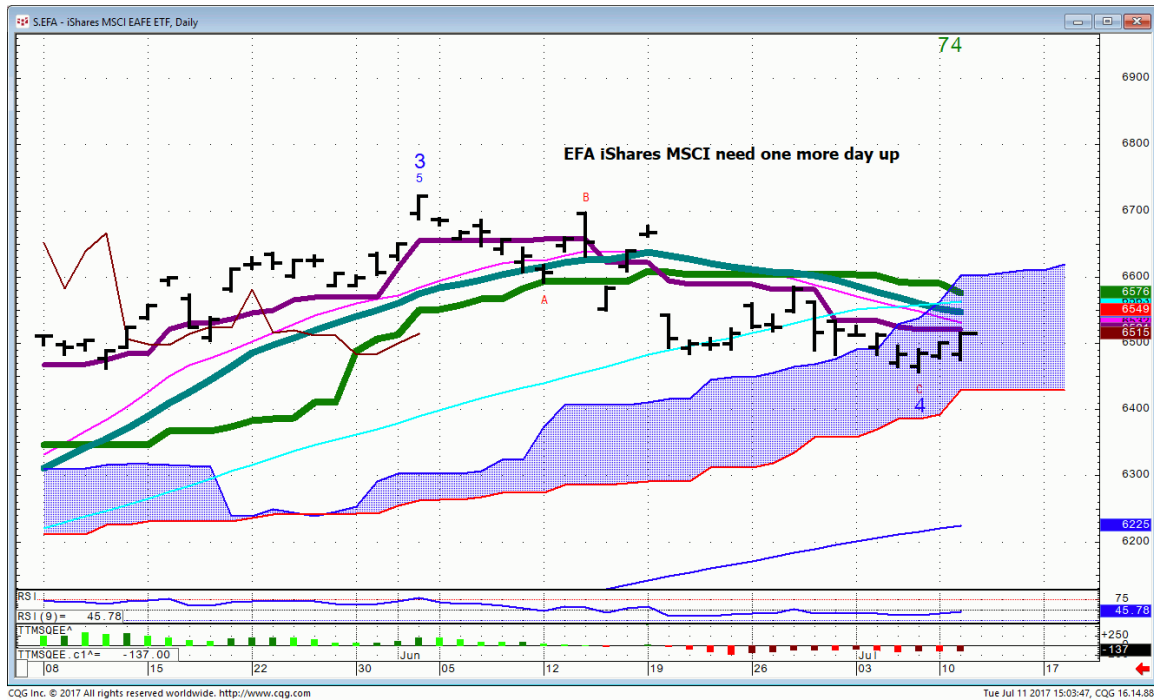
# SMH...Daily



# VGK...MSCI Europe



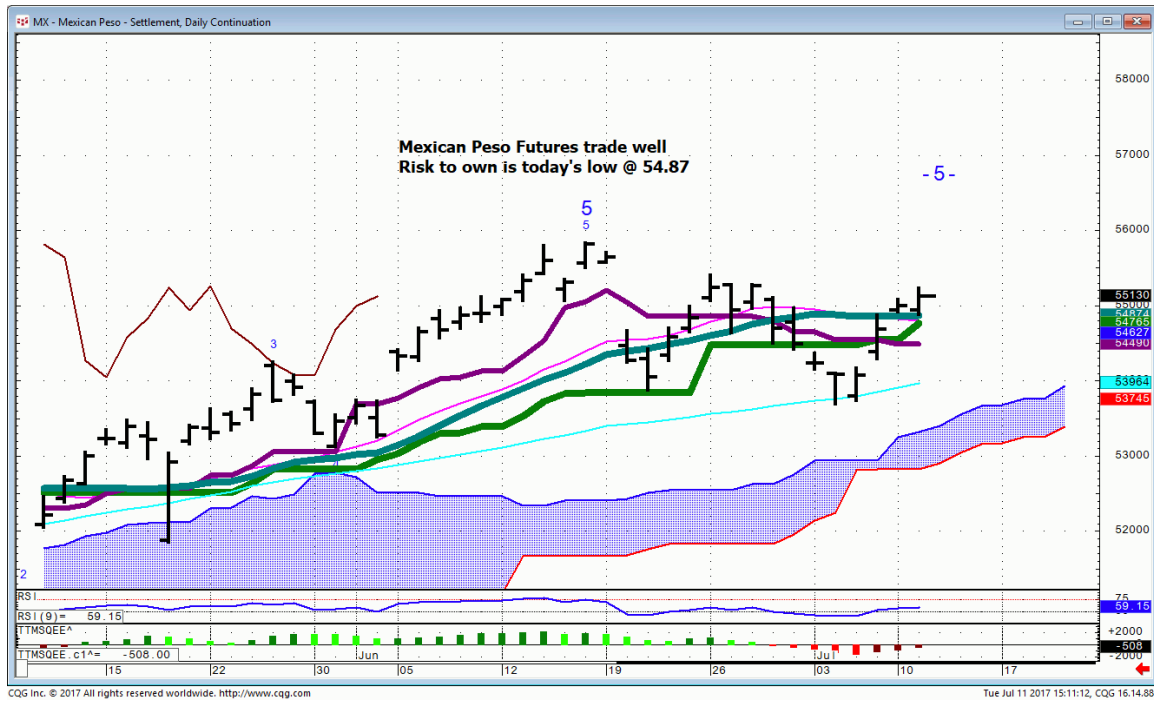
# EFA...



## ***Bonds***

FX

# MX...(U) Mexican Peso



## ***Commodities***



## **General Comments or Valuable Insight**

**The names continue to be a better trade than the Indices.**

**I will continue to highlight the names with momentum that are in play with the corresponding technical's.**

**They have been and will remain SEMI's.  
LRCX,AMD,NVDA,MU et al.**

**Trade the names I'm flogging. They've been big momentum winners.**

**IAC,LOGI,MSI are all showing bullish formations**

**Bullish DJI**

**Neutral Spu's**

**Neutral Nasd 100..Bullish with one more up day**

**Neutral DAX & Nikkei**

**Neutral All Bond markets**

**Risk Spreads are Bullish**

**<http://www.whitewavetradingstrategies.com/glossary/>**

**WhiteWave Trading Strategies  
Independent Research from the Pro's Pro**

**We Trade to Make Money**

**[www.whitewavetradingstrategies.com](http://www.whitewavetradingstrategies.com)**

**[info@whitewavetradingstrategies.com](mailto:info@whitewavetradingstrategies.com)**

