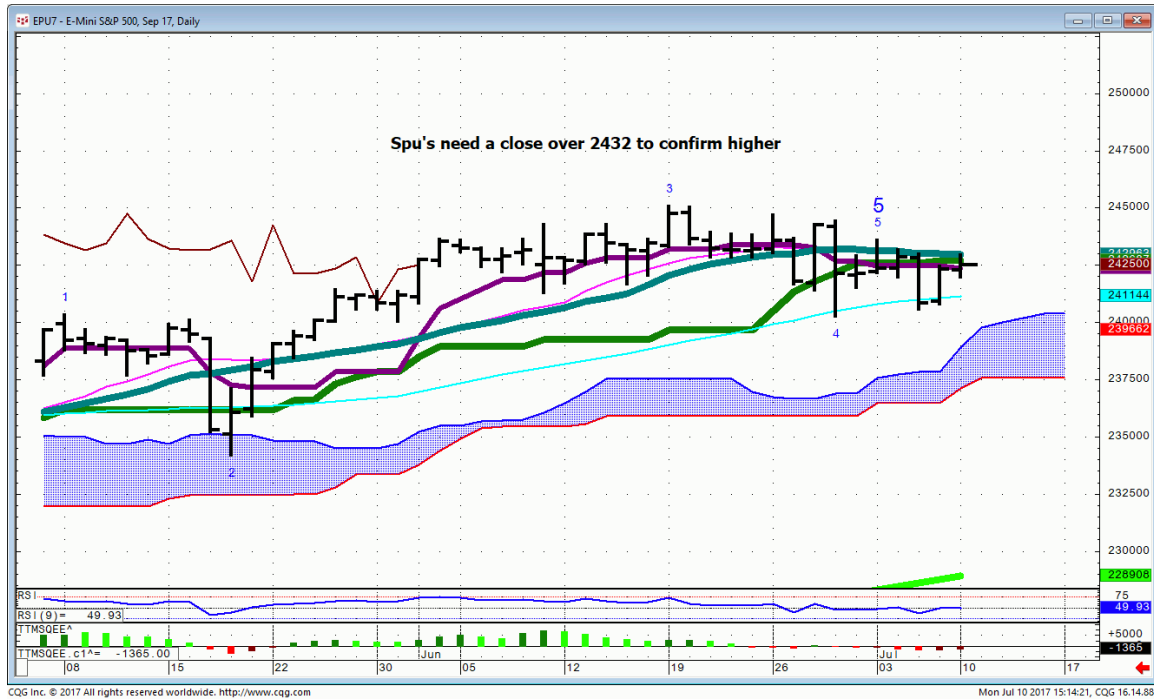




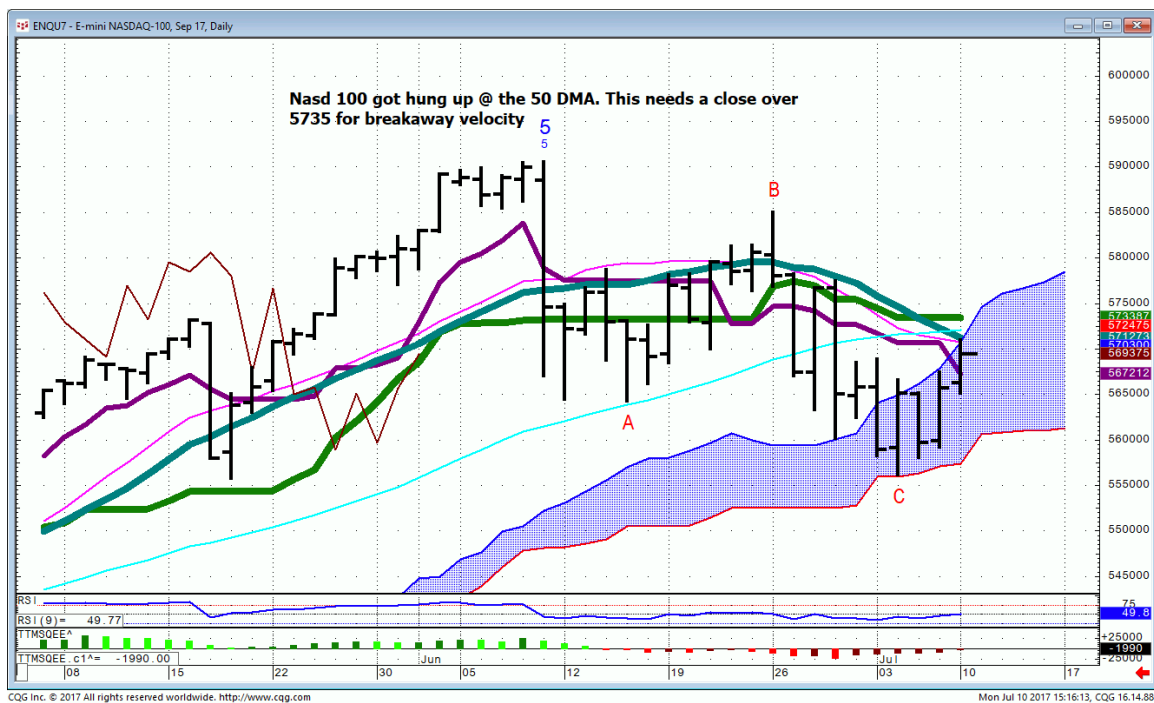
Daily Market Intelligence

Stocks

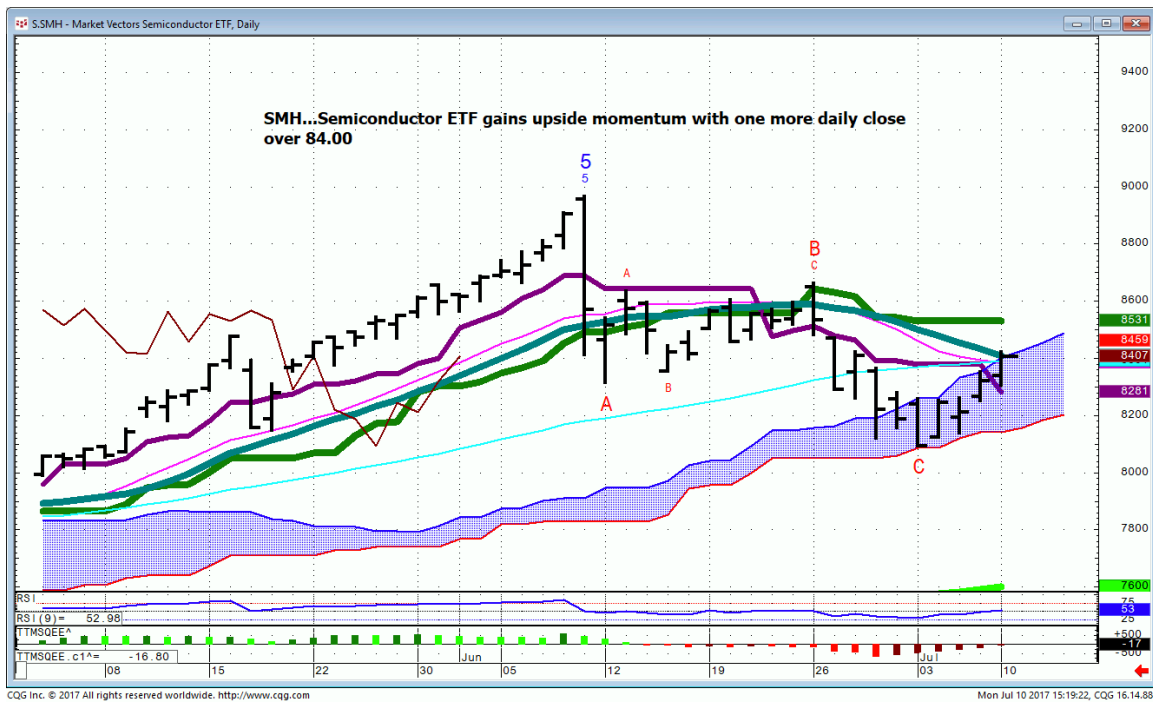
Spu's...



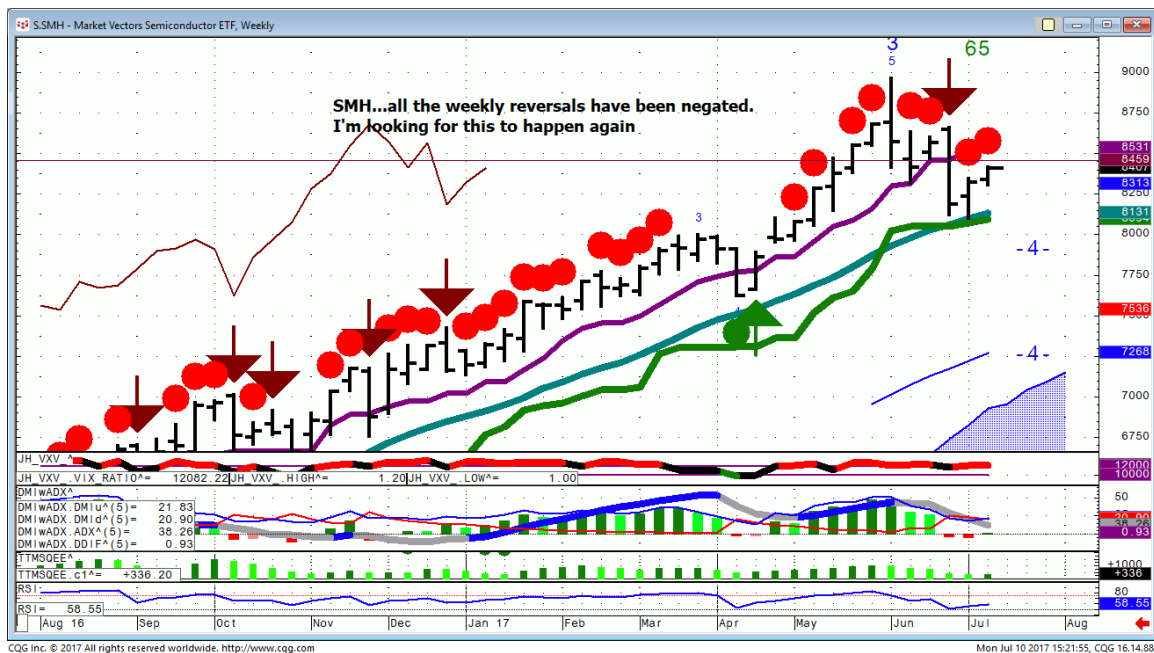
Nasd 100... Closes over 5735 are needed for a breakout targeting the Old high of 5900.



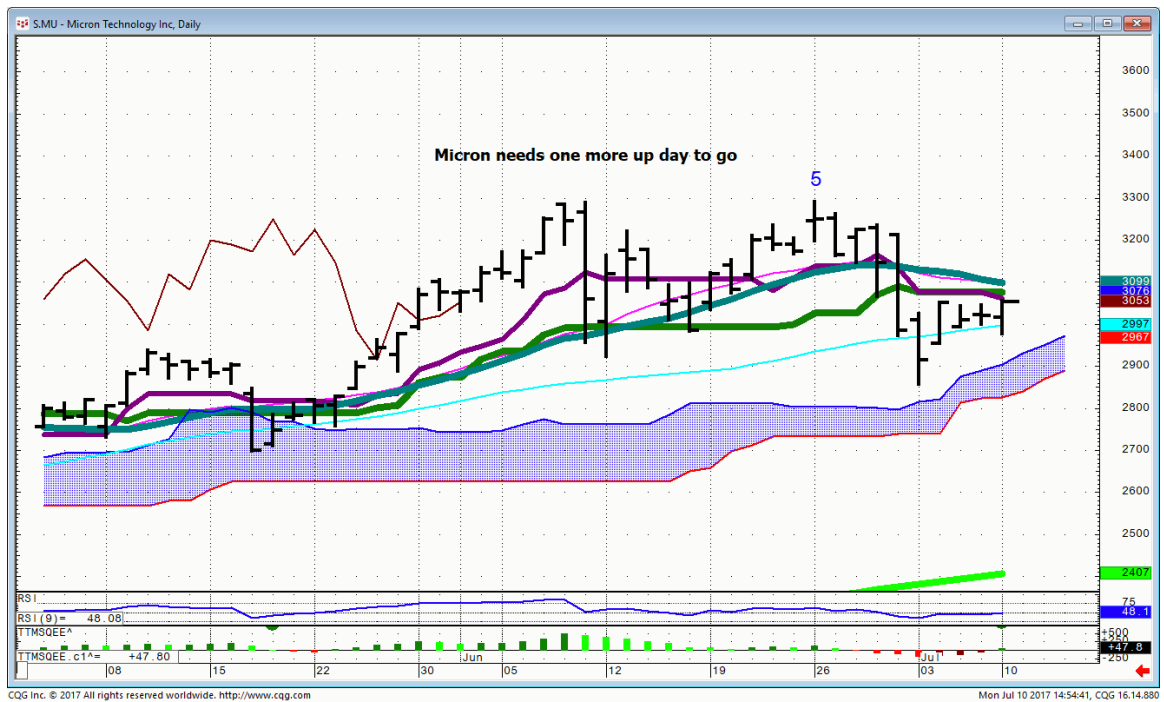
SMH...



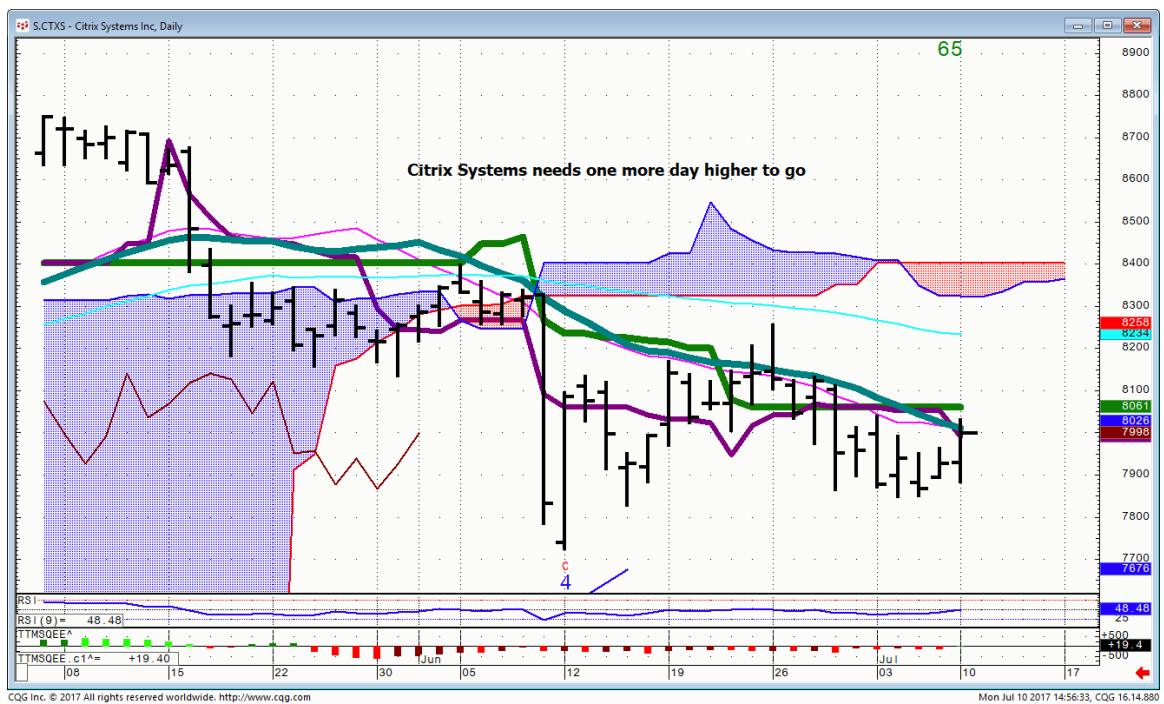
SMH...Weekly..for the entire rally the bearish reversals have been negated which led to new highs.



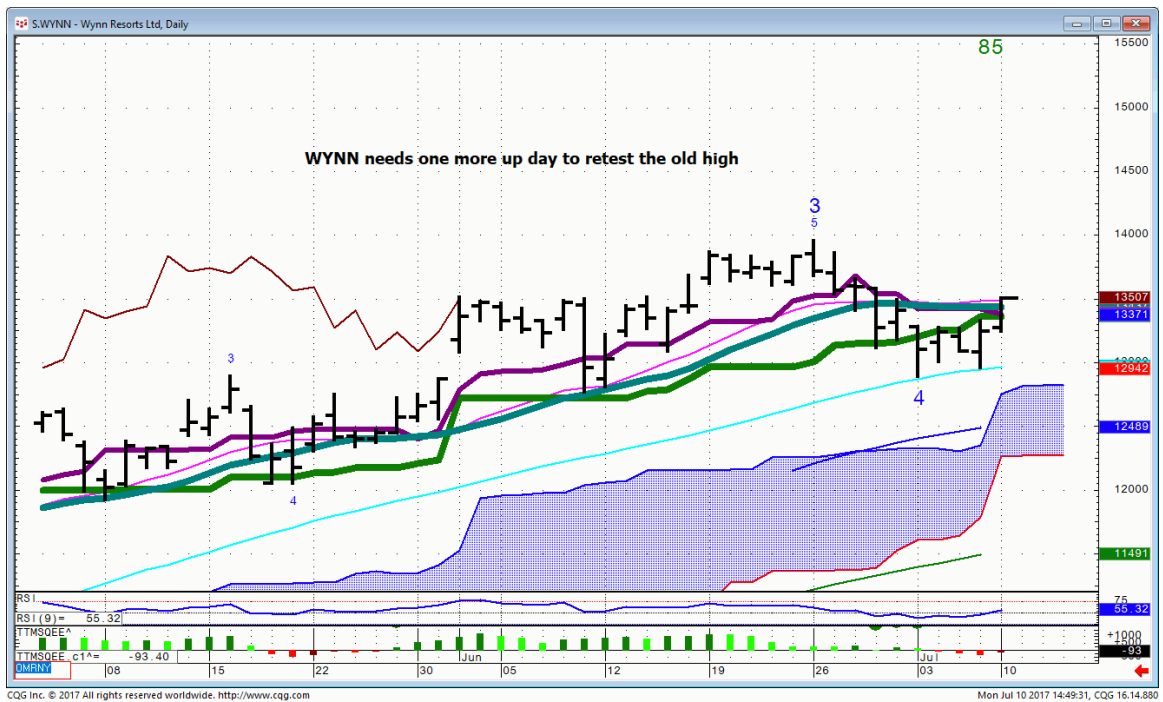
MU...



CTXS...



WYNN...



Bonds

FX

Commodities

General Comments or Valuable Insight

The names continue to be a better trade than the Indices.

I will continue to highlight the names with momentum that are in play with the corresponding technical's.

**Bullish DJI
Neutral Spu's
Neutral Nasd 100
Neutral DAX & Nikkei
Neutral All Bond markets**

Risk Spreads are Bullish

Spu's might not be sorted out until Bank earnings at the end of the week.

**XME..was strong all day closing just over its 200 DMA.
The weekly pattern is neutral closing just over its 200 WMA.**

Not sure how to interpret it.

I believe the Indices will eventually resolve themselves to the upside. Time will tell.

<http://www.whitewavetradingstrategies.com/glossary/>

**WhiteWave Trading Strategies
Independent Research from the Pro's Pro**

**We Trade to Make Money
www.whitewavetradingstrategies.com**

info@whitewavetradingstrategies.com