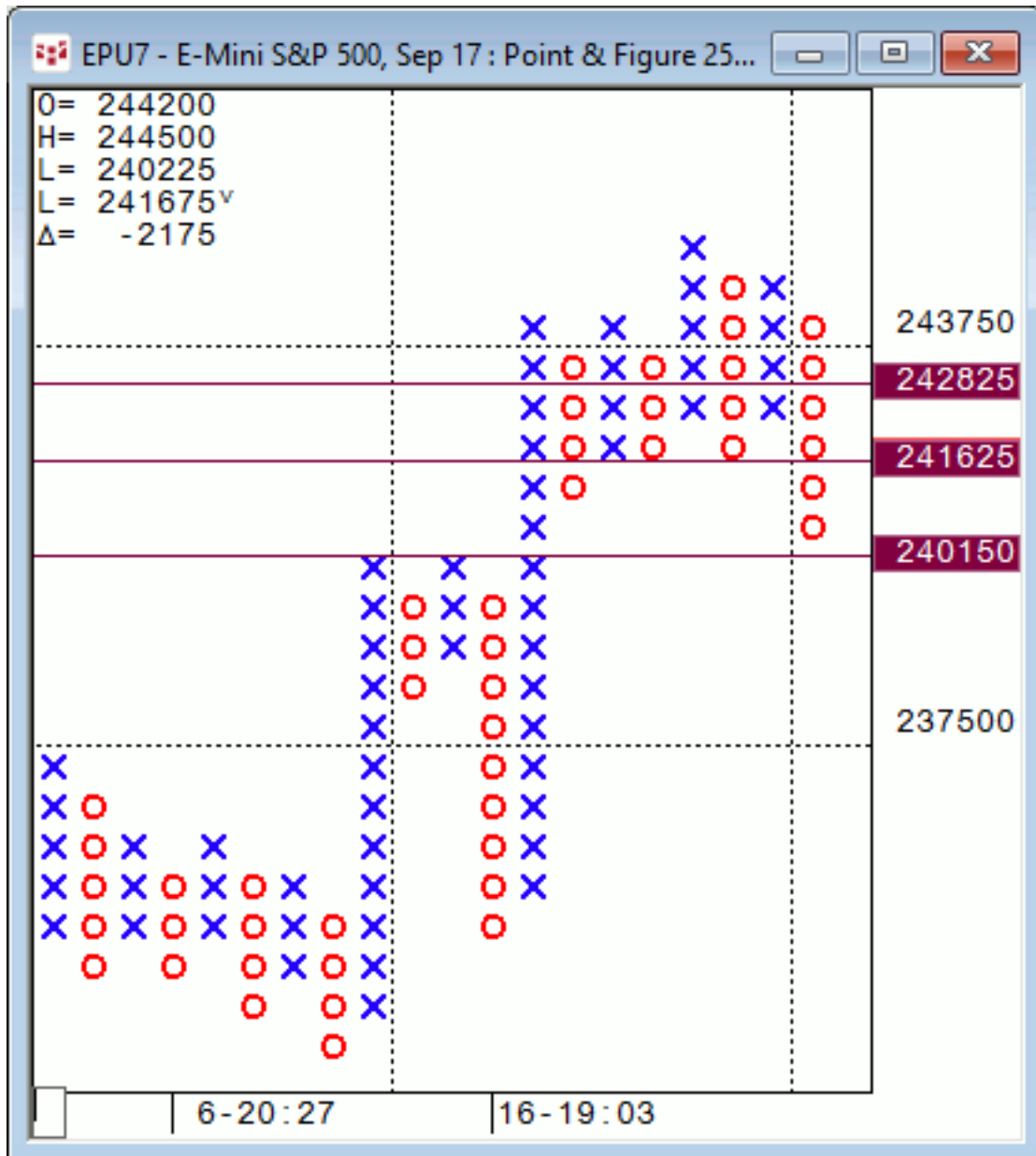




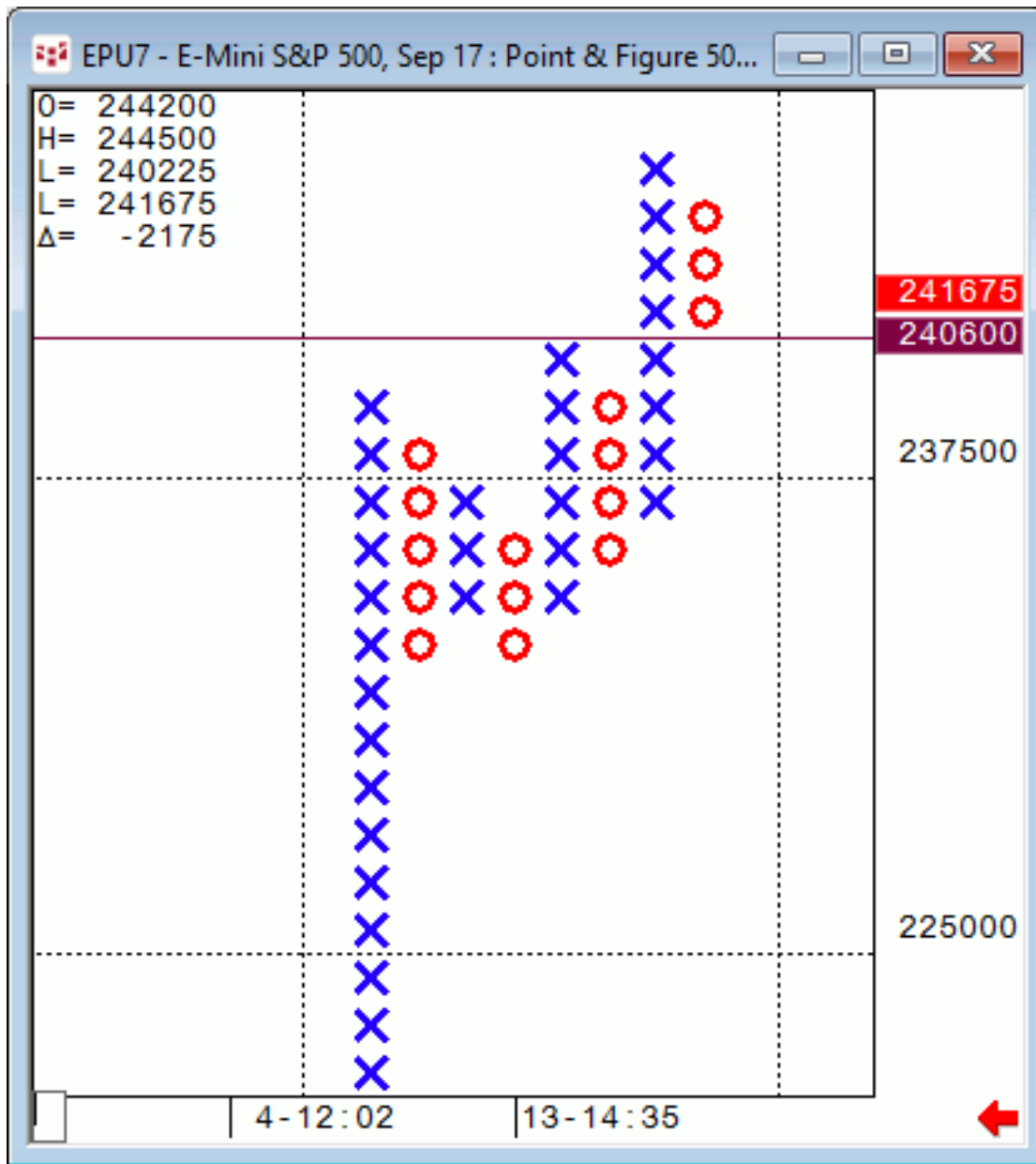
Daily Market Intelligence

Stocks

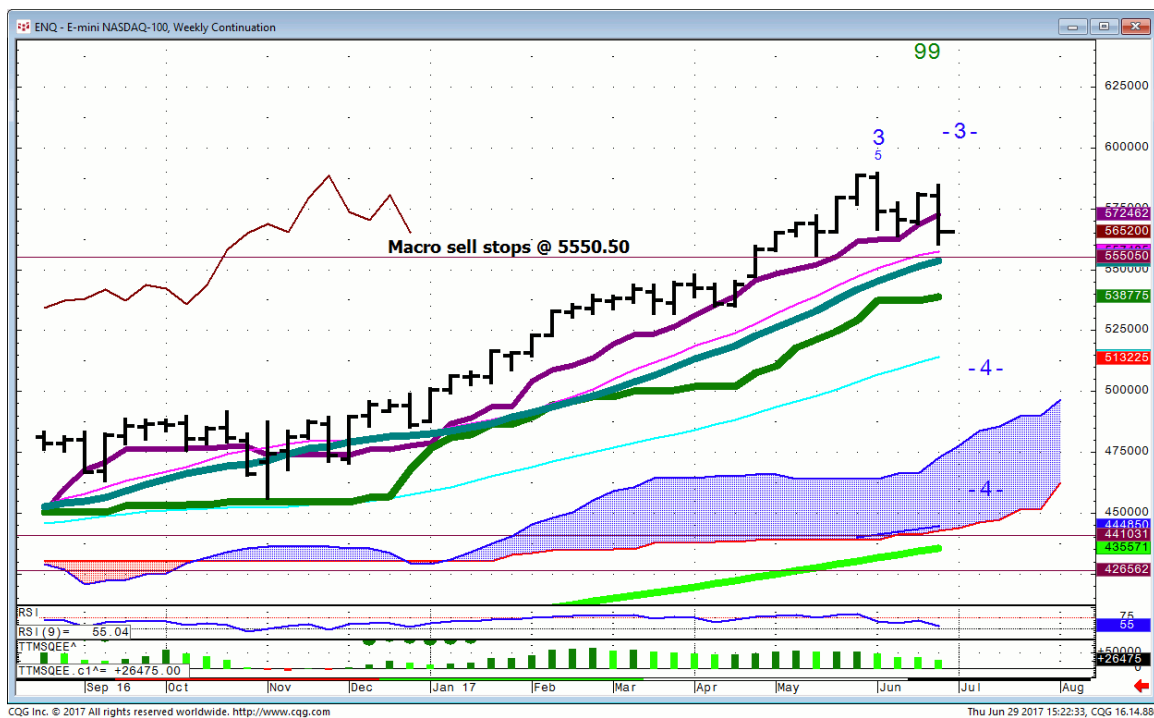
Spu's... 25X3 P&F. hit the first objective @ 2404



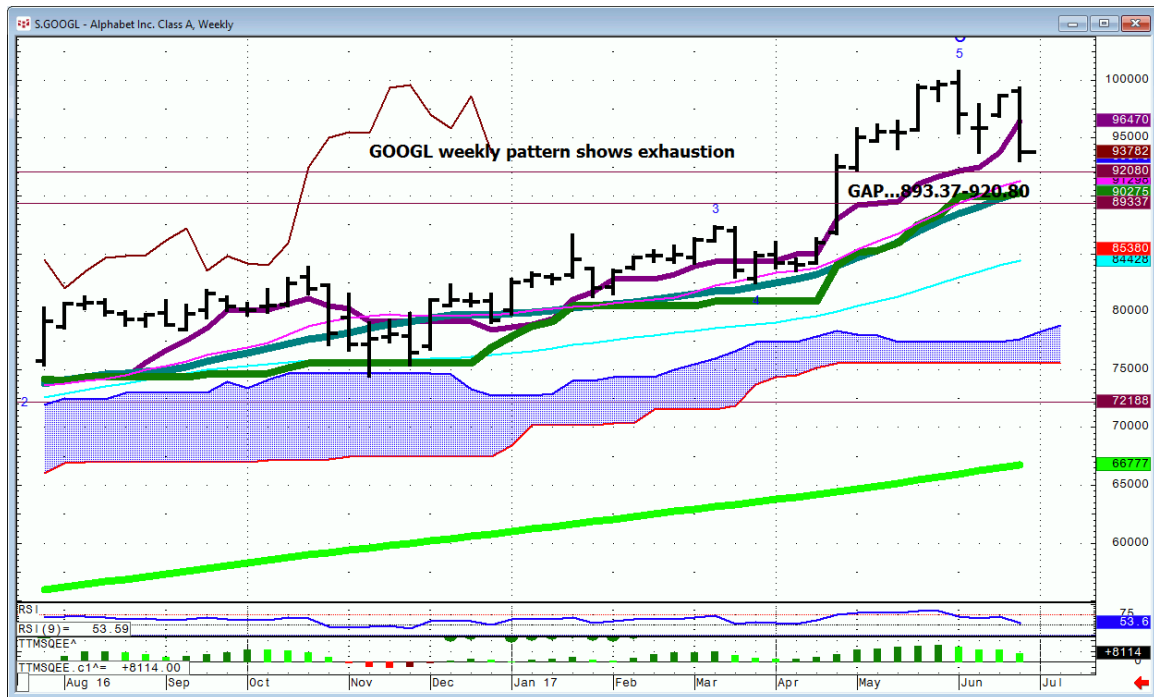
Spu's...50X3 P&F ..put in the reversal. It's all the initial downside I was looking for.



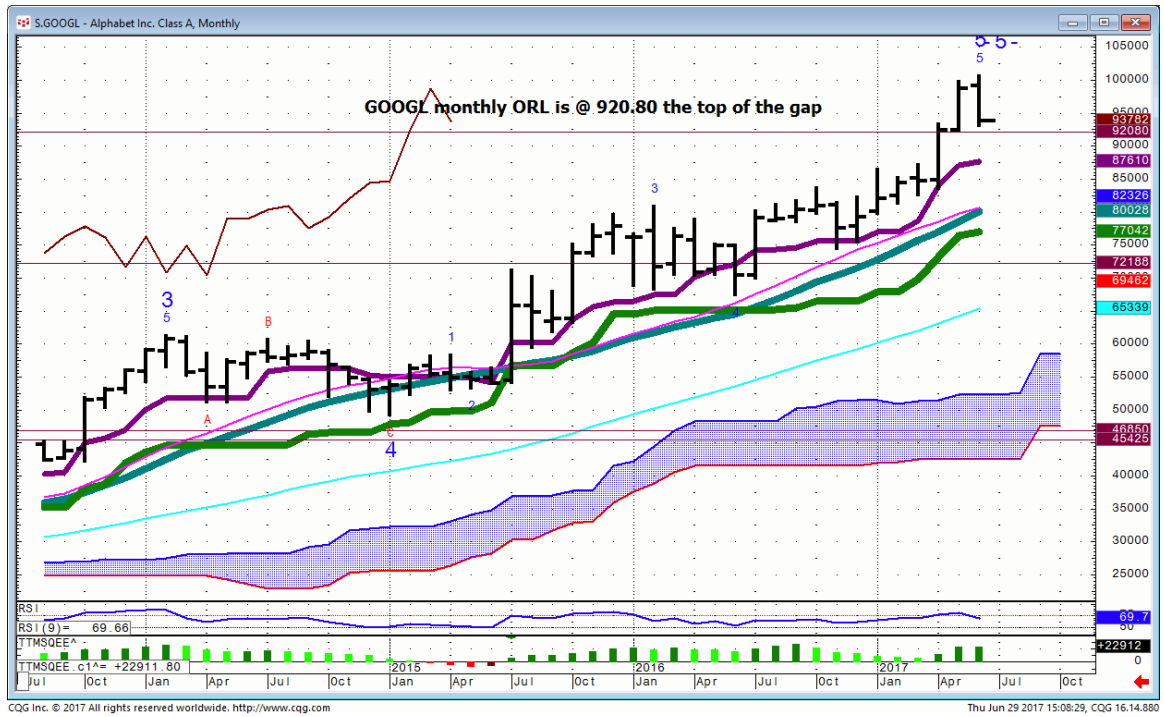
Nasd 100...Weekly...a close over 5683.75 is needed to avoid an ORL week.



GOOGL...weekly



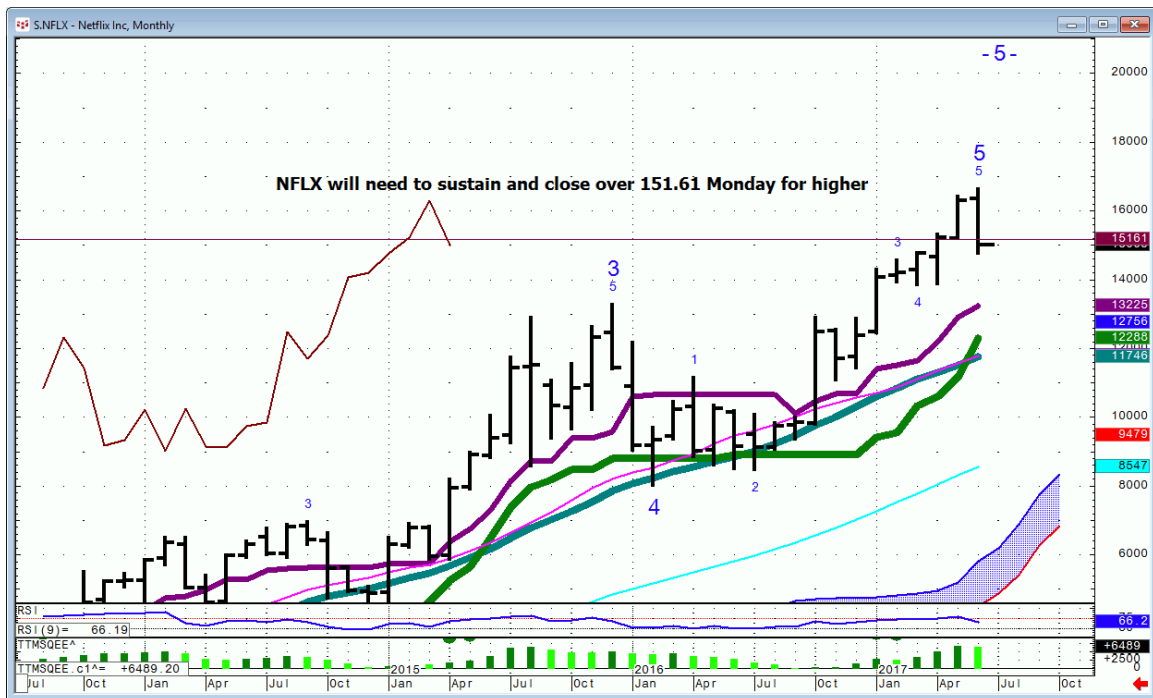
GOOGL...Monthly



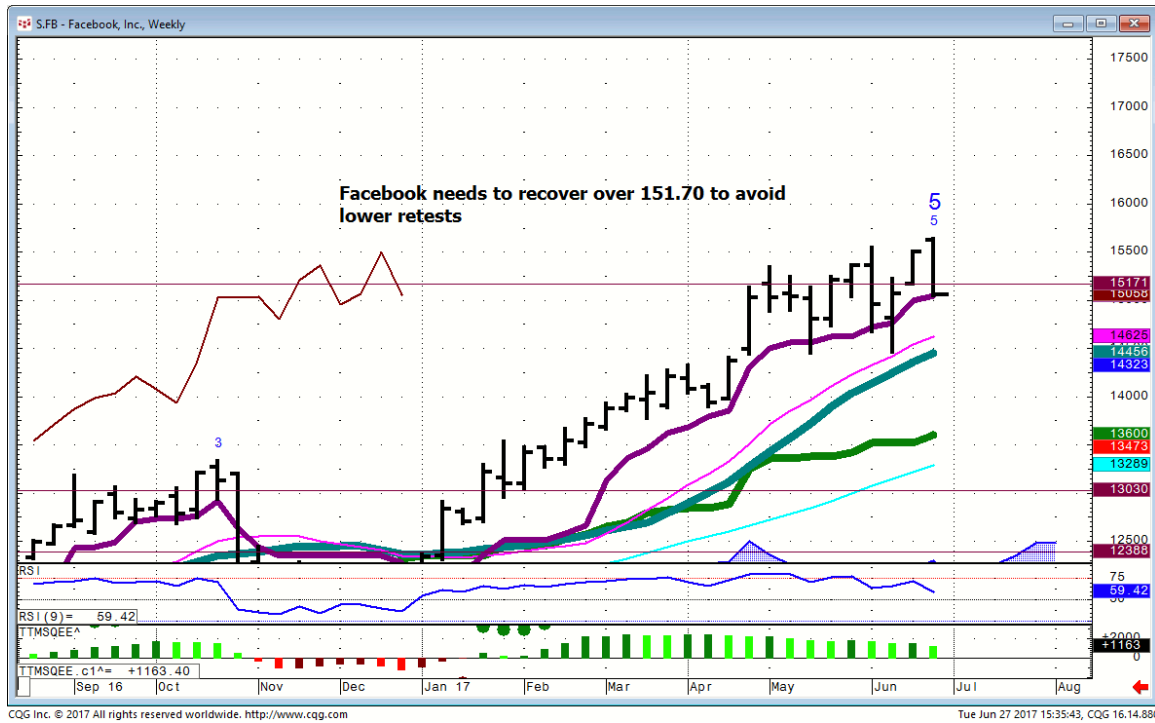
AAPL...Monthly



NFLX...



FB....



Bonds

FX

Commodities

General Comments or Valuable Insight

Not everything looks bad.

Natgas infrastructure names have bottomed.

I'll be taking a hard look at trade location in that sector

Near-term Game Plan... Keep it simple!

Use tomorrow's closes as the near term pivot in whatever instrument you trade.

Just ask your self if it's higher or lower on the qtr and go with the flow.

I will be out of office from 10:00 A.M. CDT 6/29/17-7/4/17

The next research will be sent Tuesday 7/04/17.

Time for a head brake from the algorithmic mayhem.

Hey Santelli want a new rant?

Bring back the humanoids!

<http://www.whitewavetradingstrategies.com/glossary/>

WhiteWave Trading Strategies
Independent Research from the Pro's Pro

We Trade to Make Money
www.whitewavetradingstrategies.com
info@whitewavetradingstrategies.com