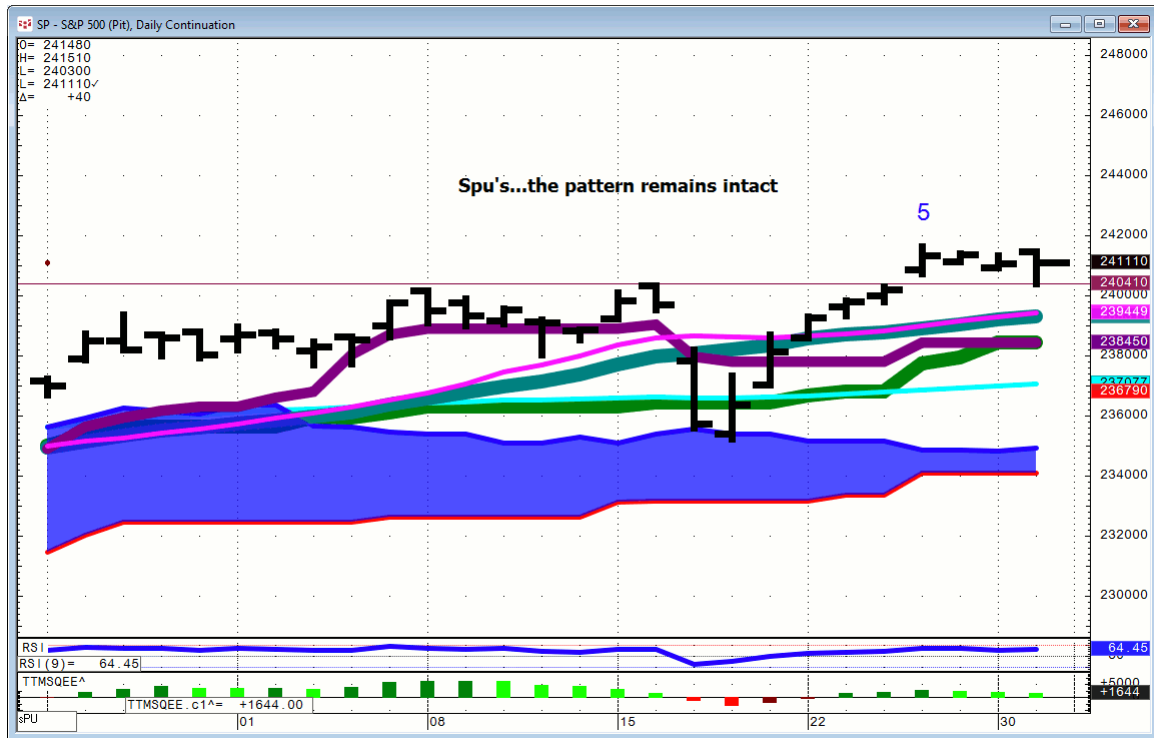




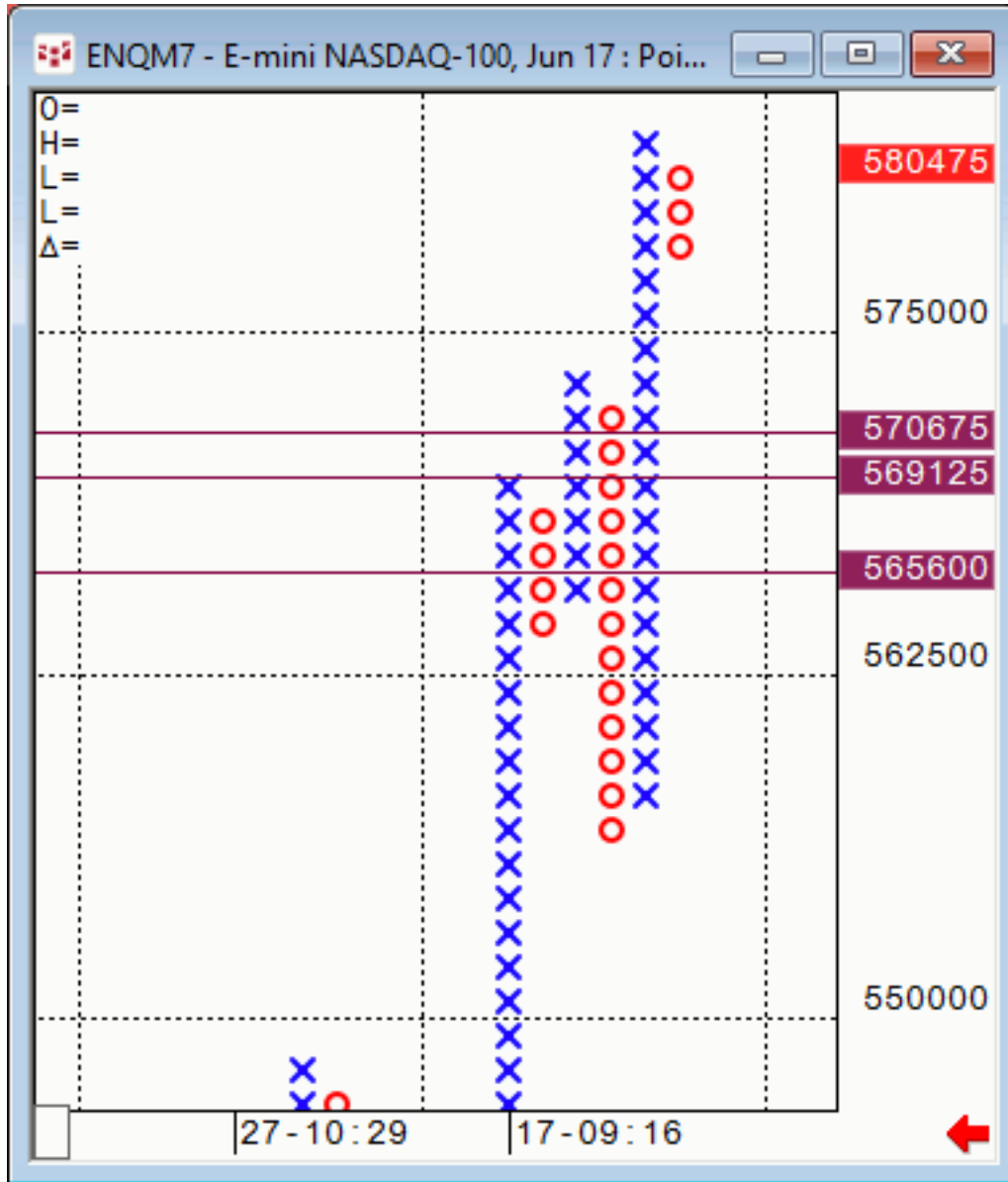
## Daily Market Intelligence

# Stocks

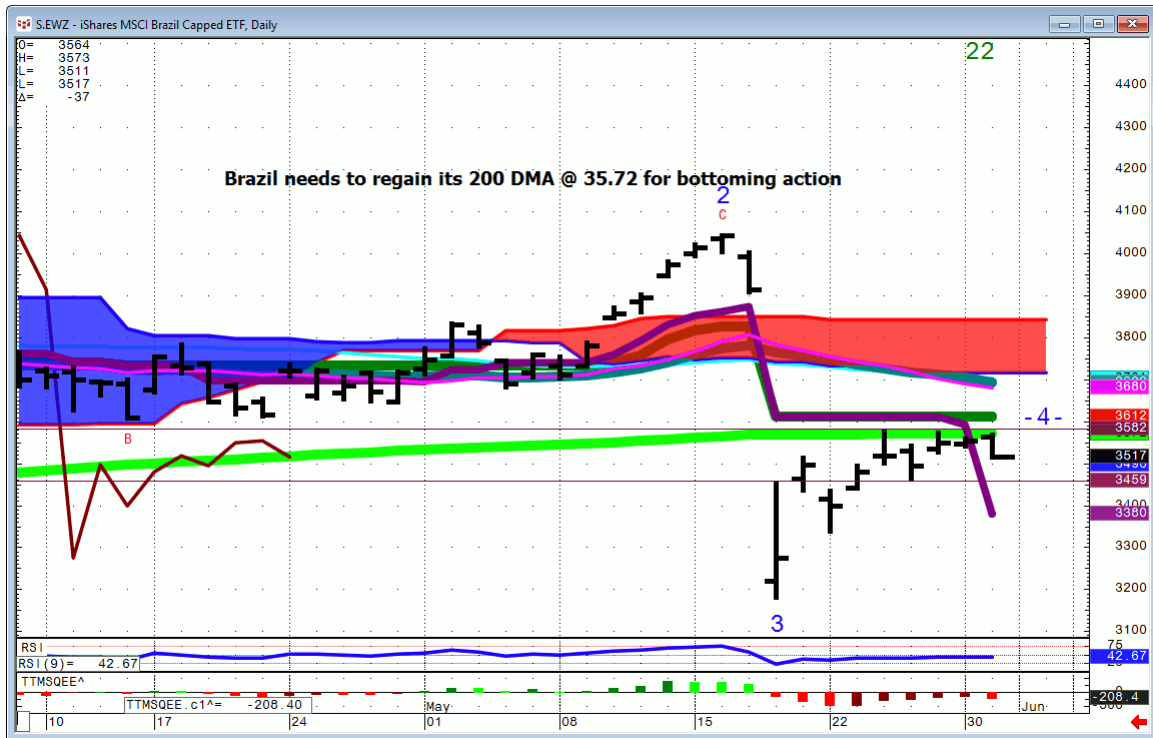
## SPU...



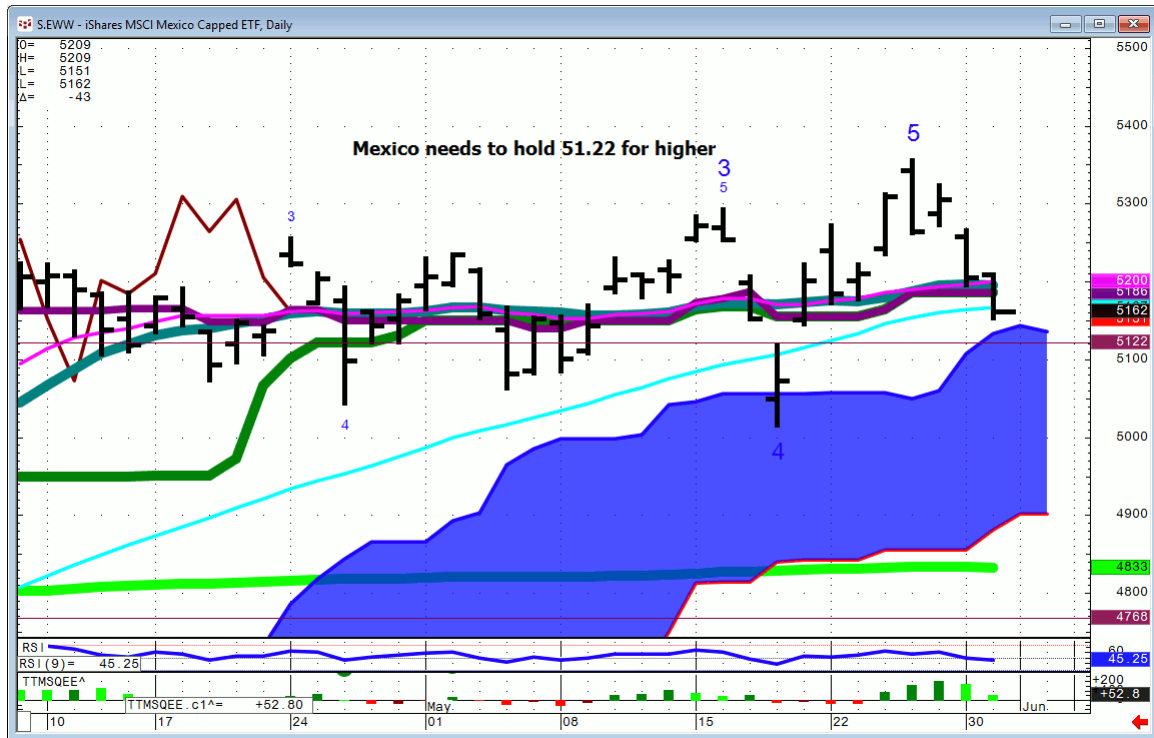
**Nasd 100...much over 5805 and this turns up.**



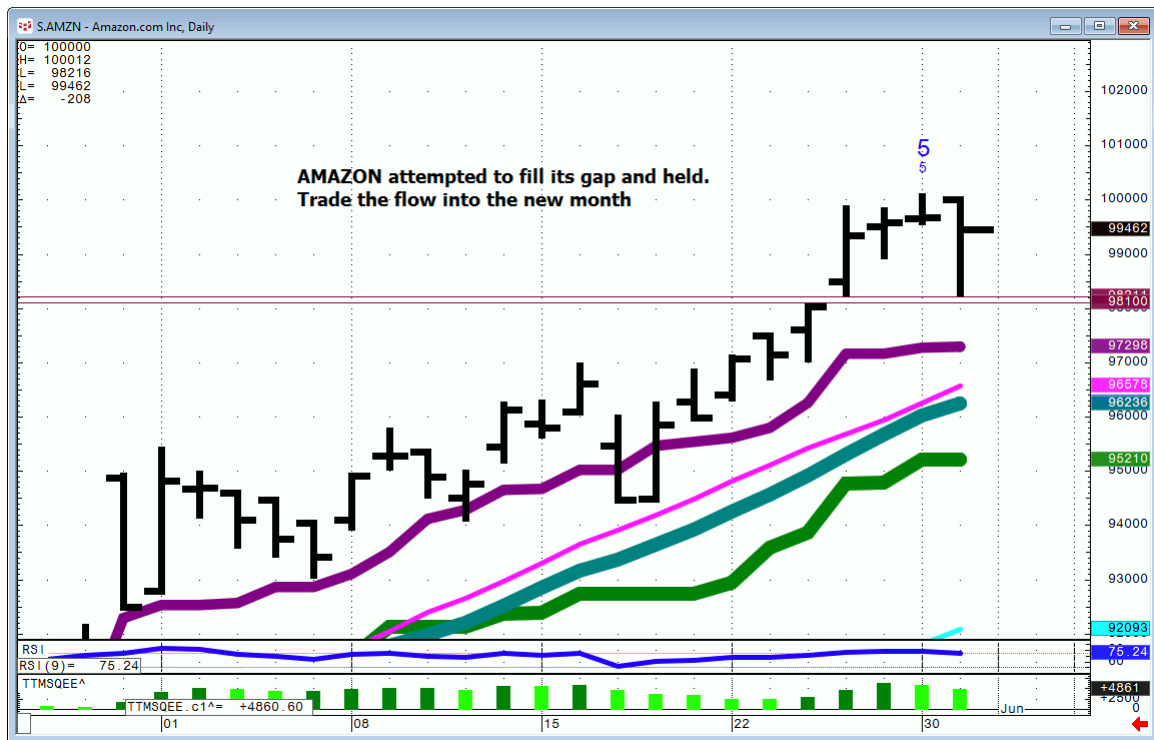
# EWZ...



**EWV...**



# AMZN...





## ***Bonds***

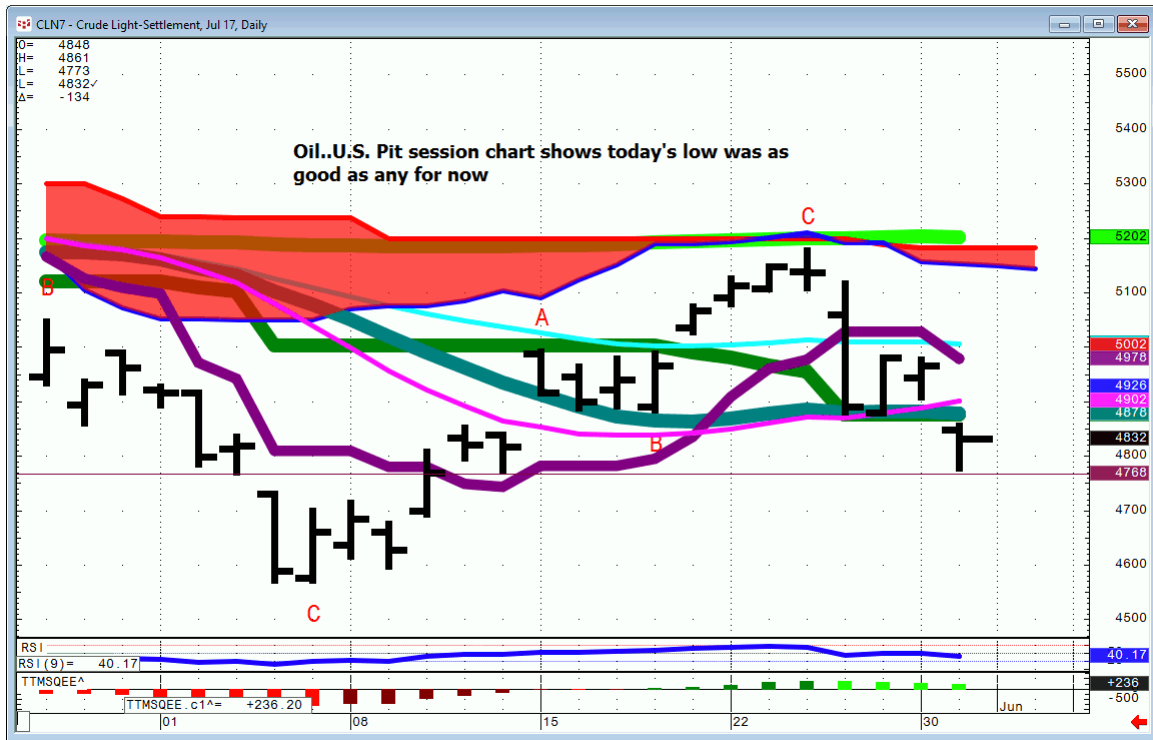
FX

# GBP/USD...

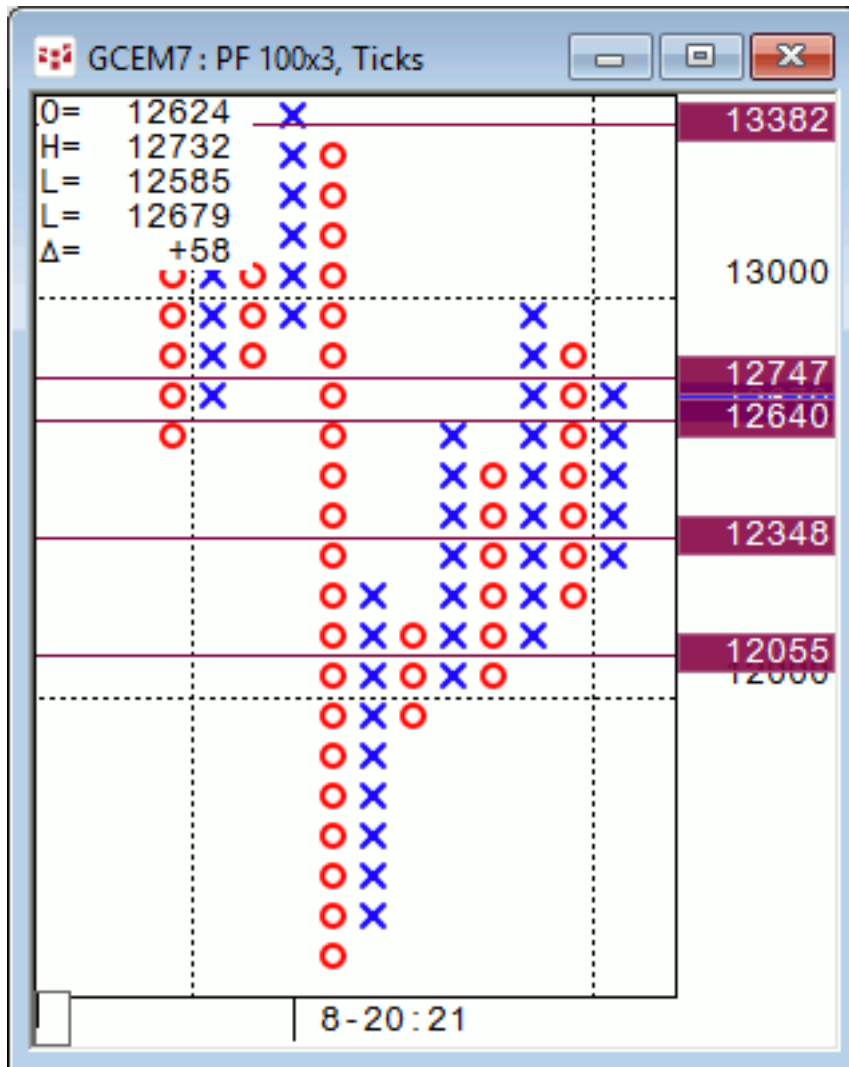


# Commodities

## OIL...



**Gold...**traded into the top of value on the Long-term P&F



**General Comments or Valuable Insight**

**The Index plungers once again received a free colonic at the end of day.**

**Trade instruments on their own merits.**

**If you want to pick a high put on Jerry Jeff and hope.**

**The Financials & Energy patch continue to be under pressure.**

**Use today's closes as the near term pivots.  
Just ask yourself "is it higher or lower on the month"**

**Trade accordingly.**

**<http://www.whitewavetradingstrategies.com/glossary/>**

**WhiteWave Trading Strategies  
Independent Research from the Pro's Pro**

**We Trade to Make Money  
www.whitewavetradingstrategies.com  
info@whitewavetradingstrategies.com**