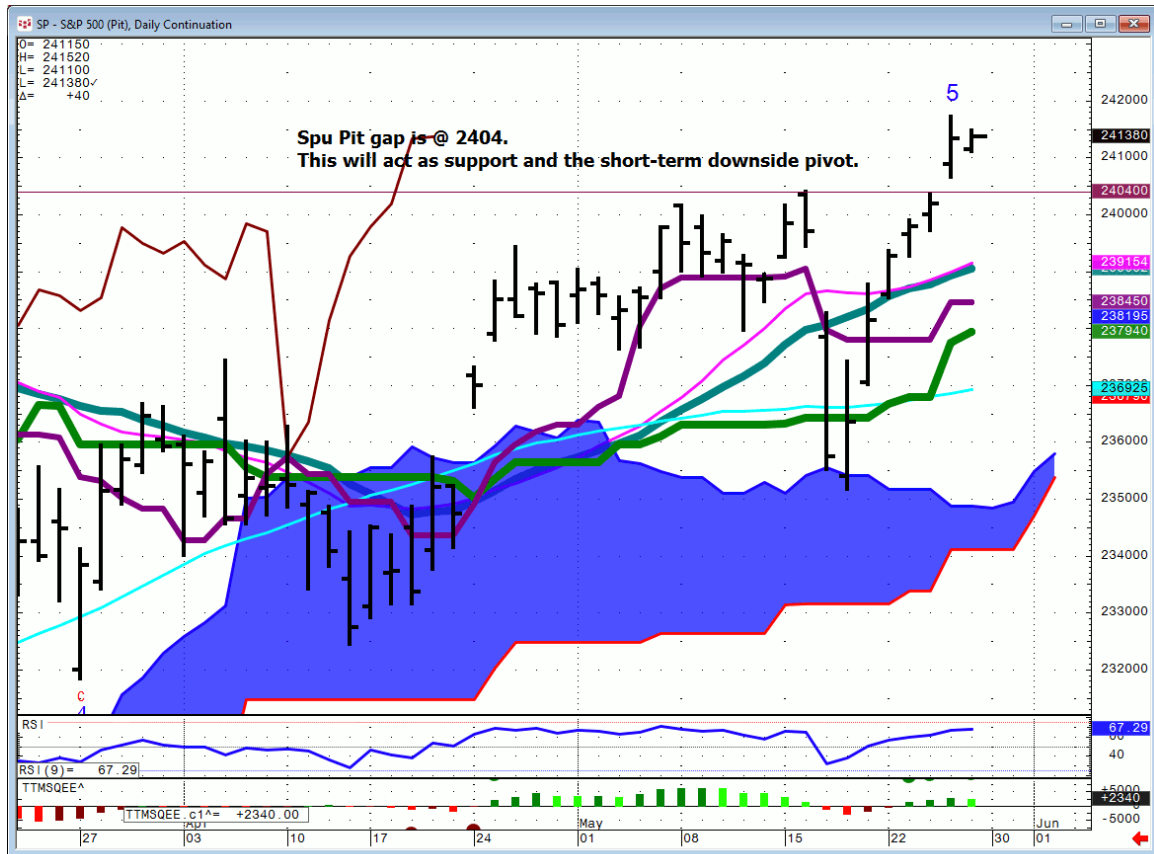




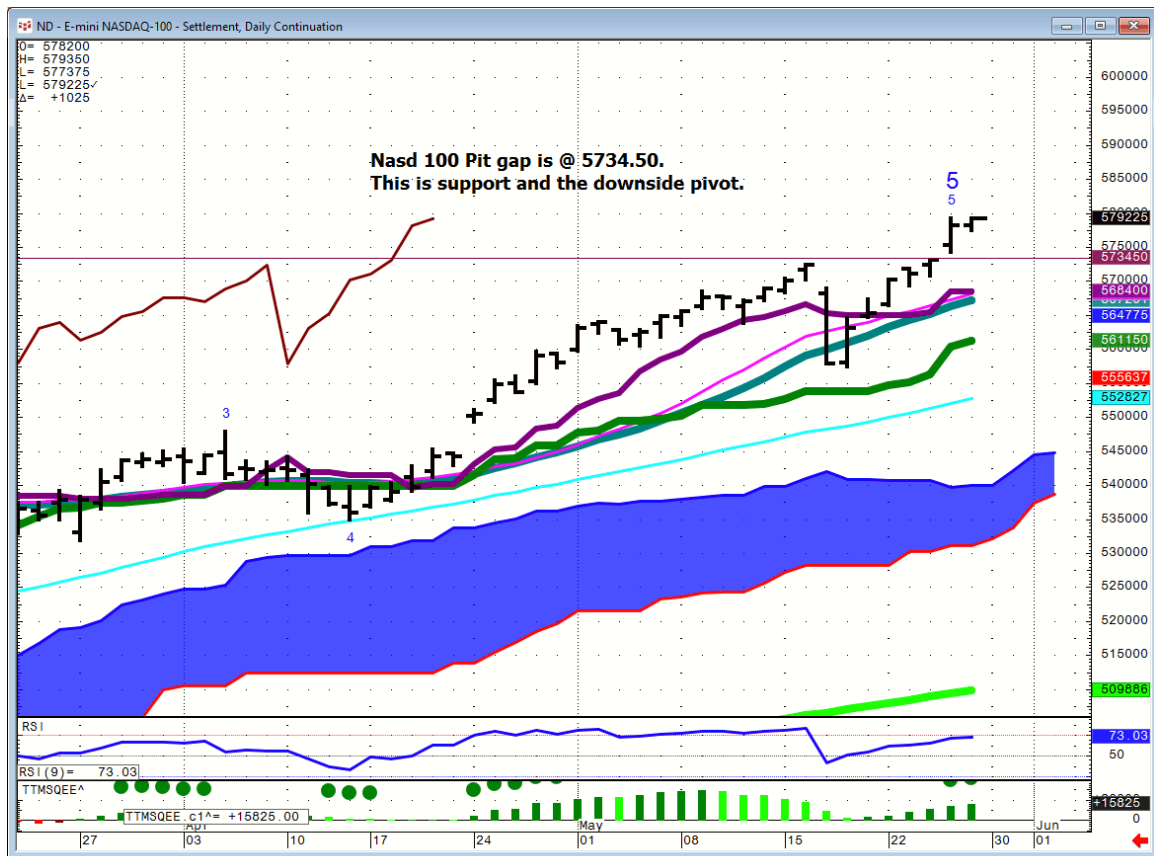
Daily Market Intelligence

Stocks

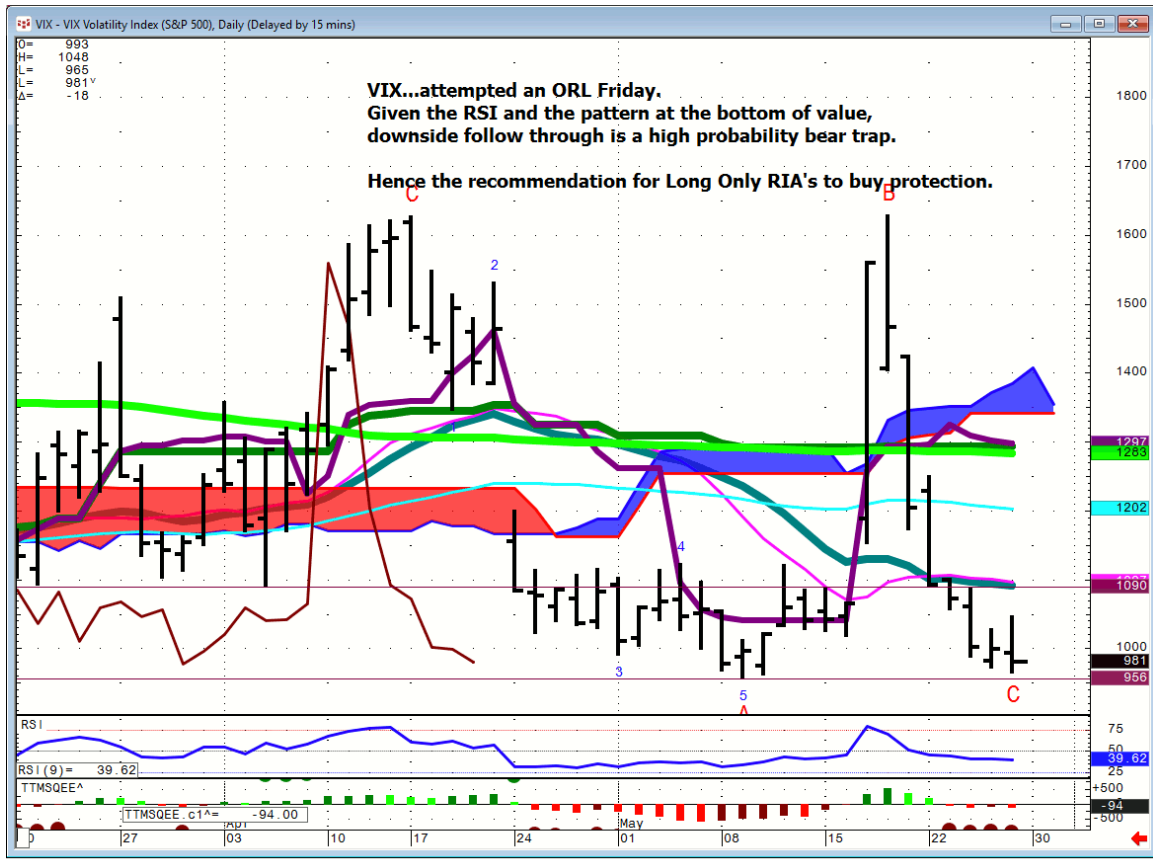
Spu...



Nasd 100...

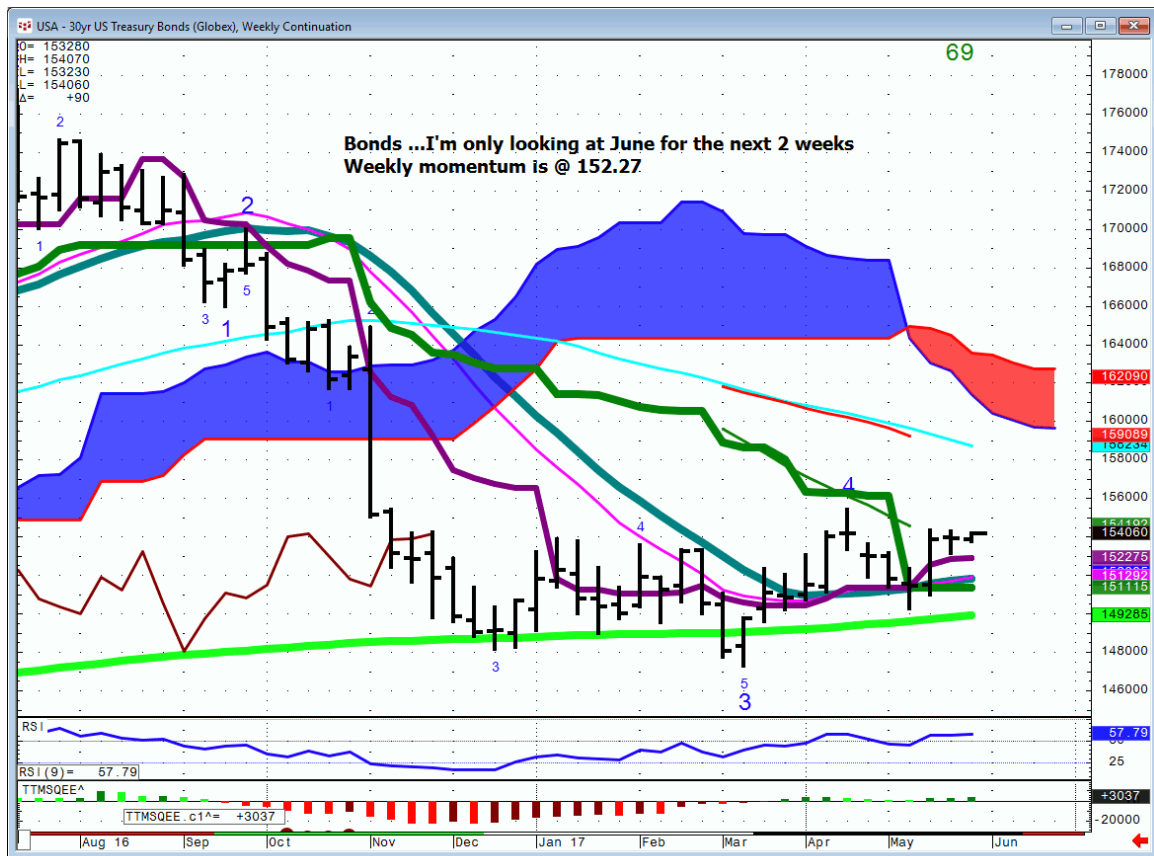


VIX...



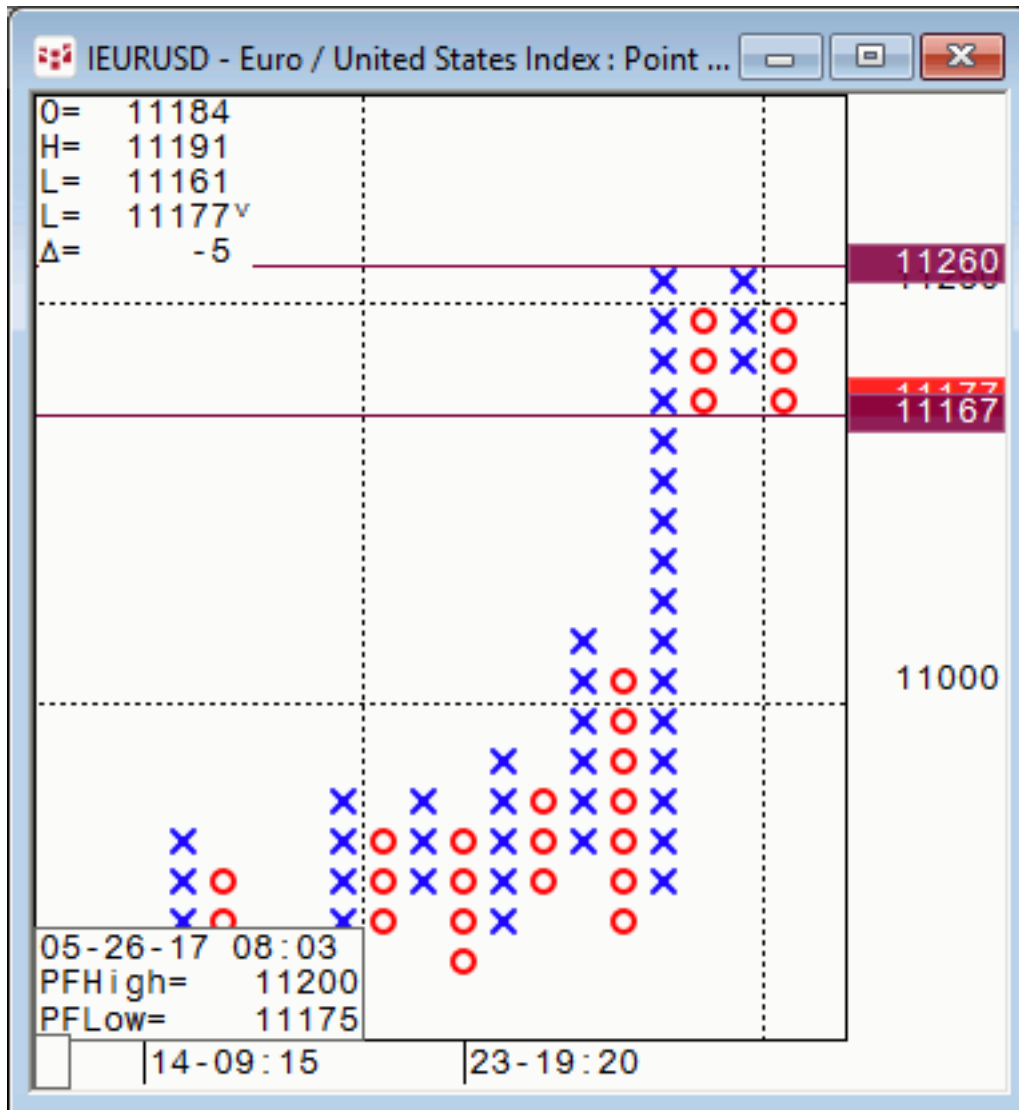
Bonds

30 Yr. Bonds...weekly



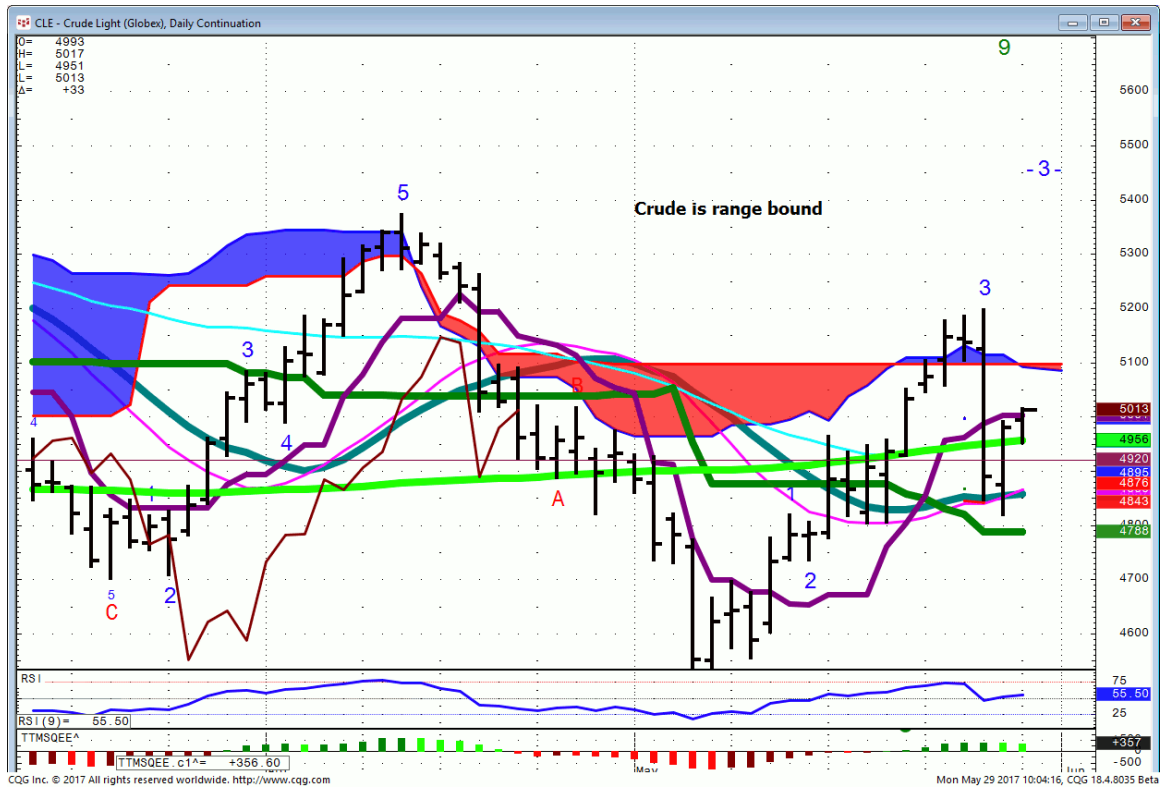
FX

EURO..25X3 Point & Figure...the range is clear

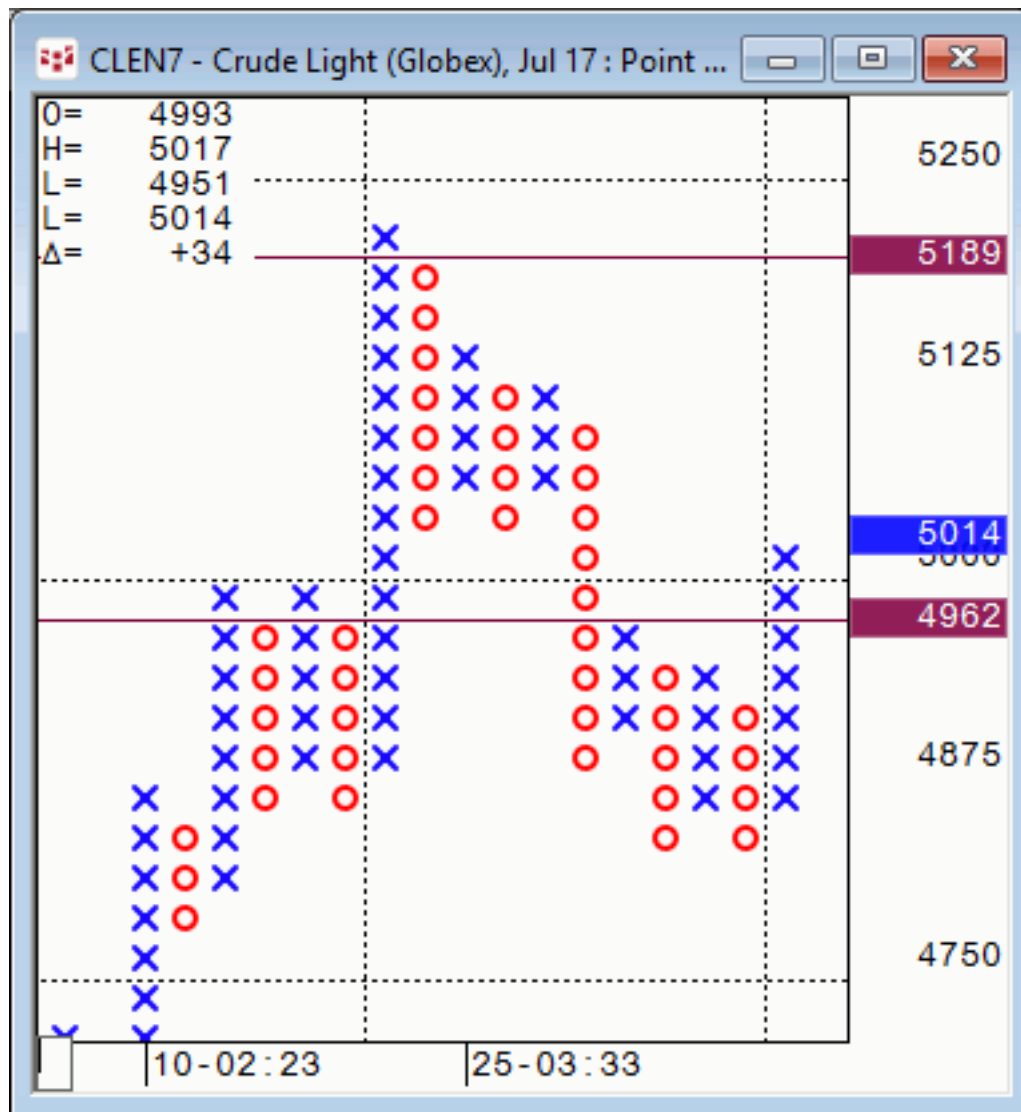


Commodities

Oil..



Crude..25X3 Point & Figure



General Comments or Valuable Insight

Two trading days away from June and the beginning of qtrly contract rollovers.

**Sept.(U) Bunds trade at a 200 Point premium to June.
Sept 30 Yr. Bonds trade at a 1-1/2 Point discount to June.**

The list goes on.

Be aware of what you are trading and which month is leading.

This is when there is a very big difference in an individual instrument off a daily chart, or whether you follow a daily Continuation, or an Active Daily which vwap's the highest volume contract into the front month.

For those of you new to my service I look at all three but I defer to a daily continuation until the last few days of an expiring contract.

I do not write Sept. levels until the June contracts become highly illiquid. The bitter end.

Front month rules until it doesn't.

It's a pretty quiet weekend.

<http://www.whitewavetradingstrategies.com/glossary/>

**WhiteWave Trading Strategies
Independent Research from the Pro's Pro**

We Trade to Make Money

www.whitewavetradingstrategies.com

info@whitewavetradingstrategies.com

