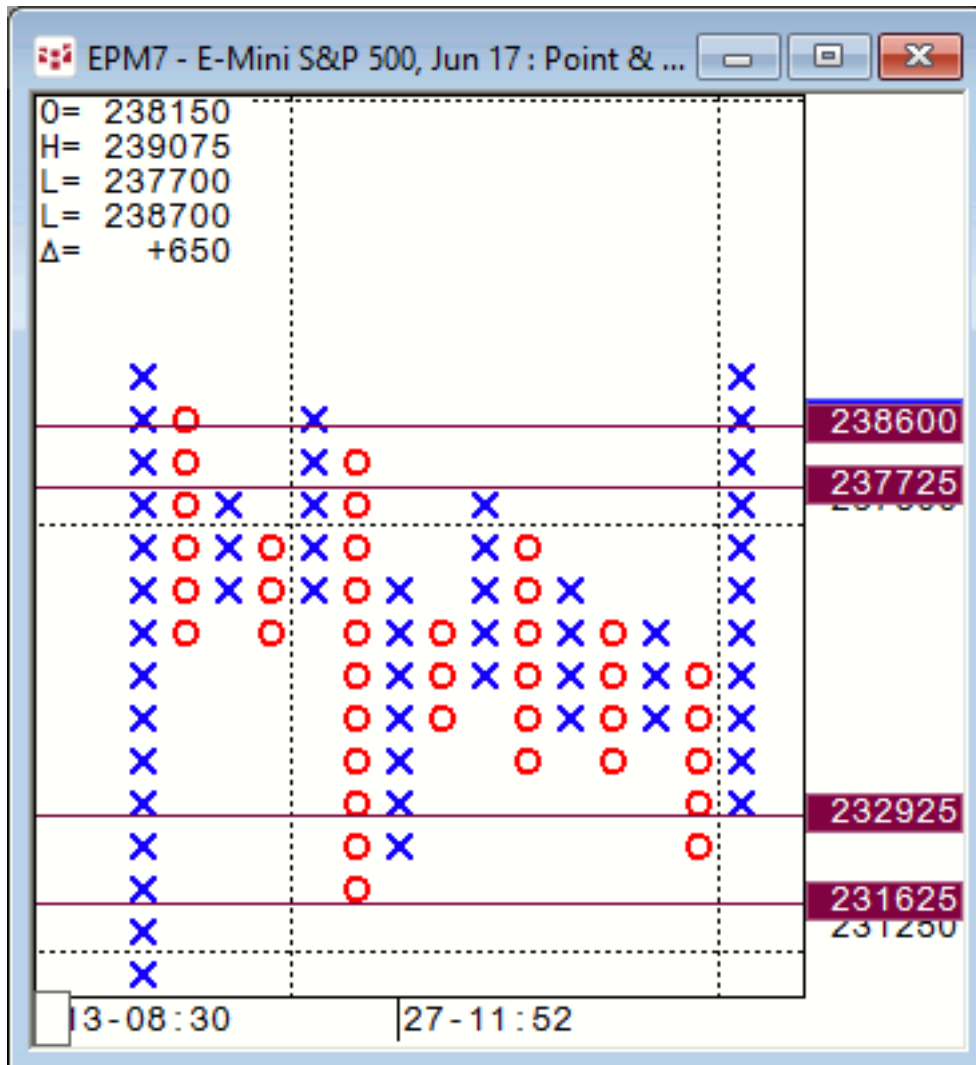




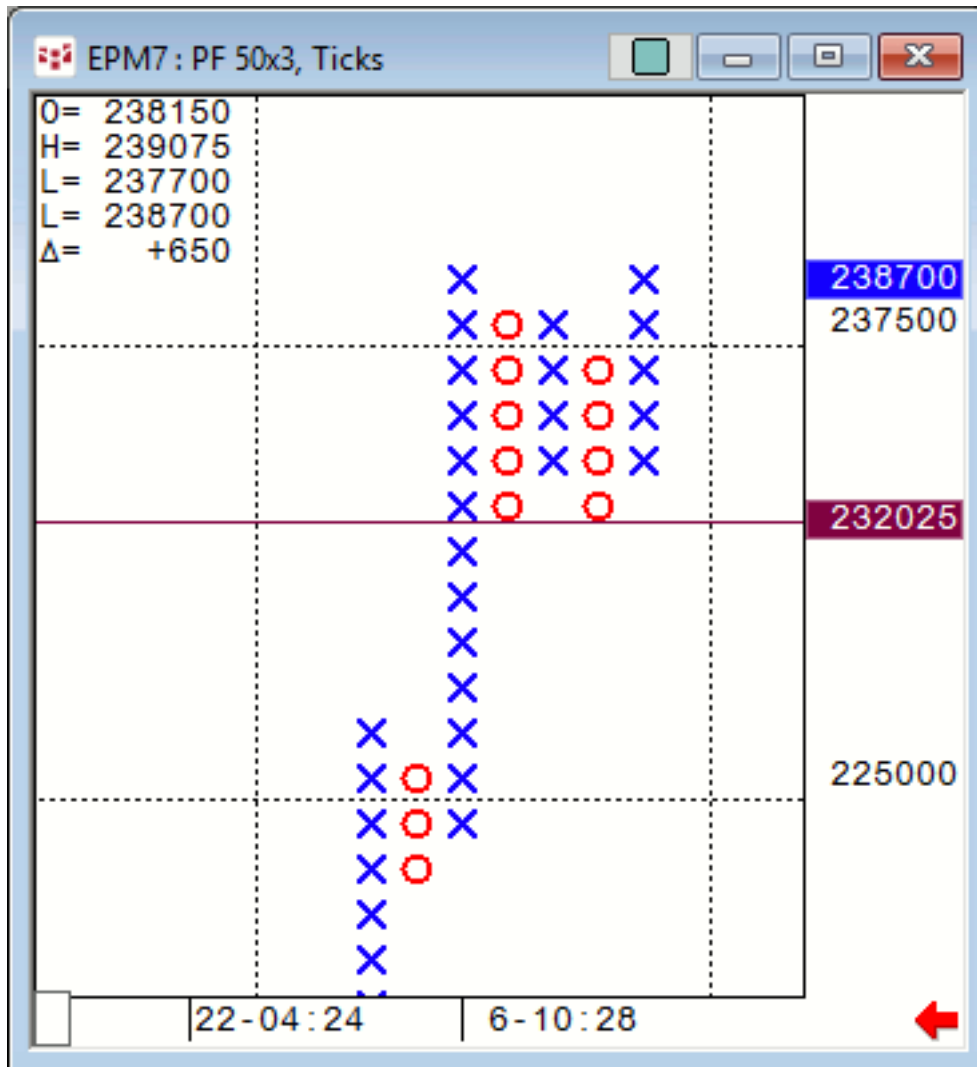
## Daily Market Intelligence

## Stocks

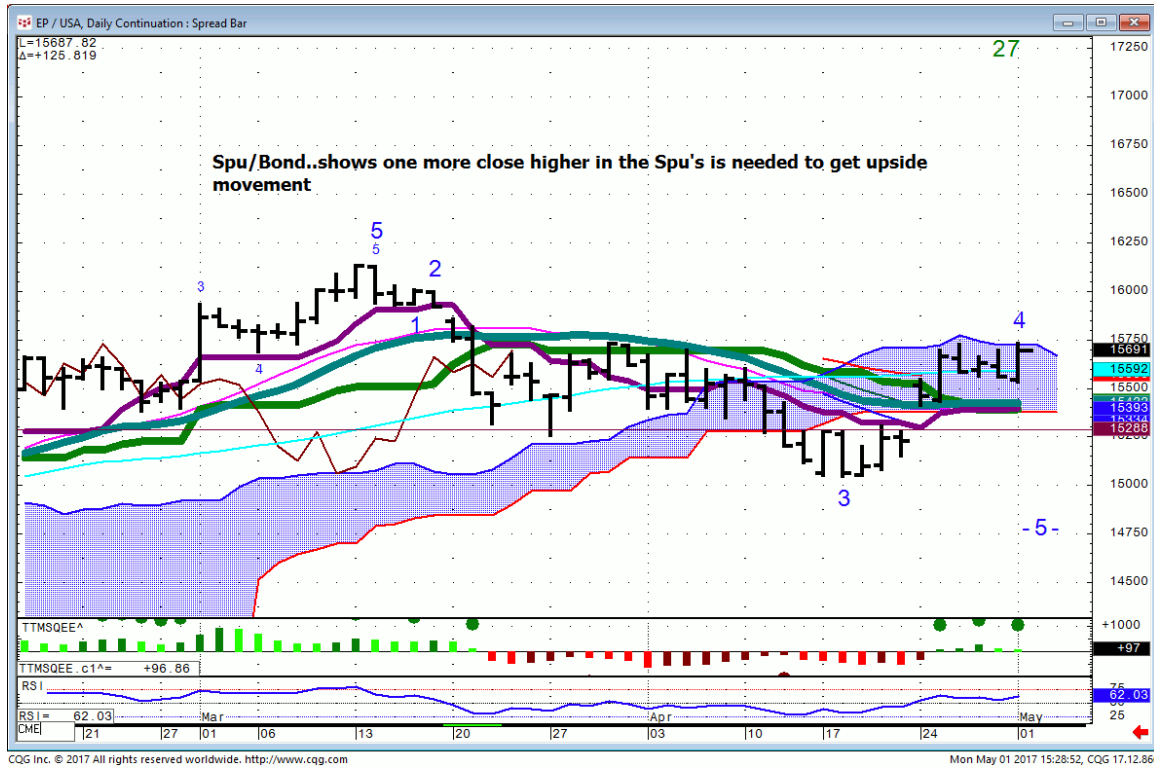
### Spu..25X3 Point & Figure



**Spu...** 50X3 Point & Figure



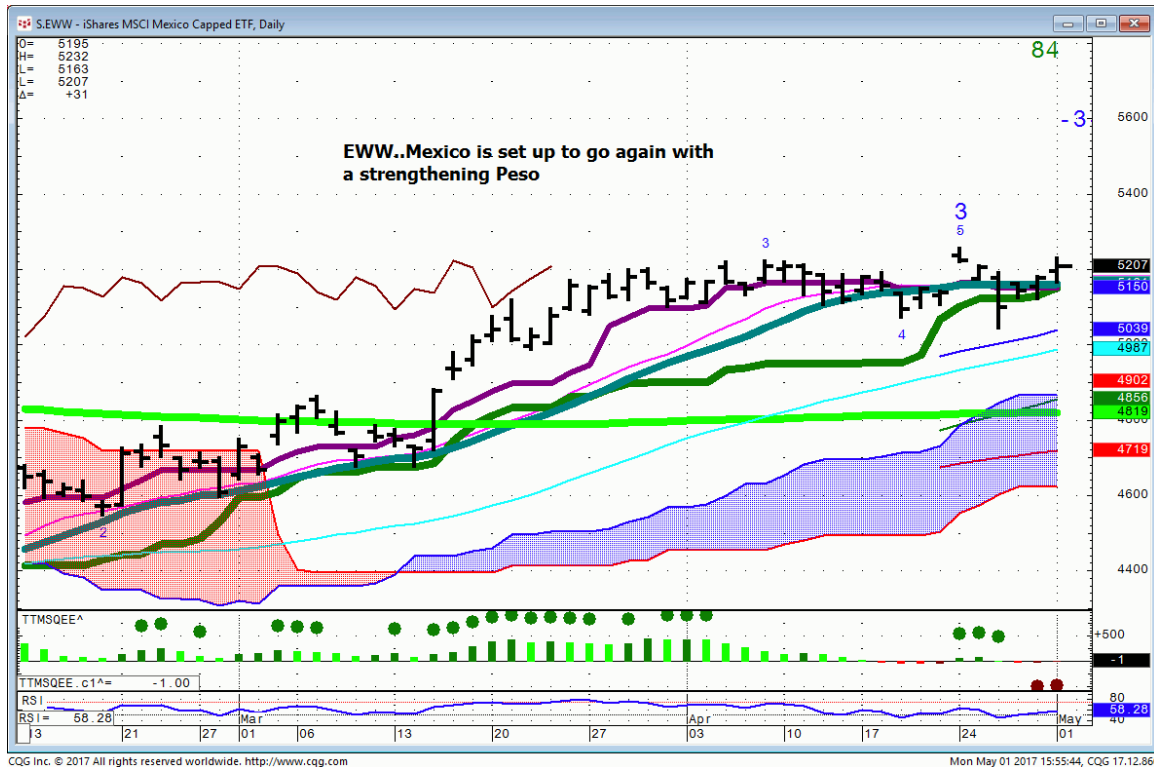
# Spu/Bond...



# SMH...risk is today's low in the Semi's



# EWV...Mexico iShares

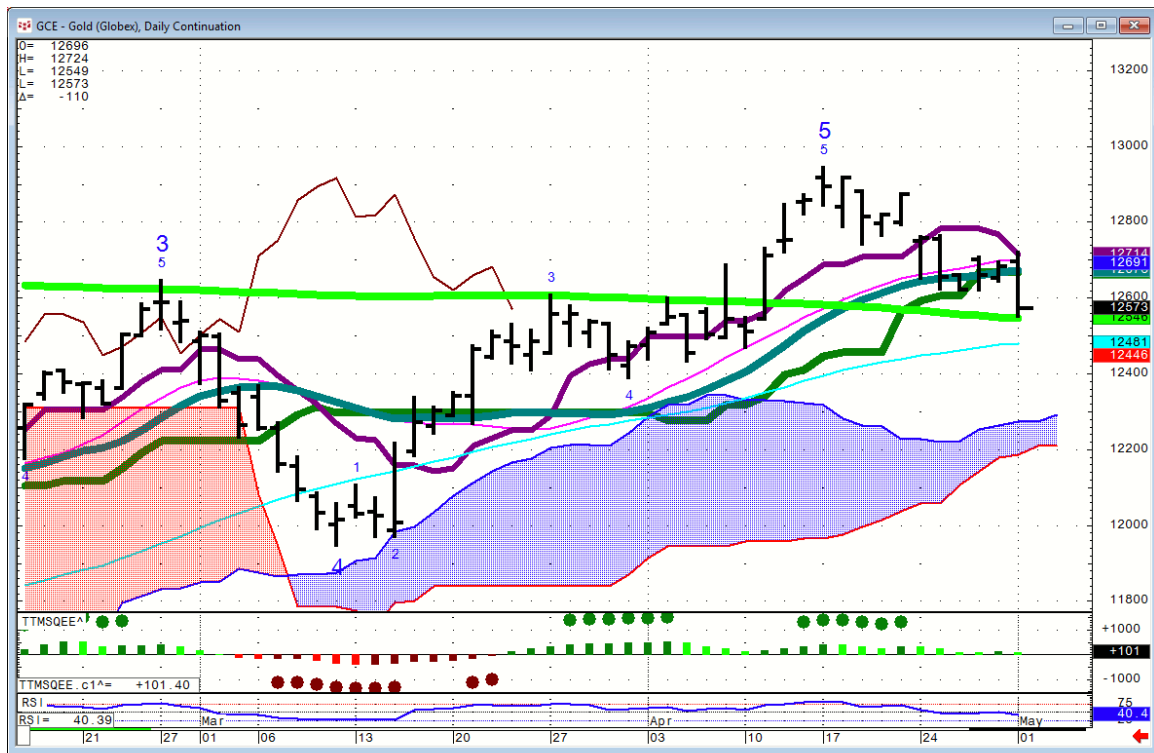


## ***Bonds***

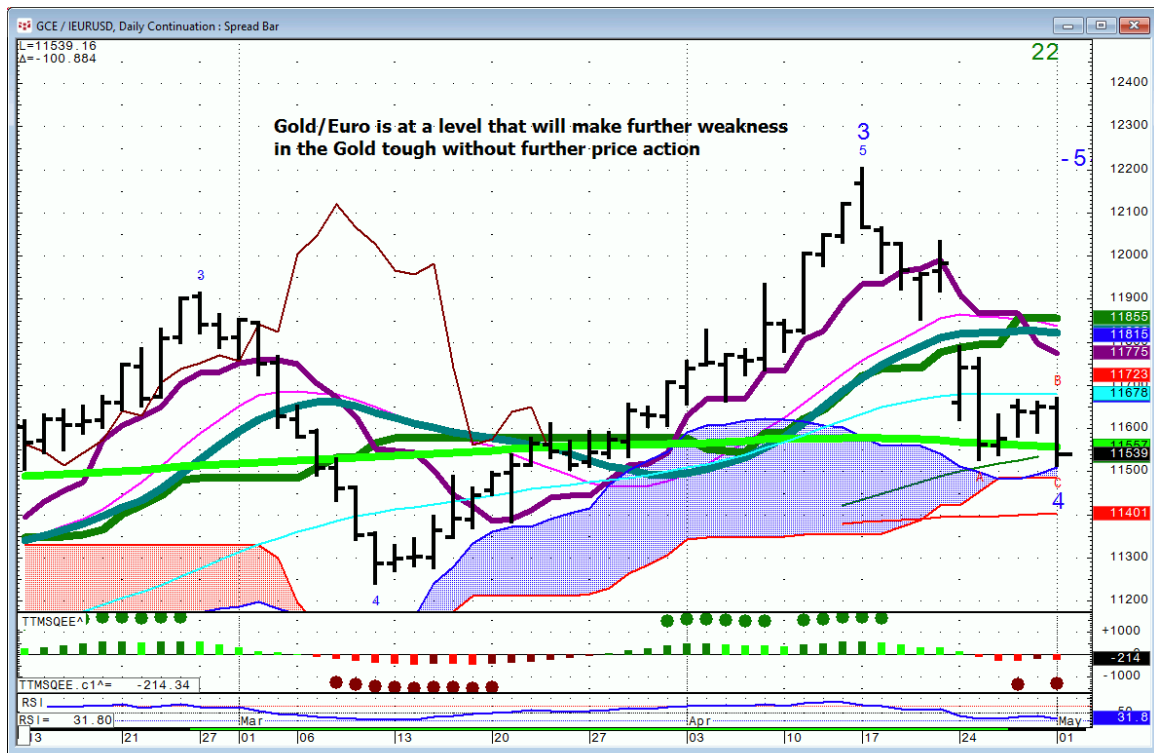
***FX***

# Commodities

## Gold...



# Gold/EURUSD



**General Comments or Valuable Insight**

**DJI & Spu's are still sitting on levels that need to see some lift off or a little Bang Zoom.**

**Tech continues to lead. I'm looking at 5900 as the first major wiggle measured off the 200o High.**

**Looking at the U.S. Closes you should expect follow through in Asia and Europe.**

**<http://www.whitewavetradingstrategies.com/glossary/>**

**WhiteWave Trading Strategies**  
**Independent Research from the Pro's Pro**

**We Trade to Make Money**  
[www.whitewavetradingstrategies.com](http://www.whitewavetradingstrategies.com)  
[info@whitewavetradingstrategies.com](mailto:info@whitewavetradingstrategies.com)