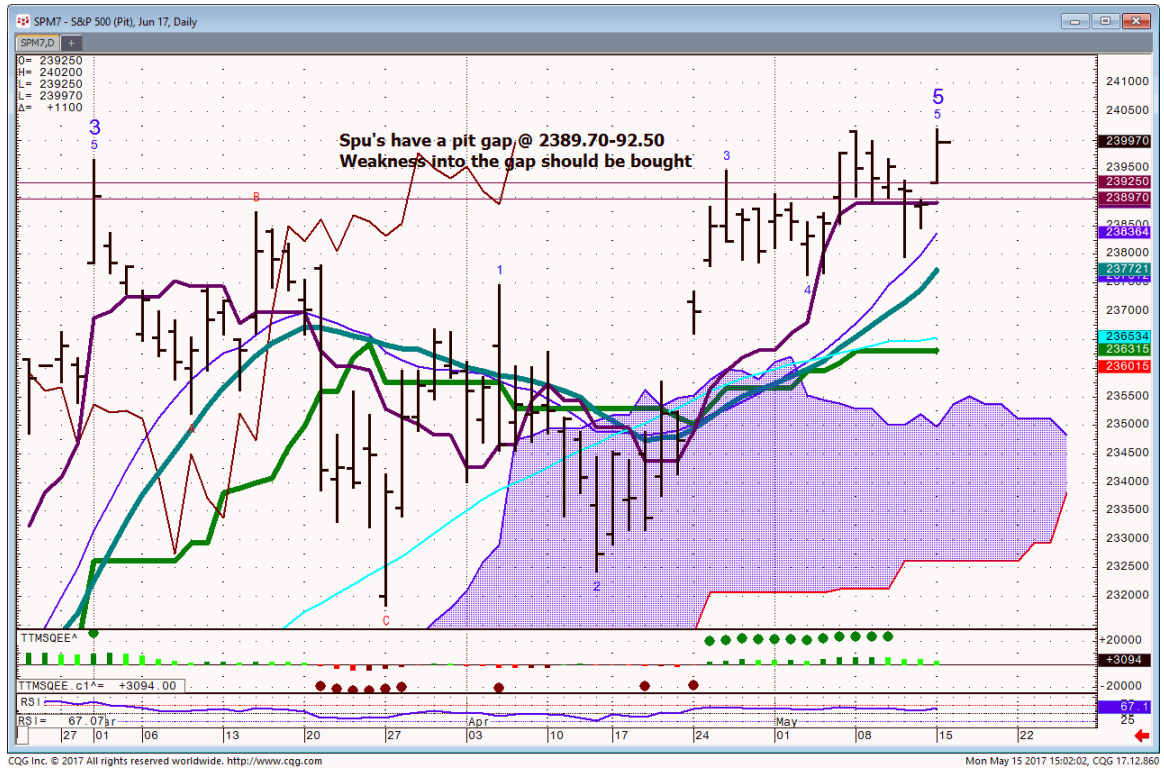




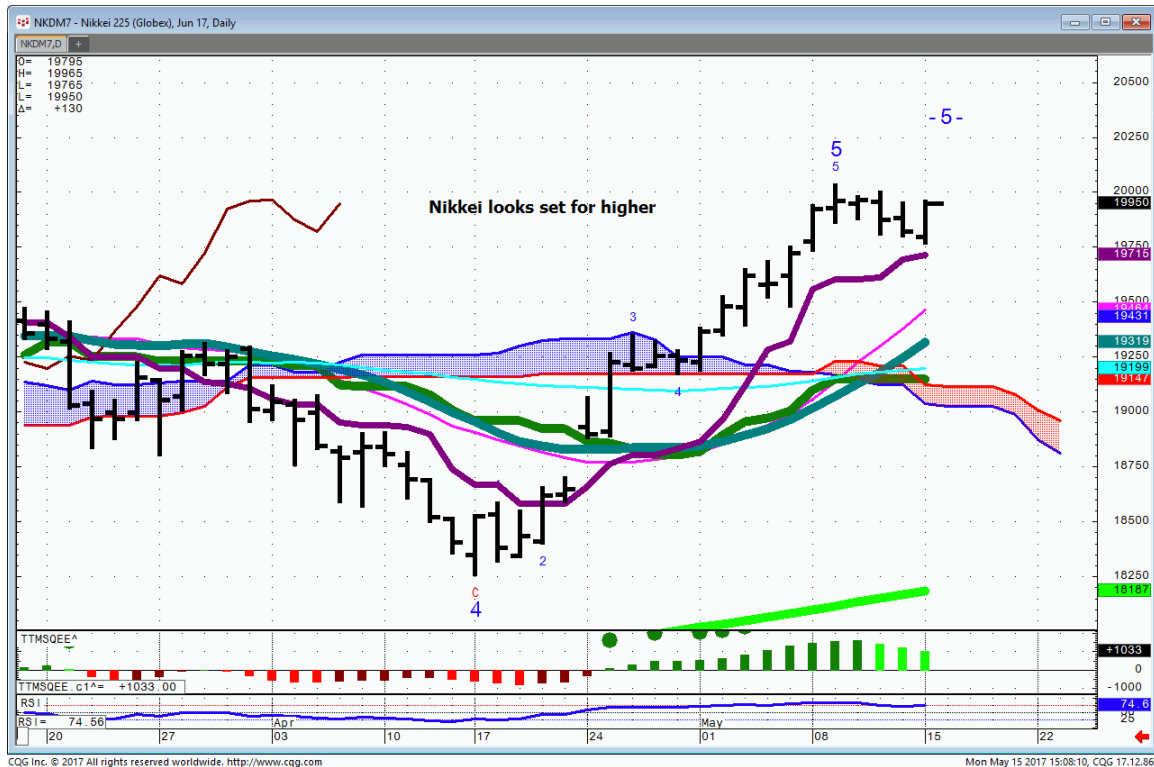
## Daily Market Intelligence

# Stocks

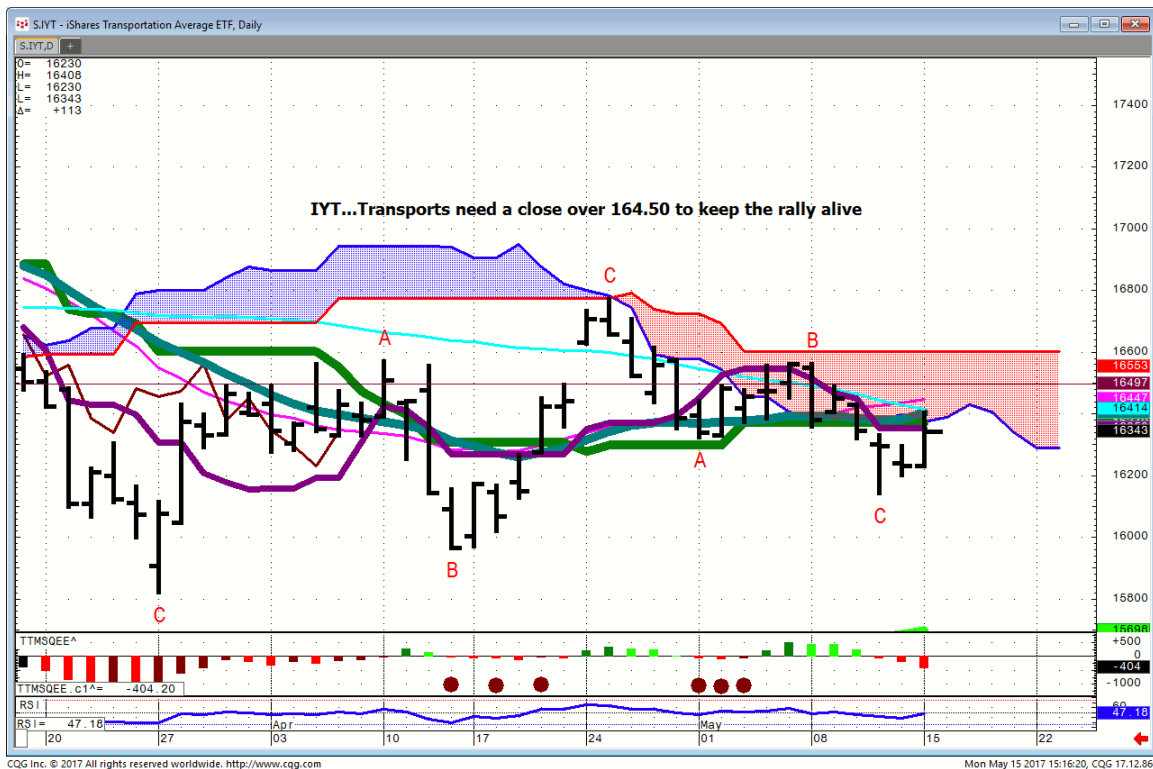
## Spu...Pit Daily



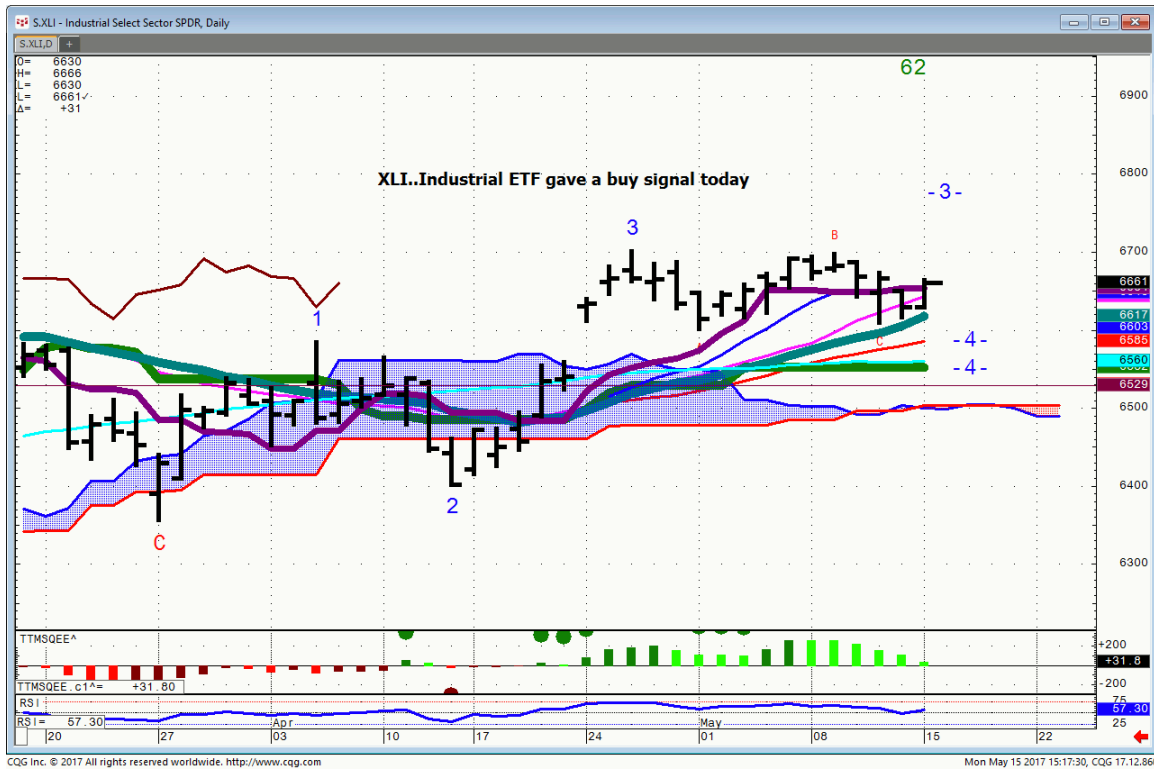
# Nikkei...



# IYT... ETF

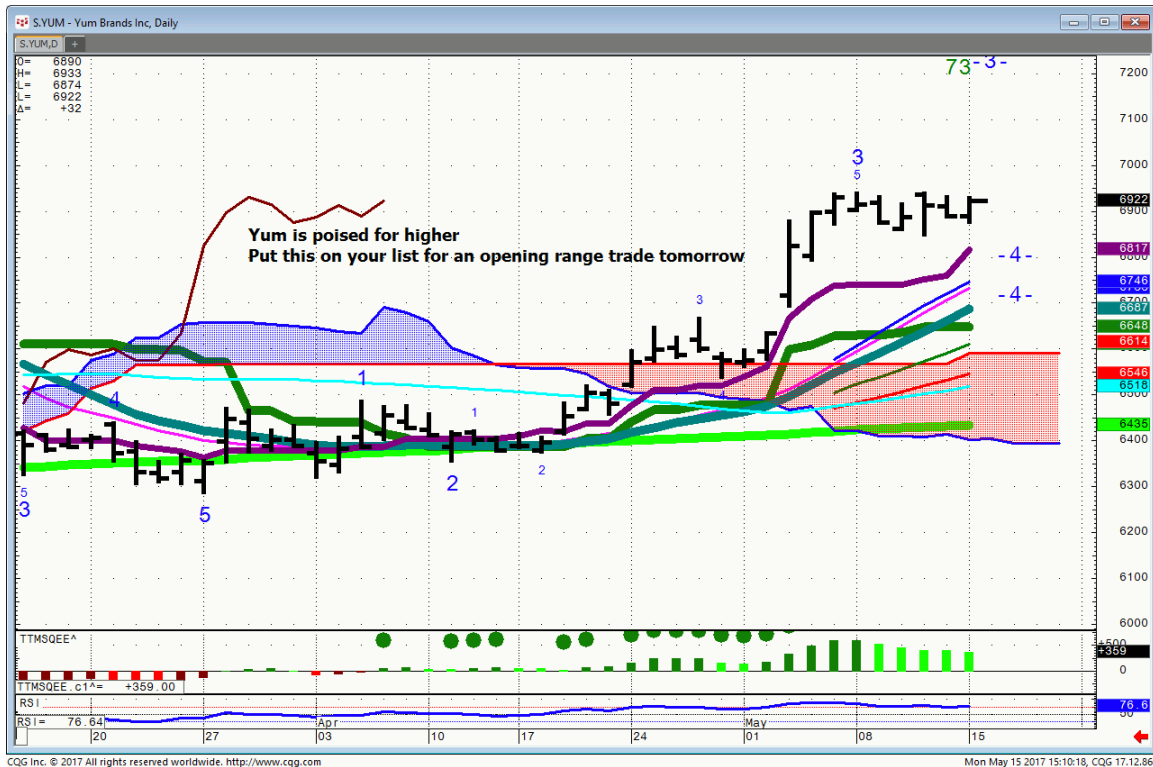


# XLI...

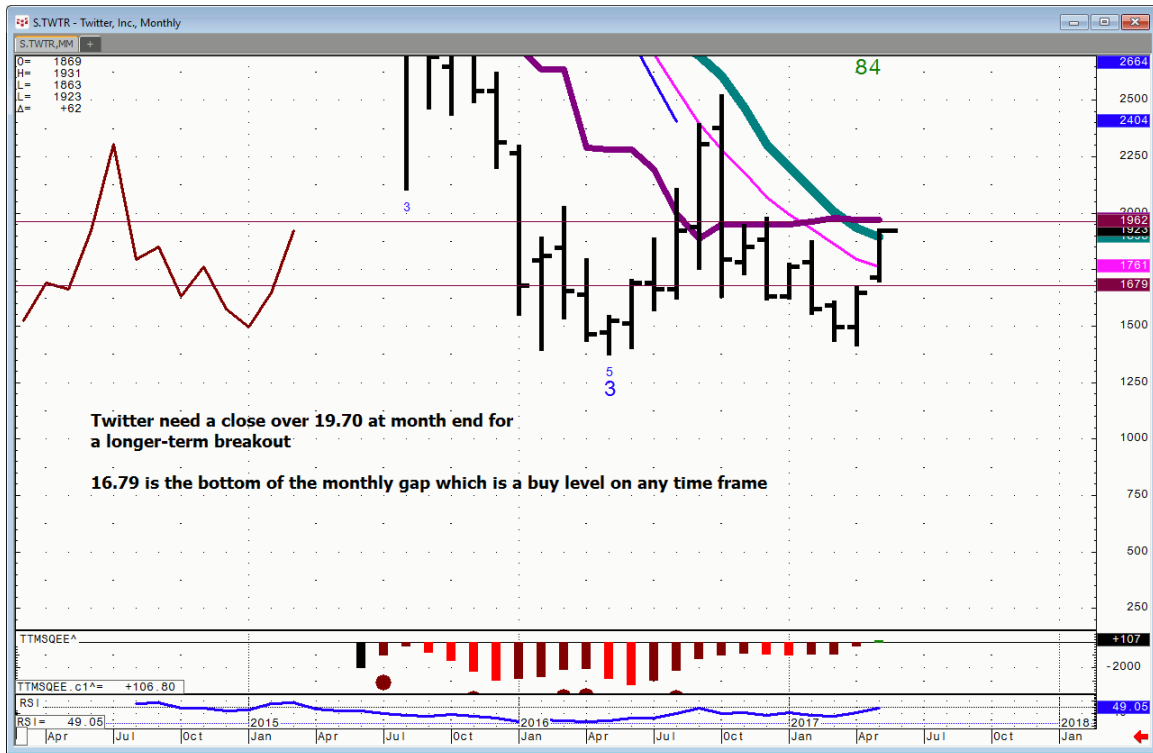




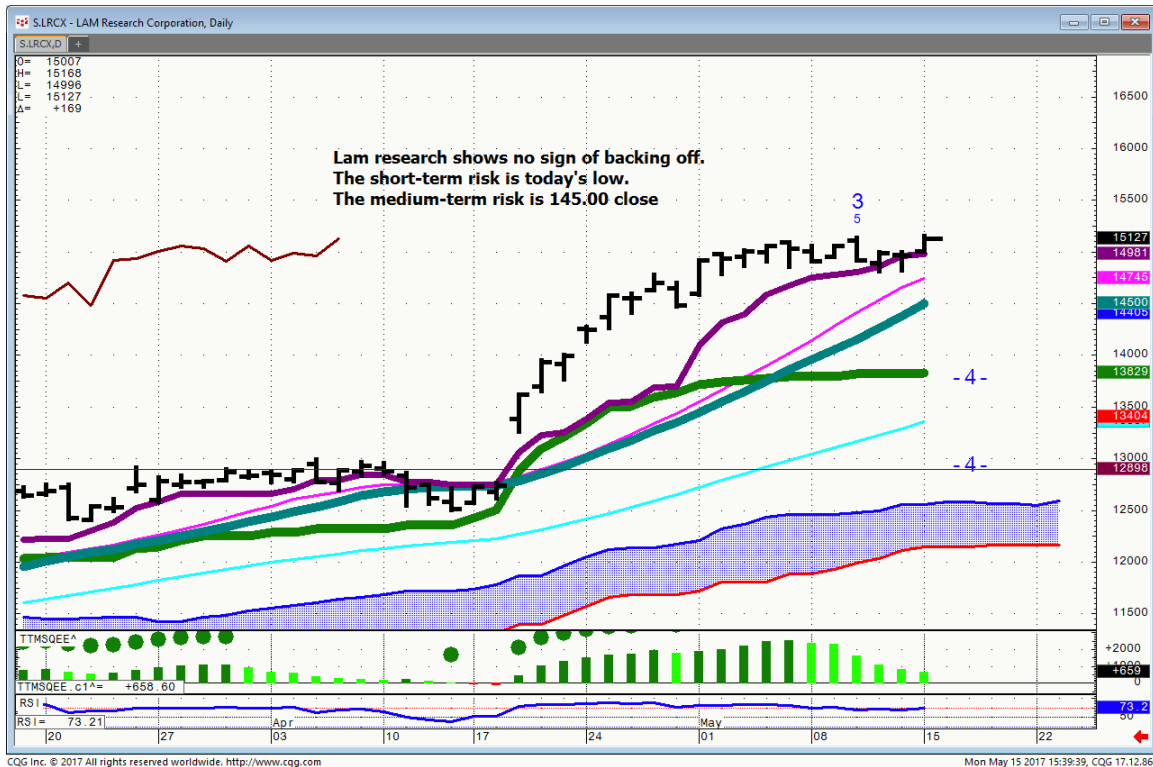
# YUM...



# TWTR...Monthly



# LRCX...



## ***Bonds***

***FX***

## ***Commodities***

## **General Comments or Valuable Insight**

**Oil was the early show. APA & SWN traded remarkably weak given the strength of Oil.**

**Investors and talking heads are getting excited about the upside prospects for Oil again. This is typically when it rolls over and dies.**

**I remain bullish the Indices. We can chop around for a couple of days first, but the bottom line is higher.**

### **The late Show 5/11/17**

The later in the day it gets without anymore selling the greater the odds that today's selloff is about all you're going to get.

**CSX,KSU,YUM,EWW,FDX,AMZN,AMD & SMH** are all attractive against today's lows.

**Of the above names CSX was a dud, which failed to follow through today.**

**AMD is up 10%.**

**<http://www.whitewavetradingstrategies.com/glossary/>**

**WhiteWave Trading Strategies**  
**Independent Research from the Pro's Pro**

**We Trade to Make Money**  
[www.whitewavetradingstrategies.com](http://www.whitewavetradingstrategies.com)  
[info@whitewavetradingstrategies.com](mailto:info@whitewavetradingstrategies.com)