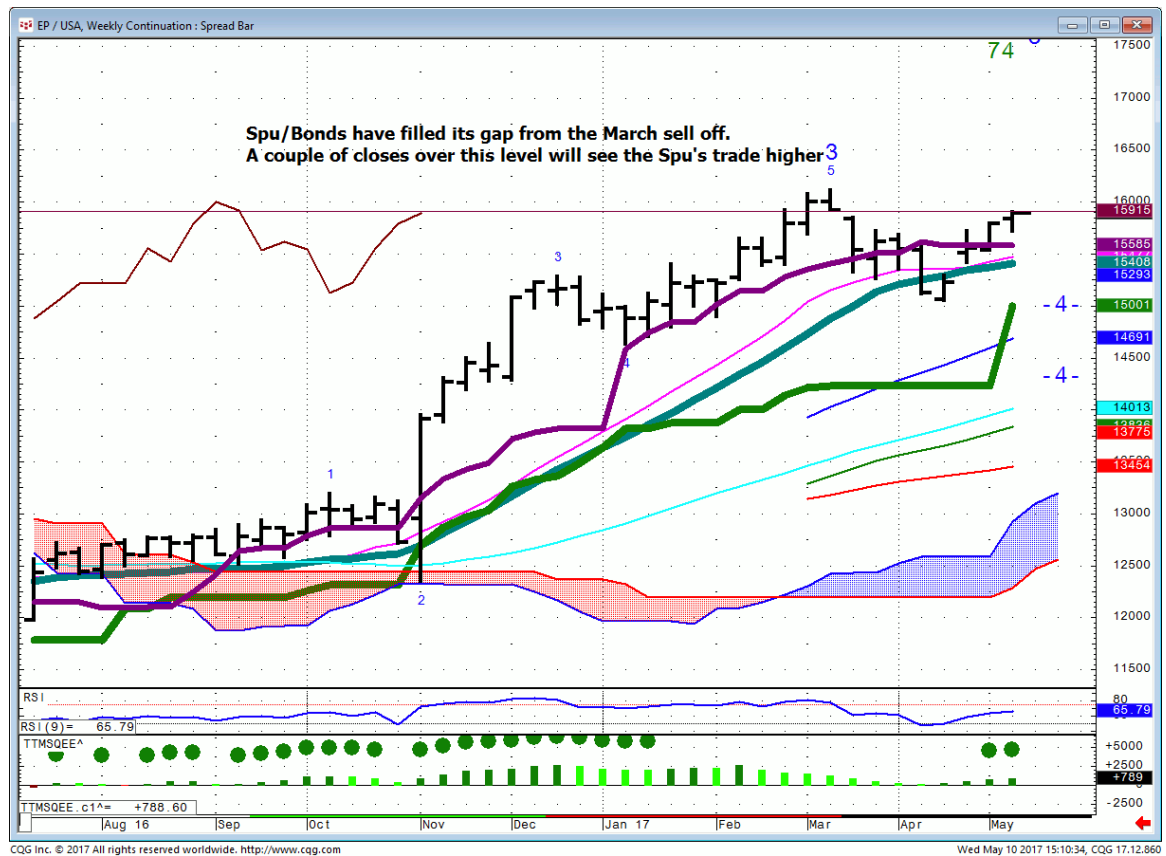




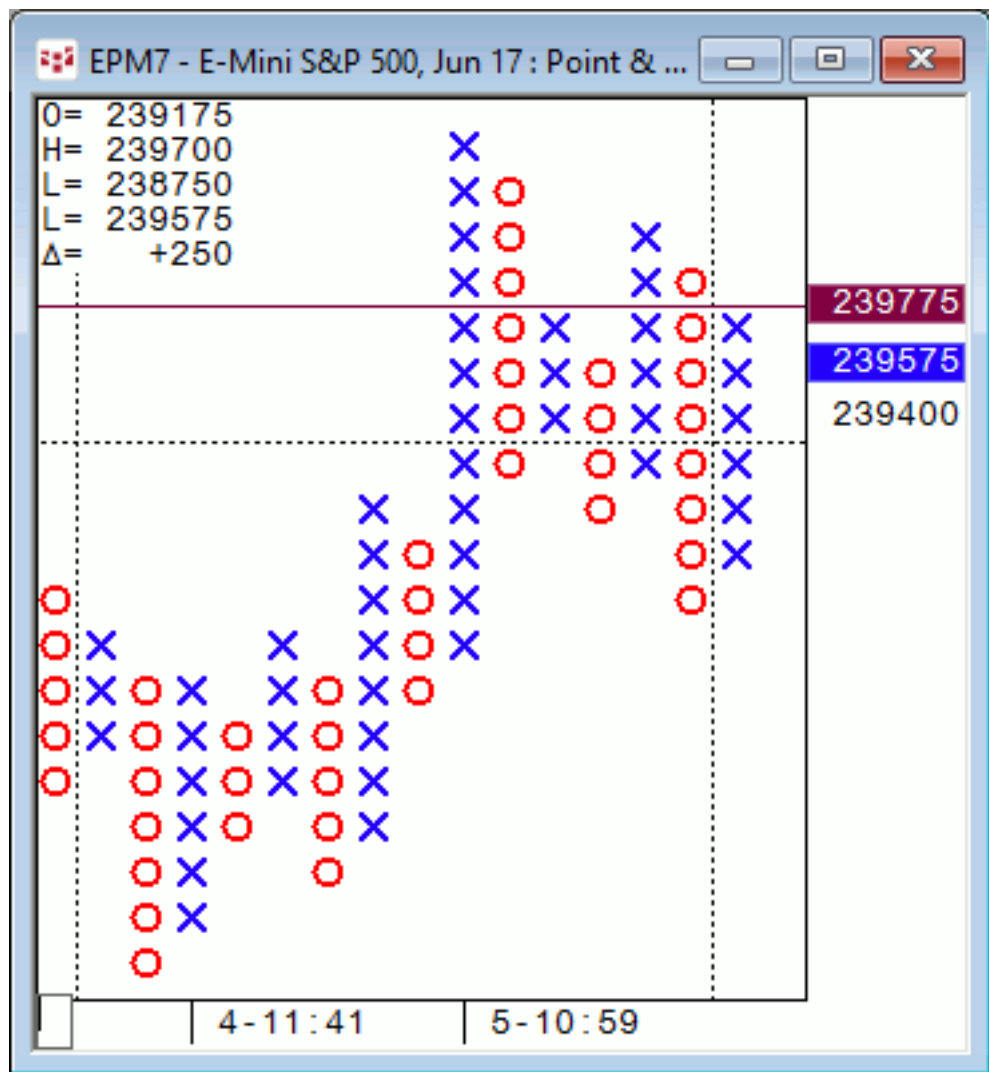
Daily Market Intelligence

Stocks

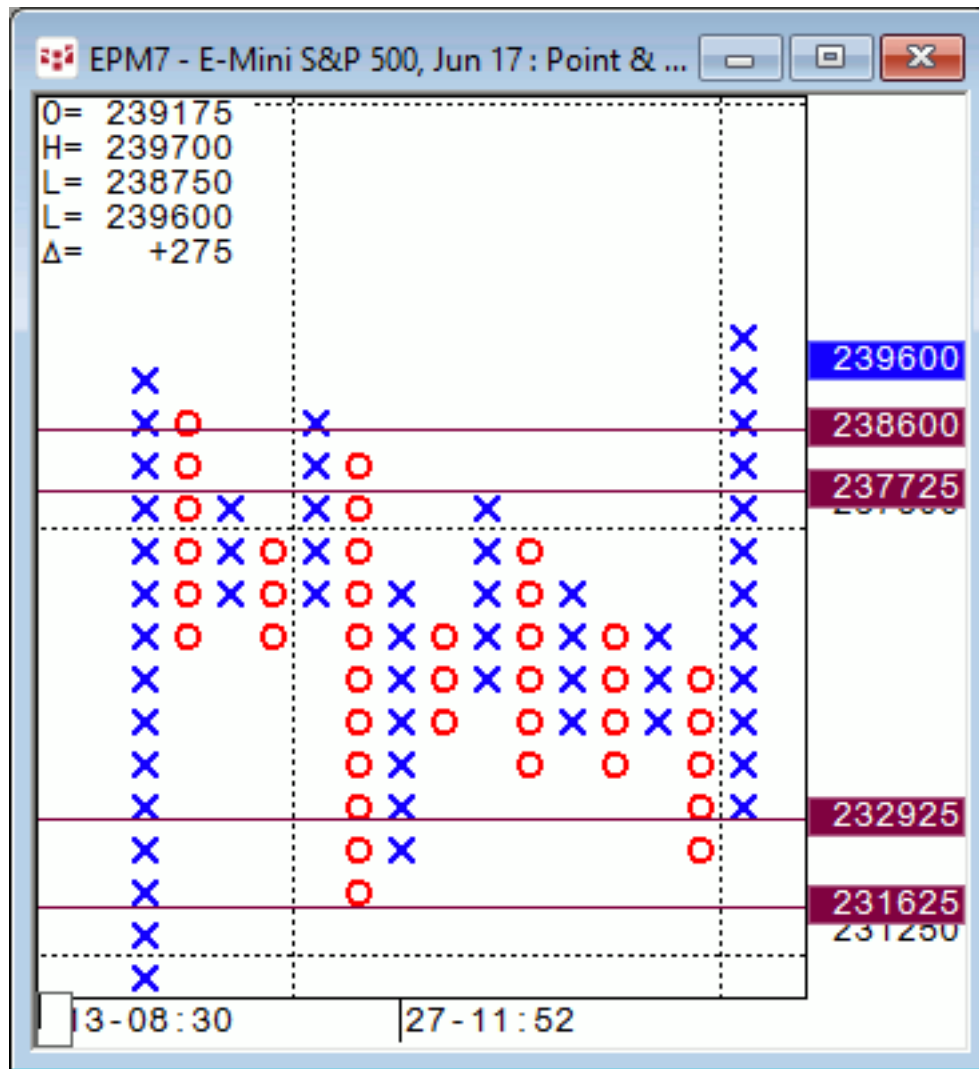
Spu/Bond...weekly



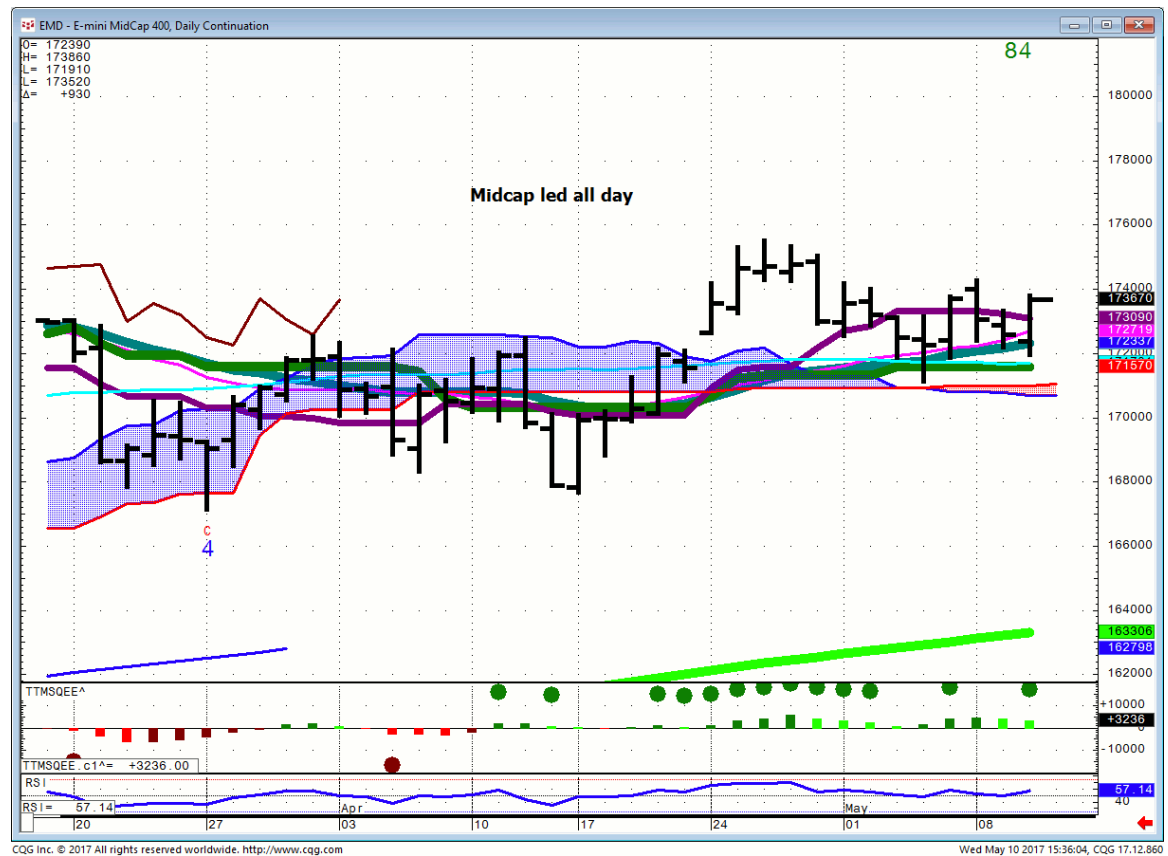
Spu...short term P&F is stuck between 2390-97



Spu...25X3 P&F shows up and would take a 25 handle selloff to turn.



Midcap 400...

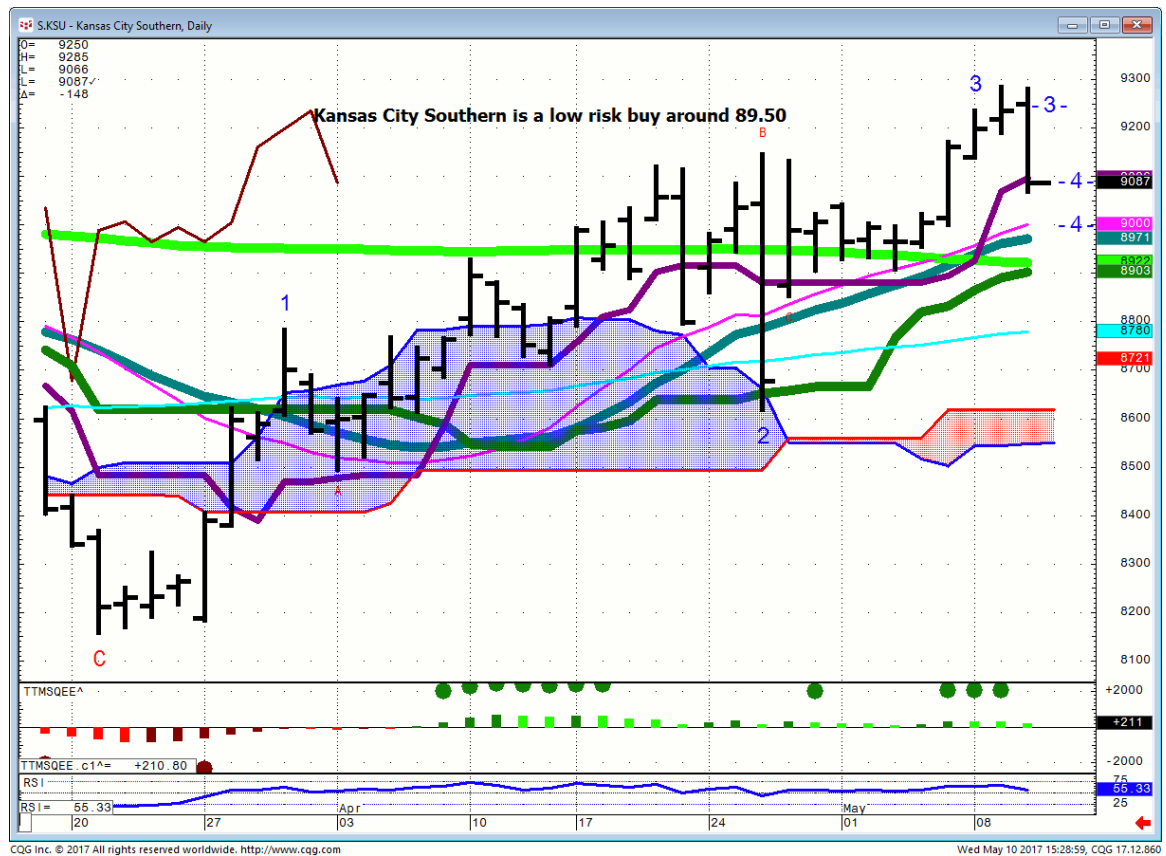


XLE...Energy Select ETF



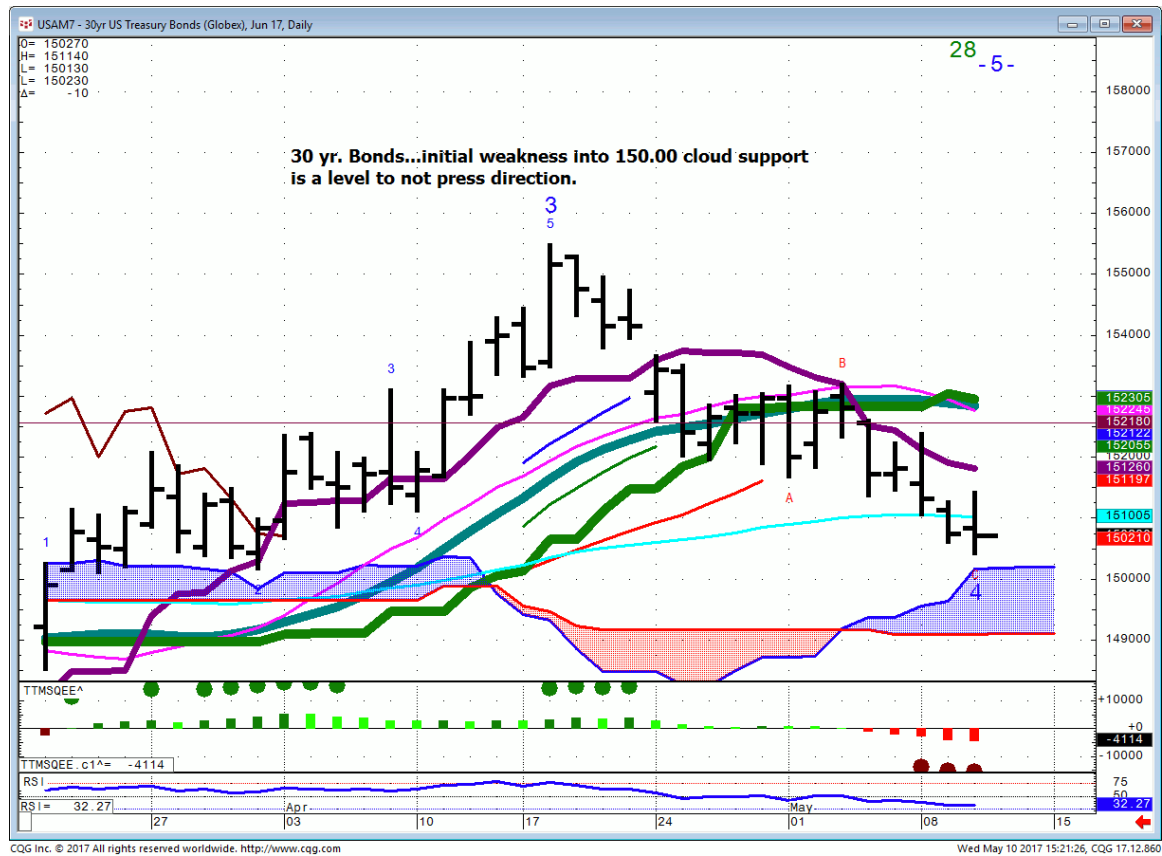
KSU...when Yra speaks we look and listen.

<https://yragharris.com/2017/05/09/school/>



Bonds

30 Yr...



DB - Euro Bund (10yr, Weekly Continuation)

O= 16041
H= 16083
L= 16022
C= 16032
Δ= +3

67

Bunds 160.20 is the key to further Risk On
Sustained and closing price action under 160.20
should be deemed Risk On.

A

B

4

TMSQEE^

TMSQEE c1^= -185.40

RSI

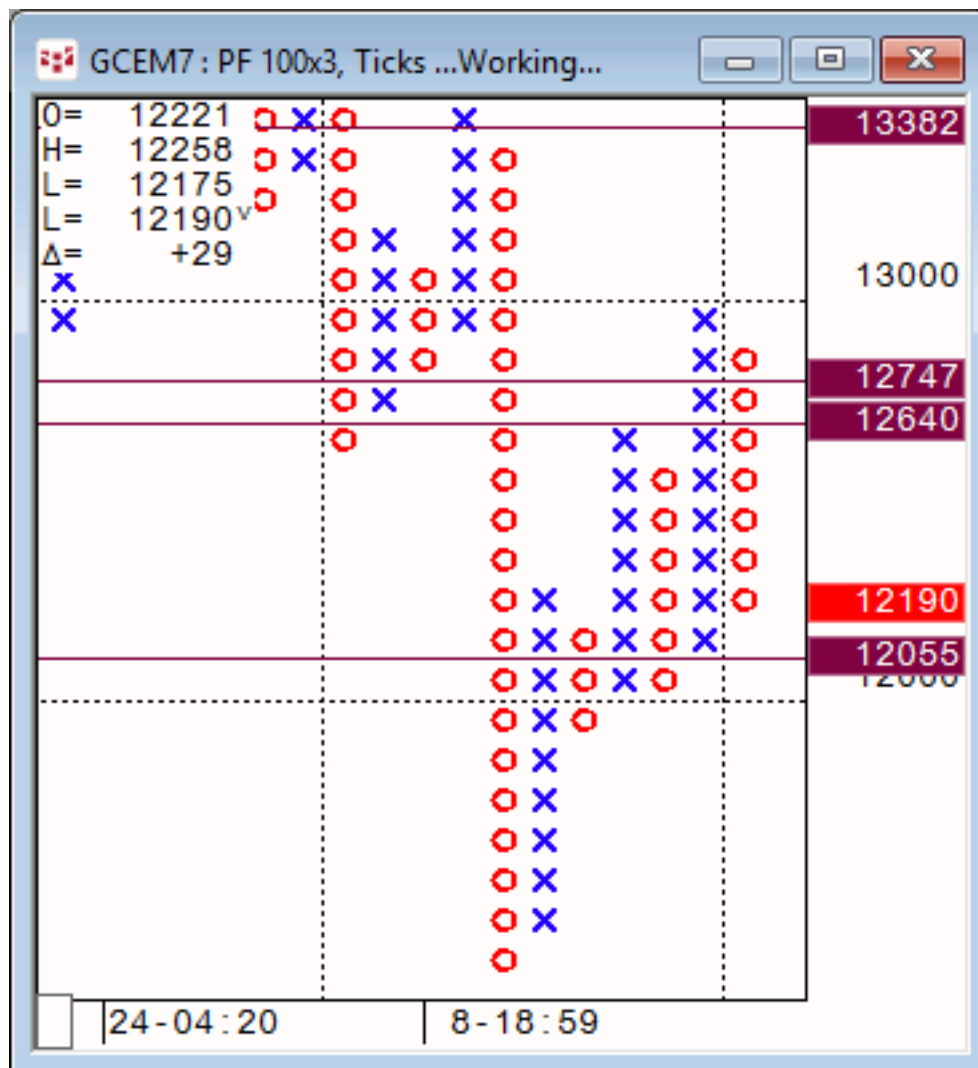
RSI= 40.27

17000
16800
16600
16400
16200
16000
15800
15600
15400
15200
15000
14800
14600
14400
14200
14000
13800
13600
13400
13200
13000
12800
12600
12400
12200
12000
11800
11600
11400
11200
11000
10800
10600
10400
10200
10000
9800
9600
9400
9200
9000
8800
8600
8400
8200
8000
7800
7600
7400
7200
7000
6800
6600
6400
6200
6000
5800
5600
5400
5200
5000
4800
4600
4400
4200
4000
3800
3600
3400
3200
3000
2800
2600
2400
2200
2000
1800
1600
1400
1200
1000
800
600
400
200
0
-200
-400
-600
-800
-1000
-1200
-1400
-1600
-1800
-2000
-2200
-2400
-2600
-2800
-3000
-3200
-3400
-3600
-3800
-4000
-4200
-4400
-4600
-4800
-5000
-5200
-5400
-5600
-5800
-6000
-6200
-6400
-6600
-6800
-7000
-7200
-7400
-7600
-7800
-8000
-8200
-8400
-8600
-8800
-9000
-9200
-9400
-9600
-9800
-10000
-10200
-10400
-10600
-10800
-11000
-11200
-11400
-11600
-11800
-12000
-12200
-12400
-12600
-12800
-13000
-13200
-13400
-13600
-13800
-14000
-14200
-14400
-14600
-14800
-15000
-15200
-15400
-15600
-15800
-16000
-16200
-16400
-16600
-16800
-17000
-17200
-17400
-17600
-17800
-18000
-18200
-18400
-18600
-18800
-19000
-19200
-19400
-19600
-19800
-20000
-20200
-20400
-20600
-20800
-21000
-21200
-21400
-21600
-21800
-22000
-22200
-22400
-22600
-22800
-23000
-23200
-23400
-23600
-23800
-24000
-24200
-24400
-24600
-24800
-25000
-25200
-25400
-25600
-25800
-26000
-26200
-26400
-26600
-26800
-27000
-27200
-27400
-27600
-27800
-28000
-28200
-28400
-28600
-28800
-29000
-29200
-29400
-29600
-29800
-30000
-30200
-30400
-30600
-30800
-31000
-31200
-31400
-31600
-31800
-32000
-32200
-32400
-32600
-32800
-33000
-33200
-33400
-33600
-33800
-34000
-34200
-34400
-34600
-34800
-35000
-35200
-35400
-35600
-35800
-36000
-36200
-36400
-36600
-36800
-37000
-37200
-37400
-37600
-37800
-38000
-38200
-38400
-38600
-38800
-39000
-39200
-39400
-39600
-39800
-40000
-40200
-40400
-40600
-40800
-41000
-41200
-41400
-41600
-41800
-42000
-42200
-42400
-42600
-42800
-43000
-43200
-43400
-43600
-43800
-44000
-44200
-44400
-44600
-44800
-45000
-45200
-45400
-45600
-45800
-46000
-46200
-46400
-46600
-46800
-47000
-47200
-47400
-47600
-47800
-48000
-48200
-48400
-48600
-48800
-49000
-49200
-49400
-49600
-49800
-50000
-50200
-50400
-50600
-50800
-51000
-51200
-51400
-51600
-51800
-52000
-52200
-52400
-52600
-52800
-53000
-53200
-53400
-53600
-53800
-54000
-54200
-54400
-54600
-54800
-55000
-55200
-55400
-55600
-55800
-56000
-56200
-56400
-56600
-56800
-57000
-57200
-57400
-57600
-57800
-58000
-58200
-58400
-58600
-58800
-59000
-59200
-59400
-59600
-59800
-60000
-60200
-60400
-60600
-60800
-61000
-61200
-61400
-61600
-61800
-62000
-62200
-62400
-62600
-62800
-63000
-63200
-63400
-63600
-63800
-64000
-64200
-64400
-64600
-64800
-65000
-65200
-65400
-65600
-65800
-66000
-66200
-66400
-66600
-66800
-67000
-67200
-67400
-67600
-67800
-68000
-68200
-68400
-68600
-68800
-69000
-69200
-69400
-69600
-69800
-70000
-70200
-70400
-70600
-70800
-71000
-71200
-71400
-71600
-71800
-72000
-72200
-72400
-72600
-72800
-73000
-73200
-73400
-73600
-73800
-74000
-74200
-74400
-74600
-74800
-75000
-75200
-75400
-75600
-75800
-76000
-76200
-76400
-76600
-76800
-77000
-77200
-77400
-77600
-77800
-78000
-78200
-78400
-78600
-78800
-79000
-79200
-79400
-79600
-79800
-80000

FX

Commodities

Gold...100X3 is a long-term P&F. Gold is trading near the bottom of value on this chart. Sustained and closing price action below 1205 is needed for a lower leg.



General Comments or Valuable Insight

I need to see how the Indices trade over the next 2 sessions. The Spreads are Equity friendly, however the churn (stock rotation) has the Indices in park.

There is a lot of spreading going on, and I'm not one to chase strength in names on a Wednesday going into the close.

It's singles time. The markets could stay difficult for a while.

You **gots tah believe to trade this market.**

I'm changing teams and crossing the border to become a Philistine for the near term.

Show me.

Less is more.

<http://www.whitewavetradingstrategies.com/glossary/>

WhiteWave Trading Strategies
Independent Research from the Pro's Pro

We Trade to Make Money

www.whitewavetradingstrategies.com

info@whitewavetradingstrategies.com