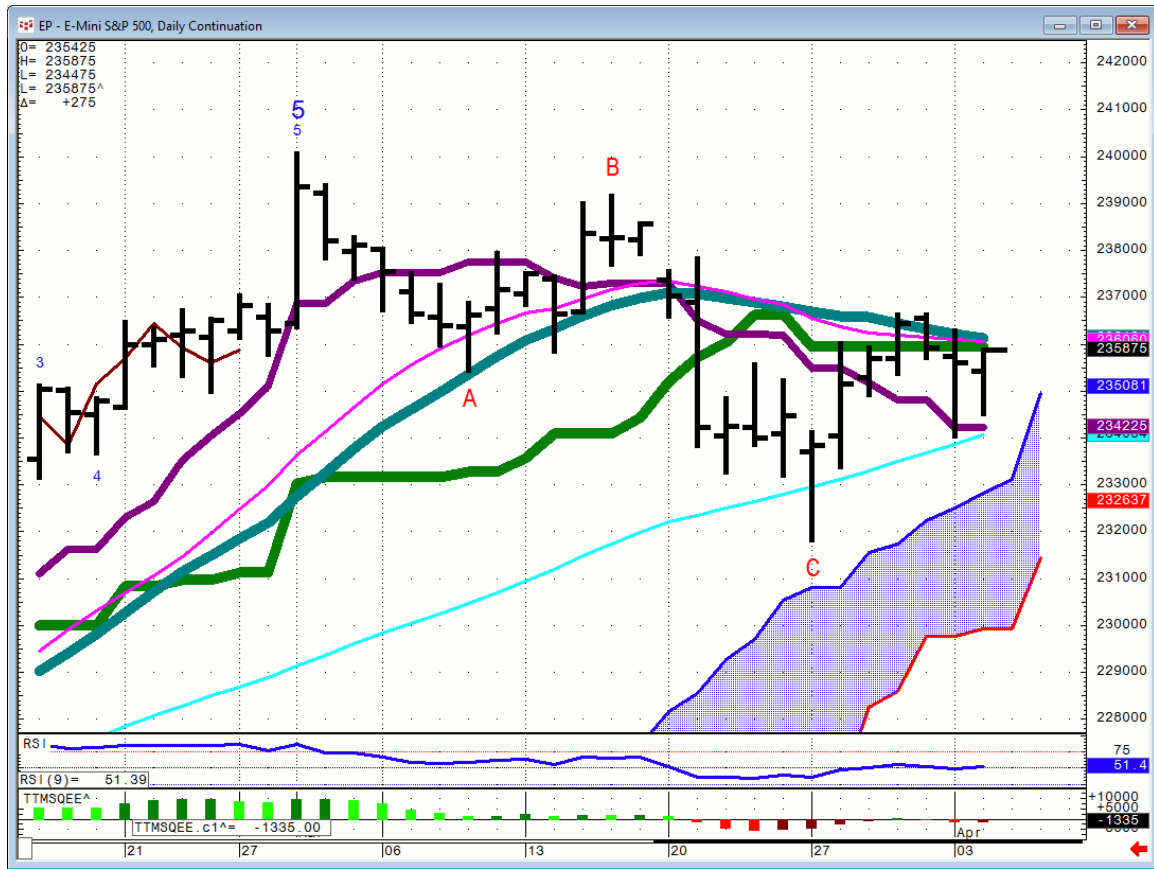




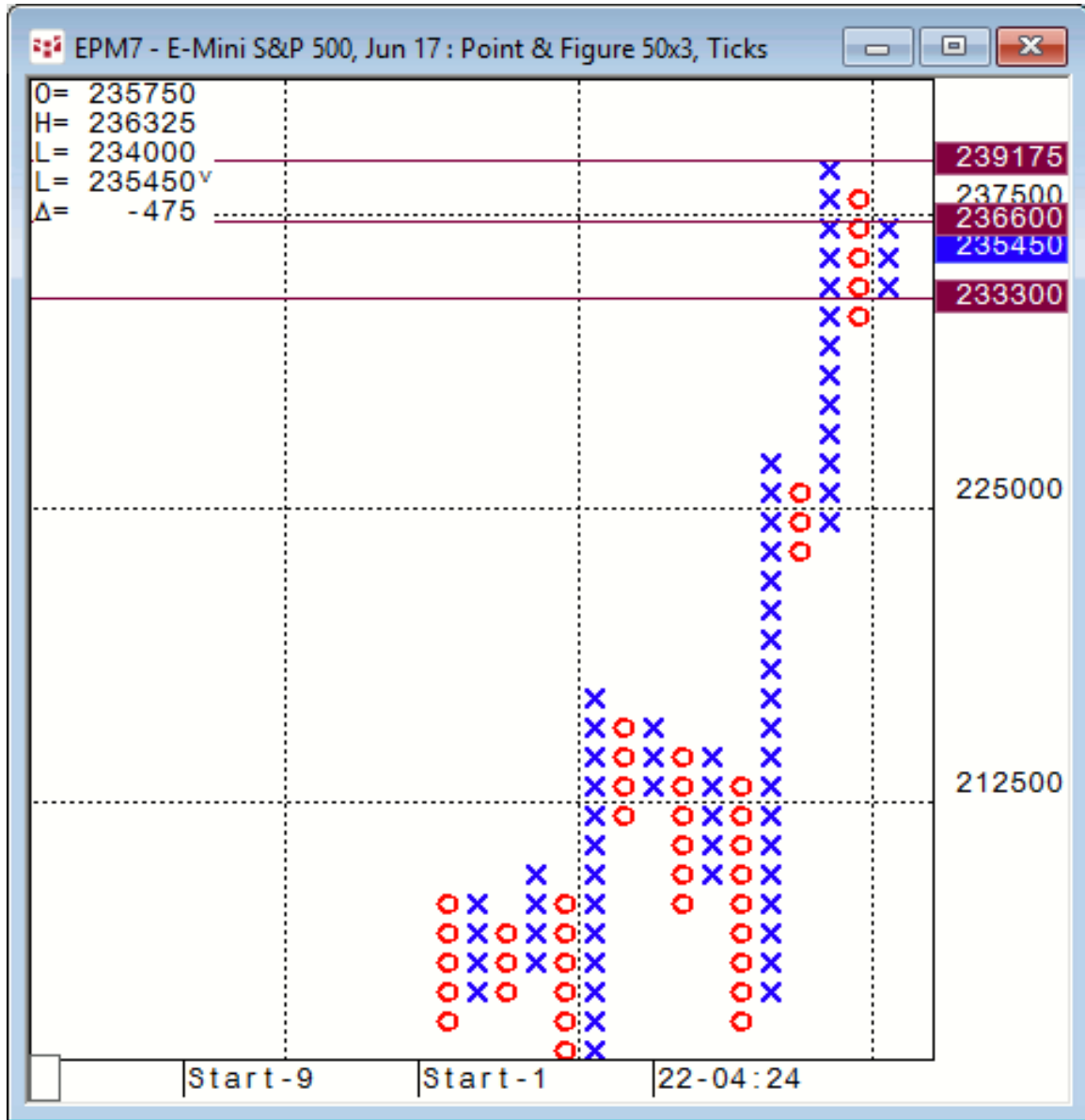
Daily Market Intelligence

Stocks

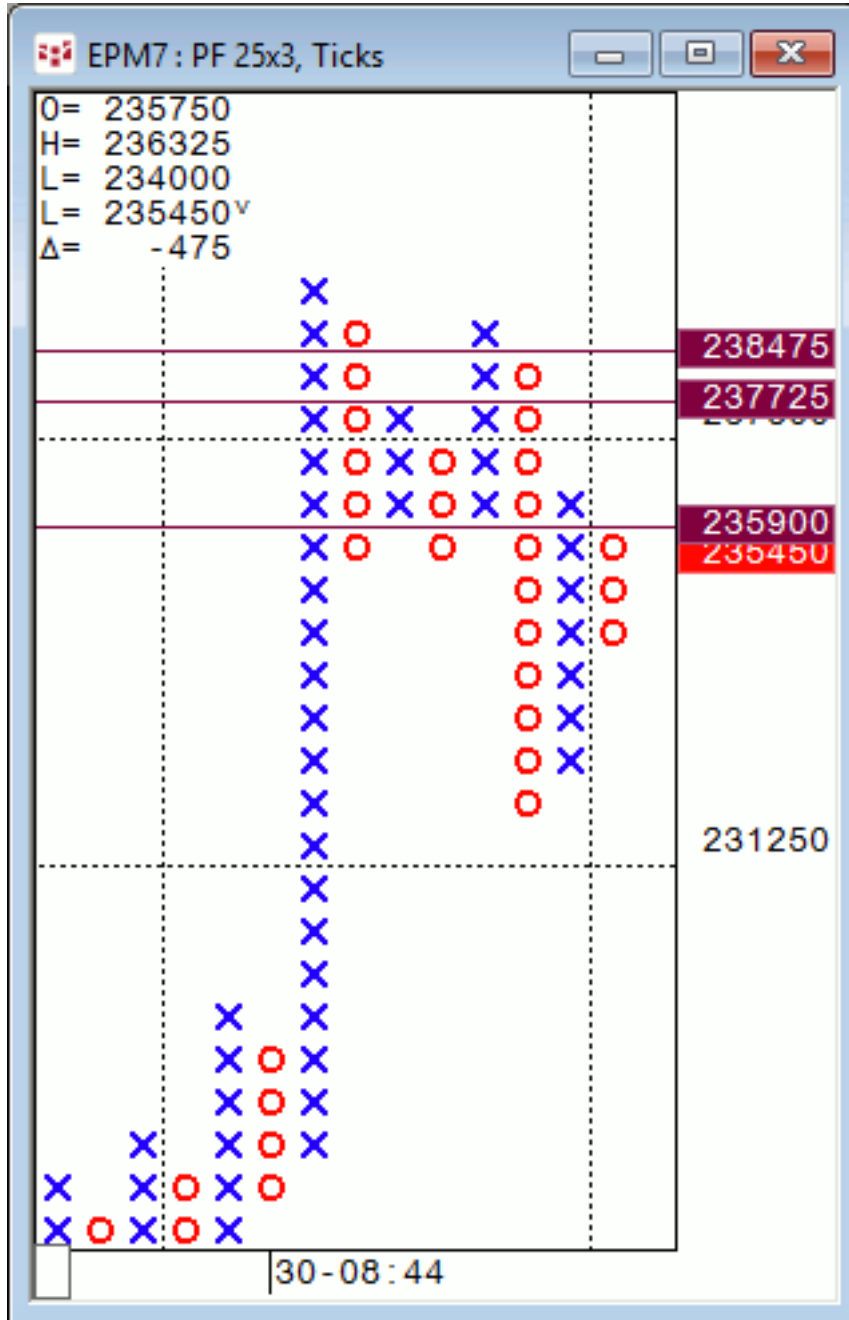
Spu's...



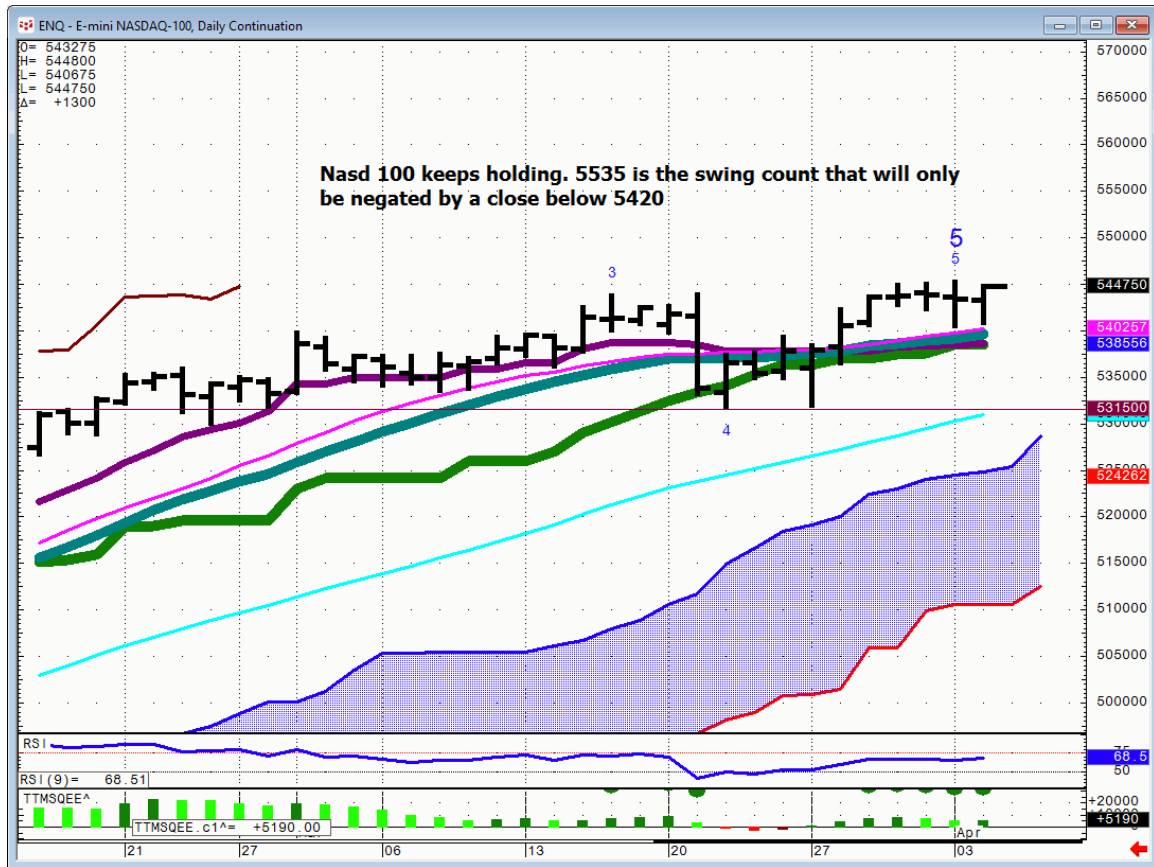
Spu's... 50X3...no change



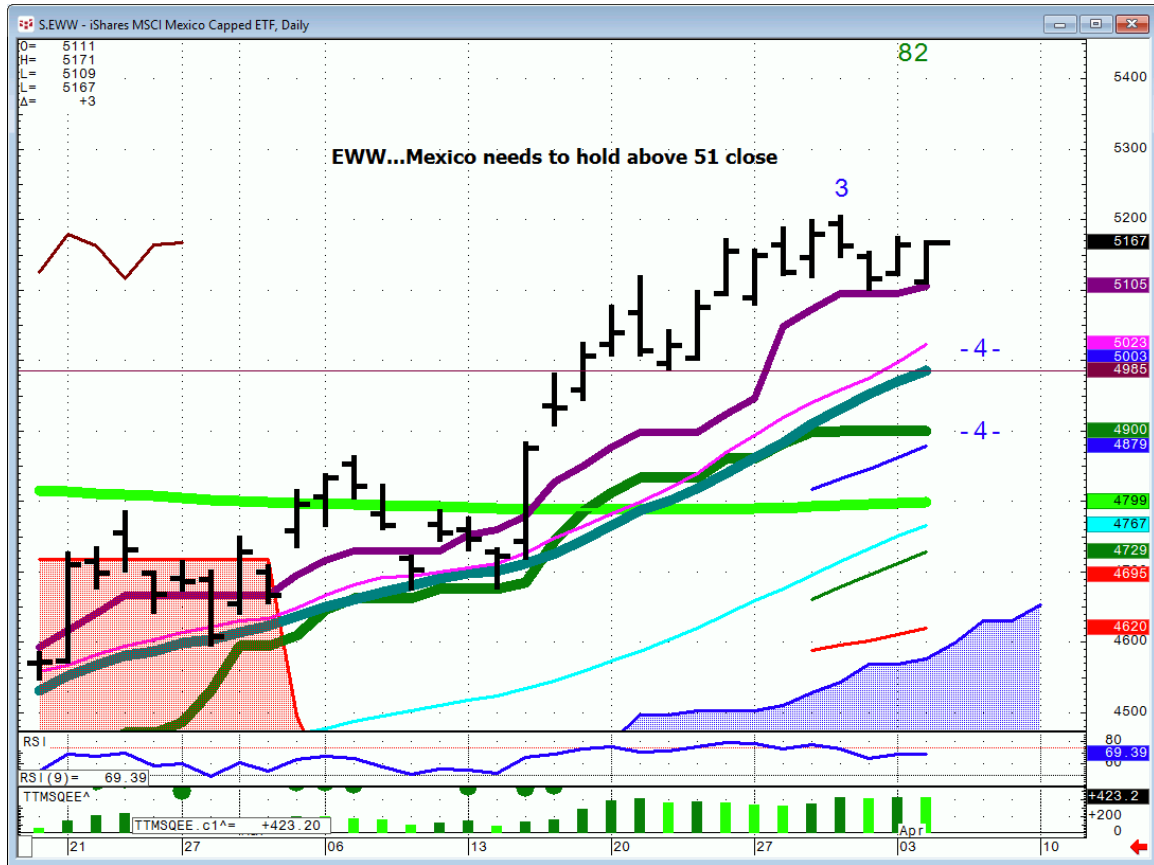
Spu's...25X3...sustaining above 2359 will start to turn the picture.



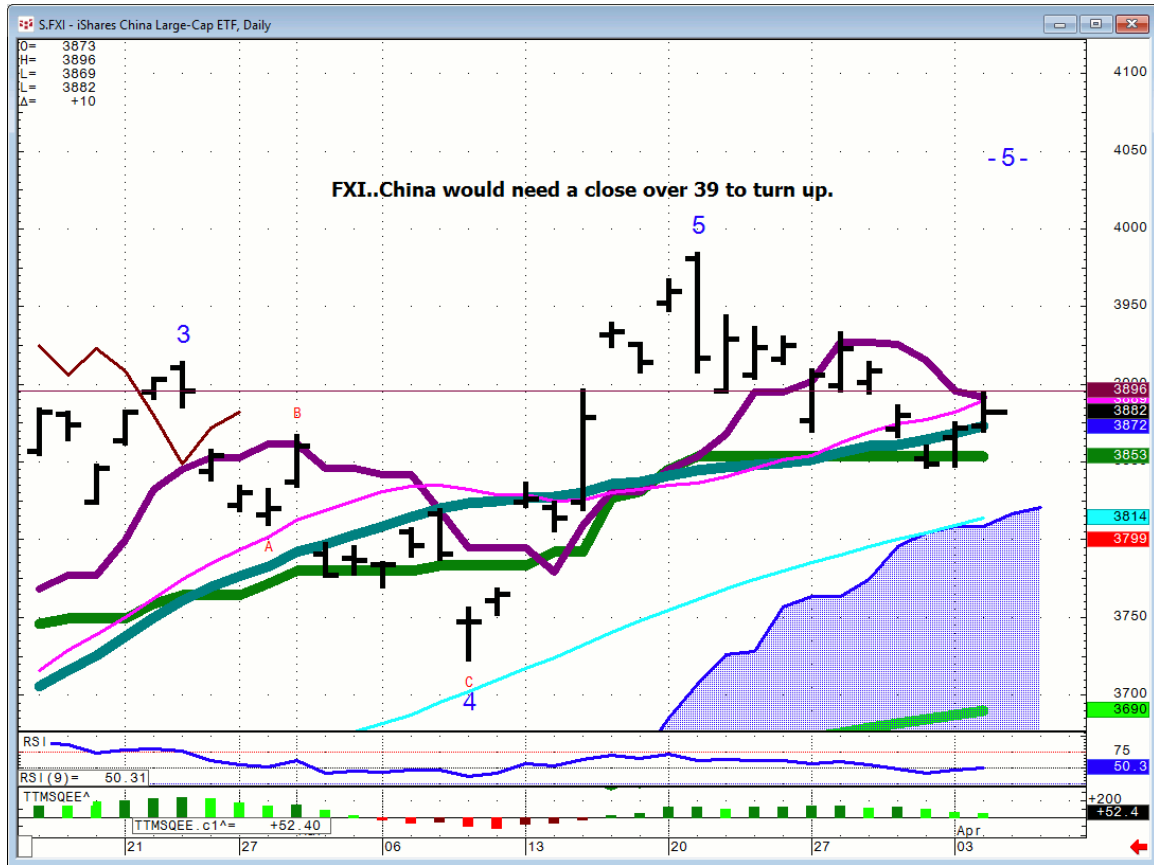
Nasd 100...



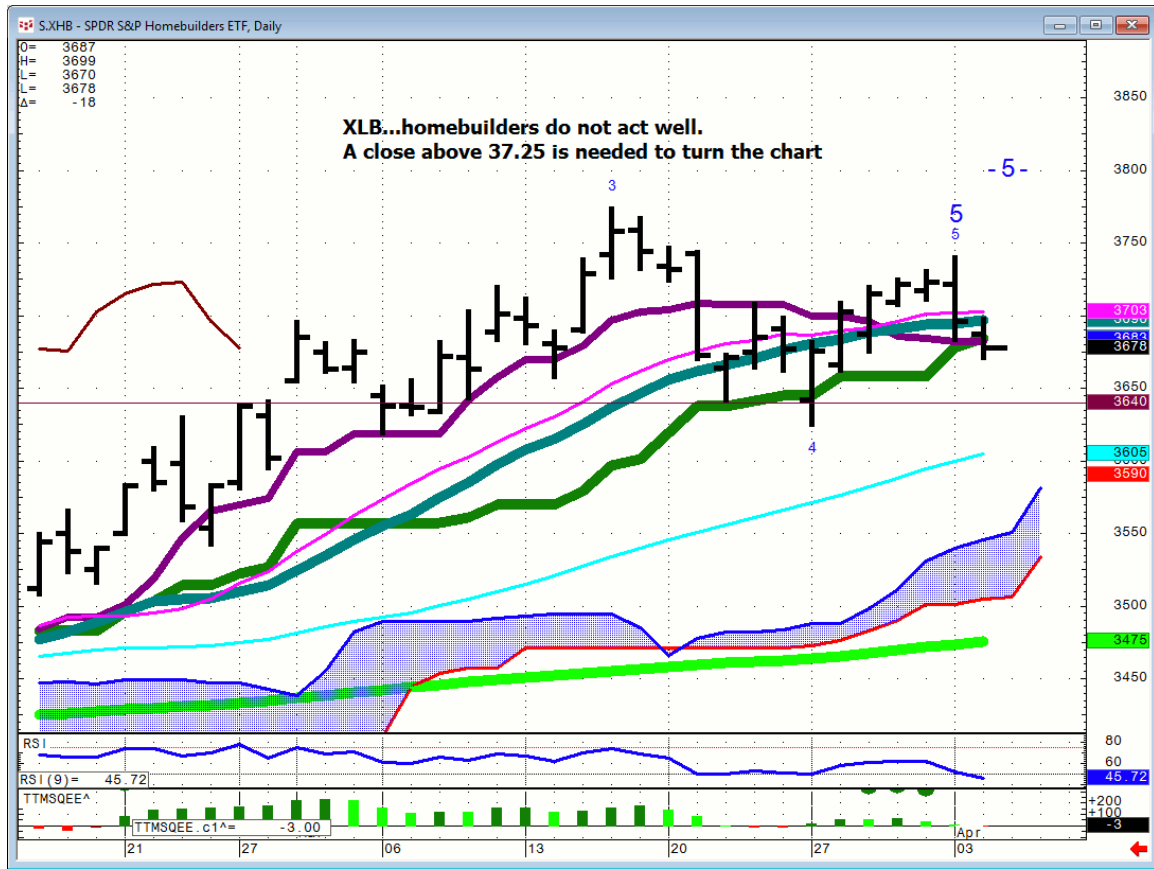
EWV..



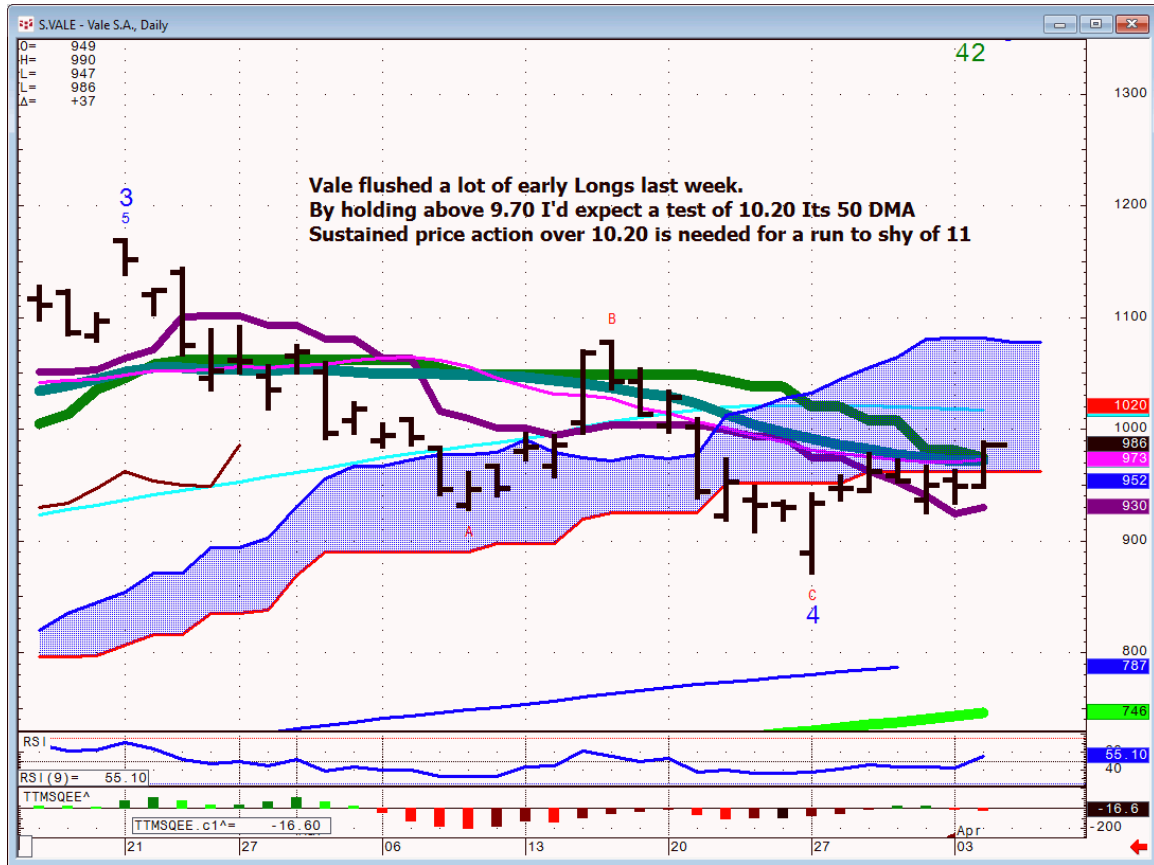
FXI...



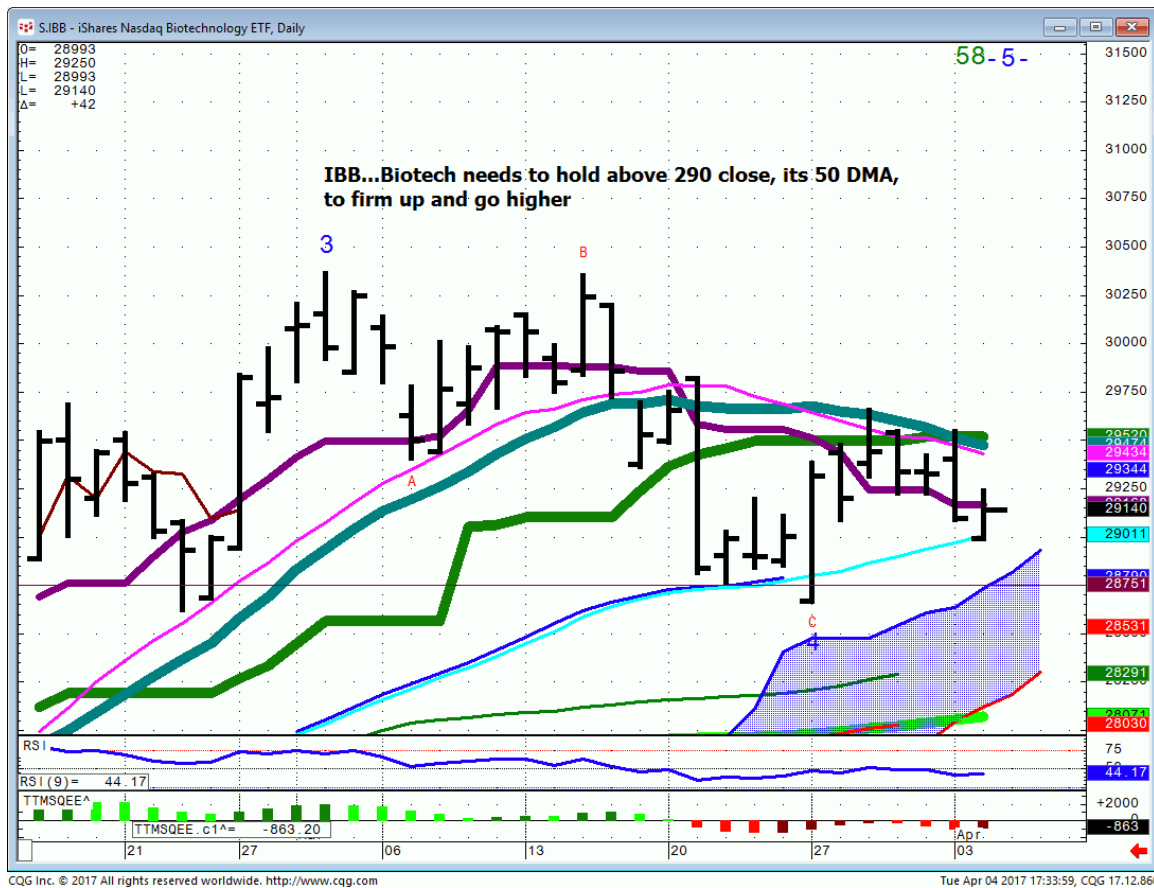
XLB...



VALE...



IBB...there was initial pattern follow through into mvg avg support

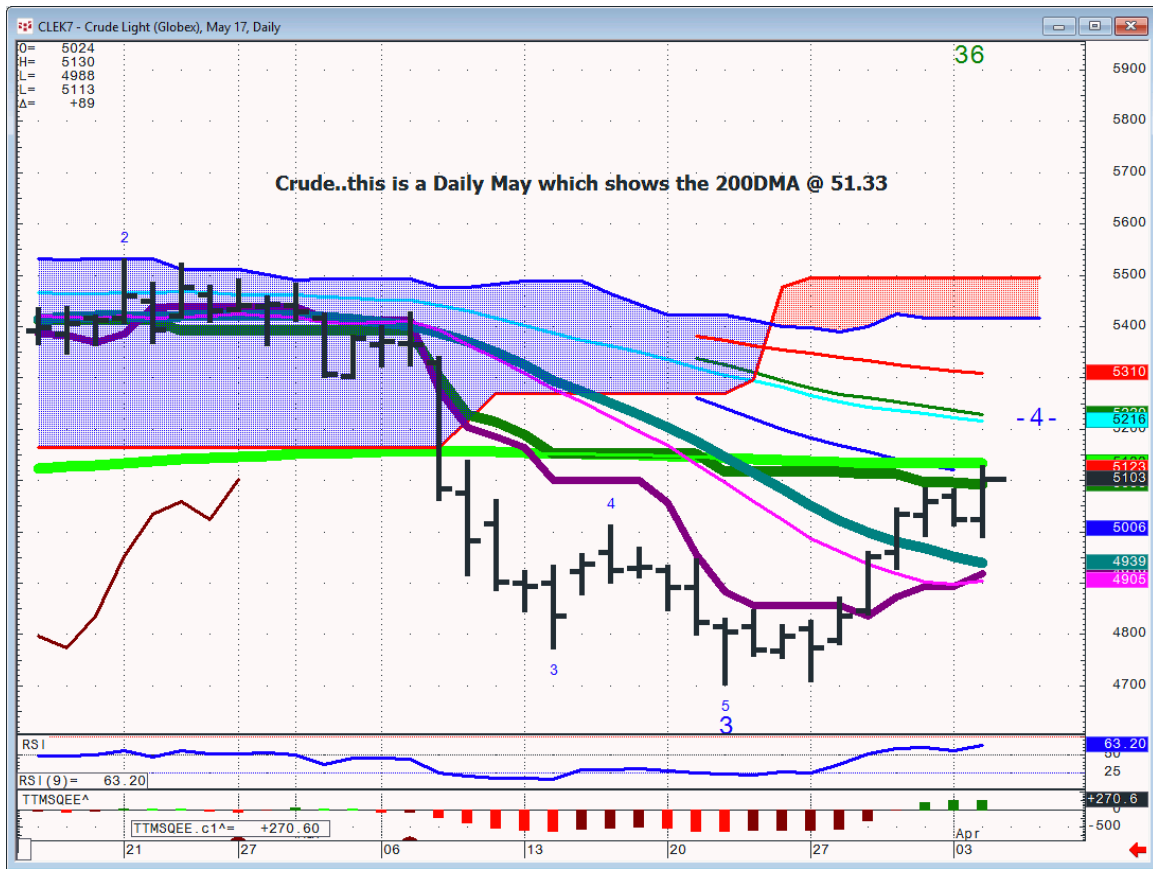


Bonds

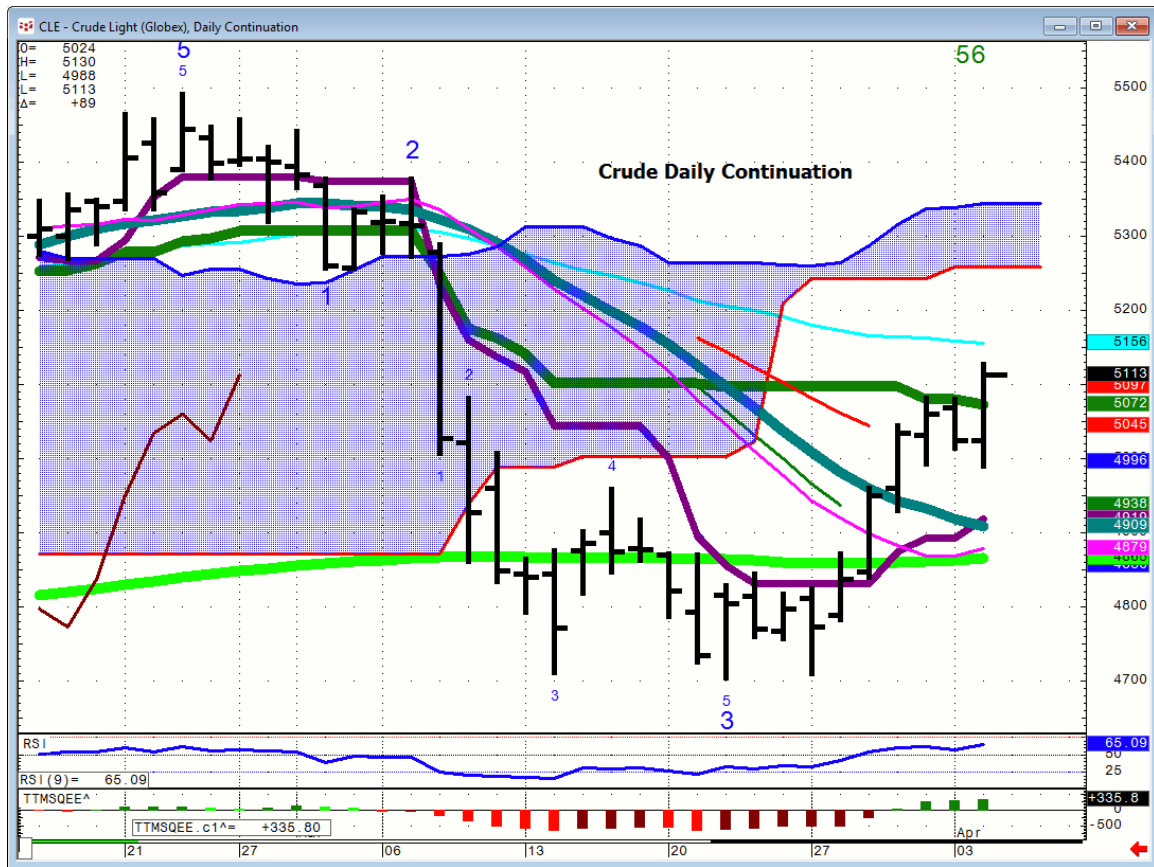
FX

Commodities

Crude...Daily May Pit



Crude...Daily Continuation...[I default to this chart](#)



General Comments or Valuable Insight

**There is a lot of market moving data out tomorrow.
ADP is out Pre-U.S. @ 7:15 CDT.**

**A hot # will see the Equity Indices go bid and the
Treasuries offered.**

The Oil will be in play on the inventory #.

I'll let the different scenarios marinate overnight.

<http://www.whitewavetradingstrategies.com/glossary/>

**WhiteWave Trading Strategies
Independent Research from the Pro's Pro**

**We Trade to Make Money
www.whitewavetradingstrategies.com
info@whitewavetradingstrategies.com**