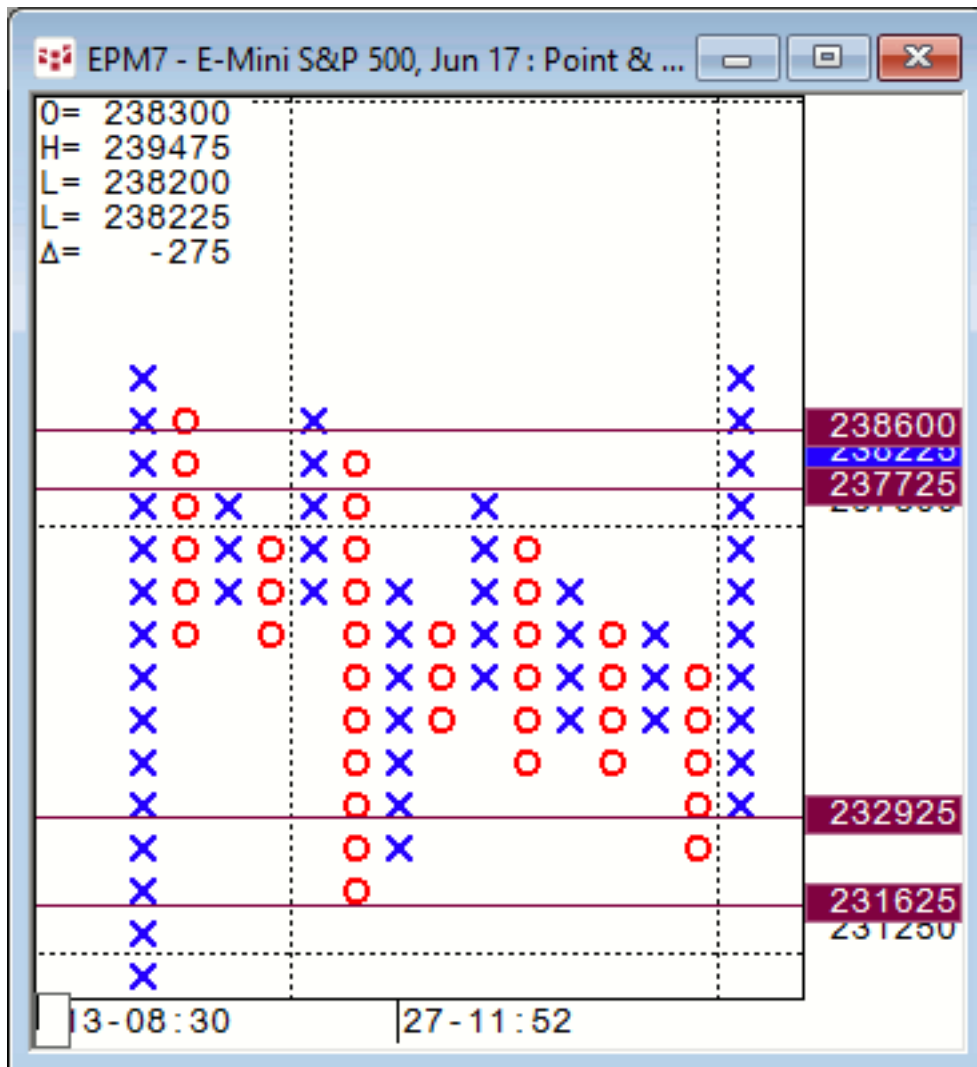




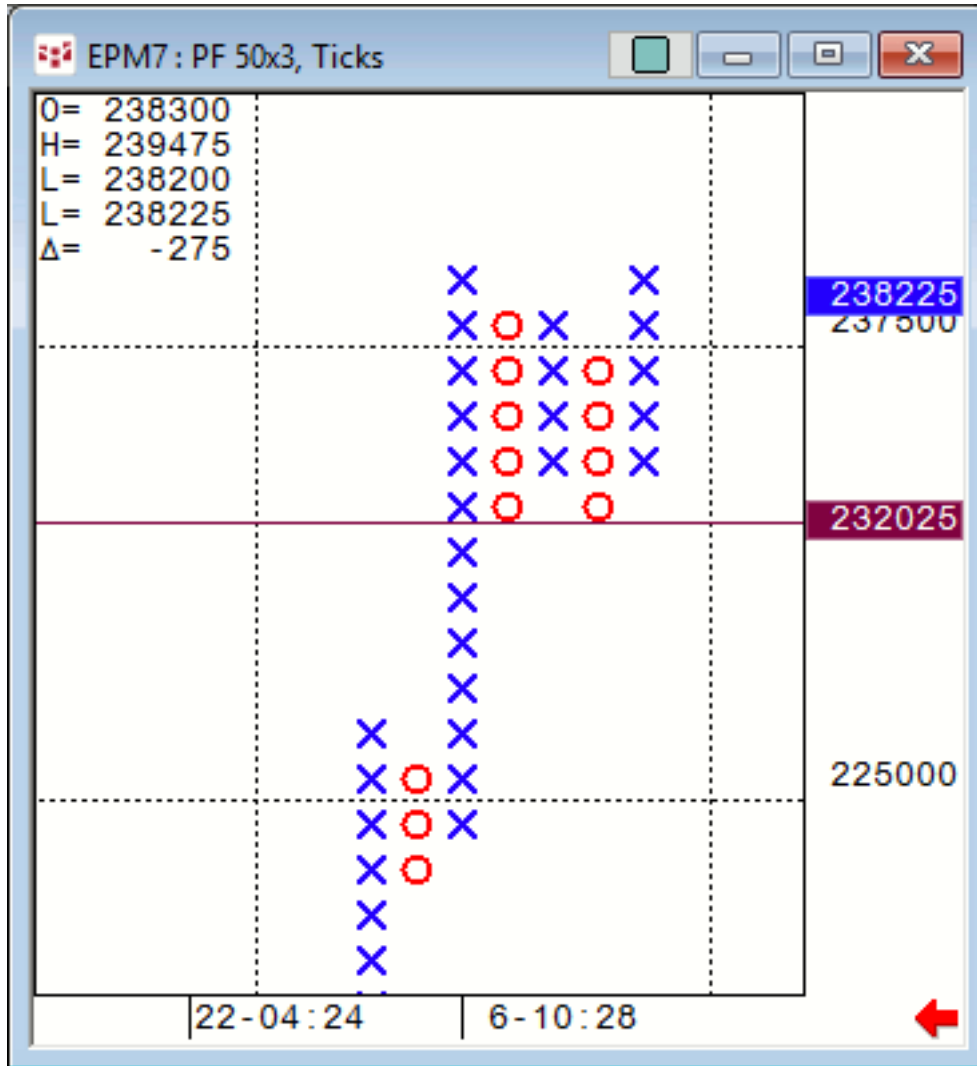
## Daily Market Intelligence

## Stocks

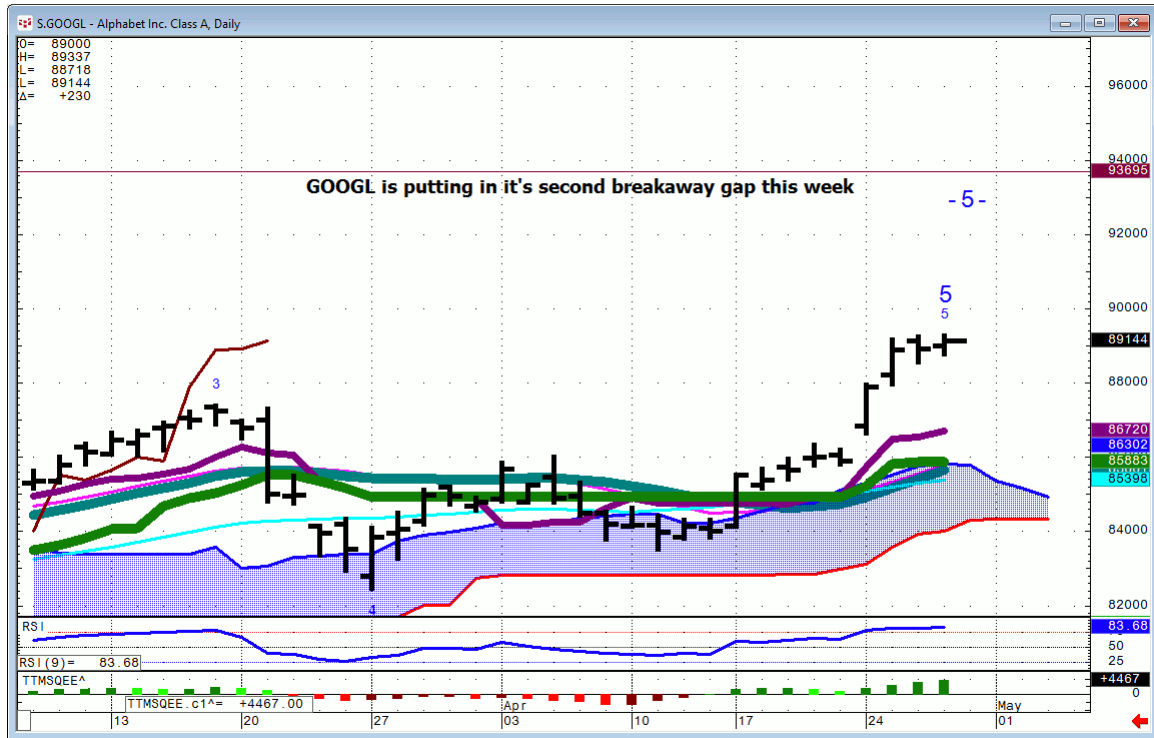
Spu..25X3...no change



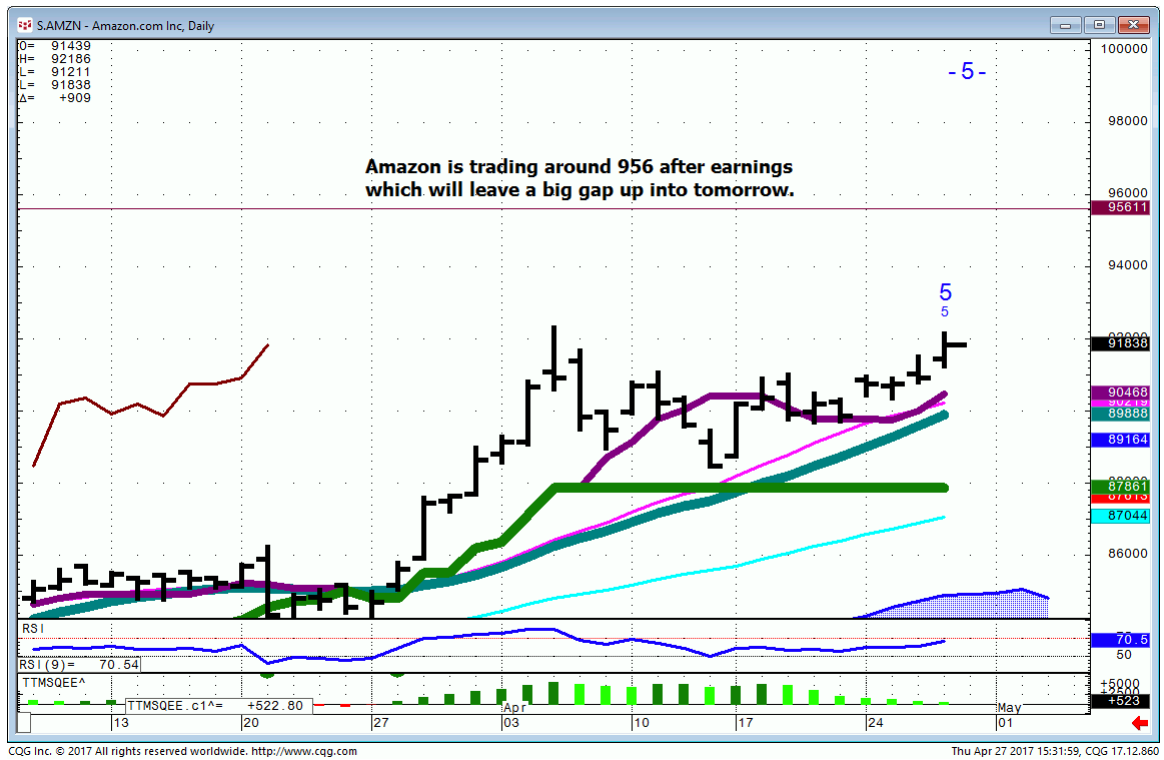
**Spu..50X3...**the range is clear.



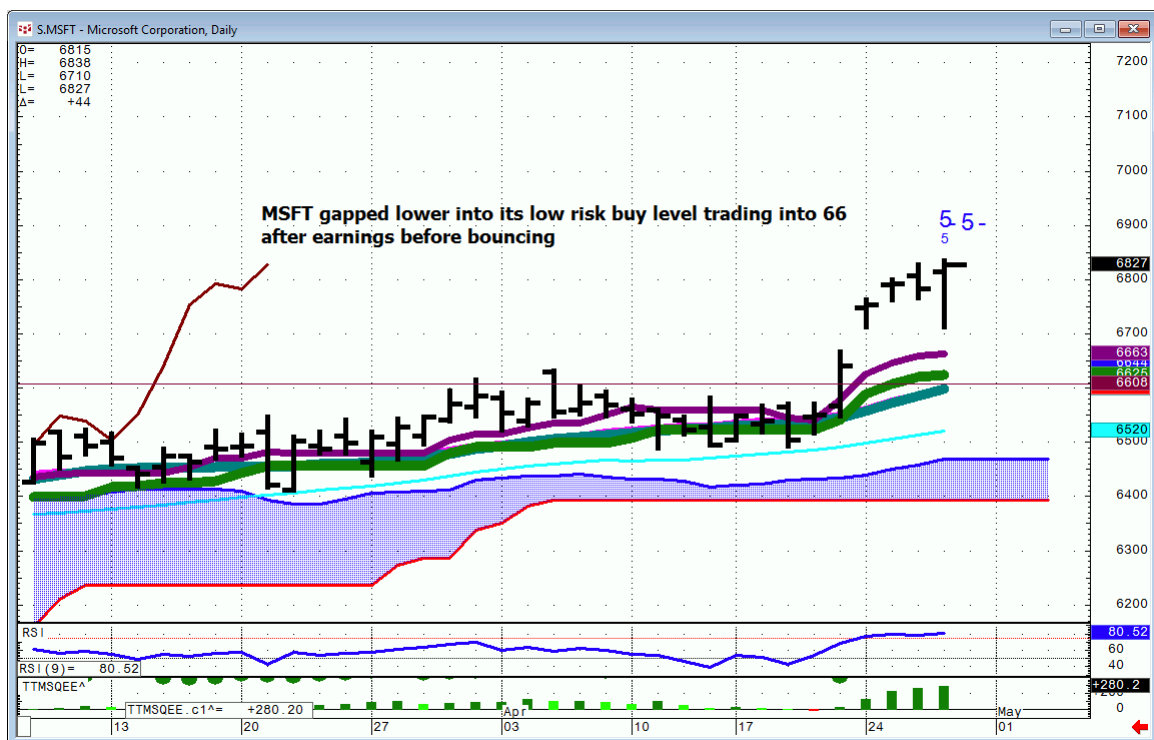
# GOOGL...



# AMZN...



# MSFT...

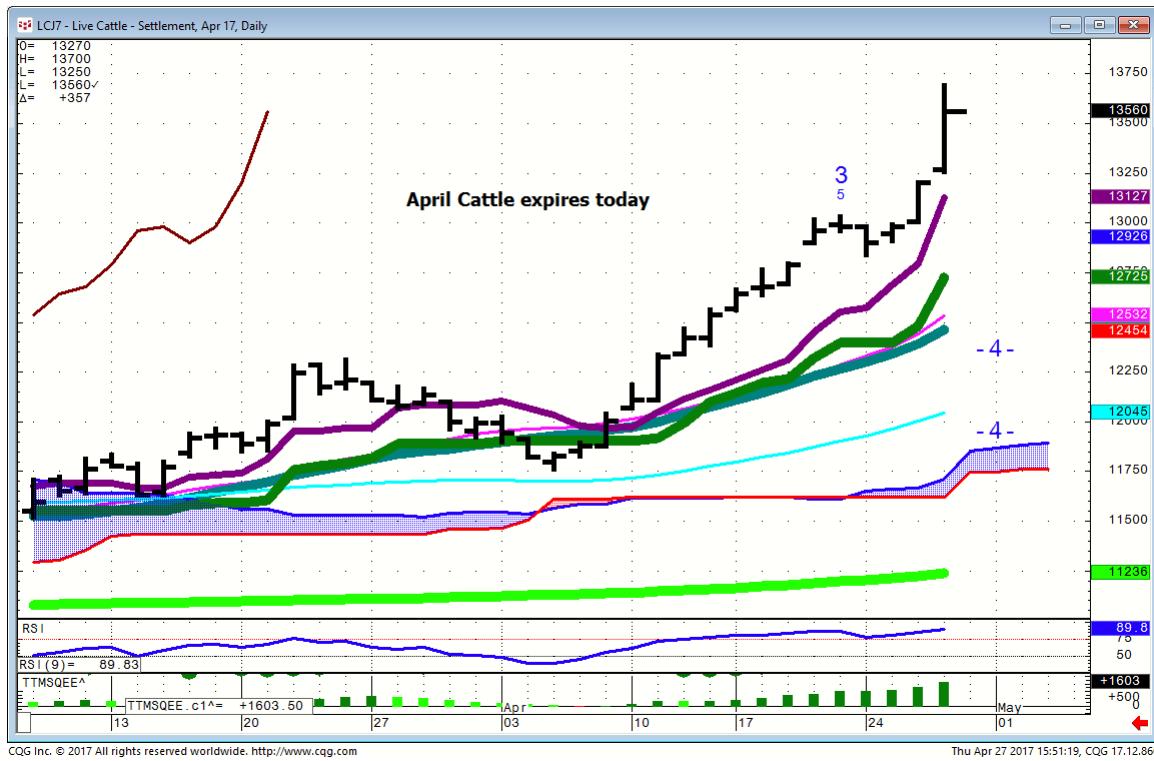


## ***Bonds***

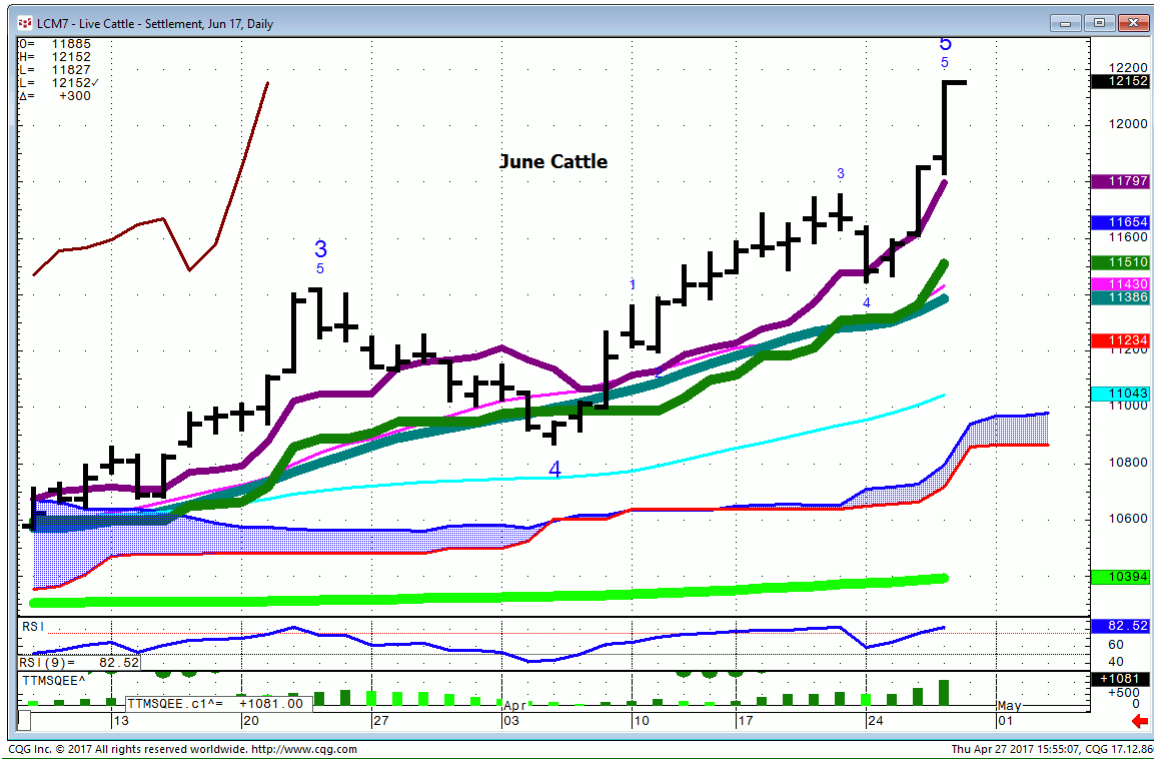
**FX**

## Commodities

### Cattle... (J) Expiration squeeze in front month Cattle



# Cattle...Note the discount to April



**General Comments or Valuable Insight**

**Spu's & DJI have not changed.**

**It's Month end. Pay attention to Month end rotation.**

**MSFT was and will continue to be a low risk buy close to 66. MSFT traded there just after earnings.**

**AMZN and GOOGL will lead tomorrow. Will it be a gap and go or a gap and fade on the opening?**

**<http://www.whitewavetradingstrategies.com/glossary/>**

**WhiteWave Trading Strategies**  
**Independent Research from the Pro's Pro**

**We Trade to Make Money**  
www.whitewavetradingstrategies.com  
info@whitewavetradingstrategies.com