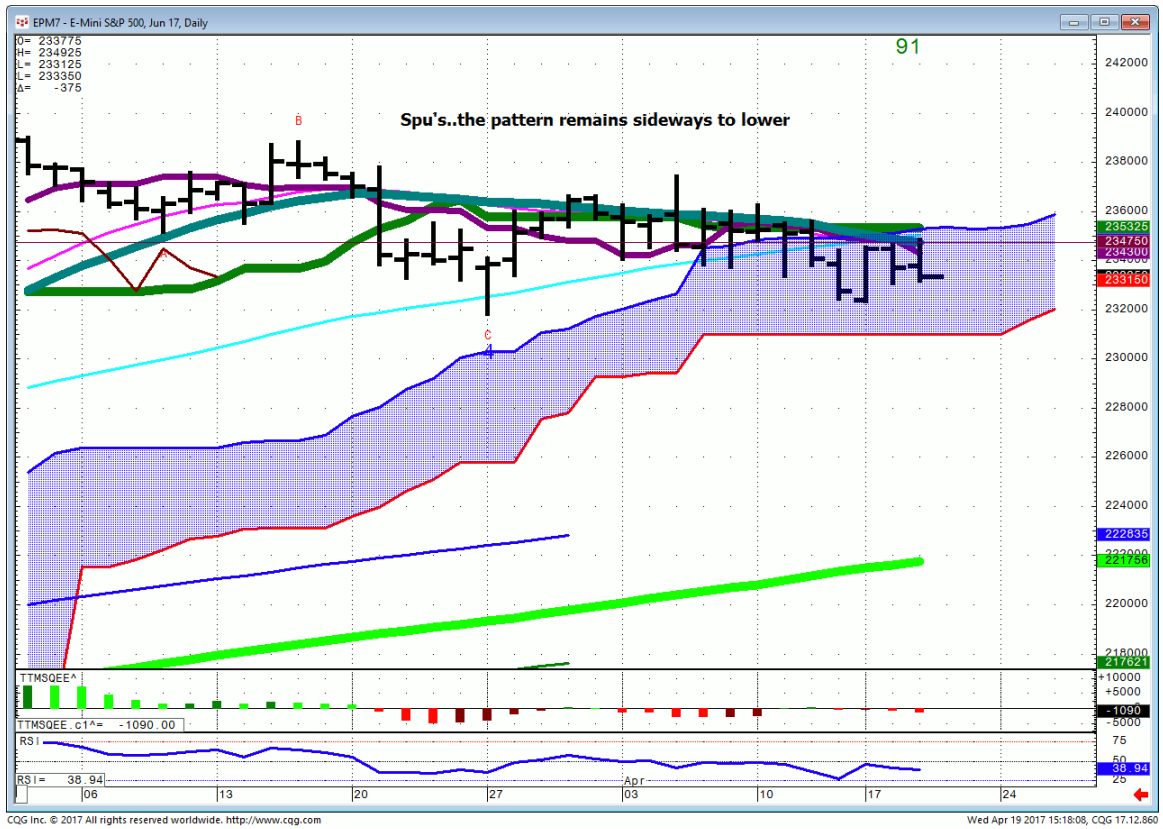




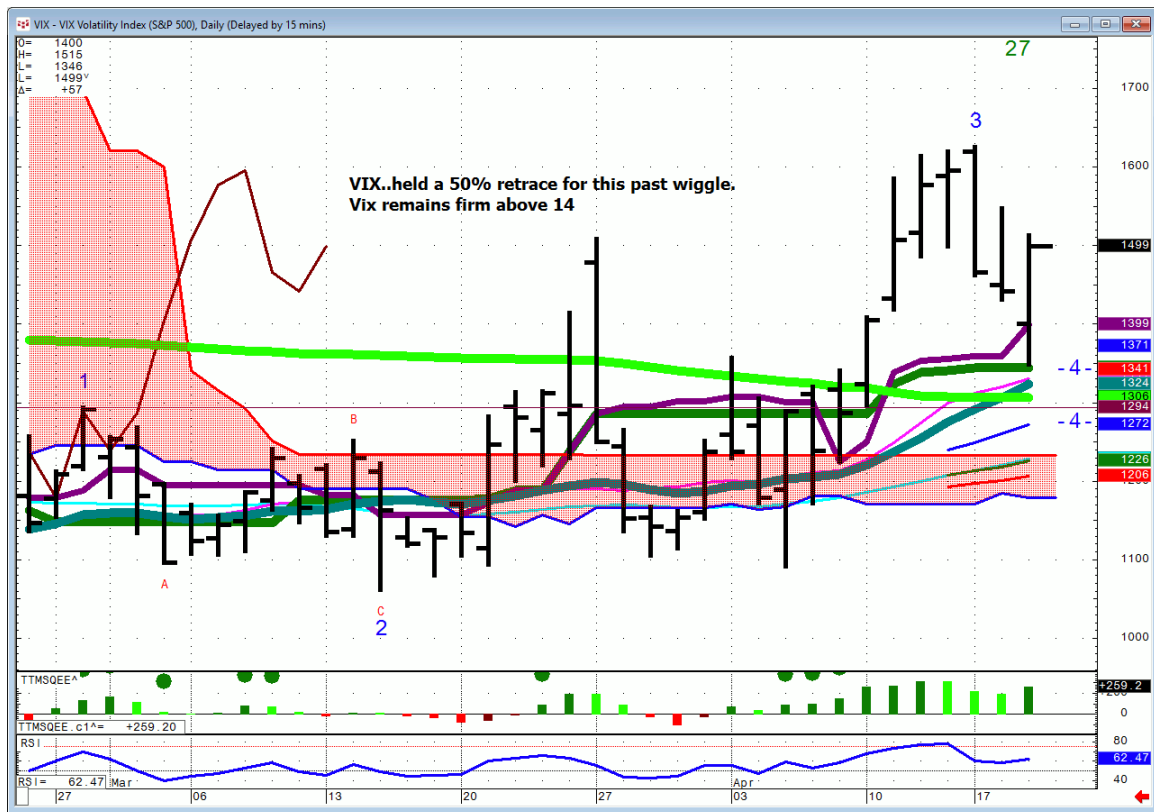
Daily Market Intelligence

Stocks

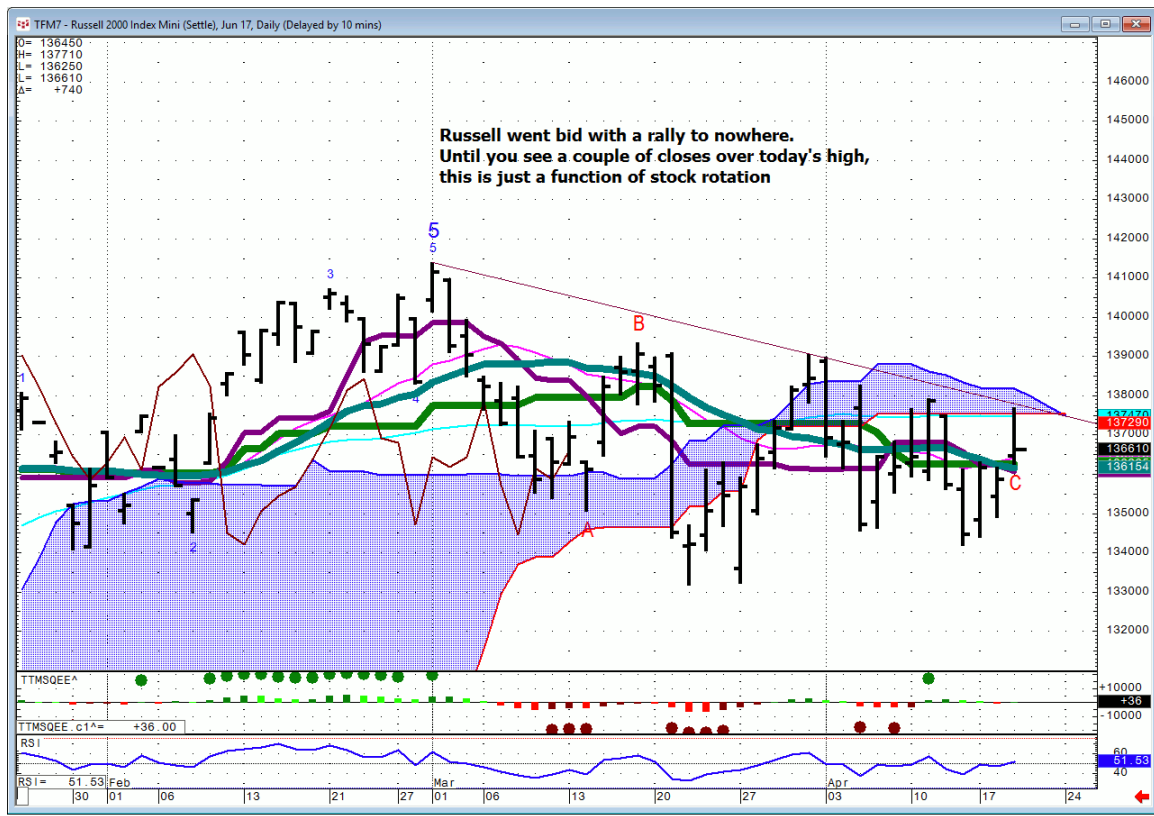
Spu's...



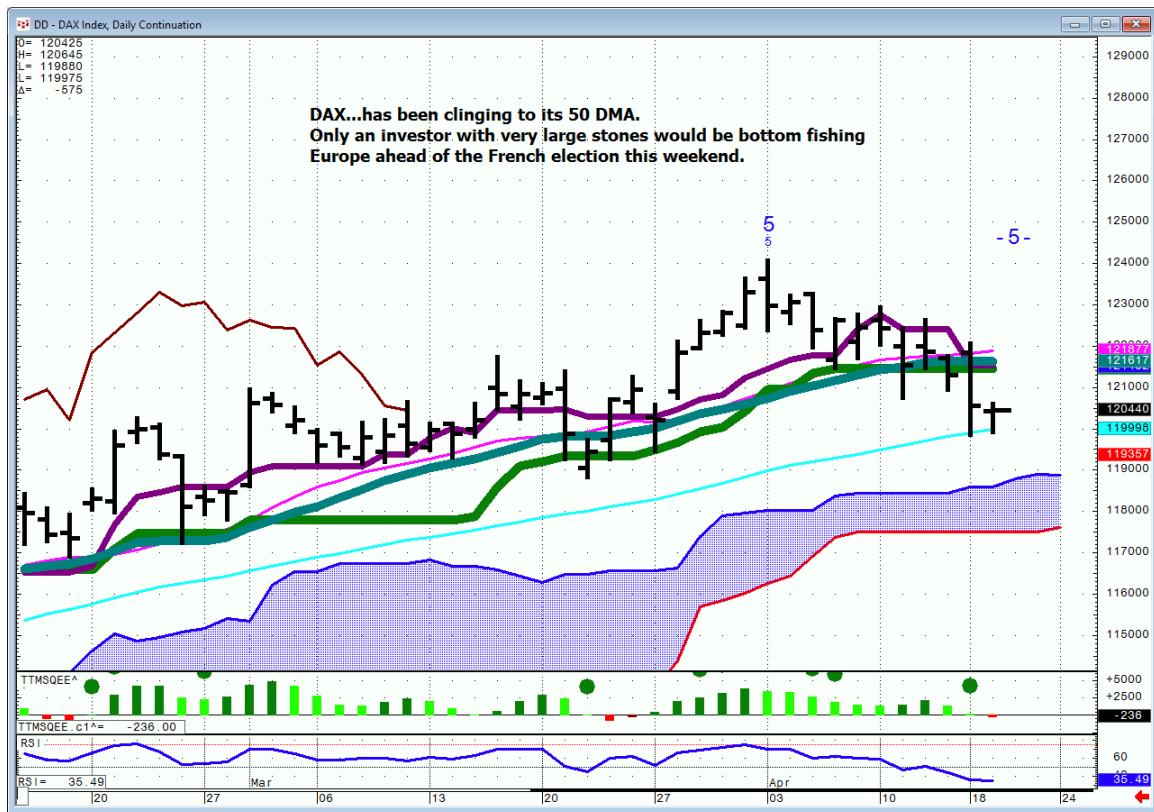
VIX...



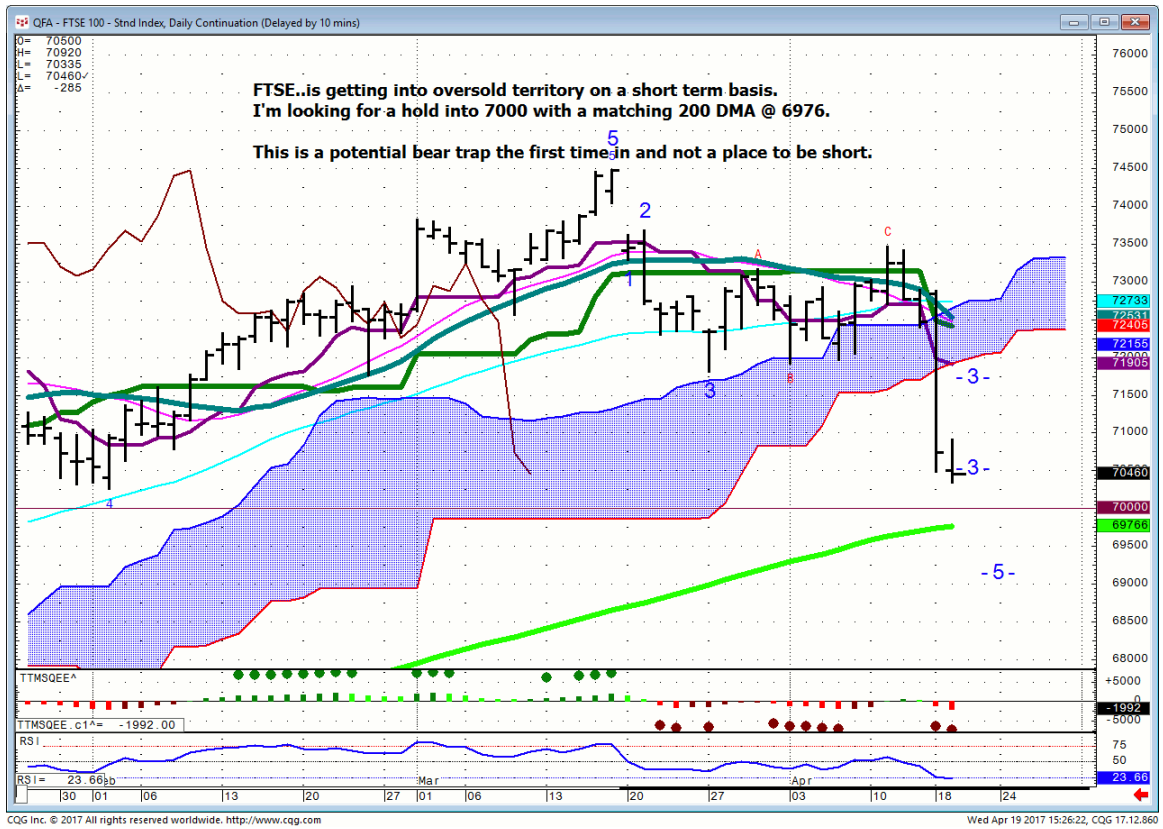
Russell 2000...



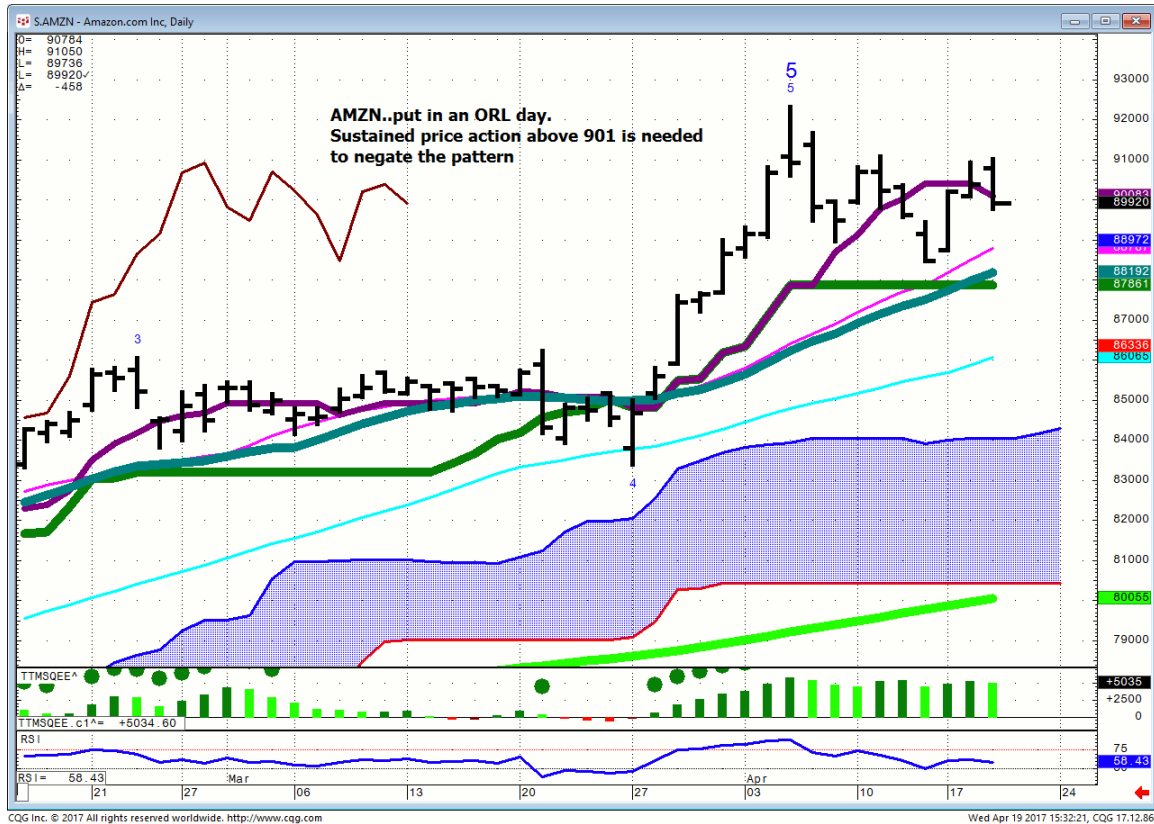
DAX...



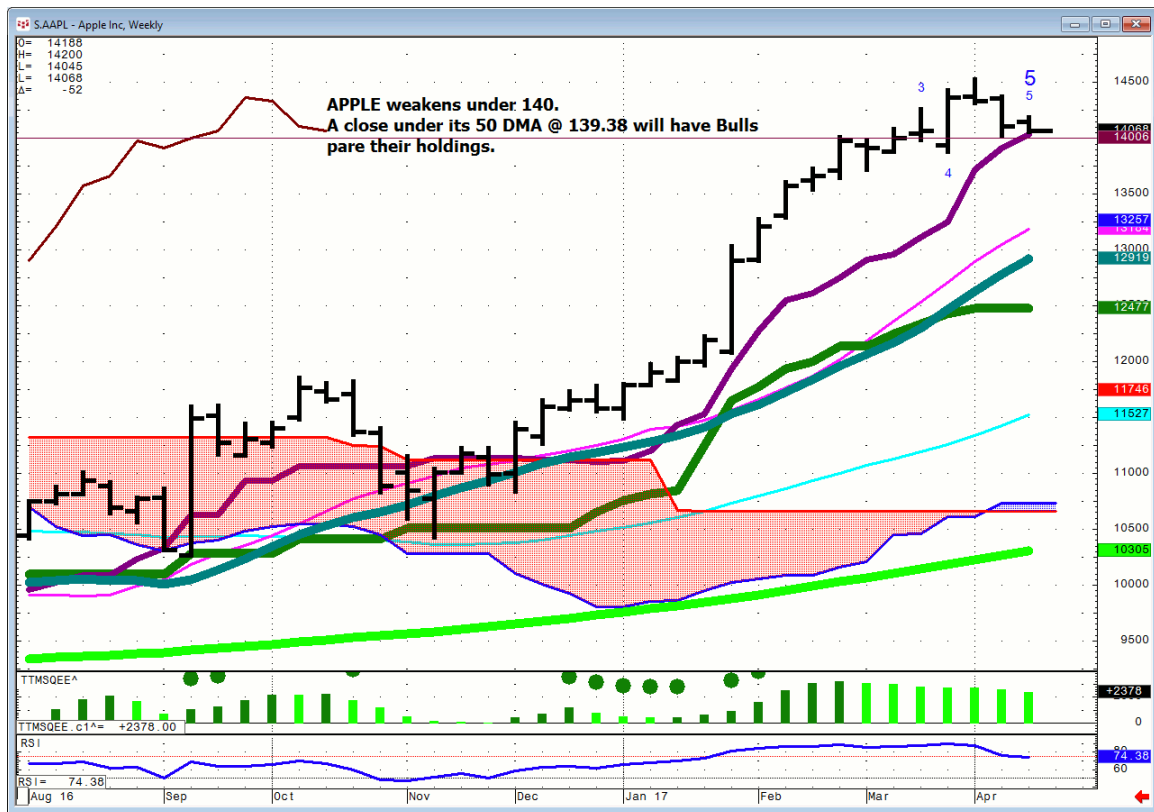
FTSE...



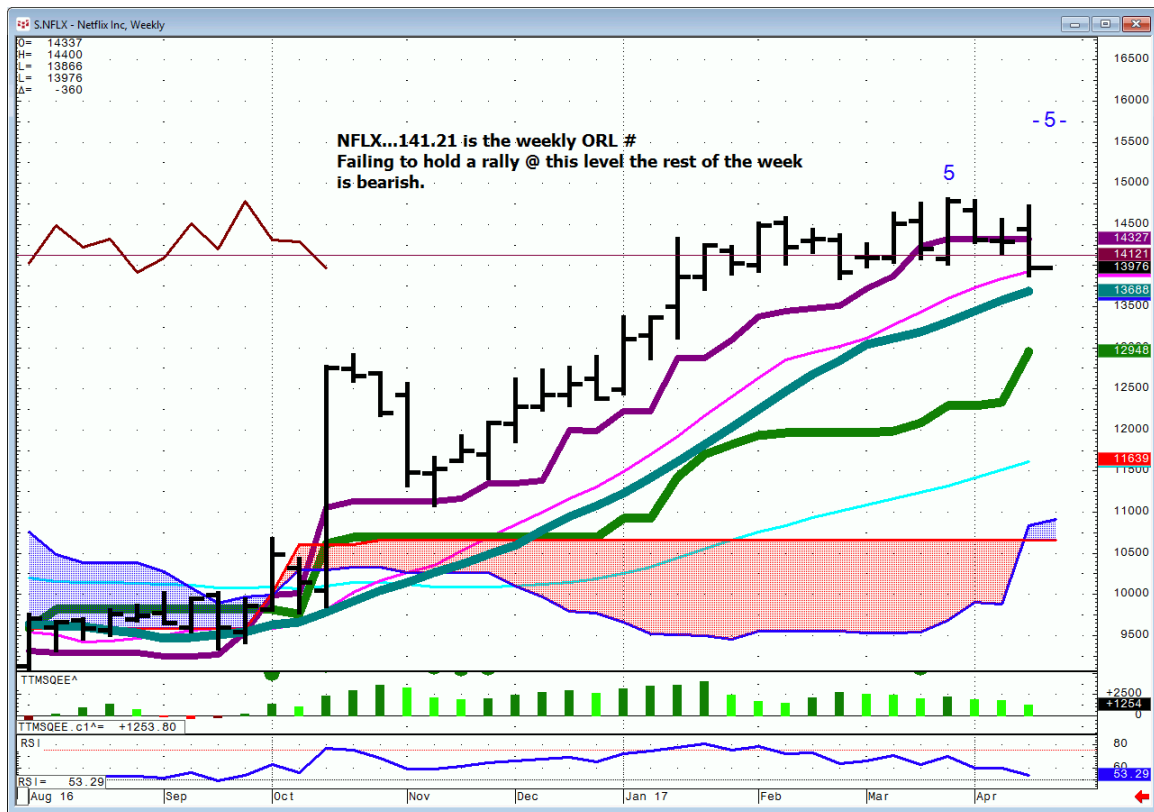
AMZN...



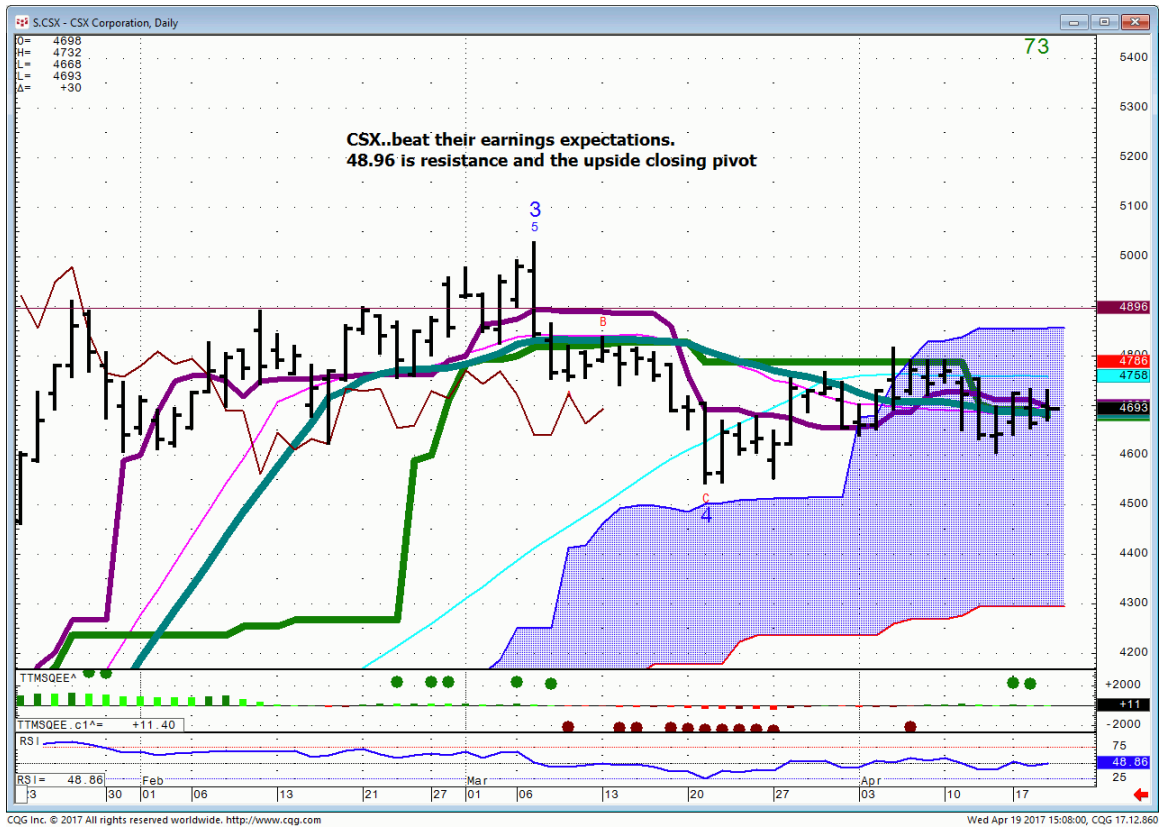
AAPL...



NFLX...Weekly



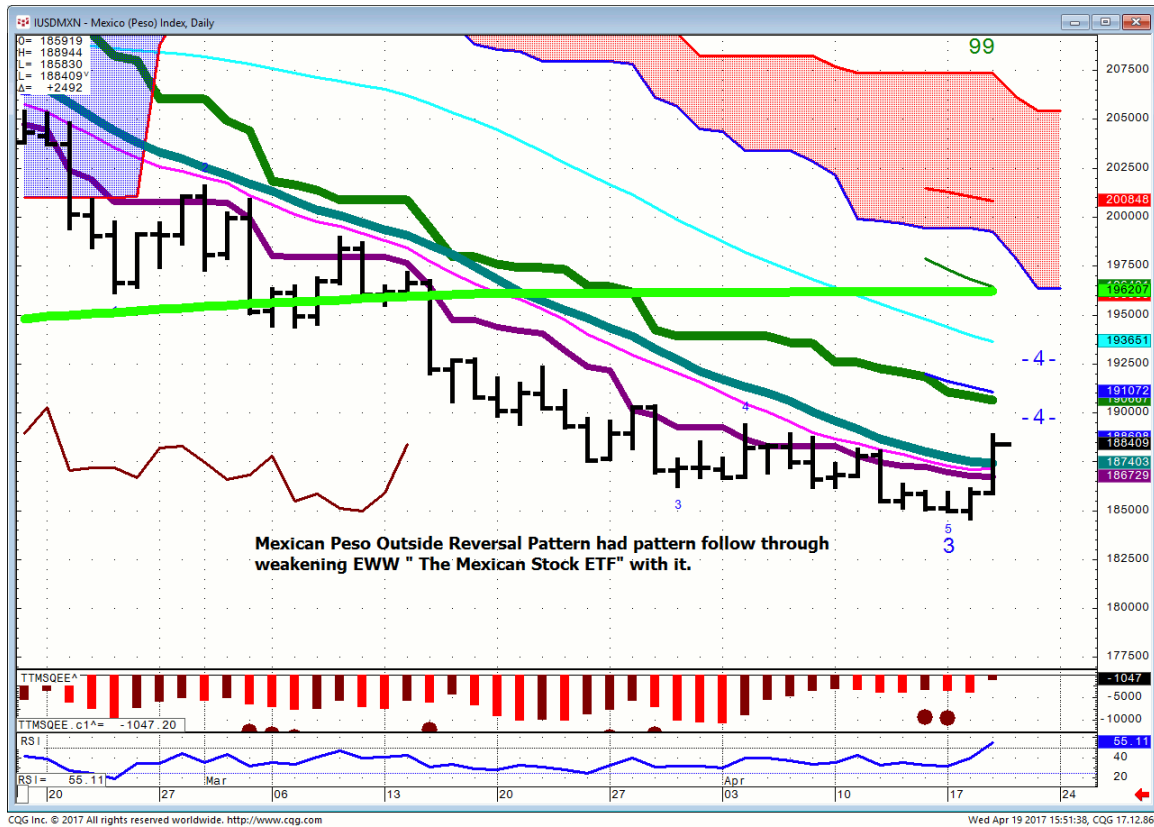
CSX...



Bonds

FX

USD/MXN...there is room for more Peso weakness.



Commodities

General Comments or Valuable Insight

Last night I was hoping for a gap lower blow off low in Goldman to buy, matching up with a lower Spu followed by a rally.

We got the polar opposite, keeping the technical model weak.

It is earnings season so there is plenty of opportunity for the fundamentally accomplished investor to play the lottery.

The broader market remains vulnerable.

Volumes are down going into this weekend French Election.

The Pound has rallied with a weakening FTSE.

After Brexit the implosion of Sterling led to a big FTSE rally.

Now that the Pound has hit descent resistance as the FTSE is approaching a big technical level, it's time watch for a possible turn.

<http://www.whitewavetradingstrategies.com/glossary/>

WhiteWave Trading Strategies
Independent Research from the Pro's Pro

We Trade to Make Money

www.whitewavetradingstrategies.com

info@whitewavetradingstrategies.com

