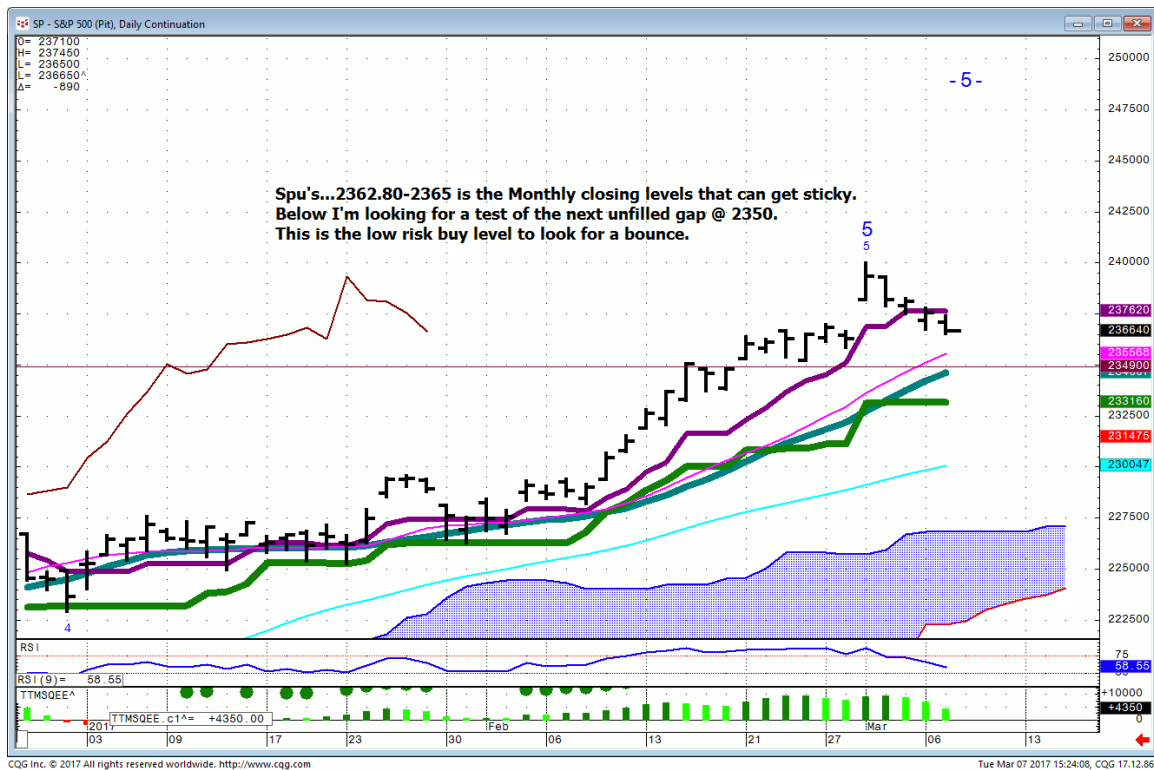




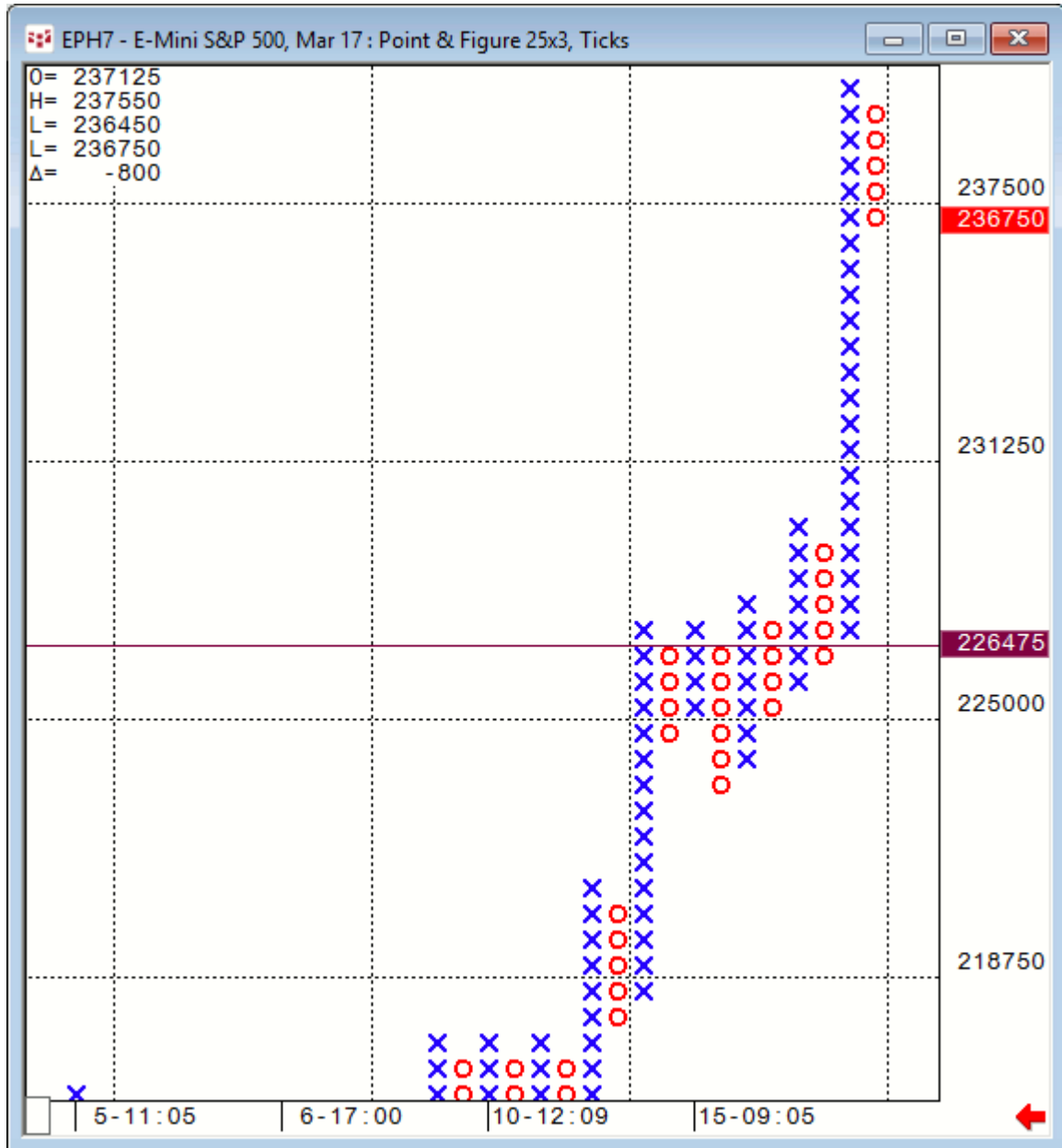
Daily Market Intelligence

Stocks

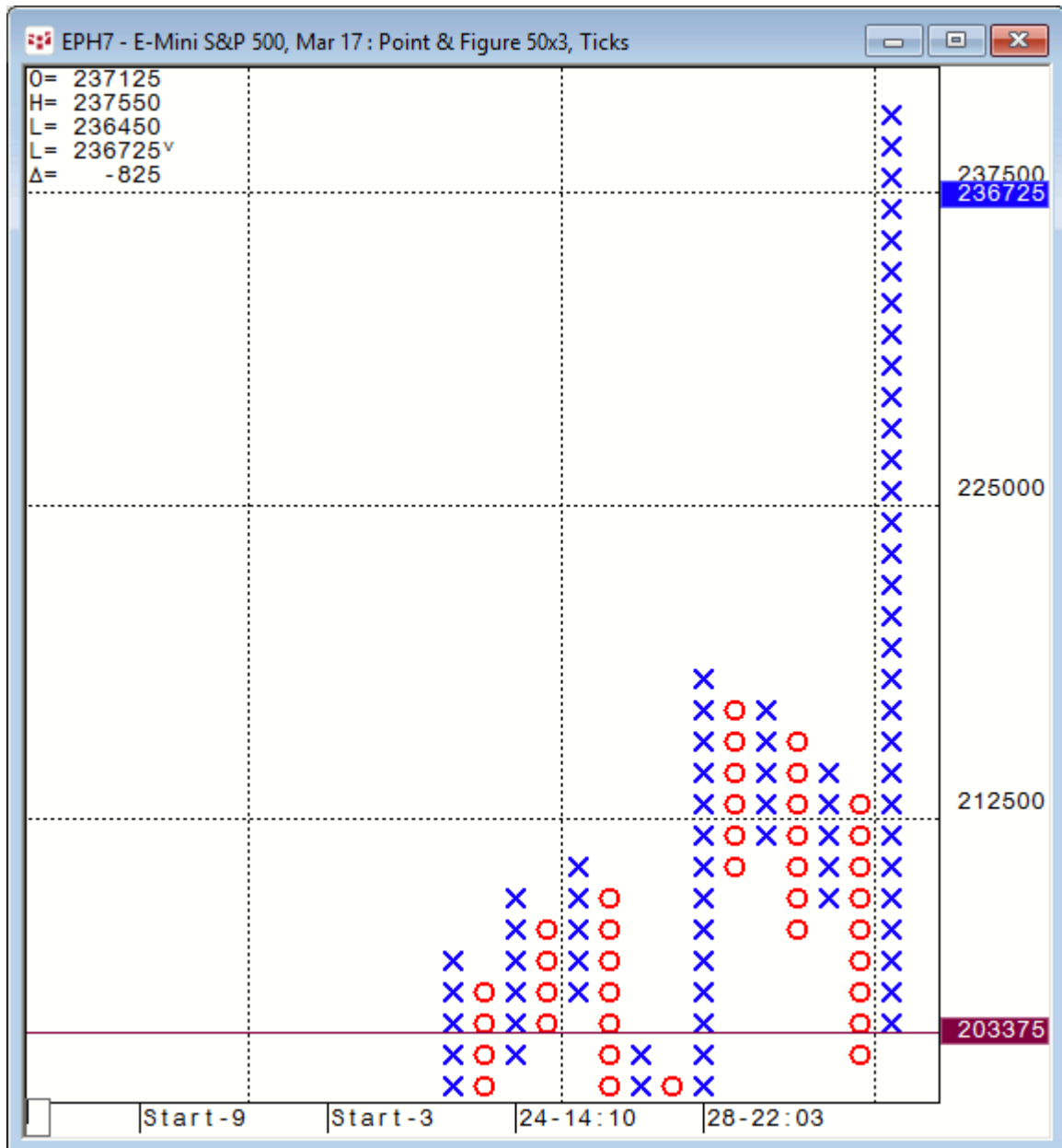
Spu's...Pit Daily..



Spu..Mini 25X3 medium-term Point & Figure

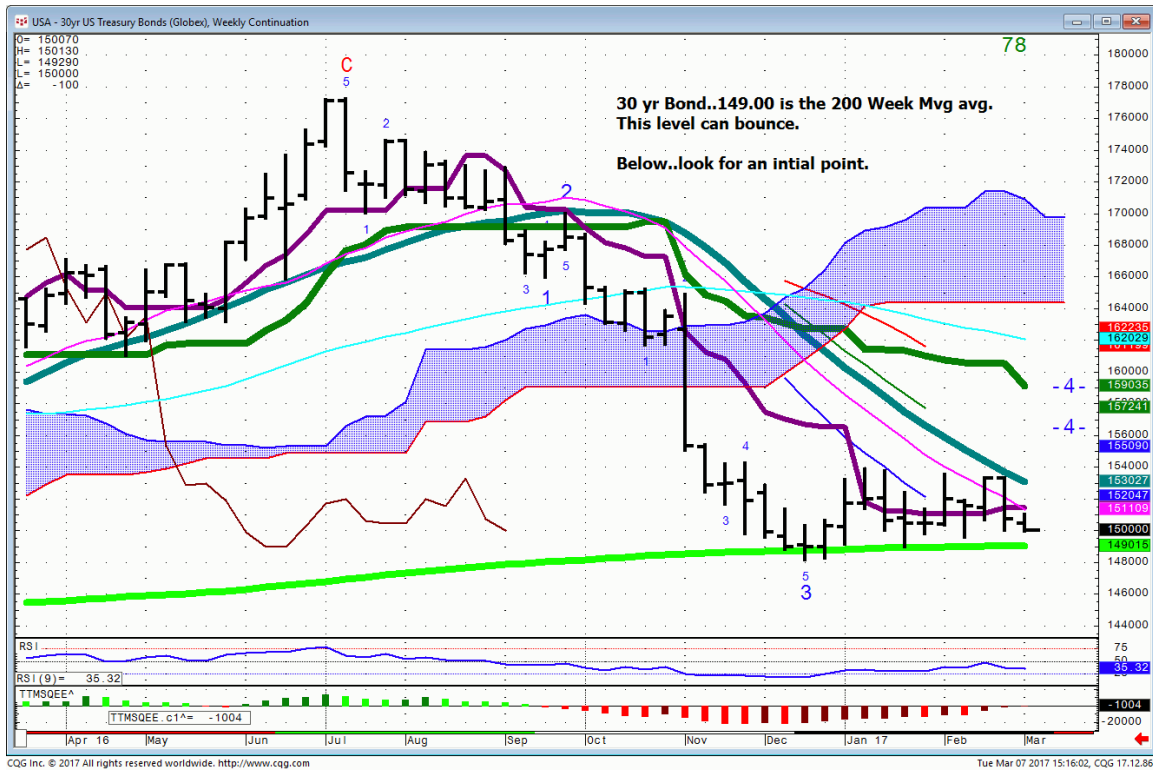


Spu..Mini 50X3 long-term Point & Figure..no reversal yet

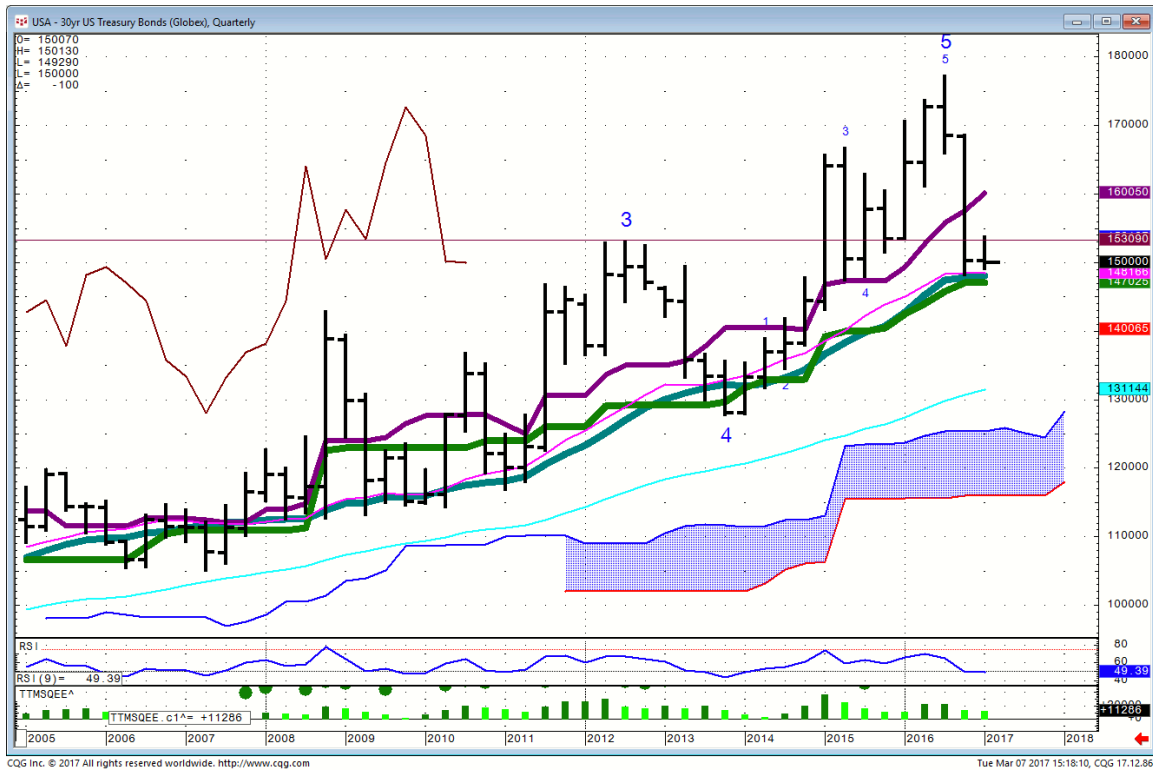


Bonds

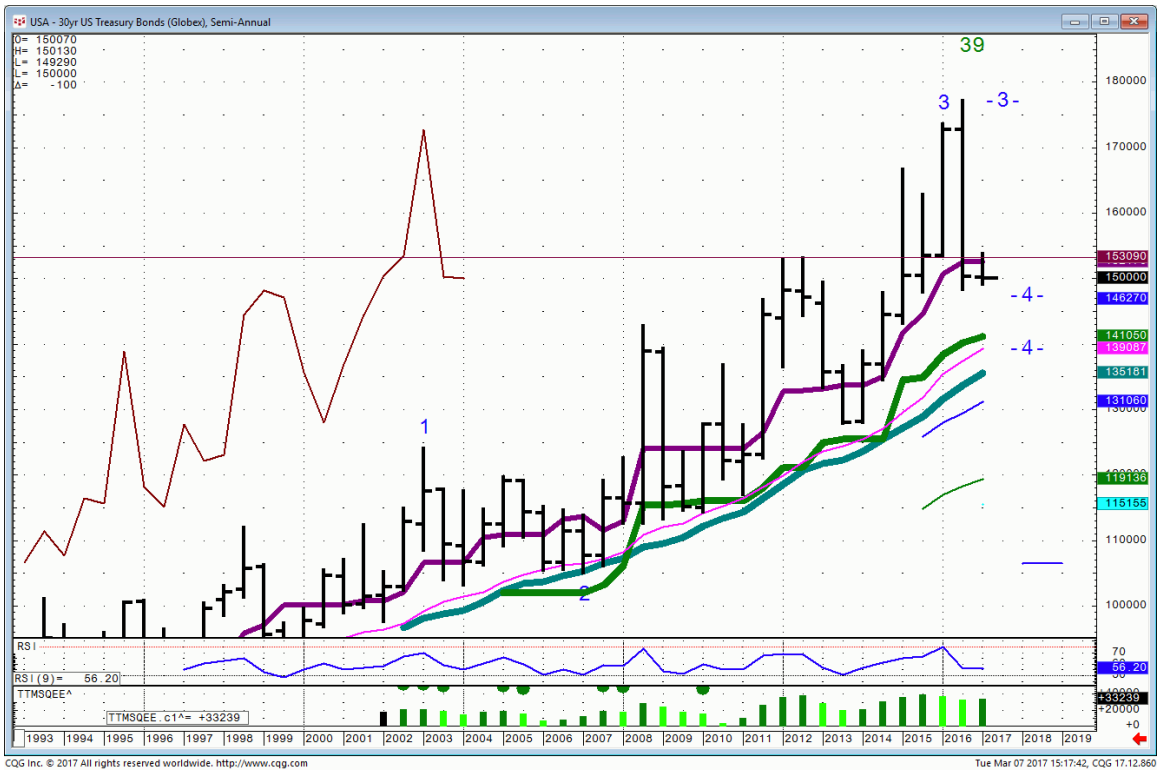
30 yr. Bond...(H) March Weekly



30 yr. Bond...(H) March Qtrly..the levels have not changed in two months



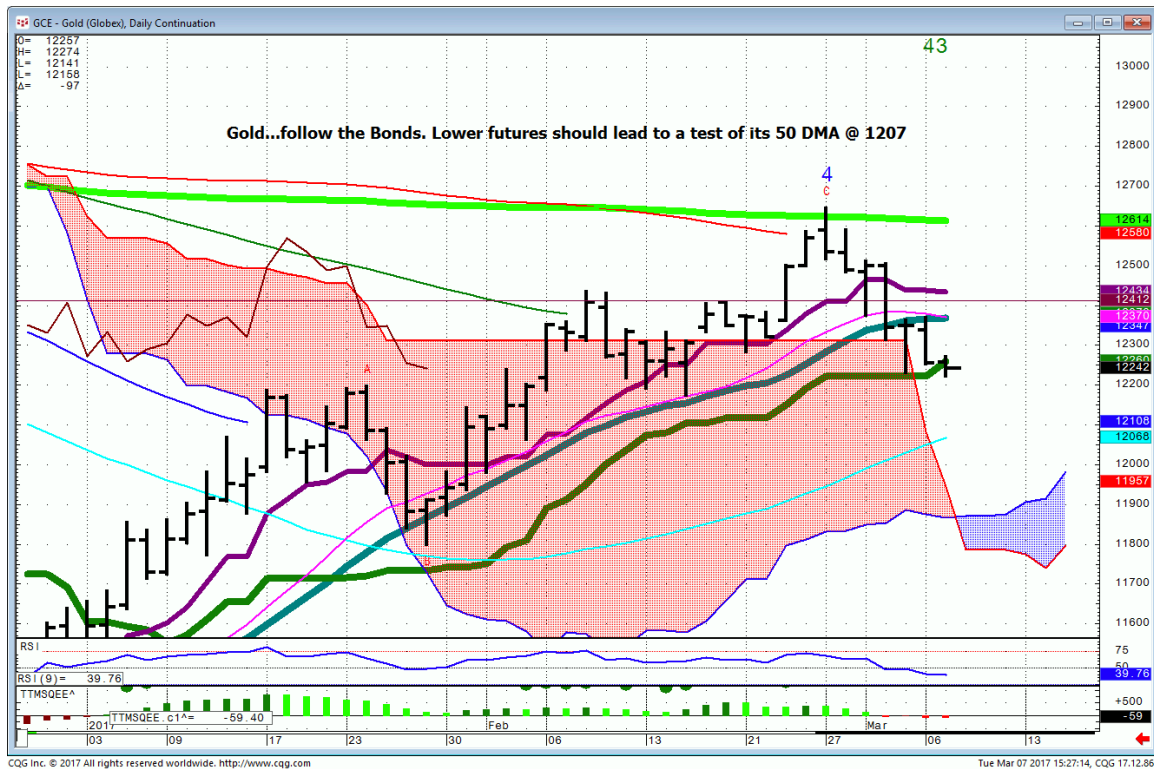
30 yr. Bond...(H) March Semi-Annual



FX

Commodities

Gold...



General Comments or Valuable Insight

It's the mid-week shuffle with ADP & Bund expiration.

Can the Bonds & Equity Indices both trade lower after ADP or will they diverge?

So far the Treasuries are pricing in hikes and ignoring the generally defensive board.

Whatever happens with the Indices the short end of the curve will be active on a hot #. One would think lower.

Spu's.. looking to buy on a spike lower into 2349 for a bounce into payrolls Friday.

Gold & Currencies...follow the 30 yr. Bonds. They tend to track one another.

<http://www.whitewavetradingstrategies.com/glossary/>

WhiteWave Trading Strategies
Independent Research from the Pros Pro

We Trade to Make Money
www.whitewavetradingstrategies.com
info@whitewavetradingstrategies.com