



Daily Market Intelligence

Stocks

EWG...Germany iShares



TAP...Molson Coors Monthly...potential ORH Month



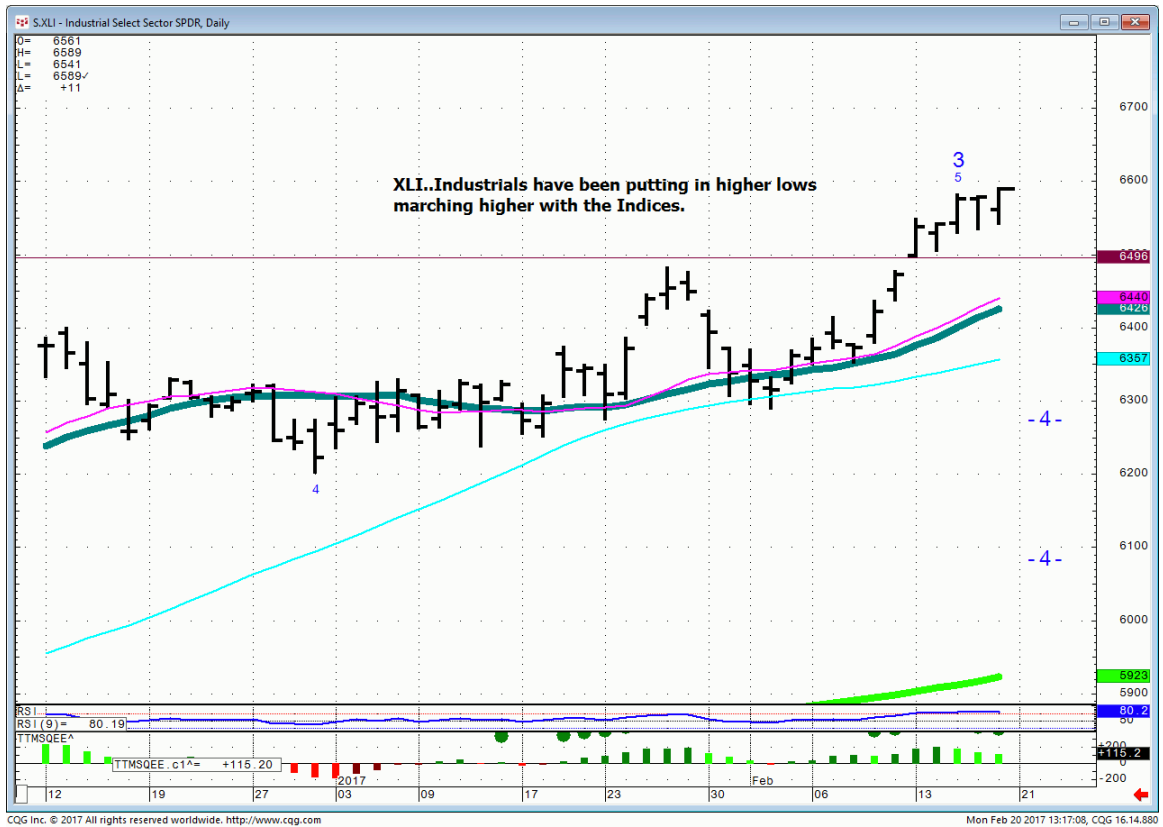
TAP....Molson Coors Weekly...Brewers have been out of favor for a long time. They are worth watching again as they've had 20-30 % sell offs.



CRM...Monthly



XLI...



TSLA..



NFLX...



UNH...Weekly..old allegations hit the stock Friday



Bonds

30 Yr. Bonds...151.16 is mid range for the year. Do not over trade this area.



FX

Commodities

Gold...



Copper..



General Comments or Valuable Insight

There was no news to derail the Bull Run over the weekend.

The Currencies and Bonds will get active going into Wednesday's afternoon U.S. session.

More in the A.M.

<http://www.whitewavetradingstrategies.com/glossary/>

WhiteWave Trading Strategies
Independent Research from the Pros Pro

We Trade to Make Money
www.whitewavetradingstrategies.com
info@whitewavetradingstrategies.com