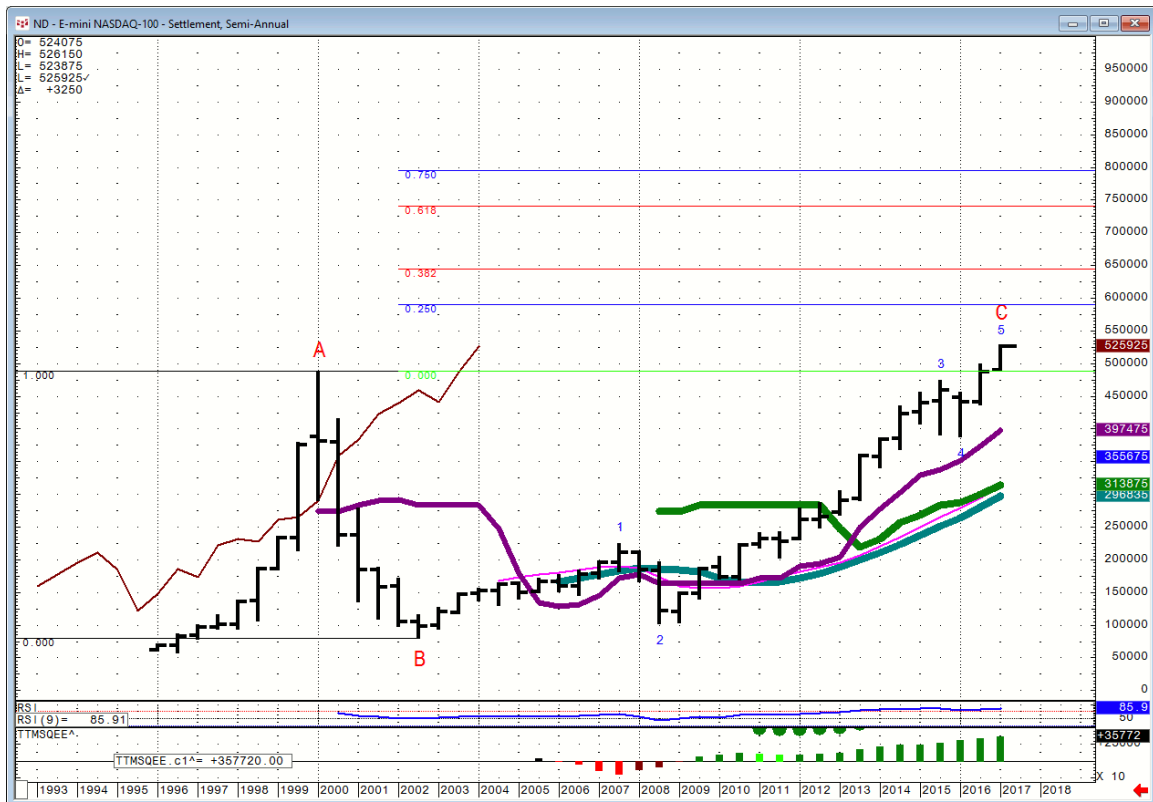




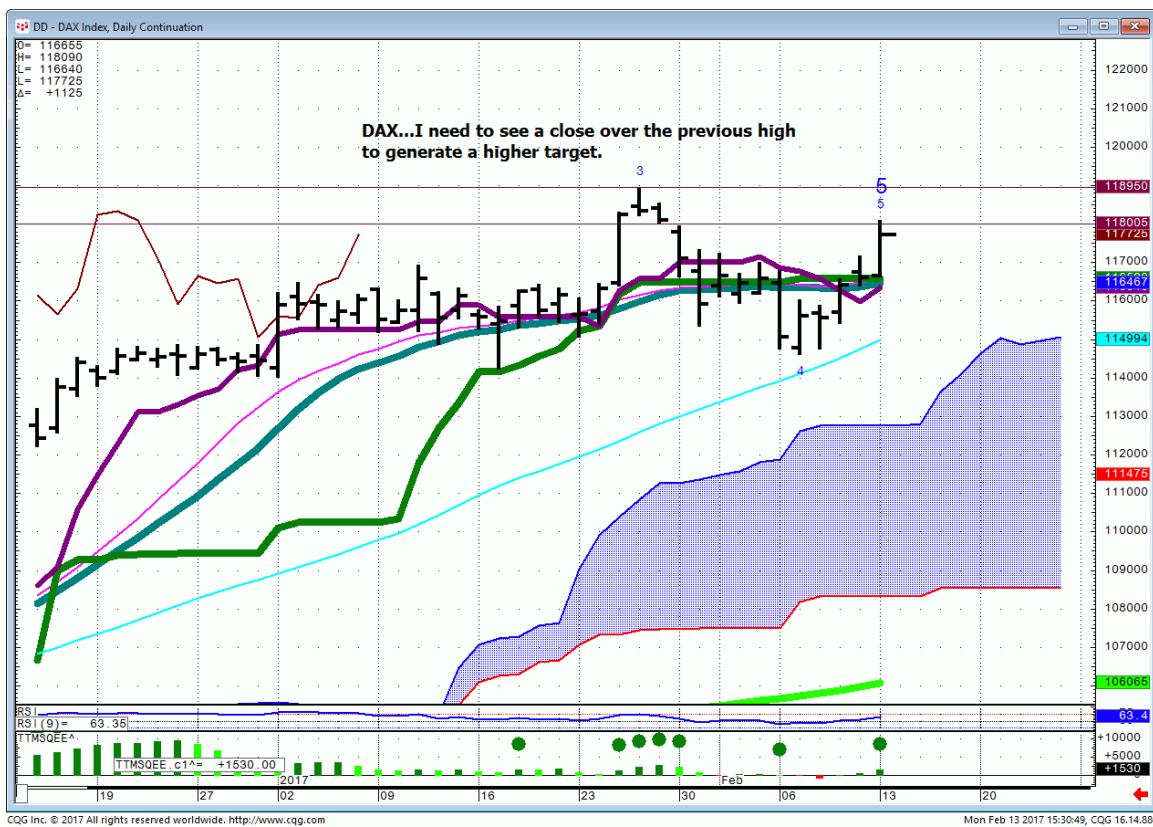
## Daily Market Intelligence

## Stocks

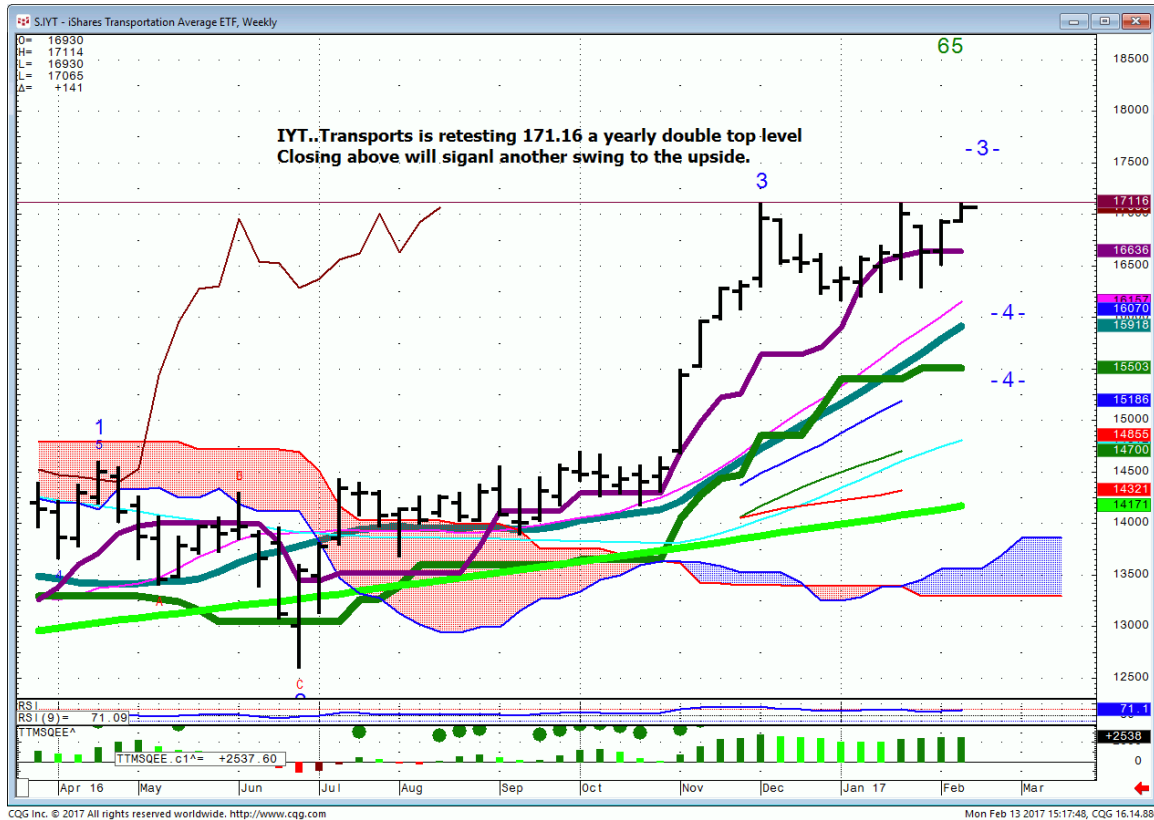
**Nasd 100...**Fib targets are predicated on the particular swing you're measuring. Yes, it's getting juicy but there are higher long-term targets.



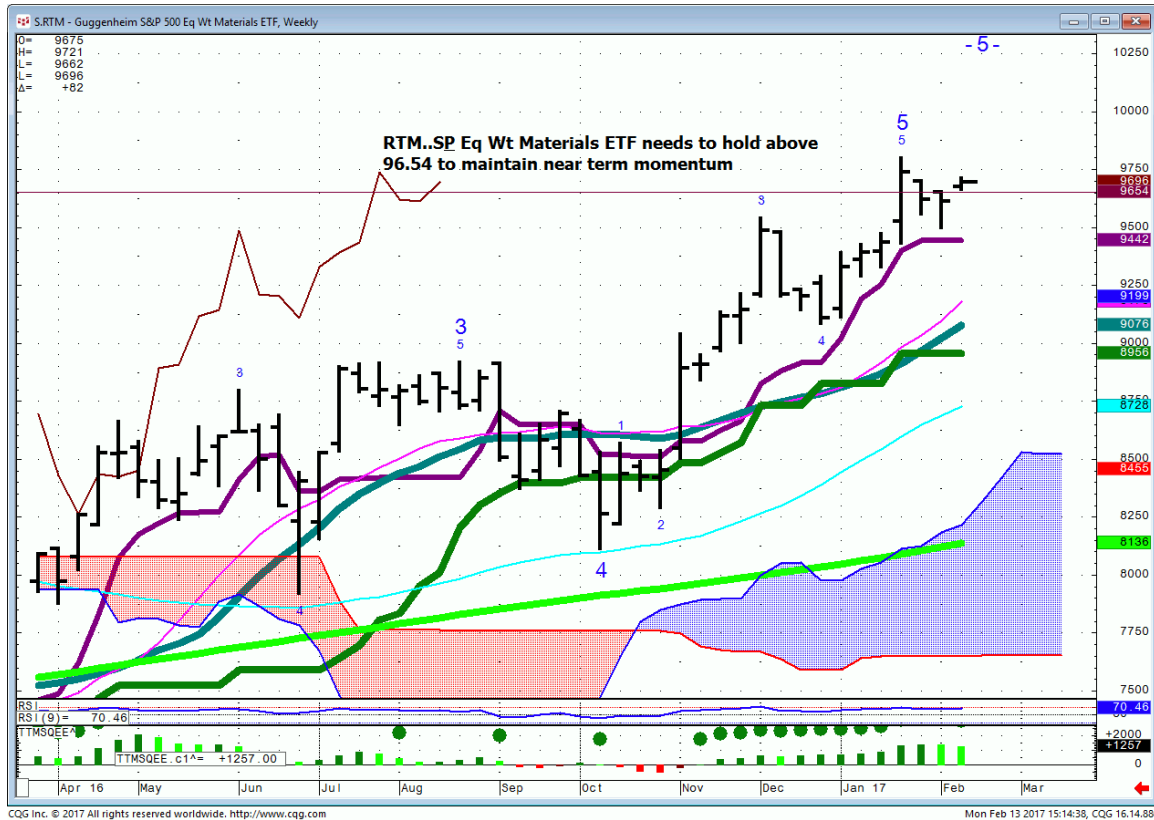
**DAX...the previous high was 11,895 on 1/23/17**



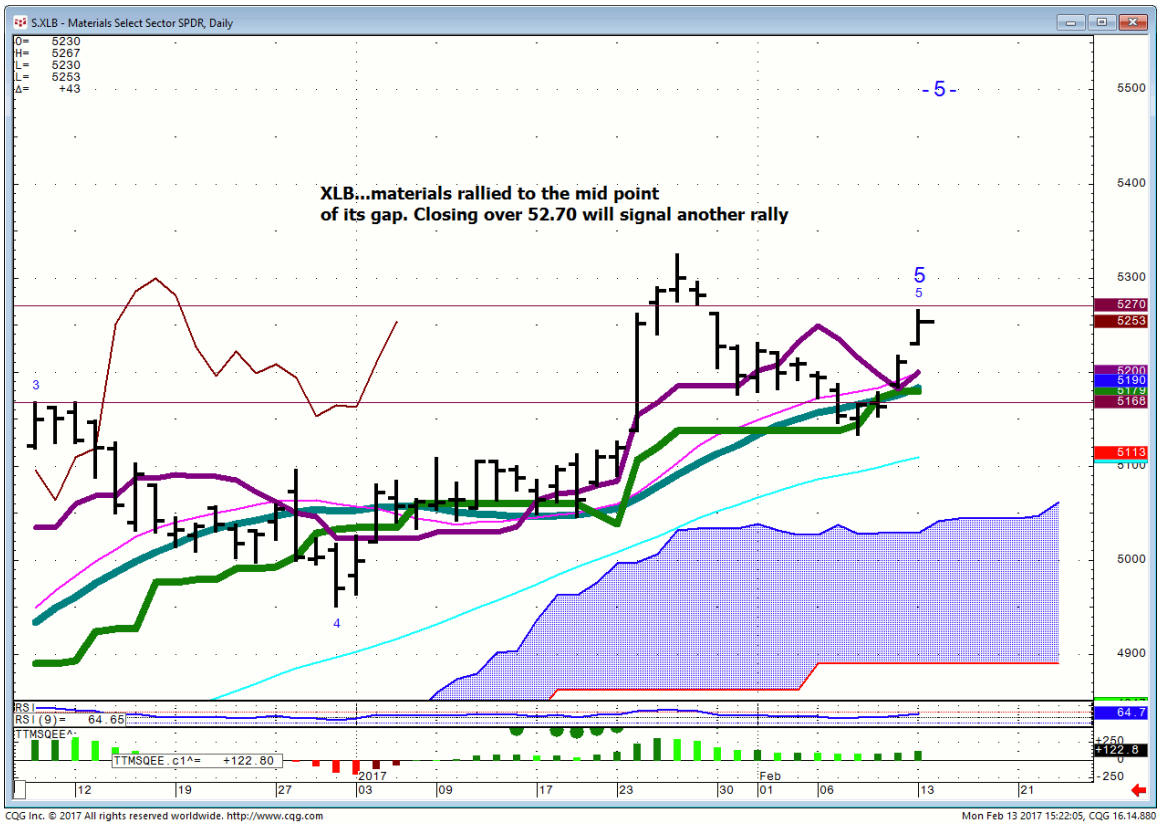
# IYT...



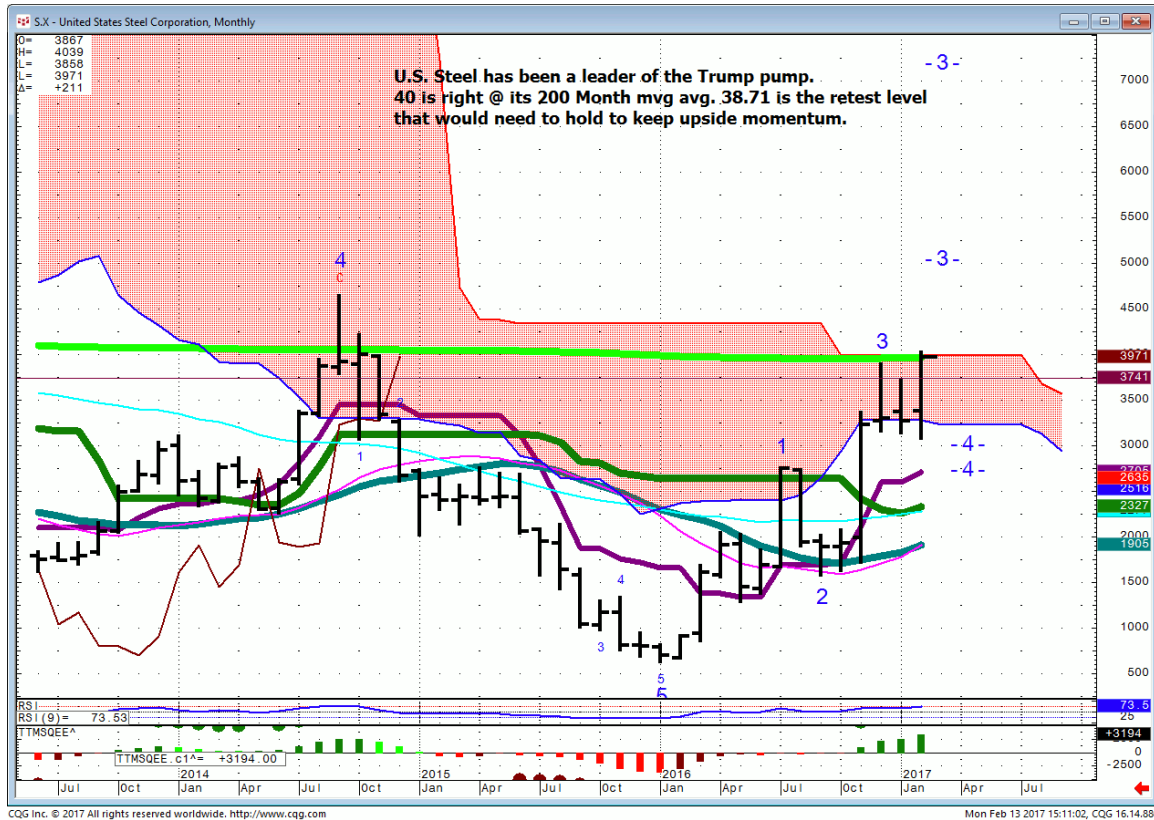
# RTM...weekly Spu Equal Weight Materials ETF



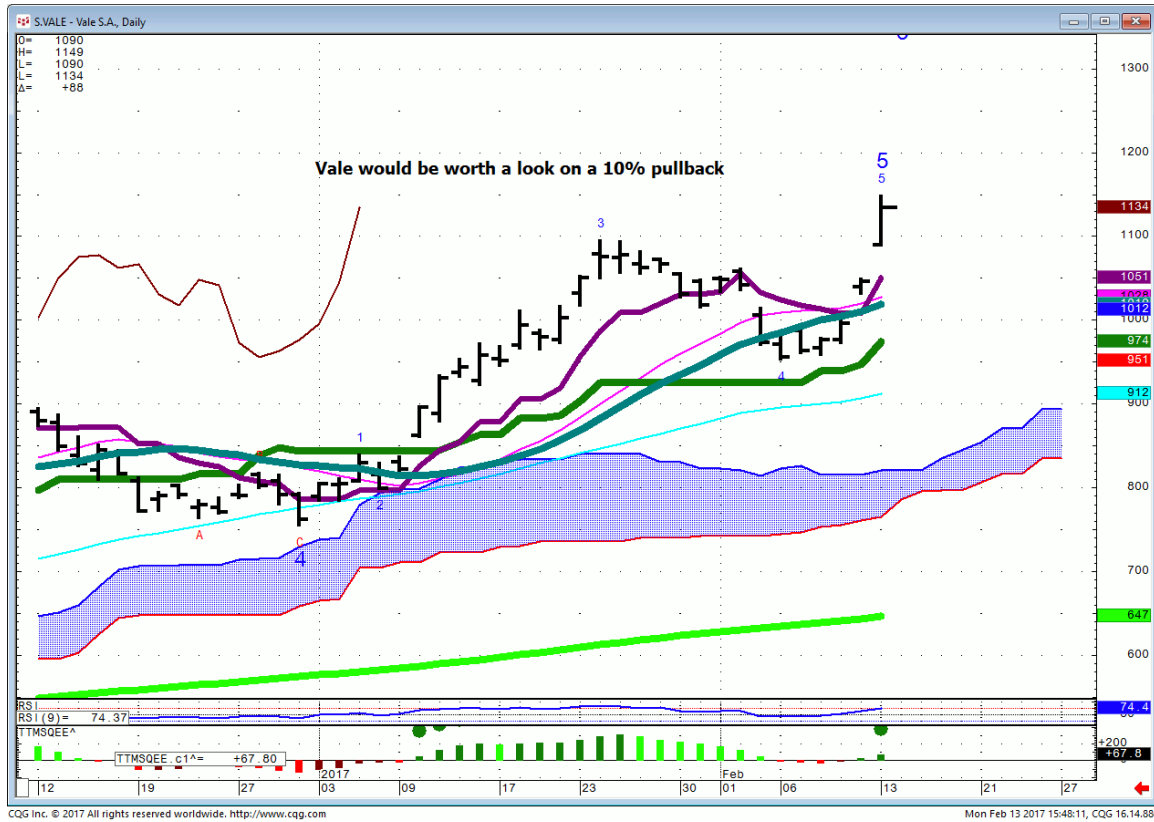
# XLB...daily



**X...Monthly...Closes over 40 will be bullish.**



# VALE...10.50 print fills the weekly gap



## ***Bonds***

***FX***

## ***Commodities***

**General Comments or Valuable Insight**

**All eyes will be on Yellen's testimony in the A.M.**

**Her prepared remarks have hit the tape before she's started speaking in the past, so be vigilant.**

**I have an eventual upside target in the Spu's @ 2440 that was generated last January. The target never goes away.**

**It our job to figure out the journey needed to achieve it. 2308 was the first short-term target.**

**I hesitate to put out intermediate levels because it would incite bad behavior with top picking.**

**Are we entitled to some back and fill after a 4-day 48 point Spu rally without so much as a 5 point pullback?**

**Sure, we could see some back and fill depending on Yellen's testimony or we could continue to rip.**

**Being flat is a position. Being short or top picking is suicidal until such time as a technical tradable top is in place.**

**306 Spu points in a straight line and counting. No sign yet.**

**The Bonds will be active depending on her language. The 30 yr. qtrly levels have not changed.**

**148.31 is the 200 month mvg average. Closing below would trigger an avalanche of selling.**

<http://www.whitewavetradingstrategies.com/glossary/>

**WhiteWave Trading Strategies**  
**Independent Research from the Pros Pro**

**We Trade to Make Money**

[www.whitewavetradingstrategies.com](http://www.whitewavetradingstrategies.com)

[info@whitewavetradingstrategies.com](mailto:info@whitewavetradingstrategies.com)