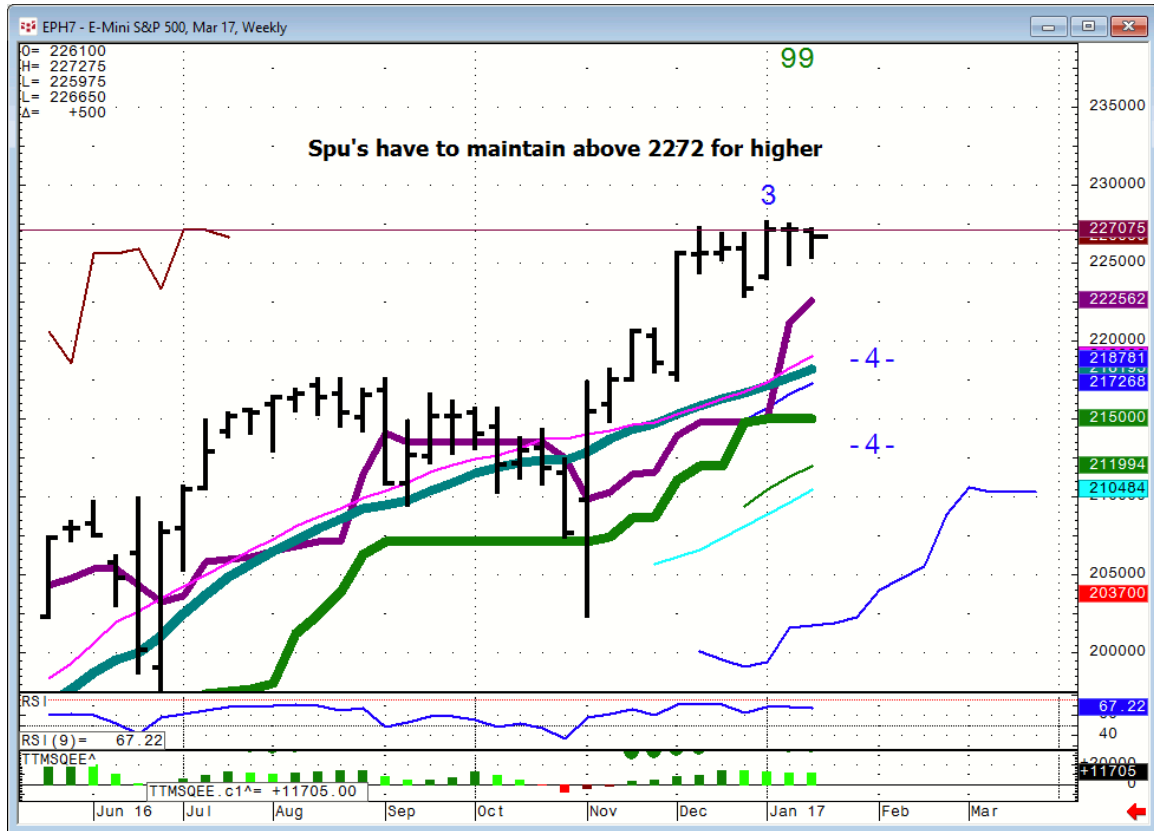




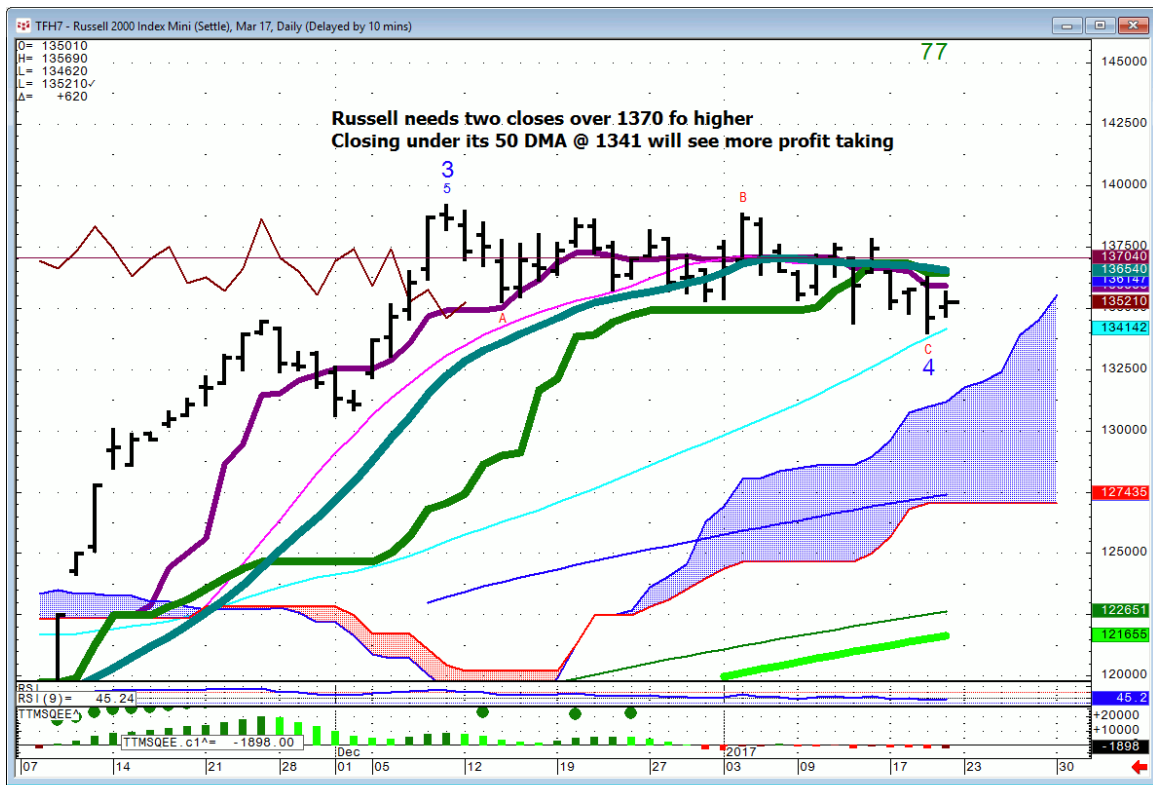
Daily Market Intelligence

Stocks

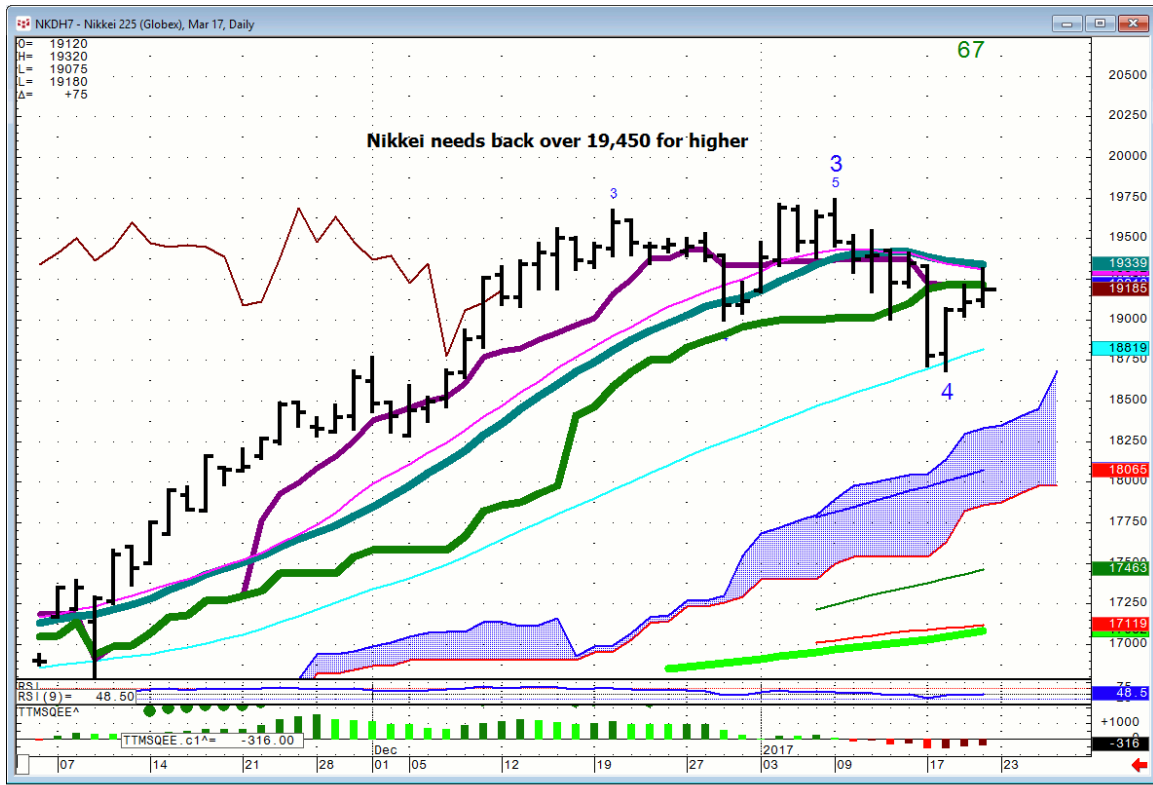
Spu...weekly



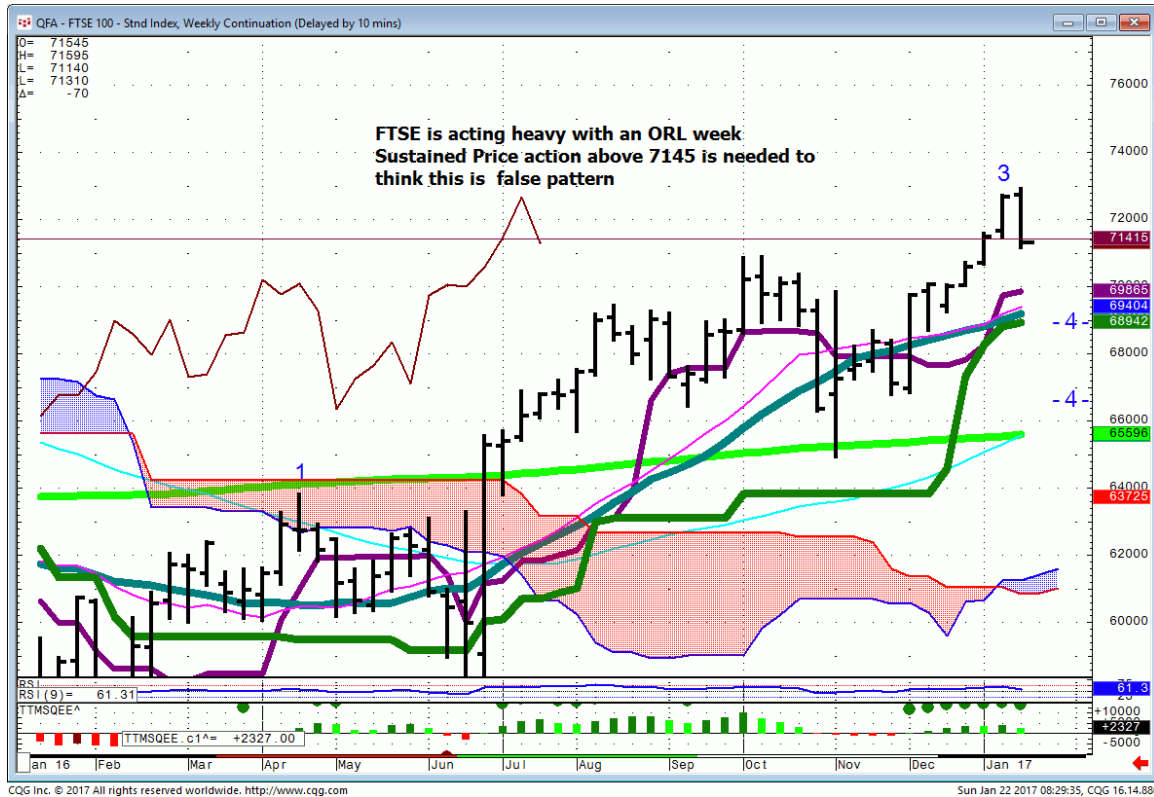
Russell 2000...daily



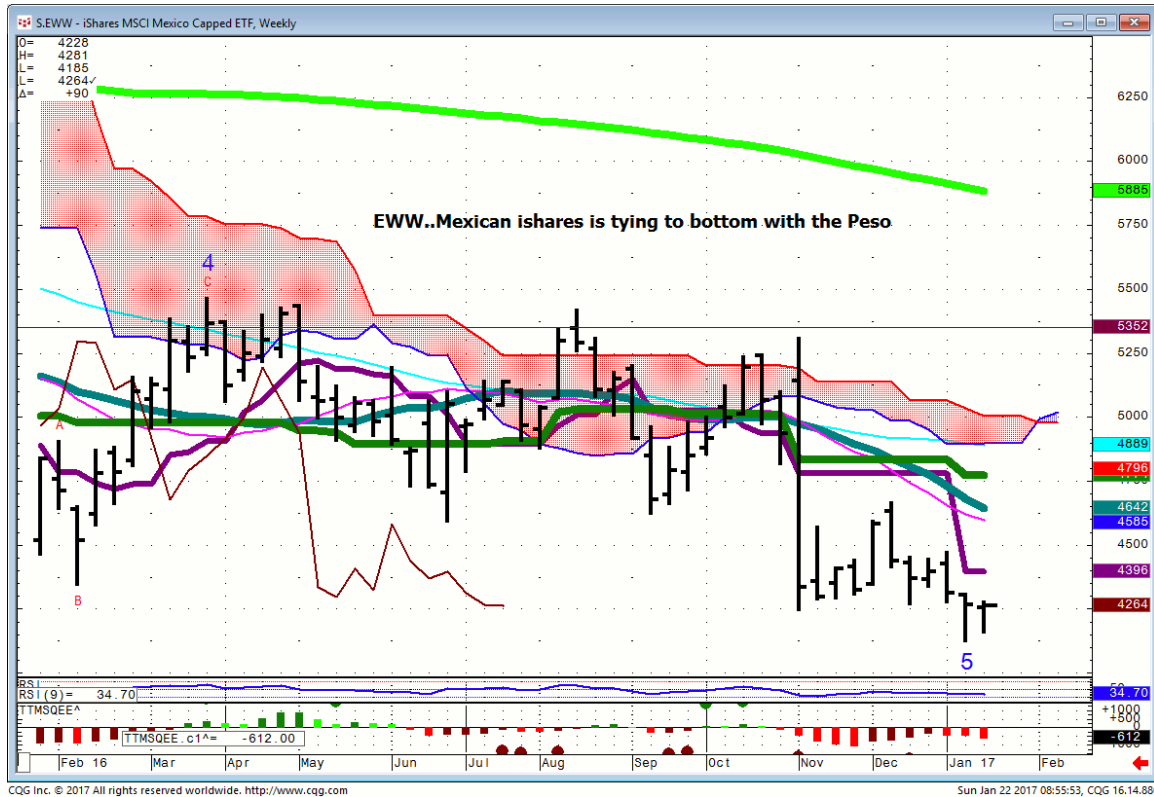
Nikkei...daily



FTSE...weekly



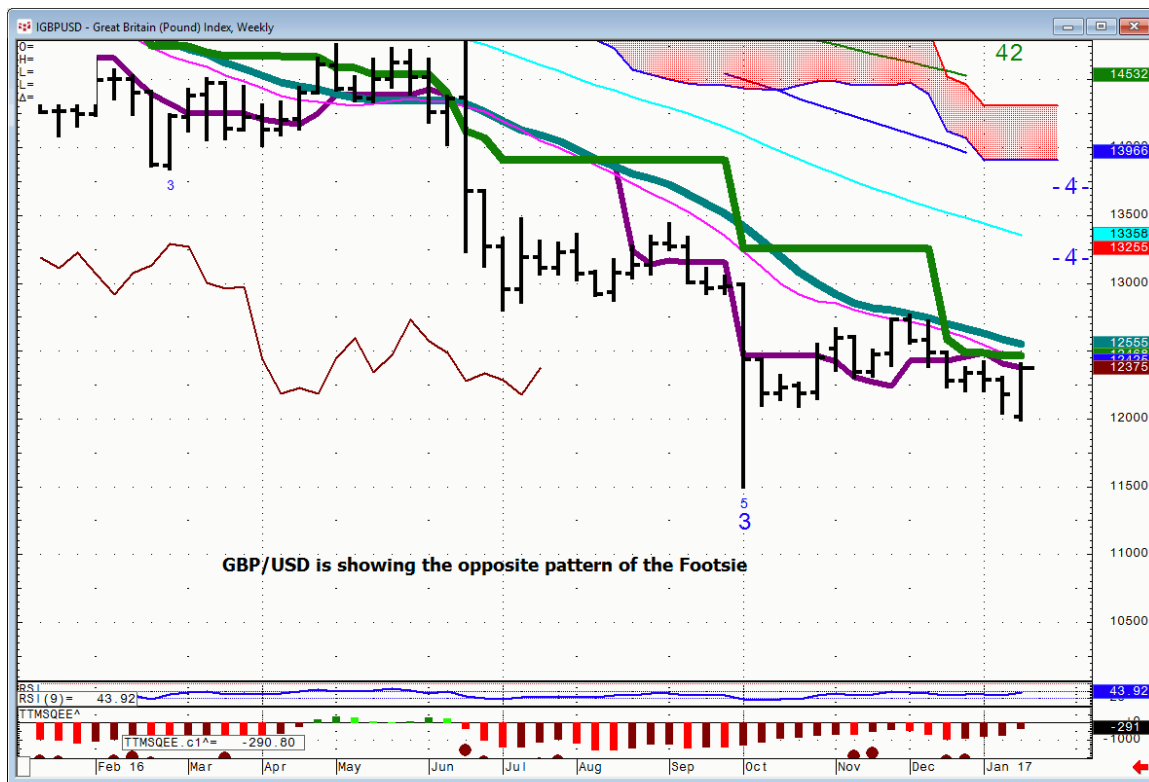
EWV...Mexican ishares weekly



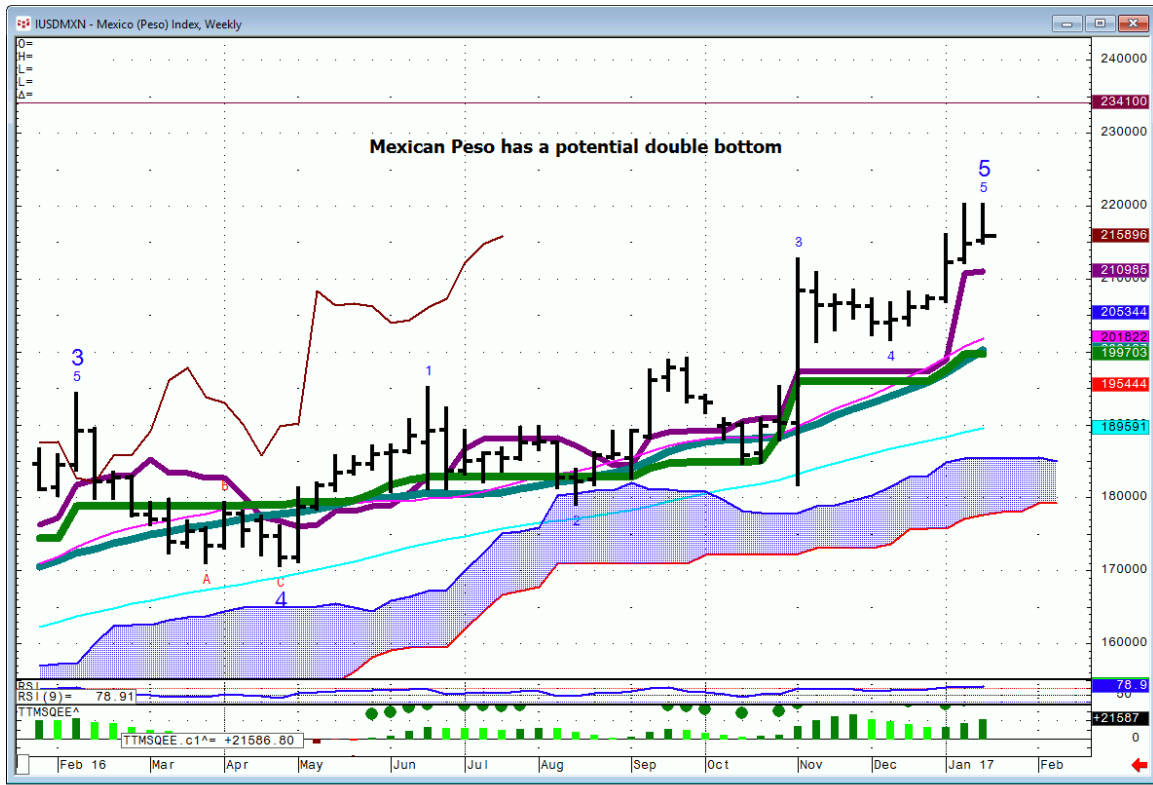
Bonds

FX

GBP/USD...weekly..



USD/MXN...Mexican Peso



Commodities

General Comments or Valuable Insight

Just an empirical note; when the Dollar sells off the Metals and Grains have been catching a nice bid.

The currency correlations with their respective Equity Indices have also been tracking.

**Weak Peso=weak EWW
Weak Yen=strong Nikkei
Weak Pound=Strong FTSE**

This has been the game since the U.S. election. Some of these trends are taking a breather or trying to turn.

The Spu's have done absolutely nothing since the beginning of December.

Since then I've reiterated ad nauseam that the game was in the names not trading the Indices.

A main focus of this letter is to keep you looking in the right places for opportunity and away from sectors or instruments that are not presently in play.

This week pay attention to the early flows to see if the rest of the world wishes to slight Trump by pulling U.S. assets and further weakening the dollar.

<http://www.whitewavetradingstrategies.com/glossary/>

**WhiteWave Trading Strategies
Independent Research from the Pros Pro**

**We Trade to Make Money
www.whitewavetradingstrategies.com
info@whitewavetradingstrategies.com**