



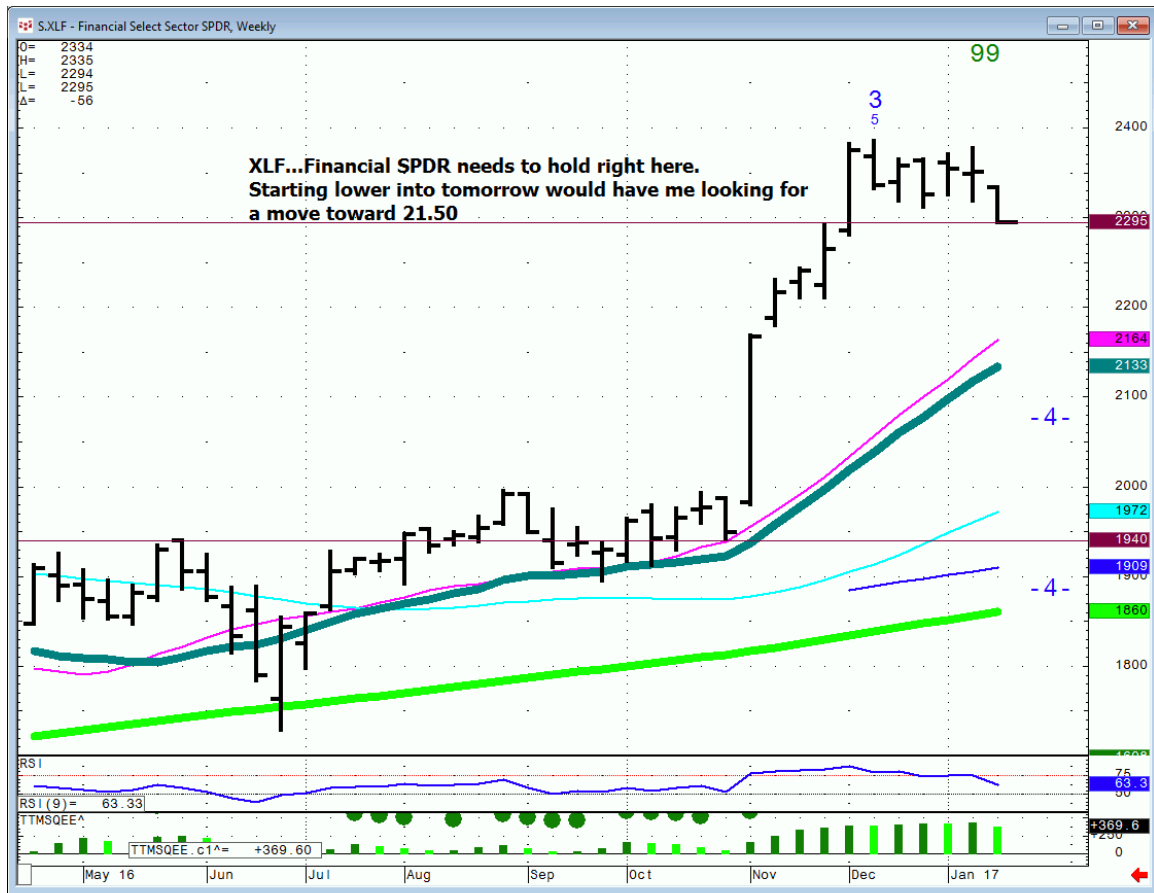
## Daily Market Intelligence



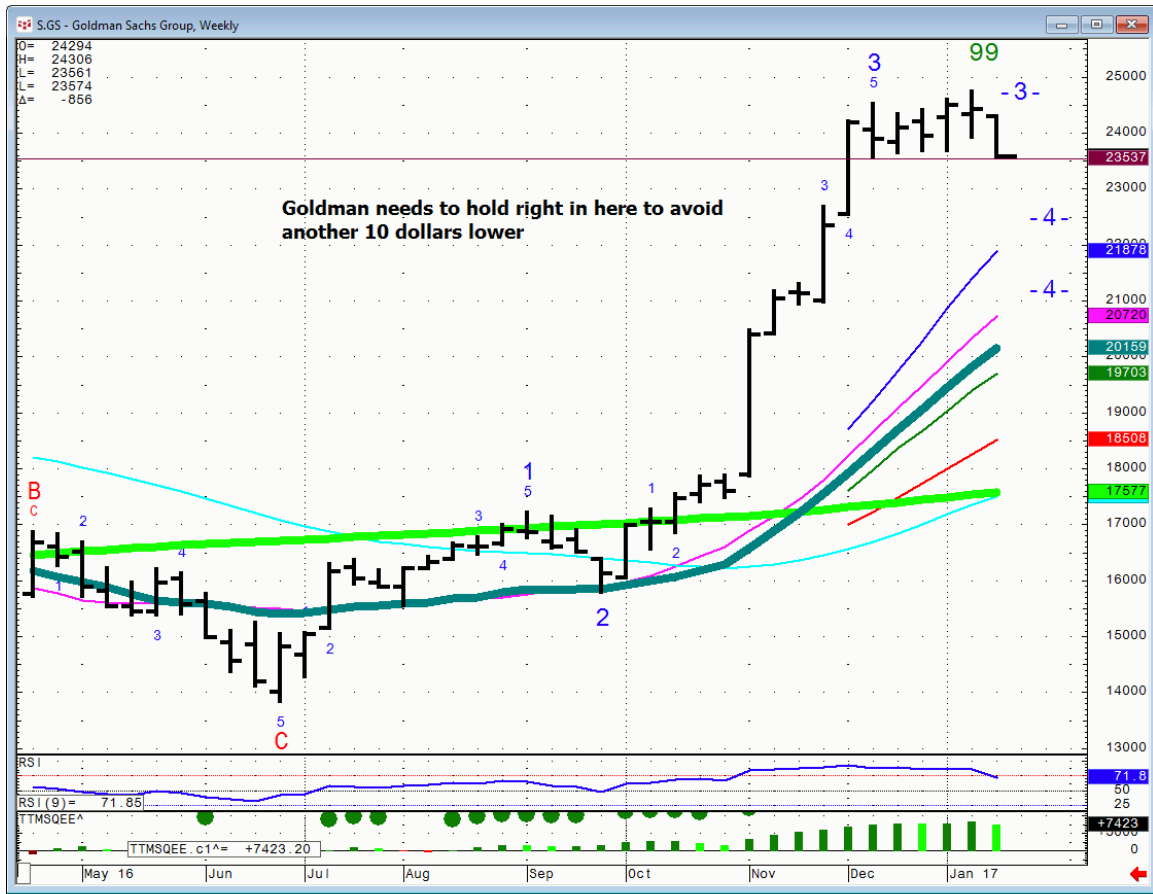
# XLU...daily



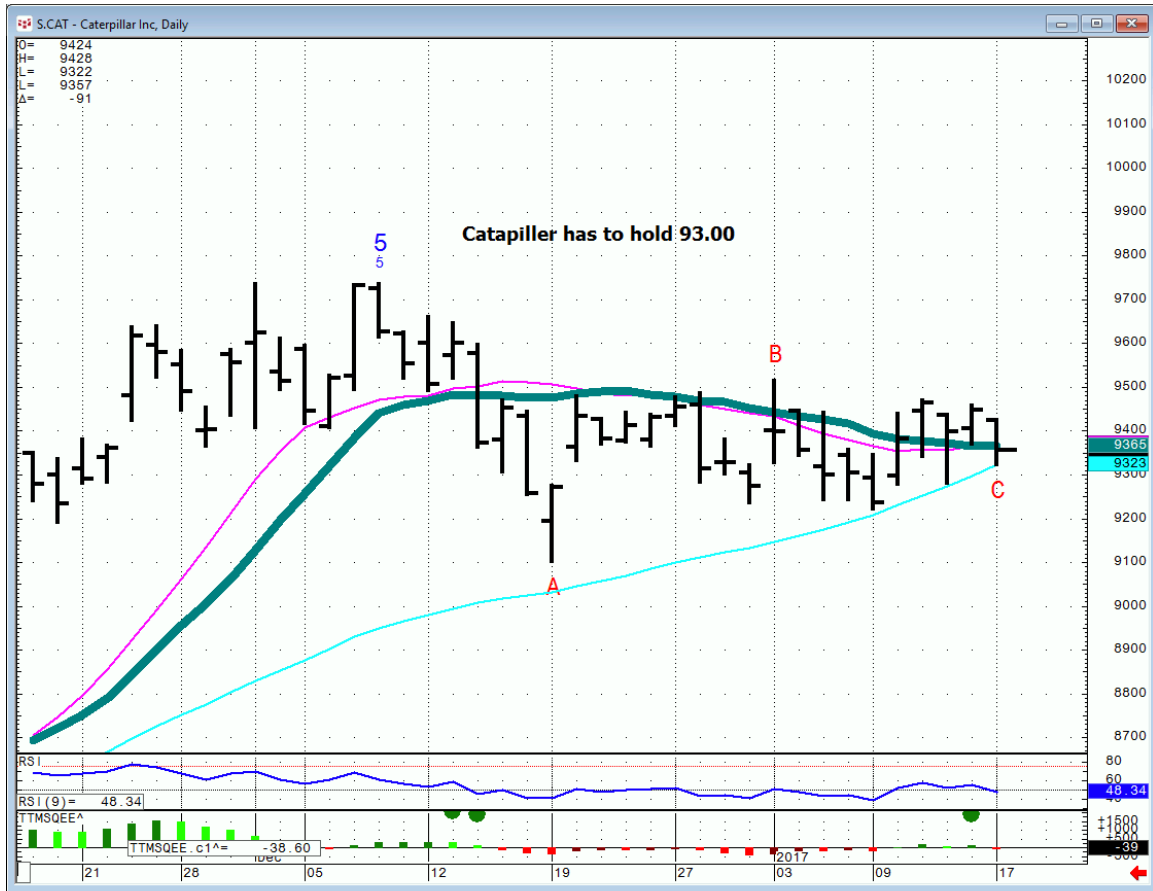
# XLF...



# GS...weekly..Goldman weakens below 235.30



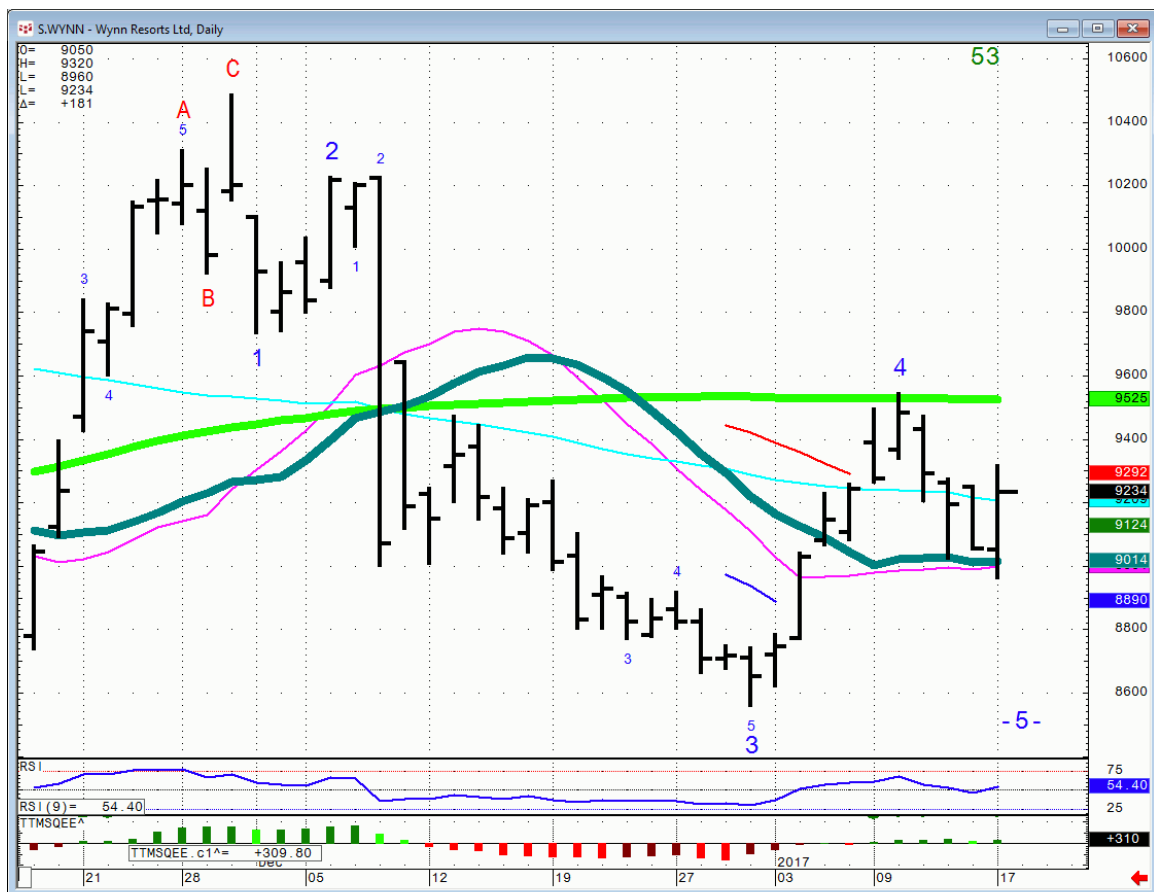
CAT...



# CSX...



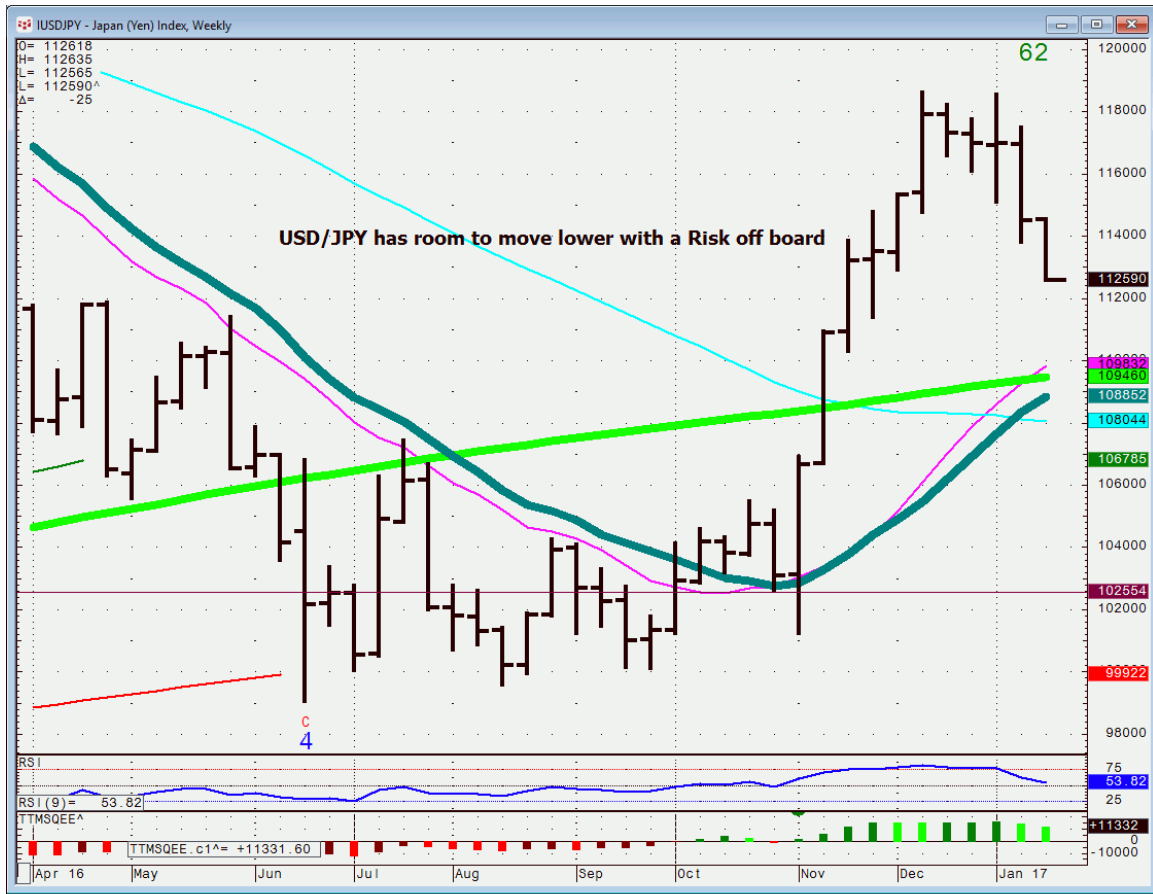
**WYNN...daily.** Both Wynn and LVS attracted buying today which also saw some spillover effect in MGM.



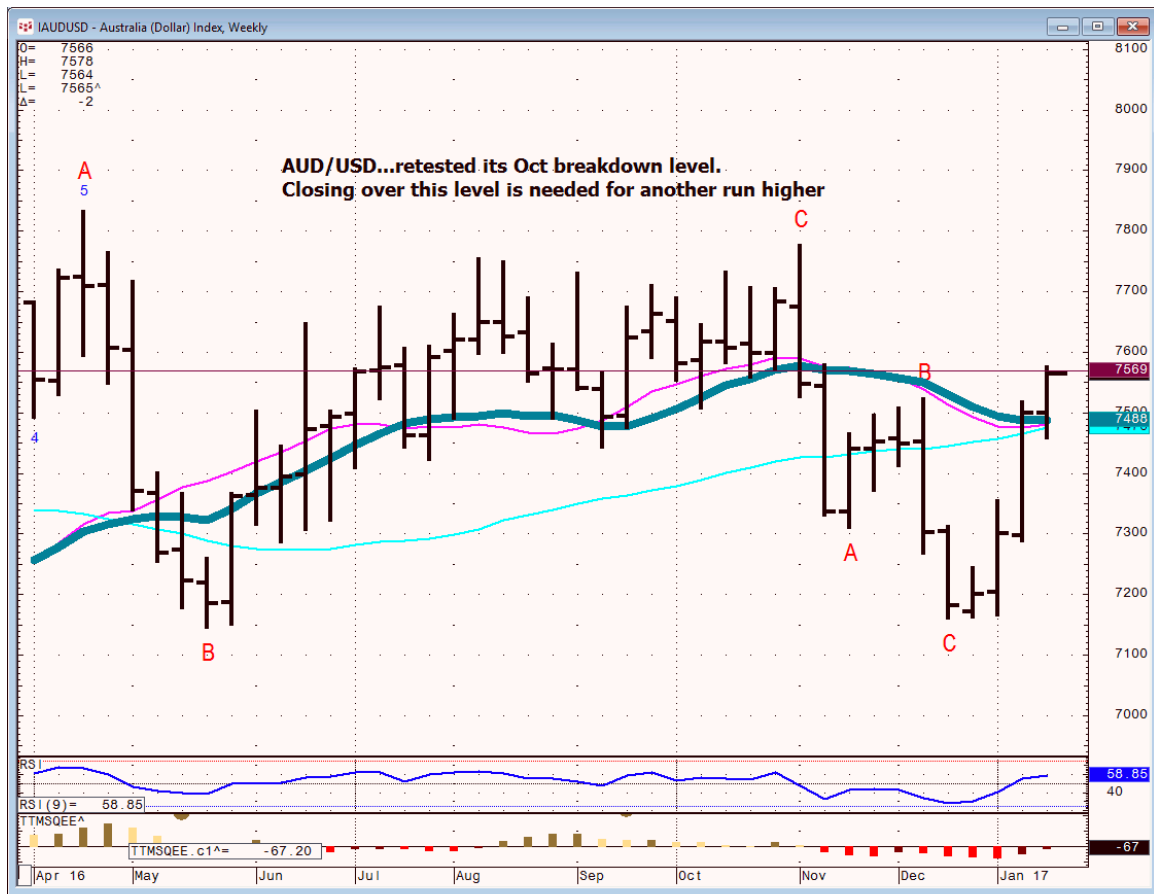
## ***Bonds***

FX

## USD/JPY...weekly



# AUD/USD....weekly



## ***Commodities***

**General Comments or Valuable Insight**

**The week is shaping up as a big scalping affair for shorter Time Frame traders in specific names.**

**IBB needs to hold above 273 to keep Nasd 100 from a bigger correction.**

**The board is trading the name du' Jour.**

**The Dollar Index is into a major level. We're going into Wednesday for the mid-week shuffle.**

**Let it play out!**

**I played Humana a little too tight with an intra-day stop. You have a 50-50 chance on a stop like that.**

**I chose poorly this time.**

**<http://www.whitewavetradingstrategies.com/glossary/>**

**WhiteWave Trading Strategies**  
**Independent Research from the Pros Pro**

**We Trade to Make Money**  
www.whitewavetradingstrategies.com  
info@whitewavetradingstrategies.com