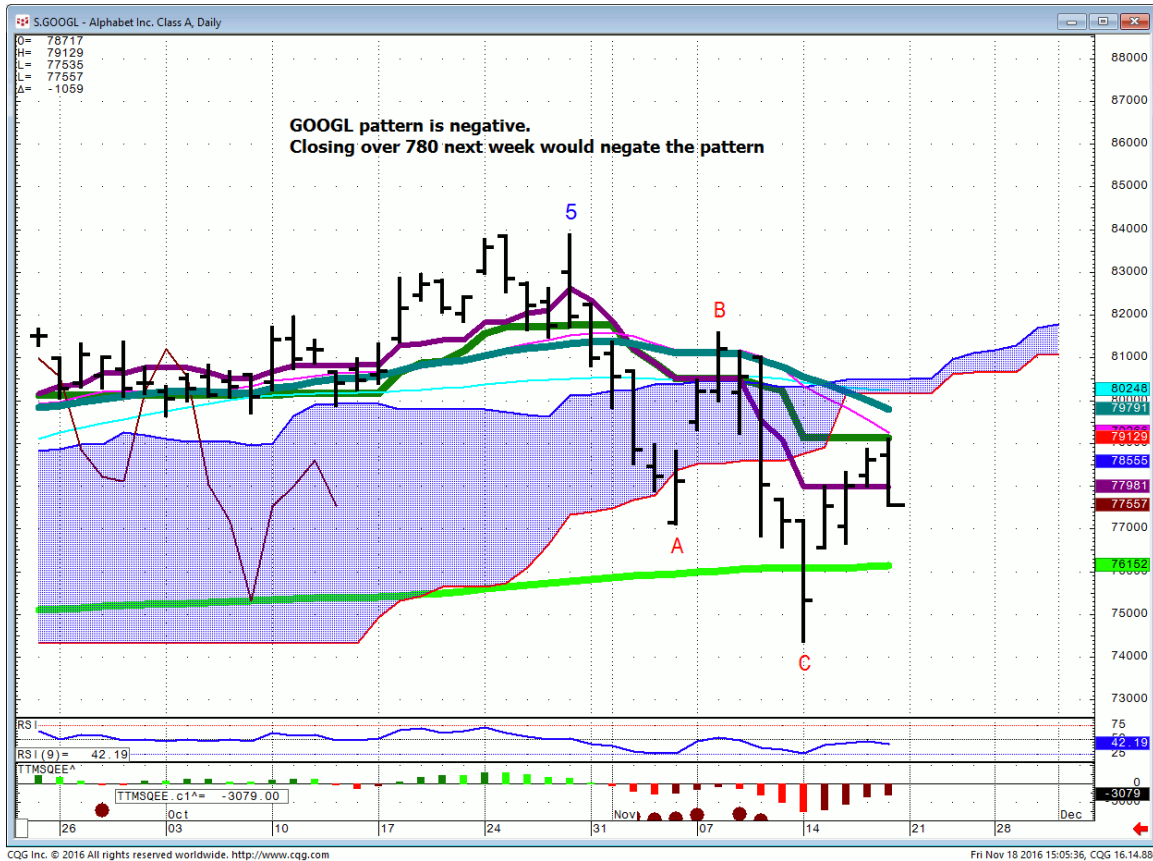




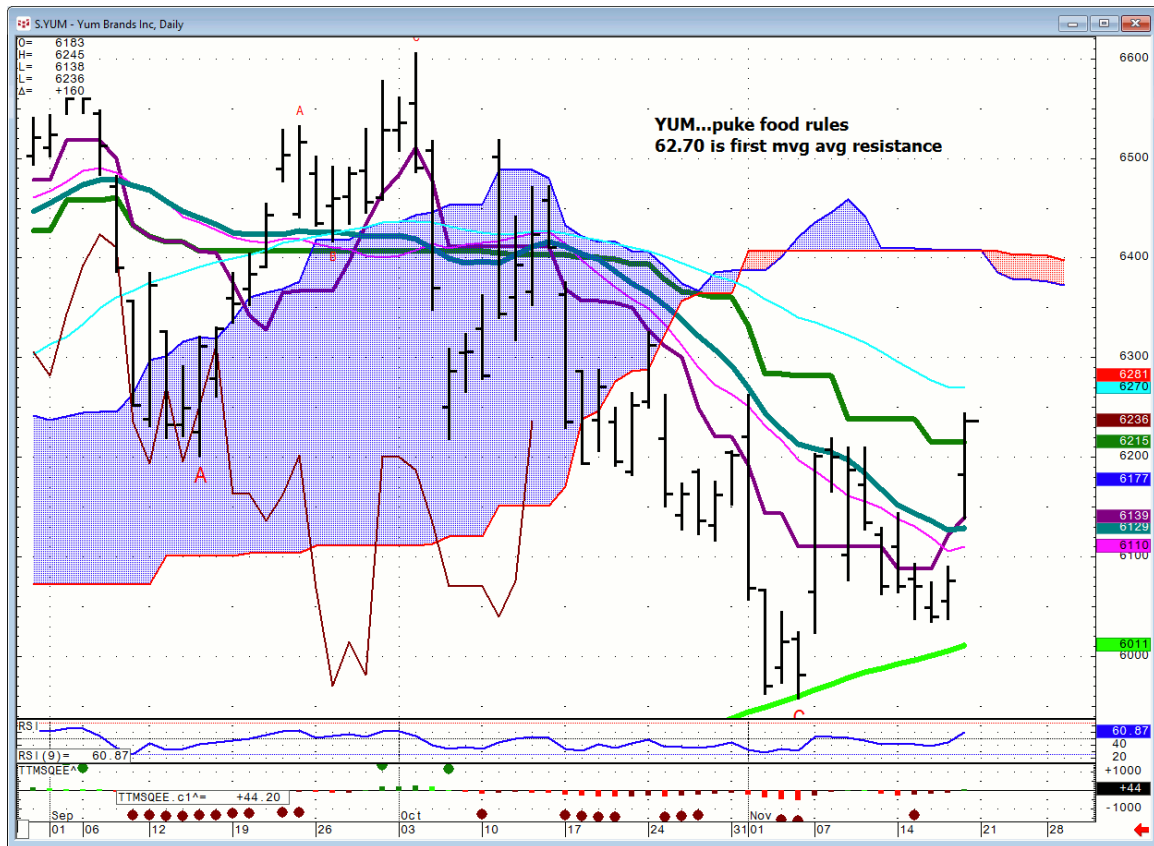
## Daily Market Intelligence



# GOOGL...is weighing on Nasdaq



**YUM...Yum Brands.** a world leader in indigestible food and high returns.



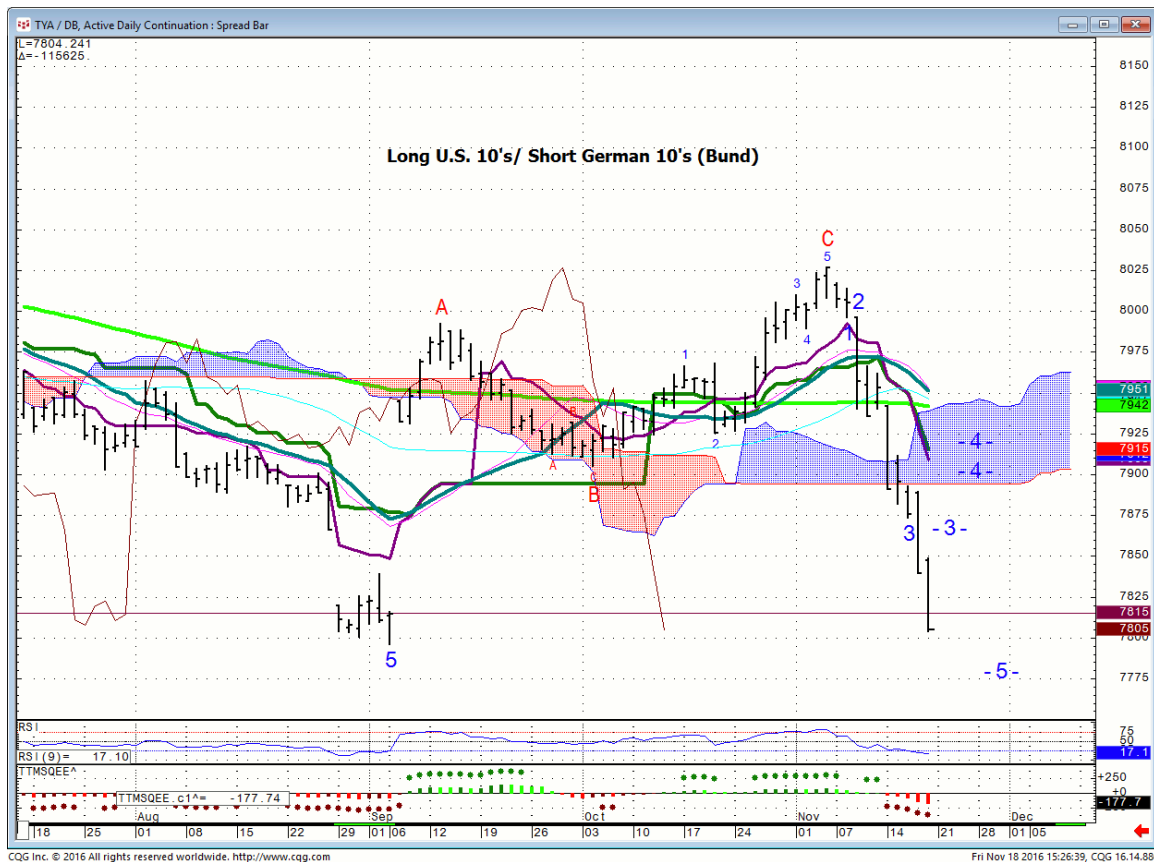
# Bonds

## Bund...



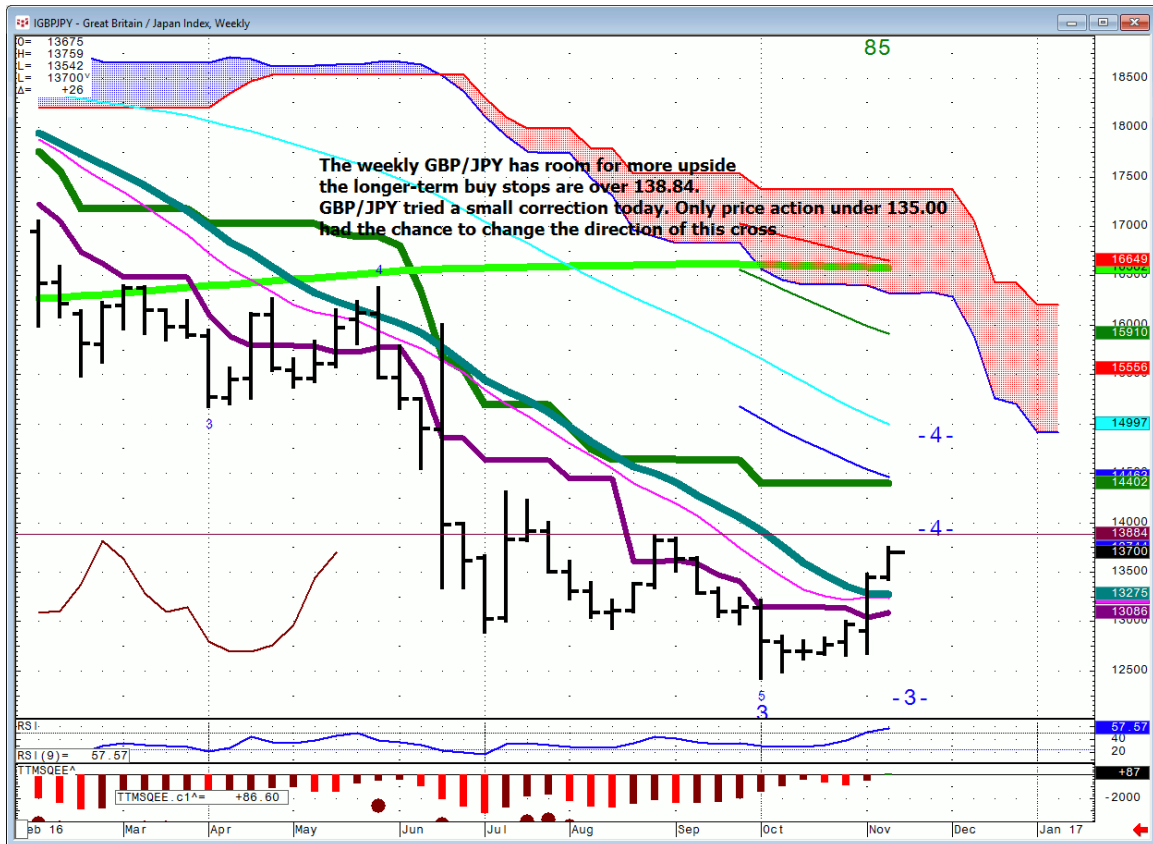
**TY/DB...Long U.S. 10's/Short German 10's(BUND)** This spread came back to fill its gap from Sept. The monthly pattern shows the possibility of more downside, however the prudent bear should respect the weekly price action.

Daily RSI's in the teens should be respected and watched for a possible reversal.



FX

# GBP/JPY...



## ***Commodities***

### **General Comments or Valuable Insight**

**There was a lot of money bet on a strengthening dollar election eve.**

**Those bets are getting long in the tooth on a short-term basis.**

**I thought the NASD would pick up against the other Indices and I'm currently incorrect!**

**Trade what you see Sunday into Monday.**

**Next week I'll be focusing on the retailers that benefit from holiday shopping.**

**<http://www.whitewavetradingstrategies.com/glossary/>**

**WhiteWave Trading Strategies**  
**Independent Research from the Pros Pro**

**We Trade to Make Money**

[www.whitewavetradingstrategies.com](http://www.whitewavetradingstrategies.com)

[info@whitewavetradingstrategies.com](mailto:info@whitewavetradingstrategies.com)