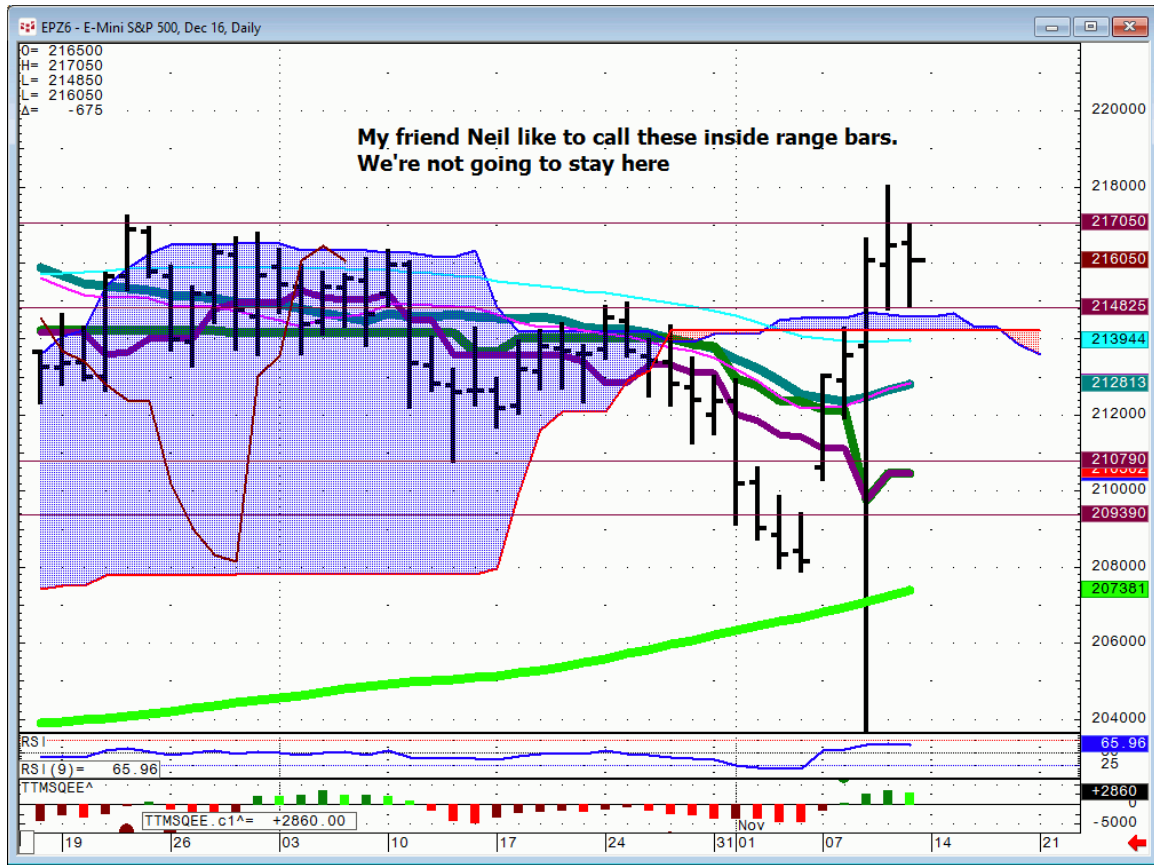




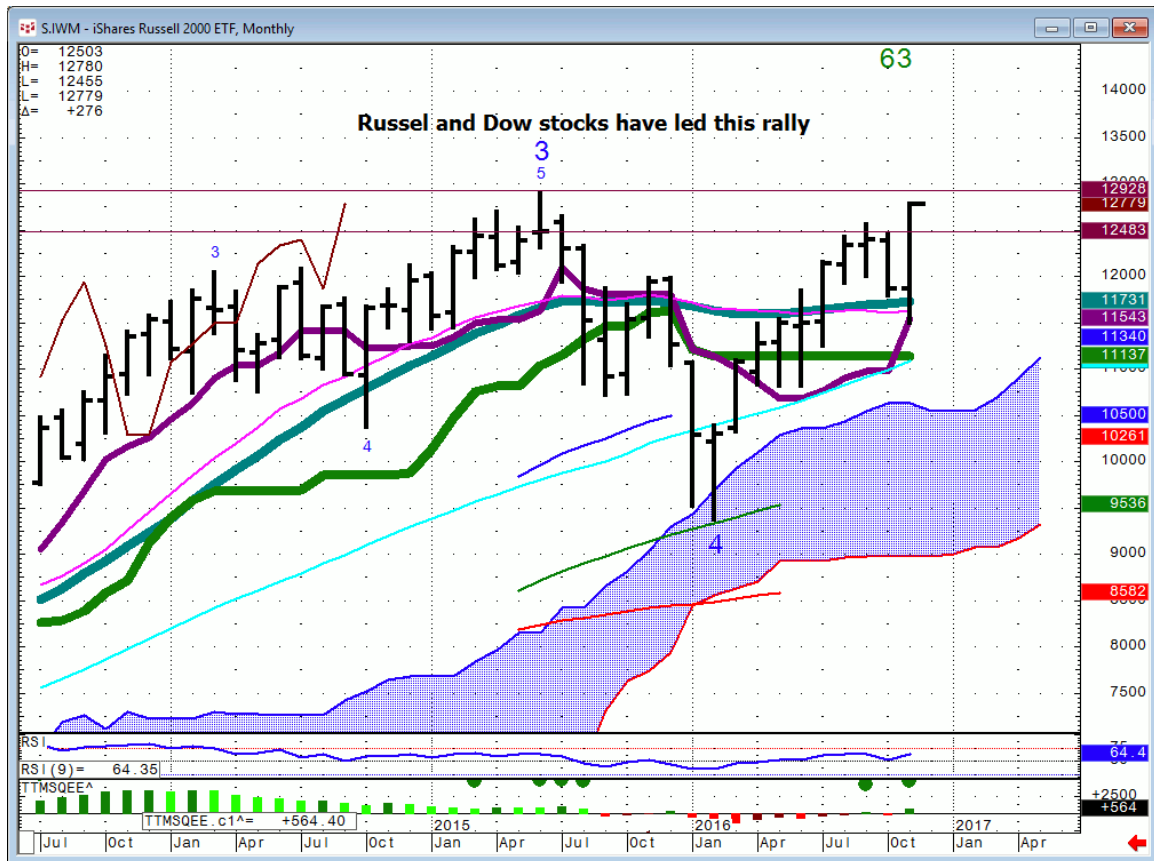
Daily Market Intelligence

Stocks

Spu's... This is a TLP & Neil Special setup.



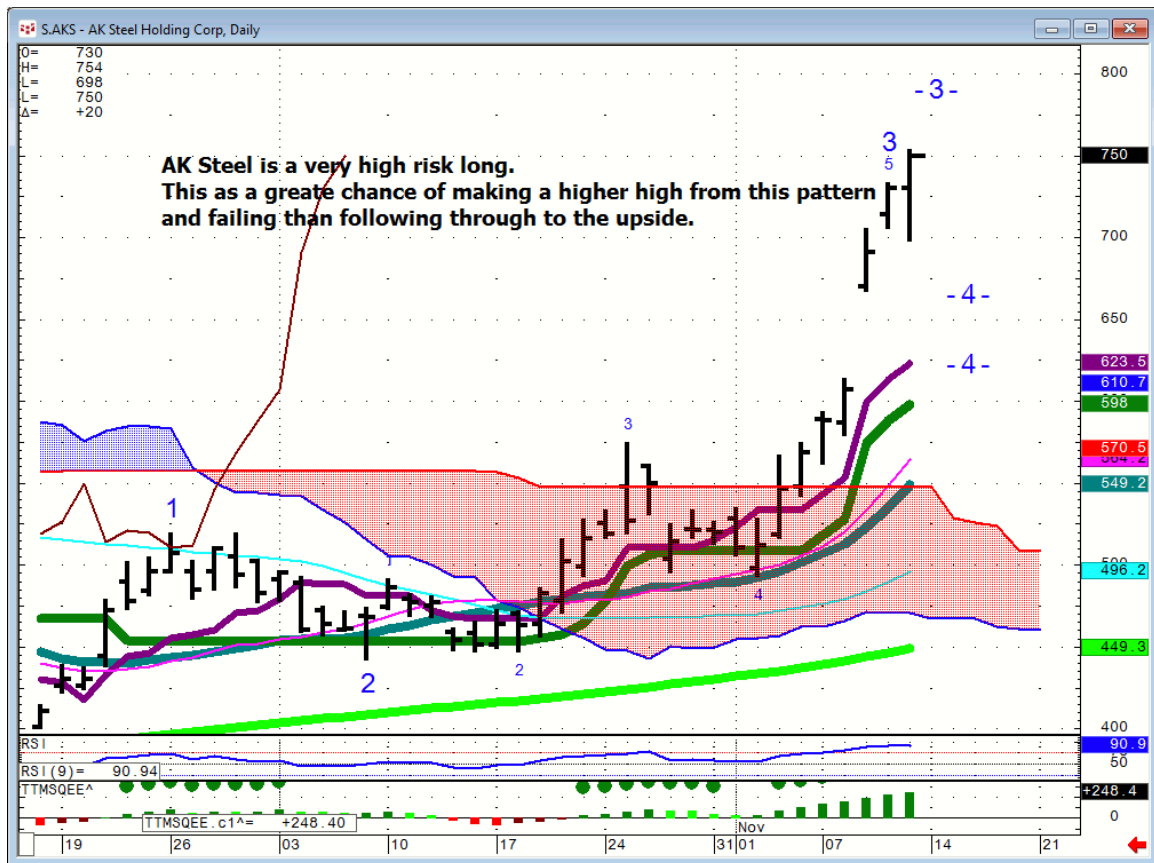
IWM...



XLU...Utilities

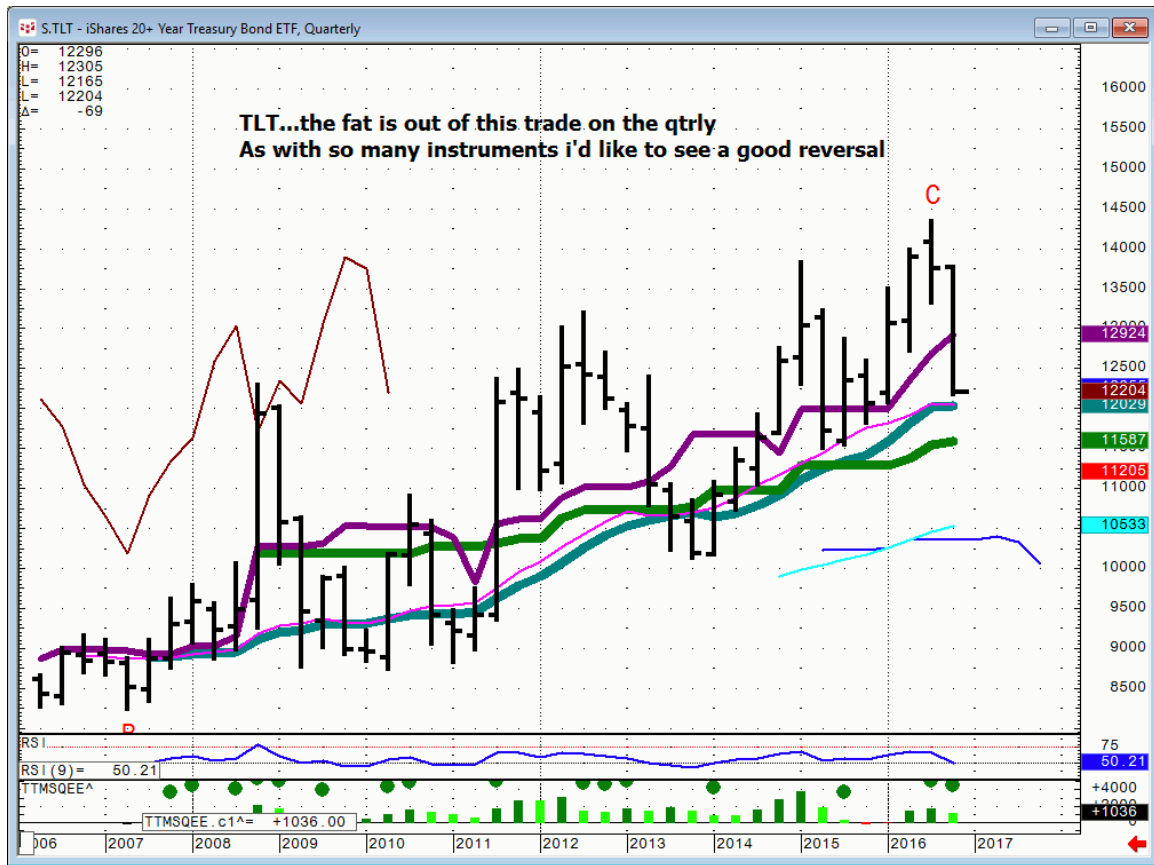


AK Steel... patterns like this have to be played with a tight leash, as they can be Bull Traps.



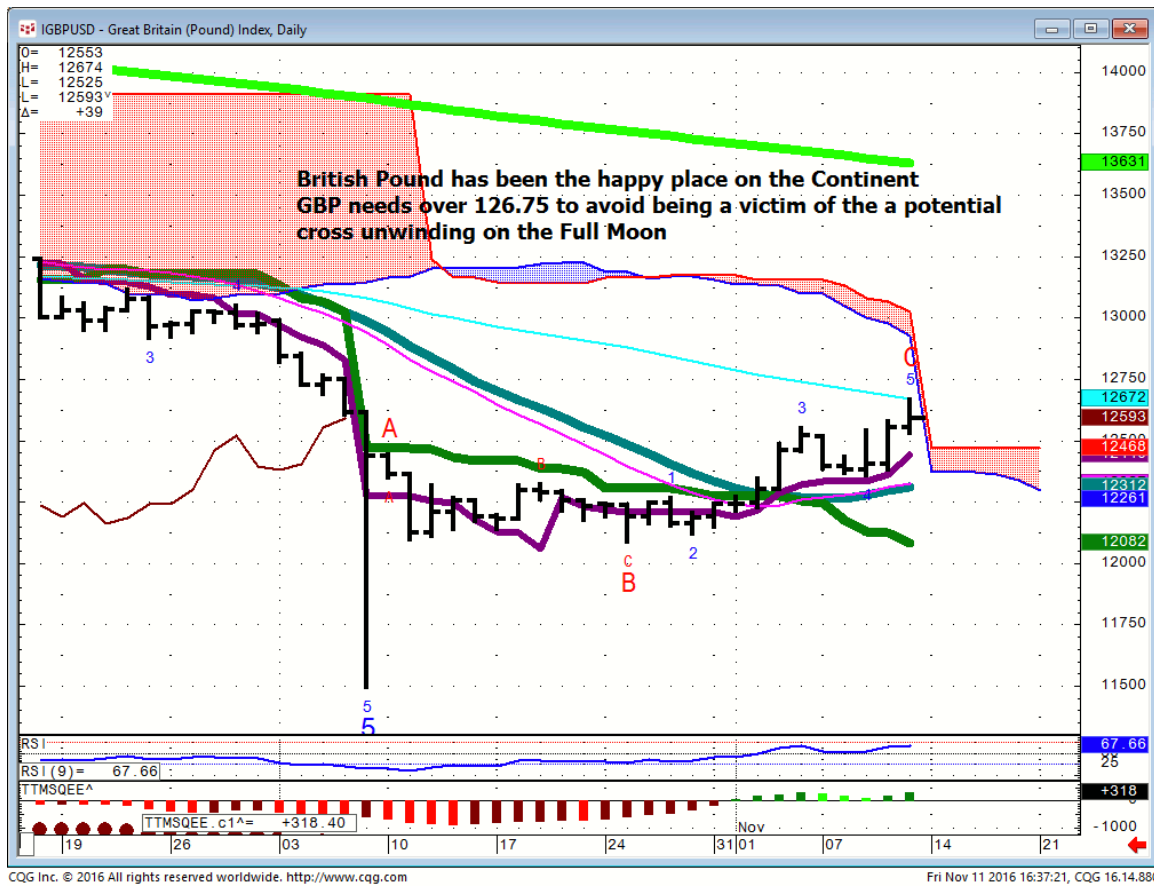
Bonds

TLT...



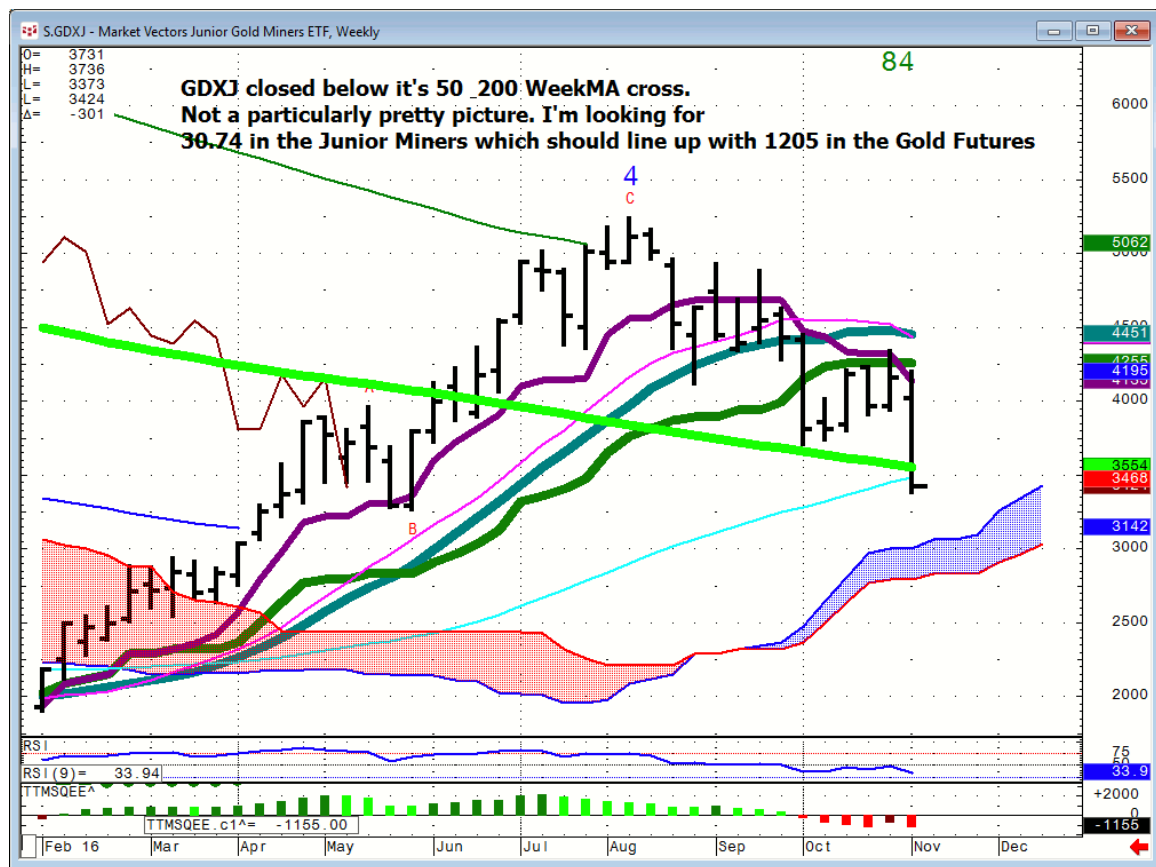
FX

GBP/USD..it's Friday and I'm burnt, so I'm not correcting the grammar in the chart text.

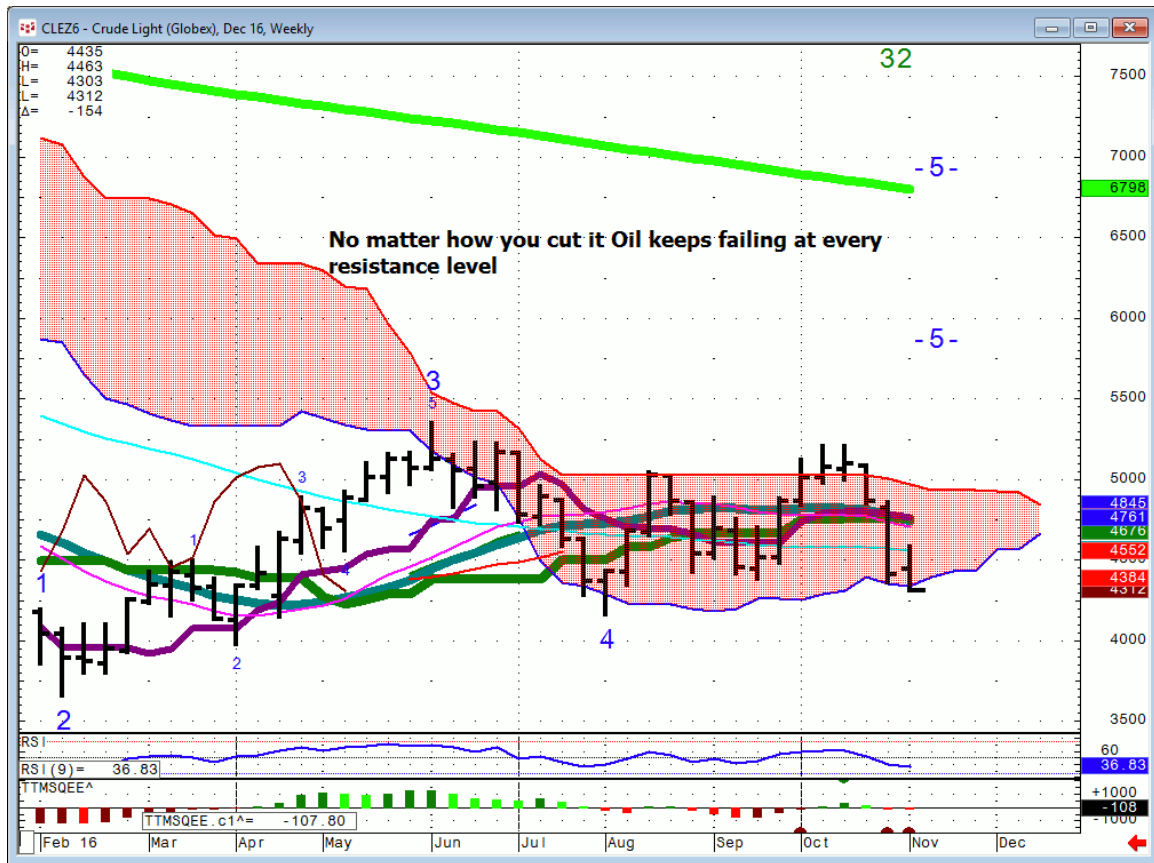


Commodities

GDXJ...1205 is the matching 50% fib retrace for the year. This is where I put out a buy recommendation for the October payrolls #. This level should provide a bounce.



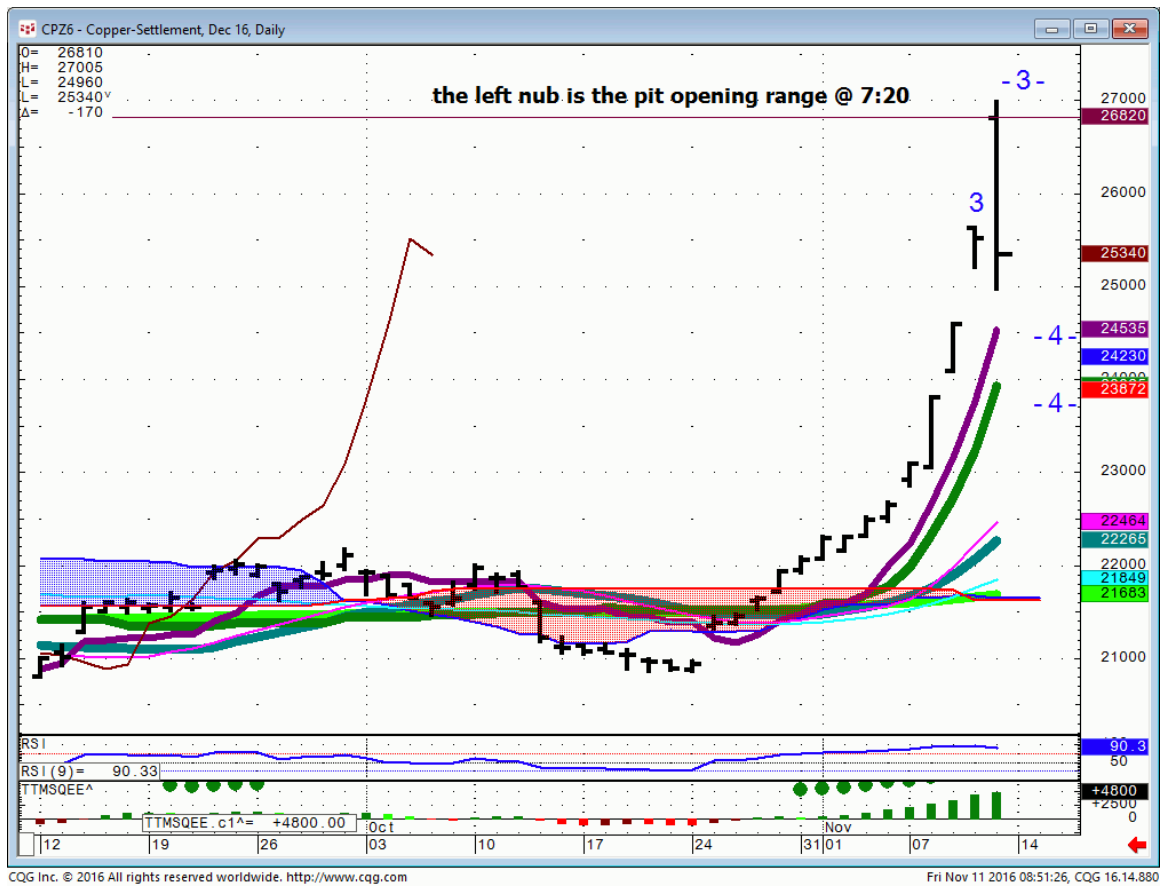
OIL..



OIL...Monthly



Copper...just missed my target and corrected.



General Comments or Valuable Insight

Full Moon Trading next week.

I'll let the week set up.

A rally into Wednesday will be circumspect given the current RSI's in the market leaders.

Tom Demark is forecasting an 11% break starting next week.

<http://www.marketwatch.com/story/in-wake-of-trump-rally-tom-demark-calls-for-11-stock-market-decline-2016-11-11>

Given the current market conditions I'm with him on looking for some relief although I'm not looking for more than 65 points of downside in the S&P's.

Gundlach is looking for an oversold bounce in the treasuries.

<http://www.marketwatch.com/story/bond-king-gundlach-sees-relief-for-treasurys-after-trump-inspired-tantrum-2016-11-11>

These are similar views articulated via different instruments.

November Soybeans expire Monday.

"One day at a time/one trade at a time" TLP

<http://www.whitewavetradingstrategies.com/glossary/>

WhiteWave Trading Strategies
Independent Research from the Pros Pro

We Trade to Make Money

www.whitewavetradingstrategies.com

info@whitewavetradingstrategies.com