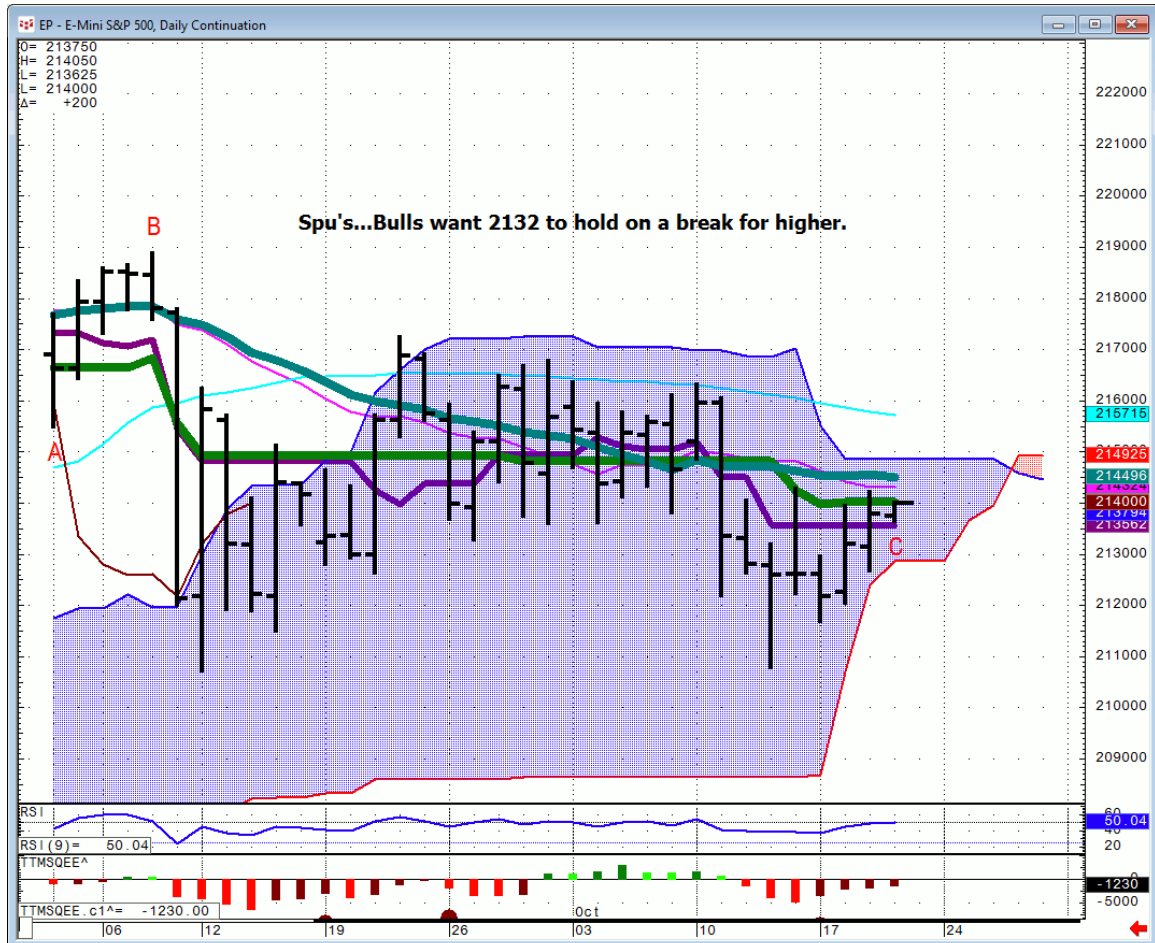




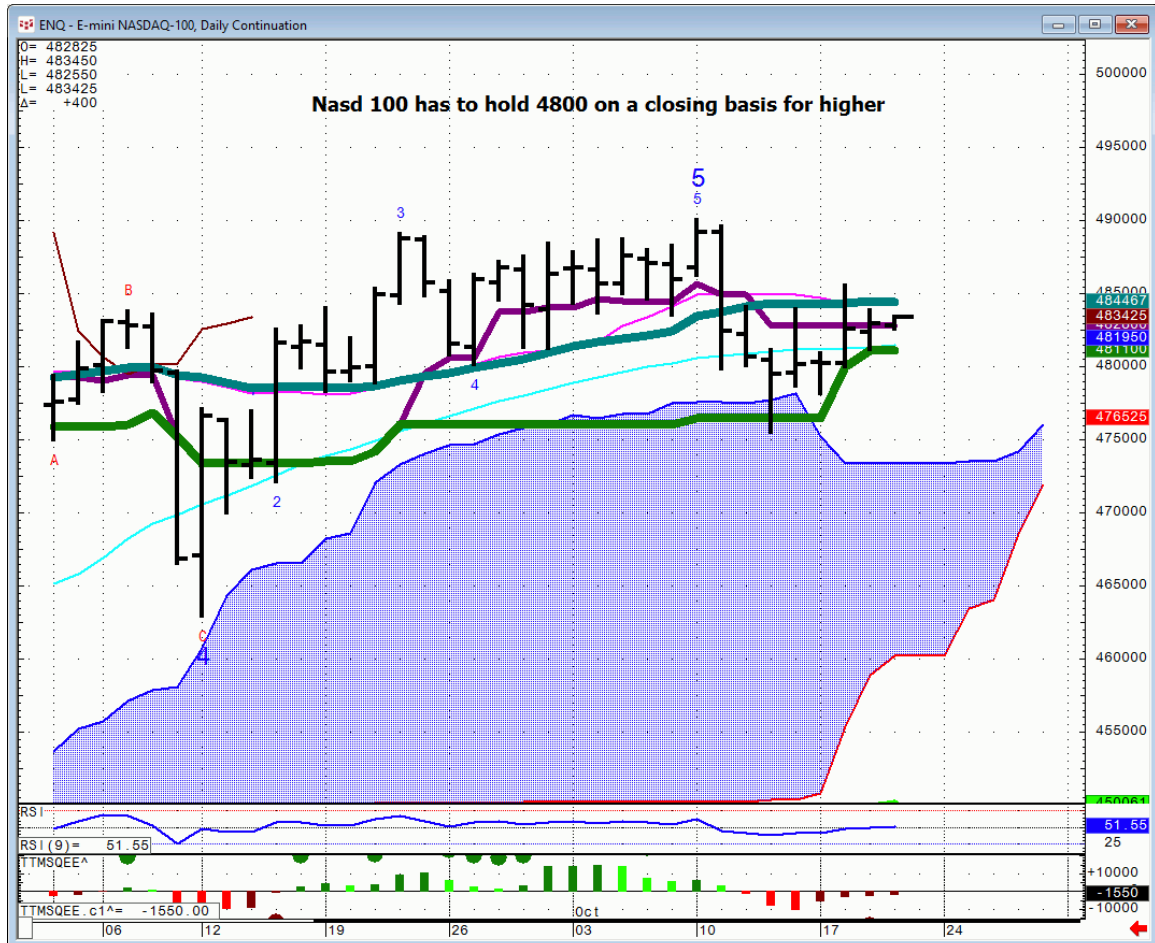
## Daily Market Intelligence

# Stocks

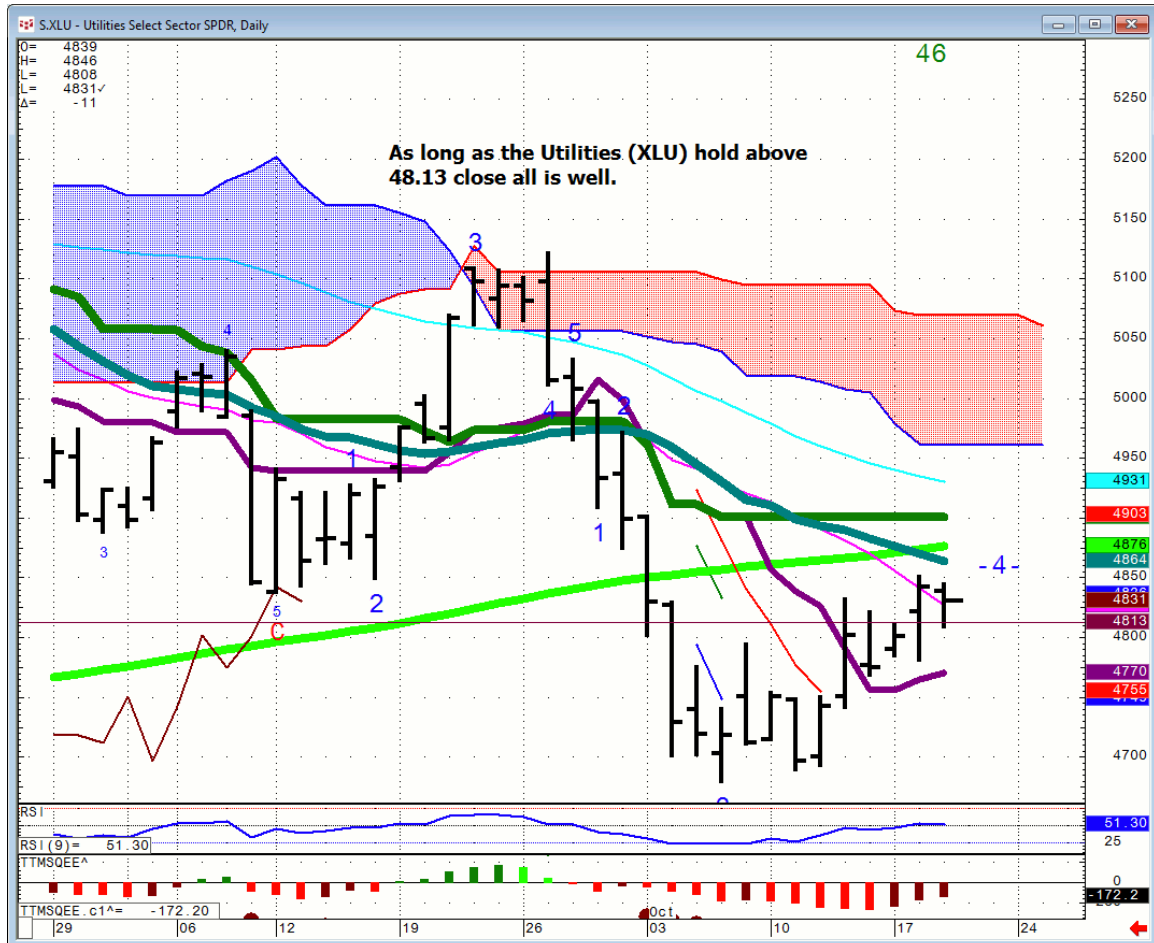
## Spu's...



# Nasd 100...

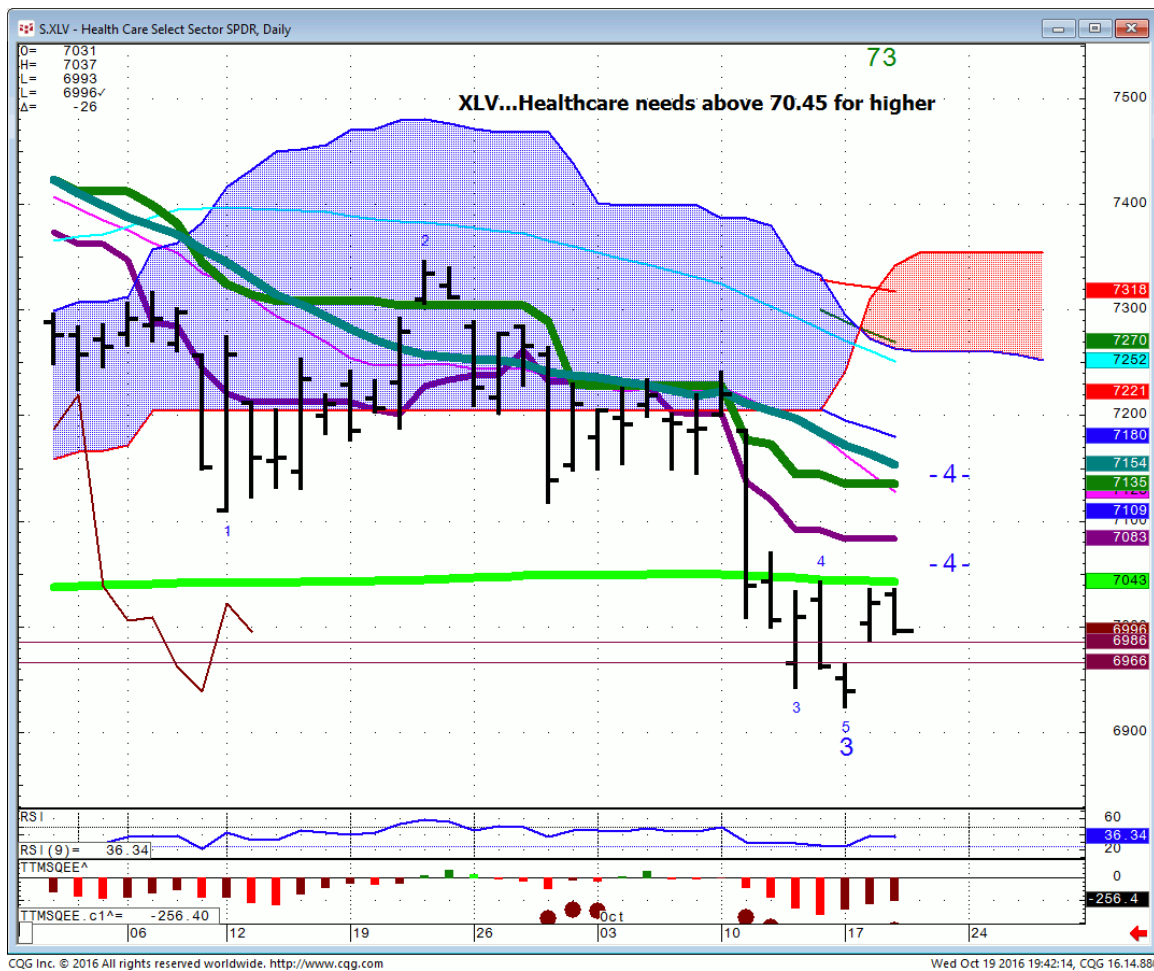


# XLU...Utilities

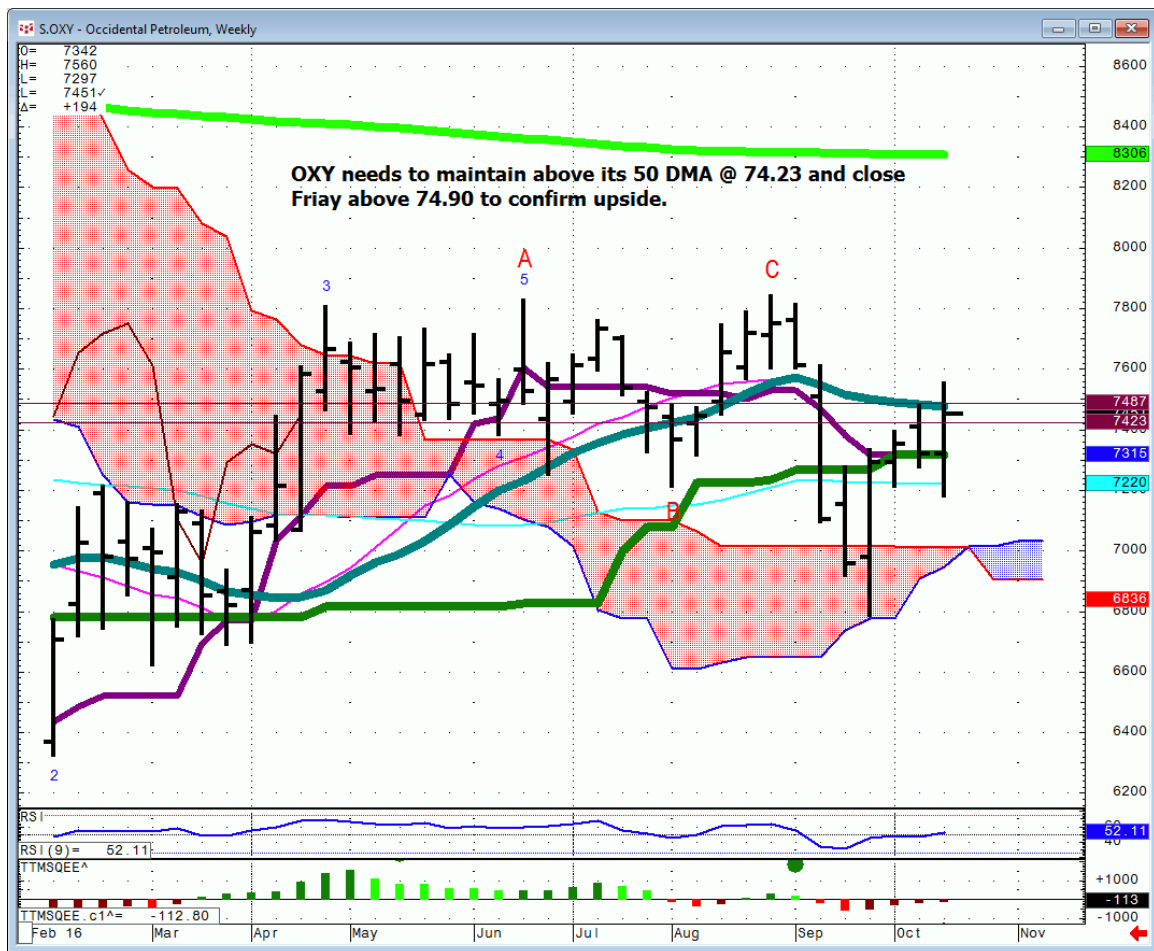


**XLV...**Healthcare has been a laggard with the exception of **UNH**. My friends Neil & Tony are fans of following these inside range bars for breakouts.

I haven't followed the boys closely enough to know their expected direction off a one of these patterns, although I'm sure it's not going to stay here.

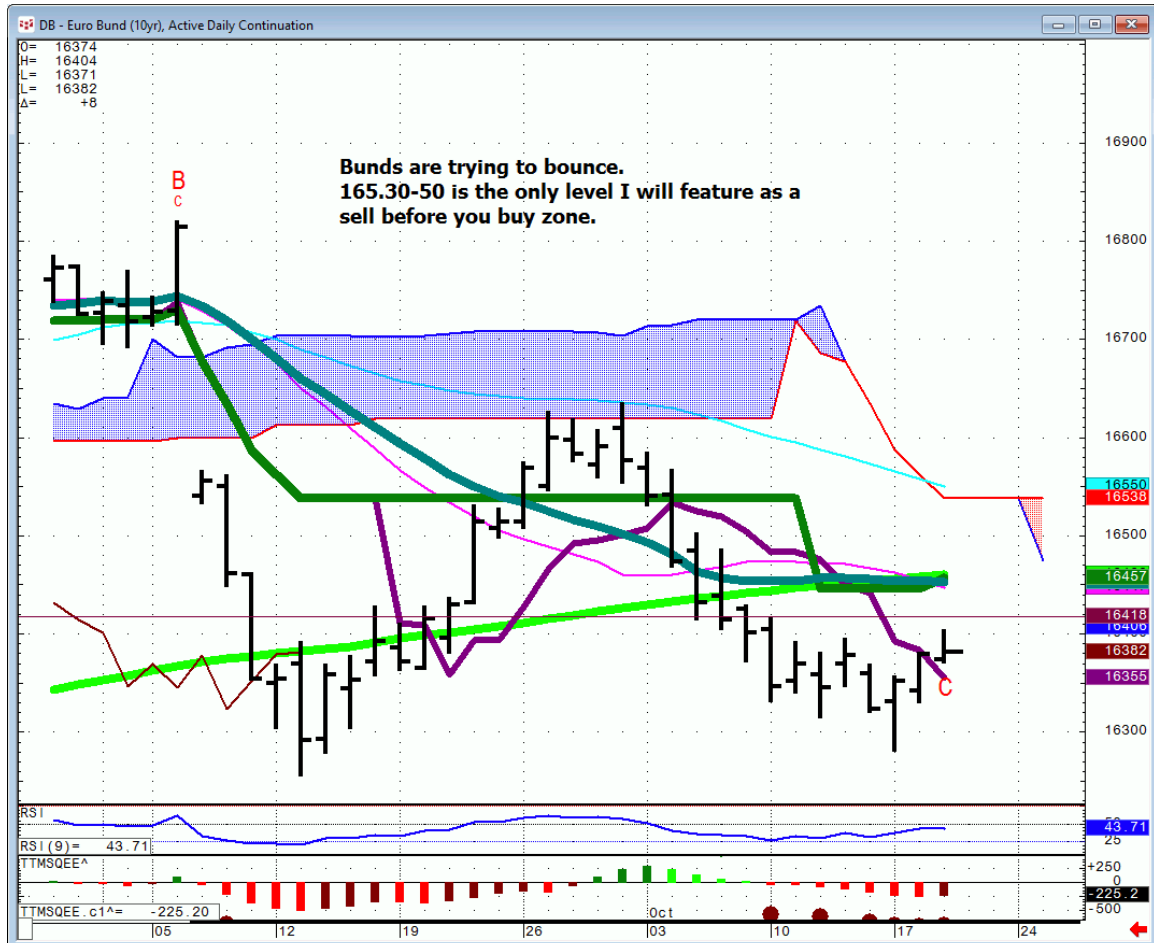


**OXY...**Occidental Petroleum has been a dog for the past few years. 71.87 is qtrly mvg avg support. This is finally sowing the seeds for a longer-term bottom. It needs help from Crude.





# Bunds...



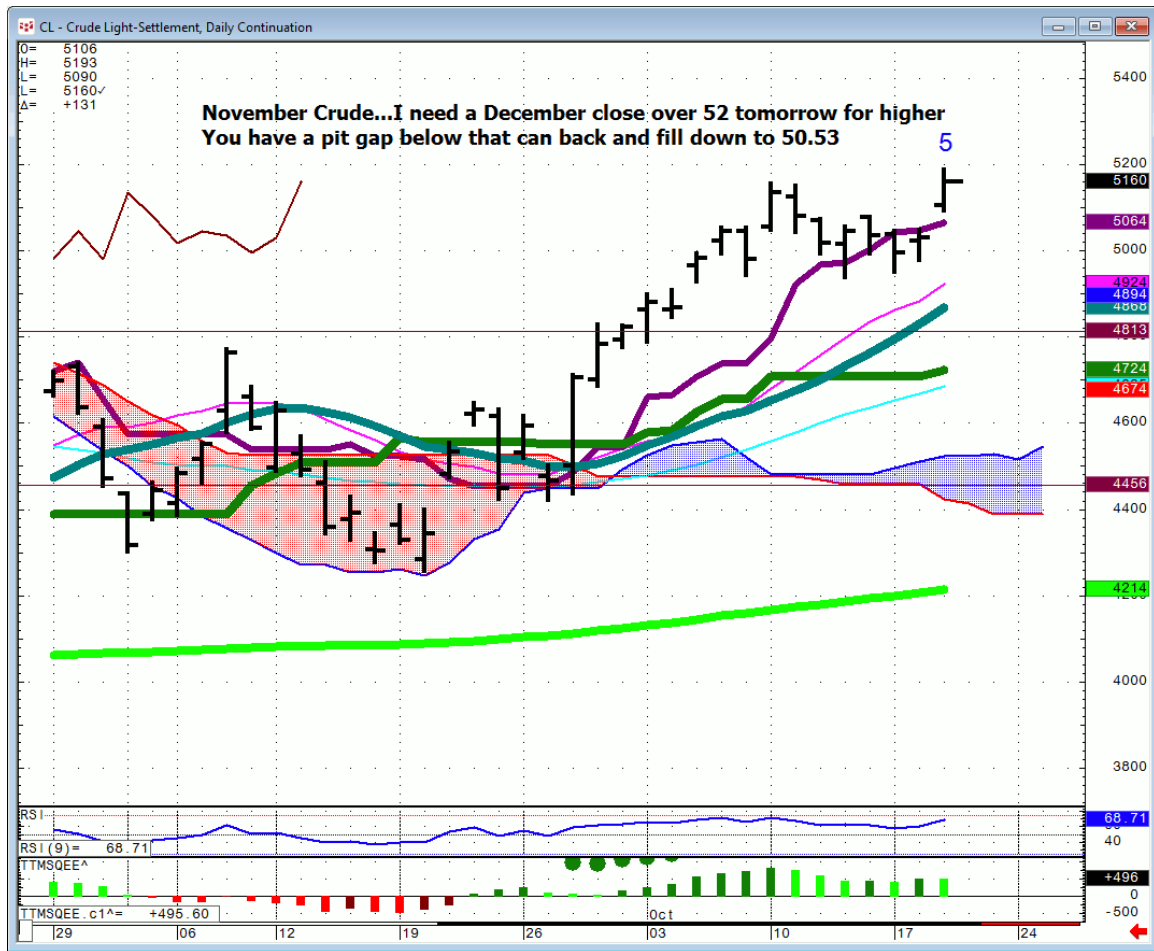
## FX

**Euro...** expect a big range in the Euro. 108.60 is initial support and bounce level. The Algos will be running this all over the place along with Draghi's mouth.



# Commodities

## Oil...



# Gold...



## **General Comments or Valuable Insight**

**Tonight is irrelevant. It's all about the ECB in the A.M.**

**Expect a volatile Euro.**

**I'm a seller of a rally in the Euro, Bund & 30 Yr. Bonds at the highlighted levels.**

**DAX is very close to a Risk On breakout as are other Indices.**

**The treasuries price action will mirror the currencies.  
U.S. 30 rally = a Euro pop.**

**The past few meetings have been volatile.**

**Given the opportunity, sell the rally in the treasuries and buy a hard break in the Indices.**

**<http://www.whitewavetradingstrategies.com/glossary/>**

**WhiteWave Trading Strategies**  
**Independent Research from the Pros Pro**

**We Trade to Make Money**  
www.whitewavetradingstrategies.com  
info@whitewavetradingstrategies.com