



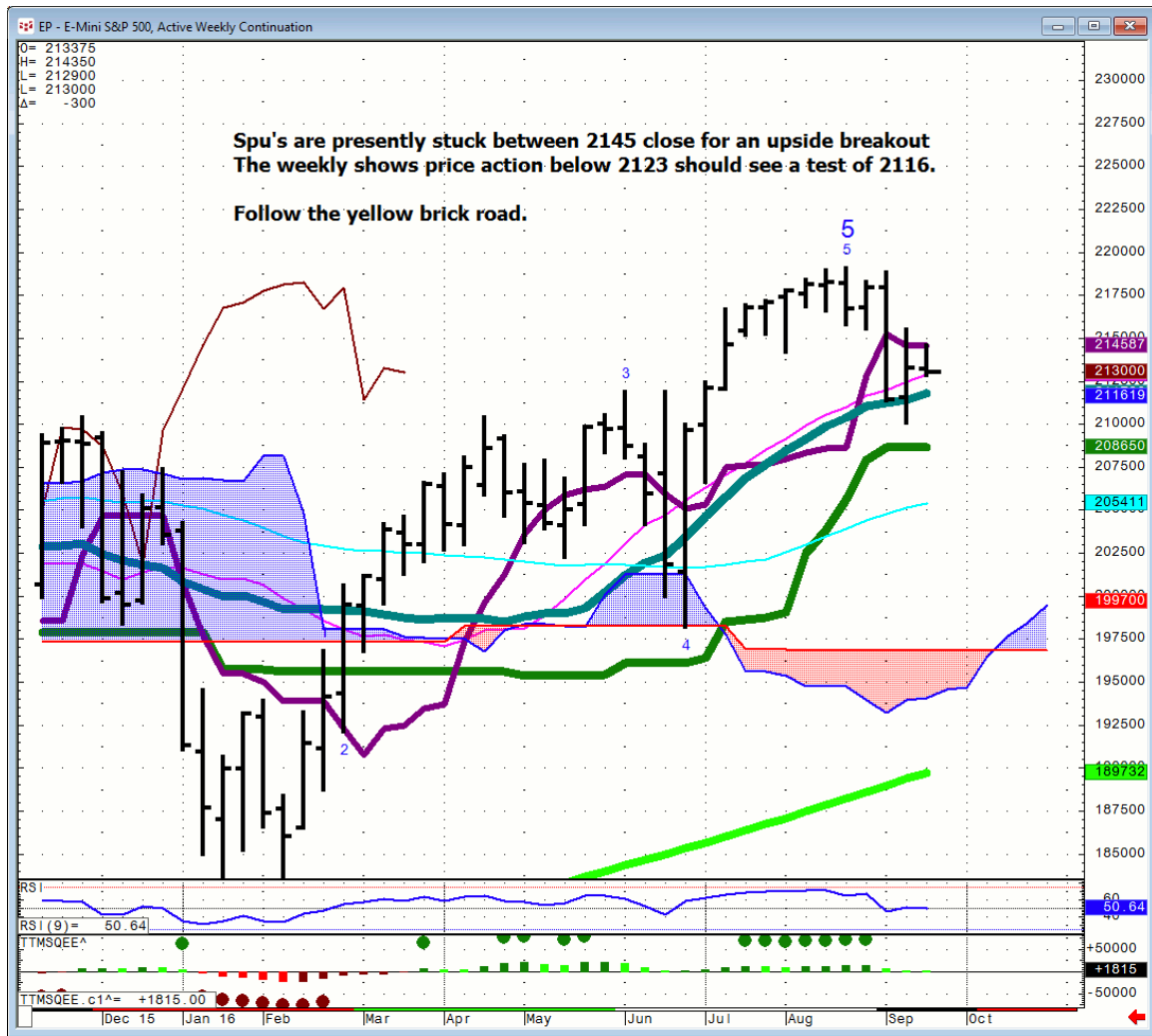
## Daily Market Intelligence

### A.M. LOOK

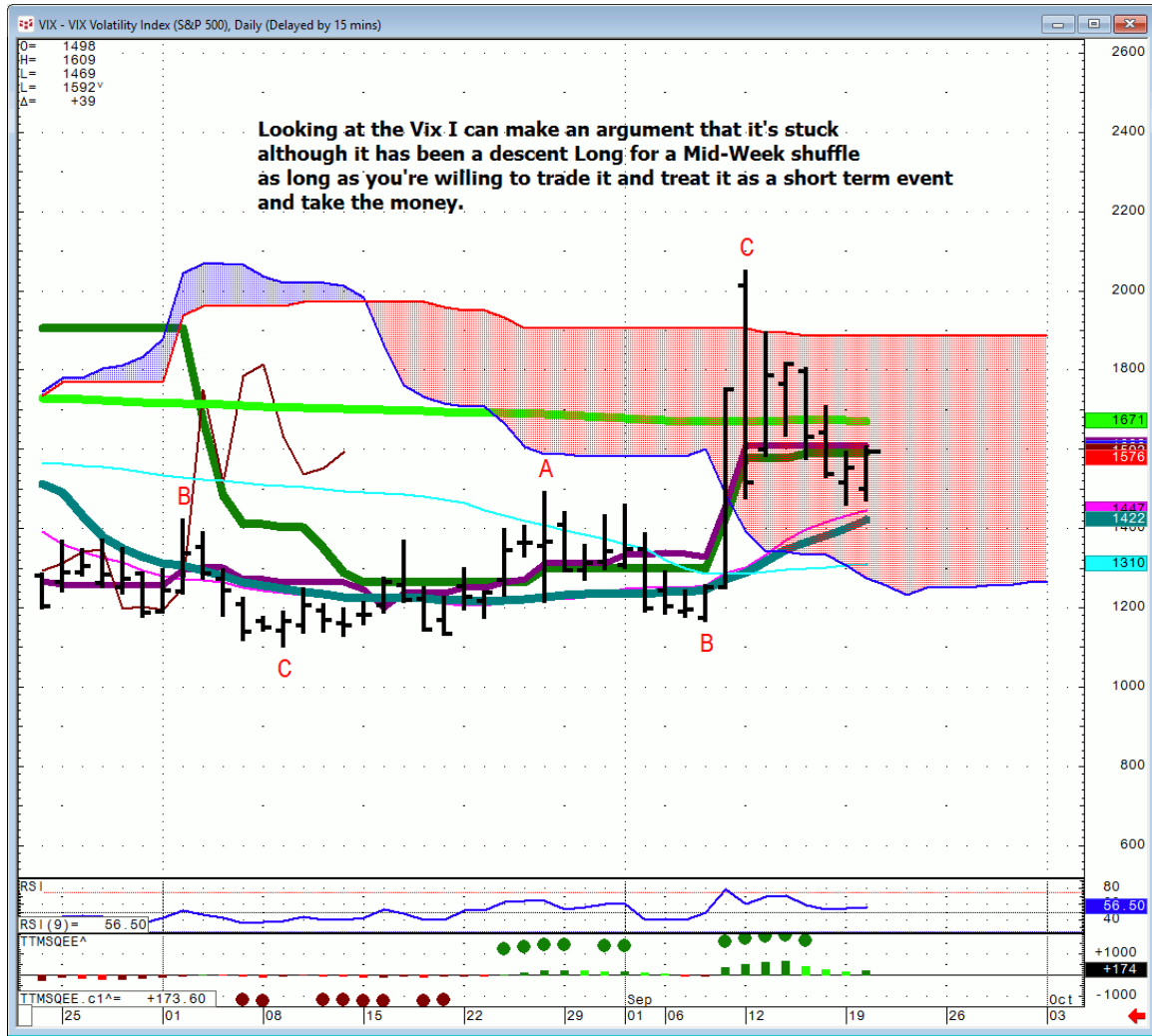
#### Stocks

<b>Futures</b>	<b>S2</b>	<b>S1</b>	<b>Qtrly Pivot</b>	<b>R1</b>	<b>R2</b>	
<b>Spu</b>		1965	2039	2090	2123	
<b>Nasd 100</b>	4103	4265	4402	4475	4575	
<b>DAX</b>	8680	9340	10,000	10,650	11,175	
<b>Nikkei</b>		14,855	16,835	17,200	18,200	
<b>ASX</b>			5075	5474	5900	
<b>FTSE</b>			5990	6490	6751	6962
<b>DSX</b>			2860	3060	3245-90	3490

Spu...

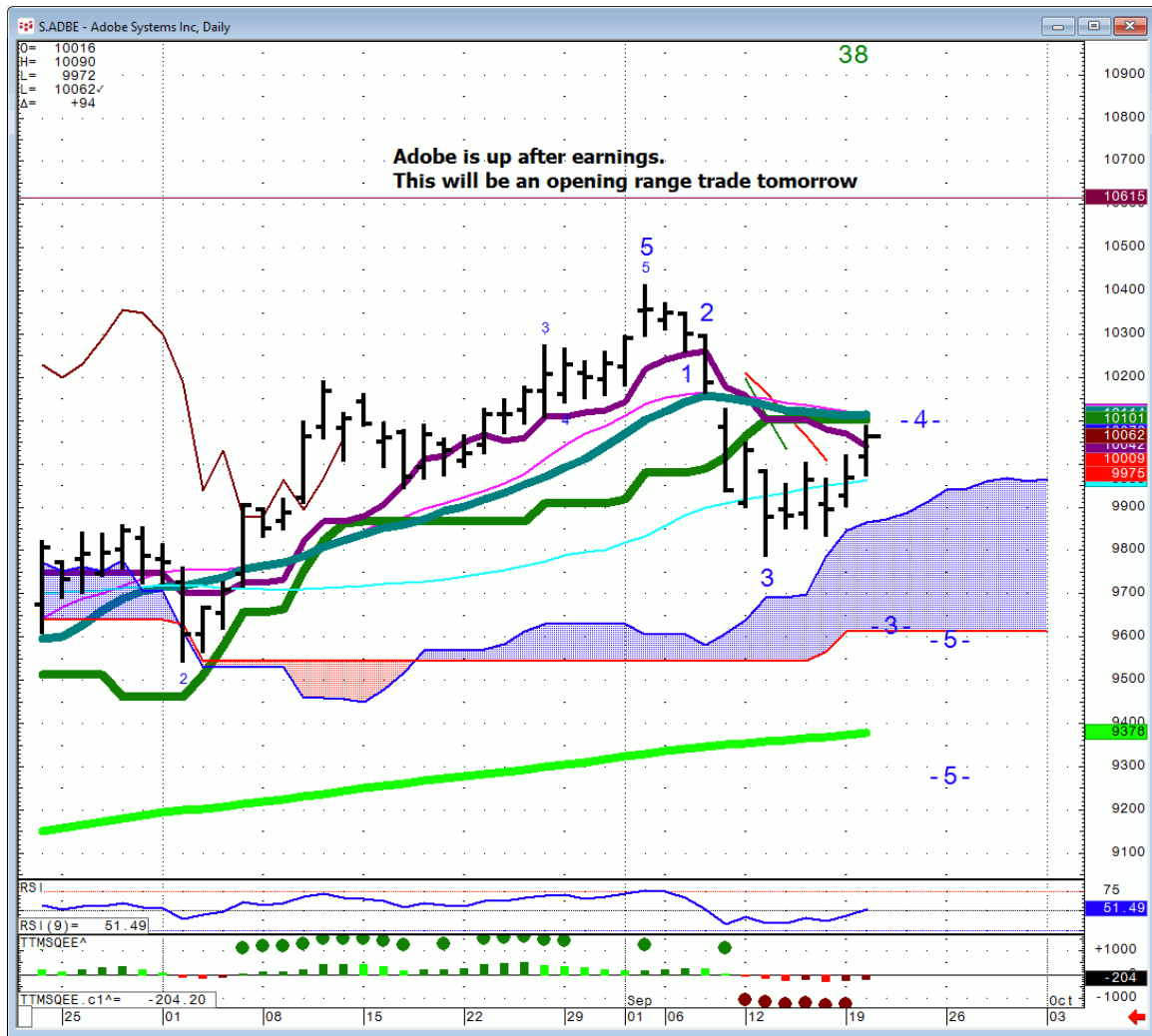


# VIX...





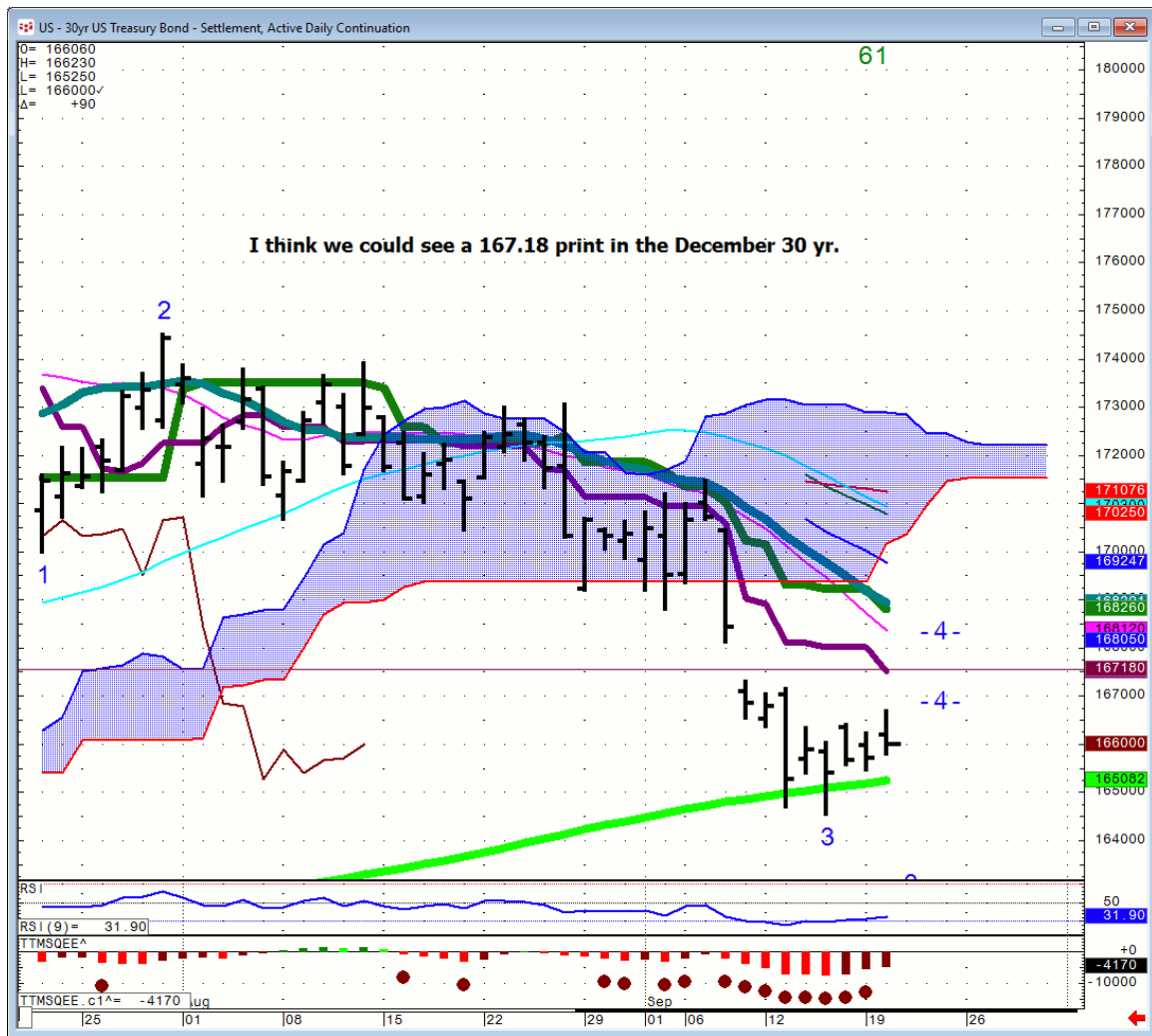
# ADBE..Adobe



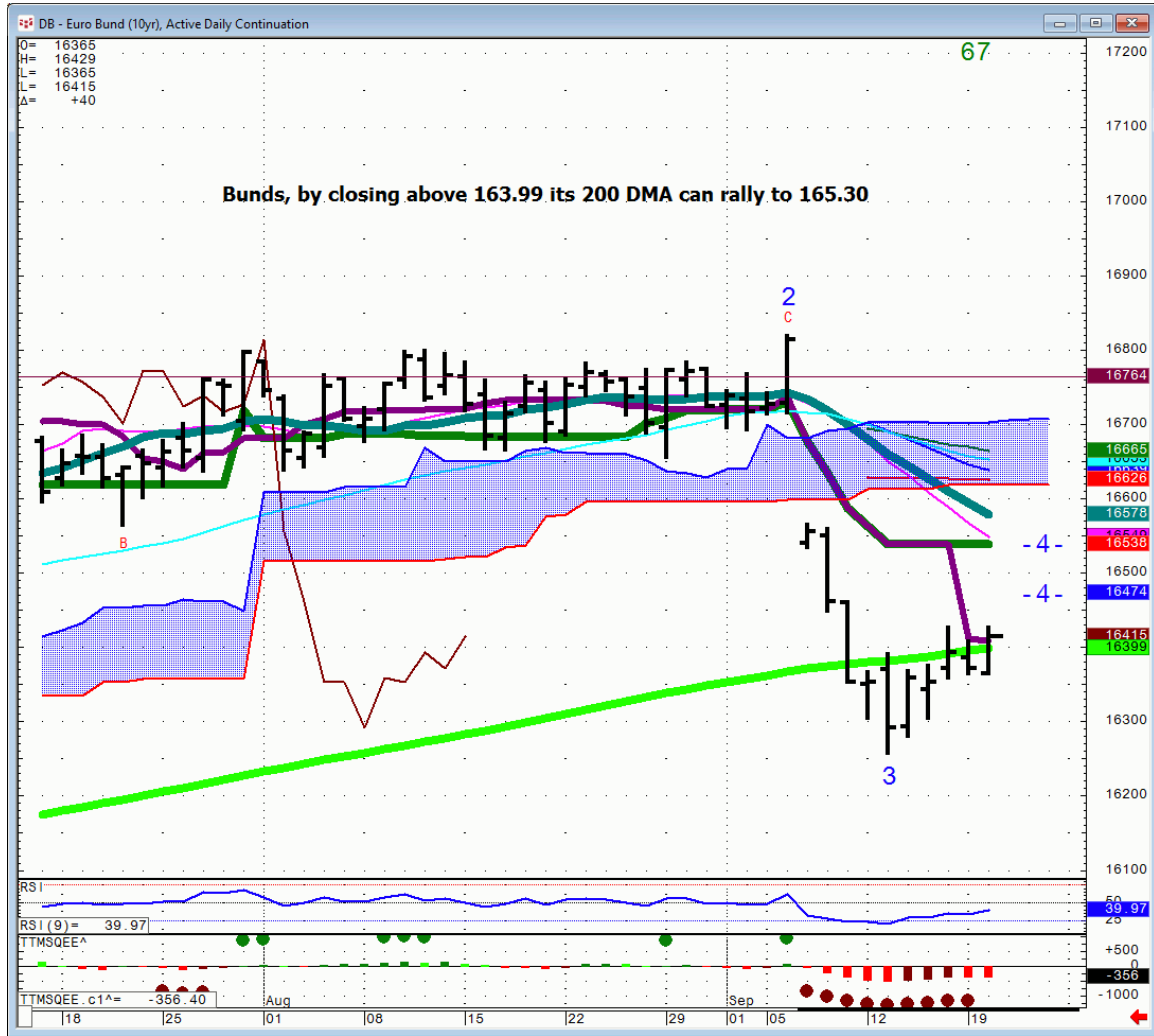
## Bonds

Futures		S1	Qtrly Pivot	R1
30 Yr.	163	166.04	170.19	
Bund		159.07	165.3	

30 yr...



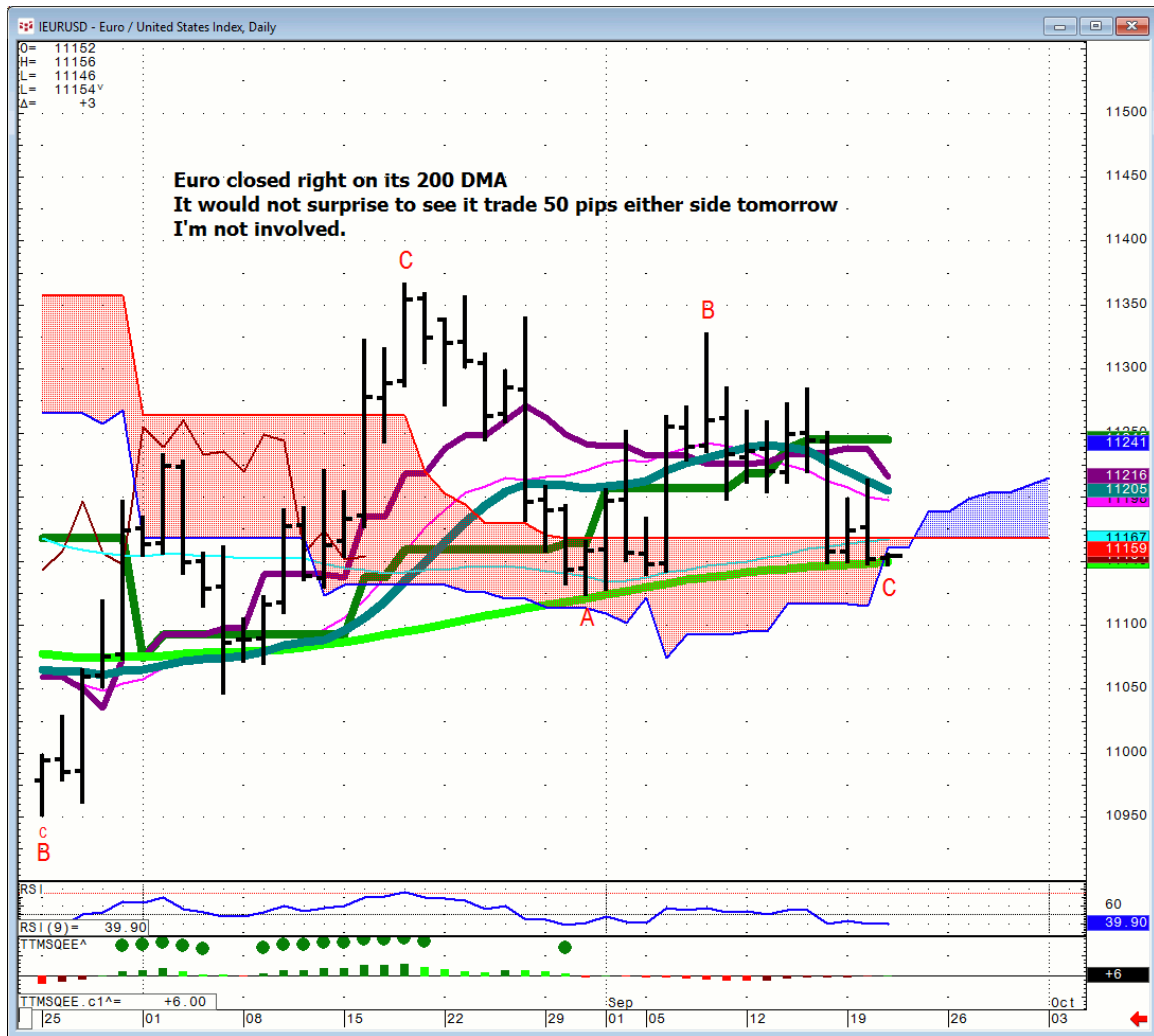
# Bund...



# FX

FX	S1	Qtrly Pivot	R1		
<b>Euro</b>	108.25	111	112.85		
<b>GBP/USD</b>		145.4	148.2		
<b>AUD/USD</b>	71.3	72.6	76.78	77.7	82.1
<b>NZD/USD</b>	63.1	67	73.9		
<b>USD/CAD</b>	133.85	128.5	123.15		
<b>CA6</b>	74.75	77.82	81.2		
<b>USD/JPY</b>	107.21	106.38	103	99	
<b>JY6</b>	93.35	9400	97.07	101.25	
<b>DXE</b>	88.07	92.9	100.2		

## Euro...



## *Commodities*

<b>Commodity</b>		<b>S1</b>	<b>Qtrly Pivot</b>	<b>R1</b>			
<b>OIL</b>	34.75	42.75	44.40-60		46.62	48.5	50.2
<b>Gold</b>		1175	1238		1307	1420	
<b>Copper</b>	1.9	2.125	2.21		2.33	2.77	
<b>Silver</b>			17.85		21.54	28.83	

## **General Comments or Valuable Insight**

**I could handicap all the possible scenarios going though BOJ tonight into the Fed tomorrow but I'm not.**

**It's just another big Mid-Week shuffle.**

**I have hard #'s in the Nasd & Spu's to be bullish closing above. I've laid out the possible downside.**

**I'm sure everyone will lose money tomorrow.**

**What I'm not going to do is chase strength Mid-Week in MSFT,ADBE or FDX with out them settling down first.**

**Everybody and their mother is short Euro. If there is no raise or really hawkish rhetoric you'll likely see both sides get rinsed.**

**Enjoy, life is too short for a coin toss in the currencies on a couple of statements. Rather you'd be better served waiting out the volatility for a clearer picture.**

**I will say that a surprise rise in rates should implode the Gold, electing short-term sell stops below 1305 initially targeting 1290.**

**<http://www.whitewavetradingstrategies.com/glossary/>**

**WhiteWave Trading Strategies**  
**Independent Research from the Pros Pro**

**We Trade to Make Money**

[www.whitewavetradingstrategies.com](http://www.whitewavetradingstrategies.com)

[info@whitewavetradingstrategies.com](mailto:info@whitewavetradingstrategies.com)