



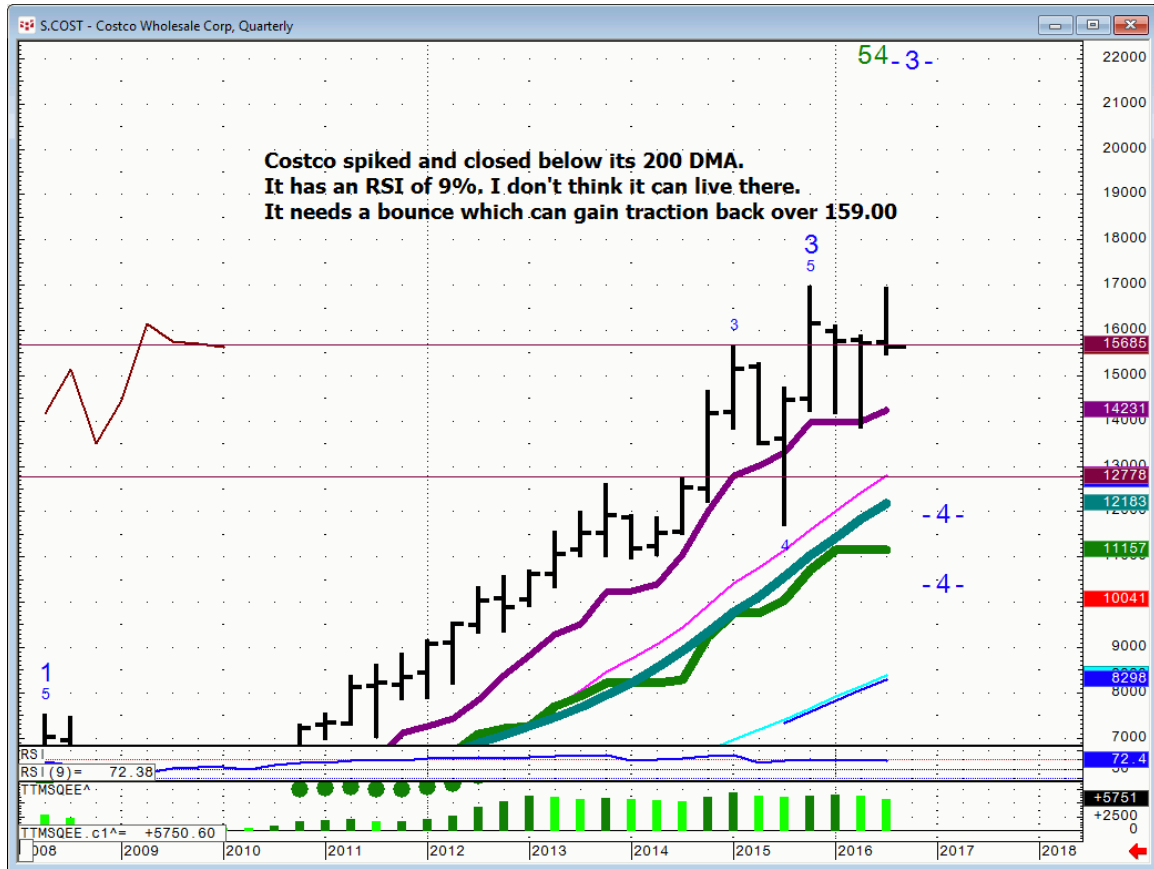
Daily Market Intelligence

A.M. LOOK

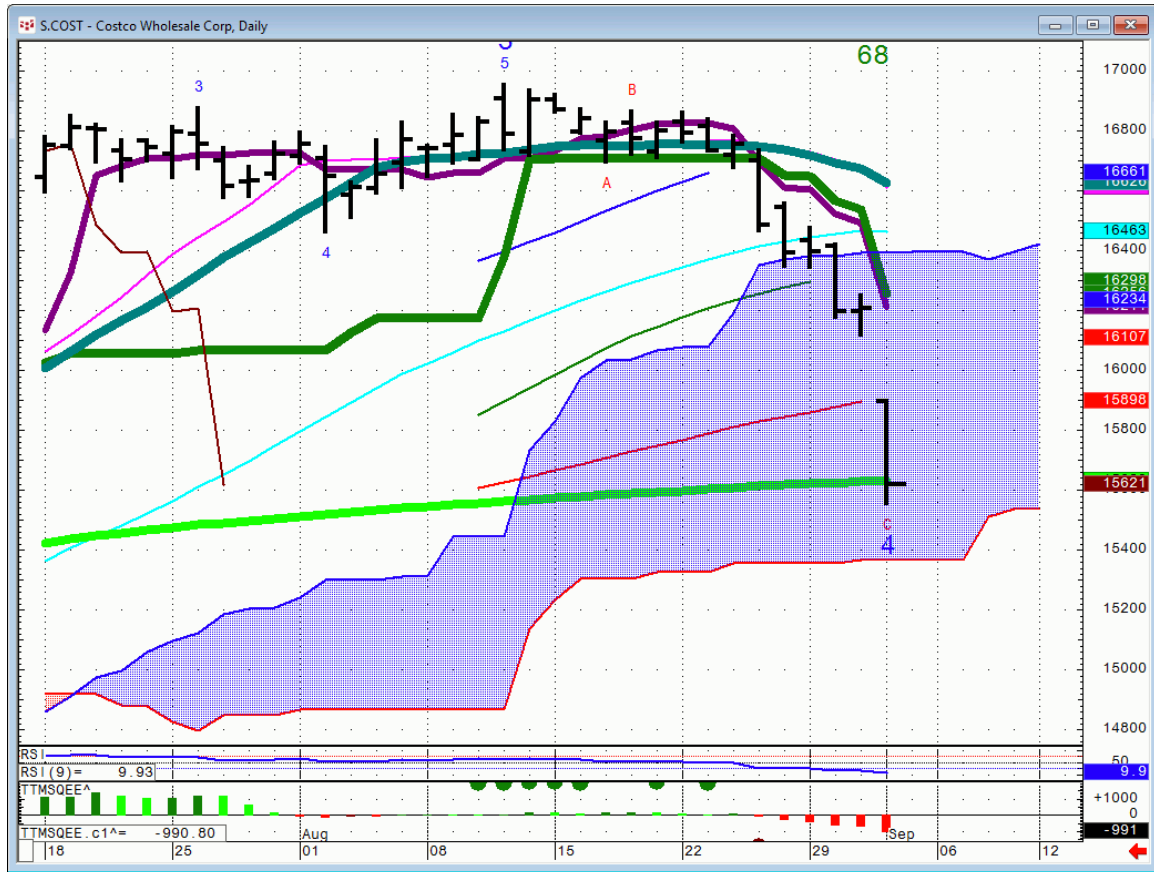
Stocks

Futures	S2	S1	Qtrly Pivot	R1	R2	
Spu		1965	2039	2090	2123	
Nasd 100	4103	4265	4402	4475	4575	
DAX	8680	9340	10,000	10,650	11,175	
Nikkei		14,855	16,835	17,200	18,200	
ASX			5075	5474	5900	
FTSE			5990	6490	6751	6962
DSX			2860	3060	3245-90	3490

COST...Qtrly



COST...daily



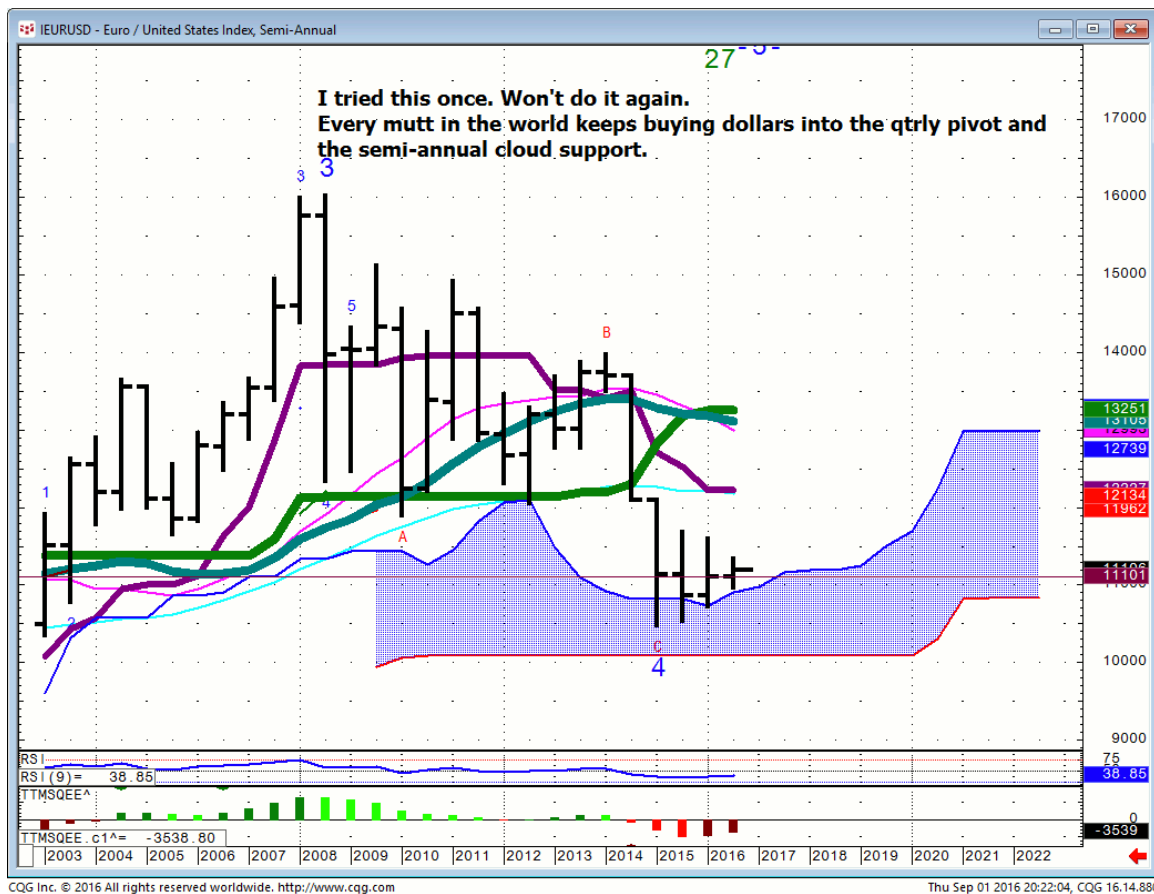
Bonds

Futures		S1	Qtrly Pivot	R1
30 Yr.	163	166.04	170.19	
Bund		159.07	165.3	

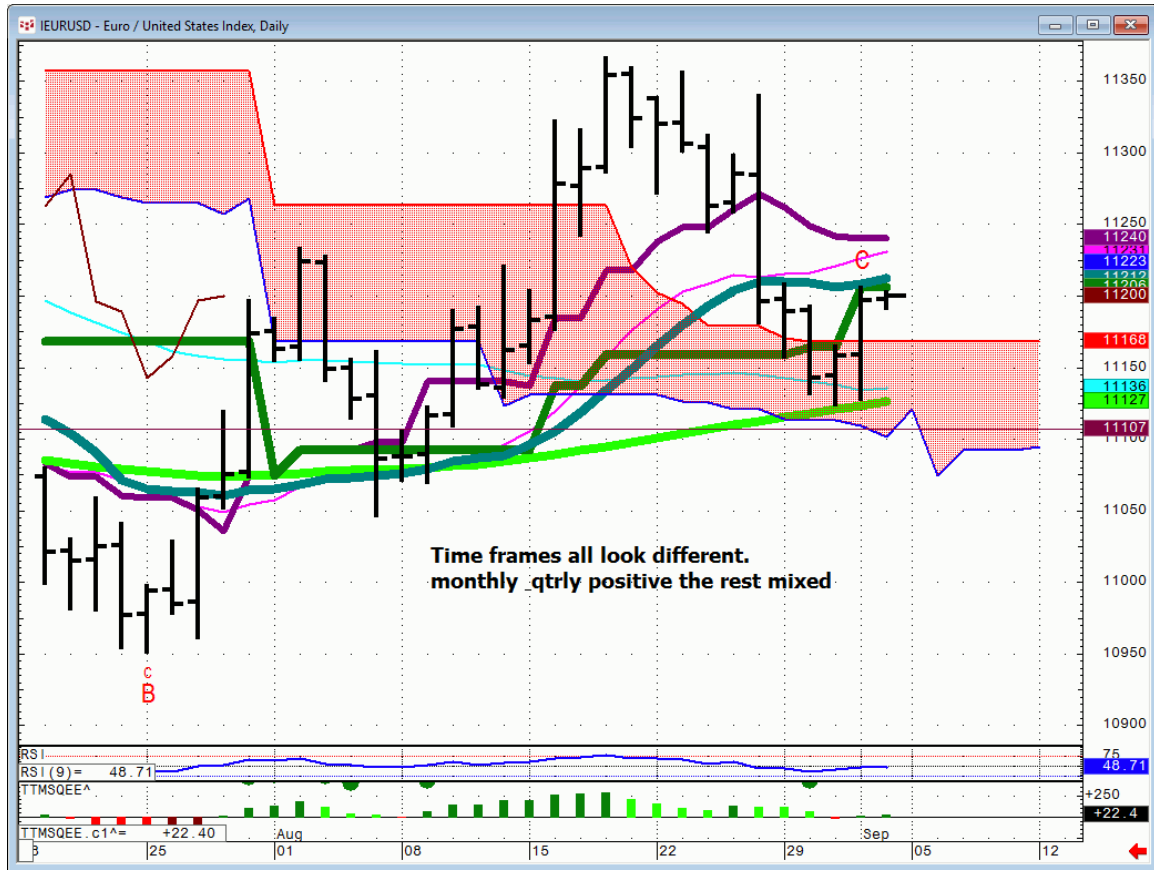
FX

FX	S1	Qtrly Pivot	R1		
Euro	108.25	111	112.85		
GBP/USD		145.4	148.2		
AUD/USD	71.3	72.6	76.78	77.7	82.1
NZD/USD	63.1	67	73.9		
USD/CAD	133.85	128.5	123.15		
CA6	74.75	77.82	81.2		
USD/JPY	107.21	106.38	103	99	
JY6	93.35	9400	97.07	101.25	
DXE	88.07	92.9	100.2		

Euro...semi-annual



Euro...daily



Commodities

Commodity		S1	Qtrly Pivot	R1		
OIL	34.75	42.75	44.40-60	46.62	48.5	50.2
Gold		1175	1238	1307	1420	
Copper	1.9	2.125	2.21	2.33	2.77	
Silver			17.85	21.54	28.83	

General Comments or Valuable Insight

I say pretty much the same thing every month.

Follow the Bonds, for they will run the early show.

**Bonds down=Gold down and Dollar up.
Bonds higher=just the opposite.**

Equity Indices tend to have a couple of swings both up and down.

I'll start buying the Equity Indices when the Spu's hit 2123.

I'm not picking the wiggles in the Indices nor handicapping this race.

I've had a couple of good looks this week with weakening oil and an oversold Mining complex bounce.

I think I'll leave well enough alone and give it a rest.

<http://www.whitewavetradingstrategies.com/glossary/>

WhiteWave Trading Strategies
Independent Research from the Pros Pro

We Trade to Make Money

www.whitewavetradingstrategies.com

info@whitewavetradingstrategies.com