



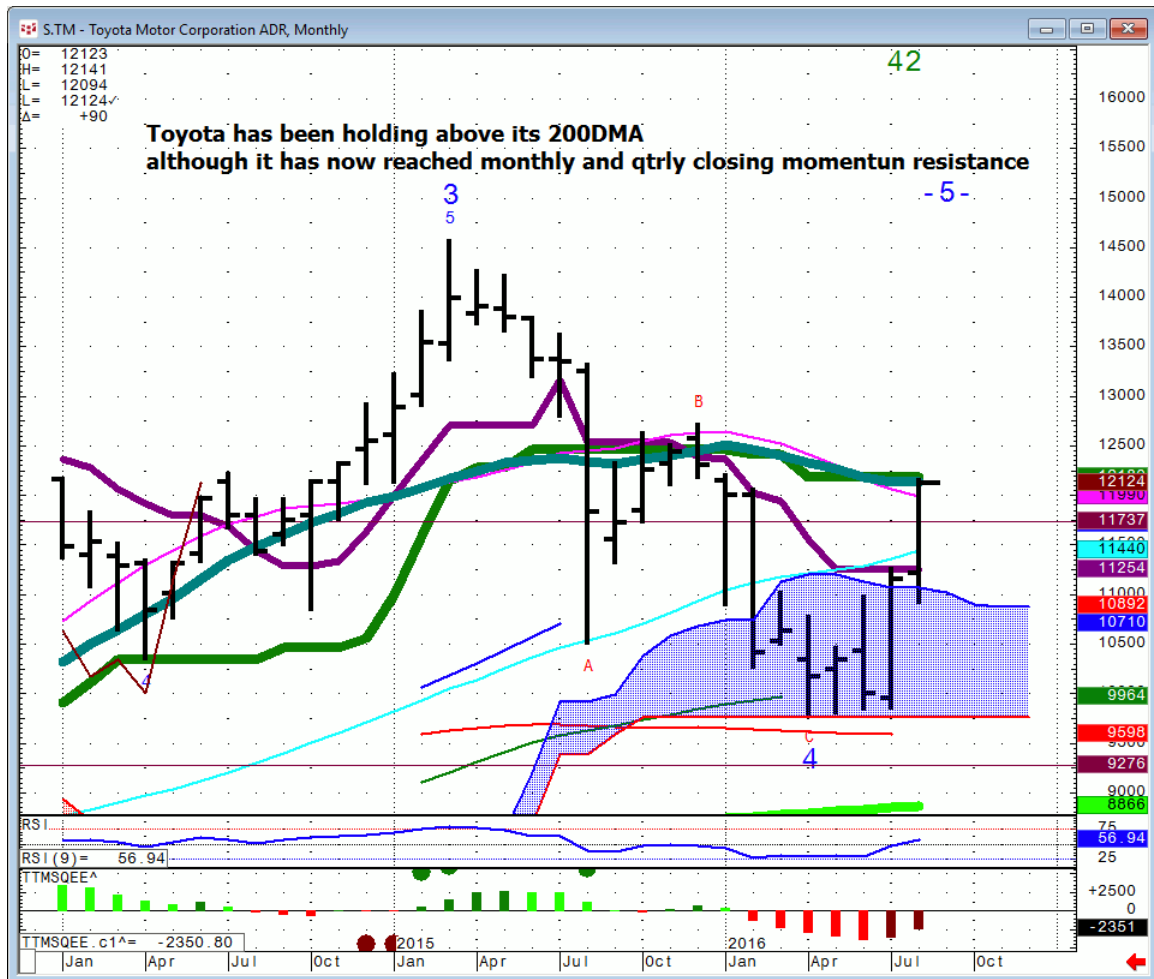
Daily Market Intelligence

A.M. LOOK

Stocks

Futures	S2	S1	Qtrly Pivot	R1	R2	
Spu		1965	2039	2090	2123	
Nasd 100	4103	4265	4402	4475	4575	
DAX	8680	9340	10,000	10,650	11,175	
Nikkei		14,855	16,835	17,200	18,200	
ASX			5075	5474	5900	
FTSE			5990	6490	6751	6962
DSX			2860	3060	3245-90	3490

TM...



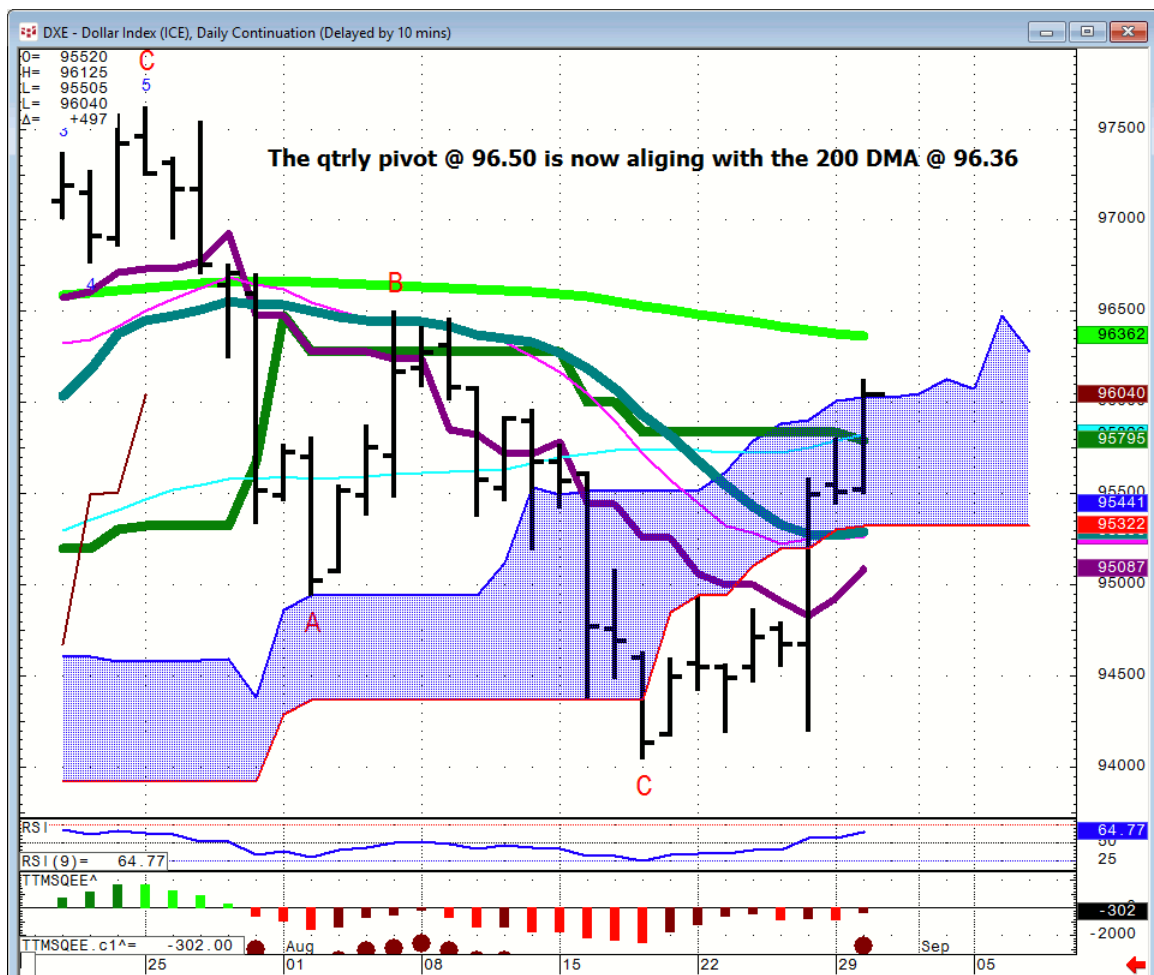
Bonds

Futures		S1	Qtrly Pivot	R1
30 Yr.	163	166.04	170.19	
Bund		159.07	165.3	

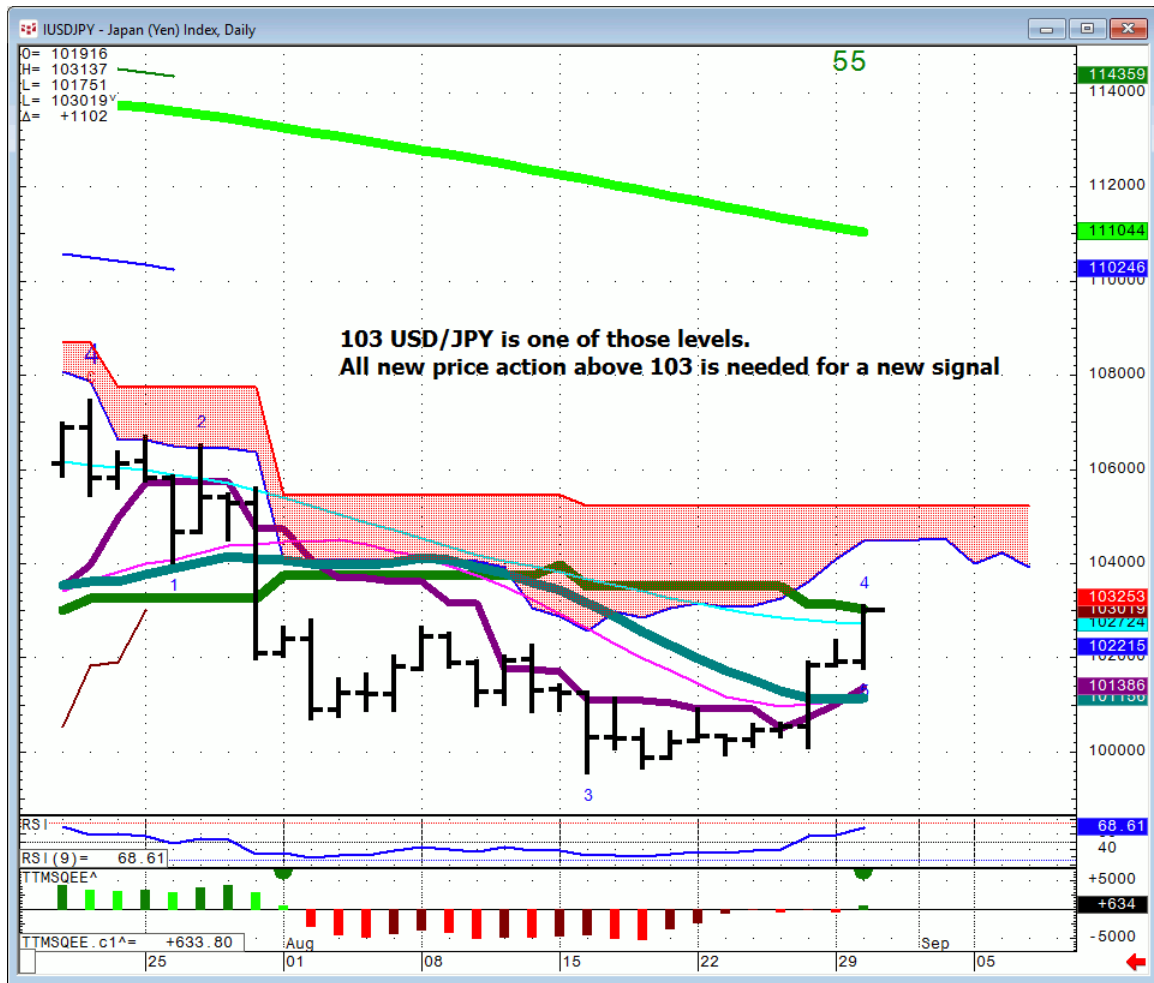
FX

FX		S1	Qtrly Pivot	R1		
Euro		108.25	111	112.85		
GBP/USD			145.4	148.2		
AUD/USD	71.3	72.6	74	76.78	77.7	82.1
NZD/USD	63.1	67	70.6	73.9		
USD/CAD		133.85	128.5	123.15		
CA6		74.75	77.82	81.2		
USD/JPY		107.21	106.38	103	99	
JY6		93.35	9400	97.07	101.25	
DXE	88.07	92.9	96.5	100.2		

DXE...



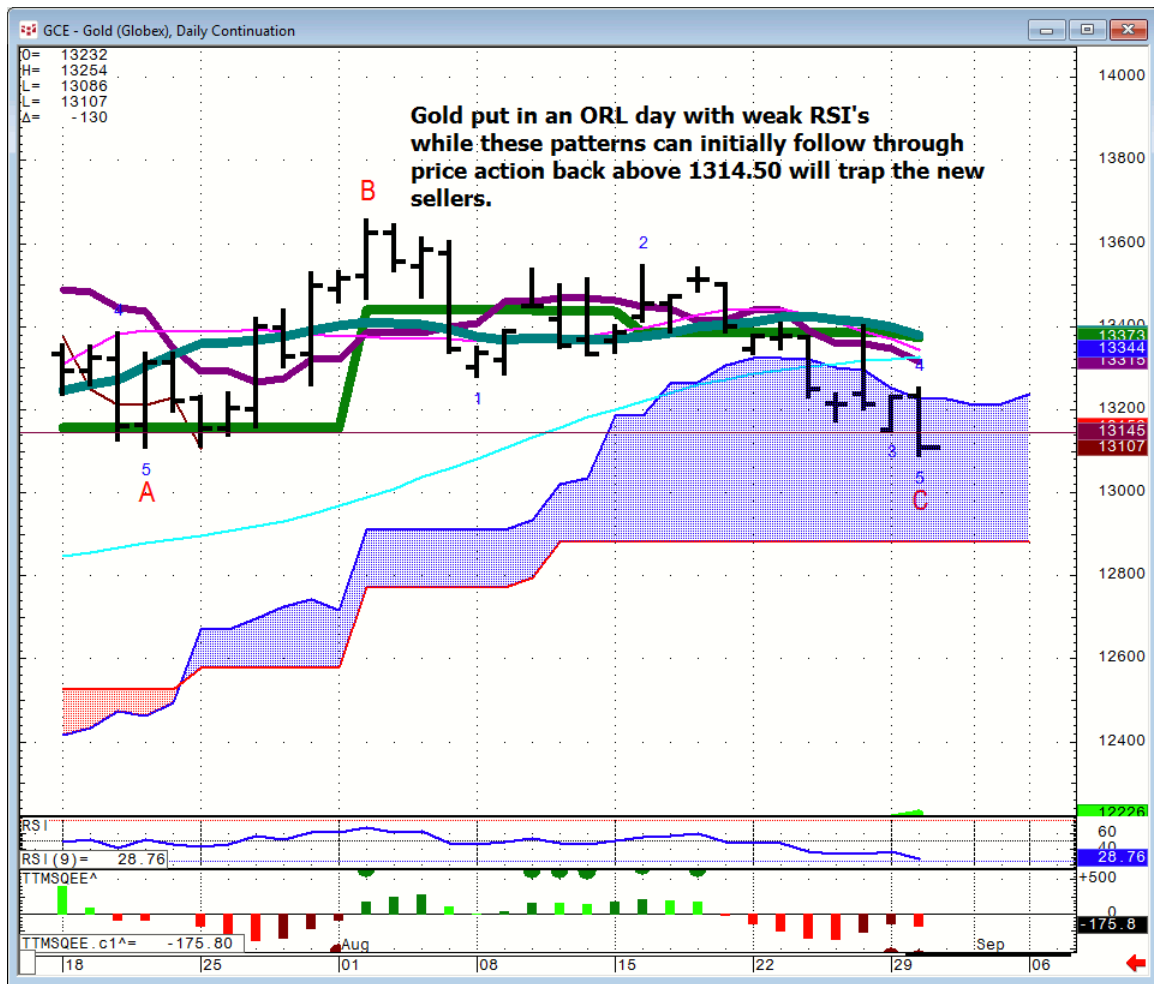
USD/JPY...



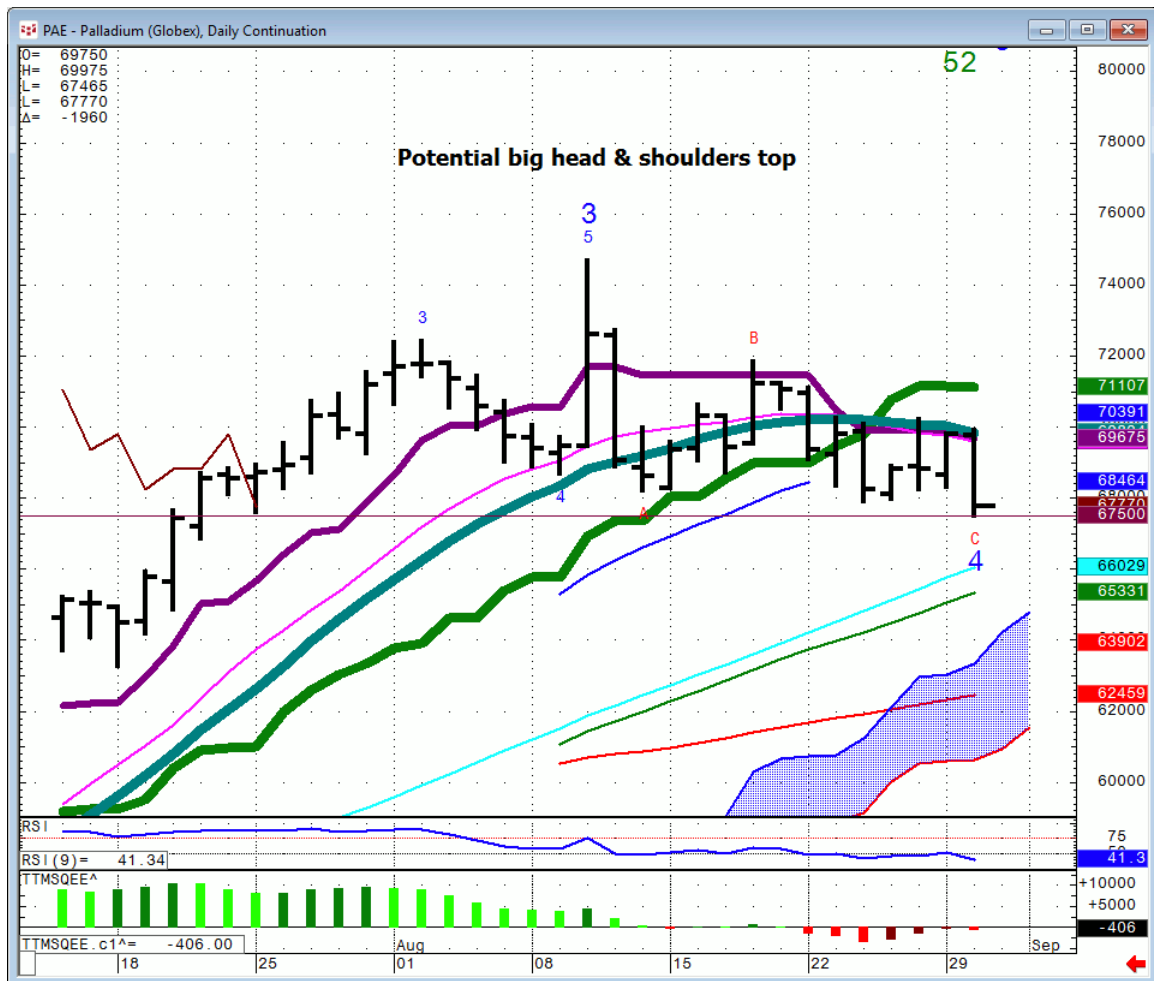
Commodities

Commodity		S1	Qtrly Pivot	R1		
OIL	34.75	42.75	44.40-60	46.62	48.5	50.2
Gold		1175	1238	1307	1420	
Copper	1.9	2.125	2.21	2.33	2.77	
Silver			17.85	21.54	28.83	

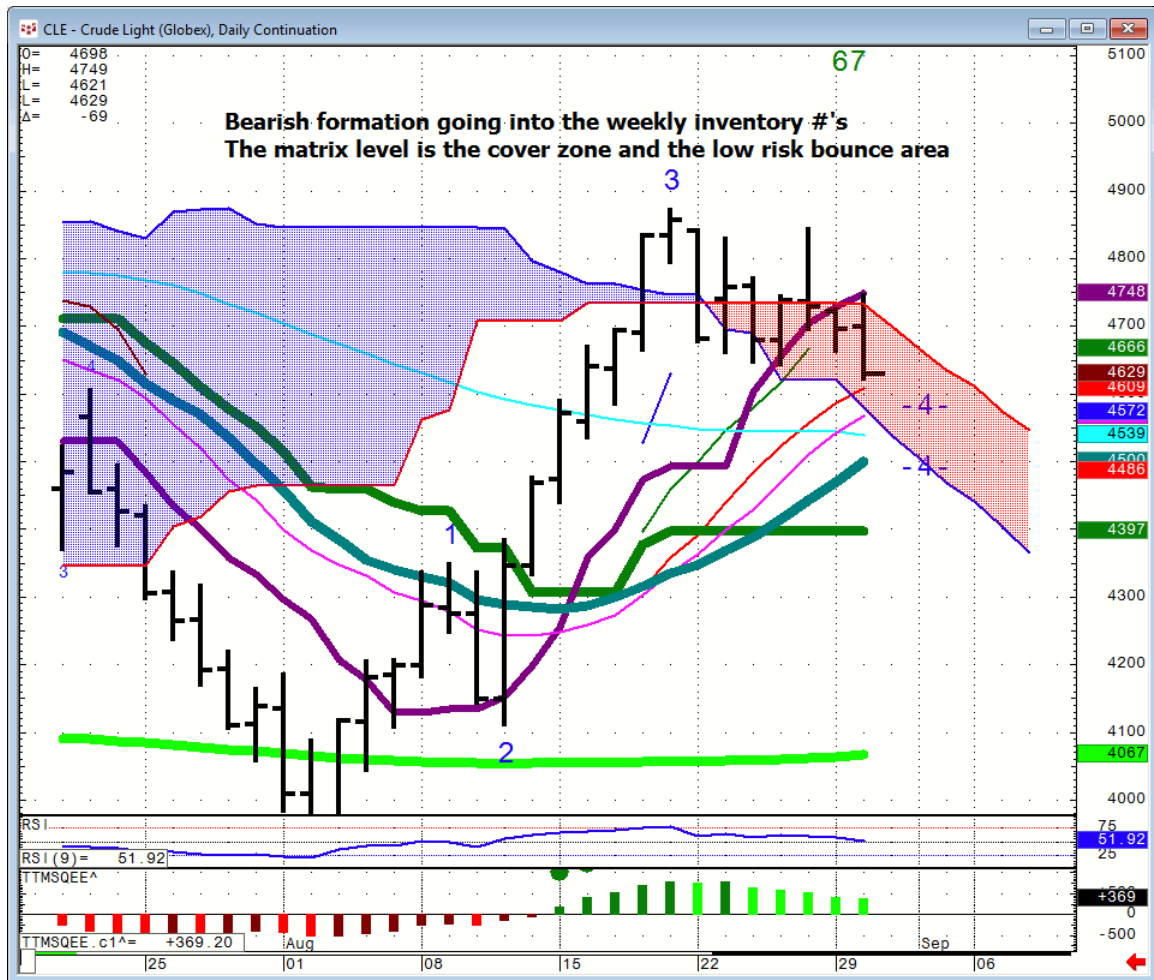
Gold...click on the glossary link and read ORL



Palladium...I'm watching to see how this plays out vis a vis the auto companies since palladium is used in catalytic converters.



Oil...



General Comments or Valuable Insight

It should be an interesting mid-week shuffle with ADP in the A.M. everyone will be handicapping Friday's payroll #'s in thin markets.

Both the Euro Stoxx 50 & Dax had wood all A.M. and closed just shy of their respective matrix levels.

These levels will act as short-term resistance and the upside closing pivots.

It was hard to tell if today's weakness in the U.S. indices & FTSE was merely an unwinding of Long U.S. & FTSE/Short Europe positions put on after Brexit or the beginning of something bigger that I've been waiting to develop in the U.S. indices for weeks.

Time Frame Trading. Just a note, the short covering rallies have been materializing around 2 P.M. CDT. This is when the algos need to square up for the day.

Follow the Bonds in the A.M. Lower Bond futures should continue to pressure Metals and propel Financials.

Stronger Futures/just the opposite.

**It's the Last day of the month.
Be patient and don't fade late day flows.**

<http://www.whitewavetradingstrategies.com/glossary/>

WhiteWave Trading Strategies
Independent Research from the Pros Pro
We Trade to Make Money

www.whitewavetradingstrategies.com
info@whitewavetradingstrategies.com