



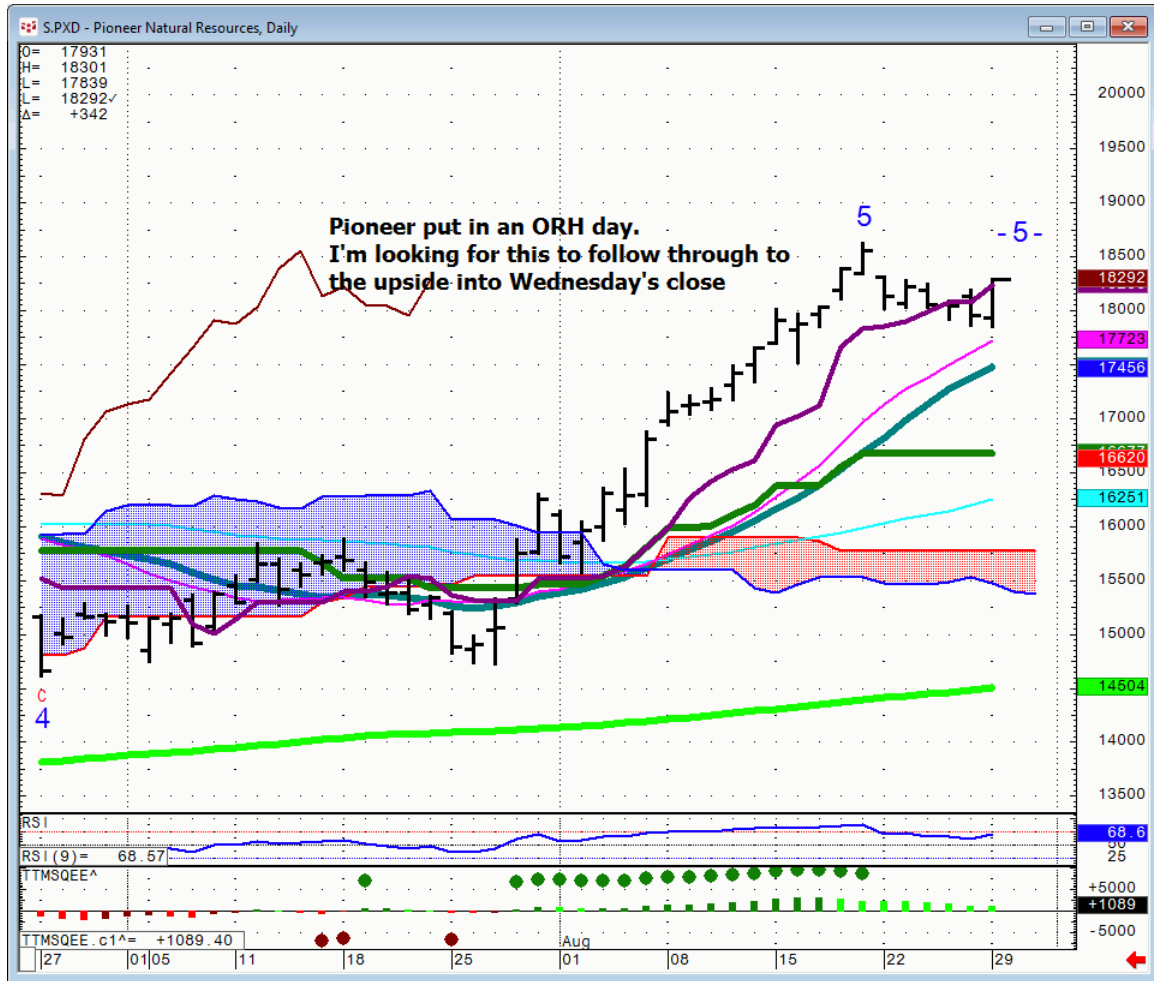
## Daily Market Intelligence

### A.M. LOOK

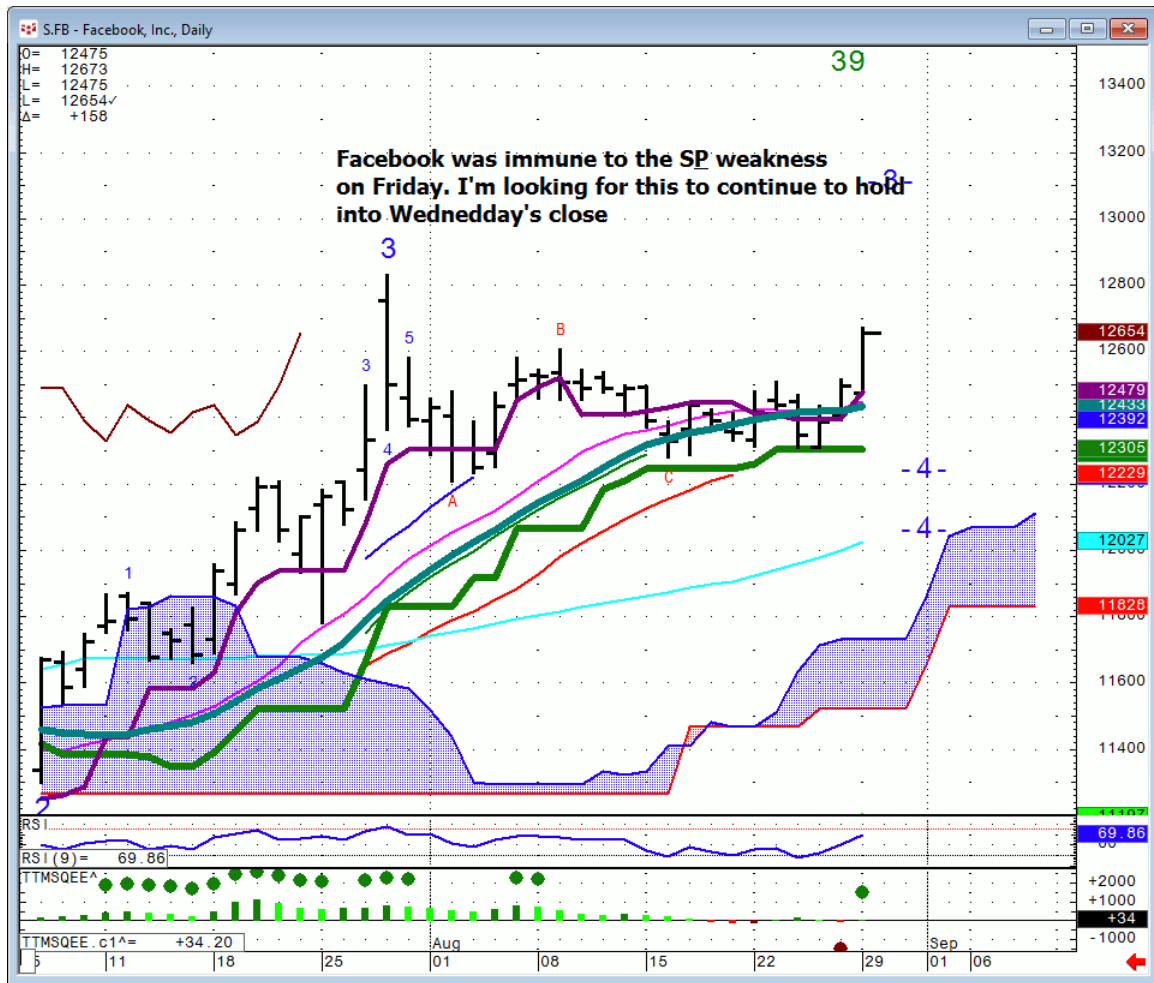
#### Stocks

<b>Futures</b>	<b>S2</b>	<b>S1</b>	<b>Qtrly Pivot</b>	<b>R1</b>	<b>R2</b>	
<b>Spu</b>		1965	2039	2090	2123	
<b>Nasd 100</b>	4103	4265	4402	4475	4575	
<b>DAX</b>	8680	9340	10,000	10,650	11,175	
<b>Nikkei</b>		14,855	16,835	17,200	18,200	
<b>ASX</b>			5075	5474	5900	
<b>FTSE</b>			5990	6490	6751	6962
<b>DSX</b>			2860	3060	3245-90	3490

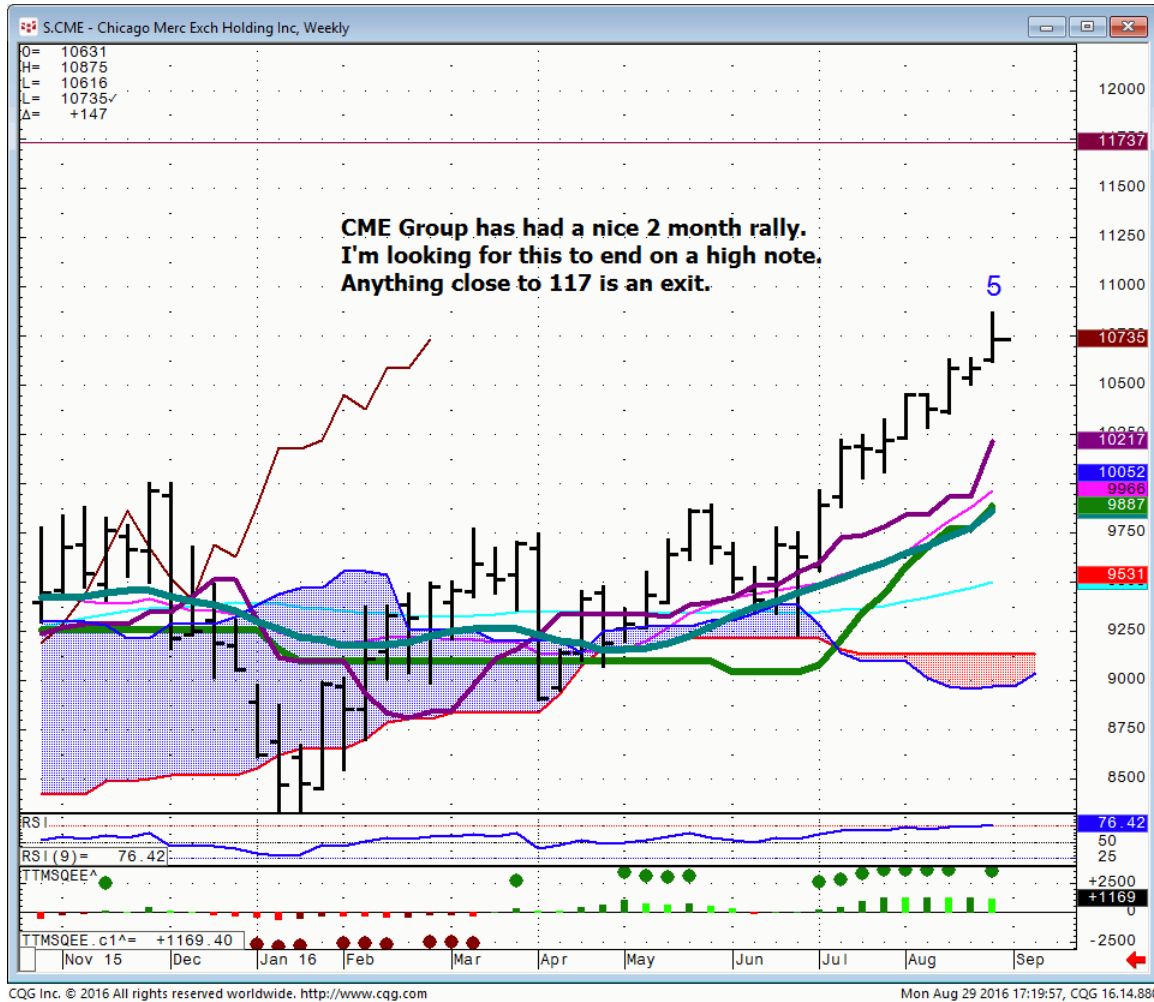
# PXD..



FB...



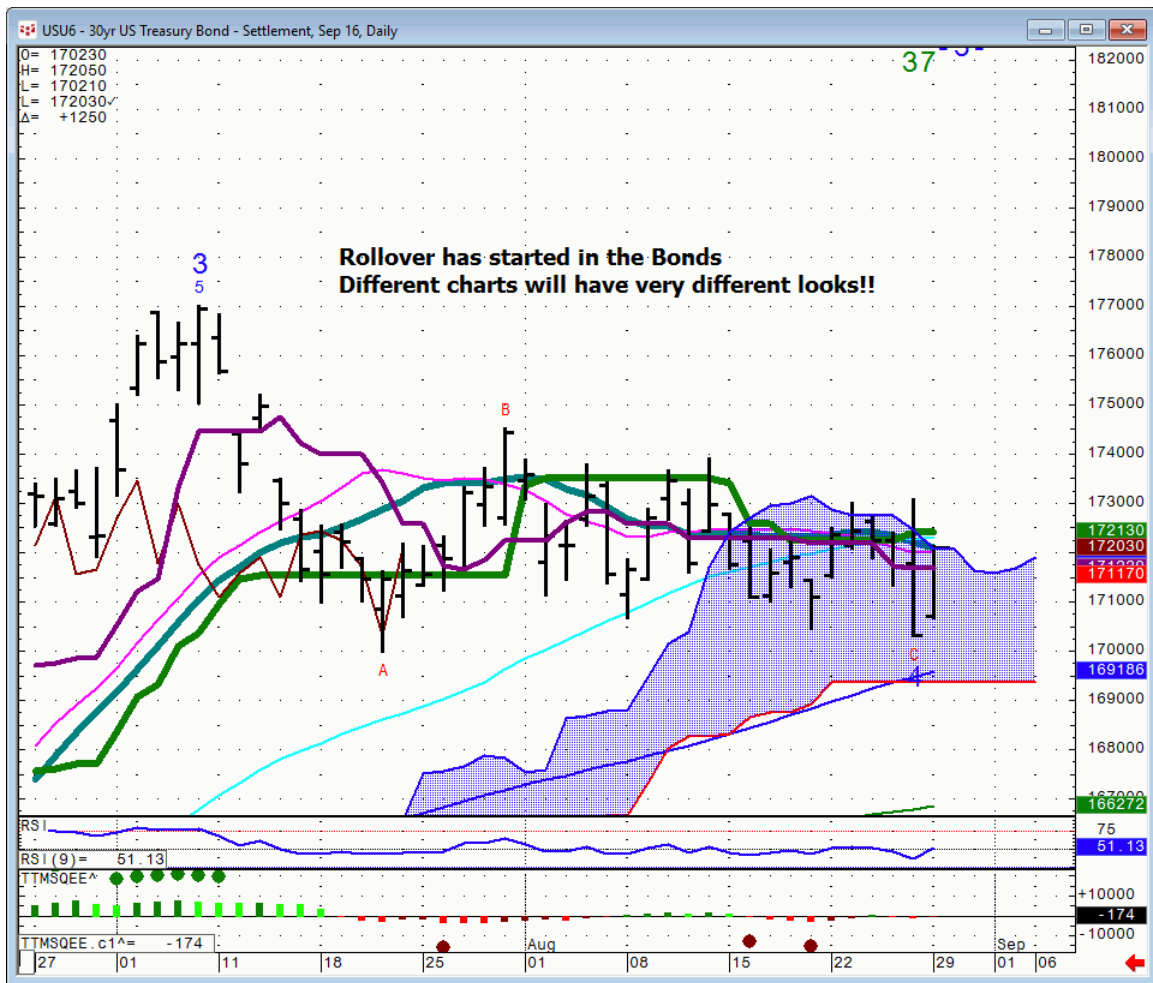
# CME...



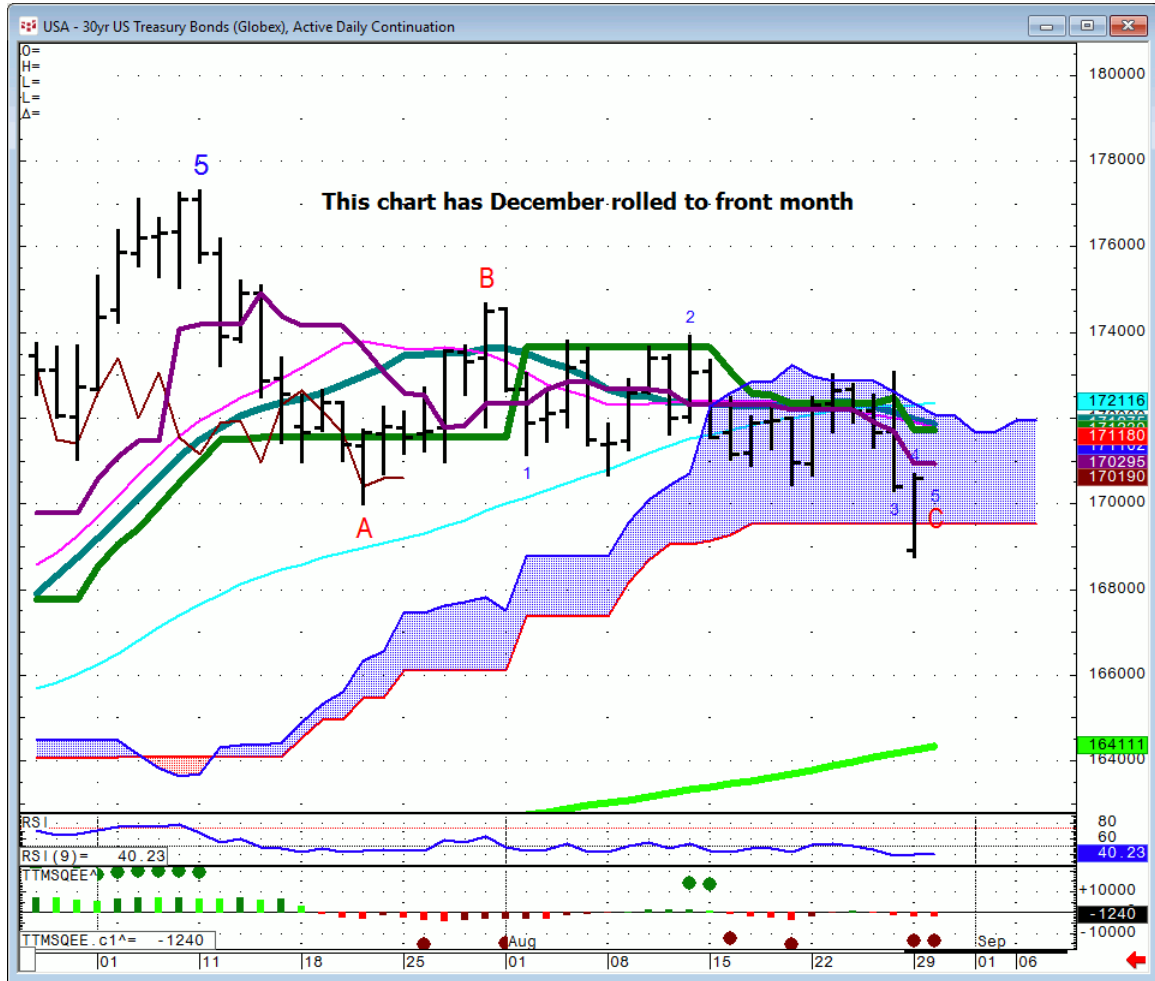
## Bonds

Futures		S1	Qtrly Pivot	R1
30 Yr.	163	166.04	170.19	
Bund		159.07	165.3	

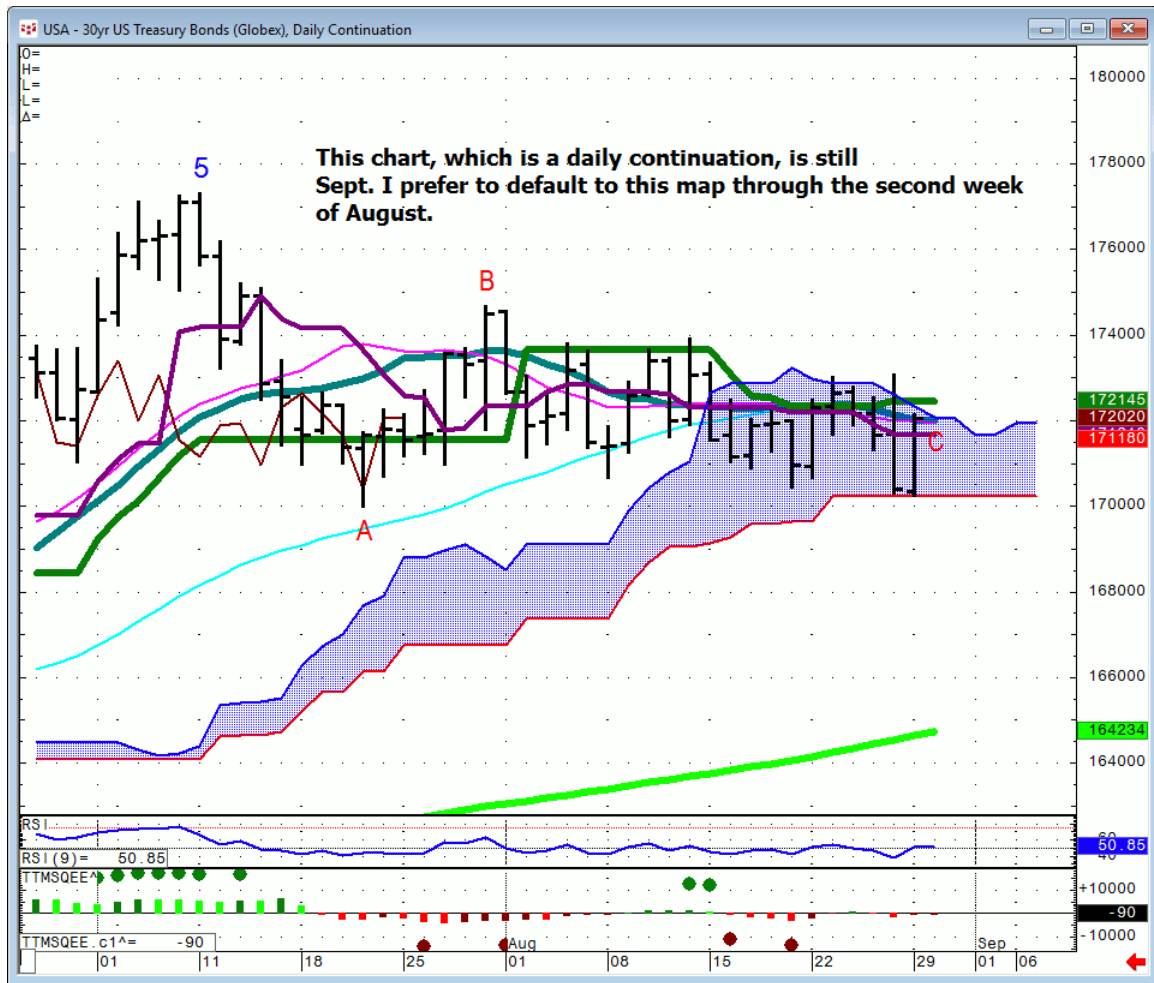
### 30 yr.. September Daily



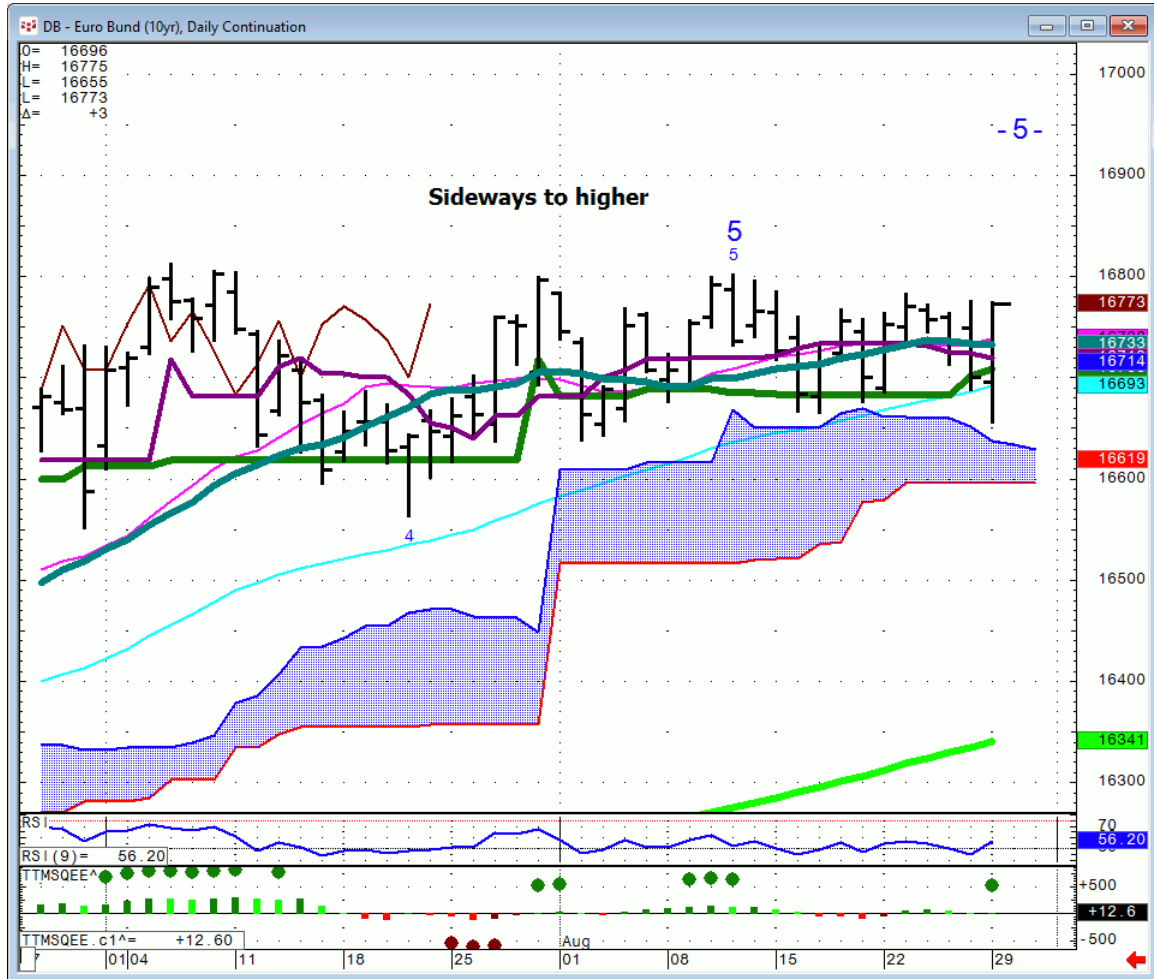
### 30 yr... ADC(Active daily continuation)



**30 yr. .. Daily Continuation** I prefer to stay with this chart until very close to expiration



# BUND



## FX

<b>FX</b>		<b>S1</b>	<b>Qtrly Pivot</b>	<b>R1</b>		
<b>Euro</b>		108.25	111	112.85		
<b>GBP/USD</b>			145.4	148.2		
<b>AUD/USD</b>	71.3	72.6	74	76.78	77.7	82.1
<b>NZD/USD</b>	63.1	67	70.6	73.9		
<b>USD/CAD</b>		133.85	128.5	123.15		
<b>CA6</b>		74.75	77.82	81.2		
<b>USD/JPY</b>		107.21	106.38	103	99	
<b>JY6</b>		93.35	9400	97.07	101.25	
<b>DXE</b>	88.07	92.9	96.5	100.2		

## *Commodities*

<b>Commodity</b>		<b>S1</b>	<b>Qtrly Pivot</b>	<b>R1</b>		
<b>OIL</b>	34.75	42.75	44.40-60	46.62	48.5	50.2
<b>Gold</b>		1175	1238	1307	1420	
<b>Copper</b>	1.9	2.125	2.21	2.33	2.77	
<b>Silver</b>			17.85	21.54	28.83	

## **General Comments or Valuable Insight**

**The Equity Indices are not ready to back off and shorting into month end is a trip to the torture chamber I can forgo.**

**Nasd 100...sustained and closing price action over 4811 will challenge the weekly sell signal similar to the March pattern. Check Friday's DMI.**

**I'll keep looking around for descent risk/reward setups, but there is nothing I'm gagging to add as a new position.**

**Bond charts...Futures are very different than ETF's as the Futures run the ETF's.**

**Using the correct chart during the qtrly roll will keep you out of trouble. I'm a bit old school liking to follow the current front month until it finally expires regardless the volume.**

**To each his own. Just know there are 3 distinct looks you can get pending the chart elected.**

**<http://www.whitewavetradingstrategies.com/glossary/>**

**WhiteWave Trading Strategies**  
**Independent Research from the Pros Pro**

**We Trade to Make Money**  
[www.whitewavetradingstrategies.com](http://www.whitewavetradingstrategies.com)  
[info@whitewavetradingstrategies.com](mailto:info@whitewavetradingstrategies.com)