



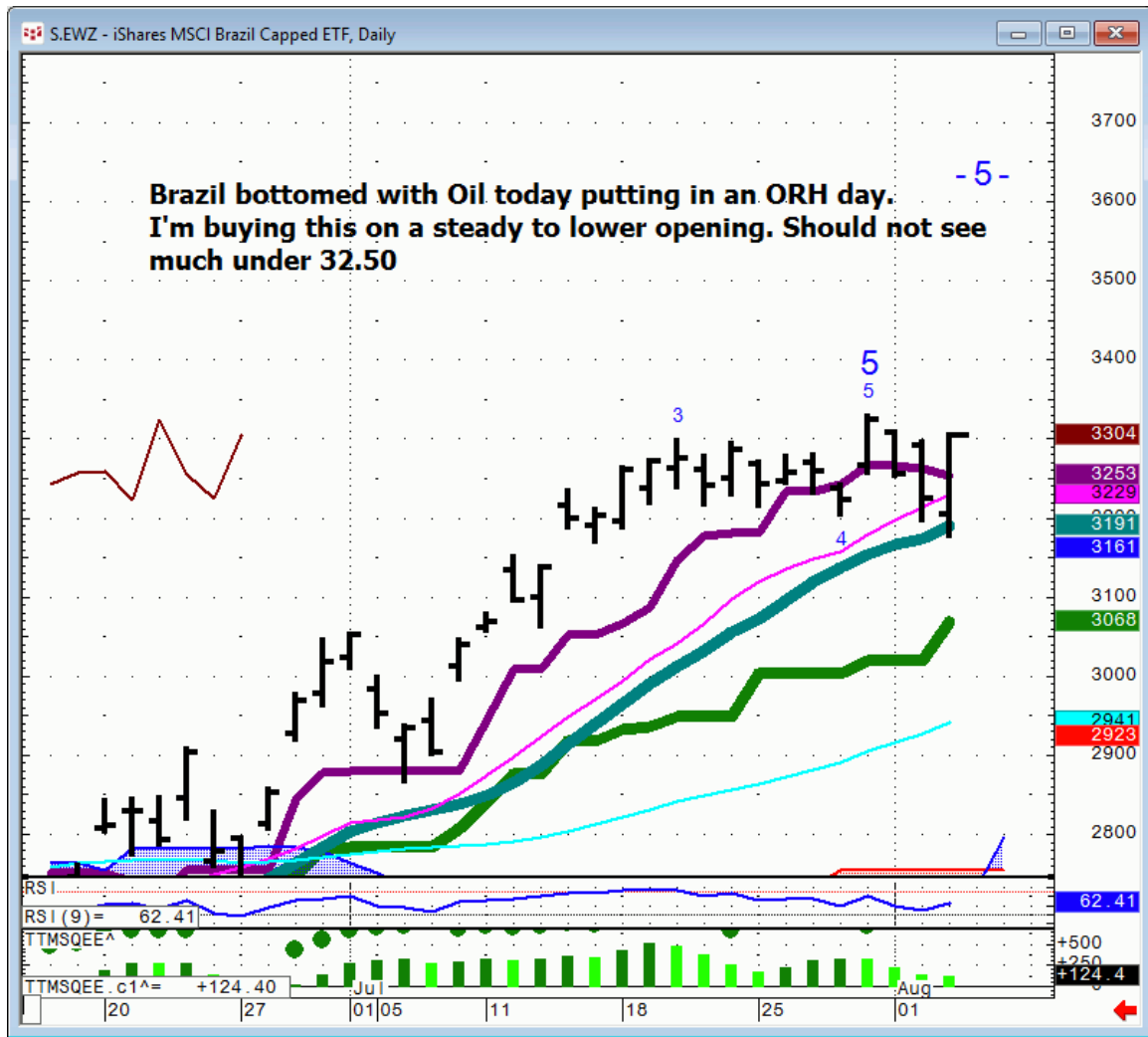
Daily Market Intelligence

A.M. LOOK

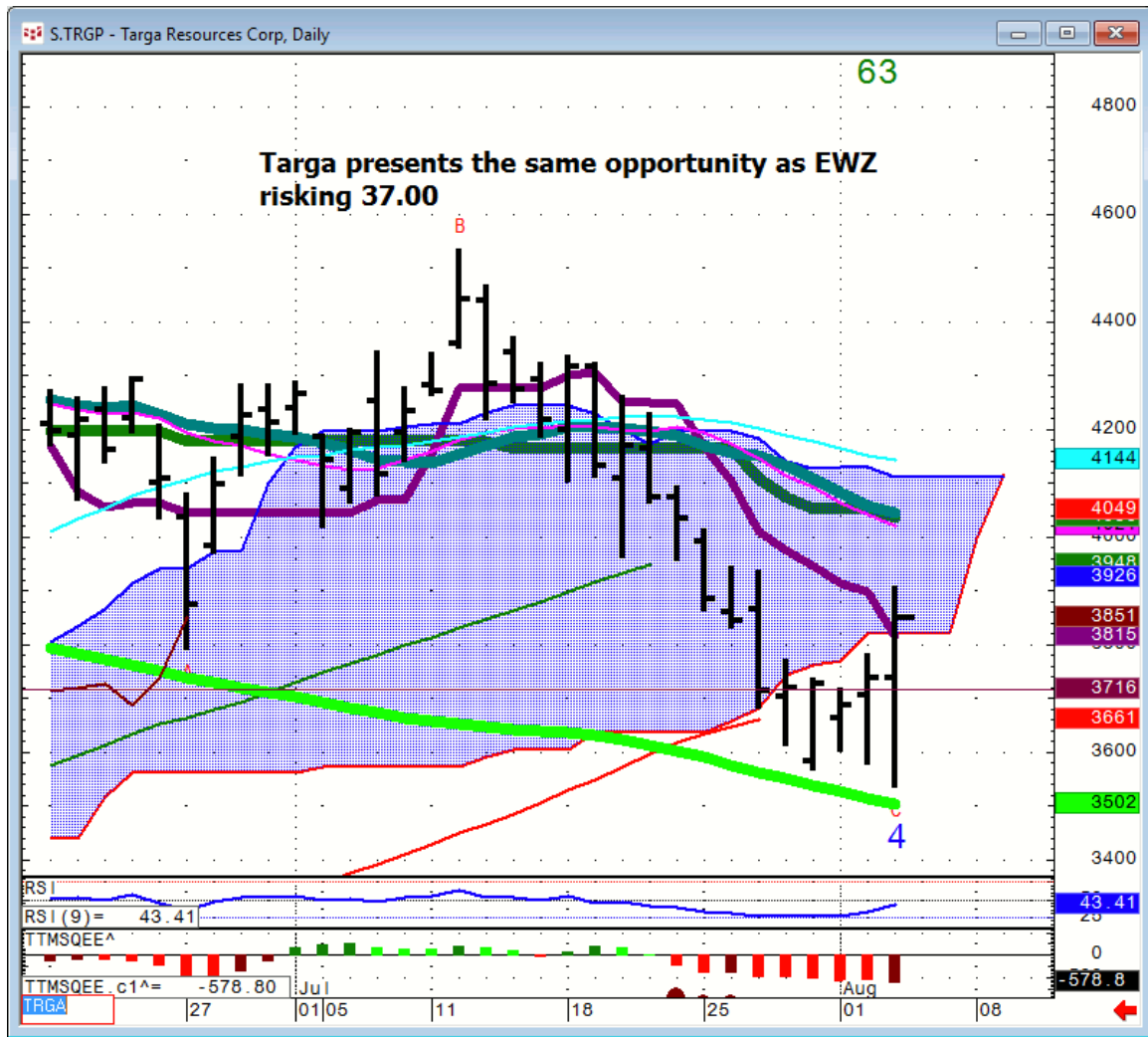
Stocks

Futures	S2	S1	Qtrly Pivot	R1		
Spu		1965	2039		2090	2123
Nasd 100	4103	4265	4402		4475	4575
DAX	8680	9340	10,000		10,650	
Nikkei		14,855	16,835		17,200	18,200
ASX			5075		5474	5900
FTSE			5990		6490	6751

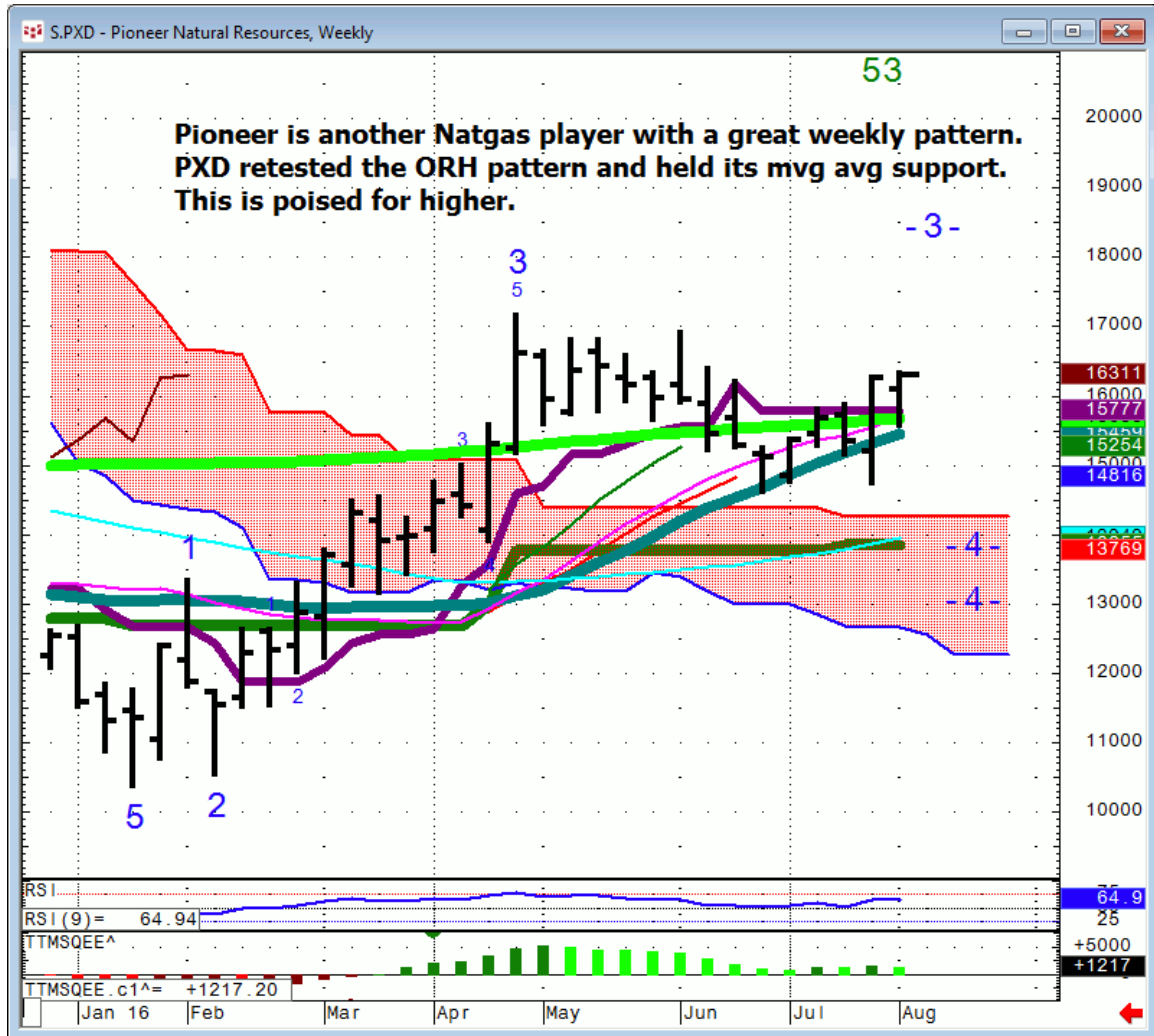
EWZ...



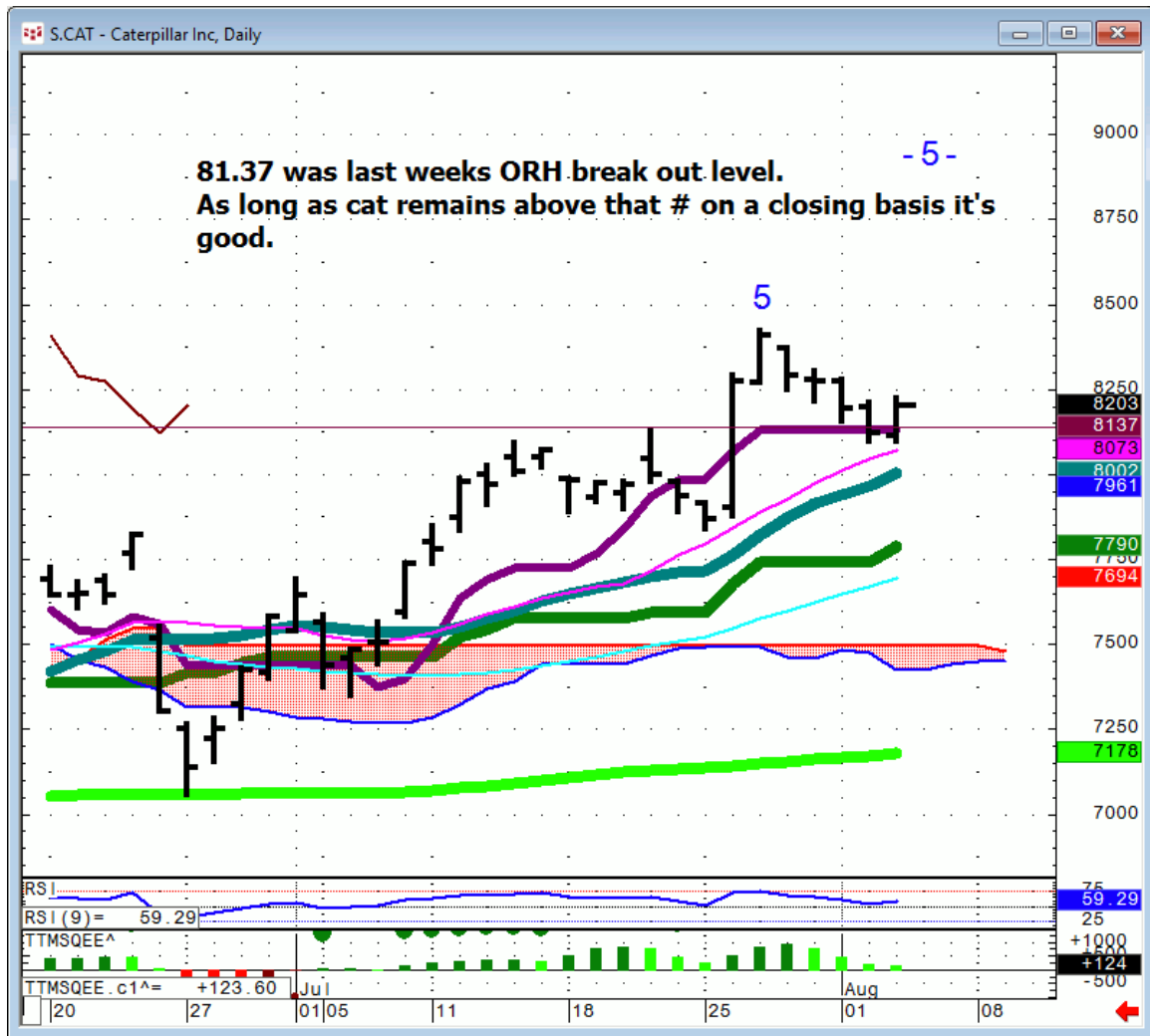
TRGP...



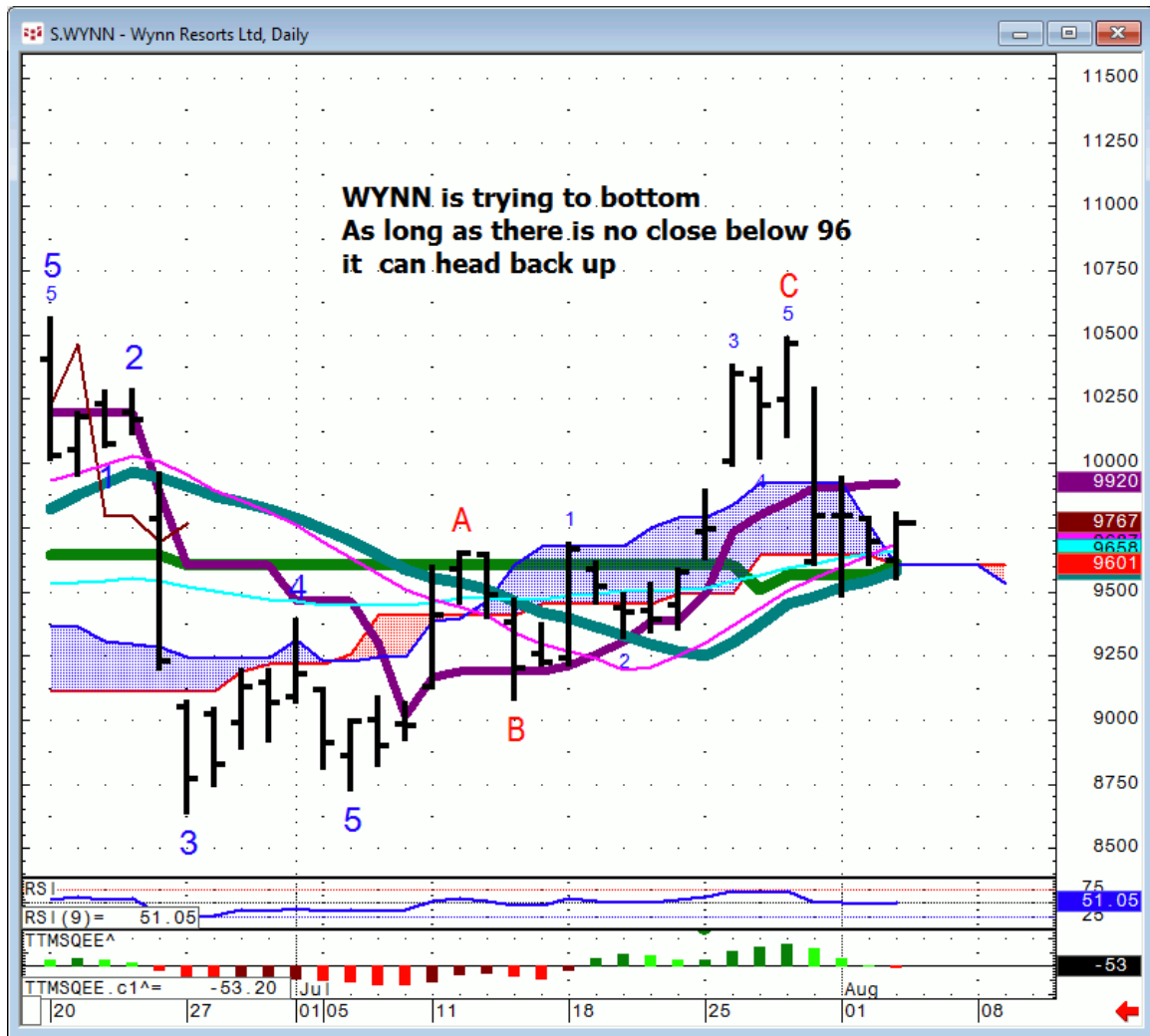
PXD...



CAT...



WYNN...



Bonds

Futures		S1	Qtrly Pivot	R1
30 Yr.	163	166.04	170.19	
Bund		159.07	165.3	

FX

FX	S1	Qtrly Pivot	R1		
Euro	108.25	111	112.85		
GBP/USD		145.4	148.2		
AUD/USD	71.3	72.6	74	76.78	77.7
NZD/USD	63.1	67	70.6	73.9	82.1
USD/CAD	133.85	128.5	123.15		
CA6	74.75	77.82	81.2		
USD/JPY	107.21	106.38	103	99	
JY6	93.35	9400	97.07	101.25	
DXE	88.07	92.9	96.5	100.2	

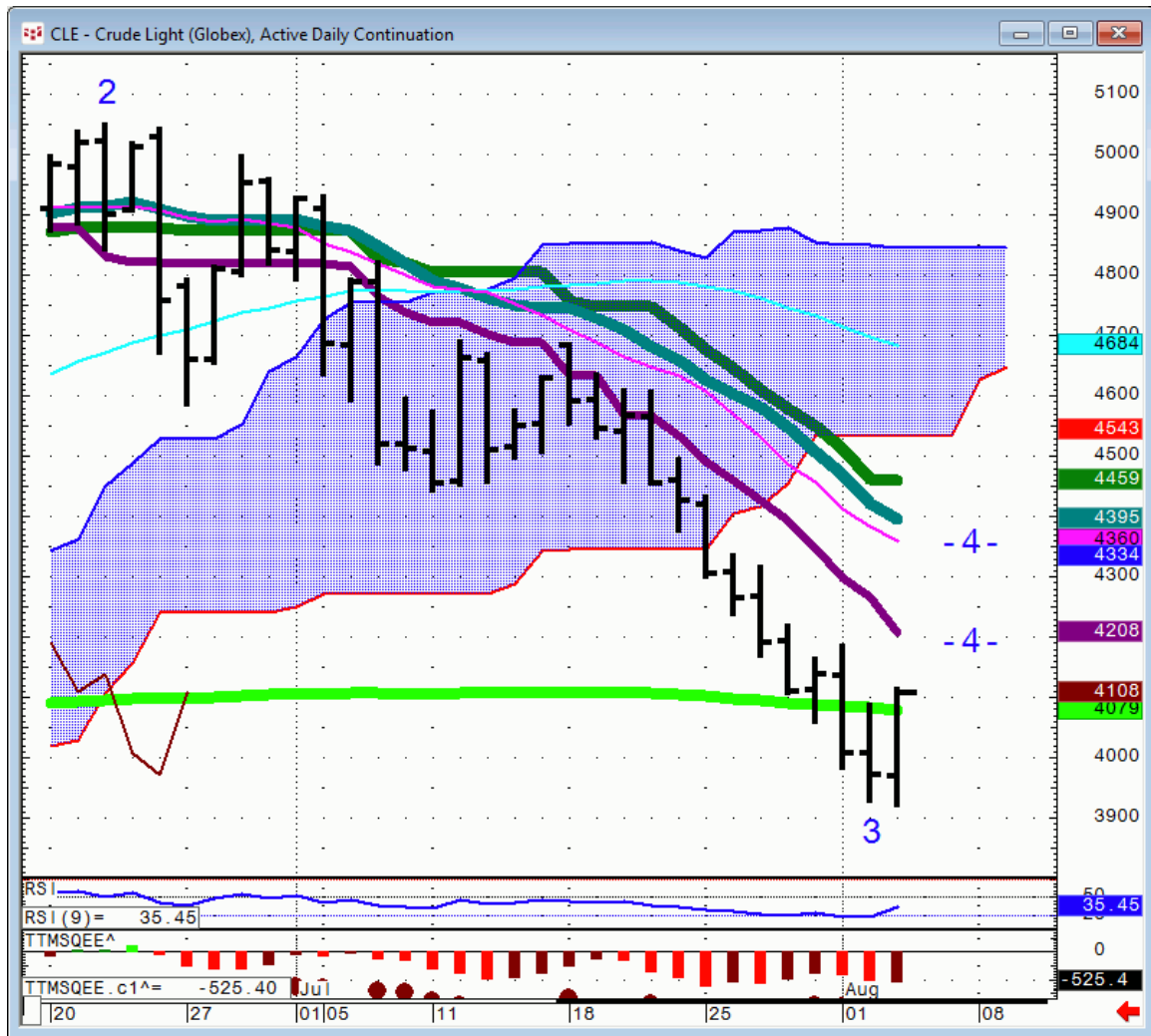
EUR/GBP... Pound looks like it can rally on the cross if not outright.



Commodities

Commodity		S1	Qtrly Pivot	R1		
OIL	34.75	42.75	44.40-60	46.62	48.5	50.2
Gold		1175	1238	1307	1420	
Copper	1.9	2.125	2.21	2.33	2.77	
Silver			17.85	21.54	28.83	

Oil...



General Comments or Valuable Insight

Spu's...I put a close below 2152 on Friday as a low probability event.

I do not believe with all the money awash in the world that we'll see that ORL weekly chart pattern.

Oil, Natty and Biotech ran the board today.

These sectors should be able to keep the Spu's from breaking down this week.

Bonds aren't worth looking at until Friday.

<http://www.whitewavetradingstrategies.com/glossary/>

WhiteWave Trading Strategies
Independent Research from the Pros Pro

We Trade to Make Money
www.whitewavetradingstrategies.com
info@whitewavetradingstrategies.com