



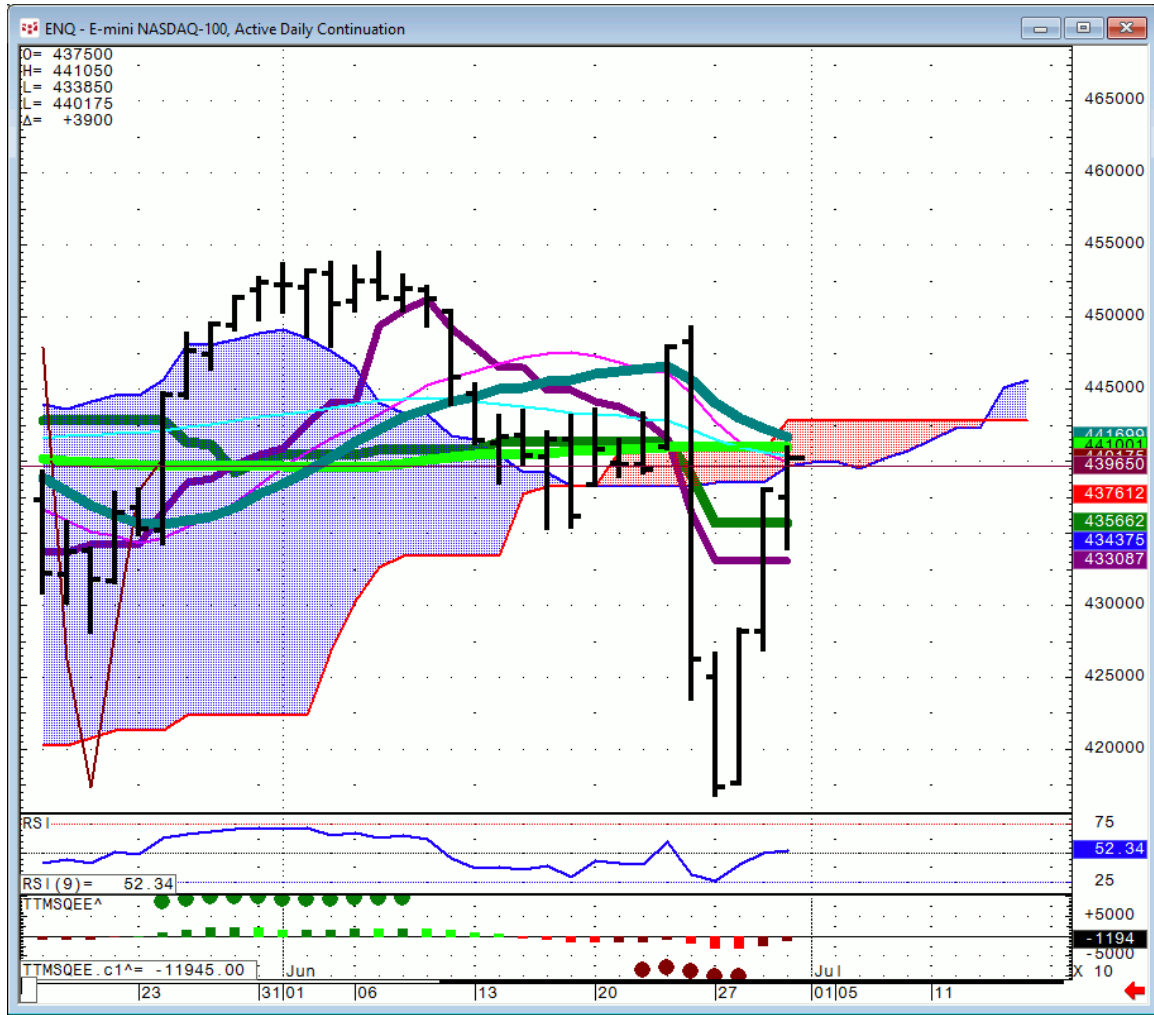
## Daily Market Intelligence

### A.M. LOOK

#### *Stocks*

<b>Futures</b>	<b>S2</b>	<b>S1</b>	<b>Qtrly Pivot</b>	<b>R1</b>		
<b>Spu</b>		1965	2039		2090	2123
<b>Nasd 100</b>	4103	4265	4402		4475	4575
<b>DAX</b>	8680	9340	10,000		10,650	
<b>Nikkei</b>		14,855	16,835		17,200	18,200
<b>ASX</b>			5075			

# Nasd 100...



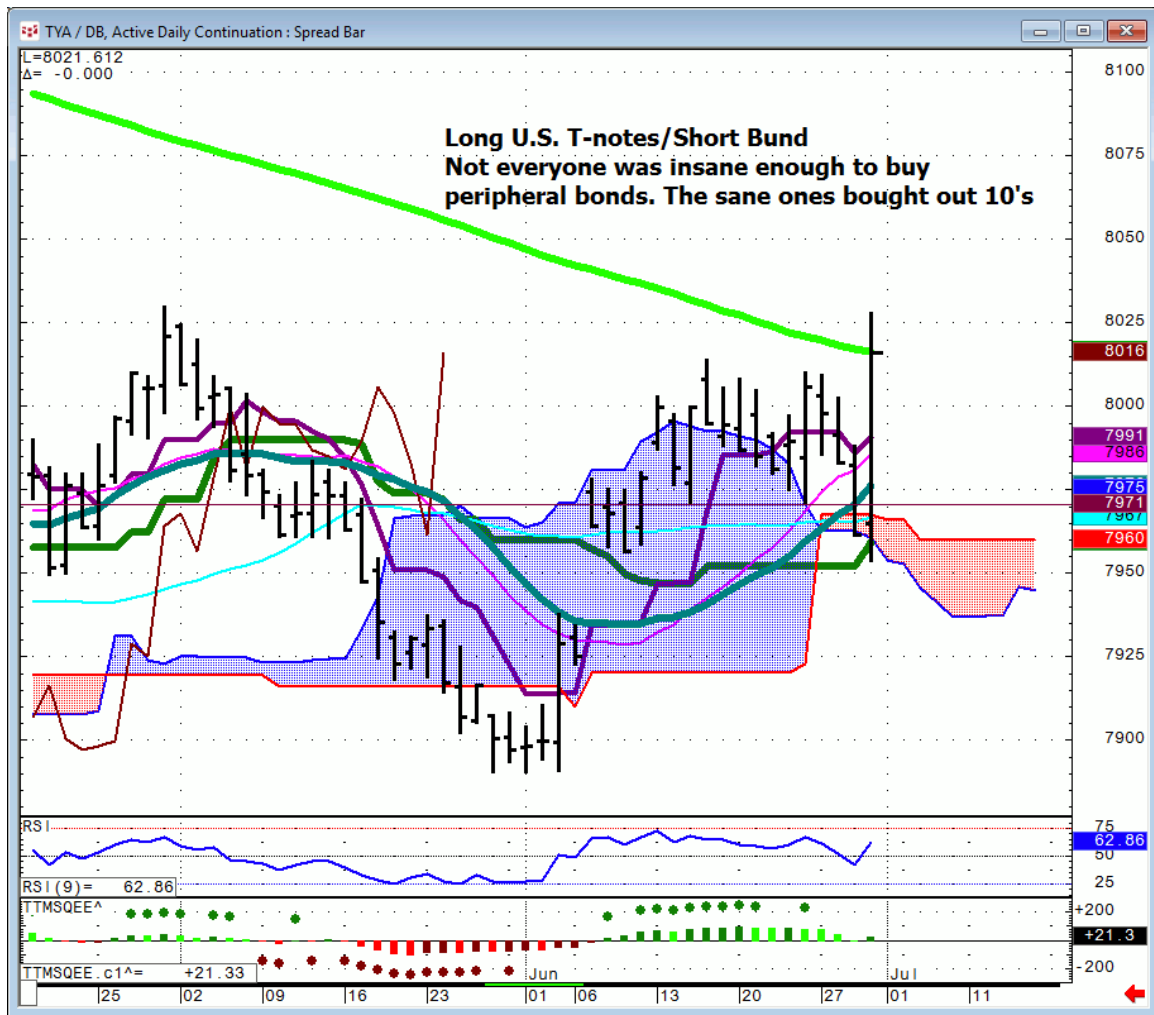
# IBB...



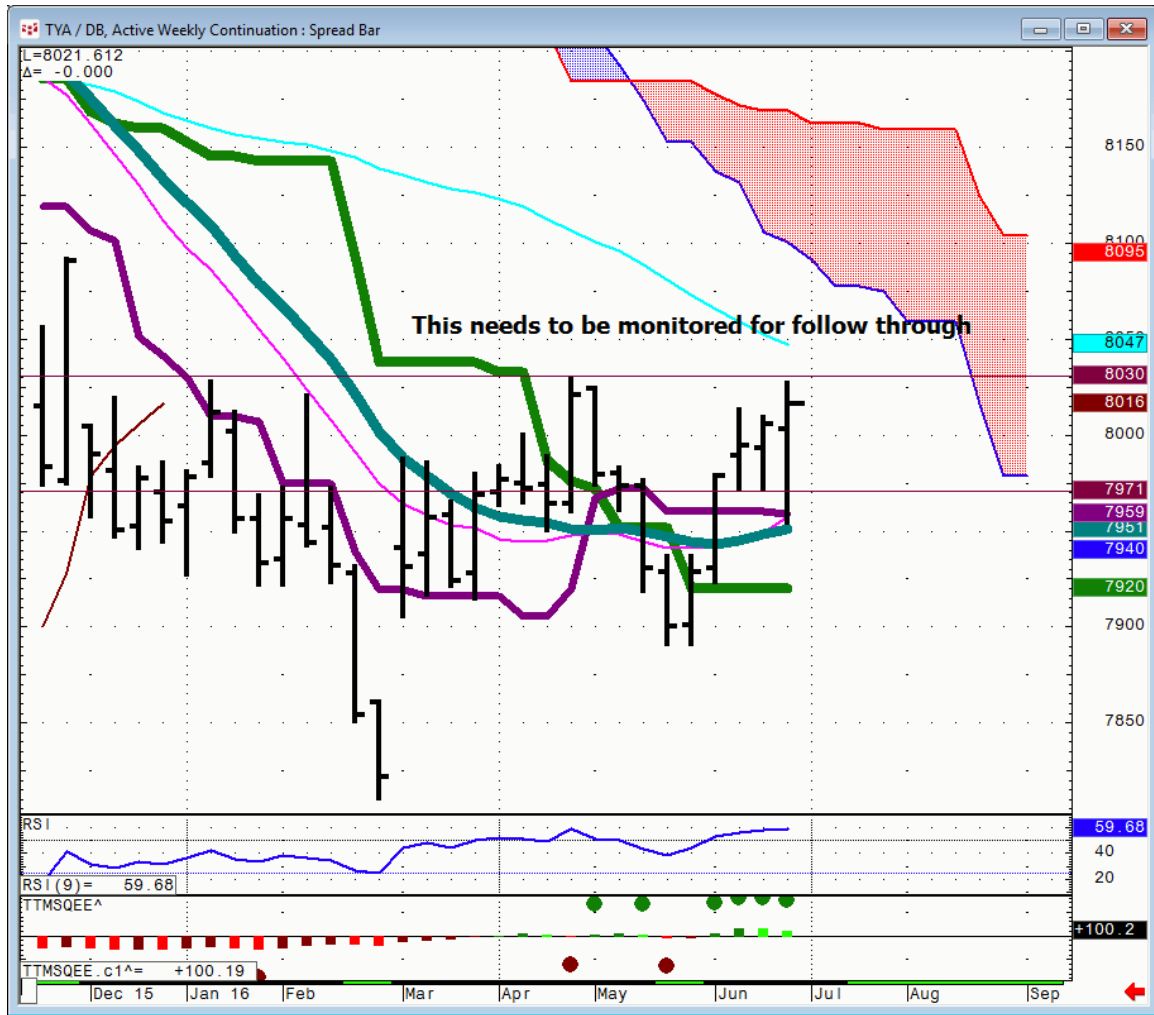
## Bonds

Futures	S1	Qtrly Pivot	R1	
30 Yr.	159.3	163	166.04	170.19
Bund	159.07	165.3		

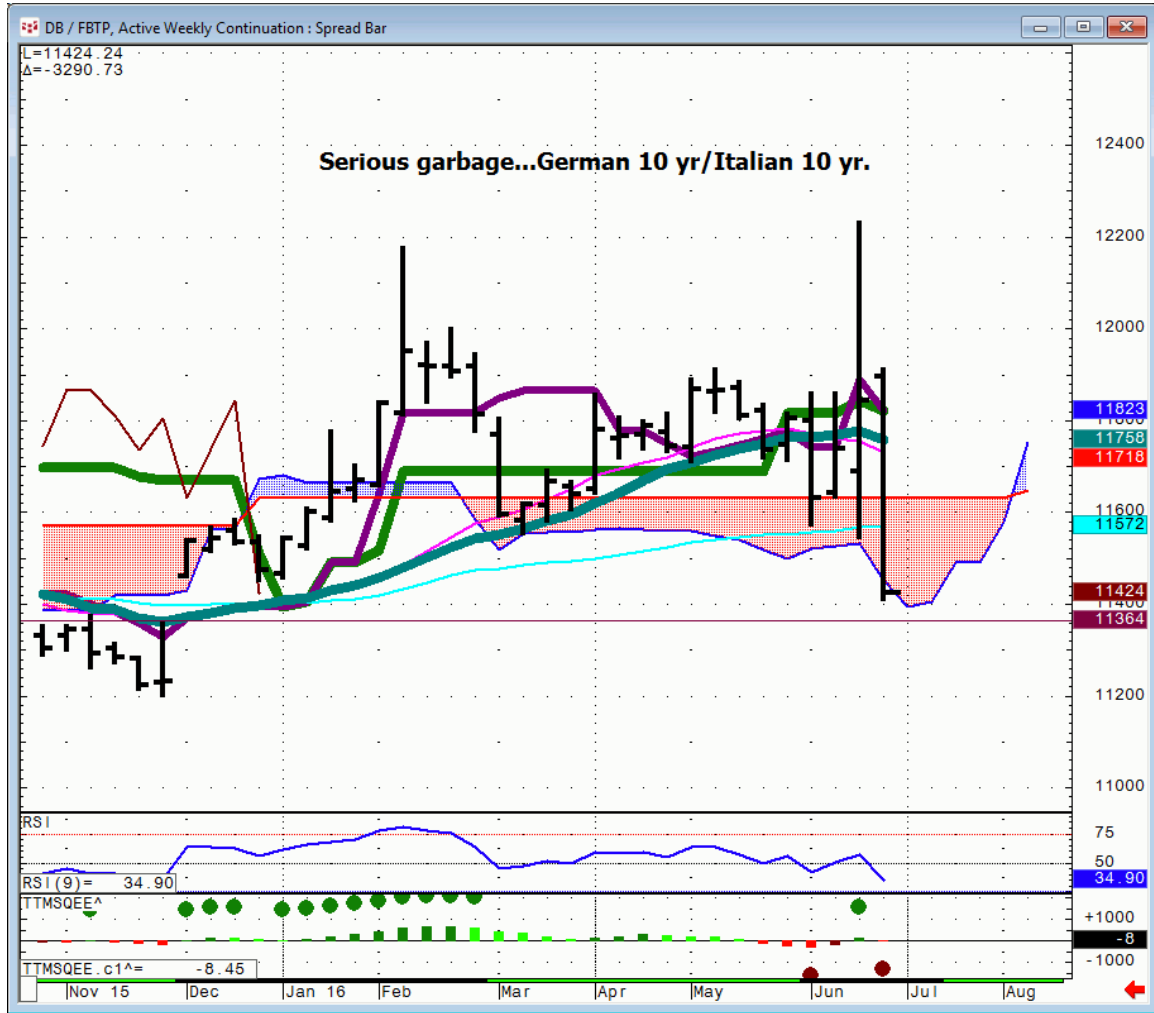
## U.S. Ten yr. Notes/ Short Bund...TYUA/DBU



# TY/DB...weekly



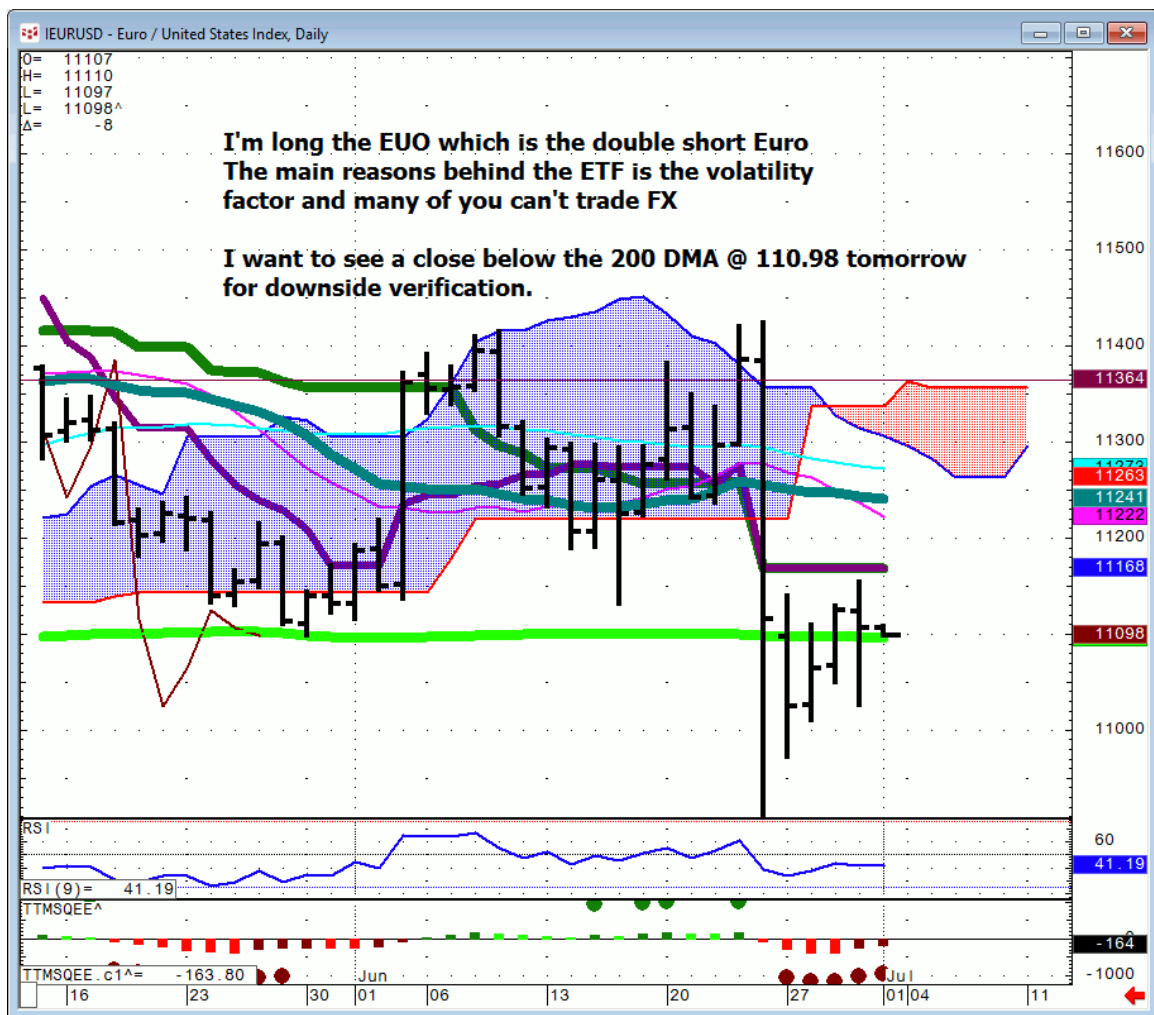
# Bund/Italian 10's



# FX

FX	S1	Qtrly Pivot	R1		
<b>Euro</b>	108.25	111	112.85		
<b>GBP/USD</b>		145.4	148.2		
<b>AUD/USD</b>	71.3	72.6	75	76.78	77.7
<b>NZD/USD</b>		63.1	67	69.30-50	73.9
<b>USD/CAD</b>	133.85	128.5	123.15		
<b>CA6</b>	74.75	77.82	81.2		
<b>USD/JPY</b>	107.21	106.38	103	99	94.88
<b>JY6</b>	93.35	9400	97.07	101.24	105.40
<b>DXE</b>	88.07	92.9	96.5	100.2	

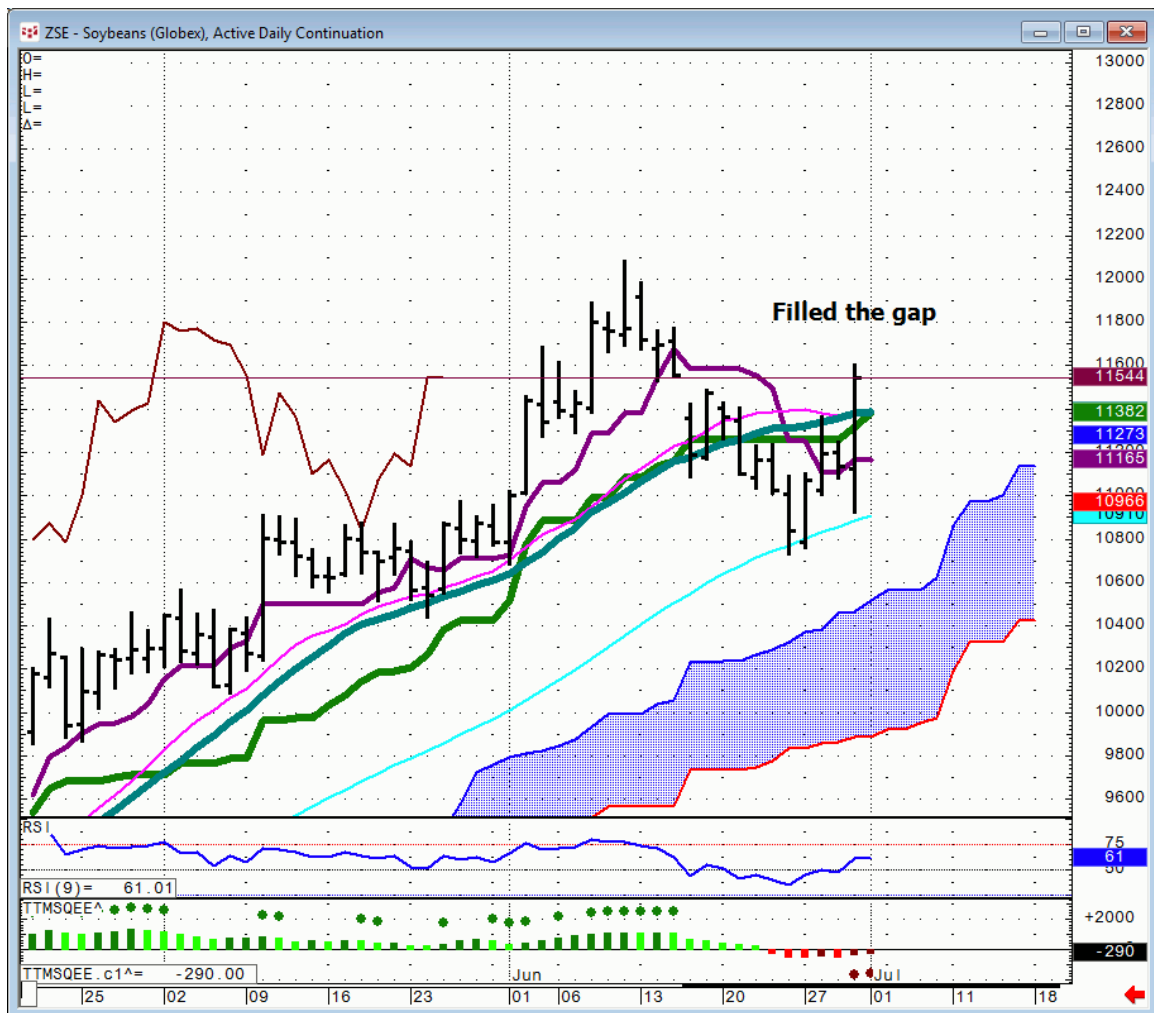
# Euro



## Commodities

Commodity	S1	Qtrly Pivot	R1		
OIL	34	40.4	46.62	48.5	56.33
Gold	1175	1238	1307		
Copper	1.9	2.125	2.21	2.33	2.77

## Soybeans..



# Soybeans monthly



## **General Comments or Valuable Insight**

**I've seen enough today with all the manipulations from the BOE & Draghi.**

**It begets the question " Who's on First?"**

**Keep it simple tonight into tomorrow. Just ask yourself "is it higher or lower from today's close?"**

**Use the Month end-qtrly closes as your near term pivots in everything.**

**I'll write a few comments in the early A.M. and then will be out the door.**

**There won't be a lot of players after 10 A.M. CDT, it'll be just you and the bots!**

**<http://www.whitewavetradingstrategies.com/glossary/>**

**WhiteWave Trading Strategies**  
**Independent Research from the Pros Pro**

**We Trade to Make Money**  
[www.whitewavetradingstrategies.com](http://www.whitewavetradingstrategies.com)  
[info@whitewavetradingstrategies.com](mailto:info@whitewavetradingstrategies.com)