



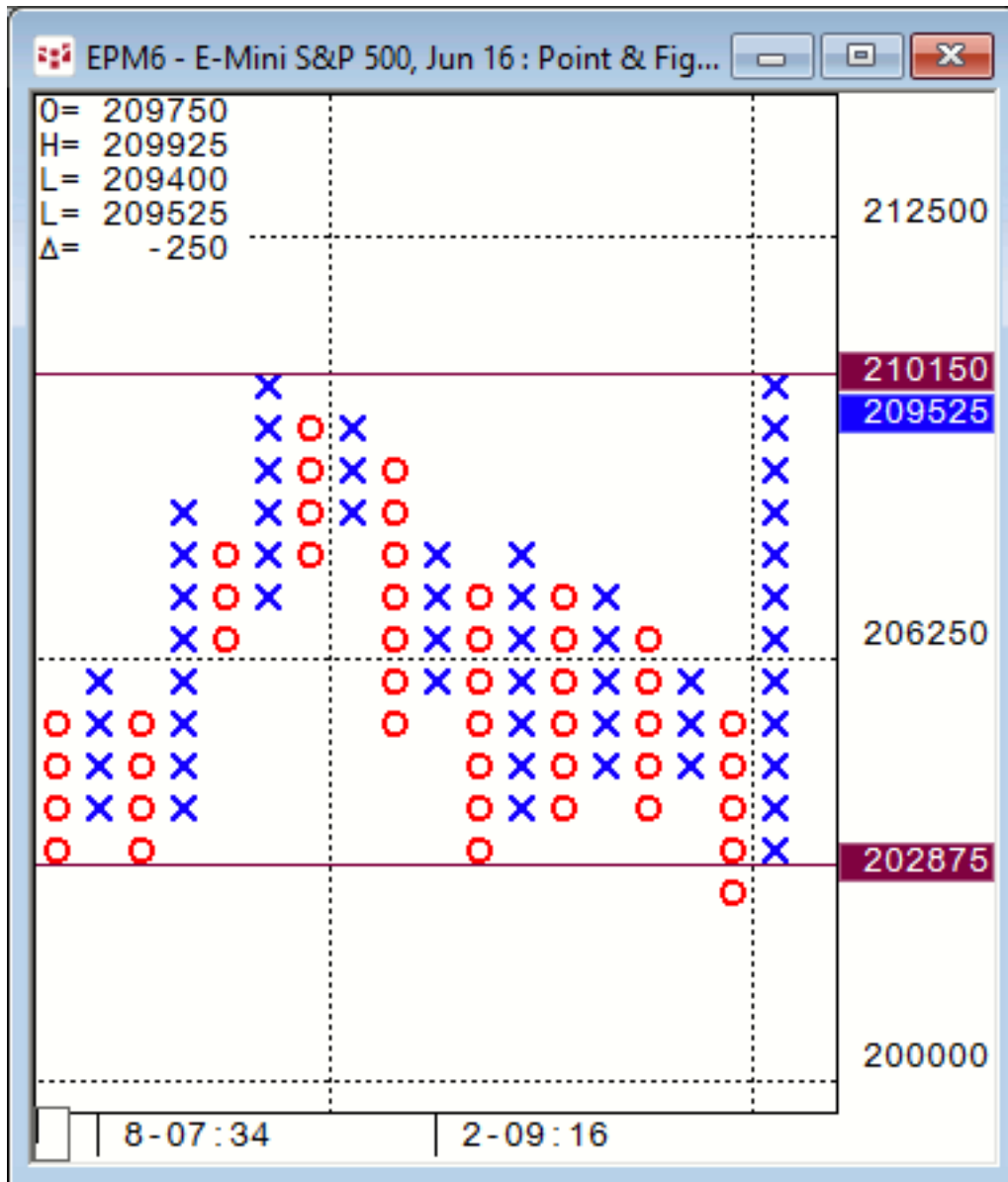
## Daily Market Intelligence

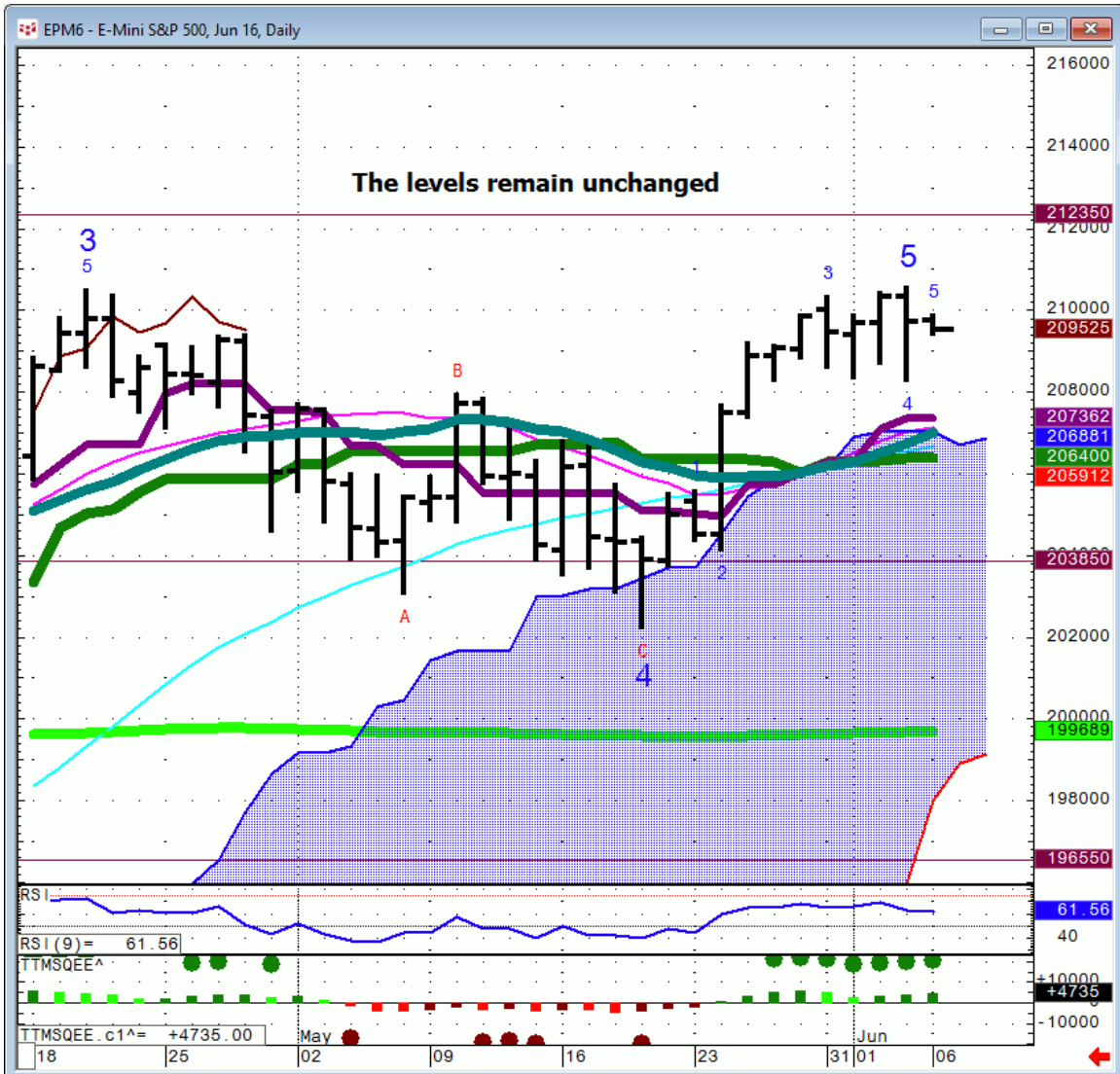
### A.M. LOOK

#### *Stocks*

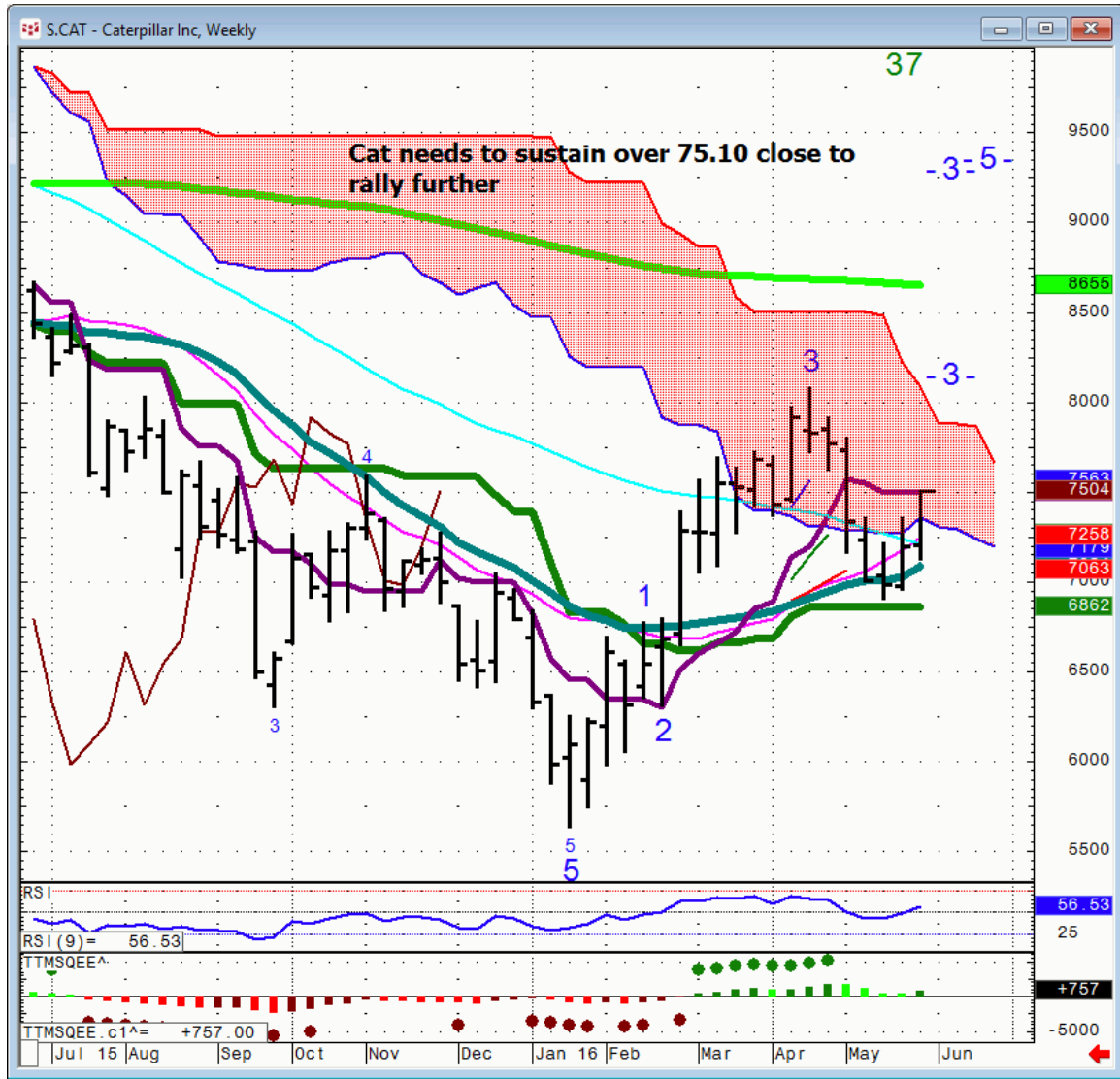
<b>Futures</b>	<b>S1</b>	<b>Qtrly Pivot</b>	<b>R1</b>	
<b>Spu</b>	1965	2039	2090	2123
<b>Nasd</b>				
<b>100</b>	4265	4402	4475	4575
<b>DAX</b>	9340	10,000	10,650	
<b>Nikkei</b>	14,855	16,835	17,200	18,200

**Spu...**there is no change on the P&F charts and no change in the levels.





# CAT



## **Bonds**

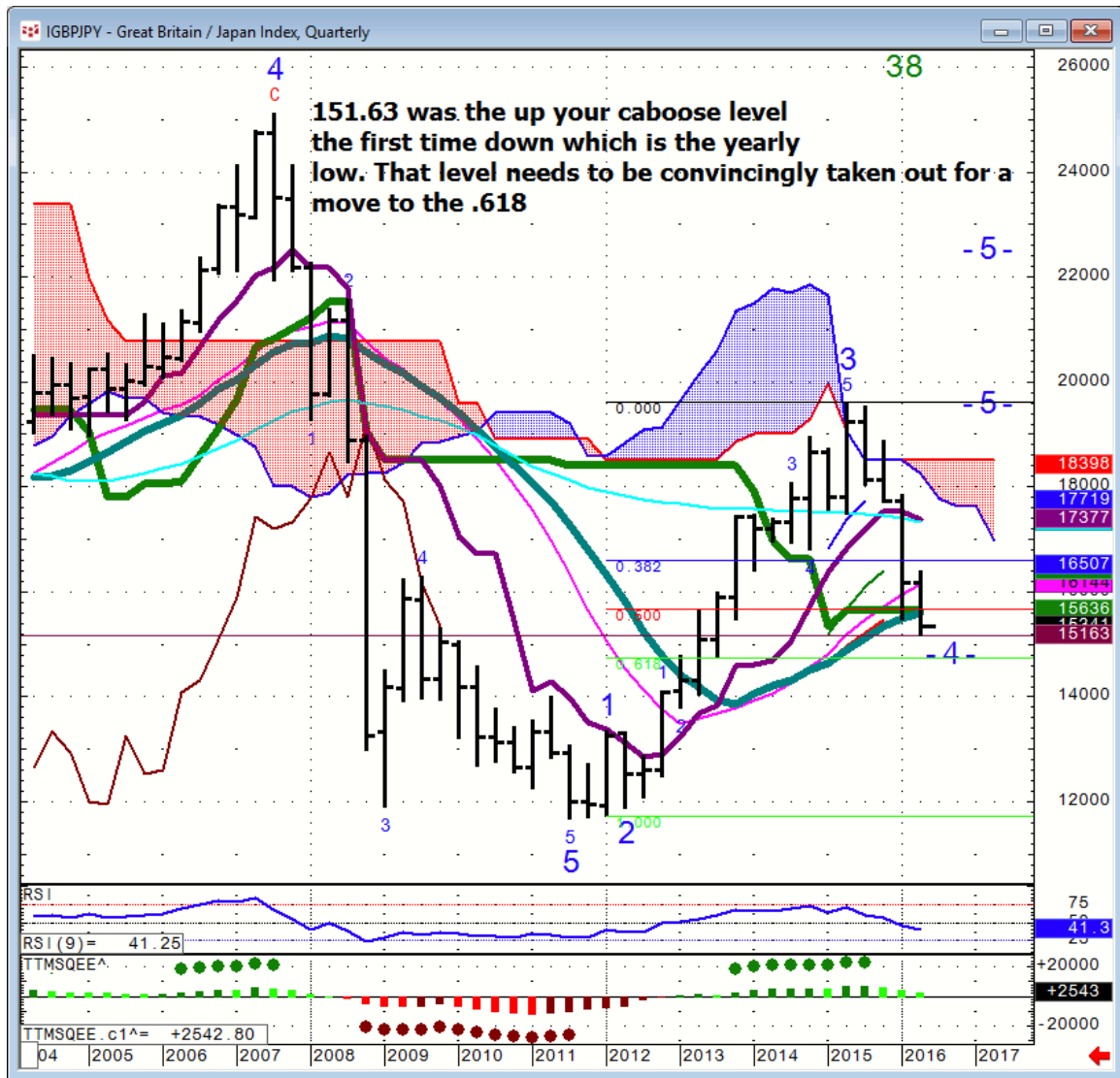
<b>Futures</b>	<b>S1</b>	<b>Qtrly Pivot</b>	<b>R1</b>	
30 Yr.	159.3	163	166.04	170
Bund	159.07	163.4	165.2	

**30 yr. ..** I want to see how the Bunds trade into the A.M. and the U.S. Indices before I'd commit to anything

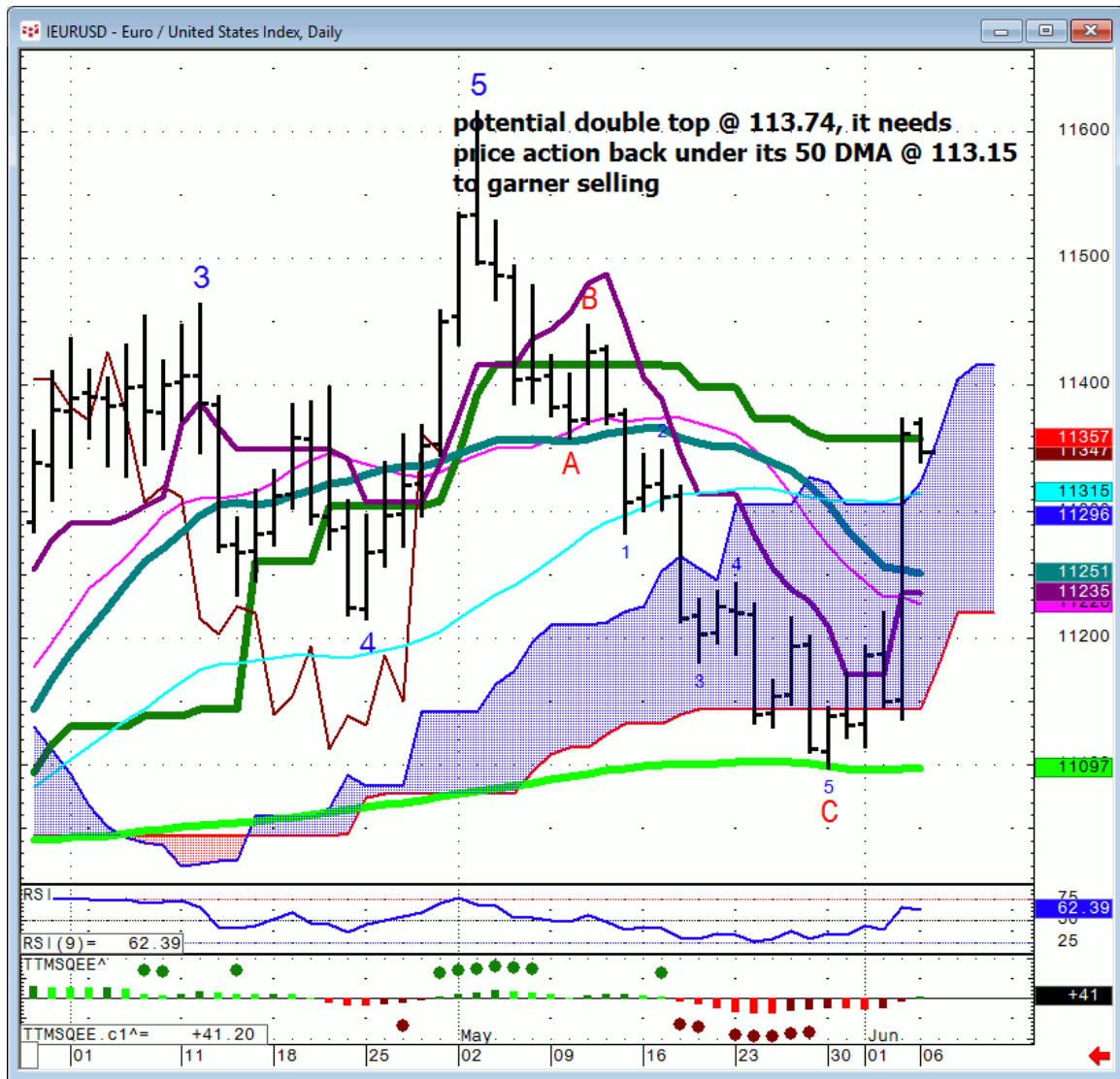
# FX

FX	S1	Qtrly Pivot	R1		
<b>Euro</b>	108.25	111		124.23	
<b>GBP/USD</b>		145.4	148.2		
<b>AUD/USD</b>	72.6	75	76.78	77.7	82.1
<b>NZD/USD</b>		67	69.30-50	73.9	
<b>USD/CAD</b>		133.85		127.7	123.15
<b>CA6</b>		74.75	77.1	78.3	81.2
<b>USD/JPY</b>		113.85	110.64	107.21	103
<b>JY6</b>		88	90.38	93.35	97.07
<b>DXE</b>	88.07	92.9	96.5	100.2	

## GBP/JPY...



# Euro..



# USD/JPY

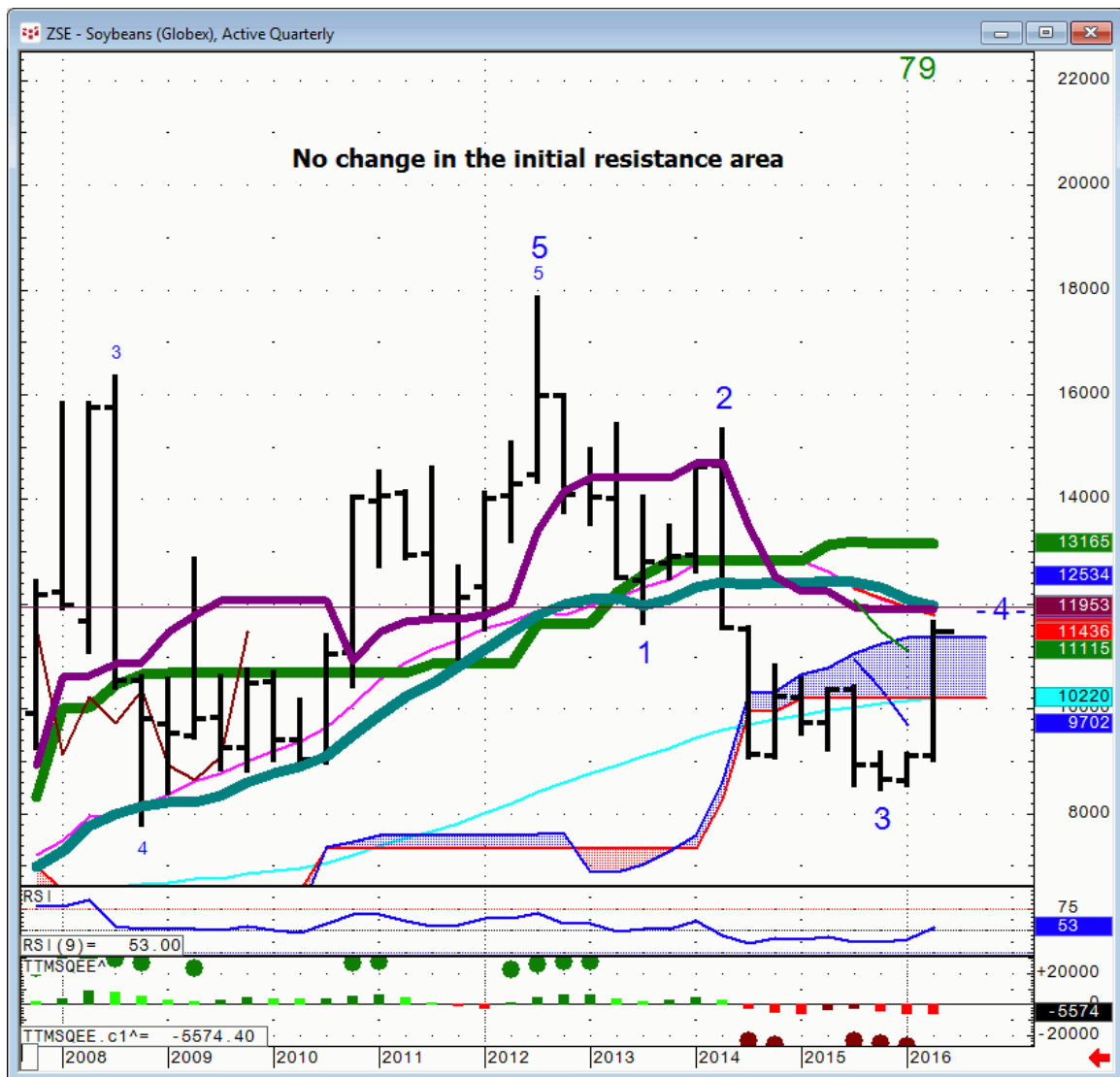




## Commodities

Commodity	S1	Qtrly Pivot	R1		
OIL	34	40.4	46.62	48.5	50.44
Gold	1175	1238	1307		
Copper	2.125	2.21	2.33	2.77	

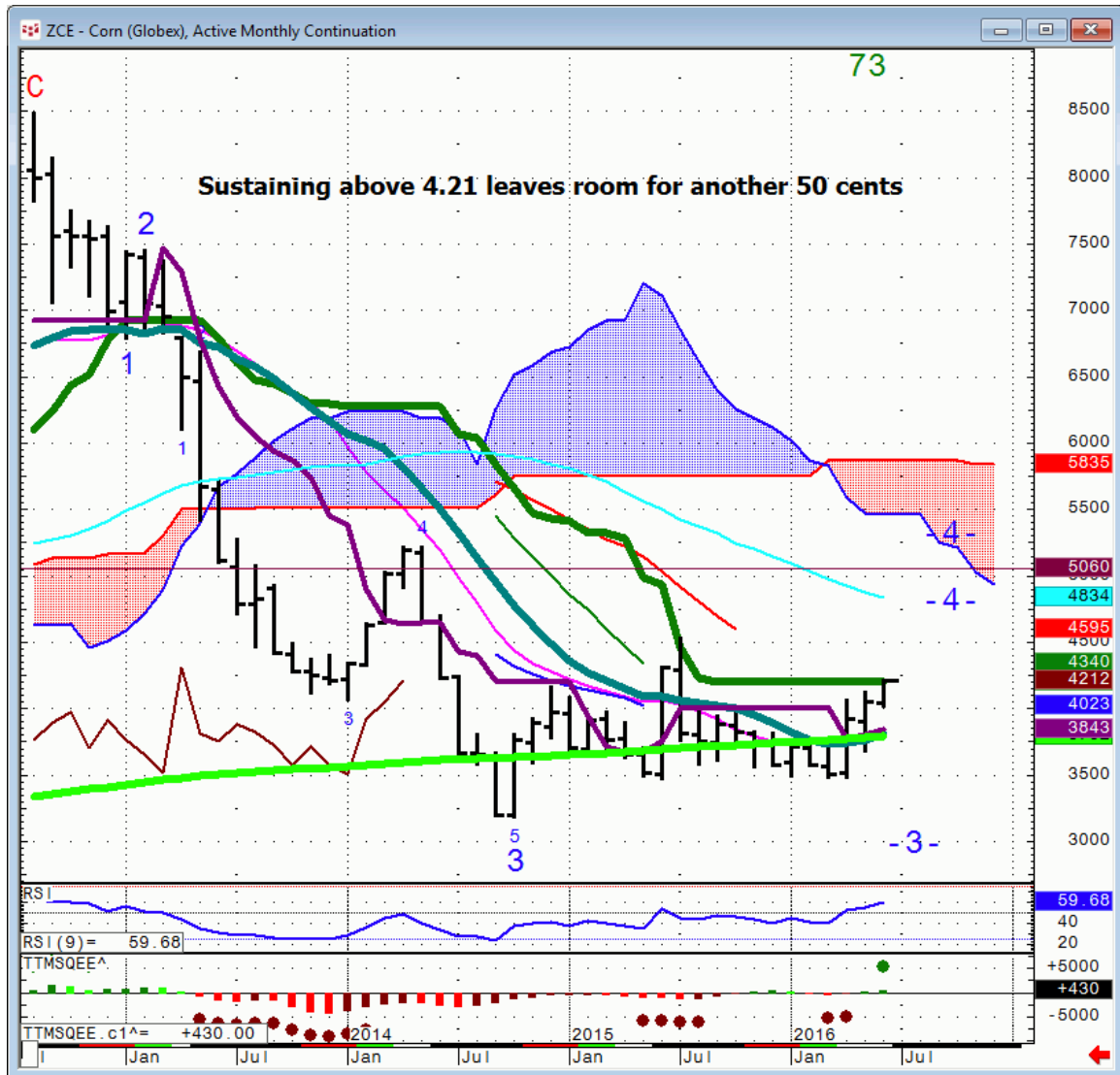
## Soybeans...



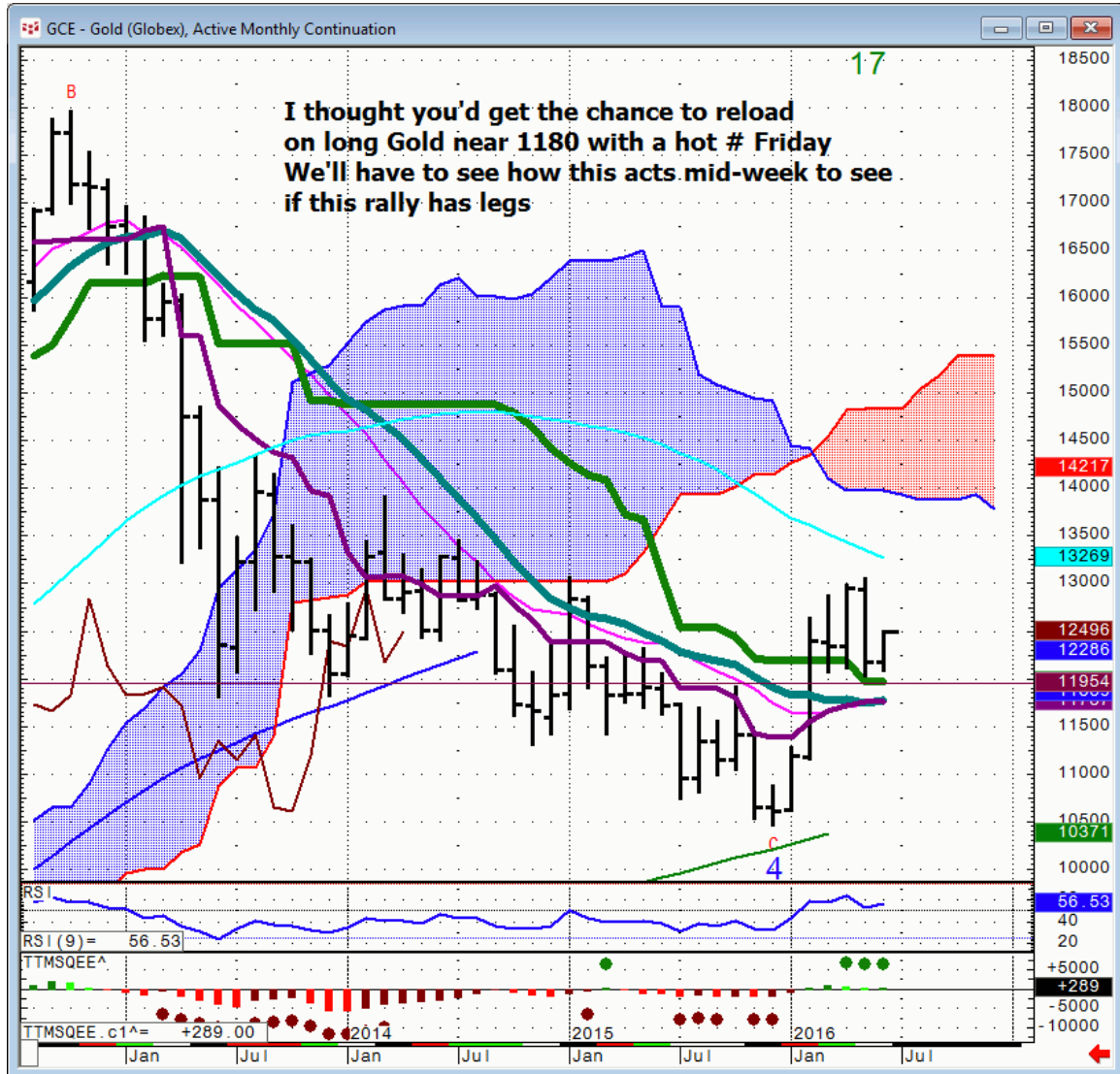
# Wheat..



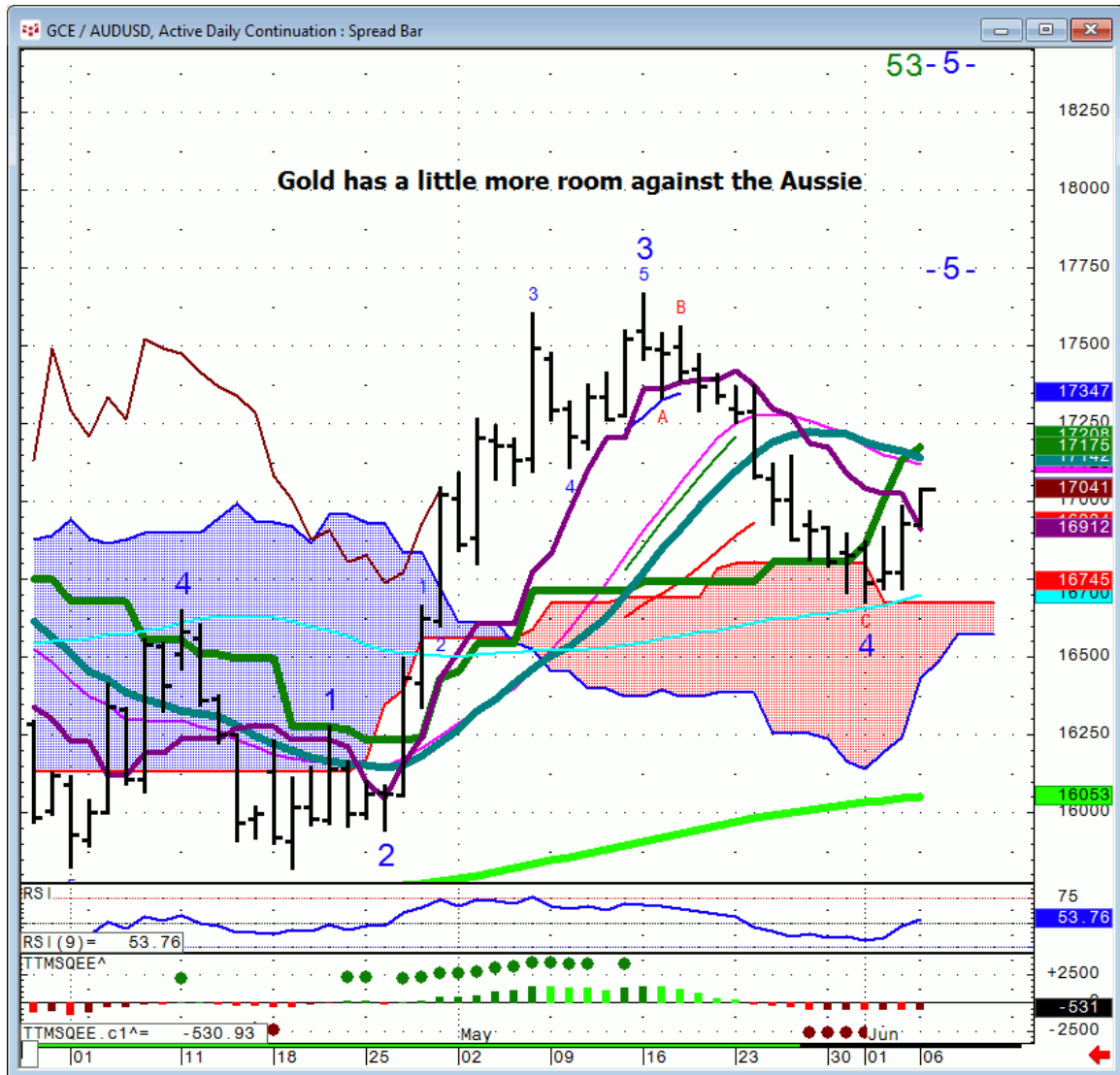
# Corn



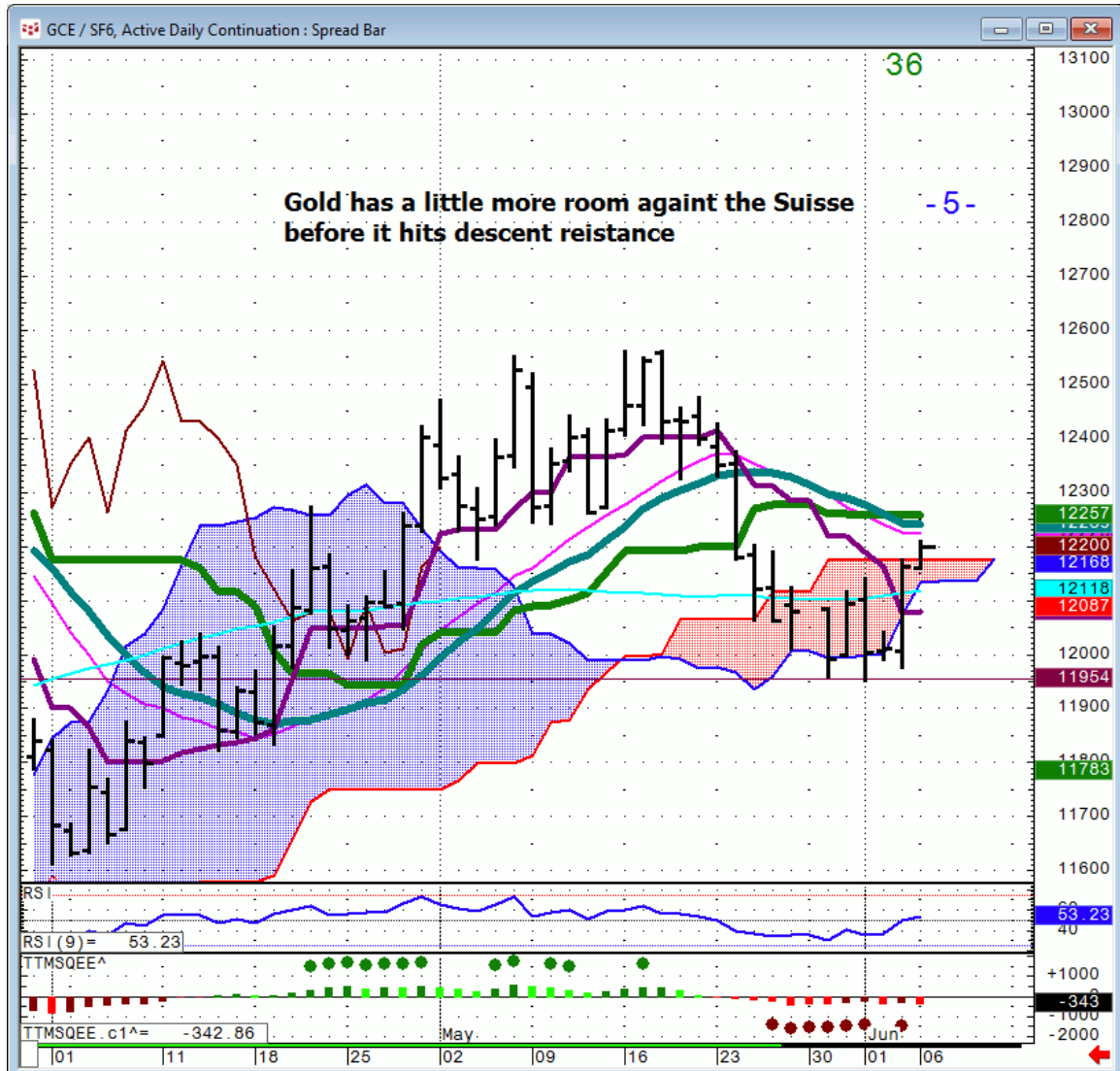
# GOLD...



# Gold/Audusd



# Gold/Swiss Franc



## General Comments or Valuable Insight

Friday was a shocker with the Jobs report.

I want to see just how much of an over reaction the Financials and the currencies had.

I'm pretty much in a wait and see mode into tomorrow's U.S. opening.

I was looking for Euro strength to happen Thursday.

Time to let the board gestate.

The grains are the best game in town with weather effecting both coasts and the south.

We'll be adding Freon to our A.C. units for mid week heat in the Mi-West.

Pigs hate heat, so we'll keep an eye on the meats this week as well.

## **WhiteWave Trading Strategies** **Independent Research from the Pros Pro**

**We Trade to Make Money**

[www.whitewavetradingstrategies.com](http://www.whitewavetradingstrategies.com)

[info@whitewavetradingstrategies.com](mailto:info@whitewavetradingstrategies.com)