



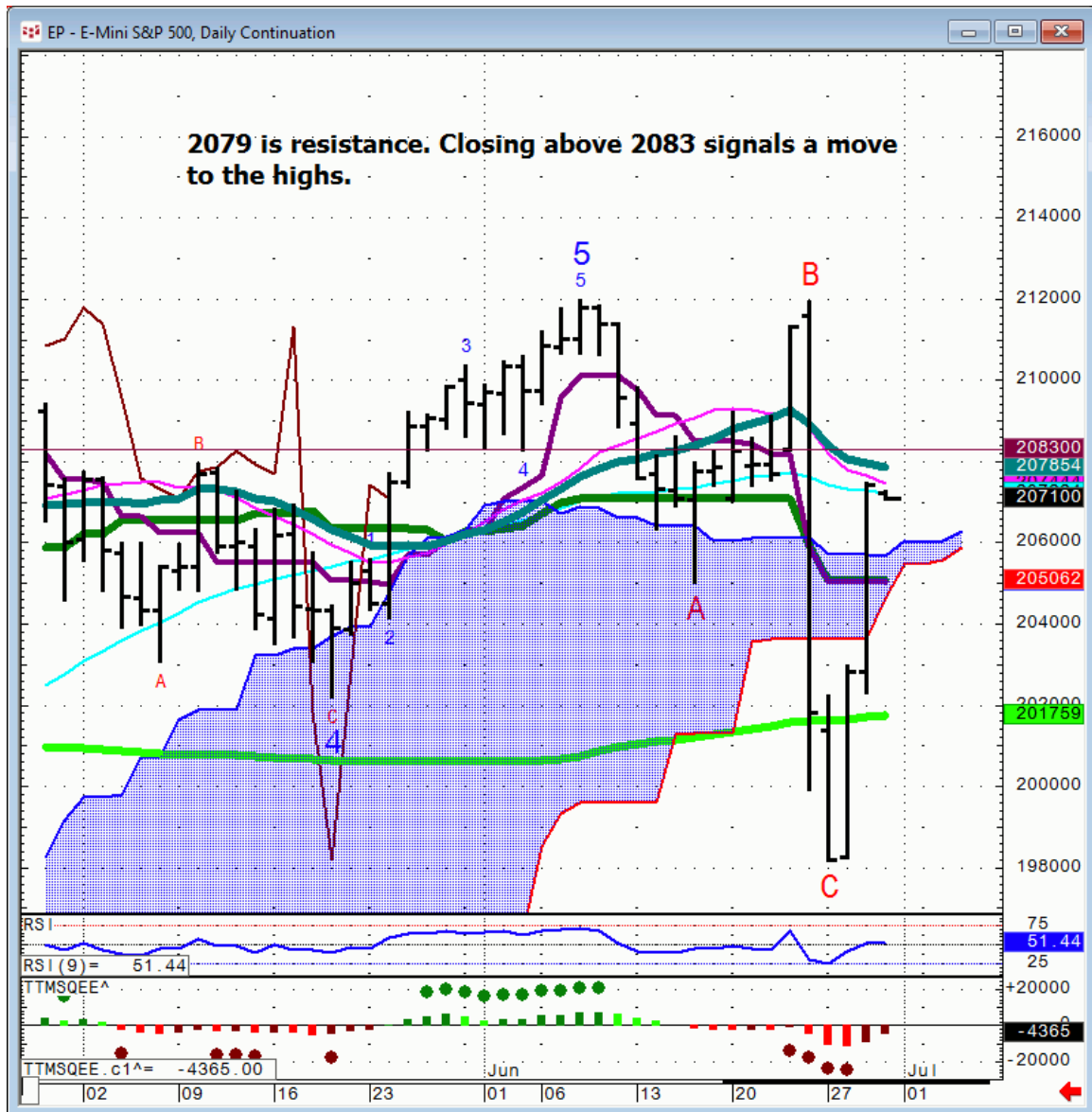
## Daily Market Intelligence

### A.M. LOOK

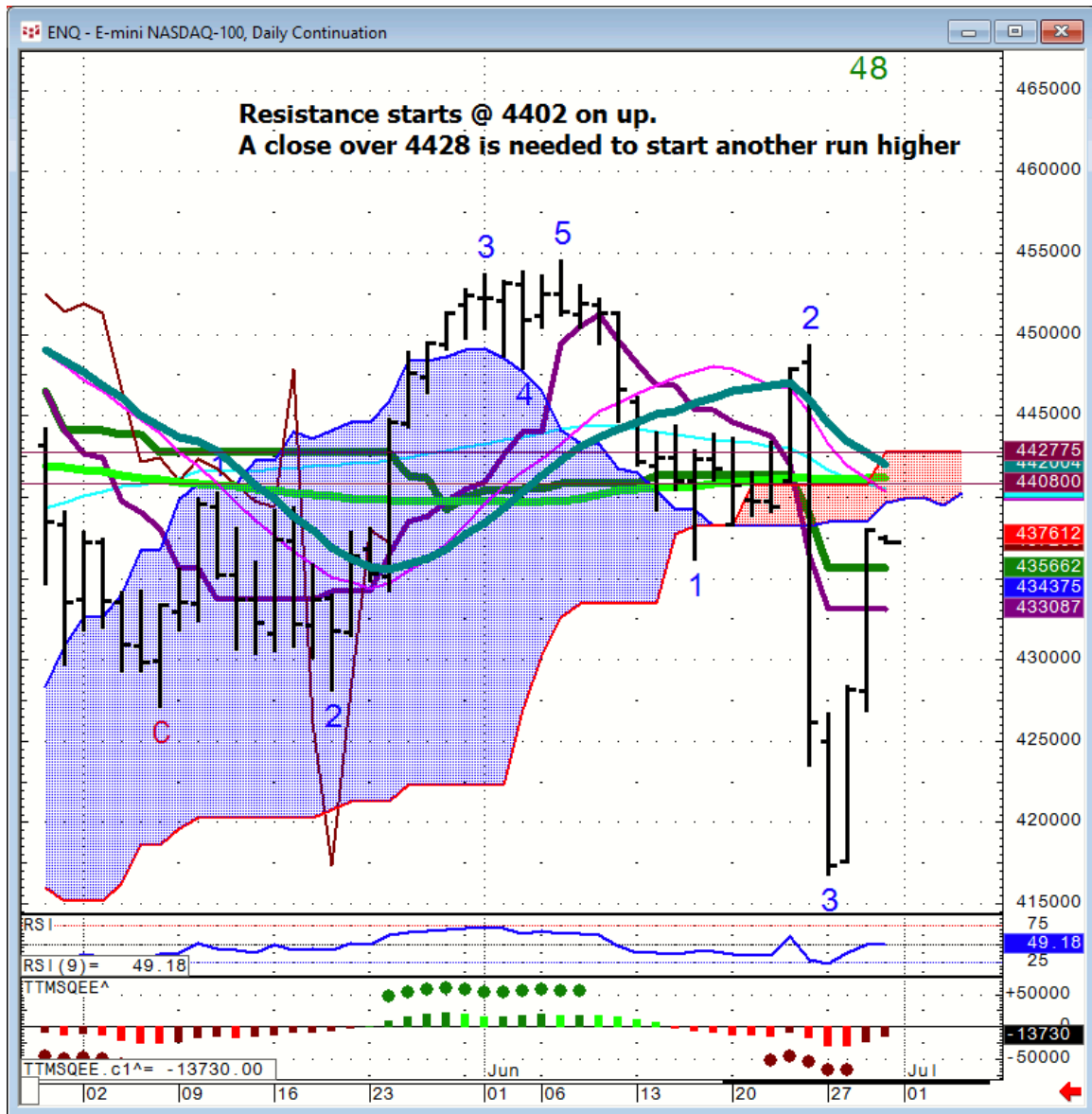
#### *Stocks*

<b>Futures</b>	<b>S2</b>	<b>S1</b>	<b>Qtrly Pivot</b>	<b>R1</b>		
<b>Spu</b>		1965	2039		2090	2123
<b>Nasd 100</b>	4103	4265	4402		4475	4575
<b>DAX</b>	8680	9340	10,000		10,650	
<b>Nikkei</b>		14,855	16,835		17,200	18,200
<b>ASX</b>			5075			

# Spu's...



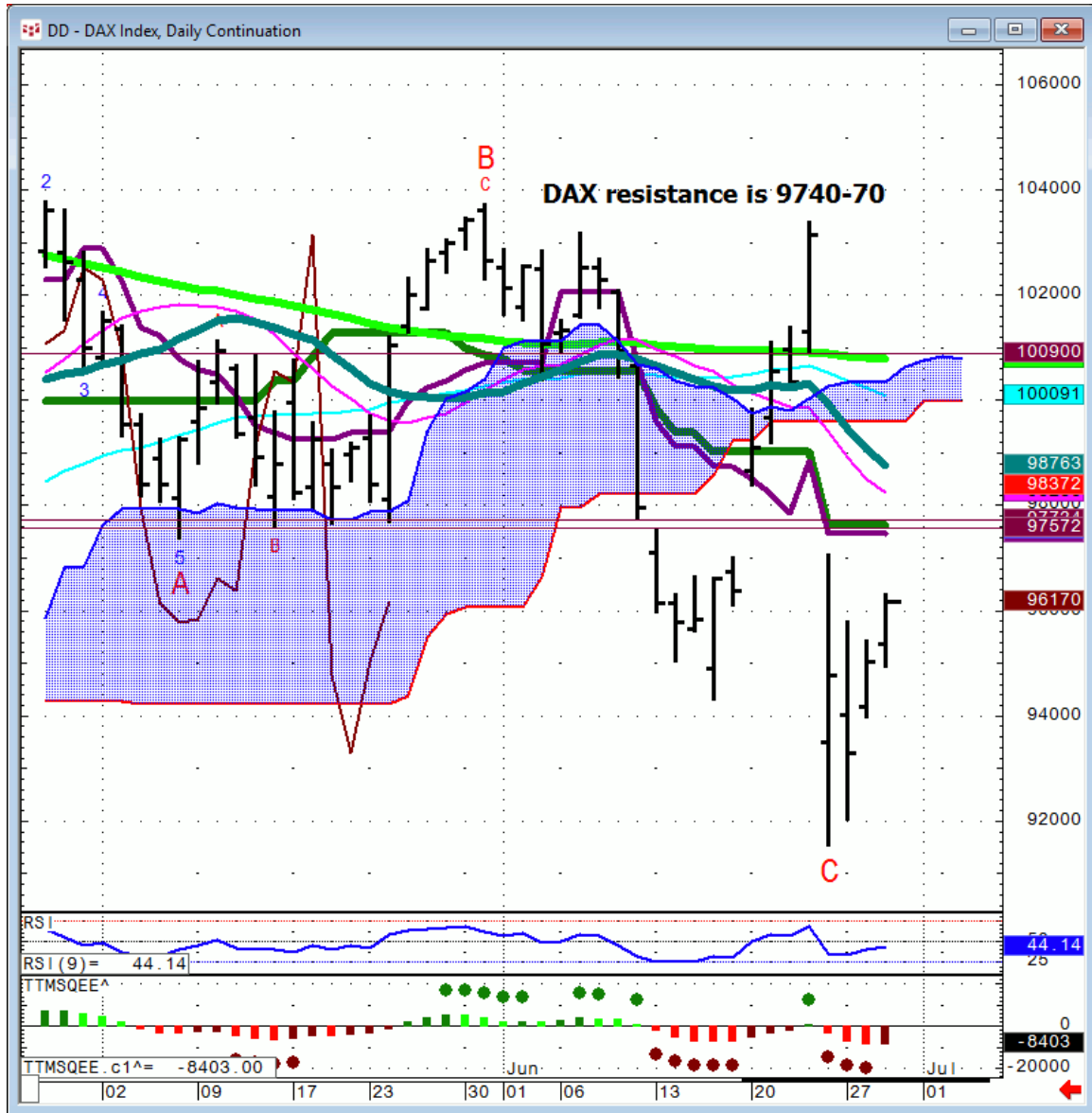
# Nasd 100...



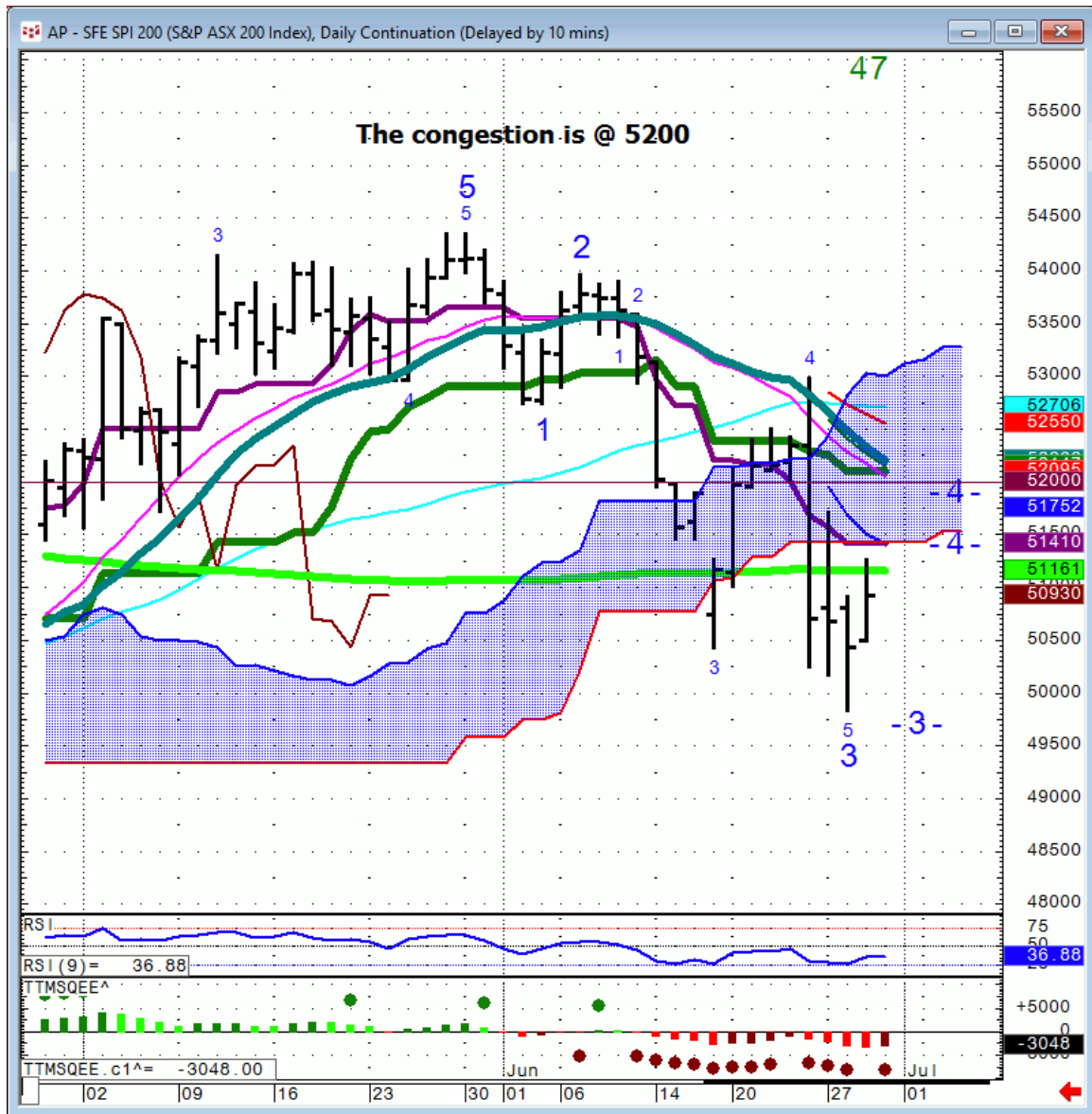
# Nikkei



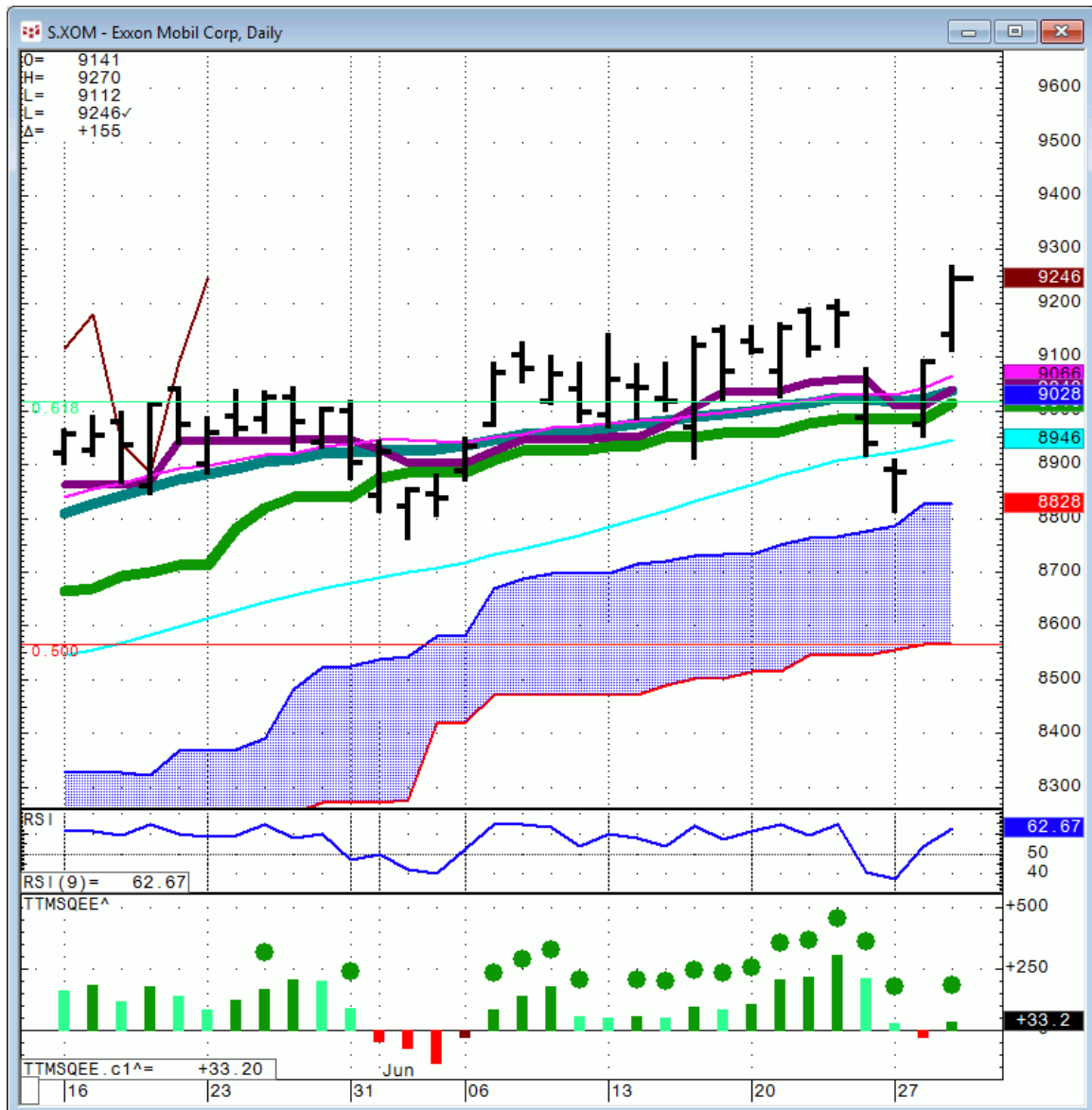
# DAX...

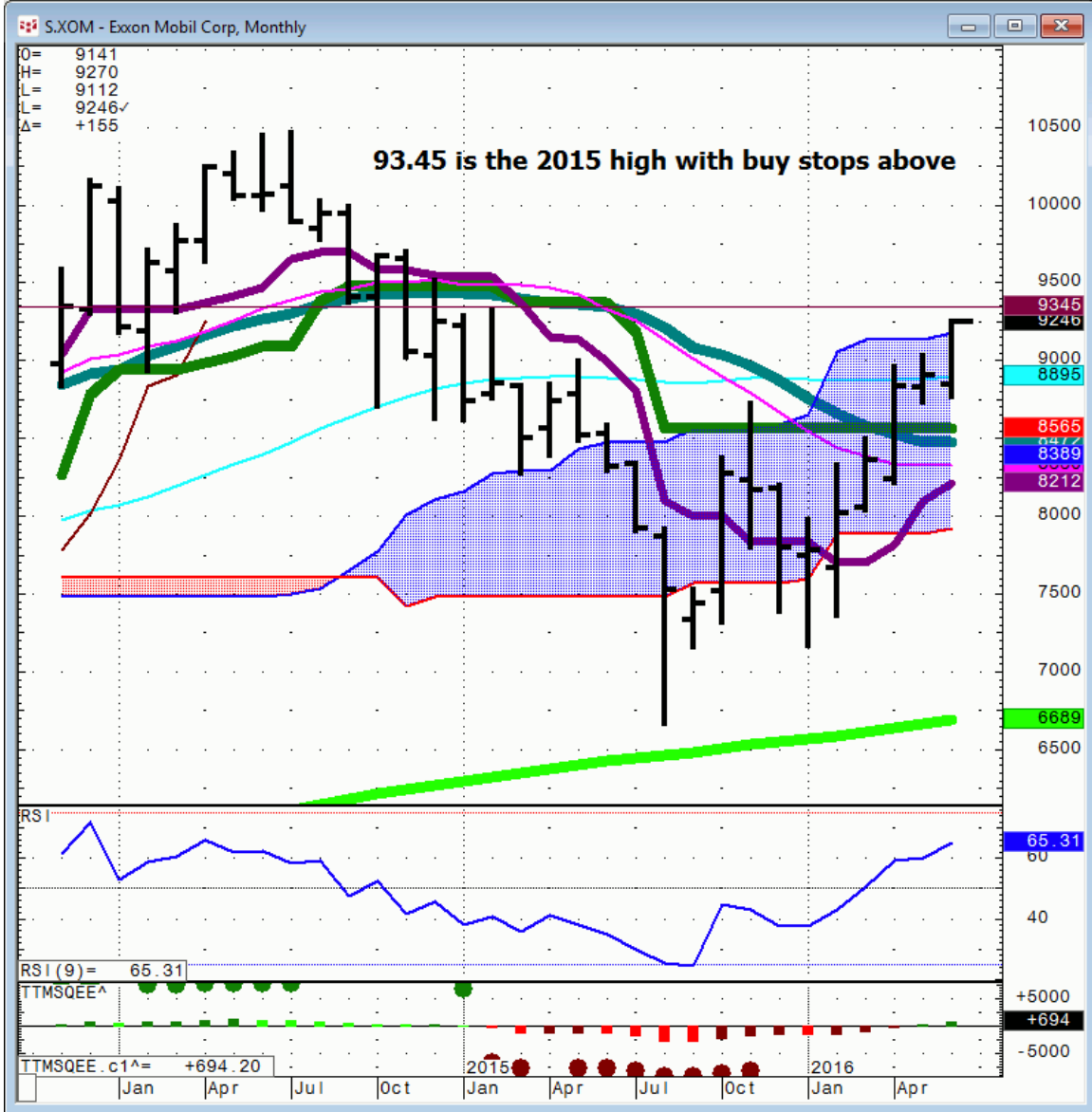


# ASX 200



**XOM...** made a new high for the year.





## ***Bonds***

<b>Futures</b>	<b>S1</b>	<b>Qtrly Pivot</b>	<b>R1</b>	
30 Yr.	159.3	163	166.04	170.19
Bund	159.07	165.3		

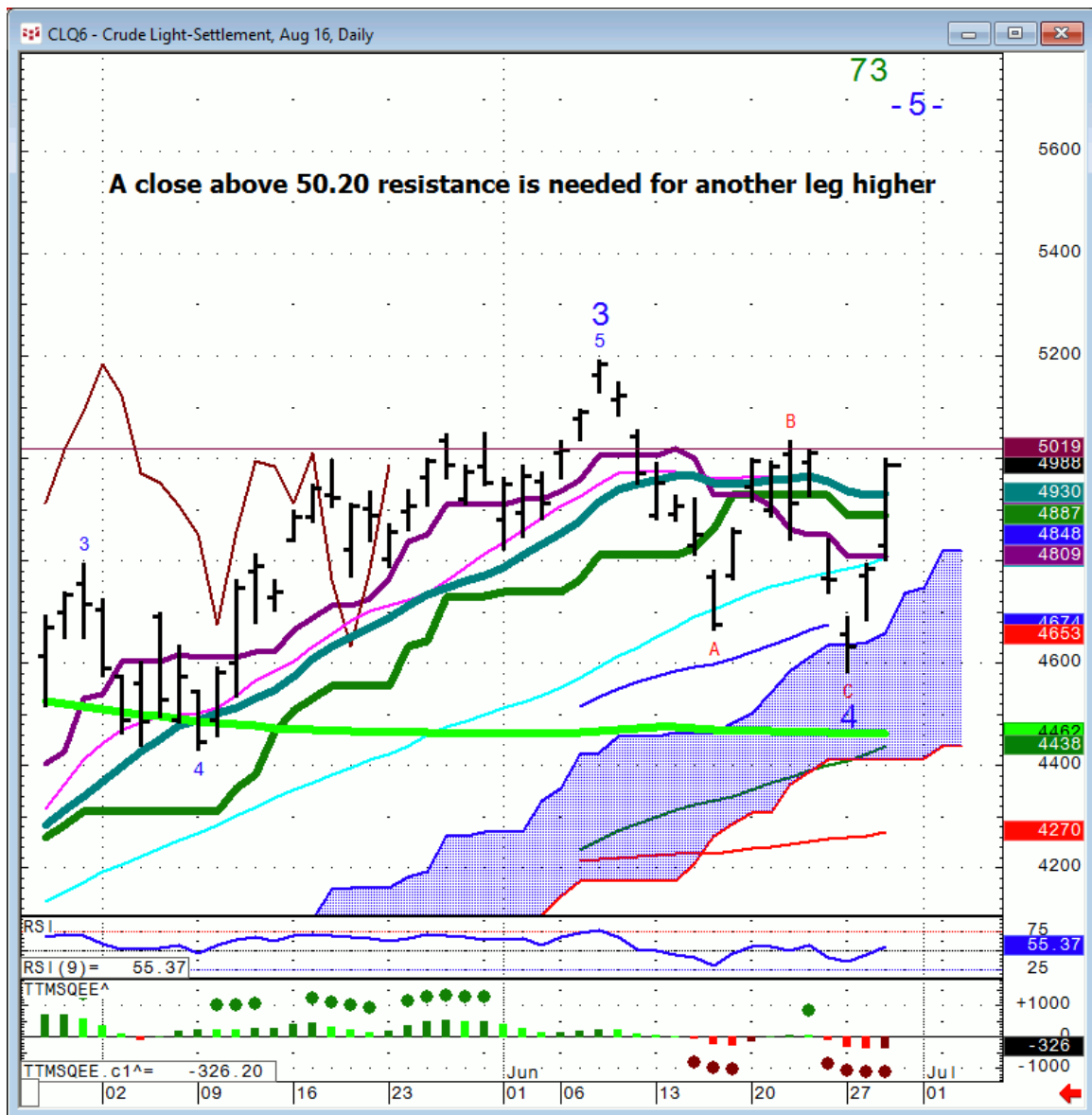
## FX

<b>FX</b>		<b>S1</b>	<b>Qtrly Pivot</b>	<b>R1</b>		
<b>Euro</b>		108.25	111	112.85		
<b>GBP/USD</b>			145.4	148.2		
<b>AUD/USD</b>	71.3	72.6	75	76.78	77.7	82.1
<b>NZD/USD</b>		63.1	67	69.30-50	73.9	
<b>USD/CAD</b>		133.85	128.5	123.15		
<b>CA6</b>		74.75	77.82	81.2		
<b>USD/JPY</b>		107.21	106.38	103	99	94.88
<b>JY6</b>		93.35	9400	97.07	101.24	105.40
<b>DXE</b>	88.07	92.9	96.5	100.2		

## Commodities

Commodity	S1	Qtrly Pivot	R1		
OIL	34	40.4	46.62	48.5	56.33
Gold	1175	1238	1307		
Copper	1.9	2.125	2.21	2.33	2.77

## Oil...



**Copper...**Sept needs to hold above 2.16 close to keep its MOJO going.



## **General Comments or Valuable Insight**

**There was a lot of buying of beaten up financials and Biotech the past 2 sessions.**

**Spu's can stall out anywhere below 2079 for a little pullback.**

**Tomorrow being qtr end the afternoon session has a tendency to see portfolio adjustments.**

**After another 100 point 2 day move the beast needs to digest again.**

**The qtrly update will be published over the weekend.**

**<http://www.whitewavetradingstrategies.com/glossary/>**

**WhiteWave Trading Strategies**  
**Independent Research from the Pros Pro**

**We Trade to Make Money**

[www.whitewavetradingstrategies.com](http://www.whitewavetradingstrategies.com)

[info@whitewavetradingstrategies.com](mailto:info@whitewavetradingstrategies.com)