



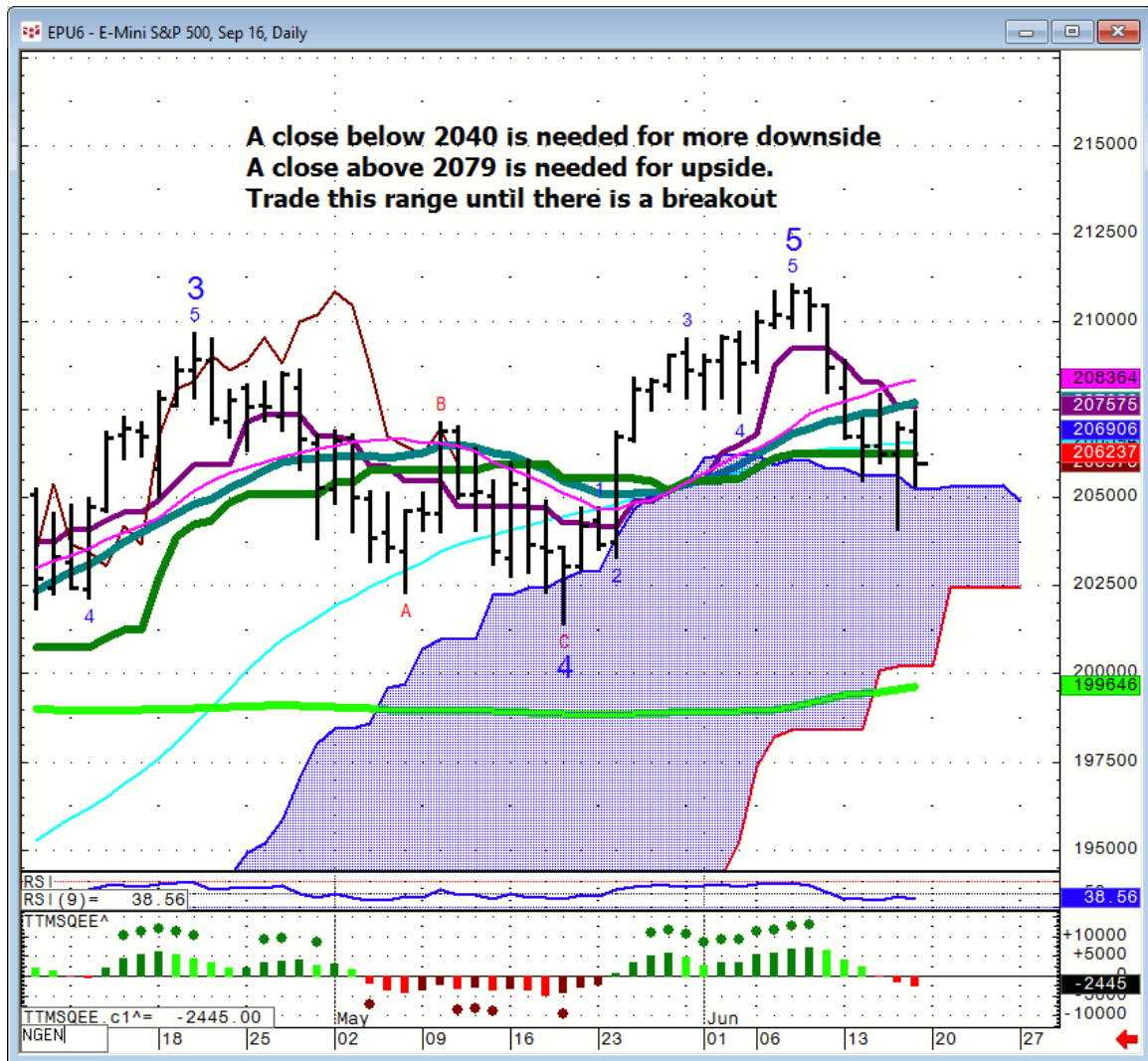
Daily Market Intelligence

A.M. LOOK

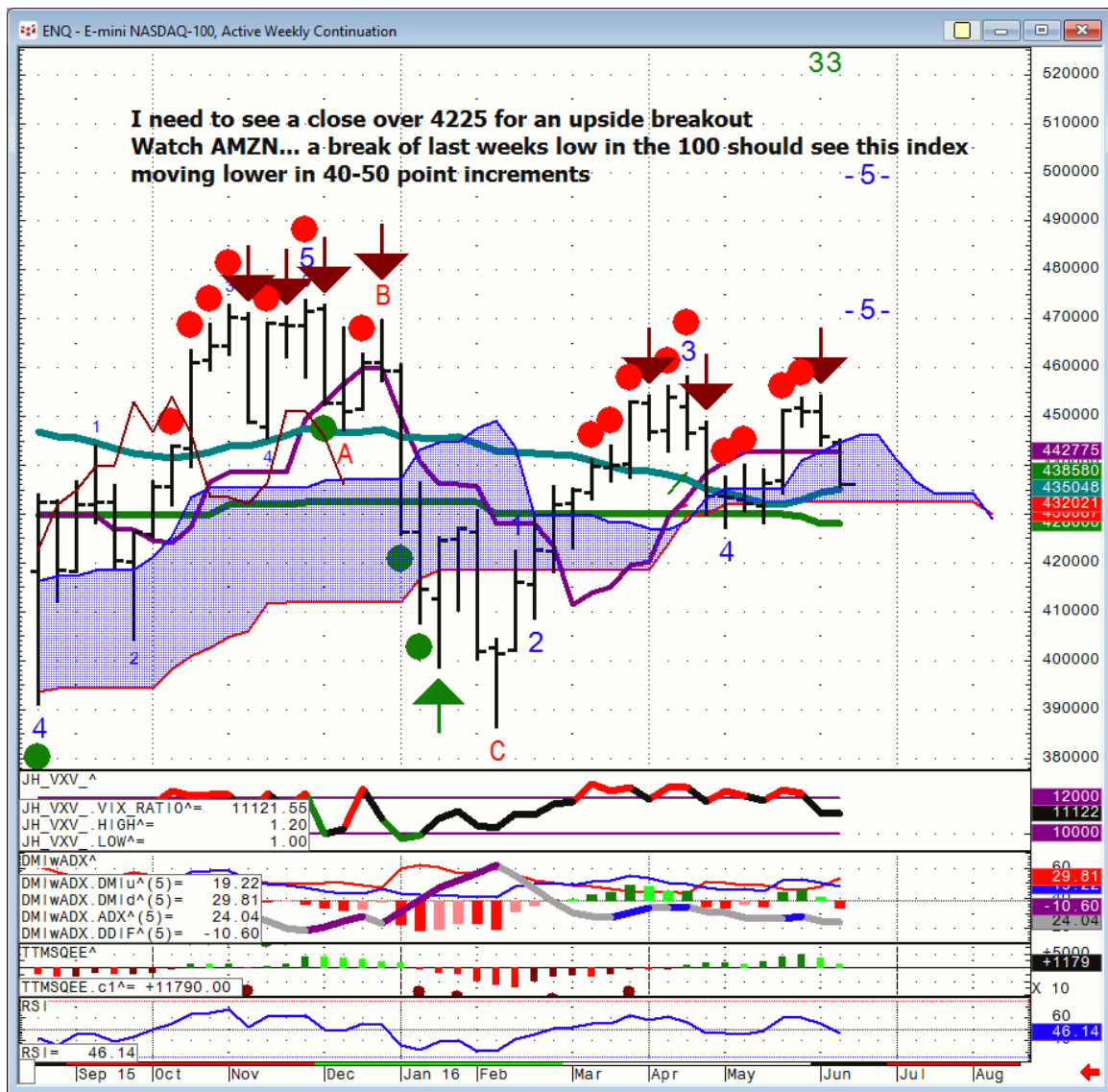
Stocks

Futures	S1	Qtrly Pivot	R1	
Spu	1965	2039	2090	2123
Nasd				
100	4265	4402	4475	4575
DAX	9340	10,000	10,650	
Nikkei	14,855	16,835	17,200	18,200

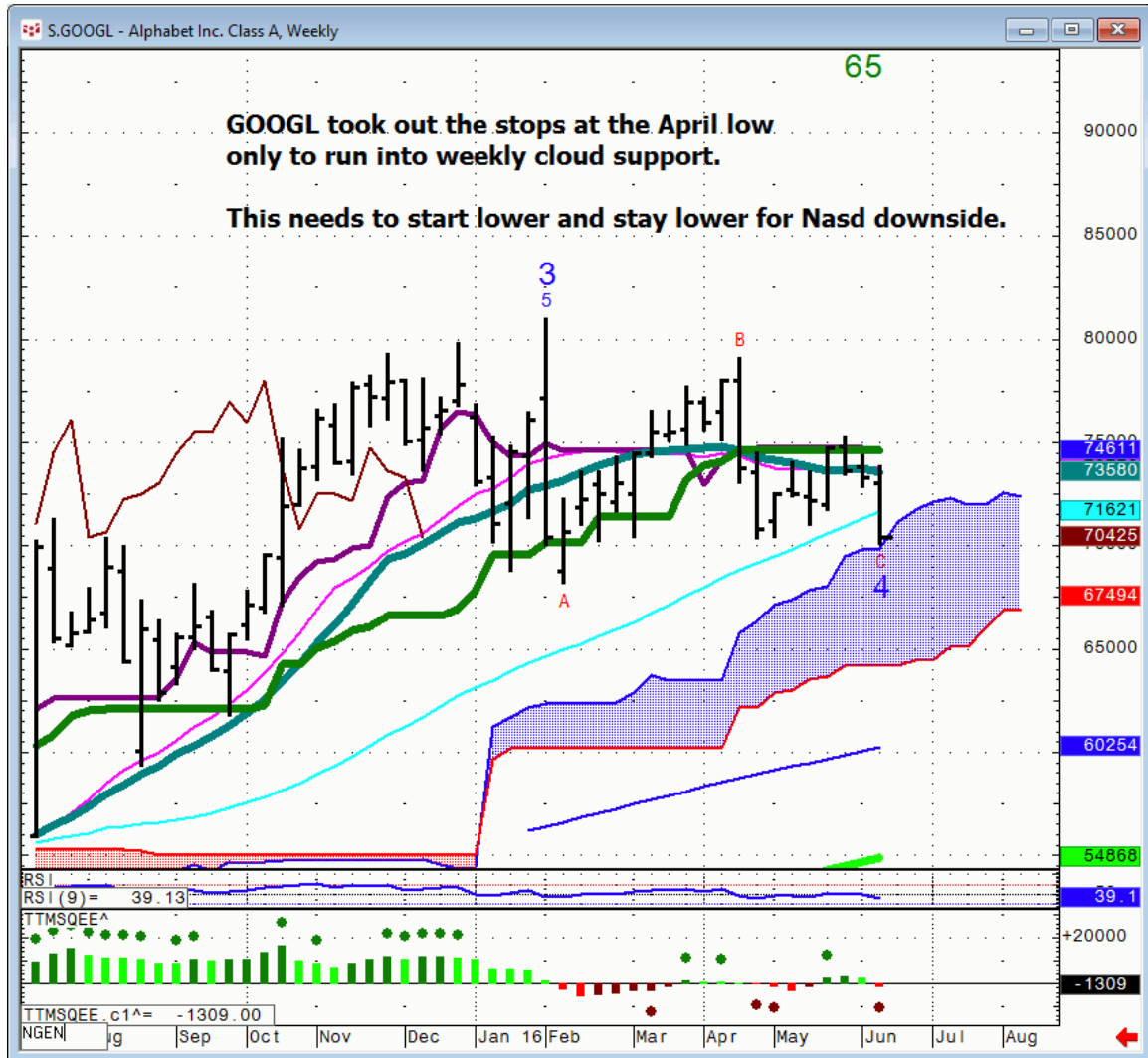
Spu...



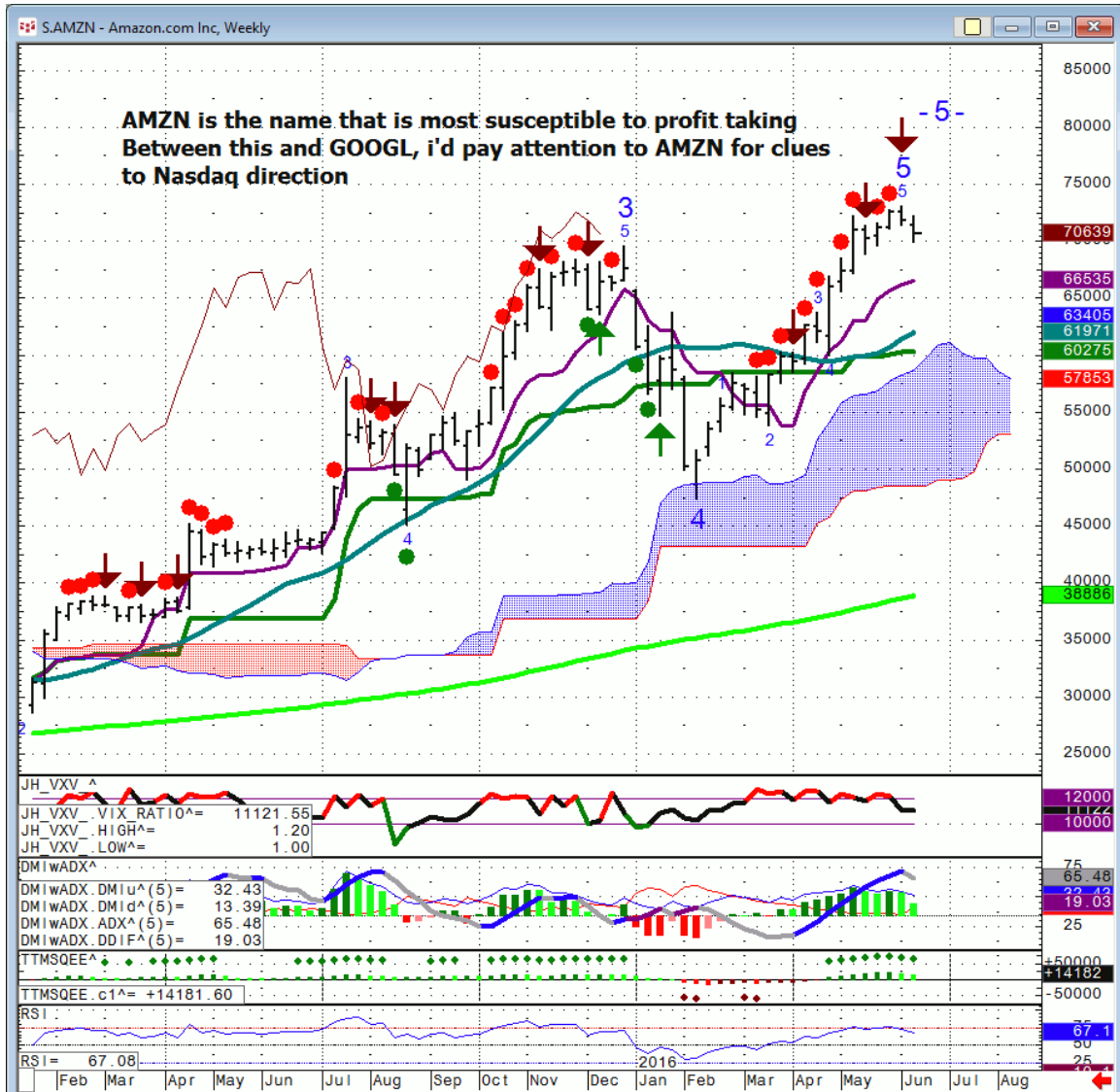
Nasd 100...4425 is resistance and the upside pivot



GOOGL...



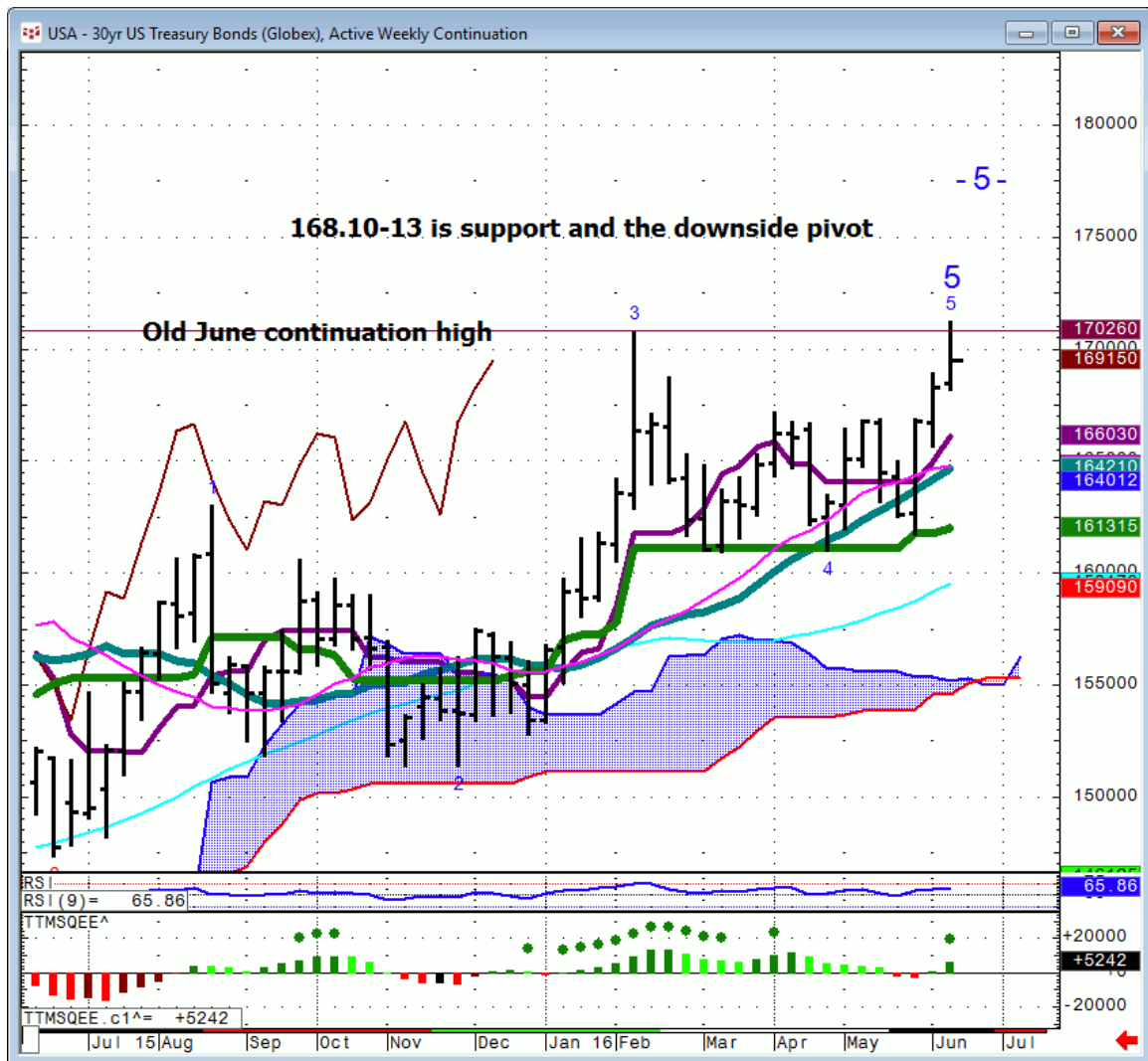
AMZN...



Bonds

Futures	S1	Qtrly Pivot	R1	
30 Yr.	159.3	163	166.04	170
Bund	159.07	163.4	165.2	

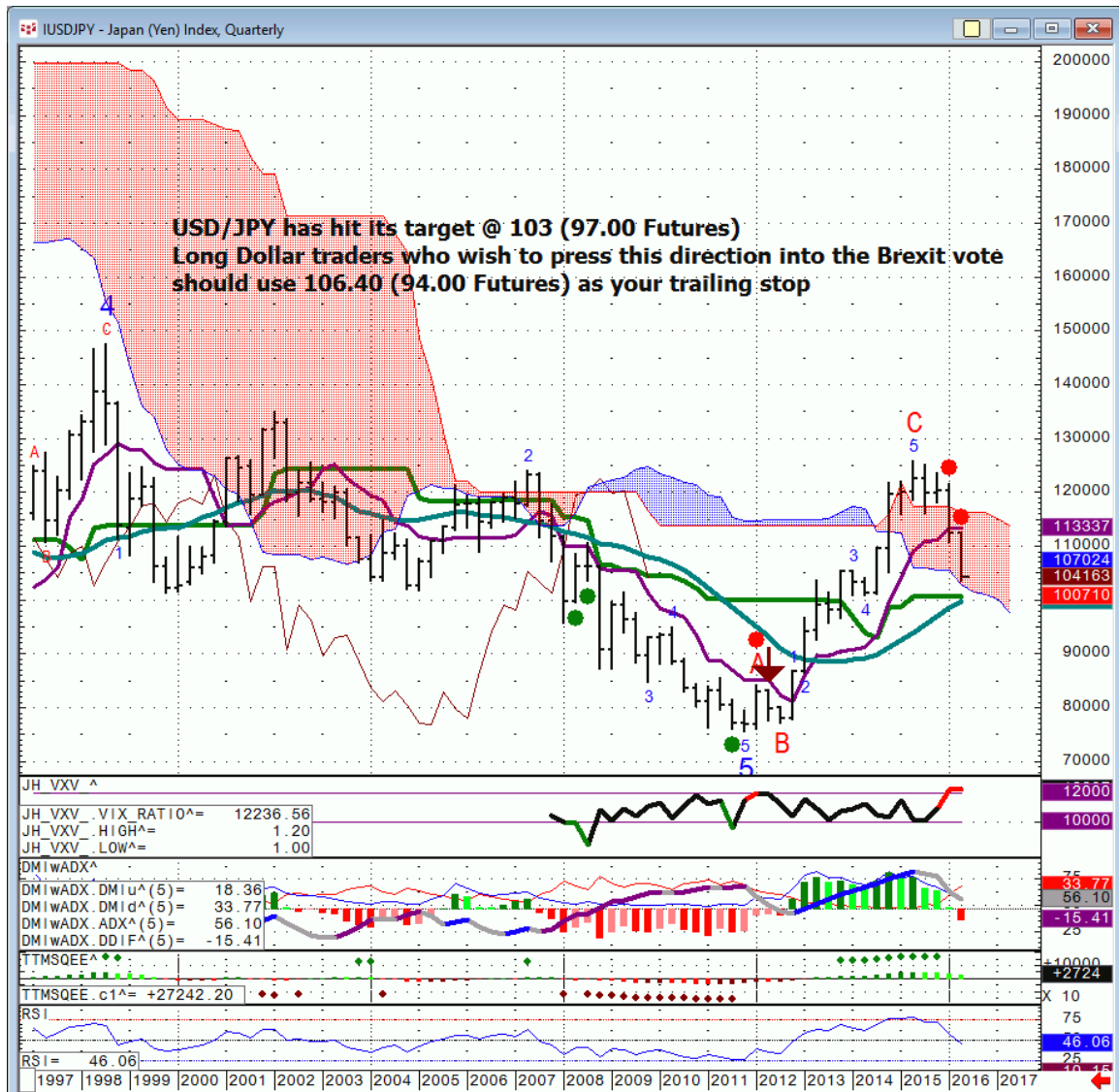
30 Yr...



FX

FX	S1	Qtrly Pivot	R1		
Euro	108.25	111		124.23	
GBP/USD		145.4	148.2		
AUD/USD	72.6	75	76.78	77.7	82.1
NZD/USD		67	69.30-50	73.9	
USD/CAD		133.85		127.7	123.15
CA6		74.75	77.1	78.3	81.2
USD/JPY		113.85	110.64	107.21	103
JY6		88	90.38	93.35	97.07
DXE	88.07	92.9	100.2		

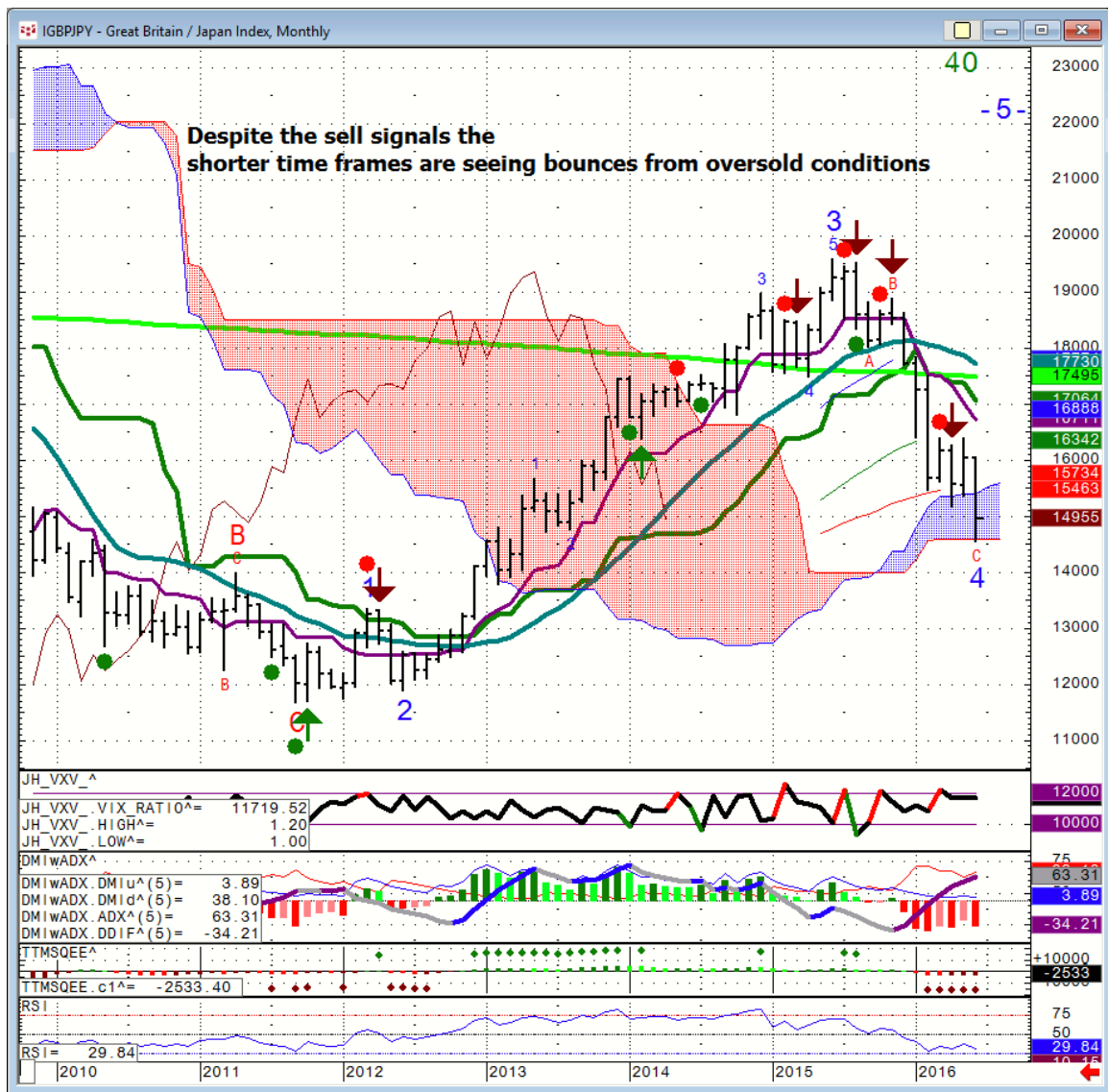
USD/JPY...



EUR/USD



GBP/JPY...



Commodities

Commodity	S1	Qtrly Pivot	R1			
OIL	34	40.4	46.62	48.5	56.33	
Gold	1175	1238	1307			
Copper	1.9	2.125	2.21	2.33	2.77	

Natgas..



NGL...



General Comments or Valuable Insight

Quad witching rebalancing is over. High beta names like AMZN & GOOGL still seem susceptible to selling given the technical patterns are neutral to negative.

Typically from now until the end of the qtr you start seeing equidistant back and forth movement in the indices, remaining fairly range bound until the first week of July.

This qtr we have a major event that can change all that which is the Brexit vote Wednesday night.

Life is way too short to lose your butt on this type of a bet.

Spu's have set up an almost 40 handle wiggle. Breaking out of the aforementioned range should lead to moves in 20 point increments either up or down.

This week my focus will be on non-correlated assets.

Grains and the other softs do not care about Brexit although Gold and the currencies will.

Less will be more.

<http://www.whitewavetradingstrategies.com/glossary/>

WhiteWave Trading Strategies
Independent Research from the Pros Pro

We Trade to Make Money

www.whitewavetradingstrategies.com

info@whitewavetradingstrategies.com