



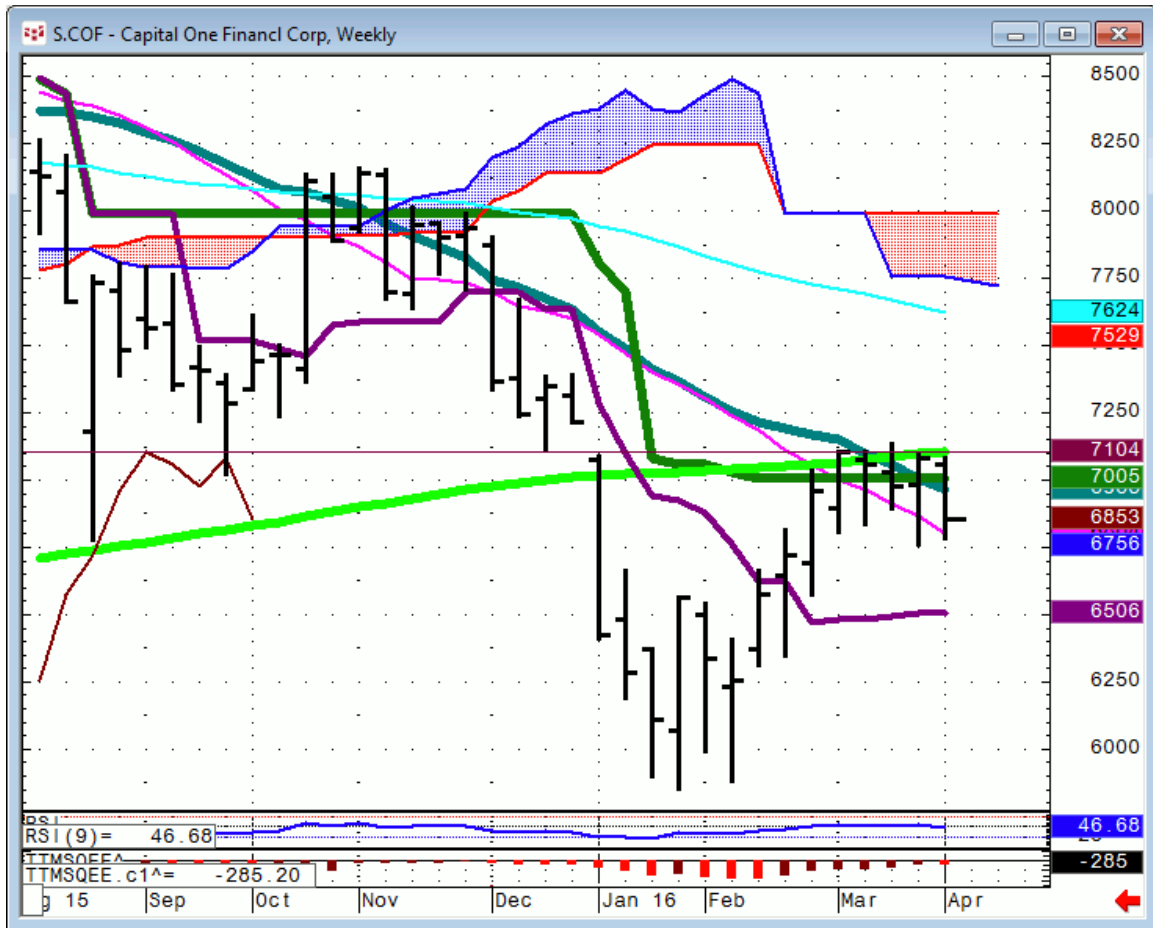
Daily Market Intelligence

A.M. LOOK

Stocks

Futures	S1	Qtrly Pivot	R1
Spu	1965	2039	2090
Nasd 100		4402	4455-75
DAX		10,000	
Nikkei	14,855	16,835	17,200

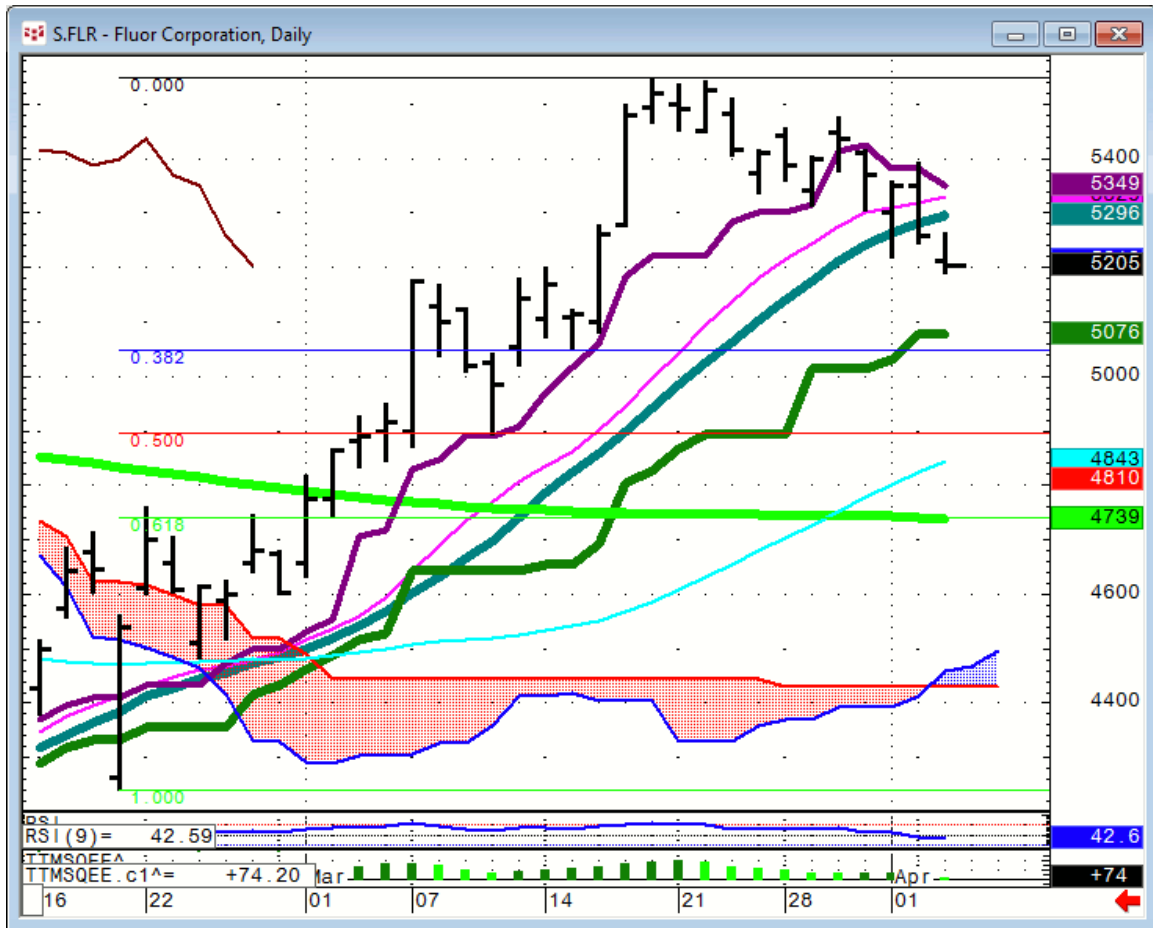
COF...has run out of steam. 71 is the closing resistance level.



CQG Inc. © 2016 All rights reserved worldwide. <http://www.cqg.com>

Wed Apr 06 2016 06:48:40, CQG 16.14.857

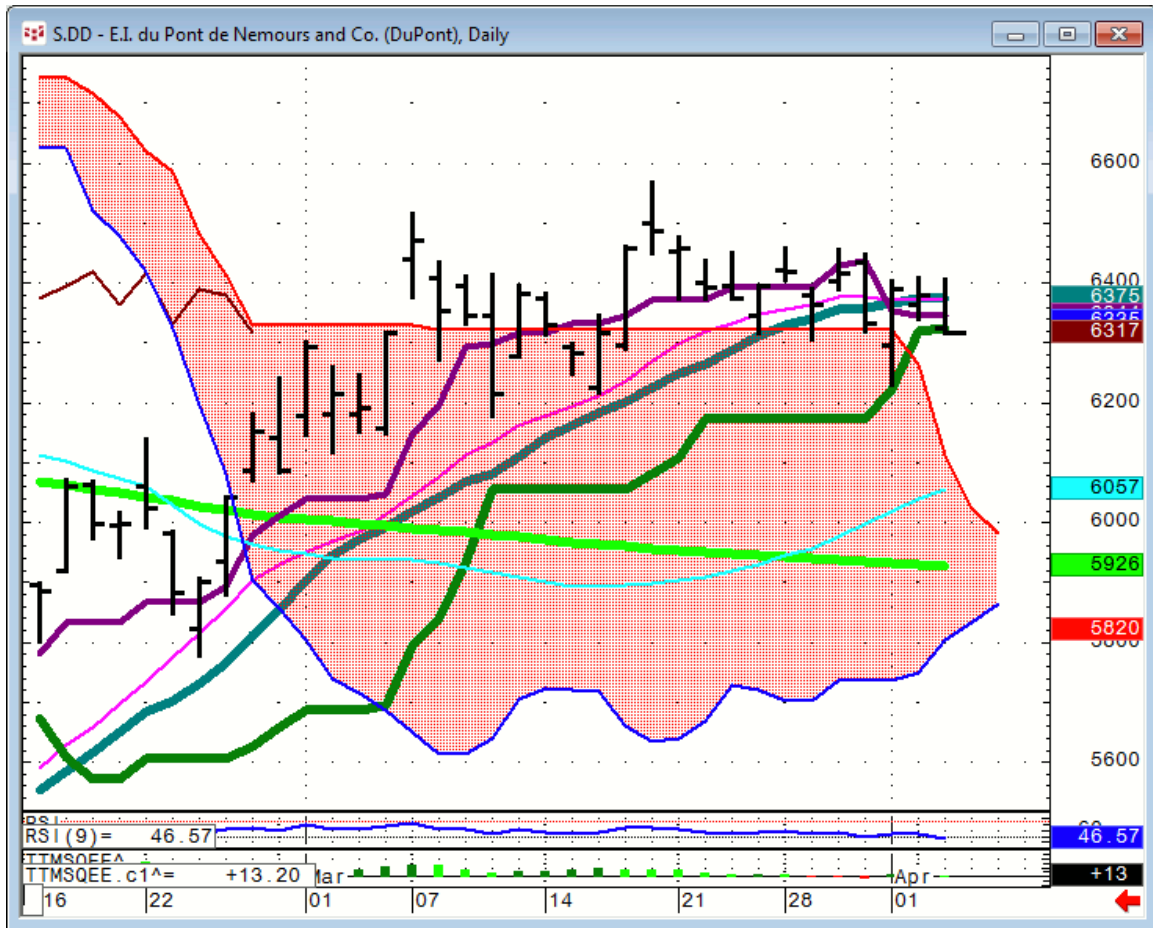
FLR... has had a huge move with a double top @ 55.50. this looks attractive again near the 50 DMA below 49



CQG Inc. © 2016 All rights reserved worldwide. <http://www.cqg.com>

Wed Apr 06 2016 06:47:24, CQG 16.14.857

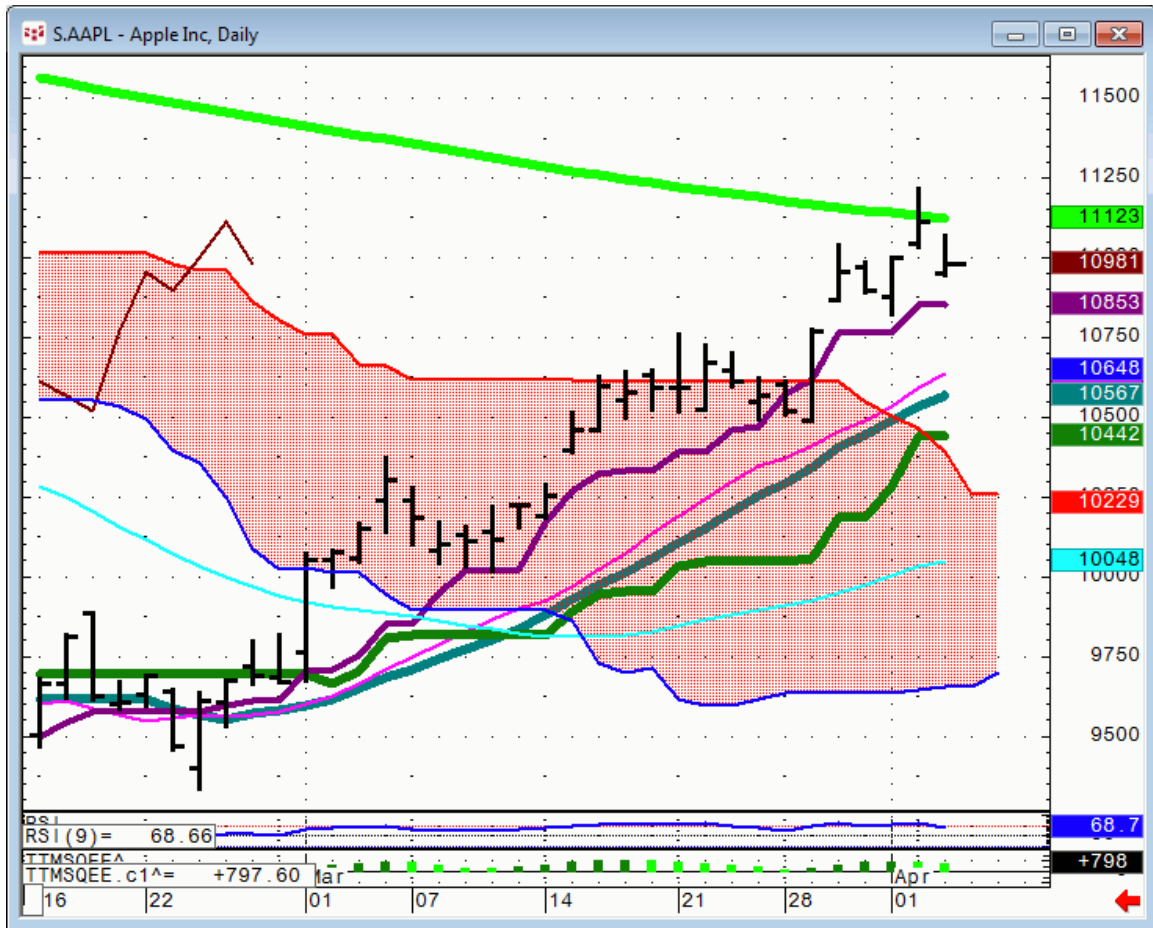
DD...needs to hold yesterday's low to not go into correction mode.



CQG Inc. © 2016 All rights reserved worldwide. <http://www.cqg.com>

Wed Apr 06 2016 06:46:07, CQG 16.14.857

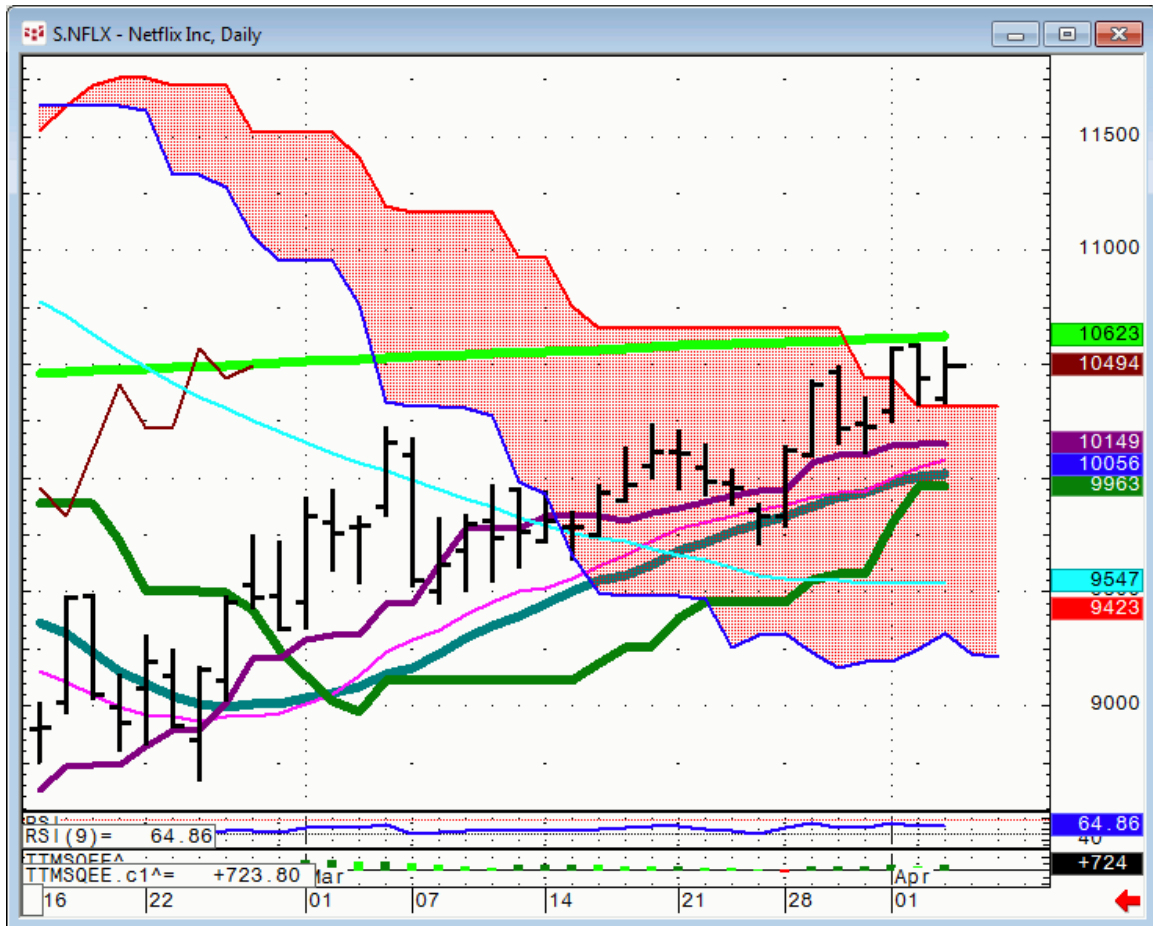
AAPL...has yet to close above it's 200DMA. Let's see where it holds this next break



CQG Inc. © 2016 All rights reserved worldwide. <http://www.cqg.com>

Wed Apr 06 2016 06:43:49, CQG 16.14.857

NFLX...has stalled at it's 200 Week MA. Closing above 106.20 is needed for another run higher.



CQG Inc. © 2016 All rights reserved worldwide. <http://www.cqg.com>

Wed Apr 06 2016 06:43:20, CQG 16.14.857

Bonds

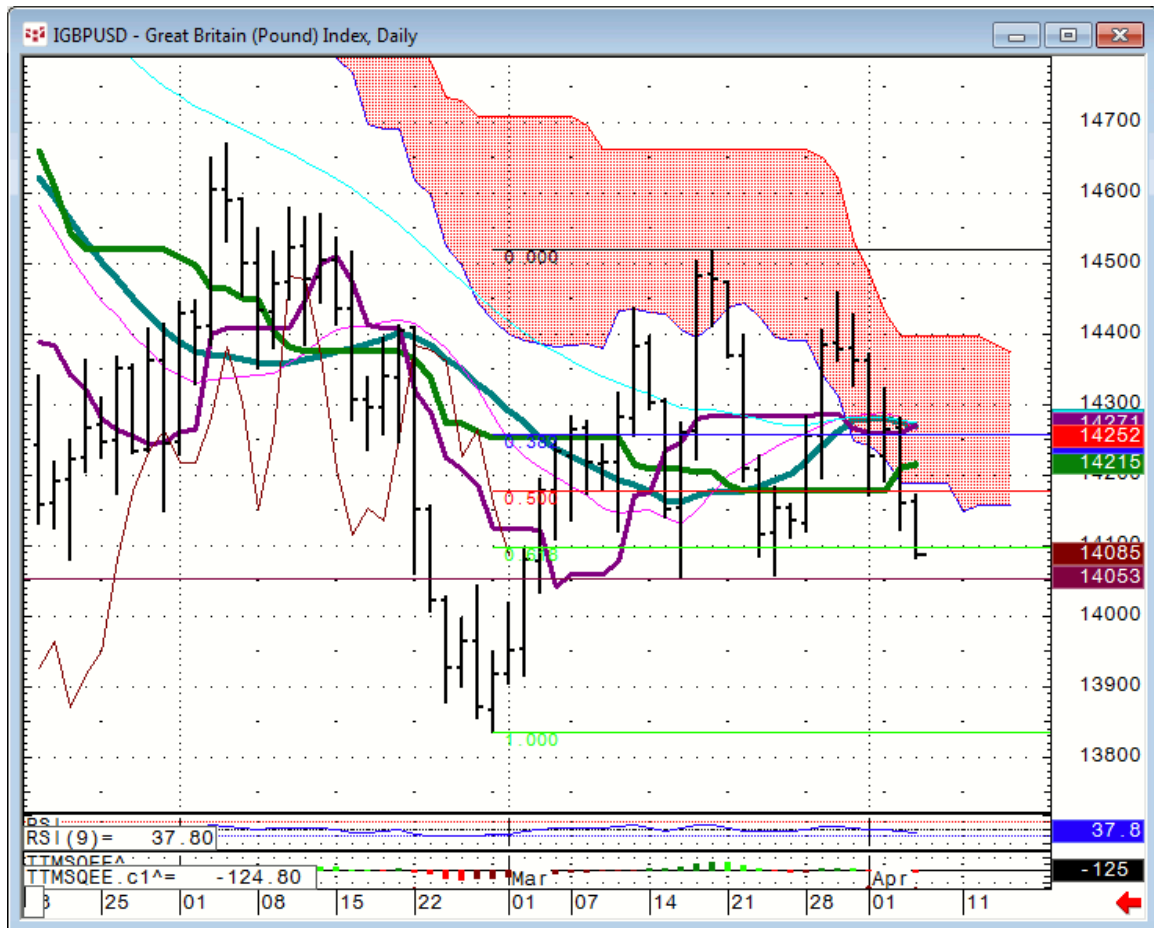
Futures	S1	Qtrly Pivot	R1
30 Yr.	159.3	163	166.04
Bund		163.4	165.2

FX

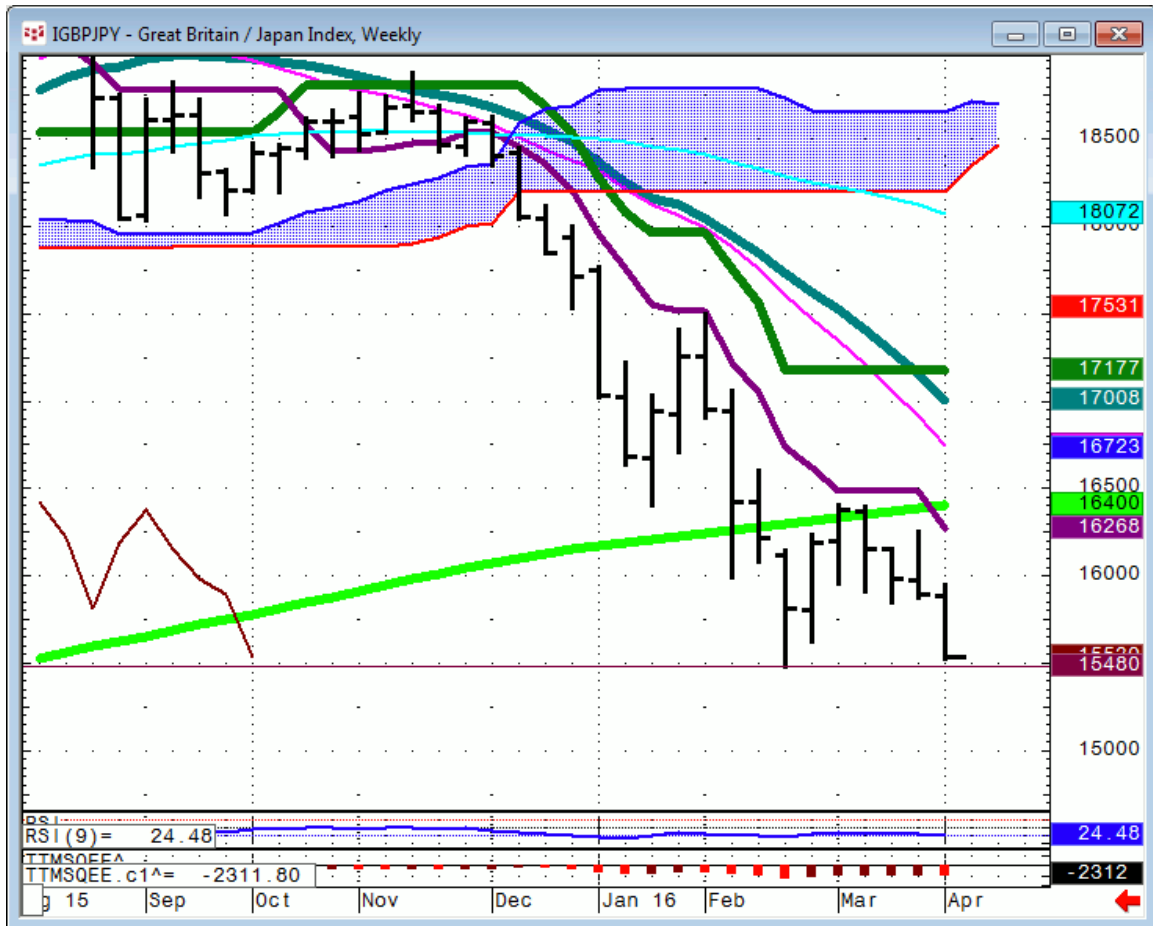
FX	S1	Qtrly Pivot	R1
Euro	108.25	111	
GBP/USD		145.4	148.2
AUD/USD	72.6	75	76.78
NZD/USD		67	69.30-50
USD/CAD		133.85	127.7
CA6		74.75	77.1
			78.3

USD/JPY		113.85	110.64	107.21
JY6		88	90.38	93.35
DXE	92.9	96.5	100.2	

GBP/USD....140.67 is the low of the past couple of months. Sustained price action through this level is needed for a test of the last low.



GBP/JPY...154.80 is the matching level in this cross.



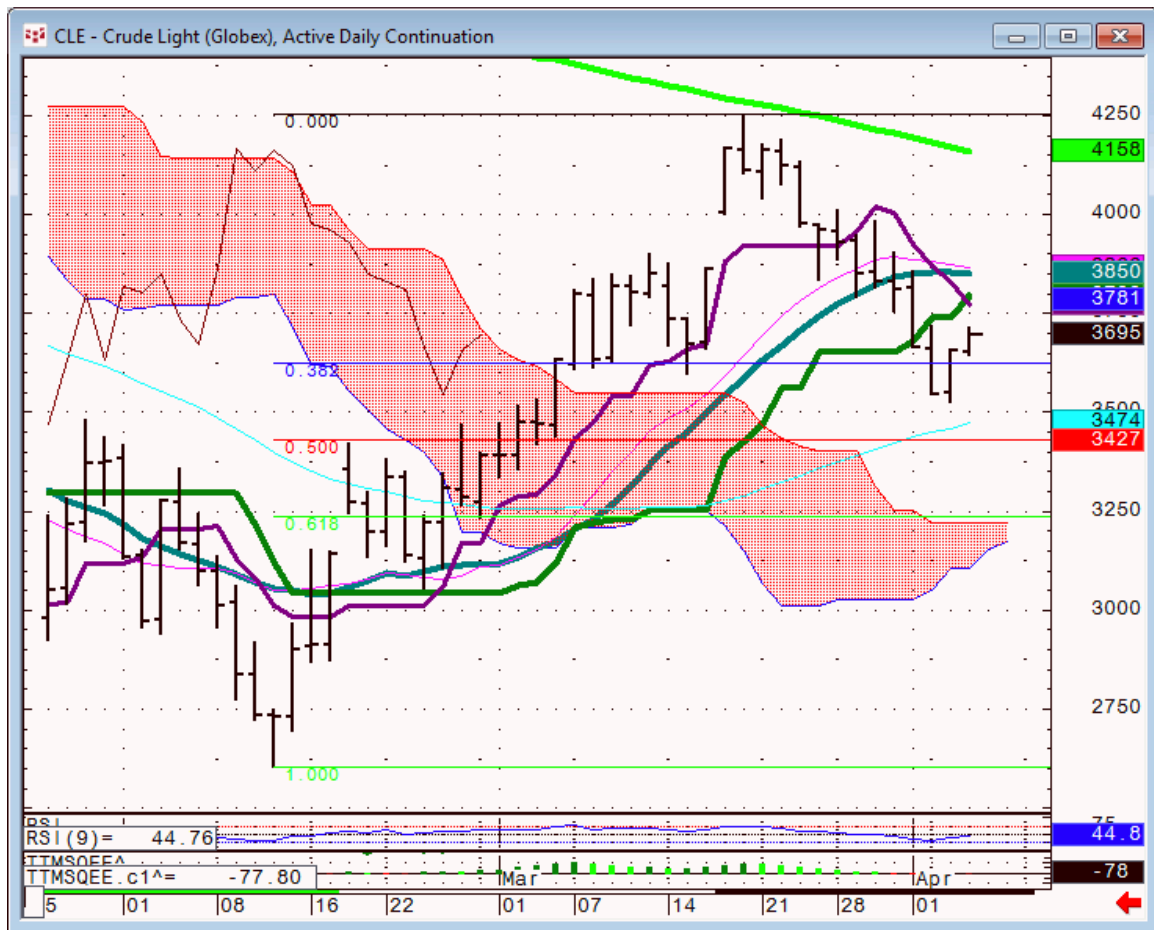
CQG Inc. © 2016 All rights reserved worldwide. <http://www.cqg.com>

Wed Apr 06 2016 07:08:55, CQG 16.14.857

Commodities

Futures	S1	Qtrly Pivot	R1
OIL	34	40.4	
Gold		1238	
Copper	2.125	2.21	

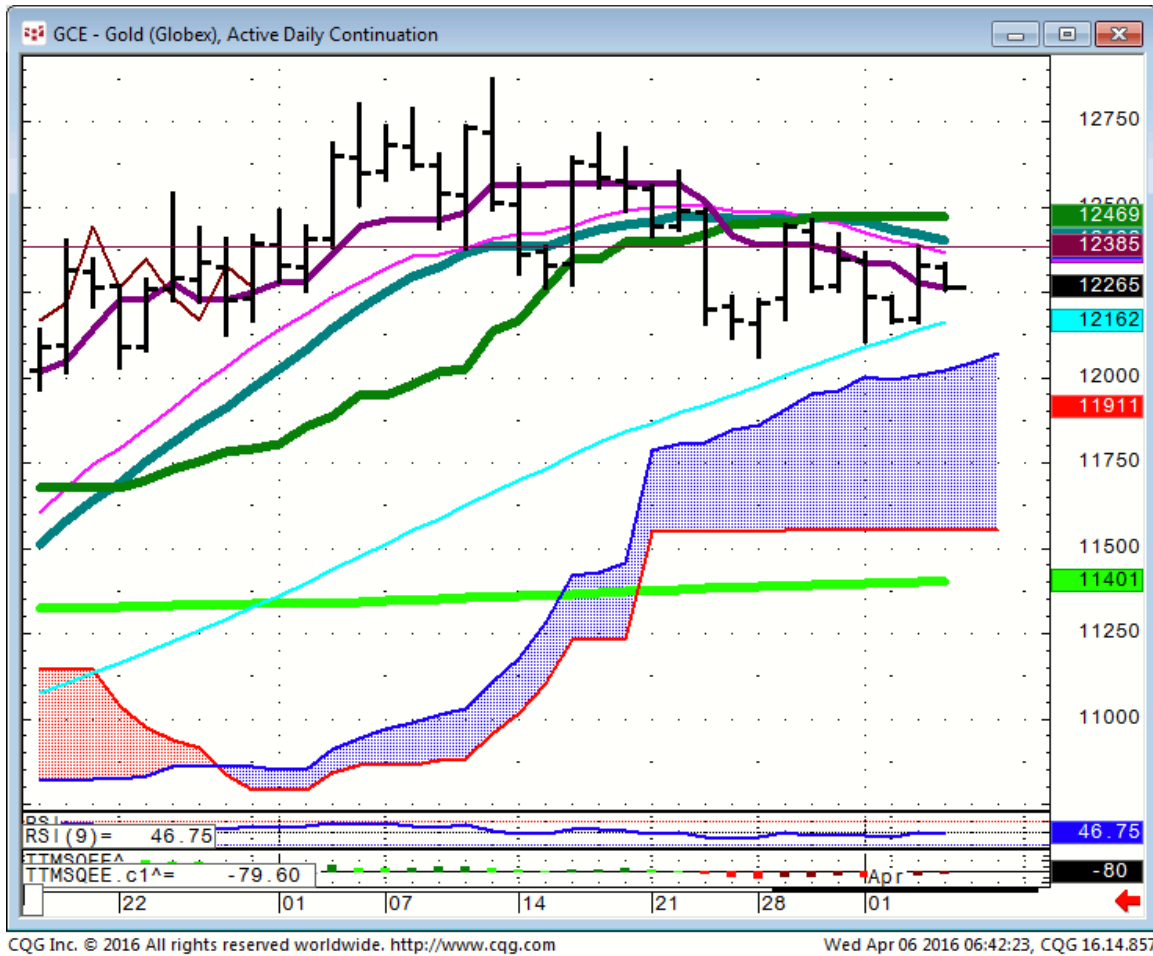
Oil...not chasing this strength today. Needs over 38.11 to confirm higher. I'd still like to see a break closer to the 50 DMA in the 34's to establish new longs.



CQG Inc. © 2016 All rights reserved worldwide. <http://www.cqg.com>

Wed Apr 06 2016 06:39:50, CQG 16.14.857

Gold...weakens below 1226.



General Comments or Valuable Insight

Welcome to the Mid-Week shuffle.

The Yen is not backing off via the crosses and the Spu's keep coming back to my qtrly neutral # and jamming everybody.

We're at levels in a lot of instruments where you want to keep your powder dry and not over trade.

WhiteWave Trading Strategies
Independent Research from the Pros Pro

We Trade to Make Money
www.whitewavetradingstrategies.com
info@whitewavetradingstrategies.com

