



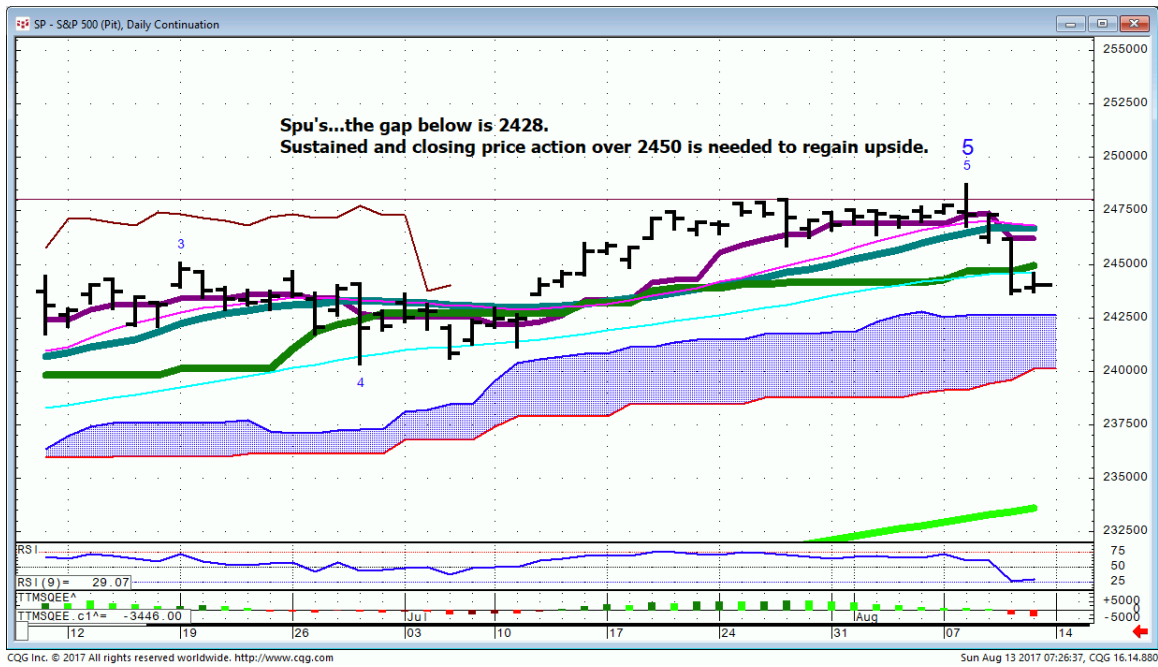
Daily Market Intelligence

Neutral DJI
Neutral Spu's
Neutral Nasd 100..
Neutral DAX & Nikkei.
Neutral All Bond markets

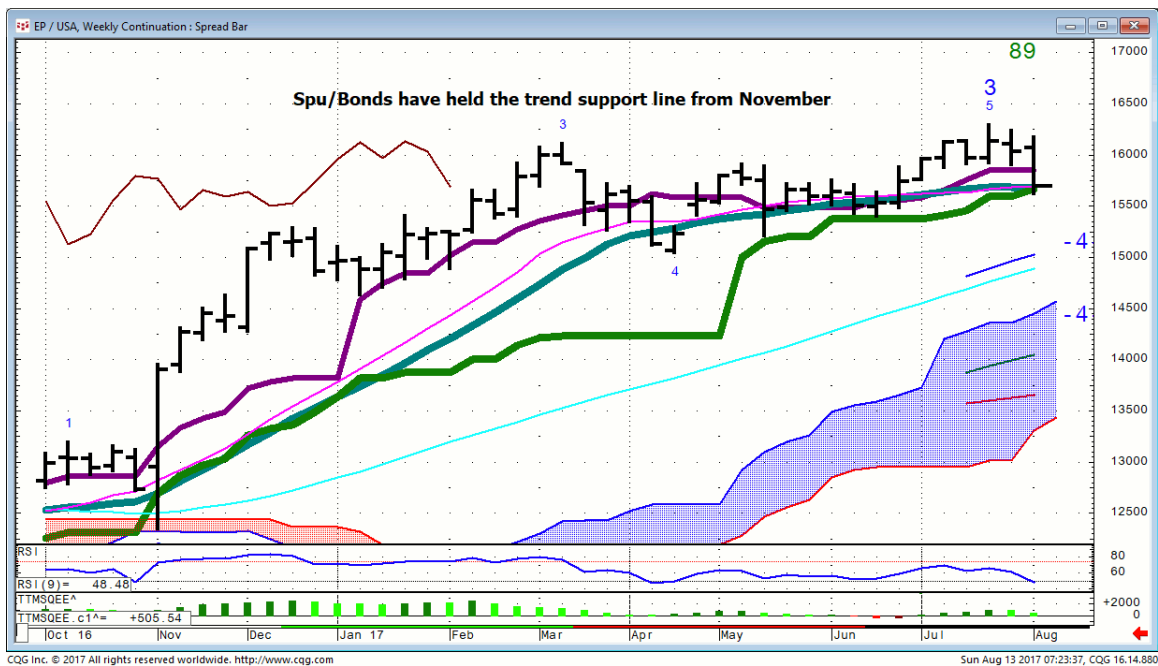
Risk Spreads are Neutral

Stocks

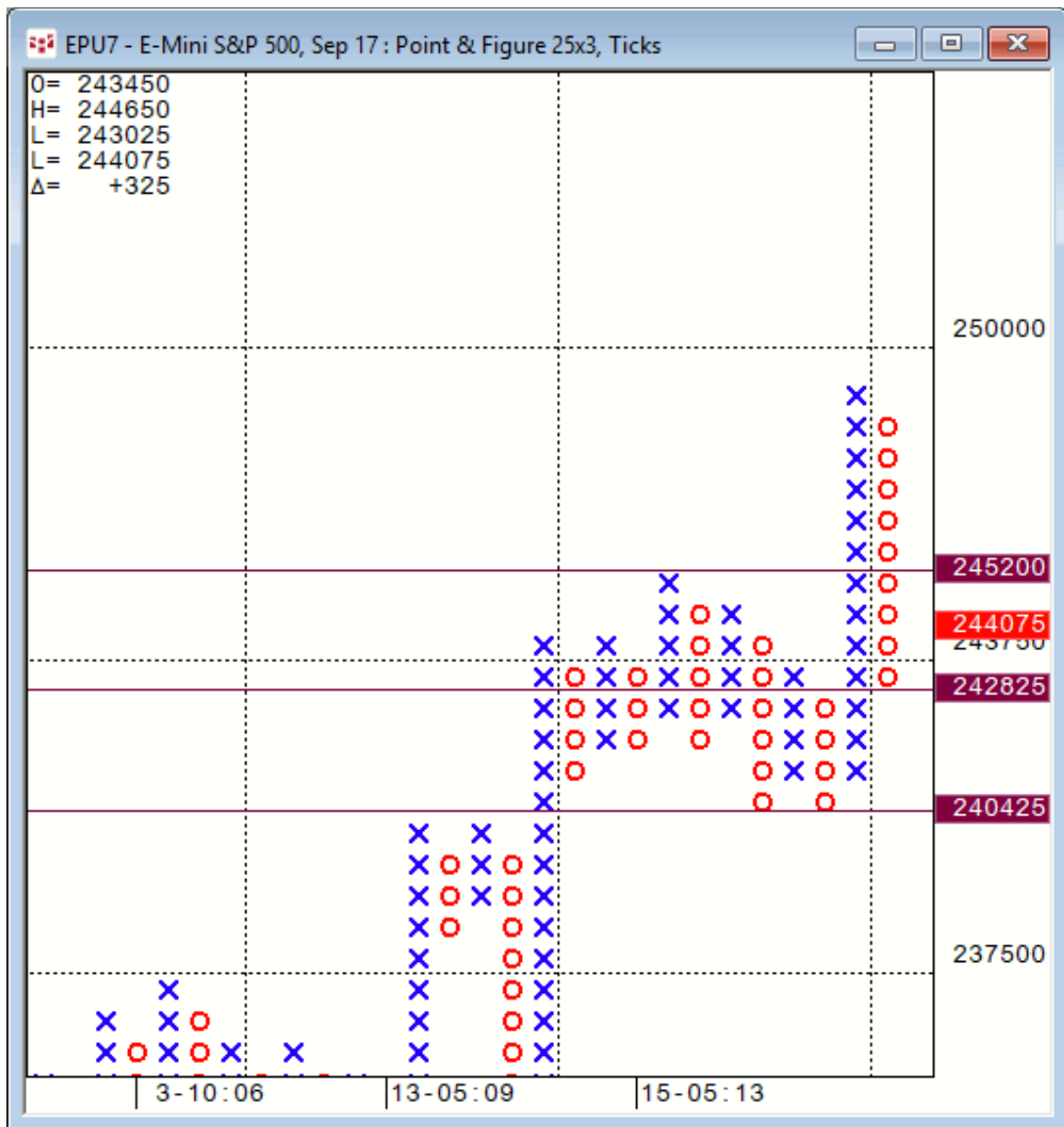
Spu...Pit daily



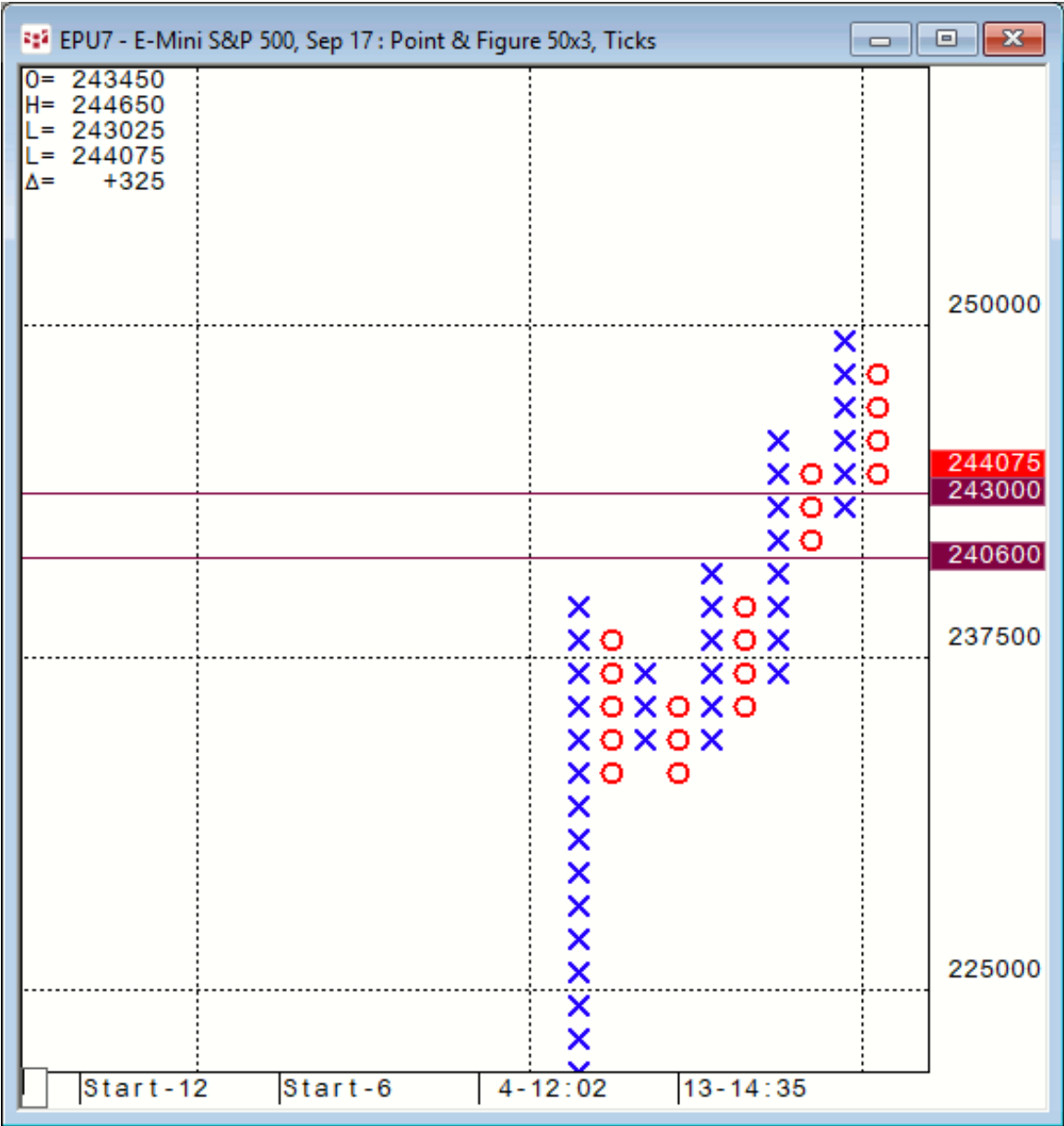
Spu/Bonds Weekly continuation



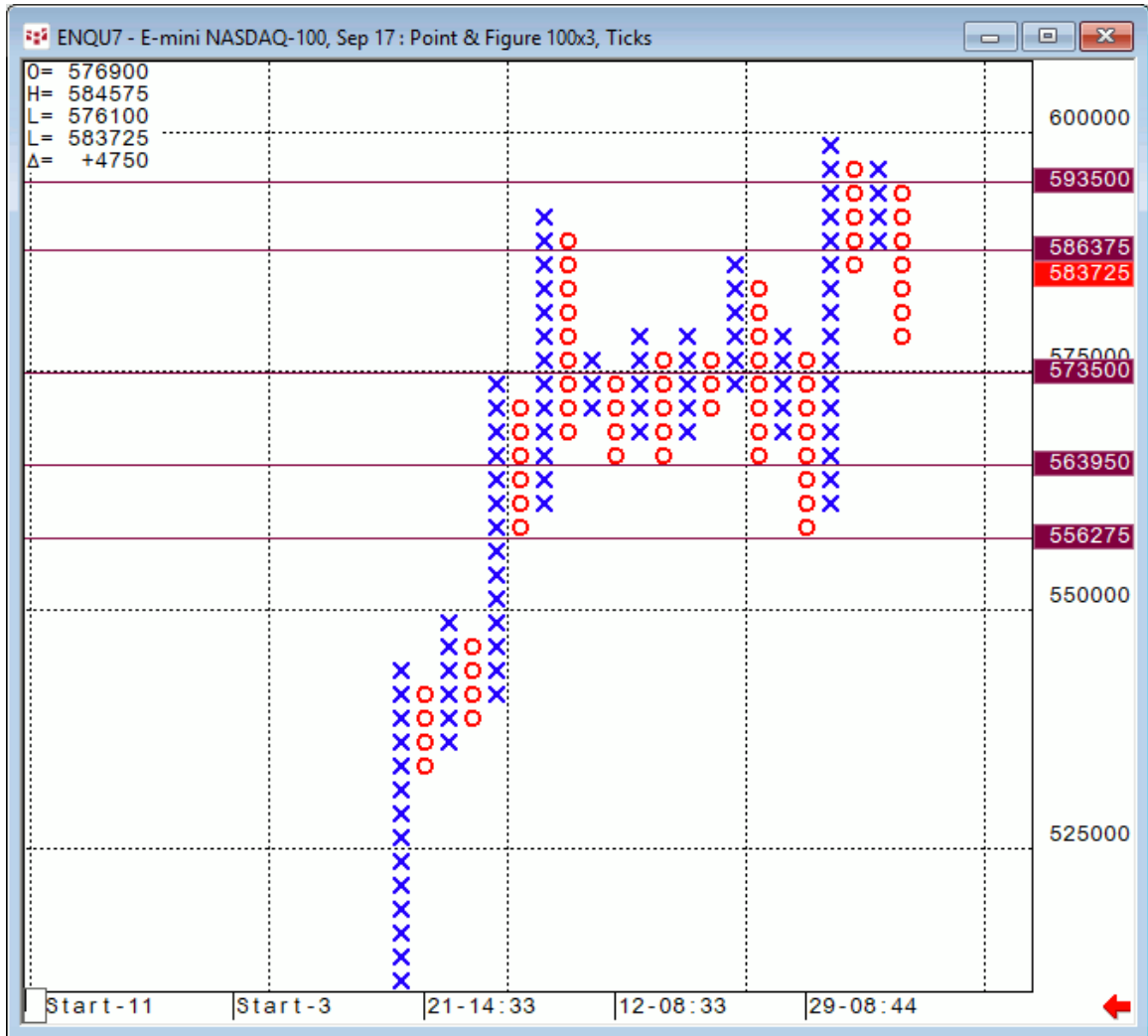
Spu...25X3 Point & Figure



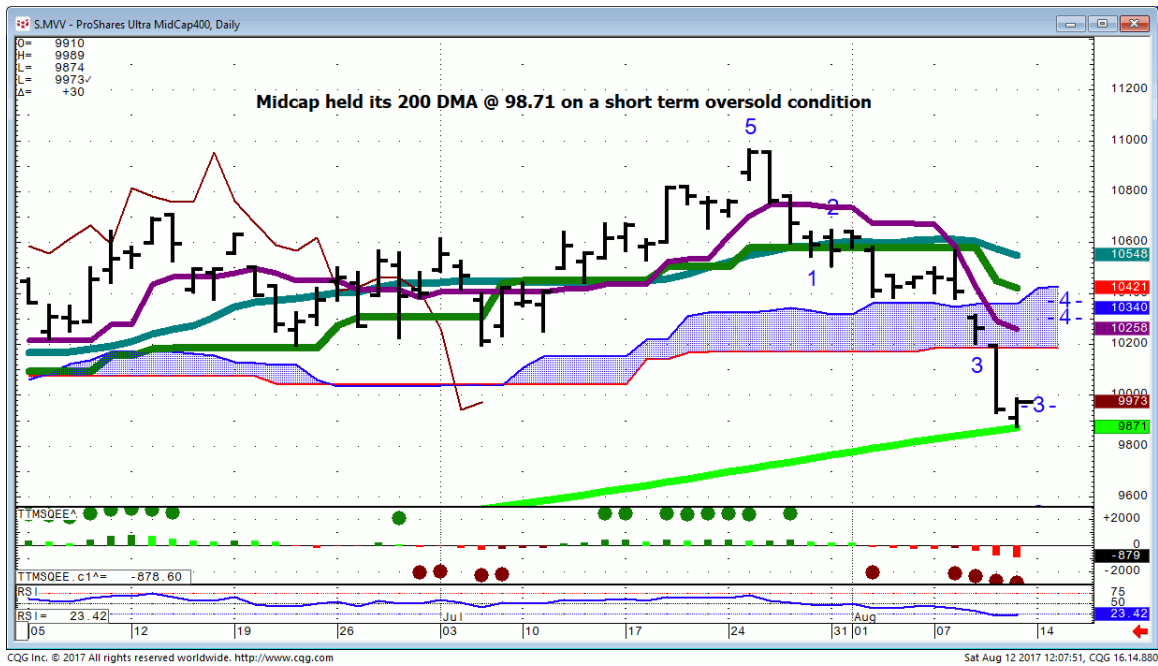
Spu...50X3 Point & Figure...completed the back and fill swing I have been looking for.



Nasd 100...100X3 Point & Figure



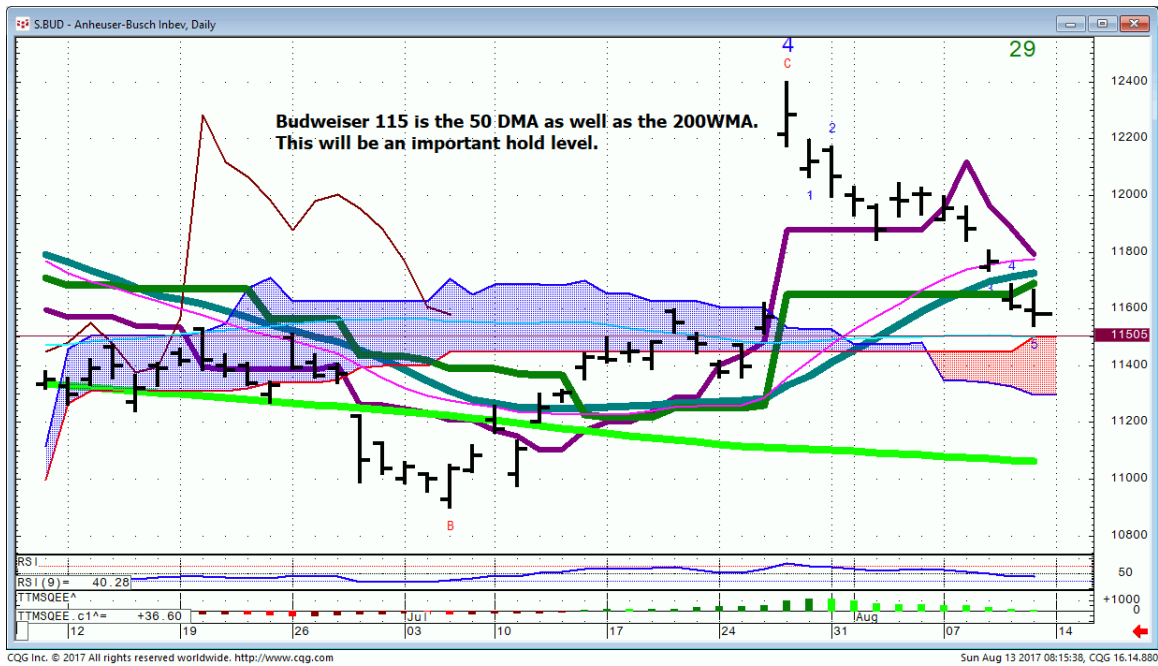
MVV...Proshares Ultra Midcap400 daily



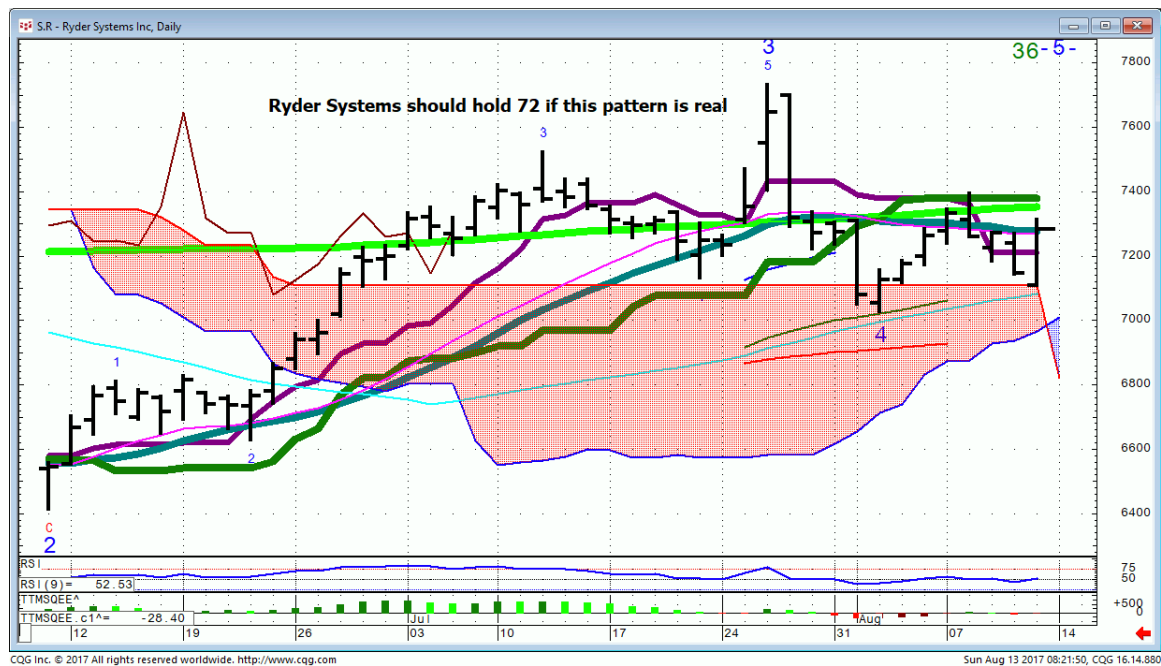
ULTA...



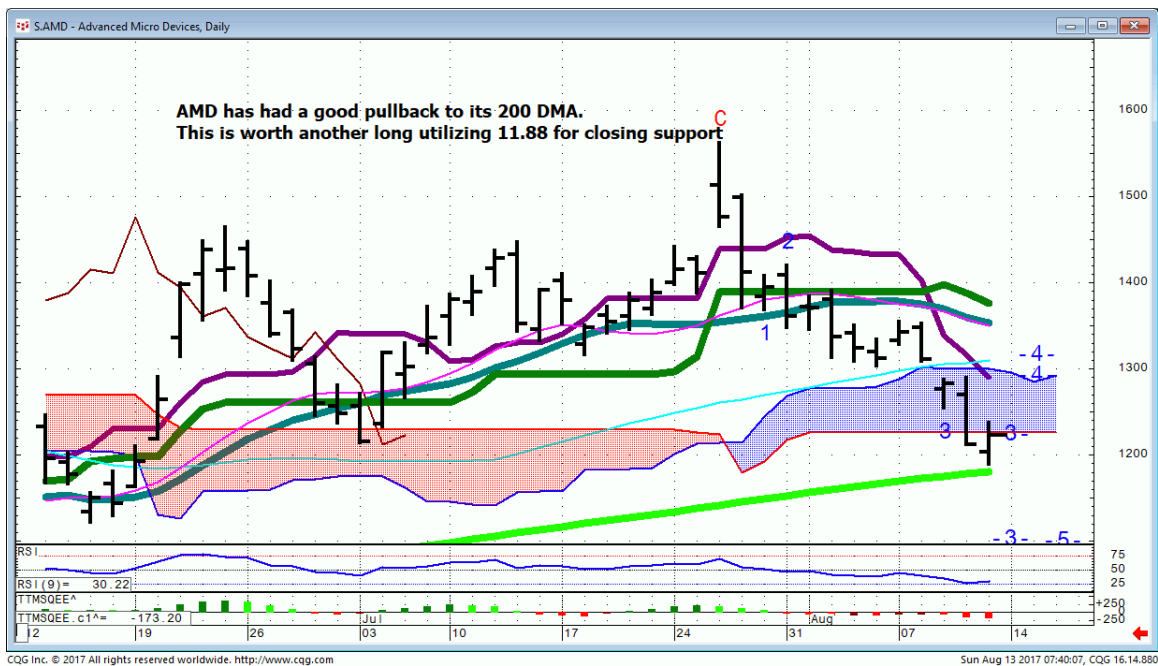
BUD...



R..Ryder Systems Put in an ORH day from cloud support



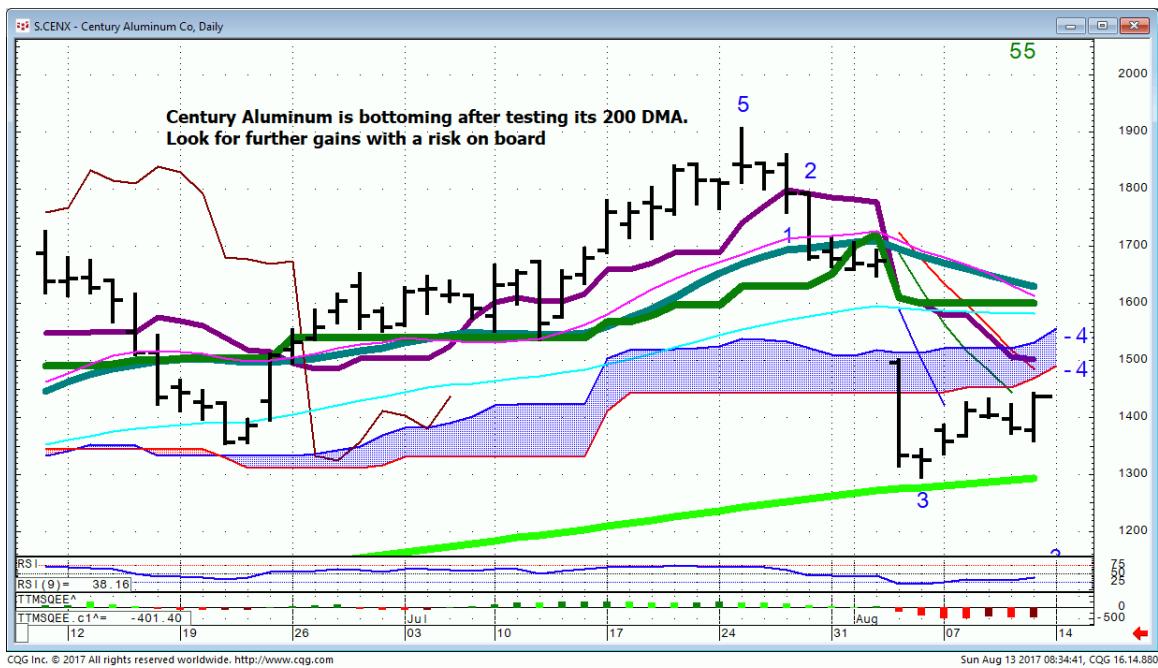
AMD...



NVDA...



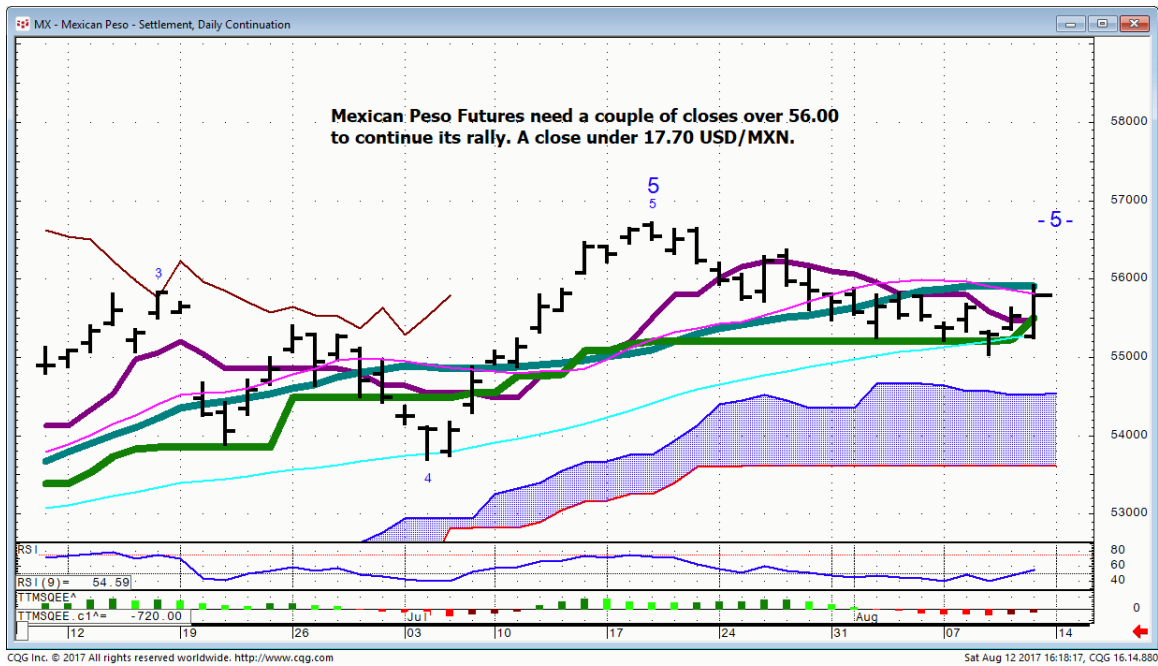
CENX...



Bonds

FX

MX...Mexican Peso Futures



Commodities

General Comments or Valuable Insight

8/3/17

The spreads have been weakening over the past few sessions.

Time to review your portfolios and adjust your risk accordingly. I'm looking for a name specific trade on light volume for the next couple of weeks

My game plan is to buy the Spu's and DJI when and if the Spu's print 2428.

This will also be the matching level to pick up any big cap tech you've an interest in.

We got the downside move to back and fill the Point & Figure charts although Spu's never printed 2428.

Now the question is whether or not the Thursday-Friday low was good for just a bounce or a bigger low.

Bunds and Bonds seem stretched on the upside. The Bunds are a low risk sale into 165.50.

30 yr. Bonds are a low risk sale @ 157.20.

We'd need more risk off to trade the above levels.

Going into this week I'd let the Asian session set up to determine direction.

The most telling action will be this weeks mid-week shuffle as we need to see confirmation of a potential price low.

Tech names with bullish indicators; QRVO, MSFT, ADI.

<http://www.whitewavetradingstrategies.com/glossary/>

WhiteWave Trading Strategies
Independent Research from the Pro's Pro

We Trade to Make Money

www.whitewavetradingstrategies.com

info@whitewavetradingstrategies.com